

# Bluetooth™ Connection Kit

*Featuring the Socket Bluetooth Card™ and Windows CE software for adding Bluetooth wireless connectivity to the following mobile computers:*

- *Pocket PCs*
- *Pocket PC 2002s*
- *Handheld PC 2000s*
- *Handheld PC Pros*

## User's Guide



**socket**™

## How this Manual is Organized

This manual is designed to help you install and use the Socket Bluetooth Connection Kit.

Chapter 1, **Introduction**, describes key features of the Bluetooth Connection Kit and identifies package contents.

Chapter 2, **Basic Setup**, explains the minimum steps you need to complete to install and use the Bluetooth Card.

Chapter 3, **Advanced Features**, shows additional steps you may choose to perform while installing and/or operating the Bluetooth Card.

These optional steps include: setting up your Bluetooth Card, viewing device properties, setting up your favorite device, using the Bluetooth Device Discovery Wizard, using the Bluetooth Device Bonding Wizard, changing views, and deleting an item from the Bluetooth Devices manager.

Chapter 4, **The Socket Dialer**, explains how to install the Socket Dialer, assign a dialing prefix, and use the program to dial a number directly from your Contacts folder.

Chapter 5, **Printing**, explains how to print using the PrintPocketCE program included on the *Bluetooth Connection Kit Installation CD*.

Appendix A, **Specifications**, provides technical specifications for the Bluetooth Card.

Appendix B, **Safety and Usage Tips**, lists guidelines you should follow to use the Bluetooth Card safely and efficiently, including information about product care, antenna care, use while driving or in an aircraft, and radio frequency exposure.

Appendix C, **Troubleshooting**, gives advice for fixing the most common problems you may encounter using the Bluetooth Card.

Appendix D, **Technical Support**, explains Socket's technical support policy for the Bluetooth Card.

# Table of Contents

<b>CHAPTER 1 INTRODUCTION</b>	<b>4</b>
Overview	4
Contents of the Connection Kit	5
Installation Steps Summary	6
<b>CHAPTER 2 BASIC SETUP</b>	<b>7</b>
STEP 1: Install the Software	7
STEP 2: Insert the Card	10
STEP 3: Get Connected!	11
STEP 4: Dial-up Networking	15
<b>CHAPTER 3 ADVANCED FEATURES</b>	<b>19</b>
Turn Radio Transmitter ON/OFF	20
Set up Your Bluetooth Card	21
View Device Properties	22
Set up Your Favorite Device	23
Discover Bluetooth Device(s)	24
Bond with Discovered Device(s)	25
<b>CHAPTER 4 THE SOCKET DIALER</b>	<b>29</b>
Assign a Dialing Prefix	29
Use the Socket Dialer	30
<b>CHAPTER 5 PRINTING</b>	<b>32</b>
<b>APPENDIX A SPECIFICATIONS</b>	<b>35</b>
<b>APPENDIX B SAFETY AND USAGE TIPS</b>	<b>36</b>
<b>APPENDIX C TROUBLESHOOTING</b>	<b>38</b>
<b>APPENDIX D TECHNICAL SUPPORT</b>	<b>40</b>
<b>LIMITED WARRANTY</b>	<b>41</b>
<b>LIMITED SOFTWARE WARRANTY</b>	<b>42</b>
<b>COPYRIGHT NOTICE</b>	<b>43</b>
<b>REGULATORY COMPLIANCE</b>	<b>44</b>

# Chapter 1 Introduction

## Overview

The Socket Bluetooth Connection Kit makes it easy to add Bluetooth wireless connectivity to a Windows Powered Pocket PC (including Pocket PC 2002s) or a Windows CE-based HPC 2000 or Handheld PC Pro. It's perfect for connecting any of these mobile computers wirelessly to your favorite Bluetooth phone or printer.



The Bluetooth Card is the only plug-in card to incorporate all Bluetooth components within the CompactFlash Type I form factor. With a CompactFlash-to-PC Card adapter, the Bluetooth Card also works in a PC Card (PCMCIA) slot. You can purchase adapters separately online at: [www.esend.com/socket/product.asp?sku=AC4000%2D978](http://www.esend.com/socket/product.asp?sku=AC4000%2D978)

The Bluetooth Connection Kit includes a Bluetooth Card and Bluetooth software, including drivers, the Get Connected! Wizard, the Bluetooth Devices manager, and the Socket Dialer.

For quickly connecting your mobile computer to a Bluetooth phone, use the Get Connected! Wizard. To connect to a non-phone device, use the advanced features found in the Bluetooth Devices manager. After connecting to a Bluetooth phone, you can use the Socket Dialer to directly dial a number from your Contacts list.

This *User's Guide* explains how to install and use the Bluetooth Card. This guide primarily shows Pocket PC screens. Except where otherwise noted, Pocket PC 2002s, HPC 2000s and Handheld PC Pros will have functionally equivalent screens.

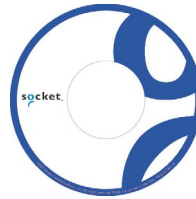
To register the Bluetooth Connection Kit, please visit: <http://www.socketcom.com/product/prodreg.htm>

For software updates, please check: [www.socketcom.com](http://www.socketcom.com)

## Contents of the Connection Kit

The Socket Bluetooth Connection Kit includes these items:

- A Socket Bluetooth Card (CompactFlash card Type I)
- The *Socket Bluetooth Connection Kit Installation CD*
- The *Quick Start Guide for Bluetooth Connection Kit*
- A registration card



To register the kit online, visit: [www.socketcom.com/product/prodreg.htm](http://www.socketcom.com/product/prodreg.htm)

## Installation Steps Summary

The most basic installation and operation of the Bluetooth Card can be completed in only four steps. There are also several advanced features you can choose to perform, as well as the Socket Dialer program you may want to install and use.

### BASIC SETUP AND USE

STEP 1: Install the software.

STEP 2: Insert the Bluetooth Card into your mobile computer.

STEP 3: Get Connected!

STEP 4: Set up dial-up networking.

### OPTIONAL: ADVANCED FEATURES

- Set up your Bluetooth Card.
- Use the Bluetooth Devices manager.
  - View device properties.
  - Set up your favorite device.
  - Discover other Bluetooth device(s).
  - Bond with another Bluetooth device.
  - Change views.
  - Delete a device from your folder.



### OPTIONAL: SOCKET DIALER

- Assign a dialing prefix.
- Dial a contact.

*Note: There are some important safety and usage guidelines you should read before operating the Bluetooth Card. Please refer to Appendix B, "Safety and Usage Tips."*

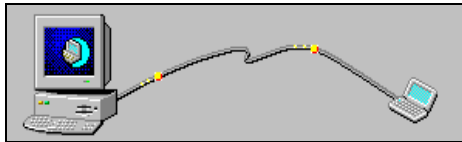
# Chapter 2 Basic Setup

This chapter covers the minimum steps you must complete to install and operate the Bluetooth Card. The four steps detailed in this chapter include installing software, inserting the card, getting connected, and setting up dial-up networking.

## STEP 1: Install the Software

Follow these steps BEFORE inserting the Bluetooth Card:

1. Make an active partnership between the mobile computer and a host PC.



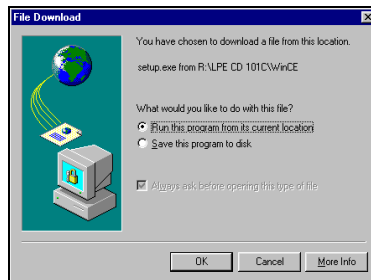
An active partnership exists if data can be moved between the mobile computer and the host PC via a serial/USB/Ethernet cable or cradle.

2. Insert the *Socket Bluetooth Card Installation CD* into the host PC.
3. Run the SETUP.HTM or SETUP.EXE file on the CD-ROM, depending on what web browser your host PC uses by default.



**IF YOUR DEFAULT WEB BROWSER IS INTERNET EXPLORER, run the SETUP.HTM file:**

- (a) Click **Start | Run** on the host PC. Type **X : \SETUP . HTM** (Replace X with your CD drive letter.)
- (b) In **File Download**, select the option that lets you run (or open) the file.  
**IMPORTANT! YOU MUST RUN THE FILE! DO NOT SAVE IT!**



*File Download screen from Internet Explorer 5.5*

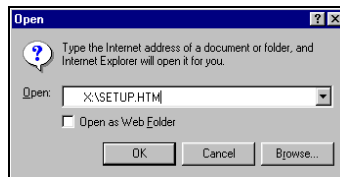
- (c) A **Security Warning** screen will appear. Click **Yes**.



**IF YOUR DEFAULT WEB BROWSER IS NETSCAPE, DO NOT run the SETUP.HTM file on Netscape. Instead, choose either of two options:**

**OPTION ONE:** Use Internet Explorer to run the SETUP.HTM file.

- (a) In the Internet Explorer screen, click **File | Open**.
- (b) In the **Open** screen, type **X : \SETUP . HTM**  
(Replace X with your CD drive letter.)



*Open screen from Internet Explorer 5.5*

- (c) Proceed with the instructions described on the previous page for Internet Explorer.

**OPTION TWO:** Run the SETUP.EXE file.

Click on **My Computer** or use Windows Explorer to manually browse the CD to the WinCE (or other appropriate directory) and manually launch the **SETUP . EXE** file found there.

***Important! Be sure to choose the SETUP.EXE file, NOT the SETUP.HTM file. The two file types have different icons:***

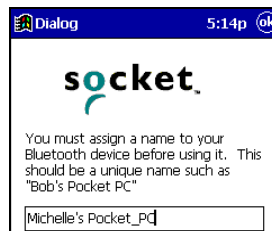


*EXE icon*



*HTM icon for Netscape*

- 4. Follow the instructions on the host PC screen until installation is done.
- 5. After completing setup, your host PC may display an **Application Downloading Complete**. Click **OK**.
- 6. In the **Dialog** screen, enter a name for the mobile computer. Tap **ok**.





7. If desired, install the Socket Dialer. This program lets you dial a number directly from your Contacts list.
8. Disconnect the mobile computer from the host computer. Soft reset the mobile computer. Push the reset button, often on the back of the device.

## STEP 2: Insert the Card

***Important!***

***Do NOT insert the card upside down or shove the card in too hard.  
Damage may occur!***

Insert the card into your mobile computer's slot. If using a PC Card slot, first insert the Bluetooth Card into a CompactFlash-to-PC Card adapter (available separately). Make sure the blue label is on top.

*Insert the card directly into a CompactFlash I/O slot...*




*...or plug the card into an adapter for use in a PC Card slot.*



When properly inserted, the card unit will be fully contained within the slot.


After the mobile computer recognizes the card, the following will occur:

- You will get a message warning against using Bluetooth on airplanes. Tap **OK**.
- The Bluetooth icon  will appear in the task tray (visible in the Today screen for Pocket PCs and Pocket PC 2002s).

### STEP 3: Get Connected!

The Get Connected! Wizard guides you through a one-time setup process that prepares the mobile computer and phone for Bluetooth connections. The wizard varies depending on what phone you want to connect to.

#### Ericsson, Nokia, Sony Phones

1. Tap on the Bluetooth task tray icon  (in the **Today** screen for Pocket PCs and Pocket PC 2002s). In the pop-up menu, tap **Get Connected!**
2. Follow the **Bluetooth "Get Connected!" Wizard**.

*Note: For HPCs, adjust the taskbar to reveal the entire wizard screen. Go to **Start | Settings | Taskbar**. Select **Auto hide**. Tap **OK**.*

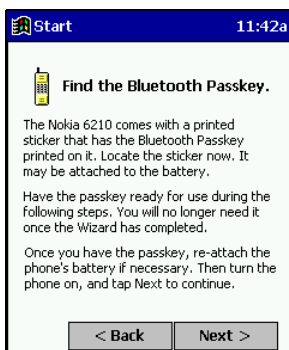
3. In the welcome screen, use the drop-down list to select the type of phone you are using. The wizard will provide tailored instructions based on your selection.

*Note: This example is for a Nokia phone. Your phone may differ.*

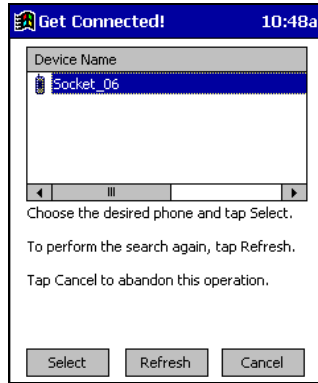


4. As prompted, find out what kind of passkey system your phone uses.

**Important!** *If your phone has a pre-assigned passkey, have it ready. (e.g., The passkey of a Nokia phone is on a label in the box and/or on the battery.)*



- When the search is complete, a list of the discovered Bluetooth phones will appear. Choose the phone you wish to connect to, and tap **Select**. A service discovery phase will begin, about 5-10 seconds.




- As prompted in the next screen, set your phone to “Bondable” or “Pairable” mode. For instructions, refer to your phone manual. Have your passkey ready, then tap **Next>**.
- In the next screen, enter the passkey. Tap **Reply**.



*Note: Exchanging passkeys allows the phone and mobile computer to set up an encrypted data link for secure communications.*

- Enter the same passkey into the mobile phone. The mobile phone may then either automatically accept the passkey or ask for you to enter one.
- Tap **Finish**. After successfully connecting, the phone will appear in the **Bluetooth Devices** folder. You will not need to run the Get Connected! Wizard again unless you plan to switch between different phones.

## **Motorola Timeport 270C**

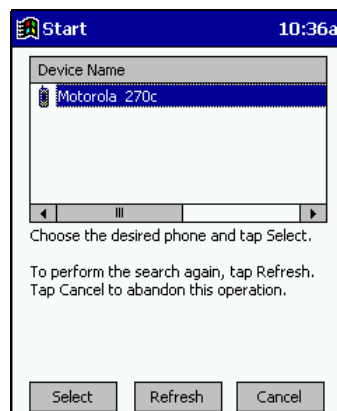
1. Tap on the Bluetooth task tray icon  (visible from the **Today** screen for Pocket PCs and Pocket PC 2002s). In the pop-up menu, select **Get Connected!**
2. Follow the Bluetooth “Get Connected!” Wizard.

*Note: For HPCs, adjust the taskbar to reveal the entire wizard screen. Go to **Start | Settings | Taskbar**. Select **Auto hide**. Tap **OK**.*

3. In the welcome screen, use the drop-down list to select the Motorola Timeport 270C. The wizard will provide tailored instructions for this phone.



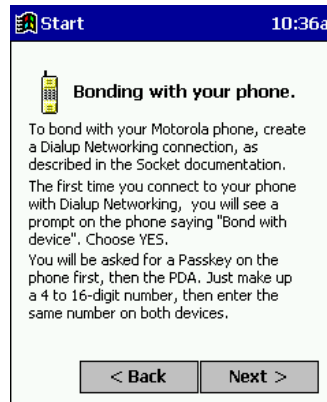
4. As directed in the next two screens, assign the phone a unique name and set the phone in Discoverable mode. Then tap **Next>**.
5. The mobile computer will begin to search for the phone. When the search is over, a list of the discovered Bluetooth phones will appear.



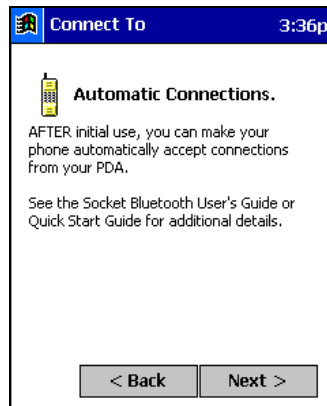
Choose the phone you wish to connect to, and tap **Select**. A service discovery phase will begin, about 5-10 seconds.

- The next two screens describe procedures you can only complete outside of the wizard. Read through each screen but do not complete the described procedures until you exit the wizard. Directions for these procedures are provided in *STEP 4: Dial-up Networking*, starting on the next page. The two procedures are:

**Bonding with your phone** — This must be completed in order to complete the Bluetooth connection and involves dial-up networking.



**Automatic Connections** — This procedure is optional but will make future Bluetooth connections more convenient.



- Continue to the last screen of the wizard and tap **Finish**. Now proceed to STEP 4 to complete the bonding process and, if desired, set up automatic connections.

## STEP 4: Dial-up Networking

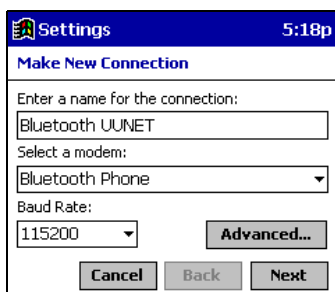
Before setting up dial-up networking, prepare yourself with dial-up information and other necessary settings for your office network or ISP.

### Pocket PCs and Pocket PC 2002s

1. Pocket PC — Go to **Start | Settings | Connections | Modems**. In the next screen, tap **New Connection...**

Pocket PC 2002 — Go to **Start | Settings | Connections**. Tap on the **Connections** icon. In the top field, select **Internet Settings**. Tap **Modify...** In the next screen, tap **New...**

2. In the next screen(s), enter a name for the dial-up connection and select **Bluetooth Phone** for the modem. Tap **Advanced...**



Settings 5:18p

Make New Connection

Enter a name for the connection:  
Bluetooth UUNET

Select a modem:  
Bluetooth Phone

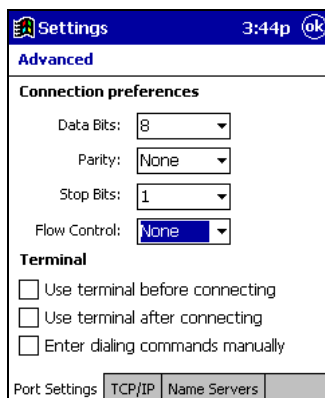
Baud Rate:  
115200

Advanced...

Cancel Back Next

*Note: Remember what you name the connection. You will need it when you start the connection.*

3. The **Port Settings** screen will appear. For **Flow Control**, select **None**. If needed, tap on the **TCP/IP** and/or **Name Servers** screens to enter any necessary settings for your office network or ISP. Tap **OK**.



Settings 3:44p OK

Advanced

Connection preferences

Data Bits: 8

Parity: None

Stop Bits: 1

Flow Control: None

Terminal

Use terminal before connecting

Use terminal after connecting

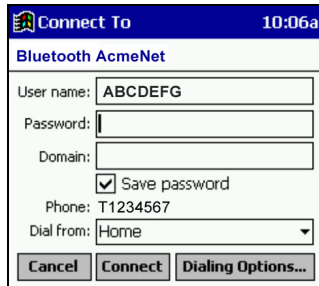
Enter dialing commands manually

Port Settings TCP/IP Name Servers OK

4. Tap **Next**.
5. In the **Phone number** field, enter the dial-up number. Tap **Next**.
6. Uncheck **Wait for dial tone before dialing**. Tap **Finish**.

7. Now you are ready to start the connection.

**Pocket PC** — Go to **Start | Programs | Connections**. Tap on the Bluetooth connection you just set up. Make sure the correct dialing information is entered, then tap **Connect**.



**Pocket PC 2002** — When you return to the **Connections** screen, under **Internet Settings**, tap **Connect**. In the next screen, make sure the correct dialing information is entered. Tap **OK**.

8. **FOR MOTOROLA TIMEPORT 270C ONLY:**

After you tap **Connect** for the first time, the phone will display a message asking if you want to bond. Enter **YES**. Make up a 4-8 digit passkey, enter it on the phone, then enter it on the mobile computer.

After successfully bonding, you can set up the phone for automatic connections.

#### **Automatic Connections for Motorola:**

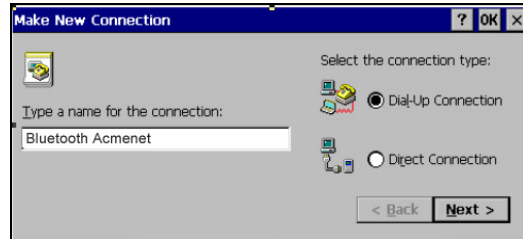
- On the phone, press **MENU**.
- Scroll to **Settings**, then press **SELECT**.
- Scroll to **Connection**, then press **ON**.
- On **Bluetooth Link**, press **SELECT**.
- Scroll to **Devices**, then press **SELECT**.
- Choose your mobile computer, then press **EDIT**.
- Scroll to **Access:Ask**, then press **CHANGE**.
- Scroll to **Automatic**, then press **SELECT**. Press **DONE**.

9. To use a different Bluetooth phone for dial-up networking, you can use the same connection setup, but you must make the new phone your favorite. Just run the **Get Connected! Wizard** again, select the new phone, and make it your new **Favorite** when prompted. Or you can use the Bluetooth Devices folder to change your favorite phone (see page 23).

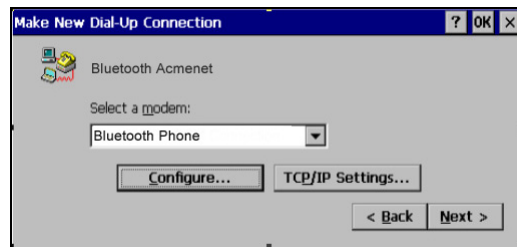


## Handheld PCs

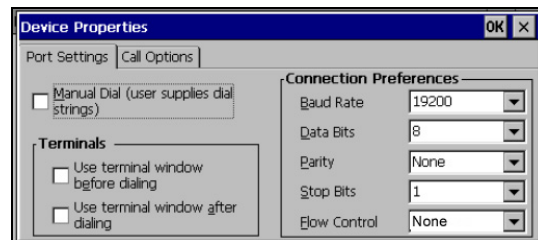
1. Go to **Start | Programs | Communication | Remote Networking | Make New Connection**.
2. In the next screen, enter a name for the Bluetooth connection. Select **Dial-Up Connection**. Tap **Next>**.



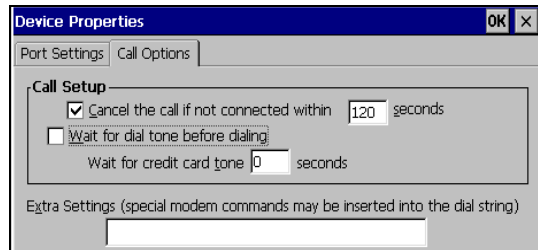
2. Select **Bluetooth Phone** for the modem. Tap **Configure...**



3. The **Port Settings** screen will appear. For **Flow Control**, select **None**. Enter any necessary settings for your office network or ISP.



5. Tap on the **Call Options** tab. Uncheck **Wait for dial tone before dialing**. Tap **OK**.



6. If needed, tap on **TCP/IP** to enter any special network settings for your office network or ISP. Tap **OK**.
7. Tap **Next>**.
8. Enter the dial-up number for your office network or ISP. Tap **Finish**.
9. Now you are ready to start the connection.

Go to **Start | Control Panel | Remote Networking**. Tap on the Bluetooth connection you just set up. Make sure the correct dialing information is entered, then tap **Connect**.

#### 8. **FOR MOTOROLA TIMEPORT 270C ONLY:**

After you tap **Connect** for the first time, the phone will display a message asking if you want to bond. Enter **YES**. Make up a 4-8 digit passkey, enter it on the phone, then enter it on the mobile computer.

After successfully bonding, you can set up the phone for automatic connections.

#### **Automatic Connections for Motorola:**

- On the phone, press **MENU**.
  - Scroll to **Settings**, then press **SELECT**.
  - Scroll to **Connection**, then press **ON**.
  - On **Bluetooth Link**, press **SELECT**.
  - Scroll to **Devices**, then press **SELECT**.
  - Choose your mobile computer, then press **EDIT**.
  - Scroll to **Access:Ask**, then press **CHANGE**.
  - Scroll to **Automatic**, then press **SELECT**. Press **DONE**.
9. To use a different Bluetooth phone for dial-up networking, you can use the same connection setup, but you must make the new phone your favorite. Just run the **Get Connected! Wizard** again, select the new phone, and make it your new **Favorite** when prompted. Or you can use the Bluetooth Devices folder to change your favorite phone (see page 23).

## Chapter 3 **Advanced Features**


This chapter explains optional steps you may choose to perform while installing and/or using the Bluetooth Card.

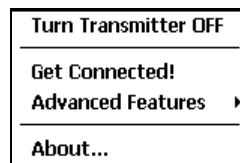
The steps covered in this chapter include:

- Turning the radio transmitter on/off
- Setting up your Bluetooth Card
- Viewing device properties
- Setting up a Favorite Device
- Using the Bluetooth Device Discovery Wizard
- Using the Bluetooth Device Bonding Wizard
- Changing views
- Deleting an item from the Bluetooth Devices folder

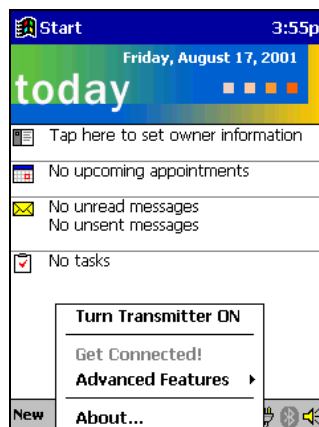
## Turn Radio Transmitter ON/OFF

You may want to turn off the radio transmitter to save power or if you are entering an area with radio restrictions.

1. After you insert the Bluetooth Card, the Bluetooth icon  should appear in the task tray (visible from the **Today** screen for Pocket PCs and Pocket PC 2002s). Tap on the icon.
2. In the pop-up menu, select **Turn Transmitter OFF**.




3. The Bluetooth Card radio transmitter will shut off. The Bluetooth icon in the task tray will become gray, as will relevant menu options (e.g., **Get Connected!**).

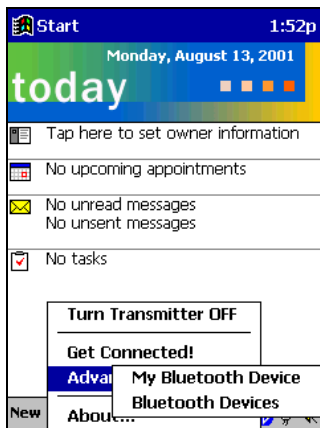


4. To turn the radio transmitter back on, in the pop-up-menu, select **Turn Transmitter ON**.

## Set up Your Bluetooth Card

*Note: If you use the Get Connected! Wizard, which is recommended for normal usage, then this step is not necessary. This step would be used to change the friendly name of your mobile computer.*

1. After you insert the Bluetooth Card, the Bluetooth icon  should appear in the task tray (visible from the **Today** screen for Pocket PCs and Pocket PC 2002s). Tap on the icon.
2. In the pop-up menu, select **Advanced Features**, then **My Bluetooth Device**.



3. In the **My Bluetooth Device** screen, enter a **Friendly Name** and make any desired configuration changes. When done, tap **OK**.



*Note:*

- *In normal phone connect operation, **Discoverable** mode is not needed and should be disabled.*
- *If you do enable **Discoverable** mode, note that it does not shut off by itself. To save power, remember to disable it when not needed.*
- **Connectable, Bondable, Use Authentication, and Use Encryption** are also not required for printing or dial-up networking applications.

## View Device Properties

Follow these steps to view the properties of an already discovered device.

1. If not open, launch the **Bluetooth Devices** folder.

Tap on the Bluetooth icon (in the **Today** screen for Pocket PCs and Pocket PC 2002s). Select **Advanced Features** then **Bluetooth Devices**.

For HPCs, you can also tap on the **Bluetooth Devices** folder directly on the desktop.

2. Select a device. Tap on the **Properties** icon , or tap on **Device** then select **Properties**.

Pocket PCs and Pocket PC 2002s — Alternatively, you can tap and hold your stylus on the Bluetooth device you want to view information about. In the pop-up menu, select **Properties**.



3. Use the **General** and **Services** screens to configure and/or research device properties.

If needed, assign a new device type icon by tapping on the arrow buttons in the **General** screen. You can also use the **Device name** field to rename the device. When done, tap **ok**.



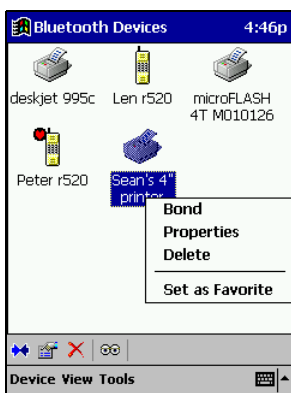
## Set up Your Favorite Device

Follow these steps to set up a default device in the **Bluetooth Devices** folder. This is needed only if you want to set up a non-phone device as a favorite.

*Note: If the folder has only one device, it will automatically be the favorite.*

1. Tap on **Tools** and select **My Favorites**. In the **My Favorite** screen, use the drop-down menu to select a default device.

Pocket PCs and Pocket PC 2002s — Alternatively, in the **Bluetooth Devices** folder, you can tap and hold your stylus on the device you wish to set as your favorite. In the pop-up menu, select **Set as Favorite**.




2. After setting a device as your favorite, its icon will appear in the Bluetooth Devices folder with a heart next to it.



*Note: The “favorite” device will be associated with the Bluetooth virtual COM port with the friendly name “Bluetooth Phone.” This would be used in the “Dial-up Networking” setup selection.*

### **What if I can't connect to a device in the Bluetooth Devices folder, or I can't select it as my favorite?**

You can connect to a device only if its services have been successfully discovered. Follow these steps to perform a service discovery:

With the device selected in the folder, tap on **Properties** , then select the **Services** tab. Tap the **Update** button.


Please report any devices that you have problems discovering services for. Email [askbluetooth@socketcom.com](mailto:askbluetooth@socketcom.com)

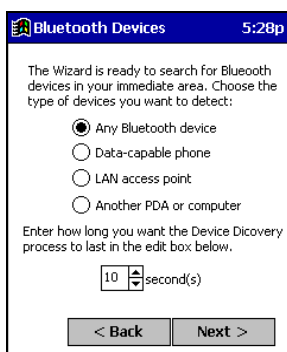
## Discover Bluetooth Device(s)

Follow these steps to discover other Bluetooth devices nearby, including non-phone devices. This is a more detailed alternative to using the Bluetooth “Get Connected!” Wizard, and it will allow you to discover both phone and non-phone devices.

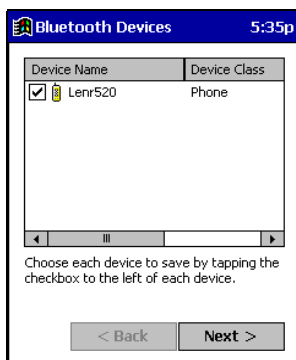
1. If not open, launch the **Bluetooth Devices** folder:  
Tap on the Bluetooth icon (in the **Today** screen for Pocket PCs and Pocket PC 2002s). Select **Advanced Features** then **Bluetooth Devices**.

HPCs — You can also tap on **Bluetooth Devices** on the desktop.

2. In the **Bluetooth Devices Folder**, tap on the **Device Discovery** icon . Or you can tap on **Tools**. In the pop-up menu, select **Device Discovery**.
3. Follow the **Bluetooth Device Discovery Wizard** to search for Bluetooth devices nearby. When prompted, select the device type you seek.



4. When the search is complete, a screen will report the discovered Bluetooth devices. Check the box next to any device you wish to save information about, (i.e., any devices you wish to connect to). Tap **Next>**.



5. A service discovery phase will begin, 5-10 seconds per chosen device.
6. In the next screen, tap **Finish**.



## Bond with Discovered Device(s)

Follow these steps to bond with an already discovered Bluetooth device. In most cases, bonding is for establishing secure communications with a Bluetooth-enabled phone. This is a more detailed alternative to using the Bluetooth “Get Connected! Wizard.”

*Important!*

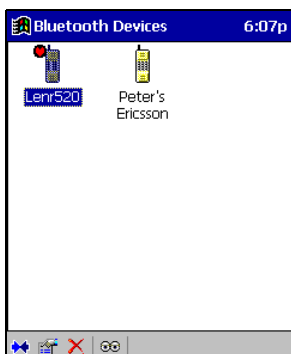
- *Do not attempt bonding with a Motorola Timeport 270C phone!*
- *Do not use this method to bond with a printer! The third-party printing software included on the installation CD also handles bonding.*


1. If not open, launch the **Bluetooth Devices** folder:

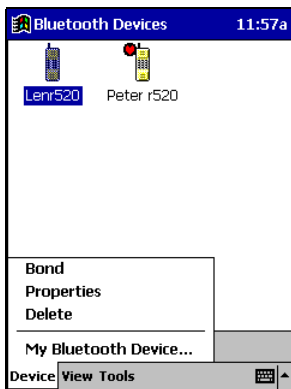
Tap on the Bluetooth icon (in the **Today** screen for Pocket PCs and Pocket PC 2002s). Select **Advanced Features** then **Bluetooth Devices**.

HPCs — You can also tap on **Bluetooth Devices** on the desktop.

2. Tap and hold your stylus on the Bluetooth device you want to bond with. In the pop-up menu, select **Bond**.



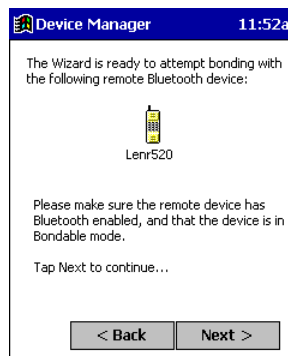
3. Alternatively, after selecting a device, tap on the **Bond** icon . Or tap on **Device**, then select **Bond**.



- The **Bluetooth Device Bonding Wizard** will launch. Follow the wizard to bond with your selected device.



- As prompted, make sure the Bluetooth device that you want to bond with is in Bondable mode.



- If the remote device is set up to accept bonding, a **Bluetooth Passkey** screen will appear. To continue bonding, enter the correct passkey and tap **Reply**.

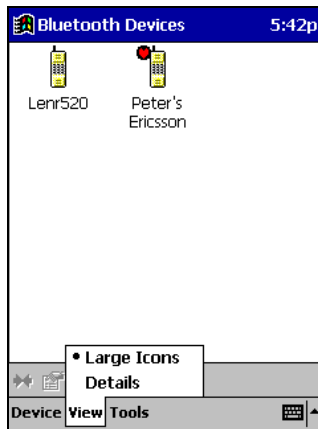


- When you have successfully bonded with the other device, tap **Finish**.

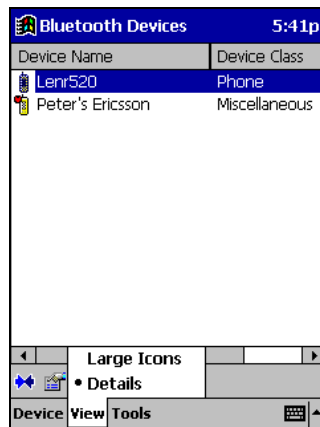
## Change Views

You can switch between the **Large Icons** or **Details** views for the **Bluetooth Devices** folder.

1. In **Bluetooth Devices**, tap on **View**.
2. In the pop-up menu, choose between **Large Icons** or **Details**.




*Large Icons view*

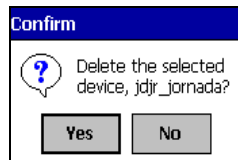


*Details view*

## Delete a Device from the Folder

If you no longer plan to connect with it, you can delete a device from the **Bluetooth Devices** folder.

1. If not open, launch the **Bluetooth Devices** folder.
2. Tap and hold your stylus on the device you wish to delete. In the pop-up menu, select **Delete**.
3. Alternatively, after selecting a device, tap on the **Delete** icon . Or tap on **Device** then select **Delete**.
4. A **Confirm** screen will appear. Tap **Yes**.



# Chapter 4 The Socket Dialer

This chapter explains how to assign a dialing prefix and use the Bluetooth Installer to dial a number directly from your Contacts list.

If you have not done so already, be sure to run the Dialer Installer from the *Socket Bluetooth Card Installation CD*. While installing the program, you can also assign the dialing prefix.

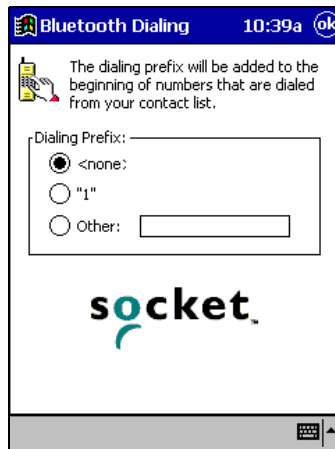
## Assign a Dialing Prefix

If you have not already assigned a dialing prefix during the install process, you can do so by following these steps:

1. Pocket PC or Pocket PC 2002 — Go to **Start | Settings | System**. Tap on **Socket Dialer**.  
HPC — Go to **Start | Settings | Control Panel**. Tap on **Socket Dialer**.

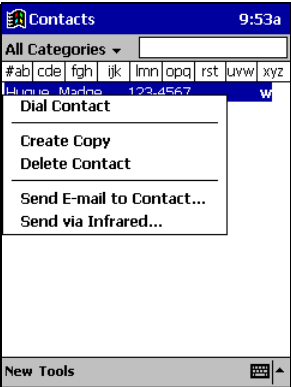


2. Select the appropriate **Dialing Prefix**, then tap **ok**.



# Use the Socket Dialer

1. To use the dialer, the mobile computer must already be connected to the Bluetooth phone. You can use the Get Connected! Wizard to do this.
2. Pocket PC or Pocket PC 2002 — Go to **Start | Contacts**.  
HPC — Click on the **Contacts** icon from the desktop.
3. Tap and hold your stylus on the contact you wish to dial to. In the pop-up menu, select **Dial Contact**. Alternatively, you can tap on **Tools** and select **Dial Contact**.



4. If you have multiple phone numbers for a contact, a screen will appear listing them, including any dialing prefix you may have assigned. Select the phone number you wish to dial.



5. Your mobile computer will connect to your phone and begin dialing.



Note: The Socket Dialer can dial a phone number containing any of the 17 following non-numeric characters:

\* # + . / ! @ - \ space A B C D T P W

Additionally, the following string can be included in a phone number:

(,')

The Socket Dialer can not dial a phone number containing non-numeric characters other than those listed above.

Socket recommends that you follow the standard Microsoft Outlook format for phone numbers.

# Chapter 5 Printing

This chapter explains how to print from a Bluetooth-enabled printer using the PrintPocketCE program included in on the *Socket Bluetooth Card Installation CD*. This program only works with Pocket PCs and Pocket PC 2002s. The Socket Bluetooth Connection Kit includes a 30-day trial version of PrintPocketCE. For a full version, please visit: [www.fieldsoftware.com](http://www.fieldsoftware.com)

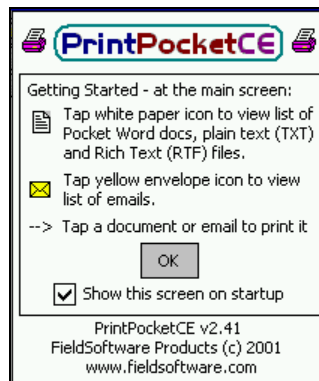
If you have not done so already, be sure to install the PrintPocketCE program. To find the install for this program on the installation CD, go to the Third Party folder, then the Field Software folder.

1. To print a file to a Bluetooth-enabled printer, you must first be connected to that printer. You can use the Get Connected! Wizard to do this.
2. Go to **Start | Programs | PrintPocketCE**.



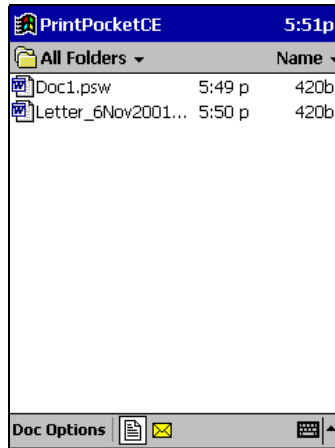
PrintPocke...

3. In the welcome screen, tap **OK**.



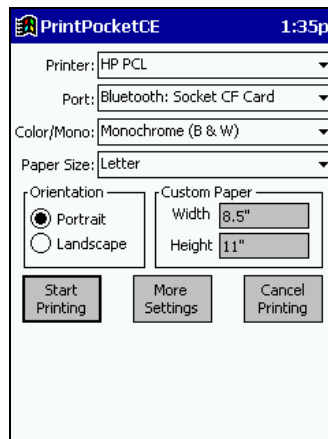


4. In the main screen, tap on the file you wish to print.

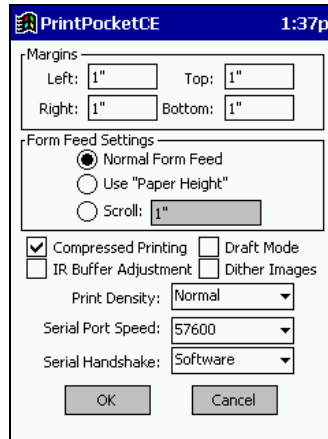


To locate your file, you can tap on the white paper icon at the bottom of the screen to view a list of Pocket Word docs, TXT, or RTF files. Tap on the yellow envelope icon to view email messages. Use the folders drop-down menu to switch between folders.

5. In the next screen, make sure the correct printer is chosen. For **Port**, choose **Bluetooth: Socket CF Card**. Make any other necessary printer settings.



If needed, tap on **More Settings** to adjust margins, form feed, and other settings. Tap **OK** to return to the main printing screen.



When done adjusting the settings, tap **Start Printing**.

6. The mobile computer will search for a Bluetooth printer. After the search, the Bluetooth Devices folder will appear. Select the Bluetooth printer, then tap **Select**.



If the mobile computer fails to detect the Bluetooth printer, make sure the printer is on, discoverable, and in range. Tap **Find** to repeat the search.

7. The document will begin printing.
8. To exit the program, tap **Doc Options**. In the pop-up menu, tap **Exit**.

# Appendix A Specifications

***Physical Characteristics:***

**CF I/O Card Size:** 1.43 x 1.69 x 0.13 in (36.4 x 42.8 x 3.3 mm)

***Power Consumption (3.3 V Supply):***

**Idle:** 16 mA

**Typical:** 40 mA

**Maximum:** 90 mA

***Interface Standards:***

**CompactFlash Interface:** CompactFlash I/O, Type I

**With CompactFlash-to-PC Card Adapter:** PCMCIA, Type II

**Serial Communications:** TTL

***Operating System Support:***

Windows CE v3.0 and v2.11

***Software Compatibility:***

Windows COM port

***Hardware Compatibility:***

***Standard Card (without PC Card adapter):***

Handheld PC Pro with Windows CE (v2.11 or greater)

Pocket PC, Pocket PC 2002 or HPC 2000 with Windows CE  
(v3.0 or greater)

***With CompactFlash-to-PC Card adapter:***

Handheld PC Pro or HPC 2000 with Windows CE (v2.11 or greater).

***Software Included:***

*Socket Bluetooth Connection Kit Installation CD*

***Compatible Applications:***

*PrintPocketCE*

***Warranty:***

**CompactFlash Card:** Three years

***Certification:***

FCC: Part 15, Class B

C-TICK s.182

Bluetooth 1.0b with critical errata

ETS 300 328      ETS 300 826

# Appendix B Safety and Usage Tips

## Product Care

- Do not expose your product to liquid, moisture or extreme humidity.
- Do not expose your product to extreme high or low temperatures.
- Do not expose your product to lit candles, cigarettes, or cigars, or to open flames, etc.
- Do not drop, throw or try to bend the product, as rough treatment could damage it.
- Do not paint your product, as the paint could obstruct parts and prevent normal use.
- Do not attempt to disassemble your product: a broken warranty seal will void the warranty. The product does not contain consumer serviceable components. Should your Bluetooth Card need service, please contact Socket technical support at: [techsupport@socketcom.com](mailto:techsupport@socketcom.com).
- Treat your product with care. Keep in a clean and dust-free place.
- Changes or modifications of this product, not expressly approved by Socket, may void the user's authority to operate the equipment.

## Antenna Care

Do not place a metallic shield around your Bluetooth Card since it will reduce the radio transmission efficiency.

## Efficient Use

For optimum performance, please make sure that there is no metallic surrounding your Bluetooth Card.

## Driving

RF energy may affect some electronic systems in motor vehicles, such as car stereo, safety equipment, etc. Check with your vehicle manufacturer's representative to be sure that your Bluetooth Card will not affect the electronic system in your vehicle.

## Aircraft

- Turn off your Bluetooth Card antenna before boarding any aircraft.
- To prevent interference with communications systems, you must not use your Bluetooth Card while the plane is in the air.
- Do not use it on the ground without permission from the crew.

## Radio Frequency Exposure

Your Bluetooth Card is a radio transmitter and receiver. When in operation, it communicates with a Bluetooth-equipped mobile phone or mobile computer by receiving and transmitting radio frequency (RF) magnetic fields in the frequency range 2400 to 2500 MHz. The output power of the radio transmitter is 0.001 Watt.

The Bluetooth Card unit is designed to be in compliance with the RF exposure limits set by national authorities and international health agencies<sup>1</sup> when installed or used separately from other antennas or radio transmitters.

---

<sup>1</sup> Examples of RF exposure standards and guidelines:

ICNIRP, “Guidelines for limiting exposure to time-varying electric, magnetic, and electromagnetic fields (up to 300 GHz)”, International Commission on Non-Ionizing Radiation Protection (ICNIRP), Health Physics, vol. 74, pp 494-533, April 1998.

99/519/EC, EU Council Recommendation on the limitation of exposure to the general public to electromagnetic fields 0 Hz – 300 GHz, Official Journal of the European Communities, July 12, 1999.

ANSI/IEEE C95.1-1992, “Safety levels with respect to human exposure to radio frequency electromagnetic fields, 3 kHz to 300 GHz”, The Institute of Electrical and Electronics Engineers, Inc., New York, 1991.

FCC Report and Order, ET Docket 93-62, FCC 96-326, Federal Communications Commission (FCC), August 1996.

Radiocommunications (Electromagnetic Radiation Human Exposure) Standard 1999, Australian Communications Authority (ACA), May 1999.

## Appendix C Troubleshooting

### SYMPTOM:

- I cannot connect to a device in my folder.

POSSIBLE REASONS	SOLUTION
The services for the devices have not been discovered.	In the <b>BT Devices</b> folder, tap on the <b>Properties</b> icon. Tap on the <b>Services</b> tab. In the <b>Services</b> screen, tap on the <b>Update</b> button.

### SYMPTOM:

- When I try to connect to my phone, I get a screen that says *Partial Success*.

POSSIBLE REASONS	SOLUTION
The phone is not in Bondable mode.	Set your phone to Bondable mode. If needed, consult your phone's documentation for help.
The passkey is incorrect.	Make sure the same passkey is entered on the phone and your mobile computer. If using a pre-assigned passkey for the phone, verify that your passkey is accurate.

### SYMPTOM:

- When I insert the Bluetooth Card, I get a message that says *Unrecognized Card*.

POSSIBLE REASONS	SOLUTION
You did not install the software for the Bluetooth Card yet.	Remove the card and install the software.

### SYMPTOM:

- My mobile computer cannot find any Bluetooth devices nearby.

POSSIBLE REASONS	SOLUTION
You are too far from other Bluetooth devices.	Move closer to the other Bluetooth device(s), within a range of 10 meters.
The Bluetooth device(s) nearby are not turned on.	Turn on the Bluetooth device(s) you wish to find.
The Bluetooth device(s) are not in discoverable mode.	Set the Bluetooth device(s) to discoverable mode. If needed, consult the device's documentation for help.

### SYMPTOM:

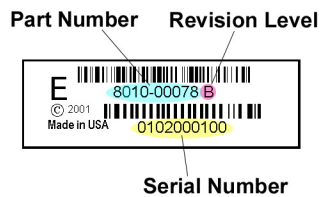
- My mobile computer keeps powering down to protect memory contents.

POSSIBLE REASONS	SOLUTION
Your mobile computer's battery is low.	Recharge the battery.
The Bluetooth Card has been in Discoverable mode for a long time. This mode requires a lot of battery power and should be turned off whenever not needed.	Tap on the Bluetooth icon, then select <b>My Bluetooth Device</b> . Uncheck <b>Discoverable</b> .

## Appendix D Technical Support

If you have trouble installing or using the Bluetooth Card, please refer to the “Troubleshooting” section. If problems persist, contact Socket’s technical support department prepared with the following information:

- The part number (including revision level) and serial number of your Bluetooth Card. See the diagram below.
- The manufacturer, model number, and Windows CE version of your mobile computer
- What you did to try to correct the problem



To reach Socket’s technical support department:

- Visit [www.socketcom.com/support/support\\_mail.htm](http://www.socketcom.com/support/support_mail.htm)
- Email [techsupport@socketcom.com](mailto:techsupport@socketcom.com)
- Phone 510-744-2720
- Fax 510-744-2727

Please refrain from disassembling the CompactFlash card. Disassembly of this device will void the product warranty.



## Limited Warranty

Socket Communications Incorporated (Socket) warrants this product against defects in material and workmanship, under normal use and service, for the following period from the date of purchase:

Plug-in card: Three years

Incompatibility is not a defect covered by Socket's warranty. During the warranty period, Socket will, at its option, repair or replace the defective product at no charge when furnished with proof of retail purchase, provided that you deliver the product to Socket or to an authorized Socket Service Center.

The returned product must be accompanied by a return material authorization (RMA) number issued by Socket or by Socket's Authorized Service Center. If you ship the product, you must use the original container or equivalent and you must pay the shipping charges to Socket. Socket will pay shipping charges back to any location in the contiguous United States. This warranty applies only to the original retail purchaser and is not transferable.

Socket may, at its option, replace or repair the product with new or reconditioned parts and the returned product becomes Socket's property. Socket warrants the repaired or replaced products to be free from defects in material or workmanship for ninety (90) days after the return shipping date, or for the duration of the original warranty period, whichever is greater.

This warranty does not cover the replacement of products damaged by abuse, accident, misuse or misapplication, nor as a result of service or modification other than by Socket.

SOCKET IS NOT RESPONSIBLE FOR INCIDENTAL OR CONSEQUENTIAL DAMAGES RESULTING FROM BREACH OF ANY EXPRESS OR IMPLIED WARRANTY, INCLUDING DAMAGE TO PROPERTY AND, TO THE EXTENT PERMITTED BY LAW, DAMAGES FOR PERSONAL INJURY. THIS WARRANTY IS IN LIEU OF ALL OTHER WARRANTIES INCLUDING IMPLIED WARRANTIES OF MERCHANTABILITY AND FITNESS FOR A PARTICULAR PURPOSE.

Some states do not allow limitation of implied warranties, or the exclusion or limitation of incidental or consequential damages, so that the above limitations or exclusions may not apply to you. This warranty gives you specific legal rights and you may also have other rights which vary from state to state.

This product may contain fully tested, recycled parts, warranted as if new.

For warranty information, phone (510) 744-2700.

## Limited Software Warranty

**LIMITED WARRANTY.** SOCKET warrants that the original disk or CD ROM is free from defects for 90 days from the date of delivery of the SOFTWARE.

**CUSTOMER REMEDIES.** SOCKET'S entire liability and your exclusive remedy shall be, at SOCKET'S option, either (a) return of the price paid or (b) replacement of the SOFTWARE which does not meet SOCKET'S Limited Warranty and which is returned to SOCKET with a copy of your receipt. Any replacement SOFTWARE will be warranted for the remainder of the original warranty period or 30 days, whichever is longer. THESE REMEDIES ARE NOT AVAILABLE OUTSIDE OF THE UNITED STATES OF AMERICA.

**NO OTHER WARRANTIES.** SOCKET disclaims all other warranties, either express or implied, including but not limited to implied warranties of merchantability and fitness for a particular purpose, with respect to the SOFTWARE and the accompanying written materials. This limited warranty gives you specific legal rights. You may have others which vary from state to state.

**NO LIABILITY FOR CONSEQUENTIAL DAMAGES.** In no event shall SOCKET or its suppliers be liable for any damages whatsoever (including, without limitation, damages for loss of business profits, business interruption, loss of business information, or other pecuniary loss) arising out of the use of or inability to use the SOFTWARE, even if SOCKET has been advised of the possibility of such damages. Because some states do not allow the exclusion or limitation of liability for consequential or incidental damages, the above limitation may not apply to you.

**EXPORT LAW ASSURANCES.** You may not use or otherwise export or reexport the SOFTWARE except as authorized by United States law and laws of the jurisdiction in which the SOFTWARE was obtained. In particular, but without limitation, none of the SOFTWARE may be used or otherwise exported or reexported (a) into (or to a national or resident of) a United States embargoed country or (b) to anyone on the U.S. Treasury Department's list of Specially Designated Nationals or the U.S. Department of Commerce's Table of Denial Orders. By using the SOFTWARE, you represent and warrant that you are not located in, under control of, or a national or resident of any such country or on any such list.

**GOVERNMENT END USERS.** If the SOFTWARE is supplied to the U. S. Government, the SOFTWARE is classified as "restricted computer software" as defined in clause 52.227-19 of the FAR. The U. S. Government's rights to the SOFTWARE are as provided in clause 52.227-19 of the FAR.

**CONTROLLING LAW AND SEVERABILITY.** This License shall be governed by the laws of the United States and the State of California. If for any reason a court of competent jurisdiction finds any provision, or portion thereof, to be unenforceable, the remainder of this License shall continue in full force and effect.

## Copyright Notice

Copyright © 2002 Socket Communications, Inc. All rights reserved.

Socket, the Socket logo and Battery Friendly are registered trademarks of Socket Communications, Inc. Bluetooth Card is a trademark of Socket Communications, Inc. Bluetooth and the Bluetooth logos are trademarks owned by Bluetooth SIG, Inc., U.S.A. and licensed to Socket Communications, Inc. All other brand and product names are trademarks of their respective holders.

The Bluetooth Card includes technology licensed under United States Patent Nos. 4,543,450, 4,603,320, 4,686,506, and 4,972,470.

Reproduction of the contents of this manual without the permission of Socket Communications is expressly prohibited. Please be aware that the products described in this manual may change without notice.

This manual has been prepared with the greatest care regarding its contents. However, in the event that it contains omissions, errors or any other misinformation, please contact SOCKET COMMUNICATIONS at:

**Socket Communications, Inc.**  
37400 Central Court  
Newark, CA 94560

Phone: (510) 744-2700  
Fax: (510) 744-2727

Other than the above, Socket Communications can assume no responsibility for anything resulting from the application of information contained in this manual.

Socket Communications requests that you refrain from any applications of the Socket Bluetooth Card that are not described in this manual. Socket Communications also requests that you refrain from disassembling the Bluetooth Card. Disassembly of this device will void the product warranty.

You can track new product releases, software updates and technical bulletins by visiting Socket's web page at: [www.socketcom.com](http://www.socketcom.com).

## Regulatory Compliance

The Socket Bluetooth Card is designed to be compliant with the rules and regulations in locations where they are sold and will be labeled as required. This product is type approved — users are not required to obtain license or authorization before using.

### Radio Frequency Interference Requirements

This device complies with part 15 of the FCC rules. Operation is subject to the following conditions: (1) This device may not cause harmful interference, and (2) this device must accept any interference received, including interference that may cause undesired operation.

This equipment is also ETS 300 328, ETS 300 826 and C-TICK compliant. These limits are designed to provide reasonable protection against harmful interference when the equipment is operated in a commercial environment.

This equipment generates, uses, and can radiate radio frequency energy and, if not installed and used in accordance with the instruction manual, may cause harmful interference to radio communications. Operation of this equipment in a residential area is likely to cause harmful interference, in which case the user will be required to correct the interference at his or her own expense.

This equipment generates and radiates radio-frequency energy. To comply with FCC RF exposure compliance requirements, the following antenna installation and device operating configurations must be satisfied: (1) Users are not permitted to make changes or modify the system in any way, and (2) connecting external antennas to the card is prohibited. This device and its antenna must not be co-located or operated with any other antenna or transmitter.

If this equipment does cause harmful interference to radio or television reception, which can be determined by turning the equipment off and on, the user may try to correct the interference by one or more of the following measures:

- Reorient or relocate the receiving antenna of the radio or television.
- Increase the distance separating the equipment and the receiver.
- Connect the equipment to an outlet on a different branch circuit than that of the receiver.
- Consult the dealer or an experienced radio/TV technician for help.

The user may find the following booklet helpful: *How to Identify and Resolve Radio-TV Interference Problems*. This booklet is available from the U.S. Government Printing Office, Washington, D.C. 20402.

## **Radio Frequency Interference Requirements – Canada**

This Class B digital apparatus meets the requirements of the Canadian Interference-Causing Equipment Regulations. Cet appareil numérique de la Classe B respecte toutes les exigences du Règlement sur le Matériel Brouilleur du Canada.

NOTE: To comply with FCC and Industry Canada exposure requirements, this device is approved for operations in a user's hand when there is a distance of 20 cm or more between the device antenna and the user's body.

## **CE Marking & European Union Compliance**

Products intended for sale within the European Union are marked with a CEMark which indicates compliance to applicable Directives and European Normes (EN), as follows. Amendments to these Directives or ENs are included: Normes (EN), as follows:

### **Applicable Directives:**

- Electromagnetic Compatibility Directive 89/336/EEC
- Low Voltage Directive 73/23/EEC

### **Applicable Standards:**

- EN 55 022 – Limits and Methods of Measurement of Radio Interference Characteristics of Information Technology Equipment.
- EN 50 082-1 – Electromagnetic Compatibility – General Immunity Standard, Part 1: Residential, Commercial, Light Industry.
- IEC 801.2 – Electromagnetic Compatibility for Industrial Process Measurement and Control Equipment, Part 2: Electrostatic Discharge Requirements.
- IEC 801.3 – Electromagnetic Compatibility for Industrial Process Measurement and Control Equipment, Part 3: Radiated Electromagnetic Field Requirements.
- IEC 801.4 - Electromagnetic Compatibility for Industrial Process Measurement and Control Equipment, Part 4: Electrical Fast Transients Requirements.
- EN 60 950 + Amd 1 + Amd 2 – Safety of Information Technology Equipment Including Business Equipment.

**socket**<sup>™</sup>



6410-00171 B

Printed in U.S.A.