

Enhanced CompactFlash Connection Kit with *Bluetooth*[®] Wireless Technology

Featuring a CompactFlash card and software for adding *Bluetooth* 2.0+EDR capability to Pocket PCs

User's Guide



Copyright Notice

Copyright © 2006 Socket Communications, Inc. All rights reserved.

Socket, the Socket logo and Mobility Friendly are registered trademarks of Socket Communications, Inc. Connection Kit with *Bluetooth* Wireless Technology is a trademark of Socket Communications, Inc. *Bluetooth* and the *Bluetooth* logos are trademarks owned by *Bluetooth* SIG, Inc., U.S.A. and licensed to Socket Communications, Inc. All other brand and product names are trademarks of their respective holders.

The Enhanced CF Connection Kit with *Bluetooth* Wireless Technology includes technology licensed under United States Patent Nos. 4,543,450, 4,603,320, 4,686,506, and 4,972,470.

Reproduction of the contents of this manual without the permission of Socket Communications is expressly prohibited. Please be aware that the products described in this manual may change without notice.

Feel free to contact SOCKET COMMUNICATIONS at:

Socket Communications, Inc.
37400 Central Court
Newark, CA 94560

Other than the above, Socket Communications can assume no responsibility for anything resulting from the application of information contained in this manual.

Socket Communications requests that you refrain from any applications of the Socket Connection Kit with *Bluetooth* Wireless Technology that are not described in this manual. Socket Communications also requests that you refrain from disassembling the SDIO or CF card. Disassembly will void the product warranty.

You can track new product releases, software updates and technical bulletins by visiting Socket's web page at: www.socketcom.com.

Table of Contents

1 Introduction	4
2 General Installation	6
3 Dial-up Networking	13
4 <i>Bluetooth</i> ActiveSync and LAN Access	35
5 Socket OBEX	43
6 Socket Dialer	57
7 <i>Bluetooth</i> Serial Port	60
8 <i>Bluetooth</i> Faxing and Printing	71
9 My Device Manager	77
10 <i>Bluetooth</i> Devices Folder	83
APPENDICES	
A Specifications	96
B Safety and Usage Tips	97
C Troubleshooting	99
D Technical Support	102
Limited Warranty	103
Regulatory Compliance	105

1 | Introduction

The Windows Mobile version of the Socket Enhanced CF Connection Kit with *Bluetooth*® Wireless Technology makes it easy to add *Bluetooth* 2.0+EDR capability to a Pocket PC. The Enhanced CF Connection Kit is perfect for connecting Pocket PCs wirelessly to your favorite *Bluetooth* enabled phone, headset, LAN access point, modem, computer, printer, GPS receiver, or other *Bluetooth* enabled device.



Socket's CF cards, both *Bluetooth* 1.1 and 2.0+EDR versions, are the only plug-in cards to incorporate all *Bluetooth* components, including antenna, within the CompactFlash Type I form factor.

About the Software

The Windows Mobile versions of the Enhanced CF Connection Kit with *Bluetooth* Wireless Technology features a complete software package:

- *Bluetooth* Setup Wizard — Helps you prepare your Pocket PC's device name and COM ports for *Bluetooth* connectivity.
- Get Connected! Wizard — Guides you through the process of connecting to your phone for dial-up networking.
- *Bluetooth* Devices folder — Basic utility for managing your *Bluetooth* connections. Includes the Device Discovery Wizard and Device Bonding Wizard.
- *Bluetooth* ActiveSync — Helps you connect to another *Bluetooth* enabled mobile computer to synchronize information.
- *Bluetooth* LAN Access — Helps you connect to a *Bluetooth* enabled access point for wireless Internet and network access.
- Socket OBEX — Allows you to exchange business cards, transfer files, and browse the contents of another mobile computer.
- Socket Dialer — Allows you to tap on a Contact to automatically connect to a *Bluetooth* phone and start dialing the selected number.

Get software updates at:

www.socketcom.com/support/support_bluetooth.asp

System Requirements

Minimum device requirements for CF card:

- Windows Mobile for Pocket PC 2003/2003 SE/5.0 with available CF or PC Card slot
- PC Card adapter required for use in PC Card slot

Package Contents

The Enhanced CF Connection Kit includes these items:

- Socket Enhanced Cordless Card (CompactFlash Type I)
- Software installation CD
- Software installation guide with copyright, warranty, and regulatory compliance information

Product Registration

Socket highly recommends that all customers register their Socket products. Registered users receive priority for technical support, product updates, and special offers. You can register online at: www.socketcom.com/prodreg.

Other Packages Available

Besides the Connection Kits for Windows Mobile, Socket offers these *Bluetooth* packages:

- Connection Kit with Adapter — Includes hardware and software for Windows Mobile, 98SE, Me, 2000, and XP. Purchase online at: www.socketcom.com/shop
- Windows Upgrade Kit — Designed for people who already own a CF Connection Kit for Windows Mobile and want to add support for notebook computers. Includes hardware and software for Windows 2000, and XP. Purchase online at: www.socketstore.com/product.asp?sku=2014297

2 | General Installation

This chapter covers general installation instructions for the Enhanced CF Connection Kit with *Bluetooth* Wireless Technology. After completing the installation instructions in this chapter, proceed to the appropriate chapter for your device and application.

Installation Summary

STEP 1: Install the software

STEP 2: Complete the *Bluetooth* Setup Wizard

STEP 3: Insert the card into your mobile computer

OPTIONAL: Turn Transmitter ON/OFF

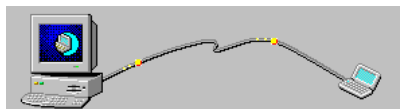


STEP 1: Install the Software

Note: The OBEX and Socket Dialer software are optional and must be installed separately after successful installation of the primary Connection Kit software.

Follow these steps to install the software BEFORE inserting the Socket Enhanced Cordless card.

1. Use ActiveSync and a serial/Ethernet/USB cable or cradle to make an active connection between the mobile computer and a host PC.



2. Insert the *Socket installation CD* into the host PC.
3. Use **My Computer** or **Windows Explorer** to access your CD-ROM drive. In the CD, click on **SETUP.EXE**



CD Drive

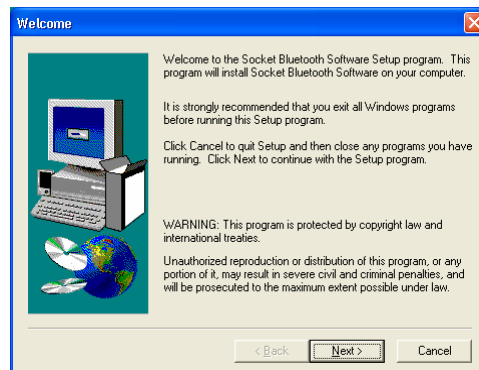


Setup.exe

4. A screen will appear for you to choose which language to install the software in. Click on the appropriate choice.
5. The Setup Center will launch in your browser. Follow the instructions on your screen to begin the software installation.
 - Read the information in the first screen, then click **Next**.
 - In the **Main Page**, click **Install Software**.
 - In the **Installation screen**, read the instructions for **Windows CE**, then click on the **Windows CE** link.

 The Mobile Connection		Socket Connection Kit
Welcome ----- Main Installation Documents 3rd Party Apps	Welcome to the Socket Connection Kit Setup Center Congratulations on your purchase of the Socket Connection Kit. This program is the starting point for installing the Socket software for Pocket PC 2000, Pocket PC 2002, Windows Mobile 2003, and Handheld PC 2000 as well as the Bluetooth Software Suite v1.09 for Windows 98SE, Me, 2000 and XP. Also included in the Socket Connection Kit Setup Center is access to the User Guides and Readme files. In addition, you can explore the CD for 3rd party applications that are available to enhance using the product . Please register your product at http://www.socketcom.com/prodreg	

6. In the File Download screen, click **Run**.
7. If a Security Warning screen appears, click **Run**.
8. The Socket *Bluetooth* Software Setup program will begin. Follow the wizard to install the software on your Pocket PC.



9. After installing the primary software for the Connection Kit, you can choose to also install the software for Socket OBEX and/or the Socket Dialer. Follow the same procedure to install these optional software programs.

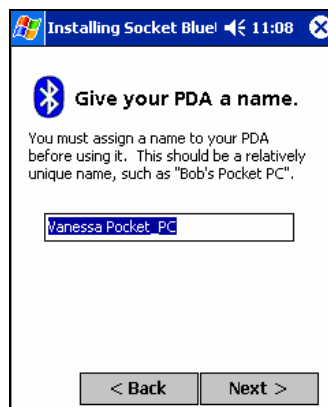
Note: The Socket Dialer is not compatible with all Bluetooth enabled phones. Socket has verified compatibility with Nokia and Ericsson phones and incompatibility with the Motorola 270c, NTT DoCoMo Paldio 633S, and Sony au C413S phones. Results may vary with other phones that are not officially supported by the Socket Connection Kit.

STEP 2: Complete the *Bluetooth* Setup Wizard

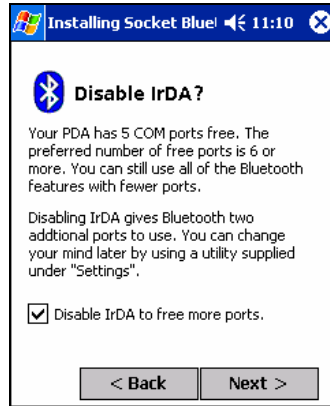
1. After you install the software, the Socket *Bluetooth* Setup Wizard will automatically launch on your mobile computer. Tap Next>.



2. In the next screen, give your mobile computer a friendly name. Tap Next>.



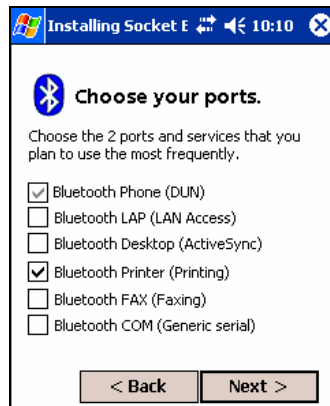
3. If your mobile computer has fewer than 6 COM ports available, the Disable IrDA? Screen will appear. If desired, disable IrDA to free more ports. Tap Next>.



Note: This will disable the IR port on a mobile computer. To readjust the IrDA settings, go to Start | Settings | System | IrDA. Some devices do not allow you to disable IrDA.



4. In the next screen, choose the two ports and services that you plan to use most often. After making your selections, tap Next>.



Note: You cannot disable the Bluetooth Phone port.

5. In the last screen, read the instructions and tap Finish.
6. Soft reset your mobile computer by pressing the reset button. This is necessary for changes to take effect.

Pocket PC 2003 only: Do not soft reset the device when a Socket card is inserted, or errors may occur in application(s) using the card. If errors occur, remove the card and soft reset the device. Wait for the device reset to finish before you re-insert the card.

STEP 3: Insert the Card

Important!

***Do NOT insert the card upside down or shove the card in too hard.
Damage may occur!***


***Pocket PC 2003SE/2003 only: Wait for the device reset to finish before
you insert the card!***

Insert the card into your mobile computer's card slot. Make sure the card is right-side up.

- Insert a CompactFlash or SDIO card directly into a slot of its size. When properly inserted, the CF card will be fully contained within the slot, whereas the SDIO card will protrude a little from the slot.




- If using a PC Card slot, first insert the CF Card into a CompactFlash-to-PC Card adapter. When properly inserted, the card and adapter will be fully contained within the slot.

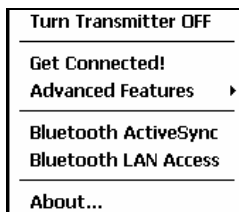
After the Pocket PC recognizes the card, the *Bluetooth* icon  will appear at the bottom of the Today screen.

Note: If you bought a kit without a PC Card adapter, they are available separately from Socket at www.socketcom.com/shop

OPTIONAL: Turn Radio Transmitter ON/OFF

You may want to turn off the radio transmitter to save power or if you are entering an area with radio restrictions (e.g., an airplane).

1. After you insert the card, the *Bluetooth* icon  should appear in the task bar (visible from the *Today* screen for Pocket PCs). Tap on the icon.
2. In the pop-up menu, select **Turn Transmitter OFF**.



Note: The menu will list Transfer via Bluetooth if you installed Socket OBEX.

3. The card's radio transmitter will shut off. The *Bluetooth* icon in the task bar will become gray, as will relevant menu options (e.g., *Get Connected!*).
4. To turn the radio transmitter back on, tap on the gray *Bluetooth* icon. In the pop-up-menu, select **Turn Transmitter ON**.

3 | Dial-up Networking

This chapter covers how to connect a mobile computer running the Enhanced CF Connection Kit with *Bluetooth* Wireless Technology to a *Bluetooth* enabled phone for dial-up networking.



Before you begin the instructions in this chapter, be sure to complete the general installation procedures, as explained in Chapter 2.

If you want to dial up to a network using a *Bluetooth* enabled modem, instead of the Get Connected! Wizard, complete the Device Discovery Wizard and Bonding Wizard from the *Bluetooth* Devices folder, as described in Chapter 10. Afterwards, dial up to your network as described in this chapter.

Note: Since you have a Bluetooth enabled phone, you may want to install the Socket Dialer onto your mobile computer. With the Socket Dialer, you simply need to tap on a number in your Contacts list, and your Bluetooth enabled phone will begin dialing the number. Refer to Chapter 6 for more information.

Setup Summary for Dial-up Networking

- STEP 1: Prepare network information
- STEP 2: Get Connected! to *Bluetooth* Phone
- STEP 3: Dial up to Your Network

OPTIONAL: Set up Automatic Phone Connections

STEP 1: Prepare Network Information


Consult with your network administrator/MIS technician to obtain any necessary network settings. The necessary settings may include the following (not all may be needed):

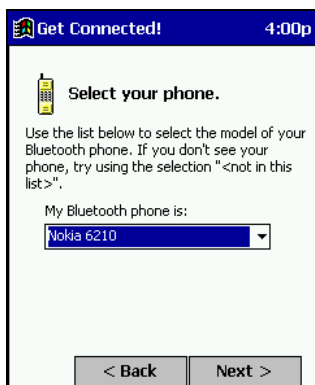
- Dial-up number, user name and password
- Use of either DHCP or Static IP to assign IP addresses
- Use of slip, software compression or IP header compression

STEP 2: Get Connected! to *Bluetooth* Phone

The Get Connected! Wizard guides you through a one-time setup process that prepares the mobile computer and phone for *Bluetooth* connections. The wizard varies depending on which phone you want to connect to.

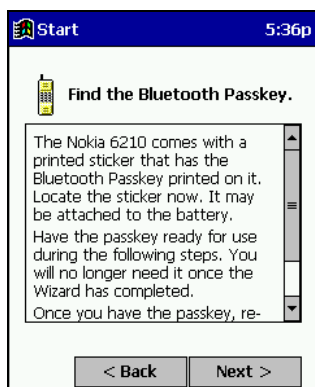
Ericsson, Nokia 6210, NTT DoCoMo, Siemens, Sony Phones

1. Tap on the *Bluetooth* task bar icon (visible from the Today screen for Pocket PCs). In the pop-up menu, select Get Connected! 
2. The Get Connected! Wizard will appear. Tap Next.
3. In the second screen, use the drop-down list to select your phone. The wizard will provide tailored instructions based on your selection. Tap Next.



This example is for a Nokia 6210 phone. Your phone may differ.

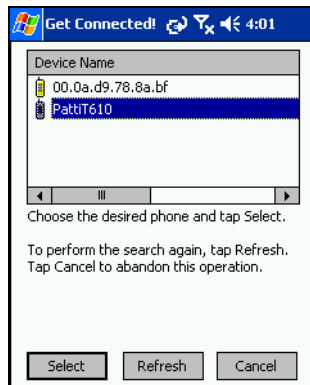
4. Follow the next screen(s) to prepare your specific phone for *Bluetooth* connections. You may need to do 1, 2 or all of the following steps:
 - a. Naming your *Bluetooth* enabled phone
 - b. Setting your *Bluetooth* enabled phone in Discoverable mode
 - c. Preparing your *Bluetooth* passkey



5. The Pocket PC will search for *Bluetooth* enabled phones in range.



6. When the search is complete, a list of the discovered *Bluetooth* enabled phones will appear. Choose the phone that you wish to connect to, and tap Select. A service discovery phase will begin, lasting 5-10 seconds.



7. As prompted in the next screen, prepare your phone for bonding. For instructions on setting your phone to “Bondable” or “Pairable” mode, refer to your phone manual. Have your passkey ready, then tap Next.
8. In the next screen, enter the passkey. Tap Reply.

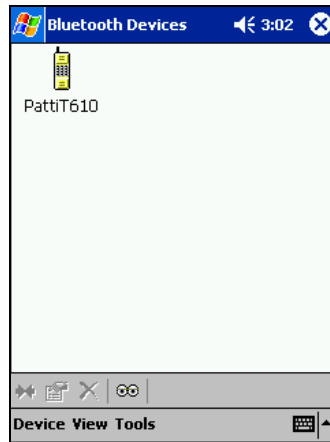


Note: Exchanging passkeys allows the phone and mobile computer to set up an encrypted data link for secure communications.

9. The phone may then either automatically accept the passkey or ask you to enter one. If asked for a passkey, use the same one you entered on the Pocket PC.

Ericsson T68/T68i only: When the phone asks you if you want to bond, select 2: Add to paired devices. Do NOT press ACCEPT.

10. In the last screen, tap **Finish**. After successfully connecting, the phone will be saved to the **Bluetooth Devices** folder.



In the Today screen, the *Bluetooth* icon will also blink.

You will not need to run the Get Connected! Wizard again unless you plan to switch between different phones.

Note: You may also switch between different phones by assigning a new “favorite phone” in the Bluetooth Devices folder.

Motorola Timeport 270C, Nokia 3650/6310/7650/8910/8910i

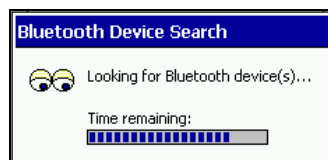
1. Tap on the *Bluetooth* task bar icon (visible from the *Today* screen for Pocket PCs). In the pop-up menu, select *Get Connected!*
2. The *Get Connected!* wizard will appear. Tap *Next*.
3. In the second screen, use the drop-down list to select your phone. The wizard will provide tailored instructions for your phone. Tap *Next*.



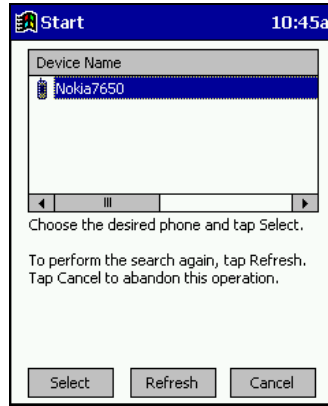
Note: The screens below are for the Nokia 7650. Your phone may differ.



4. As directed in the next screen, assign the phone a unique name. Tap *Next*. As directed in the next screen, set the phone in *Discoverable* mode. Then tap *Next*.
5. The Pocket PC will begin to search for the phone.



- When the search is over, a list of the discovered phones will appear.

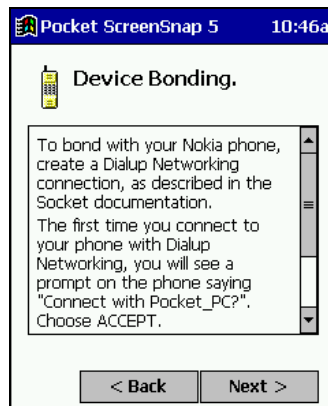


Choose the phone that you wish to connect to, and tap **Select**. A service discovery phase will begin, about 5-10 seconds.

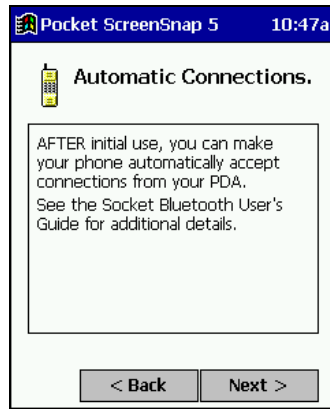
- The next two screens describe procedures that you can only complete outside of the wizard, while creating a dial-up connection. Read through each screen but do not complete the described procedures until you exit the wizard.

Directions for these procedures are also provided in *STEP 3: Dial-up to Your Network*. The two procedures are:

Bonding with your phone — this must be completed when you dial up to the network for the first time in order to complete the *Bluetooth* connection.



Automatic Connections — this procedure is optional but will make future *Bluetooth* connections more convenient.



8. Continue to the last screen of the wizard and tap **Finish**.
9. Now proceed to **STEP 3** to complete the bonding process and, if desired, set up automatic connections.

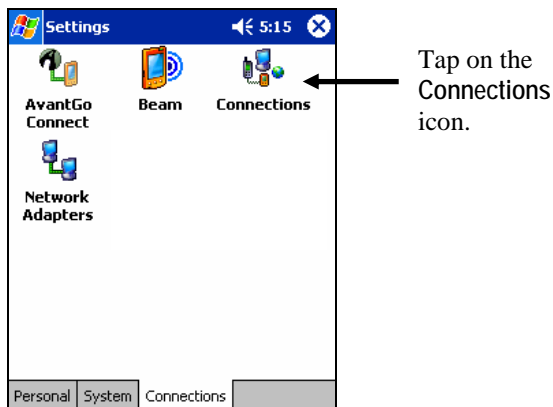
STEP 3: Dial-up to Your Network

Complete the following steps to create a new *Bluetooth* connection. Before setting up dial-up networking, prepare yourself with dial-up information and other necessary settings for your office network or ISP (as described in STEP 1).

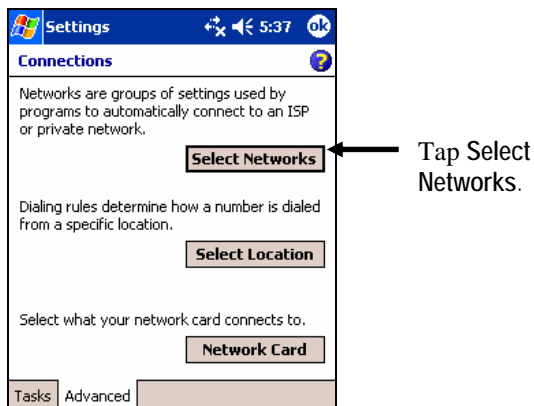
Pocket PC 2003SE/2003

Note: These instructions are for a standard dial-up connection to an Internet Service Provider (ISP). If you want to connect to a work network and/or VPN/proxy server, please refer to your Pocket PC documentation for instructions.

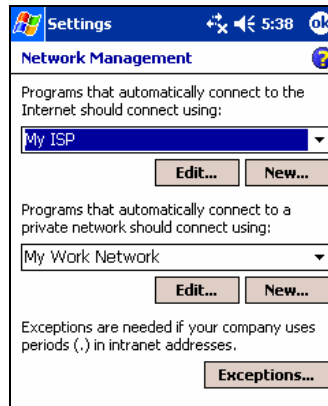
1. Go to Start | Settings | Connections | Connections.



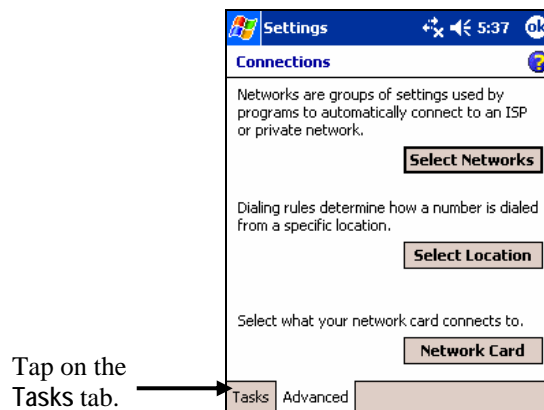
2. In the next screen, tap on the Select Networks button.



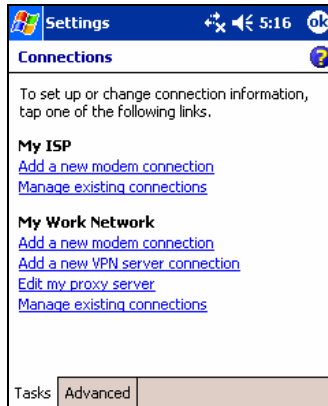
3. In the Network Management screen, make sure My ISP is selected in the top field, and My Work Network is selected in the bottom field. Tap ok.



4. The Connections screen will appear again, showing the Advanced tab. Tap on the Tasks tab.

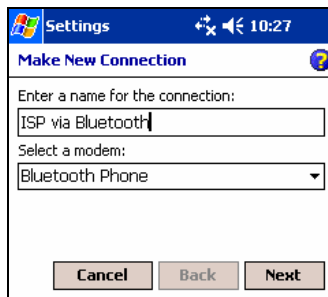


5. In most cases, you should tap **Add a new modem connection** under **My ISP**.

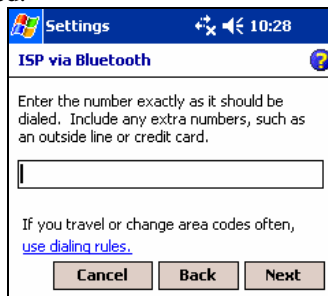


6. In the next screen, enter the following:
- Enter a name... Enter a name, such as “ISP via Bluetooth”
 - Select a modem: Select **Bluetooth Phone**

Tap **Next**.

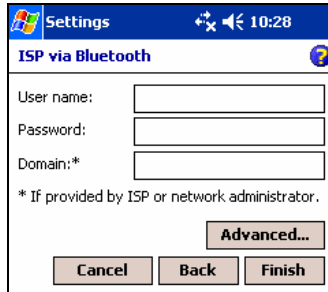


7. In the next screen, enter the dial-up number exactly how it should be dialed from your *Bluetooth* enabled phone. Include the country and area code if needed.

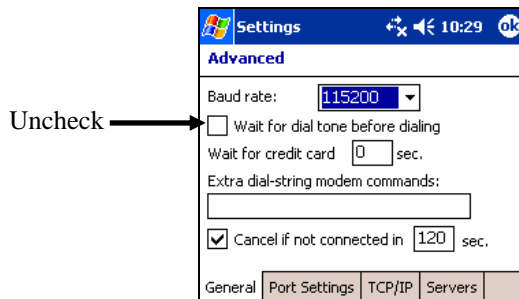


*Note: If you plan to travel or change area codes often, tap on **use dialing rules** to configure different dialing locations.*

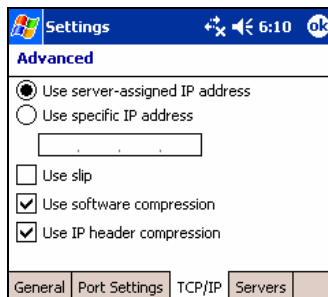
8. In the next screen, enter the User name and Password. Tap Advanced...



9. In the General screen, enter the following settings:
- Baud rate: 115200
 - Wait for dial tone before dialing: Uncheck




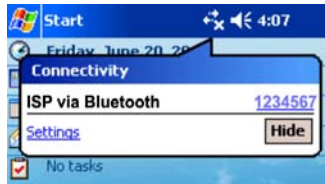
10. The next step varies depending on if your network uses DHCP or a static IP address.
- If your network uses DHCP, tap ok. In the last screen, tap Finish.
 - If you need to enter IP addresses, tap on the TCP/IP and Servers tabs to enter the necessary settings. Tap ok. In the last screen, tap Finish.



Now you have finished creating a connection and are ready to dial up to your network. Socket recommends using either of two methods for dialing in and connecting to your network.

➤ METHOD 1: TAP ON THE CONNECTION ICON

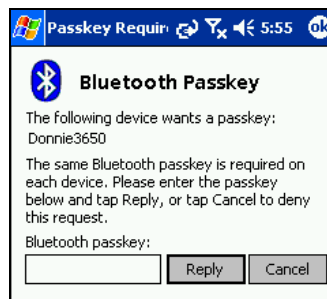
- a) Tap on the Connection icon in the navigation bar at the top of the screen. It should have an “X” to show that you are not connected. 
- b) A bubble should appear with the dial-up connection you just created. Verify the phone number, then tap on the phone number. The phone will try to connect.



Note:

- Multiple connections may be listed. Tap on the phone number of the connection you want to dial.
 - If the connection you want is not listed, tap on the **Settings** link in the bubble. Tap **Manage Existing Connections** and select the connection you want to use. Tap **ok**.
- c) Depending on your phone and connection settings, you may need to enter a passkey and/or a password before the phone will start to dial:

- If you have a **Nokia 3650/6310/7650/8910/8910i** or **Motorola Timeport 270C**, you must complete the bonding process:
 - a. The first time you try to connect, the phone will ask if you want to bond. On Motorola, enter **GRANT**; on Nokia, enter **ACCEPT**.
 - b. Make up a 4-16 digit passkey, enter it on the phone, then enter it on the Pocket PC.



- c. After successfully bonding with your phone, you may want to set up your phone for automatic connections. For instructions, refer to “Set up Automatic Phone Connections,” at the end of this chapter.

- If you did not save the dial-up password, the Network Log On screen may appear. Enter the Password and tap OK.



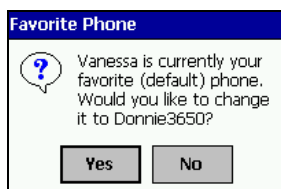
- d) The device will begin dialing.



After the device connects to the ISP, the “X” will disappear from the connection icon to indicate an active dial-up or network connection



- e) To use a different *Bluetooth* enabled phone for dial-up networking, you can use the same connection setup, but you must make the new phone your favorite. Just run the **Get Connected! Wizard** again, select the new phone, and make it your new favorite when prompted.

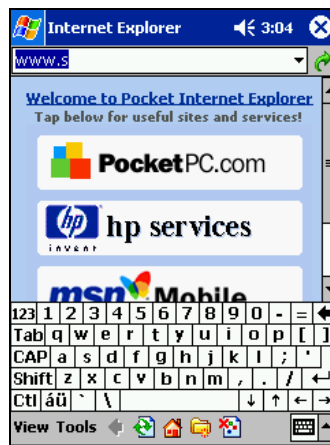


Alternatively, you can use the *Bluetooth* Devices folder to change your favorite phone (see Chapter 10 for instructions).

➤ METHOD 2: DIAL AUTOMATICALLY FROM THE APPLICATION

Note: After you have set up a dial-up connection, the Connection Manager will automatically try to connect whenever you insert the card and try to use Pocket Internet Explorer, Pocket Inbox or any other program that requires a dial-up connection.

- a) Start the program that uses a dial-up connection.
- b) Enter a request for receiving and/or transmitting information (e.g., in Pocket Internet Explorer, enter a new URL and tap “Go”).



- c) The mobile computer will automatically try to connect. A bubble will appear, reporting the connection status.



Note: If the phone number or dialing location is wrong, tap on the Settings link in the bubble. Tap Manage Connections and Edit the properties of your connection.

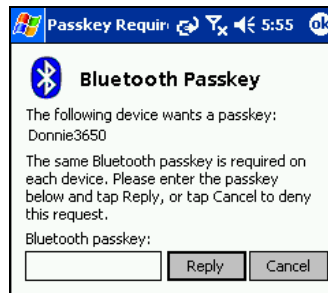
d) Depending on your phone and connection settings, you may need to enter a passkey and/or a password before the phone will start to dial:

- If you have a **Nokia 3650/6310/7650/8910/8910i** or **Motorola Timeport 270C**, you must complete the bonding process:

a. The first time you try to connect, the phone will ask if you want to bond. On Motorola, enter GRANT; on Nokia, enter ACCEPT.



b. Make up a 4-16 digit passkey, enter it on the phone, then enter it on the Pocket PC.



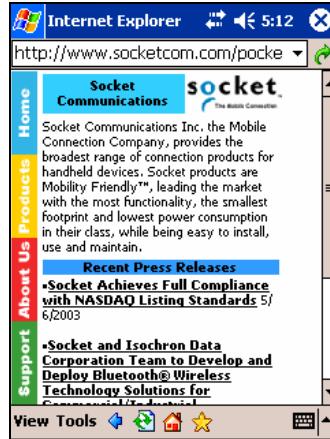
c. After successfully bonding with your phone, you may want to set up your phone for automatic connections. For instructions, refer to "OPTIONAL: Set up Automatic Phone Connections," at the end of this chapter.

- If you did not save the dial-up password, the Network Log On screen may appear. Enter the Password and tap OK.



e) When the mobile computer starts calling, you should see the call status on both the mobile computer screen and phone display.

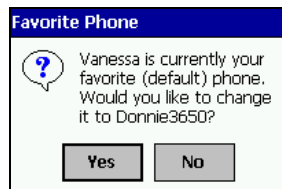
- f) After the mobile computer connects, it will receive/transmit the information as requested (e.g., Pocket Internet Explorer will display the requested website). Additionally, the connection icon will change to indicate that you have connected.



Connection icon: (Navigation bar at top of screen)
Indicates an active dial-up or network connection



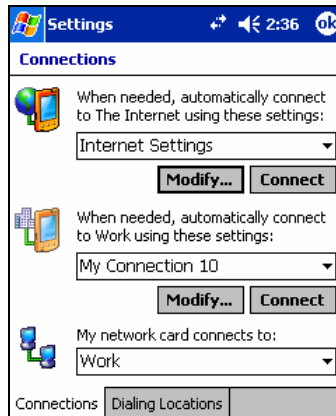
- g) To use a different *Bluetooth* enabled phone for dial-up networking, you can use the same connection setup, but you must make the new phone your favorite. Just run the **Get Connected! Wizard** again, select the new phone, and make it your new favorite when prompted.



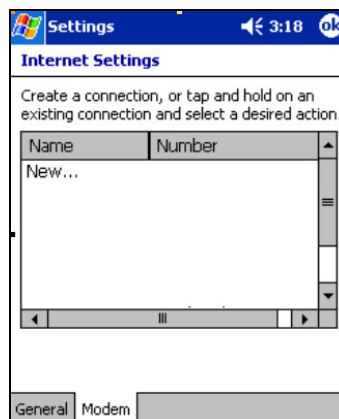
Alternatively, you can use the *Bluetooth* Devices folder to change your favorite phone (see Chapter 10 for instructions).

Pocket PC 2002

1. Go to Start | Settings. Tap on the Connections tab. Tap on the Connections icon.
2. In the top field, select Internet Settings. Underneath, tap Modify...

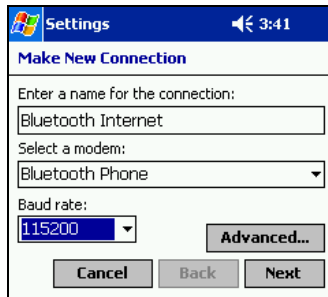


3. In the next screen, tap New...



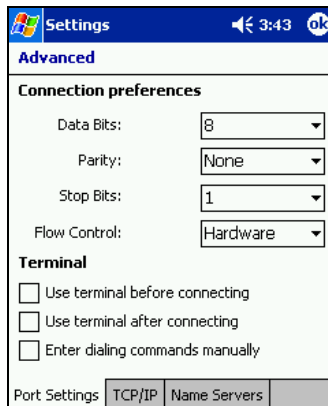
4. In the next screen, enter the following settings:
 - Enter a name...: Enter a name for the dial-up connection.
 - Select a modem: Select Bluetooth Phone.
 - Baud Rate: Select 115200.

Tap Advanced...

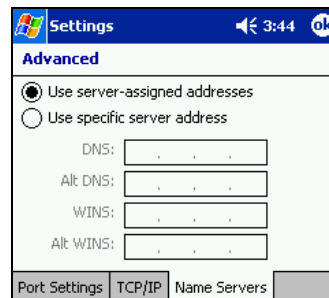
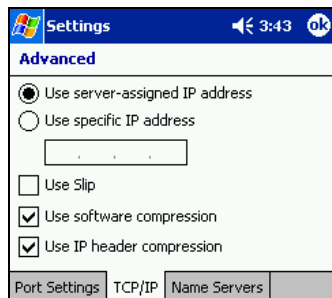


Note: Remember what you name the connection. You will need it when dialing up to it.

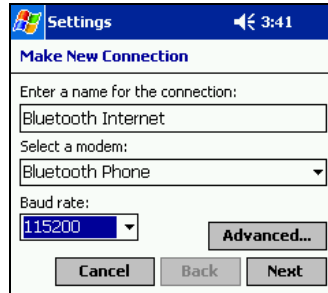
5. The Port Settings screen will appear. Do not change any settings.



6. If needed, tap on the TCP/IP and/or Name Servers screens to enter any necessary settings for your office network or ISP. Tap ok.



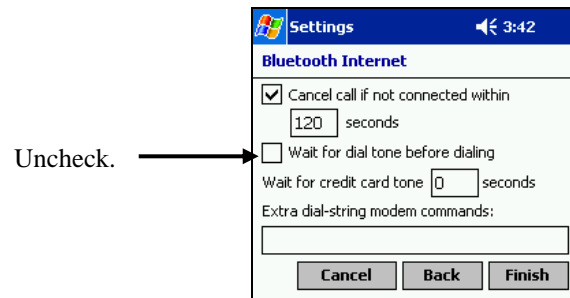
7. You will return to the first screen. Tap Next.



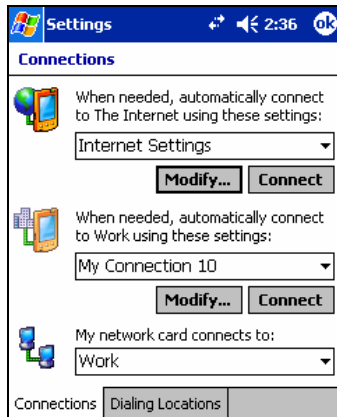
8. In the Phone number field, enter the dial-up number. Tap Next.



9. Uncheck Wait for dial tone before dialing. Tap Finish.



10. Now you are ready to start the connection. In the Connections screen, under Internet Settings, tap Connect.

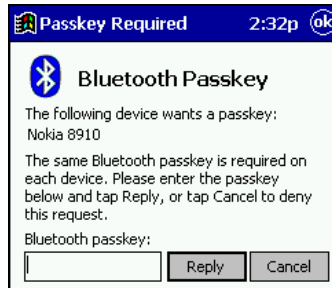


11. In Network Log On, verify the dialing settings. Tap OK.



12. ONLY FOR MOTOROLA TIMEPORT 270C OR NOKIA 3650/6310/7650/8910/8910i:

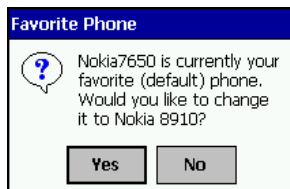
- a) After you tap Connect for the first time, the phone will display a message asking if you want to bond. On Motorola, enter GRANT; on Nokia, enter ACCEPT.
- b) Make up a 4-16 digit passkey, enter it on the phone, then enter it on the Pocket PC.



Note: The Bluetooth icon in the Today screen will blink to indicate a connection.

- c) After successfully bonding with your phone, you may want to set up your phone to automatically bond with your Pocket PC without requiring a passkey every time. For instructions, refer to “OPTIONAL: Set up Automatic Phone Connections,” at the end of this chapter.

13. To use a different phone for dial-up networking, you can use the same connection setup, but you must make the new phone your favorite. Just run the **Get Connected! Wizard** again, select the new phone, and make it your new favorite when prompted.



Alternatively, you can use the *Bluetooth* Devices folder to change your favorite phone (see Chapter 10 for instructions).

OPTIONAL: Set up Automatic Phone Connections

Some Motorola and Nokia *Bluetooth* enabled phones let you set up automatic connections with devices that they have successfully bonded with, without requiring you to manually enter a password every time you try to connect. If you would like to set up automatic connections between your phone and your mobile computer, follow the appropriate instructions below for your specific phone.

Motorola Timeport 270C:

- On the phone, press MENU.
- Scroll to **Settings**, then press SELECT.
- Scroll to **Connection**, then press ON.
- On **Bluetooth Link**, press SELECT.
- Scroll to **Devices**, then press SELECT.
- Choose your mobile computer, then press EDIT.
- Scroll to **Access:Ask**, then press CHANGE.
- Scroll to **Automatic**, then press SELECT. Press DONE.



Nokia 3650/7650:

- On the phone, press MENU.
- Scroll to **Connectivity**, then press Options.
- The **Open** option should be highlighted. Press Select.
- The **Bluetooth** option should be highlighted. Press Options.
- The **Open** option should be highlighted. Press Select.
- Scroll to the right tab to access the Paired devices list. Highlight your mobile computer, then press Options.
- Scroll to **Set as authorised**, then press Select.
- In the confirmation screen, press Yes .

Nokia 6310/8910/8910i:

- On the phone, press MENU.
- Scroll to **10 Bluetooth**, then press SELECT.
- Scroll to **4 View Paired Devices**, then press SELECT.
- Highlight the **Pocket PC**, then press OPTIONS.
- Scroll to **3 Request Connection Authorization**, then press NO.

4 | Bluetooth ActiveSync and LAN Access


This chapter explains how to use the *Bluetooth* ActiveSync and *Bluetooth* LAN Access features of the Enhanced Connection Kit with *Bluetooth* Wireless Technology.

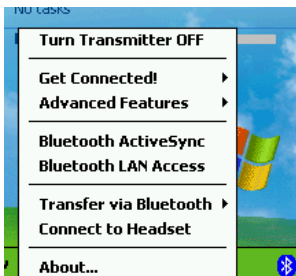
The *Bluetooth* ActiveSync feature makes it easy to connect to a *Bluetooth* enabled notebook or desktop computer running ActiveSync 3.x or greater to synchronize information.

The Bluetooth LAN Access feature helps you connect to a *Bluetooth* enabled LAN access point for wireless access to the Internet and private networks.



Bluetooth ActiveSync

1. Tap on the *Bluetooth* icon . In the pop-up menu, select **Bluetooth ActiveSync**.



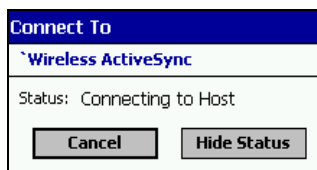
Note: The menu will list Transfer via Bluetooth only if you installed Socket OBEX.

2. The next screens will vary depending on if you saved any notebook or desktop computers to the *Bluetooth* Devices folder, and if you designated one as your favorite. Please refer to the appropriate scenario:

SCENARIO #1: In the *Bluetooth* Devices folder, you already designated a notebook or desktop computer as your favorite.



- (a) When you tap **Bluetooth ActiveSync**, your mobile computer will automatically try to connect to your favorite computer. The **Connect To 'Wireless ActiveSync'** screen will appear, reporting the connection status.



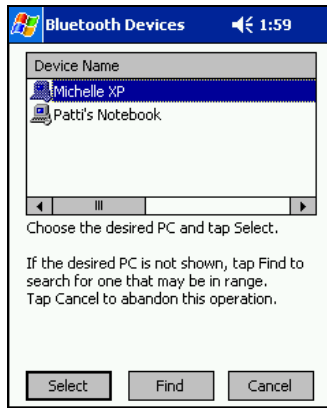
- (b) After a successful connection is made, the status screen will report **Connected**. Now you are ready to synchronize files, if desired.



SCENARIO #2: Your *Bluetooth* Devices folder contains notebook and/or desktop computers, but you did not designate one as your favorite.

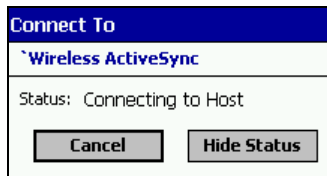


- (a) When you tap on **Bluetooth ActiveSync**, a screen will appear listing notebook and desktop computers saved in the *Bluetooth* Devices folder. Choose the computer you want to connect to and tap **Select**.



*Note: If the computer you want is not listed, tap **Find** to begin a search. Proceed as described in Scenario #3 on the next page.*

- (b) Your mobile computer will attempt to connect to the computer you selected. A **Connect To 'Wireless ActiveSync'** screen will appear, reporting the status of the connection.



- (c) After a successful connection is made, the status screen will report **Connected**. Now you are ready to synchronize files, if desired.



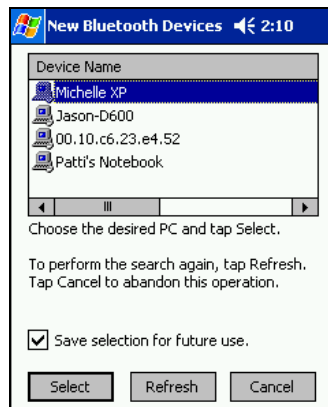
SCENARIO #3: You did not save any notebook or desktop computers to the *Bluetooth Devices* folder.

- (a) When you tap **Bluetooth ActiveSync**, a *Bluetooth Device Search* will automatically begin.



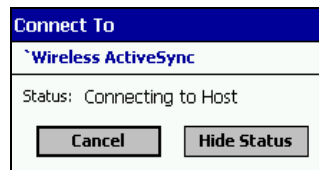
*Note: You can also start the device search by tapping **Find** in the *Bluetooth Devices* screen. See Scenario #2 on the previous page.*

- (b) After the search is complete, select the computer you wish to connect to and tap **Select**. If the computer you want is not listed, make sure the computer is discoverable and tap **Refresh** to search again.



If you would like to save the new computer to your *Bluetooth Devices* folder, check **Save selection for future use**.

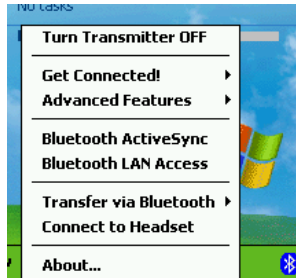
- (c) After you tap **Select**, a service discovery phase will begin. The **Connect To 'Wireless ActiveSync'** screen will appear, reporting the status of your connection.



- (d) After a successful connection is made, the status screen will report **Connected**. Now you are ready to synchronize, if desired.

Bluetooth LAN Access

1. Tap on the *Bluetooth* icon. In the pop-up menu, select **Bluetooth LAN Access**.



Note: The menu will list Transfer via Bluetooth only if you installed Socket OBEX.

2. The next screens will vary depending on if you saved any access points to your *Bluetooth* Devices folder, and if you designated one as your favorite. Please refer to the appropriate scenario:

SCENARIO #1: Your *Bluetooth* Devices folder contains access points, but you did not designate one as your favorite.



- (a) When you tap **Bluetooth LAN Access**, a screen will appear listing access points saved in your *Bluetooth* Devices folder. Choose the access point you want to connect to and tap **Select**.



*Note: If your access point is not listed, tap **Find** and proceed as described in Scenario #3.*

- (b) Your mobile computer will try to connect to the selected access point.



- (c) If your LAN requires a passkey, a screen will appear, asking for the passkey. Enter the passkey, then tap Reply.



- (d) After a successful connection is made, the status screen will report Connected.

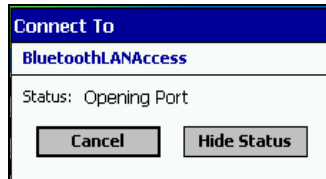


- (e) Now you are ready to access your LAN for Internet access, network files, etc.

SCENARIO #2: In the *Bluetooth* Devices folder, you already designated an access point as your favorite.



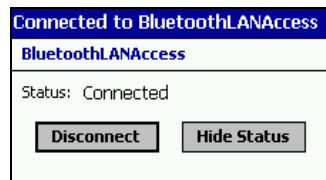
- (a) When you tap **Bluetooth LAN Access**, your mobile computer will automatically try to connect with your favorite access point.



- (b) If your LAN requires a passkey, a screen will appear, asking for the passkey. Enter the passkey, then tap **Reply**.



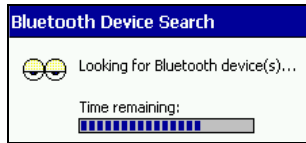
- (c) After a successful connection is made, the status screen will report **Connected**.



- (d) Now you are ready to access your LAN for Internet access, files, etc.

SCENARIO #3: You did not save any access points to the *Bluetooth* Devices folder

- (a) When you tap *Bluetooth* LAN Access, the mobile computer will automatically begin to search for new *Bluetooth* enabled devices.



Note: You can also start the device search by tapping Refresh in the New Bluetooth Devices screen. See Scenario #1.

- (b) After the search is complete, select the access point you wish to connect to. Tap Select. If the access point is not listed, tap Refresh to search again.



If you would like to save the new access point to your *Bluetooth* Devices folder, check Save selection for future use.

- (c) After you tap Select, a service discovery phase will begin, lasting 5-10 seconds. If the LAN requires a Passkey, a screen will appear, asking for the Passkey. Enter the passkey, then tap Reply.



- (e) After a successful connection is made, the screen will report Connected.

5 | Socket OBEX

This chapter explains how to use the Socket OBEX (object exchange) application to trade business cards, contacts or files with another *Bluetooth* enabled device that supports OBEX.

Socket's *Bluetooth* OBEX application supports five operations:

- Exchange Business Cards
- Send a Contact
- Send a File
- Browse Remote Device
- Receive Contact or File
- Enable File Sharing

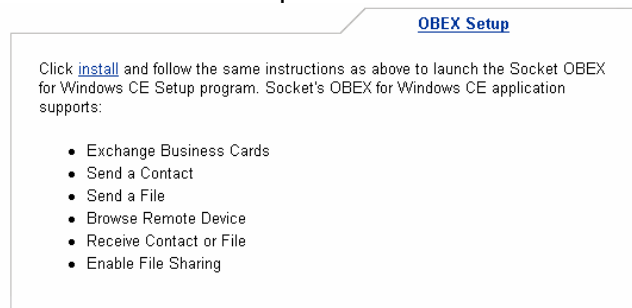
The first four operations — exchange business cards, send a contact, send a file, and browse remote device — are client-oriented. They involve initiating an object exchange.

The last two operations — receive contact or file and enable file sharing — are server-oriented. They involve accepting objects in an exchange initiated by another *Bluetooth* enabled device.

Important!

If you have not done so already, be sure to run the OBEX Installer from the Socket installation CD. Otherwise, you will not be able to perform any OBEX operations with the Socket card.

In the Socket Connection Kit Setup Center, on the Installation page, scroll down and click on the OBEX Setup link.



After you install Socket OBEX, the Transfer via Bluetooth option will appear in the Bluetooth menu for you to select OBEX operations.

Exchange Business Cards

1. Make sure both *Bluetooth* enabled devices have a business card assigned to them.

Note: If each device does not have a business card assigned to it, you will not be able to exchange business cards.

To assign a business card to your mobile computer, do the following:

- Tap on the *Bluetooth* icon. In the pop-up menu, tap **Advanced Features | My Bluetooth Device**.
- Tap on the **Object Sharing** tab. Under **My business card**, tap **Assign...**



- In the next screen, select your business card and tap **ok**. If your business card is not listed, tap on the **Contacts** button to create one.



- When you return to the **Object Sharing** screen, tap **ok**.

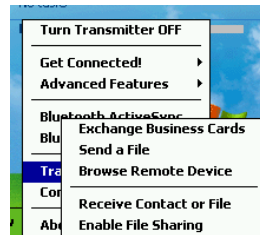
2. Make sure the other *Bluetooth* enabled device is set up to receive a business card. The device must support the OBEX Object Push profile.



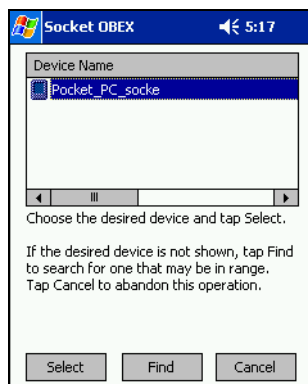
IMPORTANT! *If the other device is not set up to receive a business card, you will not be able to send it a business card!*

Note: If the other device is also using the Socket Bluetooth Connection Kit, you can set it up to receive a contact by tapping the Bluetooth icon. In the pop-up menu, tap Transfer via Bluetooth | Receive Contact or File.

2. Now you are ready to exchange business cards. Tap on the *Bluetooth* icon. In the pop-up menu, tap Transfer via Bluetooth | Exchange Business Cards.



3. If your mobile computer has no devices saved to the *Bluetooth* Devices Folder, it will begin to search for *Bluetooth* enabled devices in range.
4. Select the *Bluetooth* enabled device you wish to exchange business cards with. If the device is not listed, tap Find to initiate another search.



5. Your mobile computer will begin to exchange business cards. After the exchange, the new business card should appear in your Contacts list.

Note: Depending on the remote device's capabilities, it may only accept your business card but not send one to your device.

Send a Contact

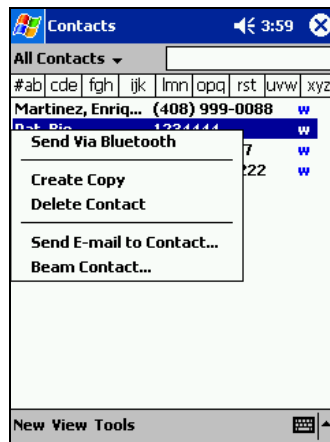
1. Make sure the other *Bluetooth* enabled device is set up to receive a contact. It must support the OBEX Object Push server profile. Refer to the documentation that came with the device for instructions.



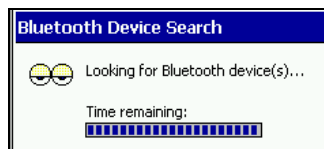
IMPORTANT! *If the other device is not set up to receive a contact, you will not be able to send it a contact!*

Note: If the other device is also using the Socket Bluetooth Connection Kit, you can set it up to receive a contact by tapping the Bluetooth icon. In the pop-up menu, tap Transfer via Bluetooth | Receive Contact or File.

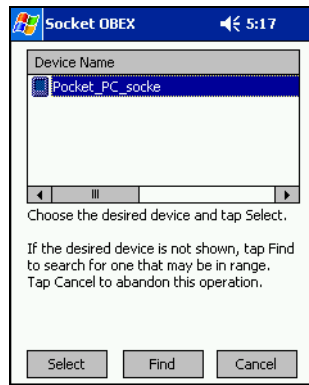
2. Now you are ready to send a contact. Go to your **Contacts** folder. Tap and hold your stylus on the contact(s) you would like to send. In the pop-up menu, select **Send Via Bluetooth**.



3. If your mobile computer has no devices saved to the *Bluetooth* Devices Folder, then it will begin to search for *Bluetooth* enabled devices in range.



4. Select the *Bluetooth* enabled device you wish to send the contact(s) to.
If the desired device is not listed, tap **Find** to initiate another search.



5. Your mobile computer will process and send the contact(s).



Send a File

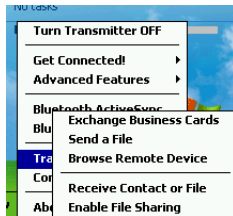
1. Make sure the other *Bluetooth* enabled device is set up to receive a file. It must support the OBEX Object Push server profile. Refer to the documentation that came with the device for instructions.



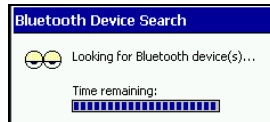
IMPORTANT! If the other device is not set up to receive a file, you will not be able to send it a file!

Note: If the other device is also using the Socket Bluetooth Connection Kit, you can set it up to receive a file by tapping the Bluetooth icon. In the pop-up menu, tap Transfer via Bluetooth | Receive Contact or File.

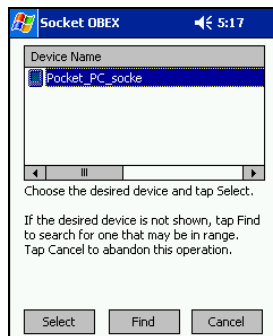
2. Now you are ready to send a file. Tap on the *Bluetooth* icon. In the pop-up menu, tap Transfer via Bluetooth | Send a File.



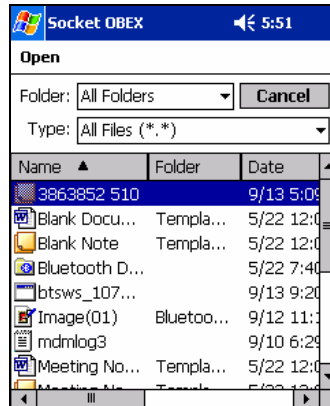
3. If your mobile computer has no devices in the *Bluetooth* Devices Folder, then it will begin to search for *Bluetooth* enabled devices nearby.



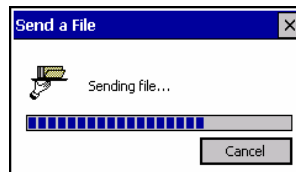
4. Select the *Bluetooth* enabled device you wish to send a file to. If the desired device is not listed, tap **Find** to initiate another search.



5. In the next screen, tap on the file you wish to send. You can use the **Folder** and **Type** drop-down menus to search for your file. Also, you can scroll horizontally to view the folder, date, size, type, and location of each file.



6. Your mobile computer will send the file.



Browse Remote Device

The *Bluetooth* File Explorer lets your mobile computer share files with another *Bluetooth* enabled device. The other device must support the OBEX File Transfer server profile.

This section covers the following file transfer operations:

- Prepare for file transfer
- Send/receive file(s) or folder(s)
- Create a folder
- Delete file(s) or folder(s)
- Refresh remote view
- Connect/disconnect
- Exit the program

Note: “Local device” refers to the mobile computer you are running Socket OBEX from. “Remote device” refers to the Bluetooth device you are trying to transfer files to.

Prepare for File Transfer

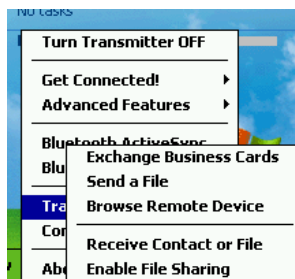
1. Make sure the remote device has file sharing enabled. It must support the OBEX File Transfer server profile.



IMPORTANT! If the other device is not set up to share files, you will not be able to transfer files to it!

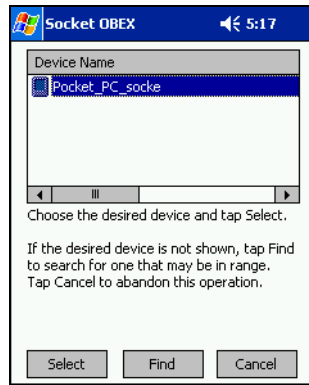
Note: If the other device is also using the Socket Bluetooth Connection Kit, you can enable file sharing by tapping the Bluetooth icon. In the pop-up menu, tap Transfer via Bluetooth | Enable File Sharing.

2. Now you are ready to browse the remote device. Tap on the *Bluetooth* icon. In the pop-up menu, tap Transfer via Bluetooth | Browse Remote Device.



3. If you did not save any devices to the *Bluetooth* Devices Folder that support OBEX File Transfer, then your mobile computer will begin to search for *Bluetooth* enabled devices in range.

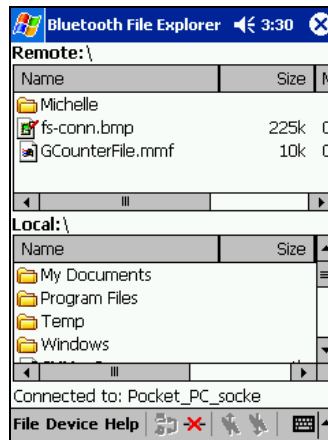
4. Select the *Bluetooth* enabled device that you wish to browse. If the desired device is not listed, tap **Find** to initiate a search.



5. Your mobile computer will establish a file sharing connection.



6. After the devices successfully connect, the *Bluetooth File Explorer* will appear. Half of the screen shows contents of the remote device, while the other half shows contents of your device (the local device). The very bottom of the screen reports the connection status.

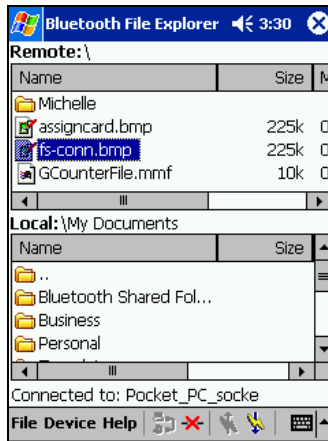


Send/Receive File(s) or Folder(s)

1. Select the file(s) or folder(s) that you wish to transfer. You can only select items from one device per transfer session.

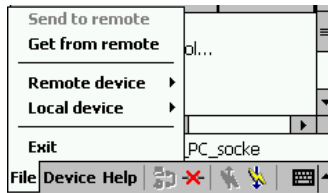
Single-tap items to select them for transfer.

Double-tap on a folder to open it and see its contents.





Note: A copy of the selected item will be transferred, not the original.

2. There are two different ways to initiate the transfer.



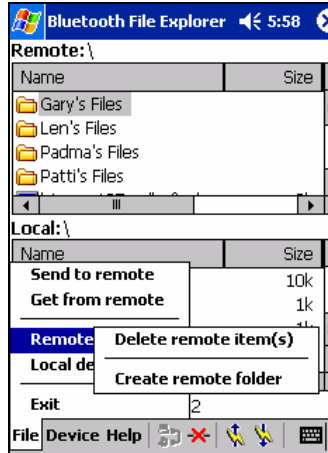
- Tap on the File menu. Select **Send to remote** or **Get from remote**, as applicable. The inappropriate option should be gray.

- Tap on the Send to Remote icon  or Get from Remote icon , as applicable. The inappropriate icon should be gray.

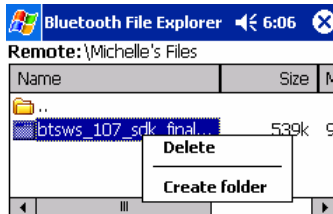
3. A screen will report the status of the transfer.
4. After the transfer, a copy of each selected item should appear in the other device.

Create a Folder

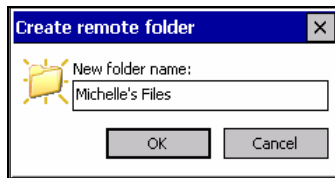
1. Tap on the File menu. Select Remote device or Local device, wherever you want to create a folder, then tap Create remote folder or Create local folder, as applicable.



2. Alternatively, on Pocket PCs, you can tap and hold your stylus on an item in either the remote or local device that you wish to put in a new folder. In the pop-up menu, select Create folder.



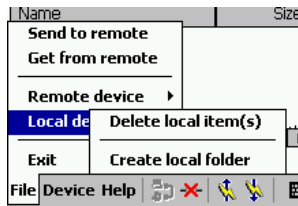
3. In the next screen, enter a name for your new folder. Tap OK.



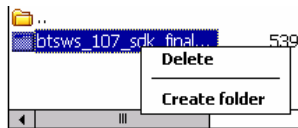
4. The new folder should be listed under the appropriate device.

Delete File(s) or Folder(s)

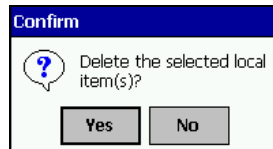
1. Select item(s) that you wish to delete. You can only delete item(s) from one device at a time.
2. Tap on the File menu. Select Remote device or Local device, wherever the item(s) are located, then tap Delete remote item(s) or Delete local item(s), as applicable.



3. Alternatively, on Pocket PCs, you can tap and hold your stylus on an item in either the remote or local device that you wish to put in a new folder. In the pop-up menu, select Delete folder.

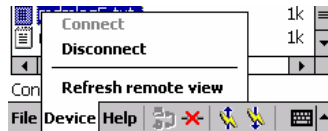


4. In the Confirm screen, tap Yes.



Refresh Remote View

1. Tap on the Device menu. Select Refresh remote view.



2. Your local device will begin to read the contents of the remote device.
3. After a few seconds, the view of the contents of the remote device will be refreshed.

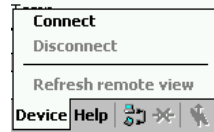
Connect/Disconnect

To ***connect*** to the remote device, do the following:

1. Make sure the remote device has file sharing enabled.
2. Start the connection process by either of two methods:

- Tap on the Device menu. Select Connect.

- Tap on the Connect icon



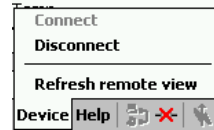
3. In the next screen, select the device you wish to connect to. Tap Select. Your mobile computer will attempt to connect to the device selected.

To ***disconnect*** from the remote device, do the following:

1. Start the disconnection process by either of two methods:

- Tap on the Device menu. Select Disconnect.

- Tap on the Connect icon



2. Your mobile computer will disconnect from the remote device. Afterwards, no contents will be listed for the remote device.

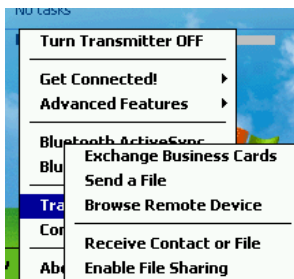
Exit Bluetooth File Explorer

To exit the *Bluetooth* File Explorer, tap File | Exit.

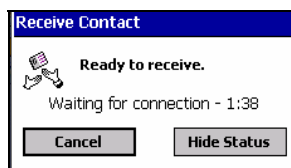


Receive Contact or File

1. Tap on the *Bluetooth* icon. In the pop-up menu, tap Transfer via Bluetooth | Receive Contact or File.



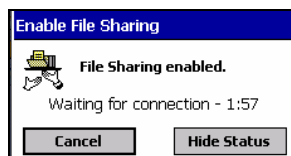
2. The Receive Contact or File status screen will appear. Your mobile computer will wait two minutes for the contact or file.



3. After successfully connecting to the remote device, the screen will report **Connected** then disappear. The new contact or file should now be on your device.
4. If two minutes passes before you receive the item, tap **Wait Again**.
5. After you receive the file or contact, the “Receive Contact or File” feature is automatically disabled.

Enable File Sharing

1. Tap on the *Bluetooth* icon. In the pop-up menu, tap Transfer via Bluetooth | Enable File Sharing.
2. The Enable File Sharing status screen will appear. Your mobile computer will wait two minutes for the remote device to connect.



3. After successfully connecting to the remote device, the screen will report **Connected**.
4. If two minutes passes before you connect, tap **Wait Again**.
5. File sharing will be enabled until you end it by tapping **Cancel**.

6 | Socket Dialer

This chapter explains how to assign a dialing prefix and use the Socket Dialer to dial a number directly from your Contacts list. The Socket Dialer makes it quick and easy to perform dial-up networking.



If you have not done so already, be sure to run the Dialer Installer from the Socket installation CD. While installing the program, you can also assign the dialing prefix.

To install the software: In the Socket Connection Kit Setup Center, on the Installation page, scroll down and click on the **Dialer Installer** link.

Dialer Installer

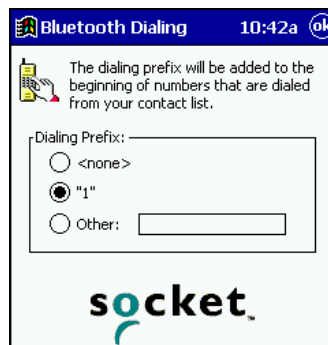
Click [install](#) and follow the same instructions as above to launch the Socket Dialer Setup program. The Dialer automates dialing a number in your contacts database via a Bluetooth Connection.

Note: The Socket Dialer has been verified to work with Nokia and Ericsson phones and is known not to work with the Motorola 270c, NTT Docomo Paldio 633S or Sony au C413S phone. Results may vary with other phones that are not officially supported by the Socket Connection Kit.

Assign a Dialing Prefix

If you have not already assigned a dialing prefix during the install process, you can do so by following these steps:

1. Go to **Start | Settings | System**. Tap on **Socket Dialer**.
2. Select the appropriate **Dialing Prefix**, then tap **ok**.

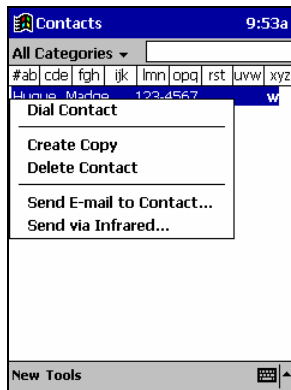


Use the Socket Dialer

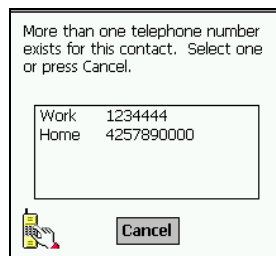
1. To use the dialer, the mobile computer must already be connected to the *Bluetooth* enabled phone. You can use the Get Connected! Wizard to do this. Also, the *Bluetooth* enabled phone must be selected as your favorite.



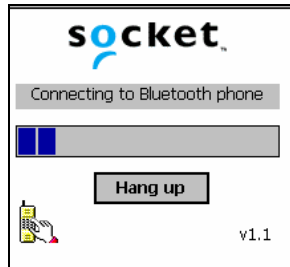
2. Go to **Start | Contacts** or press the appropriate hardware button
3. Tap and hold your stylus on the contact you wish to dial to. In the pop-up menu, select **Dial Contact**. Alternatively, you can tap on **Tools** and select **Dial Contact**.



4. If you have multiple phone numbers for a contact, a screen will appear listing them, including any dialing prefix you may have assigned. Select the phone number you wish to dial.



5. Your mobile computer will connect to your phone and begin dialing.



Note: The Socket Dialer can dial a phone number containing any of the 17 following non-numeric characters:

** # + . / ! @ - \ space A B C D T P W*

Additionally, the following string can be included in a phone number:

(;)

The Socket Dialer can not dial a phone number containing non-numeric characters other than those listed above.

Socket recommends that you follow the standard Microsoft Outlook format for phone numbers.


7 | **Bluetooth Serial Port**

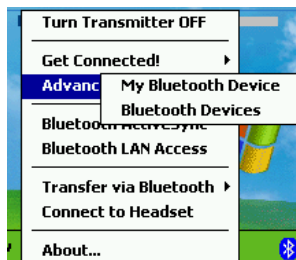
This chapter explains how use the Enhanced CF Connection Kit with *Bluetooth* Wireless Technology for serial cable replacement with a GPS Receiver, Cordless Serial Adapter, or other *Bluetooth* enabled device that supports the *Bluetooth* Serial Port Profile (SPP).

Setup Summary for *Bluetooth* Serial Port

- STEP 1: Enable *Bluetooth* Serial COM Feature.
- STEP 2: Prepare Serial Device for Connectivity.
- STEP 3: Discover the *Bluetooth* Serial Device.
- STEP 4: Bond with the *Bluetooth* Serial Device.
- STEP 5: Configure Application for Correct COM Port.

STEP 1: Enable *Bluetooth* Serial COM Feature

1. After you insert the card, the *Bluetooth* icon will appear in the task bar (visible in the Today screen for Pocket PCs). Tap on the icon. 
2. In the pop-up menu, tap Advanced Features | My Bluetooth Device.



3. The General screen will appear. Tap on the COM Ports tab.



4. Make sure **Bluetooth COM Port** is checked, and note the COM port number assigned to it. You will need to know the correct COM port number to configure any software that you use with the *Bluetooth* serial connection. Tap **ok**.



STEP 2: Prepare *Bluetooth* Serial Device

1. Turn on the *Bluetooth* enabled serial device and set it in Discoverable mode. Refer to your device's documentation for instructions.

If you are connecting to the Socket GPS Receiver with Bluetooth Wireless Technology, simply turn on the GPS receiver, and the device will be Discoverable. The *Bluetooth* Status LED will blink blue to indicate that the Bluetooth radio is on.



If you are connecting to the Socket Cordless Serial Adapter with *Bluetooth* Wireless Technology, use the Cordless Serial Adapter Configuration Utility to correctly prepare the adapter to connect to your mobile computer.

- In the main utility screen, select **Acceptor**. Click on the **Properties** button. Click on the **Connections** tab.
- In the Connections screen, enter the following:
Select **Connectable and Discoverable**.
Uncheck **Only when DTR is asserted by local host**.
Select **Do not generate notifications**.
- Click on the **Port Settings** tab. Make sure all the port settings will match those that you plan to use in your Pocket PC application. Click **OK**.
- In the main utility screen, click on the **Write to adapter** button.
- Now you are ready to attach the adapter to your serial equipment. Turn on the equipment and use the AC adapter to connect the CSA to a power outlet.

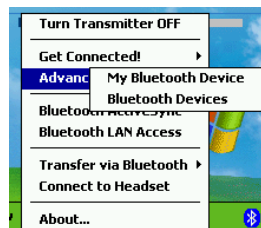



2. If your serial device requires a specific passkey for *Bluetooth* connections, have it ready.

If you are connecting to the Socket Cordless Serial Adapter with *Bluetooth* Wireless Technology, the passkey is **0183**.

STEP 3: Discover *Bluetooth* Serial Device

1. Launch the Bluetooth Devices folder: Tap on the *Bluetooth* icon (in the Today screen for Pocket PCs). Select Advanced Features then Bluetooth Devices.



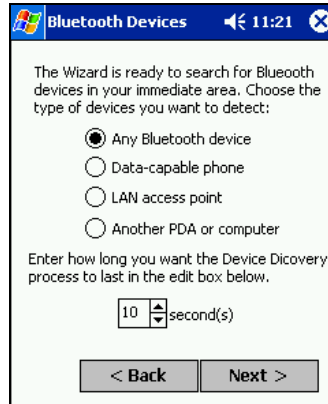
2. In the Bluetooth Devices Folder, tap on the Device Discovery icon . Or you can tap on Tools. In the menu, select Device Discovery.



3. The Bluetooth Device Discovery Wizard will appear. Make sure the *Bluetooth* enabled serial device is set in Discoverable mode. Tap Next>.



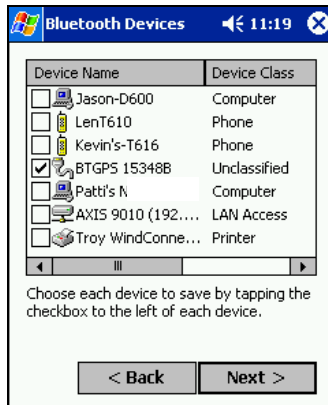
4. In the next screen, make sure **Any Bluetooth device** is selected. Tap **Next>**.



5. Your mobile computer will search for *Bluetooth* enabled devices in range.

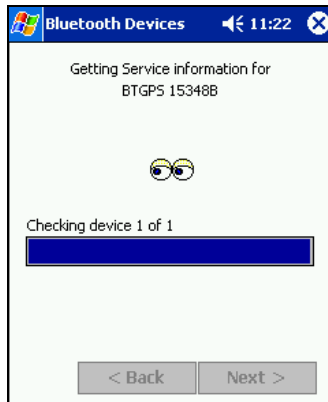


- When the search is complete, a screen will report the discovered devices. Check the box next to the Bluetooth enabled serial device. You can also select any other *Bluetooth* enabled device that you would like to save to your *Bluetooth* Devices folder Tap Next>.

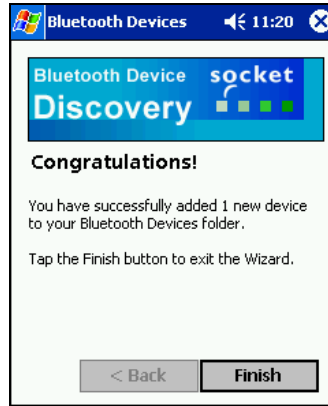


Note: These screens show how to connect to the Socket GPS Receiver with Bluetooth Wireless Technology. The wizard screens will be similar for all devices.

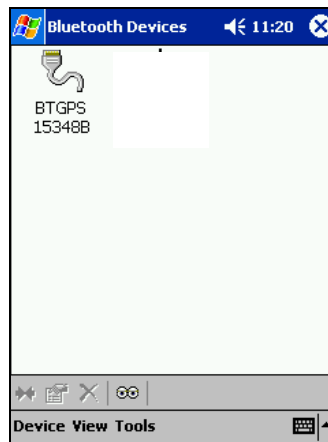
- A service discovery phase will begin, 5-10 seconds per chosen device.



- In the next screen, tap **Finish**.



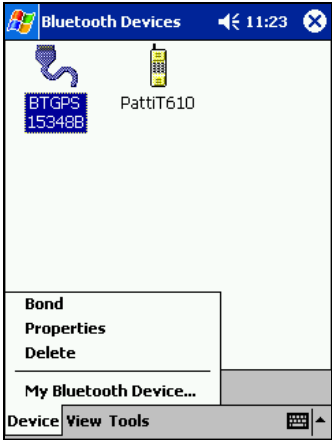
- After you complete the wizard, the serial device will appear in your *Bluetooth Devices* folder.



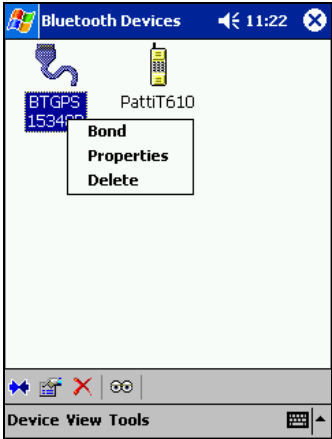
STEP 4: Bond with *Bluetooth* Serial Device

Follow these steps to bond with the serial device that you just discovered and saved to your *Bluetooth* Devices folder.

- 1. In the *Bluetooth* Devices folder, tap to select the serial device, then either tap on Device | Bond, or tap on the Bond icon.



Pocket PC only: Alternatively, tap and hold your stylus on the serial device. In the pop-up menu, select Bond.



2. The Bluetooth Device Bonding Wizard will launch. Follow the wizard to bond with your serial device.



3. As prompted, make sure the serial device is in Bondable mode.

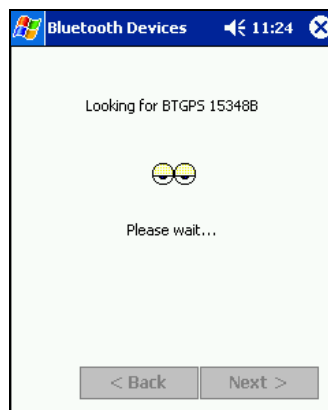


4. If the remote device is set up to accept bonding, a **Bluetooth Passkey** screen will appear. To continue bonding, enter the correct passkey and tap **Reply**.

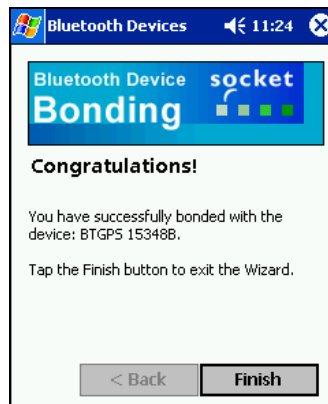


If you are bonding with the Socket GPS Receiver, enter the passkey 0183.

5. The mobile computer will submit the passkey to the serial device.



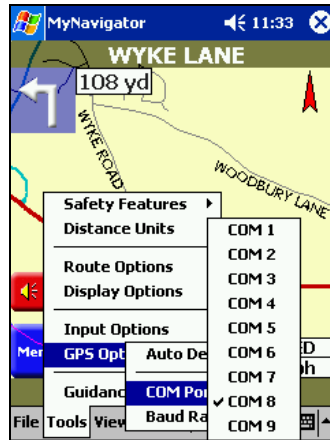
6. When you have successfully bonded with the other device, tap **Finish**.



STEP 5: Configure Application for Connection

Make sure to configure your *Bluetooth* serial application for the correct COM port, baud rate, and other settings.

1. Make sure your application is set to use the same COM port that is assigned to the *Bluetooth* serial connection.



If you are using the Socket GPS Nav Kit, set the GPS receiver as your favorite serial device in your *Bluetooth* Devices folder. Afterwards, the MyNavigator software will automatically detect and use the correct COM port.

2. Make sure the baud rate and any other port settings match those of both *Bluetooth* devices.

8 | **Bluetooth Faxing and Printing**

This chapter explains how use the Enhanced CF Connection Kit with *Bluetooth* Wireless Technology for wireless faxing and printing.

Bluetooth Faxing

Many *Bluetooth* enabled phones and other types of *Bluetooth* enabled devices support faxing. This chapter explains how to use such a device with the Socket card and your mobile computer for wireless faxing.

Note: The Enhanced CF Connection Kit does not include faxing software. You must obtain faxing software customized for Bluetooth wireless technology separately from a third party.

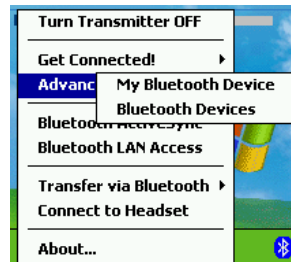
1. If using a *Bluetooth* enabled phone, use the Get Connected! Wizard to connect to the phone. If using another type of *Bluetooth* enabled device, use the Device Discovery Wizard to connect it to your mobile computer.
2. Make sure your *Bluetooth* enabled device supports faxing.
 - In the *Bluetooth* Devices folder, select the device.
 - View the device's properties by either tapping on the properties icon or tapping Device | Properties. On a Pocket PC, you can also tap and hold your stylus on the device. In the pop-up menu, select Properties.



- Tap on the Services tab. Make sure Fax is listed. Tap ok.



3. Make sure a COM port is enabled for faxing.
 - Tap on the *Bluetooth* icon. Select **Advanced Features**, then **My Bluetooth Device**.



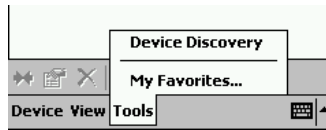
- Tap on the COM Ports tab. In the COM Ports screen, make sure Bluetooth Fax is checked.



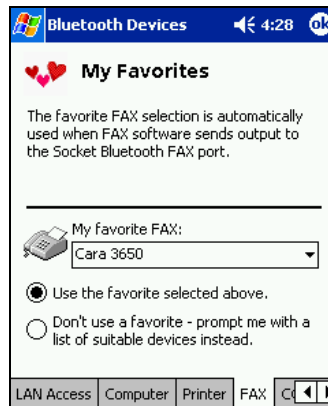
- Note the COM port number assigned to faxing. You may need this to configure your fax software. Tap ok.

4. Assign your *Bluetooth* enabled device as your favorite fax.

- In the *Bluetooth* Devices folder, tap **Tools | My Favorites**.

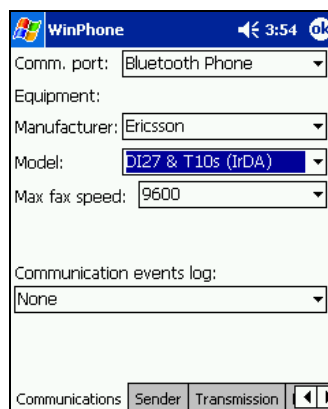


- Tap on the **FAX** tab.



- Select **Use the favorite selected above**, then select the device from the drop-down menu. Tap **ok**.

5. Now you are ready to use your fax software. While configuring the fax connection, select either **Bluetooth FAX** or the COM port assigned to *Bluetooth* faxing.



Bluetooth Printing

You can print using the PrintPocketCE program included on the installation CD. The Socket Connection Kit includes a 30-day trial version of PrintPocketCE. For a full version, please visit: www.fieldsoftware.com

If you have not done so already, be sure to install the PrintPocketCE program. To find the install for this program on the installation CD, go to the Third Party folder, then the Field Software folder.

1. Start the printing program. Go to **Start | Programs | PrintPocketCE**.

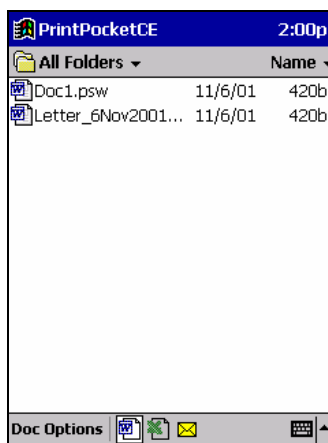


PrintPocke...

2. In the welcome screen, read the instructions and tap **OK**.



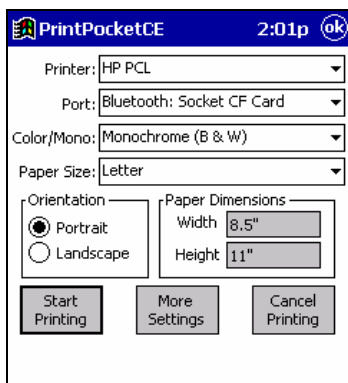
3. In the main screen, tap on the file you wish to print.



To locate your file:

- Tap on the Word icon at the bottom of the screen to view a list of Pocket Word docs, TXT, or RTF files.
- Tap on the Excel icon to view a list of Pocket Excel files.

- Tap on the yellow envelope icon to view email messages.
 - Tap on the Doc/Excel/Email Options menu and select another type of printing (e.g., Go to email printing).
 - Use the folders drop-down menu to switch between folders.
4. The next screens let you adjust the printer settings. Make sure the correct printer is chosen. For Port, choose **Bluetooth: Socket CF Card** or **Bluetooth: Socket SDIO Card**. Make any other necessary printer settings.

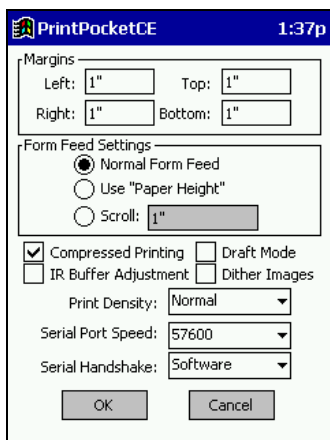


Note:

*For a Pocket Excel file, the first screen lets you adjust printing properties. Tap **Continue** to select the correct printer and port.*

*Instead of **Bluetooth: Socket CF Card** or **Bluetooth: Socket SDIO Card**, you can choose the **COM** port assigned to your Bluetooth printer.*

5. If needed, tap on **More Settings** to adjust margins, form feed, and other settings. Tap **OK** to return to the main printing screen.



6. When done adjusting the settings, tap **Start Printing**.

7. The mobile computer will search for a *Bluetooth* enabled printer. After the search, a list of discovered printers will appear. Select the correct *Bluetooth* enabled printer, then tap **Select**.



If the mobile computer fails to detect the *Bluetooth* enabled printer, make sure the printer is on, discoverable, and in range. Tap **Find** to repeat the search.

8. The document will begin printing.
9. To exit the program, tap **Doc Options**. In the pop-up menu, tap **Exit**.

9 | My Device Manager

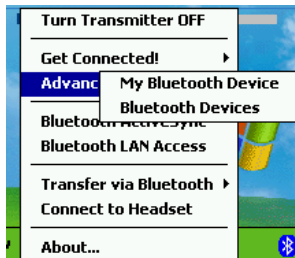
The Device Manager allows you to configure settings for your Socket Card, including:

- Friendly Name
- Discoverable, connectable, and connection security settings
- Enable/disable COM ports
- Assign business card and folder for object sharing
- Headset audio settings

Note: The Object Sharing tab will appear only if you installed the optional OBEX software.

Accessing the Device Manager

1. After you insert the card, the *Bluetooth* icon should appear in the task bar (in the *Today* screen for Pocket PCs). Tap on the icon.
2. In the pop-up menu, select **Advanced Features**, then **My Bluetooth Device**.



Note: Transfer via Bluetooth will appear only if you installed Socket OBEX.

General Device Settings

Note: If you use either of the Get Connected! Wizards, which are recommended for normal usage with phones or headsets, then this step is not necessary. This step would be used to change the friendly name of your mobile computer.

1. In the My Bluetooth Device screen, you can modify the Friendly Name as well as connection settings.



Discoverable: Check this box to allow other *Bluetooth* enabled devices in range to discover your mobile computer.

- If you want to initiate a connection from your mobile computer, you do not need to enable this feature. You do not need to enable this for most dial-up networking or printing applications.
- If you want to accept a connection from another *Bluetooth* enabled device, your mobile computer must be discoverable. For example, check this box if you want to connect to a Socket Cordless Serial Adapter that has been configured for Initiator mode.
- Please note that if you enable Discoverable mode, it does not shut off by itself. To conserve power, manually disable this feature when not in use.

Connectable: Check this box to allow other *Bluetooth* enabled devices in range to connect with your mobile computer.

- If you want to initiate a connection from your mobile computer, you do not need to enable this feature. You do not need to enable this for most dial-up networking or printing applications.
- If you want to accept a connection from another Bluetooth enabled device, your mobile computer must be Connectable.

Use Authentication: Check this box if you want to require a passkey to connect with another Bluetooth enabled device. If either or both devices use authentication, you must enter a passkey to connect.

Use Encryption: Check this box to connect to *Bluetooth* enabled LAN access points that use WEP encryption.

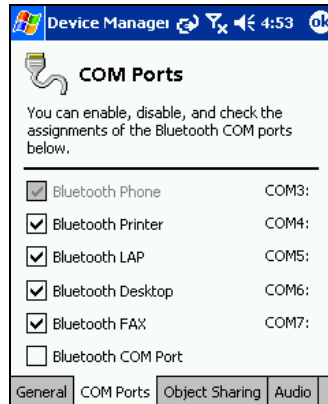
Important!

After you finish configuring all of your settings, tap ok to exit the Device Manager and make the settings take effect!

Assign COM Ports

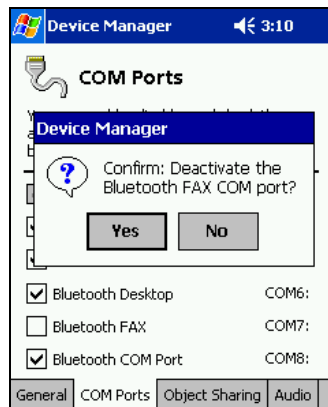
Follow these steps to view and/or modify the *Bluetooth* COM ports.

1. Tap on the COM Ports tab. As needed, view and/or enable/disable the *Bluetooth* COM port assignments.



Note: The Bluetooth Phone port cannot be disabled.

2. To disable a COM port, uncheck a box. In the confirmation screen, click Yes.



Important!

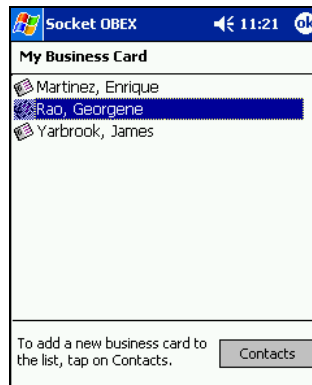
After you finish configuring all of your settings, tap ok to exit the Device Manager and make the settings take effect!

Configure Object Sharing

1. Tap on the Object Sharing tab.



2. To assign a business card or folder for others to remotely access, tap on the appropriate Assign... button. After selecting the contact or folder, tap ok.



Important!

After you finish configuring all of your settings, tap ok to exit the Device Manager and make the settings take effect!

Configure Audio Features

Follow these steps to prepare your mobile computer to connect to a *Bluetooth* enabled headset.

1. Tap on the **Audio** tab.



2. If you plan to connect to a headset, select **Enable headset features**.
3. If you have a Pocket PC Phone edition, you can select **Automatically connect to headset** to have your device automatically connect to your favorite headset in the *Bluetooth* Devices folder whenever you initiate or receive a call.

Important!

After you finish configuring all of your settings, tap ok to exit the Device Manager and make the settings take effect!

10 | **Bluetooth Devices Folder**

This chapter explains optional steps you may choose to perform while using the Socket Connection Kit with *Bluetooth* Wireless Technology.

The steps covered in this chapter include:

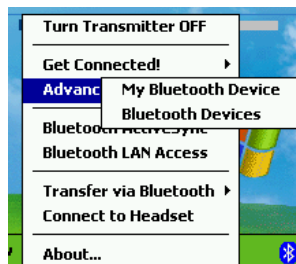
- Using the *Bluetooth* Device Discovery Wizard
- Using the *Bluetooth* Device Bonding Wizard
- Viewing device properties
- Setting up a Favorite Device
- Changing views
- Deleting an item from the *Bluetooth* Devices folder

Accessing the Bluetooth Devices Folder

1. To launch the *Bluetooth* Devices folder, tap on the *Bluetooth* icon (in the Today screen for Pocket PCs).



2. In the pop-up menu, select **Advanced Features** then **Bluetooth Devices**.



Discover *Bluetooth* Device(s)

You can use the Device Discovery wizard to search for *Bluetooth* enabled devices in range, then save them to your *Bluetooth* Devices folder for future connections.

You can use the wizard to search for any type of *Bluetooth* enabled device, or, if desired, you can search for only a particular type of device. Use the Device Discovery Wizard to search for GPS receivers, joysticks, printers, keyboards, and other types of *Bluetooth* enabled devices.

For phones, headsets, computers, and LAN Access Points, the Device Discovery Wizard is a more detailed alternative to using the Get Connected! Wizard, *Bluetooth* ActiveSync or *Bluetooth* LAN Access feature.

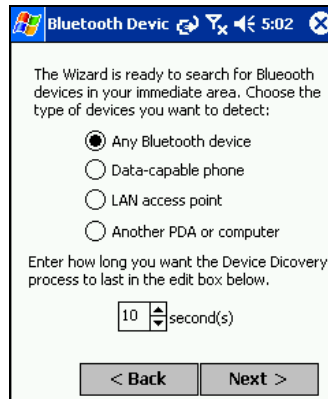
1. To launch the Device Discovery Wizard, in the *Bluetooth* Devices folder, tap on the Device Discovery icon. Or you can tap on **Tools**. In the menu, select **Device Discovery**.



- The *Bluetooth* Device Discovery Wizard will begin. As directed, make sure the device(s) you want to search for are set in Discoverable mode. Tap Next>.



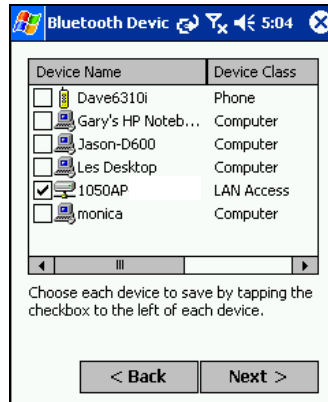
- Select the type of device that you want to discover. Tap Next>.



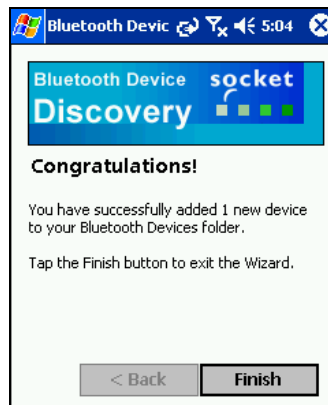
- Your mobile computer will search for *Bluetooth* enabled devices in range.



- When the search is complete, a screen will report the discovered devices. Check the box next to any device you wish to save to your *Bluetooth* Devices folder, (i.e., any devices you wish to connect to). Tap **Next**>.



- A service discovery phase will begin, 5-10 seconds per chosen device.
- In the next screen, tap **Finish**.



- After you complete the wizard, the device will appear in your *Bluetooth* Devices folder.

Bond with Discovered Device(s)

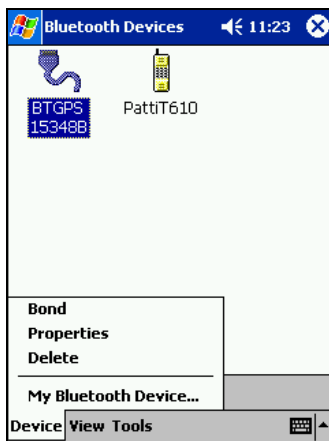
You can use the Device Bonding wizard to bond with devices that you have already discovered and saved to your *Bluetooth* Devices folder. You can use the wizard to bond with almost any type of *Bluetooth* enabled device.

For phones, headsets, computers, and LAN Access Points, the Device Bonding Wizard is a more detailed alternative to using the Get Connected! Wizard, *Bluetooth* ActiveSync or *Bluetooth* LAN Access feature.

Important!

- *If your device requires authentication, you may not be able to bond with it through this wizard. Devices requiring authentication include:*
 - *Motorola Timeport 270C*
 - *Most Nokia phones*
- *Do not use this method to bond with a printer! The third-party printing software included on the installation CD also handles bonding.*

1. In the *Bluetooth* Devices folder, tap on the device you wish to bond with. Then tap on **Device** and select **Bond**, or tap on the **Bond** icon .



Pocket PCs only: Alternatively, tap and hold your stylus on the device. In the pop-up menu, select **Bond**.

2. The Device Bonding Wizard will launch. Follow the wizard to bond with your selected device.



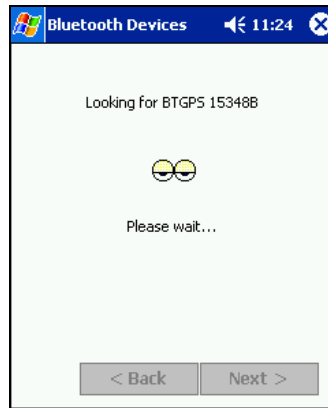
3. As prompted, make sure the *Bluetooth* enabled device that you want to bond with is in Bondable mode.



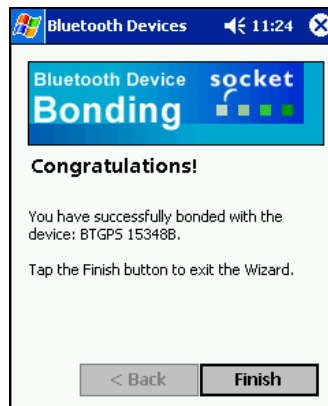
4. If the remote device is set up to accept bonding, a **Bluetooth Passkey** screen will appear. To continue bonding, enter the correct passkey and tap Reply.



3. Your mobile computer will submit the passkey to the other *Bluetooth* enabled device.



4. When you have successfully bonded with the other device, tap **Finish**.



View Device Properties

Follow these steps to view the properties of a device that you have already discovered and saved to the *Bluetooth* Devices folder.

1. In the *Bluetooth* Devices folder, select a device, then tap Device | Properties, or tap on the Properties icon.



Pocket PCs —

Alternatively, you can tap and hold your stylus on the device you want to view information about. In the pop-up menu, select **Properties**.



2. Use the **General** screen to view the device properties. If desired, you can modify the **Device name** and the icon used to indicate the device type.

To assign a new icon, tap on the arrow buttons.



3. Tap on the **Services** tab and scroll down the list to see which *Bluetooth* services the device offers. If the *Services* appear as **Unknown**, tap **Update** to search again for the device's *Bluetooth* services.



Important!

When you have finished configuring any properties, click ok to exit the Properties screen and have the settings take effect.

Set up Your Favorite Device

Follow these steps to set up default devices in the **Bluetooth Devices** folder. Whenever your mobile computer is configured for automatic connections, it will try to connect to your favorite device of a particular type.

Note: The Get Connected! Wizards automatically assign the favorite phone and headset.

1. Tap on **Tools** and select **My Favorites...**



2. Tap on the tab for the type of device you would like to set a favorite for. If needed, use the arrow buttons to scroll and find the tab you need.



Note: Tabs will appear only for COM ports you have enabled. To enable a port, refer to the "Assign COM Ports" section earlier in this chapter.


3. To select a favorite device, select **Use the favorite selected above.** In the drop-down menu, select your device. Tap **ok**.

4. After setting a device as your favorite, its icon will appear in the *Bluetooth Devices* folder with a heart next to it.



What if I can't connect to a device in the Bluetooth Devices folder, or I can't select it as my favorite?

You can connect to a device only if its services have been successfully discovered. Follow these steps to perform a service discovery:

With the device selected in the folder, tap on Properties  then select the Services tab. Tap the Update button.

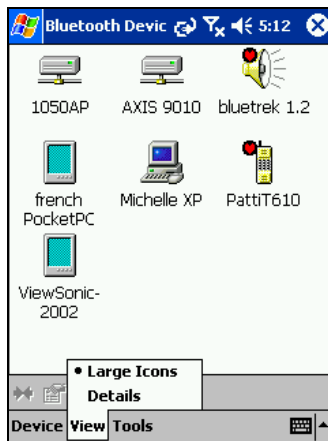


Please report any devices that you have problems discovering services for. Email askbluetooth@socketcom.com

Change Views

You can switch between the Large Icons or Details views for the Bluetooth Devices folder.

1. In Bluetooth Devices, tap on View.
2. In the pop-up menu, choose between Large Icons or Details.



Large Icons view



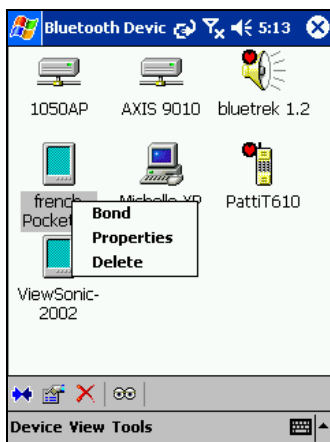
Details view


Note: In Details view, scroll right to see the current Bonded status.

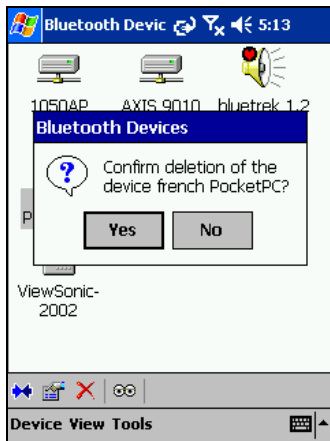
Delete a Device from the Folder

If you no longer plan to connect with a device, you can delete it from the *Bluetooth Devices* folder.

1. *Pocket PCs only*: Tap and hold your stylus on the device you wish to delete. In the pop-up menu, select Delete.



2. Alternatively, after selecting a device, tap on the Delete icon . Or tap on Device then select Delete.
3. A Confirm screen will appear. Tap Yes.



Appendix A Specifications

CompactFlash Card

Physical Characteristics:

Dimensions: 36.4 x 42.8 x 3.3 mm

Mass: 10 g

Antenna: integrated

Power Consumption (3.3 V Supply):

Idle: 16 mA **Typical:** 40 mA **Maximum:** 90 mA

Interface Standards:

CompactFlash Interface: CompactFlash I/O, Type I

With CompactFlash-to-PC Card Adapter: PCMCIA, Type II

Serial Communications: TTL

Software Compatibility: Windows COM port

Hardware Compatibility:

Standard Card (without PC Card adapter):

Windows Mobile for Pocket PC 2003/2003SE/5.0 with CompactFlash I/O slot

With CompactFlash-to-PC Card adapter:

Windows Mobile for Pocket PC 2003/2003SE/5.0 and Windows 2K/XP with PC Card slot.

Software Included: Socket Connection Kit Installation CD

Compatible Applications: PrintPocketCE

Warranty: CompactFlash Card: Three years

Certification:

FCC: Part 15, Section 15.247

Industry Canada: RSS 210

Bluetooth 2.0+EDR

ETS EN300 328-2

ETS EN301 489-1

ETS EN301 489-17

TELEC 01NYDA1342

CompactFlash Spec. 2.0

Appendix B Safety and Usage Tips

About *Bluetooth* and Health

Bluetooth wireless technology allows you to use short-range radio signals to connect a variety of devices, such as mobile phones, Pocket PCs, notebook computers, printers, LAN access points, and many other devices at home or work. These radio signals replace the cables that have traditionally connected these devices.

Bluetooth enabled products have small radio transmitters and receivers. Output power is normally very low, only 1 mW (1/1000 of a watt). This gives a working range of approximately 10 meters.

The maximum exposure levels from *Bluetooth* enabled products are far below recommended safety guidelines. At most, typical *Bluetooth* enabled devices (1mW) reach only one percent of the prescribed safety levels.

CompactFlash Card

Product Care

- Do not expose your product to liquid, moisture or extreme humidity.
- Do not expose your product to extreme high or low temperatures.
- Do not expose your product to lit candles, cigarettes, or cigars, or to open flames, etc.
- Do not drop, throw or try to bend the product, as rough treatment could damage it.
- Do not paint your product, as the paint could obstruct parts and prevent normal use.
- Do not attempt to disassemble your product: a broken warranty seal will void the warranty. The product does not contain consumer serviceable components. Should your Socket card need service, please contact Socket technical support at: support@socketcom.com.
- Treat your product with care. Keep in a clean and dust-free place.
- Changes or modifications of this product, not expressly approved by Socket, may void the user's authority to operate the equipment.

Antenna Care

Do not place a metallic shield around your Socket card since it will reduce the radio transmission efficiency.

Efficient Use

For optimum performance, please make sure that there is no metal surrounding your Socket card.

Driving

RF energy may affect some electronic systems in motor vehicles, such as car stereo, safety equipment, etc. Check with your vehicle manufacturer's representative to be sure that your Enhanced Cordless Card will not affect the electronic system in your vehicle.

Aircraft

- Turn off your card antenna before boarding any aircraft.
- To prevent interference with communications systems, you must not use your Enhanced Cordless Card while the plane is in the air.
- Do not use it on the ground without permission from the crew.

Radio Frequency Exposure

Your Enhanced Cordless Card is a radio transmitter and receiver. When in operation, it communicates with a *Bluetooth* equipped mobile phone, mobile computer or other device by receiving and transmitting radio frequency (RF) magnetic fields in the frequency range 2400 to 2500 MHz. The output power of the radio transmitter is 0.001 Watt.

The Enhanced Cordless Card is designed to be in compliance with the RF exposure limits set by national authorities and international health agencies¹ when installed or used separately from other antennas or radio transmitters.

¹ Examples of RF exposure standards and guidelines:

ICNIRP, "Guidelines for limiting exposure to time-varying electric, magnetic, and electromagnetic fields (up to 300 GHz)", International Commission on Non-Ionizing Radiation Protection (ICNIRP), Health Physics, vol. 74, pp 494-533, April 1998.

99/519/EC, EU Council Recommendation on the limitation of exposure to the general public to electromagnetic fields 0 Hz – 300 GHz, Official Journal of the European Communities, July 12, 1999.

ANSI/IEEE C95.1-1992, "Safety levels with respect to human exposure to radio frequency electromagnetic fields, 3 kHz to 300 GHz", The Institute of Electrical and Electronics Engineers, Inc., New York, 1991.

FCC Report and Order, ET Docket 93-62, FCC 96-326, Federal Communications Commission (FCC), August 1996.

Radiocommunications (Electromagnetic Radiation Human Exposure) Standard 1999, Australian Communications Authority (ACA), May 1999.

Appendix C Troubleshooting

SYMPTOM:

I cannot connect to a device in my folder.

POSSIBLE REASONS	SOLUTION
The services for the devices have not been discovered.	In the Bluetooth Devices folder, tap on the Properties icon. Tap on the Services tab. In the Services screen, tap on the Update button.

SYMPTOM:

When I use the Get Connected! Wizard to connect to my phone, I get a screen that says *Partial Success*.

POSSIBLE REASONS	SOLUTION
The phone is not in Bondable mode.	Set your phone to Bondable mode. If needed, consult your phone's documentation for help.
The passkey is incorrect.	Make sure the same passkey is entered on the phone and your mobile computer. If using a pre-assigned passkey for the phone, verify that your passkey is accurate.

SYMPTOM:

When I insert the Socket card, I get a message that says *Unrecognized Card*.

POSSIBLE REASONS	SOLUTION
You did not install the software for the Connection Kit yet.	Remove the card and install the software.

SYMPTOM:

My mobile computer cannot find any *Bluetooth* enabled devices nearby.

POSSIBLE REASONS	SOLUTION
You are too far from other <i>Bluetooth</i> enabled devices.	Move closer to the other <i>Bluetooth</i> enabled device(s), within a range of 10 meters.
The <i>Bluetooth</i> enabled device(s) nearby are not turned on.	Turn on the <i>Bluetooth</i> enabled device(s) you wish to find.
The <i>Bluetooth</i> enabled device(s) are not in discoverable mode.	Set the <i>Bluetooth</i> enabled device(s) to discoverable mode. If needed, consult the device's documentation for help.

SYMPTOM:

My mobile computer keeps powering down to protect memory contents.

POSSIBLE REASONS	SOLUTION
Your mobile computer's battery is low.	Recharge the battery.
The Socket card has been in Discoverable mode for a long time. This mode requires a lot of battery power and should be turned off whenever not needed.	Tap on the <i>Bluetooth</i> icon, then select My Bluetooth Device . Uncheck Discoverable .

SYMPTOM:

When I try to connect my *Bluetooth* enabled phone and mobile computer, the phone thinks that I am using a different mobile computer that I previously paired with the phone.

POSSIBLE REASONS	SOLUTION
The phone remembers the name and address of the mobile computer it last paired with via your Socket card.	Manually delete the pairing device and name from your phone. Refer to your phone's user documentation for instructions.

SYMPTOM:

I can't make my Ericsson R520 phone discoverable.

POSSIBLE REASONS	SOLUTION
You attempted to bond with the phone, and when the phone presented a "pairing query," you entered No. This prevents the phone from being discoverable until it is reset.	Reset the phone by removing its battery.

Appendix D Technical Support

Socket On-Demand Support (SOS)

Socket On-Demand Support (SOS) is a virtual technical support assistant that focuses in on your specific question to provide the specific answers you need. SOS provides the quickest turnaround time and is the best place to start for technical support.



To access SOS, visit: www.socketcom.com/support and click on the SOS icon.

If SOS cannot answer your inquiry, you can submit your question to a technical support engineer after the session. Your interaction session will be saved for reference to better serve you.

Note: To help expedite live technical support, you will be asked to register your product and provide some information about your system configuration and environment.

Live Technical Support

IMPORTANT! To obtain technical support for your product, you must first register your product online at www.socketcom.com/prodreg.

After product registration, log in and click on the Technical Support tab. Click on **New Trouble Ticket** to submit an online request. If we are unable to resolve your support inquiry via email, we can arrange for a technical support engineer to call you at a specific time. You can log in anytime to check the status of your request.

Please refrain from disassembling the CompactFlash or SDIO card. Disassembly of this device will void the product warranty.

Limited Warranty

Socket Communications Incorporated (Socket) warrants this product against defects in material and workmanship, under normal use and service, for the following period from the date of purchase:

Plug-in card: Three years

Incompatibility is not a defect covered by Socket's warranty. During the warranty period, Socket will, at its option, repair or replace the defective product at no charge when furnished with proof of retail purchase, provided that you deliver the product to Socket or to an authorized Socket Service Center.

The returned product must be accompanied by a return material authorization (RMA) number issued by Socket or by Socket's Authorized Service Center. If you ship the product, you must use the original container or equivalent and you must pay the shipping charges to Socket. Socket will pay shipping charges back to any location in the contiguous United States. This warranty applies only to the original retail purchaser and is not transferable.

Socket may, at its option, replace or repair the product with new or reconditioned parts and the returned product becomes Socket's property. Socket warrants the repaired or replaced products to be free from defects in material or workmanship for ninety (90) days after the return shipping date, or for the duration of the original warranty period, whichever is greater.

This warranty does not cover the replacement of products damaged by abuse, accident, misuse or misapplication, nor as a result of service or modification other than by Socket.

SOCKET IS NOT RESPONSIBLE FOR INCIDENTAL OR CONSEQUENTIAL DAMAGES RESULTING FROM BREACH OF ANY EXPRESS OR IMPLIED WARRANTY, INCLUDING DAMAGE TO PROPERTY AND, TO THE EXTENT PERMITTED BY LAW, DAMAGES FOR PERSONAL INJURY. THIS WARRANTY IS IN LIEU OF ALL OTHER WARRANTIES INCLUDING IMPLIED WARRANTIES OF MERCHANTABILITY AND FITNESS FOR A PARTICULAR PURPOSE.

Some states do not allow limitation of implied warranties, or the exclusion or limitation of incidental or consequential damages, so that the above limitations or exclusions may not apply to you. This warranty gives you specific legal rights and you may also have other rights which vary from state to state.

This product may contain fully tested, recycled parts, warranted as if new.

For warranty information, phone (510) 744-2700.

Limited Software Warranty

LIMITED WARRANTY. SOCKET warrants that the original disk or CD ROM is free from defects for 90 days from the date of delivery of the SOFTWARE.

CUSTOMER REMEDIES. SOCKET'S entire liability and your exclusive remedy shall be, at SOCKET'S option, either (a) return of the price paid or (b) replacement of the SOFTWARE which does not meet SOCKET'S Limited Warranty and which is returned to SOCKET with a copy of your receipt. Any replacement SOFTWARE will be warranted for the remainder of the original warranty period or 30 days, whichever is longer. THESE REMEDIES ARE NOT AVAILABLE OUTSIDE OF THE UNITED STATES OF AMERICA.

NO OTHER WARRANTIES. SOCKET disclaims all other warranties, either express or implied, including but not limited to implied warranties of merchantability and fitness for a particular purpose, with respect to the SOFTWARE and the accompanying written materials. This limited warranty gives you specific legal rights. You may have others which vary from state to state.

NO LIABILITY FOR CONSEQUENTIAL DAMAGES. In no event shall SOCKET or its suppliers be liable for any damages whatsoever (including, without limitation, damages for loss of business profits, business interruption, loss of business information, or other pecuniary loss) arising out of the use of or inability to use the SOFTWARE, even if SOCKET has been advised of the possibility of such damages. Because some states do not allow the exclusion or limitation of liability for consequential or incidental damages, the above limitation may not apply to you.

EXPORT LAW ASSURANCES. You may not use or otherwise export or reexport the SOFTWARE except as authorized by United States law and laws of the jurisdiction in which the SOFTWARE was obtained. In particular, but without limitation, none of the SOFTWARE may be used or otherwise exported or reexported (a) into (or to a national or resident of) a United States embargoed country or (b) to anyone on the U.S. Treasury Department's list of Specially Designated Nationals or the U.S. Department of Commerce's Table of Denial Orders. By using the SOFTWARE, you represent and warrant that you are not located in, under control of, or a national or resident of any such country or on any such list.

GOVERNMENT END USERS. If the SOFTWARE is supplied to the U. S. Government, the SOFTWARE is classified as "restricted computer software" as defined in clause 52.227-19 of the FAR. The U. S. Government's rights to the SOFTWARE are as provided in clause 52.227-19 of the FAR.

CONTROLLING LAW AND SEVERABILITY. This License shall be governed by the laws of the United States and the State of California. If for any reason a court of competent jurisdiction finds any provision, or portion thereof, to be unenforceable, the remainder of this License shall continue in full force and effect.

Regulatory Compliance

CompactFlash Card

The Enhanced CF Connection Kit with *Bluetooth* Wireless Technology is designed to be compliant with the rules and regulations in locations where they are sold and will be labeled as required. This product is type approved — users are not required to obtain license or authorization before using.

Radio Frequency Interference Requirements

This device complies with part 15 of the FCC rules and Industry Canada RSS 210. Operation is subject to the following conditions: (1) This device may not cause harmful interference, and (2) this device must accept any interference received, including interference that may cause undesired operation.

This equipment is also ETS EN300 328-2, ETS EN301 489-1 and ETS EN301 489-17 compliant. These limits are designed to provide reasonable protection against harmful interference when the equipment is operated in a commercial environment.

This equipment generates, uses, and can radiate radio frequency energy and, if not installed and used in accordance with the instruction manual, may cause harmful interference to radio communications. Operation of this equipment in a residential area is likely to cause harmful interference, in which case the user will be required to correct the interference at his or her own expense.

This equipment generates and radiates radio-frequency energy. To comply with FCC RF exposure compliance requirements, the following antenna installation and device operating configurations must be satisfied: (1) Users are not permitted to make changes or modify the system in any way, and (2) connecting external antennas to the card is prohibited. This device and its antenna must not be co-located or operated with any other antenna or transmitter.

To comply with Industry Canada RF exposure compliance requirements, the following antenna installation and device operating configurations must be satisfied: “The installer of this radio equipment must ensure that the antenna is located or pointed such that it does not emit RF field in excess of Health Canada limits for the general population; consult Safety Code 6, obtainable from Health Canada’s website www.hc-sc.gc.ca/ehp/ehd/catalogue/rpb.htm”

If this equipment does cause harmful interference to radio or television reception, which can be determined by turning the equipment off and on, the user may try to correct the interference by one or more of the following measures:

- Reorient or relocate the receiving antenna of the radio or television.
- Increase the distance separating the equipment and the receiver.
- Connect the equipment to an outlet on a different branch circuit than that of the receiver.
- Consult the dealer or an experienced radio/TV technician for help.

The user may find the following booklet helpful: *How to Identify and Resolve Radio-TV Interference Problems*. This booklet is available from the U.S. Government Printing Office, Washington, D.C. 20402.

Canada Certification

The marking of “IC:xxxxxx-yyyyy” on the card means: “xxxxxx-yyyyy” is the certification number, and the term “IC” before the equipment certification number only signifies that Industry Canada technical specifications were met.

Radio Frequency Interference Requirements – Canada

This Class B digital apparatus meets the requirements of the Canadian Interference-Causing Equipment Regulations. Cet appareil numérique de la Classe B respecte toutes les exigences du Règlement sur le Matériel Brouilleur du Canada.

NOTE: To comply with FCC and Industry Canada exposure requirements, The antenna used for this transmitter must not be co-located or operating in conjunction with any other antenna or transmitter. End-users and installers must be provided with installation instructions and transmitter operating conditions for satisfying RF exposure compliance

CE Marking & European Union Compliance

Products intended for sale within the European Union are marked with a CEMark which indicates compliance to applicable Directives and European Normes (EN), as follows. Amendments to these Directives or ENs are included: Normes (EN), as follows:

Applicable Directives:

- Radio and Telecommunications Terminal Equipment Directive
1999/5/EC
- Low Voltage Directive 73/23/EEC

Applicable Standards:

- EN 55 022 – Limits and Methods of Measurement of Radio Interference Characteristics of Information Technology Equipment.

- EN 50 082-1 – Electromagnetic Compatibility – General Immunity Standard, Part 1: Residential, Commercial, Light Industry.
- IEC 801.2 – Electromagnetic Compatibility for Industrial Process Measurement and Control Equipment, Part 2: Electrostatic Discharge Requirements.
- IEC 801.3 – Electromagnetic Compatibility for Industrial Process Measurement and Control Equipment, Part 3: Radiated Electromagnetic Field Requirements.
- IEC 801.4 - Electromagnetic Compatibility for Industrial Process Measurement and Control Equipment, Part 4: Electrical Fast Transients Requirements.
- EN 60 950 + Amd 1 + Amd 2 – Safety of Information Technology Equipment Including Business Equipment.

Product Disposal

Your device should not be placed in municipal waste. Please check local regulations for disposal of electronic products.



