

Scanning Companion

USB *Bluetooth*[®] Adapter

(Part no. 8520-00023)

Plug-in adapter for connecting Windows XP computers to the Cordless Hand Scanner (CHS) Series 7 or Cordless Ring Scanner (CRS) Series 9

User's Guide



COPYRIGHT NOTICE

Copyright © 2007 Socket Communications, Inc. dba Socket Mobile, Inc. All rights reserved.

Socket, the Socket logo, Battery Friendly, SocketScan, Cordless Hand Scanner, Cordless Ring Scanner, Connect!Agent and SocketScan are registered trademarks or trademarks of Socket Communications, Inc. dba Socket Mobile, Inc. *Bluetooth* and the *Bluetooth* logos are registered trademarks owned by *Bluetooth* SIG, Inc., U.S.A. and licensed to Socket Mobile, Inc. All other brand and product names are trademarks of their respective holders.

Reproduction of the contents of this manual without the permission of Socket Mobile is expressly prohibited. Please be aware that the products described in this manual may change without notice.

Feel free to contact Socket Mobile at:

Socket Mobile, Inc.
39700 Eureka Drive
Newark, CA 94560-4808
USA

Other than the above, Socket Mobile can assume no responsibility for anything resulting from the application of information contained in this manual.

Please refrain from any applications of Scanning Companion that are not described in this manual. Please refrain from disassembling the adapter. Disassembly of this device will void the product warranty.

You can track new product releases, software updates and technical bulletins by visiting the Socket Mobile website at:

www.socketmobile.com.

TABLE OF CONTENTS

COPYRIGHT NOTICE	2
1 INTRODUCTION	5
ACTIVEPAIRING™	6
SYSTEM REQUIREMENTS	6
PACKAGE CONTENTS	6
PRODUCT REGISTRATION	6
HARDWARE FEATURES	7
2 HARDWARE AND SOFTWARE INSTALLATION	8
STEP 1: INSERT THE INSTALLATION CD	9
STEP 2: PLUG IN SCANNING COMPANION	9
STEP 3: COMPLETE THE FOUND NEW HARDWARE WIZARD	10
3 MANUAL <i>BLUETOOTH</i> CONNECTIONS	13
STEP 1: TURN ON THE CHS/CRS	14
STEP 2: ADD CHS/CRS TO MICROSOFT BLUETOOTH UTILITY	14
STEP 3: START SOCKETSCAN	17
STEP 4: CONFIGURE SCANNER SETTINGS	17
STEP 5: RESTART SOCKETSCAN	19
STEP 6: CONNECT TO CHS/CRS	20
AUTO-RECONNECT	22
DISCONNECTING	22
4 CONNECT!AGENT	23
STEP 1: TURN ON THE CHS/CRS	24
STEP 2: START SOCKETSCAN	24
STEP 3: CONFIGURE SCANNER SETTINGS	24
STEP 4: RESTART SOCKETSCAN	26
STEP 5: CONNECT TO CHS/CRS	27
AUTO-RECONNECT	28
DISCONNECTING	28
5 ACTIVEPAIRING	29
STEP 1: TURN ON THE CRS	31
STEP 2: ADD CRS TO MICROSOFT BLUETOOTH UTILITY	31
STEP 3: START SOCKETSCAN	34
STEP 4: CONFIGURE SCANNER SETTINGS	34
STEP 5: RESTART SOCKETSCAN	36
STEP 6: STICK ACTIVEPAIRING BAR CODES ONTO COMPUTER	36
STEP 7: SCAN INITIATOR BAR CODE	36
STEP 8: ENTER PASSKEY	37
PAIRING AND CONNECTING TO ANOTHER COMPUTER	38
AUTO-RECONNECT	38

DISCONNECTING 38

APPENDICES

A | SPECIFICATIONS 39

B | SAFETY AND USAGE TIPS 41

C | TECHNICAL SUPPORT 43

LIMITED WARRANTY 44

REGULATORY COMPLIANCE 48

1 | INTRODUCTION

Do you want to use Socket Mobile cordless bar code scanners with your notebook or desktop computer, but it doesn't have *Bluetooth* built in? Just plug in Scanning Companion, and your computer will be ready to capture data from the Cordless Hand Scanner (CHS) Series 7 or Cordless Ring Scanner (CRS) Series 9. Scanning Companion features a USB 2.0 interface and a powerful Class 1 *Bluetooth* radio with a range of 100 meters (328 feet).

Eliminate compatibility problems and expensive downtime by using a *Bluetooth* adapter and bar code scanner from Socket Mobile, a name you trust. You'll have peace of mind knowing Socket Mobile products are designed to work together for a simple, trouble-free implementation.



With Scanning Companion, your computer will be ready to capture bar code data without the hassle or physical limitations of cabled solutions. This ensures not only optimal efficiency of data collection, but also eliminates the risk of tripping over cables or getting cables tangled in industrial equipment.

Scanning Companion is compatible with Socket Mobile Connect!Agent™ software for automatic connections to your CHS or CRS.

ACTIVEPAIRING™

Socket Mobile ActivePairing technology enables you to quickly pair/unpair the CRS with a computer by simply scanning a special bar code. It is ideal for users who need to roam from system to system but still use the same CRS unit. By making *Bluetooth* connections easy for any user, ActivePairing helps to eliminate support costs and downtime in enterprise deployments.

The Scanning Companion package includes labels pre-printed with ActivePairing bar codes customized for your Scanning Companion. This makes Scanning Companion ready to deploy out of the box for implementations with ActivePairing.

Note: ActivePairing does not work with the CHS at this time.

SYSTEM REQUIREMENTS

Your computer should satisfy these requirements:

- Windows Mobile XP or XP Tablet Edition
- Microsoft *Bluetooth* stack

PACKAGE CONTENTS

The Scanning Companion package includes these items:

- Scanning Companion
- CD containing software (INF file) and user documentation
- ActivePairing bar code labels
- Booklets with copyright, warranty, and regulatory compliance information

PRODUCT REGISTRATION

Socket highly recommends that all customers register their Socket products. Registered users receive the following benefits:

- Priority for technical support
- Special offers for future products and upgrades
- The latest new product information.

Register online at: www.socketmobile.com/support/support/new

HARDWARE FEATURES

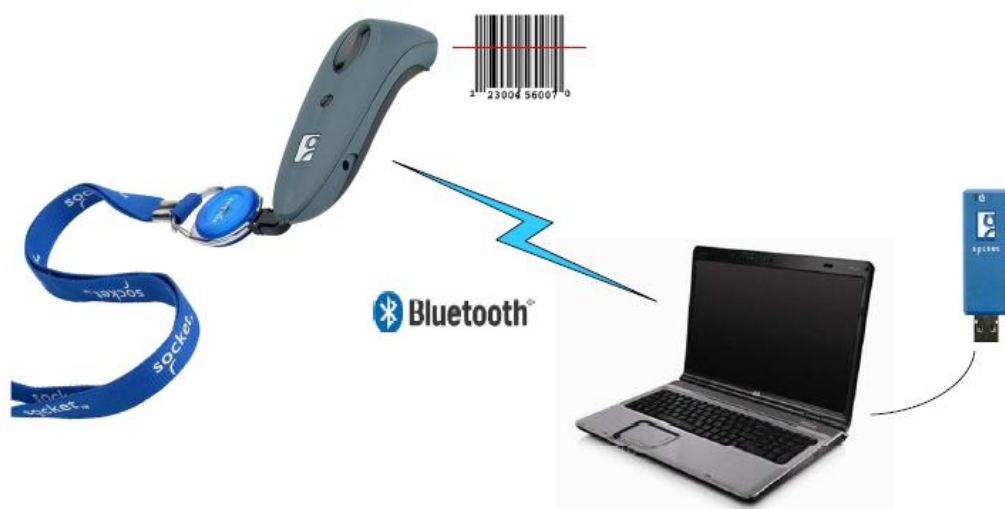
Power Status LED

LED Activity	Meaning
On (Blue)	Scanning Companion is receiving power from your computer
Off	Scanning Companion is off

2 | HARDWARE AND SOFTWARE INSTALLATION

This chapter explains how to install Scanning Companion in a Windows XP computer for use with the Cordless Hand Scanner (CHS) Series 7 or the Cordless Ring Scanner (CRS) Series 9.

After completing the instructions in this chapter, proceed to the appropriate chapter for connection instructions, based on *Bluetooth* connection method you plan to use.



INSTALLATION SUMMARY

STEP 1: Insert the installation CD.

STEP 2: Plug in Scanning Companion.

STEP 3: Complete the Found New Hardware Wizard.

STEP 1: INSERT THE INSTALLATION CD

Note: For the best user experience, Socket Mobile recommends that you uninstall any third-party Bluetooth stacks on your computer.

Insert the installation CD into the CD drive of your computer



STEP 2: PLUG IN SCANNING COMPANION

Plug Scanning Companion into the USB port of your computer. The LED should turn on (blue) to indicate that it is on.



Note: The LED indicates power only.

STEP 3: COMPLETE THE FOUND NEW HARDWARE WIZARD

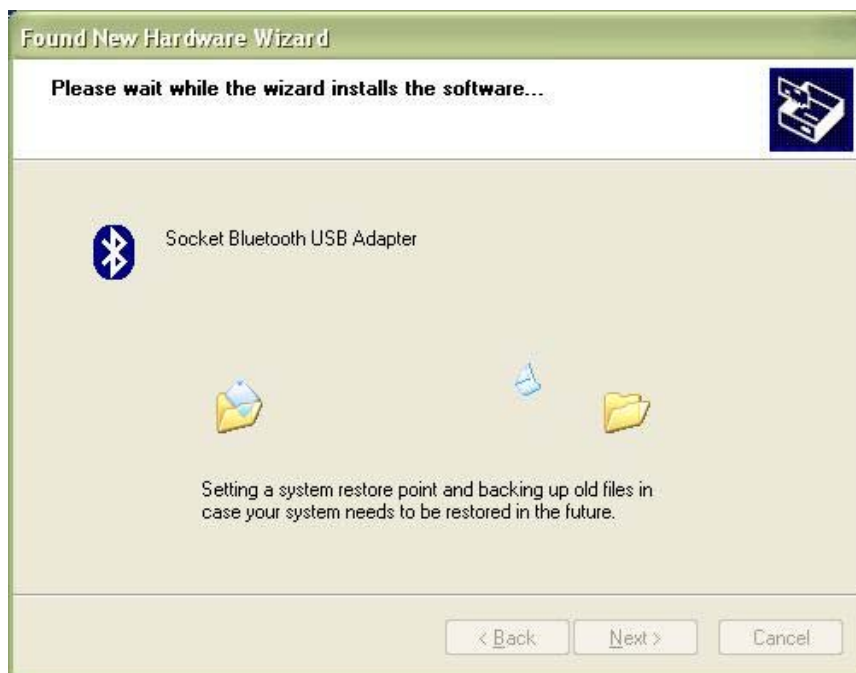
1. After you insert Scanning Companion, the Found New Hardware Wizard will automatically launch. Click **Next**.



2. The wizard will begin searching for the software.



3. After the wizard finds the software, it will begin installing.



4. In the last screen click **Finish**.



5. A series of notification balloons will appear in the bottom right of your screen. The last one should report that the new hardware is installed and ready to use.



6. After software installation, a *Bluetooth* icon may appear in the bottom right corner, depending on your task tray.



3 | MANUAL *BLUETOOTH* CONNECTIONS

This chapter explains how to manually connect Scanning Companion to the Cordless Hand Scanner (CHS) Series 7 or the Cordless Ring Scanner (CRS) Series 9 using the Microsoft *Bluetooth* utility built into Windows XP.

If you would like automatic *Bluetooth* connections using Socket Mobile Connect!Agent software, please refer to Chapter 4.

If you would like to pair and connect using Socket Mobile ActivePairing, please refer to Chapter 5.



SETUP SUMMARY

STEP 1: Turn on the CHS/CRS.

STEP 2: Add the CHS/CRS to the Microsoft *Bluetooth* utility.

STEP 3: Start SocketScan.

STEP 4: Configure scanner settings.

STEP 5: Restart SocketScan.

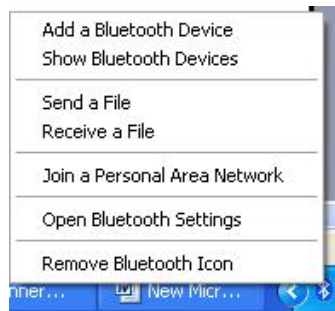
STEP 6: Connect to CHS/CRS.

STEP 1: TURN ON THE CHS/CRS

Turn on the CHS/CRS. Make sure it has sufficient battery power. Refer to your CHS/CRS documentation for instructions.

STEP 2: ADD CHS/CRS TO MICROSOFT *BLUETOOTH* UTILITY

1. Use the Add Bluetooth Device Wizard to discover and connect to the CHS/CRS. Click on the *Bluetooth* icon in the task tray. In the pop-up menu, click **Add a Bluetooth Device**.



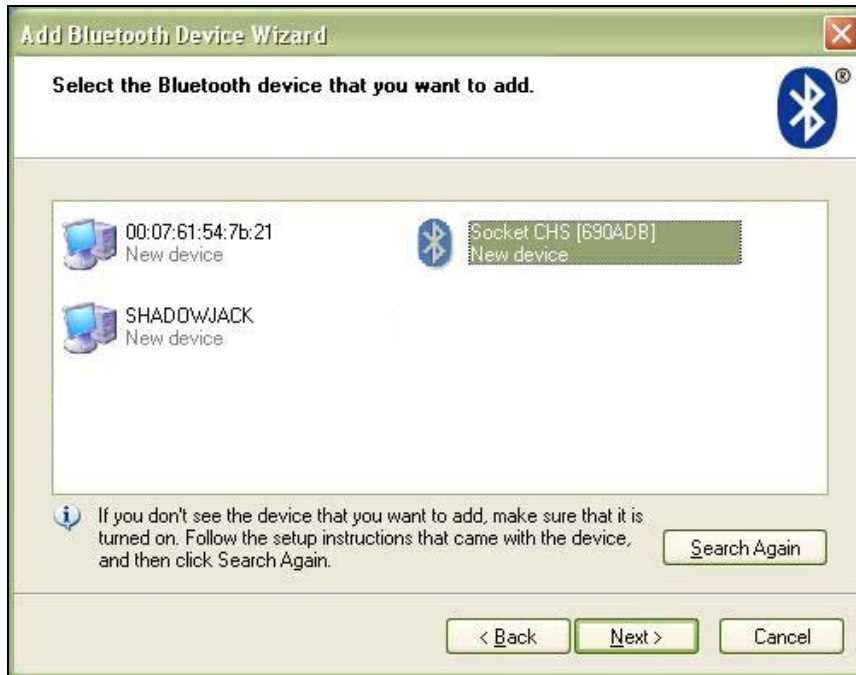
Note: If the Bluetooth icon does not appear, click Start | Control Panel | Bluetooth Devices. In the Bluetooth Devices utility, click Add.

2. The Add Bluetooth Device Wizard will launch. Check the box **My device is set up and ready to be found**. Click **Next**.



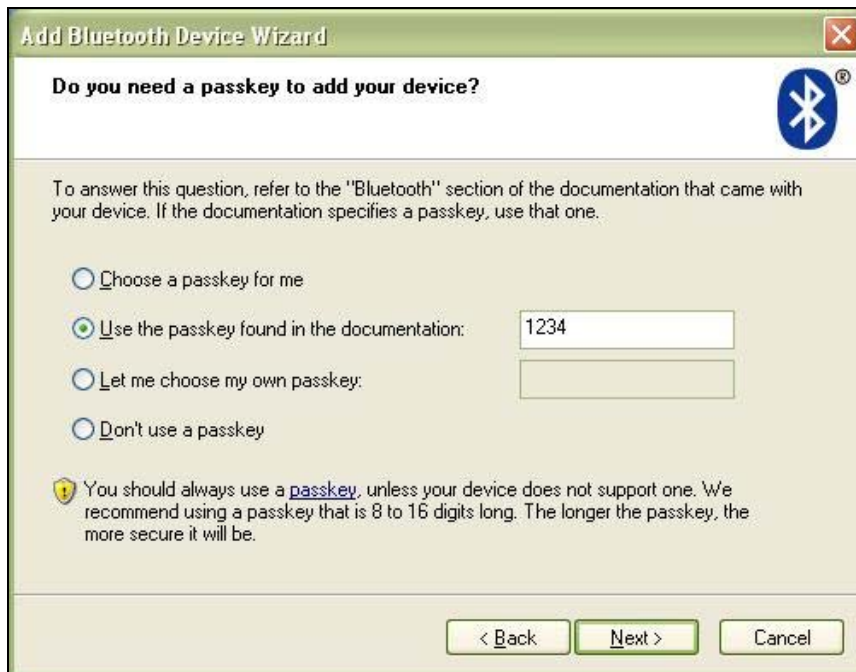
3. Your computer will search for *Bluetooth* devices in range.

4. During the device search, select **Socket CHS [xxxxxx]** or **Socket CRS [xxxxxx]**. Click **Next**.

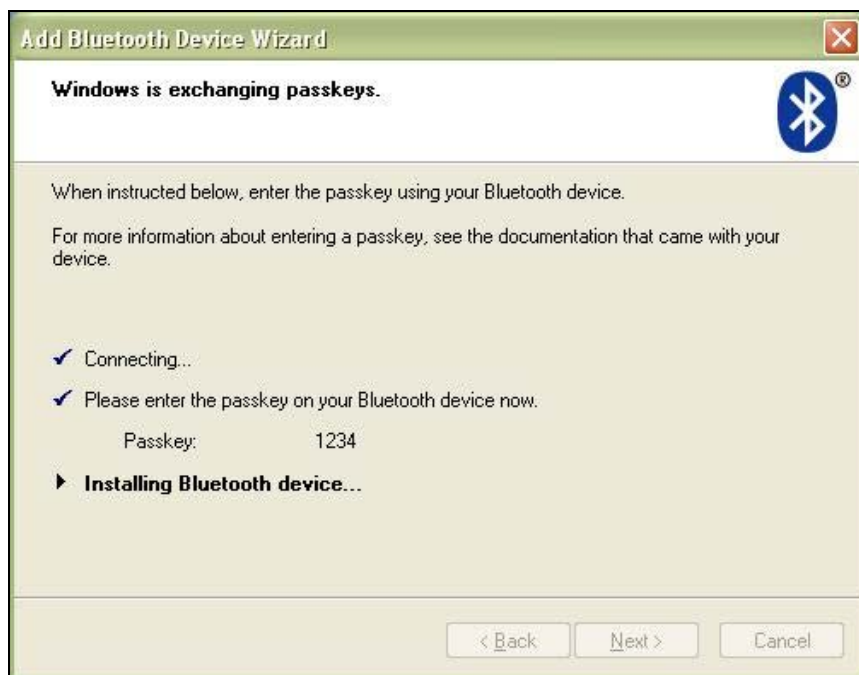


The characters in brackets are the last 6 characters of the scanner's Bluetooth MAC address.

5. In the next screen, select **Use the passkey found in the documentation**. Enter the default passkey **1234**. Click **Next**.



6. Your computer will connect to the CHS/CRS.



7. The last screen will report the COM port numbers. Remember the **Outgoing COM port** number.

Click **Finish**.



*Note: If you forget the COM port number, click:
Start | Control Panel | Bluetooth Devices | COM Ports.*

STEP 3: START SOCKETSCAN

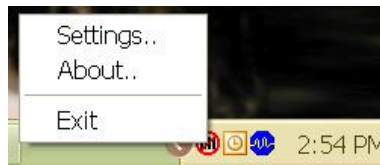
1. Start SocketScan. Double-click on the SocketScanXP icon on your desktop.



2. The SocketScan icon  will appear at the bottom of your screen.

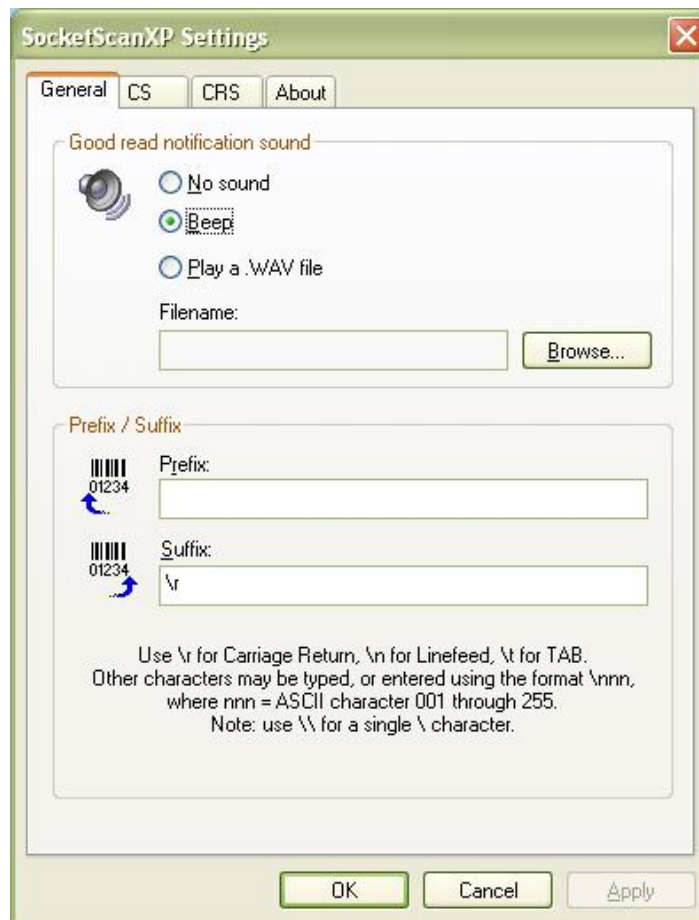
STEP 4: CONFIGURE SCANNER SETTINGS

1. Click on the SocketScan icon. In the pop-up menu, click **Settings**.

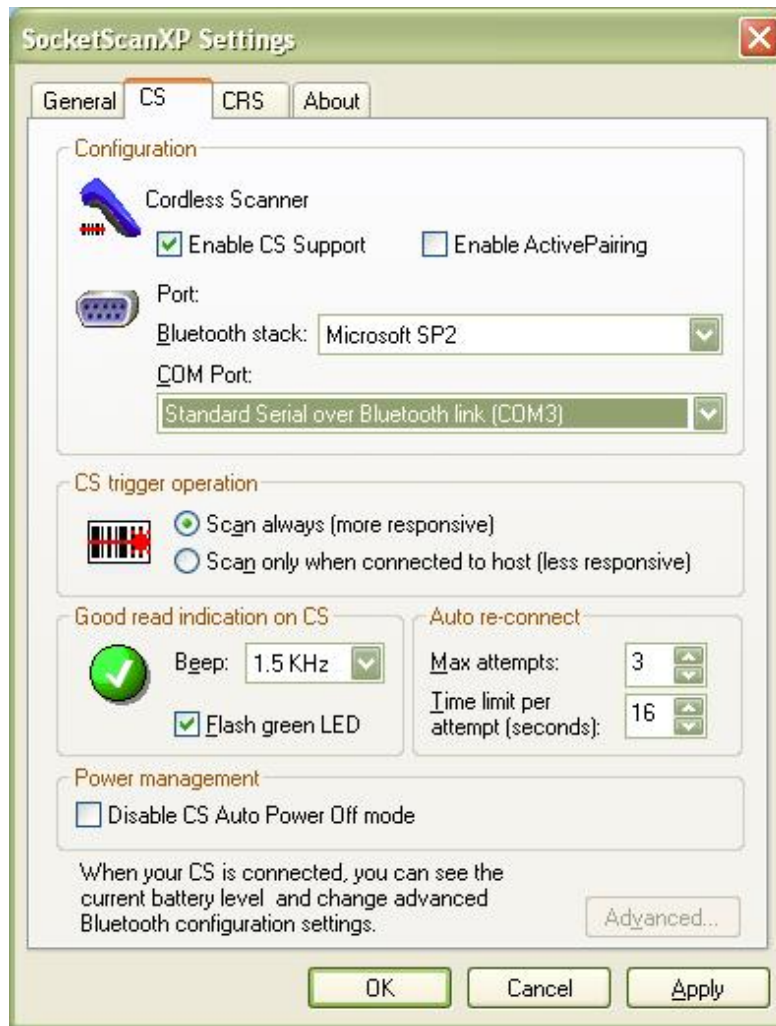


Alternatively, click Start | Control Panel | SocketScanXP Settings.

2. The SocketScanXP Settings utility will appear. Click on the **CS** tab.




3. Enter the following settings:



- **Enable CS support:** Check this box. IMPORTANT!!!
- **Enable ActivePairing:** Uncheck.
- **Bluetooth stack:** Select **Microsoft SP2**.
- **COM Port:** Select the **Standard Serial over Bluetooth link** with the Outgoing COM port number reported by the Add New *Bluetooth Device Wizard*.
- **CS trigger operation:** Select whether you want the CHS/CRS to scan only when a *Bluetooth* connection to the device is detected. If you select **Scan only when connected to host**, scanning will be a few milliseconds slower (Error Proof Protocol will be enabled).
- **Good read indication on CS:** Select how you would like the CHS/CRS to indicate that it has successfully read data.

- **Auto re-connect:** Select the maximum number of tries and time limit for the CHS/CRS to try to reconnect to your computer in case they move out of range.
 - **Battery Level:** No progress bar should appear since you are not connected to the CHS/CRS.
 - **Power management:** By default, the CHS/CRS automatically shuts off if there is no *Bluetooth* connection for 20 minutes. Check to disable.
 - **Advanced:** When the computer is connected to the CHS/CRS, you can modify the *Bluetooth* friendly name and security settings of the CHS/CRS. For more information, please refer to the CHS/CRS documentation.
4. After entering settings, click **OK** to save the changes.
 5. If SocketScan is open, you will be prompted to exit and restart SocketScan. Click **OK**. Click on the SocketScan icon at the bottom of your screen and in the pop-up menu, click **Exit**.

STEP 5: RESTART SOCKETSCAN

1. Start SocketScan. Double-click on the SocketScanXP icon on your desktop.
2. The SocketScan icon  will appear at the bottom of your screen.



STEP 6: CONNECT TO CHS/CRS

1. Right-click the SocketScan icon at the bottom of the screen and click **Connect CS**.



2. A balloon will appear reporting that a *Bluetooth* device wants to connect to your computer. Click on the balloon.



3. When prompted, enter the passkey **1234**. Complete the rest of the wizard to connect.

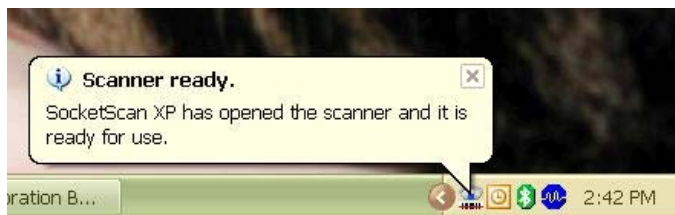


*After you configure the correct Bluetooth hardware settings in SocketScan, the **Connect CS** menu option allows you to connect to the CHS directly from SocketScan, instead of manually connecting with the Microsoft Bluetooth utility.*

*The **Connect CS** option will not appear unless you selected **Enable CS Support** in the SocketScan settings. See page 18.*




SocketScan will not be able to connect if you have another device assigned as your favorite or default Bluetooth serial device.

4. Your computer will connect to the CHS/CRS, indicated by a beep and a notification balloon.



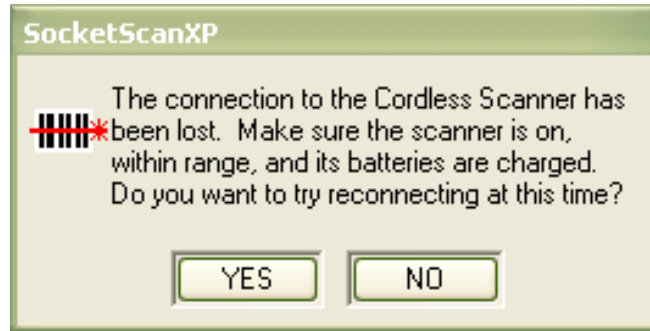
5. The task tray icon at the bottom of your screen will change to an image of the CHS or CRS to indicate that SocketScan has connected.

Now you are ready to begin scanning bar code data into your Windows XP computer. Please refer to your CHS/CRS documentation for instructions.

SocketScan Icon	Meaning
	No scanner connected.
	Cordless Hand Scanner connected.
	Cordless Ring Scanner connected.

AUTO-RECONNECT

If your computer suspends or the CHS/CRS turns off or moves out of range, the connection will be lost. After the computer turns on again or the CHS/CRS turns on again or returns to range, SocketScan will try to reconnect according to the auto reconnect settings you chose in SocketScan.



After the time limit for reconnection attempts has passed, you can click on the **Socket CS Connect** icon on the desktop to manually initiate reconnection.



DISCONNECTING

To disconnect, click on the scanner icon and click **Disconnect CS**.

4 | CONNECT!AGENT

This chapter explains how to use Connect!Agent to connect Scanning Companion to the Cordless Hand Scanner (CHS) Series 7 or the Cordless Ring Scanner (CRS) Series 9.

In order to use Connect!Agent, you must install it on your computer. Refer to your CHS/CRS documentation for more information.



SETUP SUMMARY

STEP 1: Turn on the CHS/CRS.

STEP 2: Start SocketScan.

STEP 3: Configure scanner settings.

STEP 4: Restart SocketScan.

STEP 5: Connect to CHS/CRS.

STEP 1: TURN ON THE CHS/CRS

Turn on the CHS/CRS. Make sure it has sufficient battery power. Refer to your CHS/CRS documentation for instructions.

STEP 2: START SOCKETSCAN

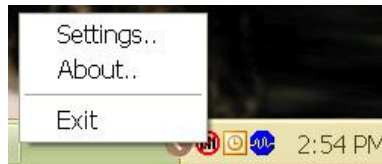
1. Start SocketScan. Double-click on the SocketScanXP icon on your desktop.



2. The SocketScan icon  will appear at the bottom of your screen.

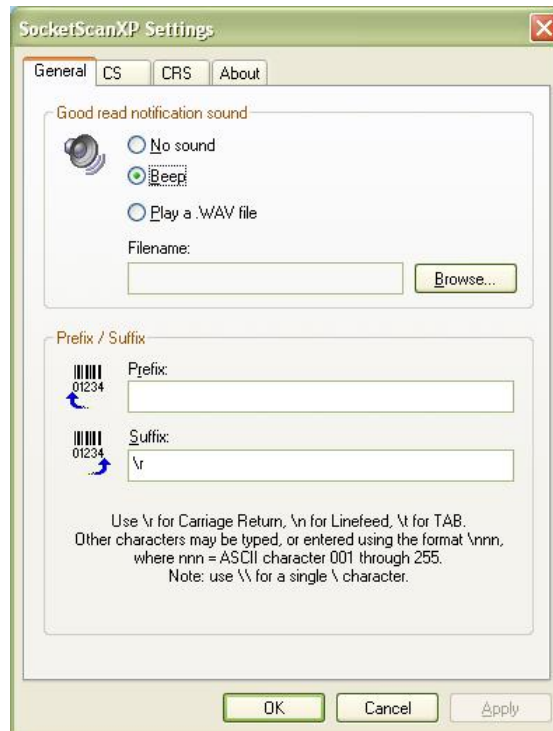
STEP 3: CONFIGURE SCANNER SETTINGS

1. Click on the SocketScan icon. In the pop-up menu, click **Settings**.



Alternatively, click Start | Control Panel | SocketScanXP Settings.

2. The SocketScanXP Settings utility will appear. Click on the **CS** tab.




3. Enter the following settings:



- **Enable CS support:** Check this box. IMPORTANT!!!
- **Enable ActivePairing:** Uncheck.
- **Bluetooth stack:** Select **Socket Connect!Agent**.
- **CS trigger operation:** Select whether you want the CHS/CRS to scan only when a *Bluetooth* connection to the device is detected. If you select **Scan only when connected to host**, scanning will be a few milliseconds slower (Error Proof Protocol will be enabled).
- **Good read indication on CS:** Select how you would like the CHS/CRS to indicate that it has successfully read data.
- **Auto re-connect:** Select the maximum number of tries and time limit for the CHS/CRS to try to reconnect to your computer in case they move out of range.

- **Battery Level:** No progress bar should appear since you are not connected to the CHS/CRS.
 - **Power management:** By default, the CHS/CRS automatically shuts off if there is no *Bluetooth* connection for 20 minutes. Check to disable.
 - **Advanced:** When the computer is connected to the CHS/CRS, you can modify the *Bluetooth* friendly name and security settings of the CHS/CRS. For more information, please refer to the CHS/CRS documentation
4. After entering settings, click **OK** to save the changes.
 5. If SocketScan is open, you will be prompted to exit and restart SocketScan. Click **OK**. Click on the SocketScan icon at the bottom of your screen and in the pop-up menu, click **Exit**.

STEP 4: RESTART SOCKETSCAN

1. Start SocketScan. Double-click on the SocketScanXP icon on your desktop.
2. The SocketScan icon  will appear at the bottom of your screen.



STEP 5: CONNECT TO CHS/CRS

1. Right-click the SocketScan icon at the bottom of the screen and click **Connect CS**.



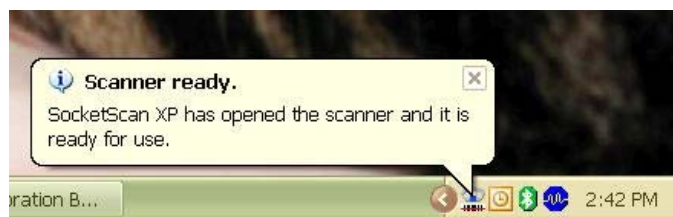
2. If this is your first time connecting, Connect!Agent will automatically search for the CHS/CRS and configure the connection.



*The **Connect CS** option will not appear unless you selected **Enable CS Support** in the SocketScanXP settings. See page 25.*




SocketScan will not be able to connect if you have another device assigned as your favorite or default Bluetooth serial device.

3. Your computer will connect to the CHS/CRS, indicated by a beep and a notification balloon.



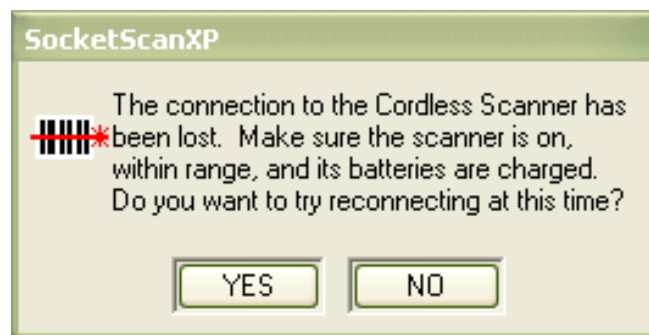
4. The task tray icon at the bottom of your screen will change to an image of the CHS or CRS to indicate that SocketScan has connected.

Now you are ready to begin scanning bar code data into your Windows XP computer. Please refer to your CHS/CRS documentation for instructions.

SocketScan Icon	Meaning
	No scanner connected.
	Cordless Hand Scanner connected.
	Cordless Ring Scanner connected.

AUTO-RECONNECT

If your computer suspends or the CHS/CRS turns off or moves out of range, the connection will be lost. After the computer turns on again or the CHS/CRS turns on again or returns to range, SocketScan will try to reconnect according to the auto reconnect settings you chose in SocketScan.



After the time limit for reconnection attempts has passed, you can click on the **Socket CS Connect** icon on the desktop to manually initiate reconnection.



DISCONNECTING

To disconnect, click on the scanner icon and click **Disconnect CS**.

5 | ACTIVEPAIRING

This chapter explains how to use ActivePairing to pair and connect Scanning Companion to the Cordless Ring Scanner (CRS) Series 9. Scanning Companion comes with ActivePairing bar code labels for easy deployment.



ActivePairing enables CRS Series 9 scanners to connect to a Windows XP host computer without requiring the host computer to initiate the connection. With ActivePairing, the CRS can pair/ unpair with a computer by simply scanning a special bar code.

- Enabling ActivePairing mode will set the CRS in an “initiator” mode. In initiator mode, the CRS can pair/unpair with a host computer by scanning a special bar code.
- By not enabling ActivePairing mode, the CRS is in its current default state of “acceptor” mode.
- If ActivePairing is enabled, the user can return the CRS to normal “acceptor” mode by scanning a special bar code.

Notes: Only the latest revisions of the wireless wrist module support ActivePairing. Check the label on the back of the wrist module for the part number revision letter.

CRS Version	Part Number	Revisions with Active Pairing Support
9M	9010-00730	“F” or later
9P	9010-00703	“F” or later

ActivePairing Bar Code Labels

Scanning Companion comes with a set of ActivePairing bar code labels. For instructions on how to print more labels, please refer to the CRS documentation.

SETUP SUMMARY

STEP 1: Turn on the CRS.

STEP 2: Add the CRS to the Microsoft *Bluetooth* utility.

STEP 3: Start SocketScan.

STEP 4: Configure scanner settings.

STEP 5: Restart SocketScan.

STEP 6: Stick ActivePairing Bar Code Labels onto Computer

STEP 7: Scan the Initiator Bar Code.

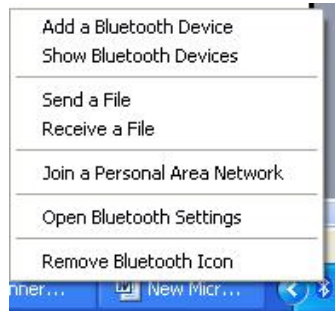
STEP 8: Enter the Passkey

STEP 1: TURN ON THE CRS

Turn on the CRS. Make sure it has sufficient battery power. Refer to your CRS documentation for instructions.

STEP 2: ADD CRS TO MICROSOFT *BLUETOOTH* UTILITY

1. Use the Add Bluetooth Device Wizard to discover and connect to the CRS. Click on the *Bluetooth* icon in the task tray. In the pop-up menu, click **Add a Bluetooth Device**.



Note: If the Bluetooth icon does not appear, click Start | Control Panel | Bluetooth Devices. In the Bluetooth Devices utility, click Add.

2. The Add Bluetooth Device Wizard will launch. Check the box **My device is set up and ready to be found**. Click **Next**.



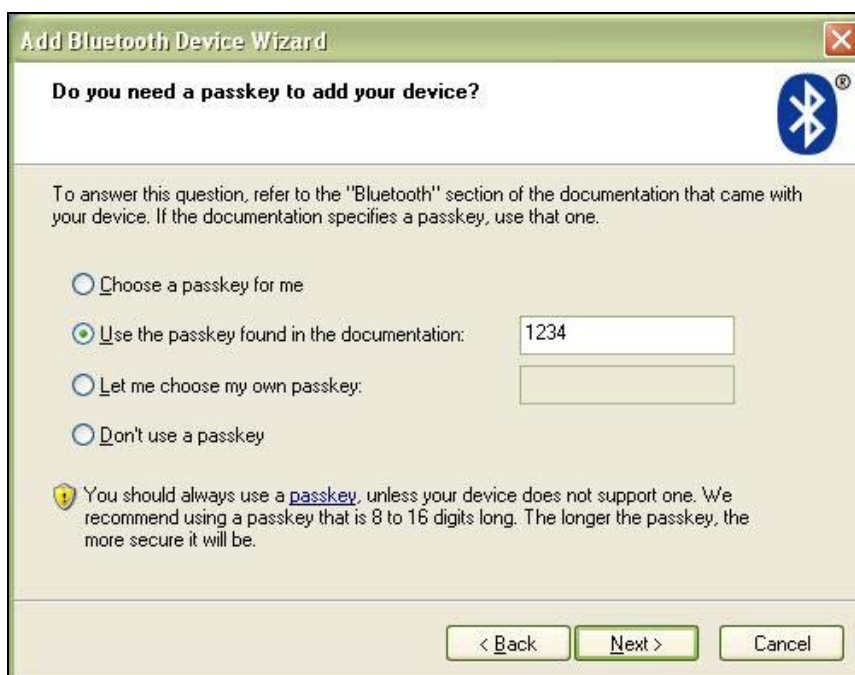
3. Your computer will search for *Bluetooth* devices in range.

4. During the device search, select **Socket CRS [xxxxxx]**. Click **Next**.

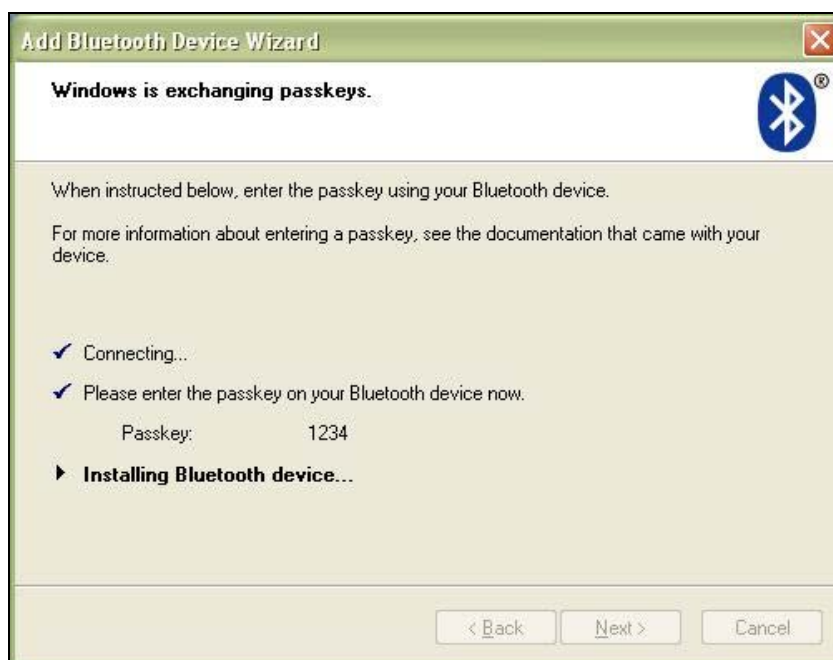


The characters in brackets are the last 6 characters of the scanner's Bluetooth MAC address.

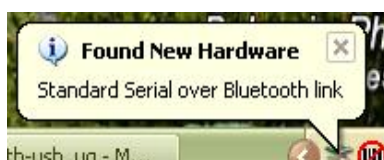
5. In the next screen, select **Use the passkey found in the documentation**. Enter the default passkey **1234**. Click **Next**.



6. Your computer will connect to the CRS.



7. A series of notification balloons will appear.



8. In the last screen, remember the **Incoming COM port** number. Click **Finish**.



*Note: If you forget the COM port number, click: **Start | Control Panel | Bluetooth Devices | COM Ports.***

STEP 3: START SOCKETSCAN

1. Start SocketScan. Double-click on the SocketScanXP icon on your desktop.

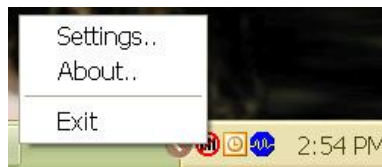


SocketScanXP

2. The SocketScan icon  will appear at the bottom of your screen.

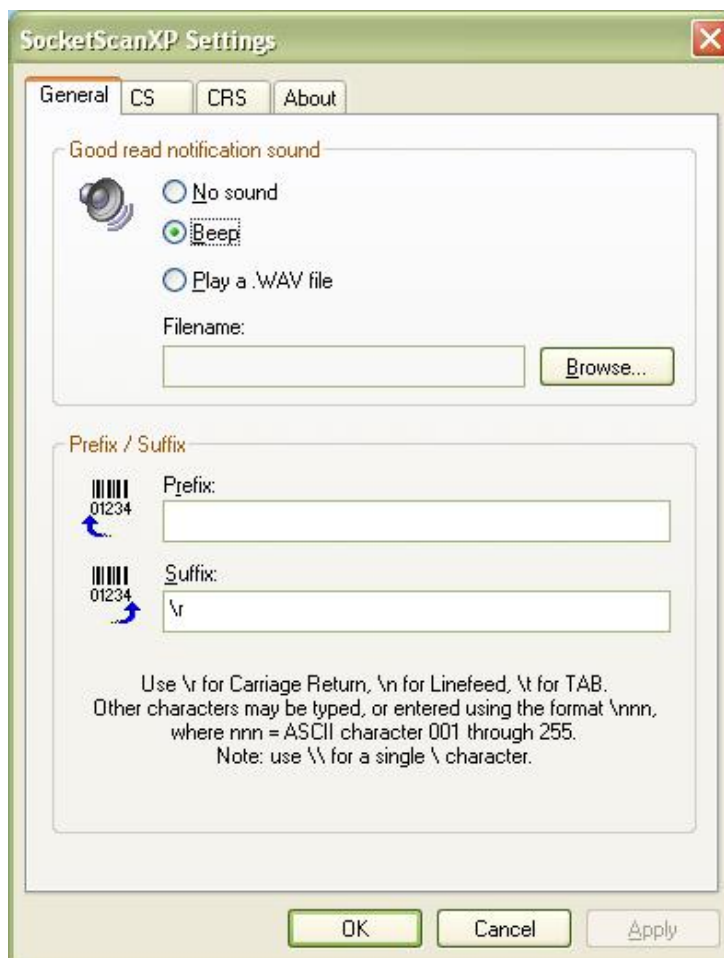
STEP 4: CONFIGURE SCANNER SETTINGS

1. Click on the SocketScan icon. In the pop-up menu, click **Settings**.

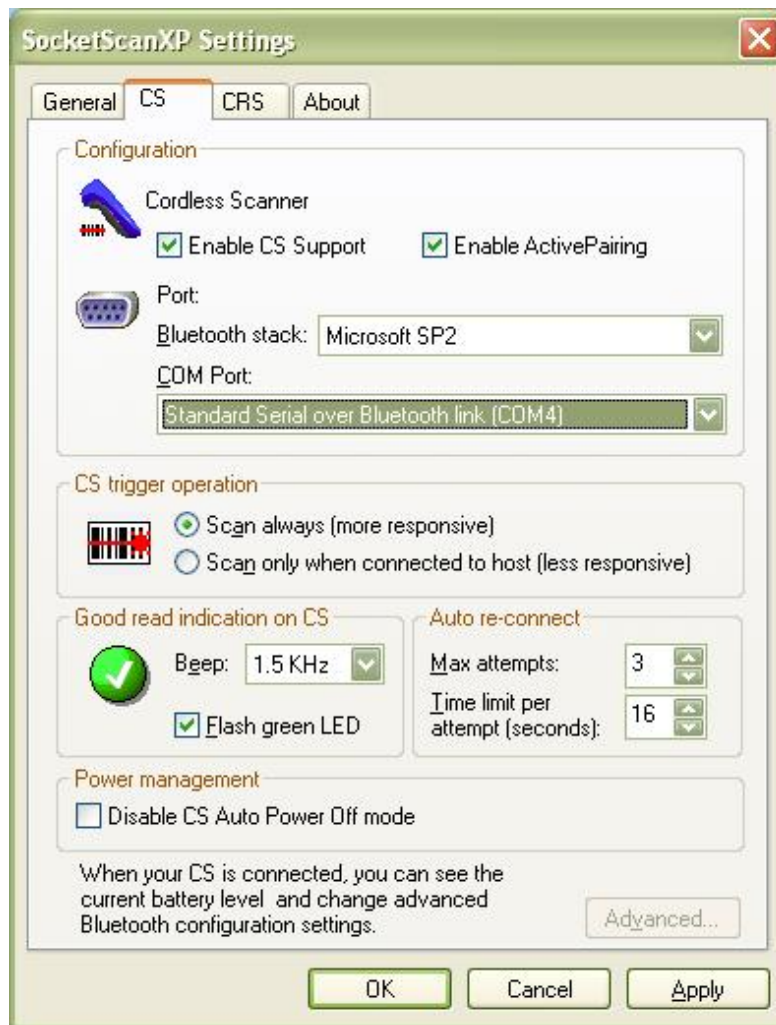


Alternatively, click Start | Control Panel | SocketScanXP Settings.

2. The SocketScanXP Settings utility will appear. Click on the **CS** tab.




3. Enter the following settings:



- **Enable CS support:** Check this box. IMPORTANT!!!
- **Enable ActivePairing:** Check this box. IMPORTANT!!!
- **Bluetooth stack:** Select **Microsoft SP2**.
- **COM Port:** Select the **Standard Serial over Bluetooth link** with the Incoming COM port number reported by the Add New Bluetooth Device Wizard.
- **CS trigger operation:** Select whether you want the CRS to scan only when a *Bluetooth* connection to the device is detected. If you select **Scan only when connected to host**, scanning will be a few milliseconds slower (Error Proof Protocol will be enabled).
- **Good read indication on CS:** Select how you would like the CRS to indicate that it has successfully read data.

- **Auto re-connect:** Select the maximum number of tries and time limit for the CRS to try to reconnect to your computer in case they move out of range.
 - **Battery Level:** No progress bar should appear since you are not connected to the CRS.
 - **Power management:** By default, the CRS automatically shuts off if there is no *Bluetooth* connection for 20 minutes. Check to disable.
 - **Advanced:** When the computer is connected to the CRS, you can modify the *Bluetooth* friendly name and security settings of the CRS. For more information, please refer to the CHS/CRS documentation.
4. After entering settings, click **OK** to save the changes.
 5. If SocketScan is open, you will be prompted to exit and restart SocketScan. Click **OK**. Click on the SocketScan icon at the bottom of your screen and in the pop-up menu, click **Exit**.

STEP 5: RESTART SOCKETSCAN

1. Start SocketScan. Double-click on the SocketScanXP icon on your desktop.
2. The SocketScan icon  will appear at the bottom of your screen.



STEP 6: STICK ACTIVEPAIRING BAR CODES ONTO COMPUTER

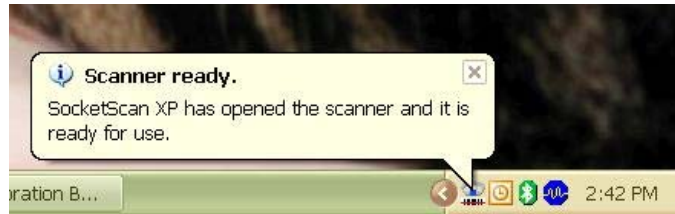
If desired, stick the included Active Pairing bar code labels to the computer that you plan to use Scanning Companion with.

STEP 7: SCAN INITIATOR BAR CODE



Scan the “Initiator” bar code, which is the FNI bar code at the top of the included label.

STEP 8: ENTER PASKEY

1. Within 10 seconds after scanning the Initiator bar code, you will be prompted to enter a passkey. Enter the passkey **1234**.
2. Your computer will connect to the CHS/CRS, indicated by a beep and a notification balloon.



3. The task tray icon at the bottom of your screen will change to an image of the CRS to indicate that SocketScan has connected.

SocketScan Icon	Meaning
	No scanner connected.
	Cordless Ring Scanner connected.

Note:

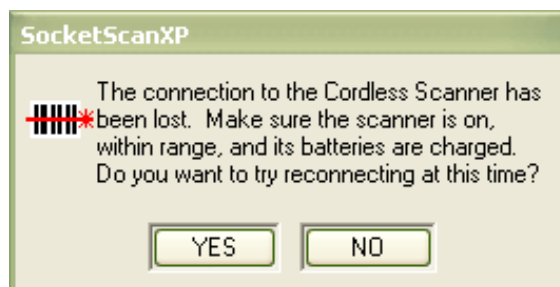
- *It may take several seconds for the CRS to pair and connect.*
 - *SocketScan will not be able to connect if you have set another device as your favorite or default Bluetooth serial device.*
4. Now you are ready to begin scanning bar code data into your Windows XP computer. Please refer to your CRS documentation for instructions.

PAIRING AND CONNECTING TO ANOTHER COMPUTER

1. Scan the “Acceptor” bar code, (the FNA bar code on the bottom of the included label) to disconnect from the first host computer.
2. Move within *Bluetooth* range of the second host computer.
3. Scan the “Initiator” bar code associated with the second host computer.
4. Within 10 seconds, you will be prompted to enter a passkey. Enter the passkey **1234**.

AUTO-RECONNECT

If your computer suspends or the CHS/CRS turns off or moves out of range, the connection will be lost. After the computer turns on again or the CHS/CRS turns on again or returns to range, SocketScan will try to reconnect according to the auto reconnect settings you chose in SocketScan.



After the time limit for reconnection attempts has passed, you can click on the **Socket CS Connect** icon on the desktop to manually initiate reconnection.



DISCONNECTING

To disconnect, do the following:

1. Unpair the CRS from Scanning Companion by scanning the #FNA# bar code.
2. Turn off the CRS.

IMPORTANT! Do not try to disconnect by simply clicking “Disconnect” in the SocketScan menu, or the CRS can hang.

APPENDIX A

SPECIFICATIONS

Physical Characteristics

Size: 69 x 20 x 8.6 mm (2.7 x 0.79 x 0.34 in.)

Total Mass: 11 g (0.39 oz)

Interface: USB 2.0

LED: Power (blue)

Environmental Characteristics:

Operating Temp: 32 to 113°F (0 to 45°C)

Storage Temp: -4 to +113°F (-20 to +45°C) ambient

Operating/Storage Humidity: 90% maximum non-condensing

Bluetooth Characteristics

Protocol: Bluetooth 2.0 + EDR (Enhanced Data Rate)

Chipset: CSR BC04-EXT

Antenna: Integrated into the adapter housing

Radio Range: Class 1 Bluetooth - up to 330 ft (100 m), depending on environment and CHS/CRS version

Sensitivity: -77 dBm typical

Frequency Range: 2.45 GHz ISM band, FHSS

Selectable Channels: 79

Topology: Point-to-point and point to multipoint

Power Consumption: 5 VDC, 200 mA maximum (normal operation)

Output Power: 16 dBm maximum

Security: Data encryption up to 128 bits

Hardware and Software Compatibility:

Hardware: Notebook, tablet and desktop computers running Windows XP/XP Tablet Edition

Software: Microsoft Bluetooth stack, SocketScan, Connect!Agent

Certification/Compliance

FCC: Part 15, Class B

CE: EN55024:2003, EN300328, EN300826, RoHS

A-Tick s.182

Bluetooth 2.0 +EDR

Microsoft WHQL

About Bluetooth Range

Scanning Companion features a powerful Class 1 *Bluetooth* radio to provide the maximum possible range. As with all wireless technologies, the connection range can vary widely depending on many factors such as the placement of the peripheral devices, the type and size of physical obstacles and the presence and activity level of competing radio transmissions.

The following conditions appear to reduce the *Bluetooth* connection range:

- The presence of soft, absorbent materials such as paper, fiberglass insulation, foam material in office cubical walls, carpeting and, to a lesser extent, even sheetrock and wood construction materials. Hard materials such as concrete increase the range.
- Human bodies or containers of liquid positioned between Scanning Companion and the CHS/CRS.
- The presence and activity level of competing *Bluetooth* or 802.11 (Wi-Fi) systems using the same 2.4 GHz frequency.
- Metal in a grid pattern, such as chain link fencing or chicken wire. This type of material may block the *Bluetooth* (or Wi-Fi) signal completely.
- The device at the other end

APPENDIX B

SAFETY AND USAGE TIPS

About *Bluetooth* and Health

Bluetooth wireless technology allows you to use short-range radio signals to connect a variety of devices, such as bar code scanners, mobile phones, Pocket PCs, notebook computers, printers, LAN access points, and many other devices at home or work. These radio signals replace the cables that have traditionally connected these devices.

Class I *Bluetooth* products have small radio transmitters and receivers. Output power is normally very low, and for Scanning Companion, the maximum is only 16 dBm. This gives a working range of approximately 100 meters (328 feet).

The maximum exposure levels from *Bluetooth* products are far below recommended safety guidelines. At most, typical *Bluetooth* devices (1 mW) reach only one percent of the prescribed safety levels.

Product Care

- Do not expose your product to liquid, moisture or extreme humidity.
- Do not expose your product to extreme high or low temperatures.
- Do not expose your product to lit candles, cigarettes, or cigars, or to open flames, etc.
- Do not drop, throw or try to bend the product, as rough treatment could damage it.
- Do not paint your product, as the paint could obstruct parts and prevent normal use.
- Do not attempt to disassemble your product: a broken warranty seal will void the warranty. The product does not contain consumer serviceable components. Should your Scanning Companion need service, contact Socket Mobile technical support at: www.socketmobile.com/support/support/.
- Treat your product with care. Keep in a clean and dust-free place.
- Changes or modifications of this product, not expressly approved by Socket Mobile, may void the user's authority to operate the equipment.

Antenna Care

Do not place a metallic shield around Scanning Companion since it will reduce the radio transmission efficiency.

Efficient Use

For optimum performance, please make sure that there is no metal surrounding your Scanning Companion.

Driving

RF energy may affect some electronic systems in motor vehicles, such as car stereo, safety equipment, etc. Check with your vehicle manufacturer to be sure that Scanning Companion will not affect the vehicle's electronics.

Aircraft

- Turn off Scanning Companion before boarding any aircraft.
- To prevent interference with communications systems, you must not use Scanning Companion while the plane is in the air.
- Do not use it on the ground without permission from the crew.

Radio Frequency Exposure

Scanning Companion contains a radio transmitter and receiver. When in operation, it communicates with the Cordless Hand Scanner or Cordless Ring Scanner by receiving and transmitting radio frequency (RF) magnetic fields in the frequency range 2400 to 2500 MHz. The maximum output power of the radio transmitter is 16 dBm. Scanning Companion is designed to be in compliance with the RF exposure limits set by national authorities and international health agencies¹ when installed or used separately from other antennas or radio transmitters.

¹ Examples of RF exposure standards and guidelines:

ICNIRP, "Guidelines for limiting exposure to time-varying electric, magnetic, and electromagnetic fields (up to 300 GHz)", International Commission on Non-Ionizing Radiation Protection (ICNIRP), Health Physics, vol. 74, pp 494-533, April 1998.

99/519/EC, EU Council Recommendation on the limitation of exposure to the general public to electromagnetic fields 0 Hz – 300 GHz, Official Journal of the European Communities, July 12, 1999.

ANSI/IEEE C95.1-1992, "Safety levels with respect to human exposure to radio frequency electromagnetic fields, 3 kHz to 300 GHz", The Institute of Electrical and Electronics Engineers, Inc., New York, 1991.

FCC Report and Order, ET Docket 93-62, FCC 96-326, Federal Communications Commission (FCC), August 1996.

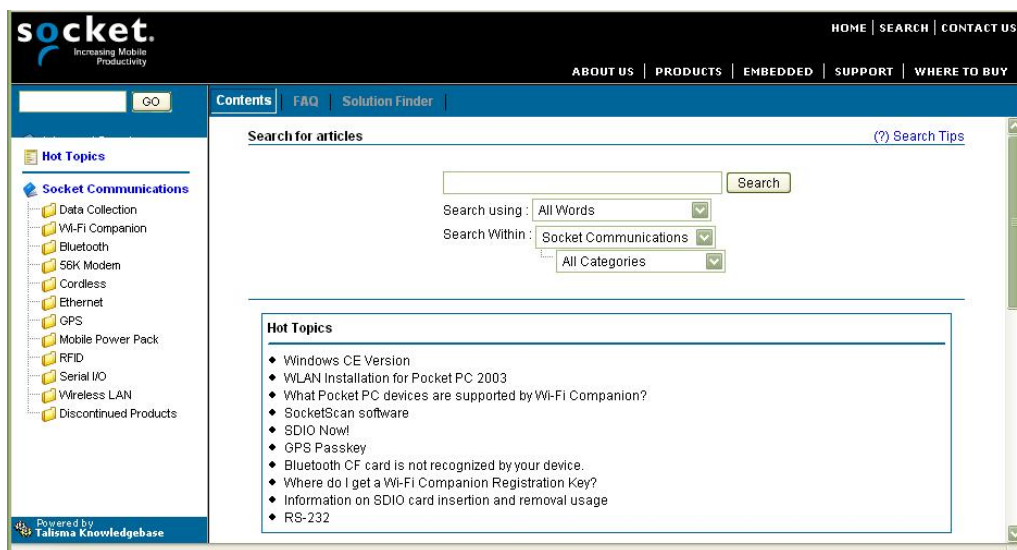
Radiocommunications (Electromagnetic Radiation Human Exposure) Standard 1999, Australian Communications Authority (ACA), May 1999.

APPENDIX C

TECHNICAL SUPPORT

Socket On-Line Support (SOS)

SOS is a virtual technical support assistant that can help you with your product support questions or FAQs. SOS responds immediately to your inquiry, and no product registration is required to use the system.



To access SOS, please visit: www.socketmobile.com/support/faq/

Live Technical Support

If you have trouble installing or using Scanning Companion, contact the Socket Mobile technical support department for assistance.

IMPORTANT! To obtain technical support, first register your product online at www.socketmobile.com/support/support/new

After you register your product, log in and click on the **Technical Support** tab. Click **Create New Ticket** to submit an online request for technical support. Afterwards, you can log in anytime to monitor the status of your request. If we are unable to resolve your support inquiry online, we can arrange for a technical support representative to call you at a specific time.

LIMITED WARRANTY

Socket Communications Incorporated (Socket) warrants this product against defects in material and workmanship, under normal use and service, for one (1) year from the date of purchase.

EXCLUDES: Consumables such as batteries, removable cables, cases, straps, chargers, and CF-to-PC Card adapters (90 day coverage only)

An extended warranty is available separately for the Cordless Hand Scanner or Cordless Ring Scanner. For more information, please visit:

www.socketmobile.com/support

Incompatibility is not a defect covered by Socket's warranty. During the warranty period, Socket will, at its option, repair or replace the defective product at no charge when furnished with proof of retail purchase, provided that you deliver the product to Socket or to an authorized Socket Service Center.

The returned product must be accompanied by a return material authorization (RMA) number issued by Socket or by Socket's Authorized Service Center. If you ship the product, you must use the original container or equivalent and you must pay the shipping charges to Socket. Socket will pay surface shipping charges back to any location in the contiguous United States. This warranty applies only to the original retail purchaser and is not transferable.

Socket may, at its option, replace or repair the product with new or reconditioned parts and the returned product becomes Socket's property. Socket warrants the repaired or replaced products to be free from defects in material or workmanship for ninety (90) days after the return shipping date, or for the remainder of the original warranty period, whichever is greater.

This warranty does not cover the replacement of products damaged by abuse, accident, misuse or misapplication, nor as a result of service or modification other than by Socket. This warranty is void if you install batteries into the product that were not supplied by Socket.

SOCKET IS NOT RESPONSIBLE FOR INCIDENTAL OR CONSEQUENTIAL DAMAGES RESULTING FROM BREACH OF ANY EXPRESS OR IMPLIED WARRANTY, INCLUDING DAMAGE TO PROPERTY AND, TO THE EXTENT PERMITTED BY LAW, DAMAGES FOR PERSONAL INJURY. THIS WARRANTY IS IN LIEU OF ALL OTHER WARRANTIES INCLUDING IMPLIED WARRANTIES OF MERCHANTABILITY AND FITNESS FOR A PARTICULAR PURPOSE.

Some states do not allow limitation of implied warranties, or the exclusion or limitation of incidental or consequential damages, so that the above limitations or exclusions may not apply to you. This warranty gives you specific legal rights and you may also have other rights which vary from state to state.

This product may contain fully tested, recycled parts, warranted as if new.

For warranty information, please visit: www.socketmobile.com/support

LIMITED SOFTWARE WARRANTY

LIMITED WARRANTY. SOCKET warrants that the original disk or CD ROM is free from defects for 90 days from the date of delivery of the SOFTWARE.

CUSTOMER REMEDIES. SOCKET'S entire liability and your exclusive remedy shall be, at SOCKET'S option, either (a) return of the price paid or (b) replacement of the SOFTWARE which does not meet SOCKET'S Limited Warranty and which is returned to SOCKET with a copy of your receipt. Any replacement SOFTWARE will be warranted for the remainder of the original warranty period or 30 days, whichever is longer. THESE REMEDIES ARE NOT AVAILABLE OUTSIDE OF THE UNITED STATES OF AMERICA.

NO OTHER WARRANTIES. SOCKET disclaims all other warranties, either express or implied, including but not limited to implied warranties of merchantability and fitness for a particular purpose, with respect to the SOFTWARE and the accompanying written materials. This limited warranty gives you specific legal rights. You may have others which vary from state to state.

NO LIABILITY FOR CONSEQUENTIAL DAMAGES. In no event shall SOCKET or its suppliers be liable for any damages whatsoever (including, without limitation, damages for loss of business profits, business interruption, loss of business information, or other pecuniary loss) arising out of the use of or inability to use the SOFTWARE, even if SOCKET has been advised of the possibility of such damages. Because some states do not allow the exclusion or limitation of liability for consequential or incidental damages, the above limitation may not apply to you.

EXPORT LAW ASSURANCES. You may not use or otherwise export or reexport the SOFTWARE except as authorized by United States law and laws of the jurisdiction in which the SOFTWARE was obtained. In particular, but without limitation, none of the SOFTWARE may be used or otherwise exported or reexported (a) into (or to a national or resident of) a United States embargoed country or (b) to anyone on the U.S. Treasury Department's list of Specially Designated Nationals or the U.S. Department of Commerce's Table of Denial Orders. By using the SOFTWARE, you represent and warrant that you are not located in, under control of, or a national or resident of any such country or on any such list.

GOVERNMENT END USERS. If the SOFTWARE is supplied to the U. S. Government, the SOFTWARE is classified as "restricted computer software" as defined in clause 52.227-19 of the FAR. The U. S. Government's rights to the SOFTWARE are as provided in clause 52.227-19 of the FAR.

CONTROLLING LAW AND SEVERABILITY. This License shall be governed by the laws of the United States and the State of California. If for any reason a court of competent jurisdiction finds any provision,

or portion thereof, to be unenforceable, the remainder of this License shall continue in full force and effect.

REGULATORY COMPLIANCE

The Socket Mobile Scanning Companion is designed to be compliant with the rules and regulations in locations where they are sold and will be labeled as required. This product is type approved — users are not required to obtain license or authorization before using.

This product has been certified as conforming to technological standards. Therefore, the following actions are punishable by law:

- Disassembly or modification of this product
- Removal of identification labels on the back of the product

The frequency used by this product is also used by industrial, scientific and medical devices, such as microwave ovens, as well as wireless detectors for motion detectors, such as those requiring licenses used on manufacturing lines or similar radio transmitters (all of these wireless devices will be called “other wireless transmitters” below). Most modern electronic equipment (e.g., in hospitals and cars), is shielded from RF energy. However, certain electronic equipment is not.

1. Please ensure that all medical devices used in proximity to this device meet appropriate susceptibility specifications for this type of RF energy.
2. In the unlikely event that there is electronic interference between this system and other wireless transmitters, quickly change the location of operation or stop operating the unit (cease signal transmission).
3. If other electrical interference or related problems occur, contact Socket technical support at www.socketmobile.com/support/support

Federal Communication Commission Interference Statement

This equipment has been tested and found to comply with the limits for a Class B digital device, pursuant to Part 15 of the FCC Rules. These limits are designed to provide reasonable protection against harmful interference in a residential installation. This equipment generates, uses and can radiate radio frequency energy and, if not installed and used in accordance with the instructions, may cause harmful interference to radio communications. However, there is no guarantee that interference will not occur in a particular installation. If this equipment does cause harmful interference to radio or television reception, which can be determined by turning the equipment off and on, the user is encouraged to try to correct the interference by one of the following measures:

- Reorient or relocate the receiving antenna.
- Increase the separation between the equipment and receiver.
- Connect the equipment into an outlet on a circuit different from that to which the receiver is connected.
- Consult the dealer or an experienced radio/TV technician for help.

FCC Caution: Any changes or modifications not expressly approved by the party responsible for compliance could void the user's authority to operate this equipment.

This device complies with part 15 of the FCC rules. Operation is subject to the following conditions: (1) This device may not cause harmful interference, and (2) this device must accept any interference received, including interference that may cause undesired operation.

This equipment complies with FCC RF radiation exposure limits set forth for an uncontrolled environment. To maintain compliance with FCC RF exposure compliance requirements, please avoid direct contact to the transmitting antenna during transmitting.

This equipment is also ETS EN300 328-2, ETS EN301 489-1 and ETS EN301 489-17 compliant. These limits are designed to provide reasonable protection against harmful interference when the equipment is operated in a commercial environment.

This equipment generates and radiates radio-frequency energy. To comply with FCC RF exposure compliance requirements, the following antenna installation and device operating configurations must be satisfied: (1) Users are not permitted to make changes or modify the system in any way, and (2) connecting external antennas to the Scanning Companion is prohibited. This device and its antenna must not be co-located or operated with any other antenna or transmitter.

To comply with Industry Canada RF exposure compliance requirements, the following antenna installation and device operating configurations must be satisfied: "The installer of this radio equipment must ensure that the antenna is located or pointed such that it does not emit RF field in excess of Health Canada limits for the general population; consult Safety Code 6, available at Health Canada's website www.hc-sc.gc.ca/ehp/ehd/catalogue/rpb.htm"

If this equipment does cause harmful interference to radio or television reception, which can be determined by turning the

equipment off and on, the user may try to correct the interference by one or more of the following measures:

- Reorient or relocate the receiving antenna of the radio or television.
- Increase the distance separating the equipment and the receiver.
- Connect the equipment to an outlet on a different branch circuit than that of the receiver.
- Consult the dealer or an experienced radio/TV technician for help.

The user may find the following booklet helpful: *How to Identify and Resolve Radio-TV Interference Problems*. This booklet is available from the U.S. Government Printing Office, Washington, D.C. 20402.

NOTE: To comply with FCC and Industry Canada exposure requirements, this device is approved for operations in a user's hand when there is a distance of 20 cm or more between the device antenna and the user's body.

Industry Canada Statement

This device complies with RSS-210 of the Industry Canada Rules.

Operation is subject to the following two conditions:

- 1) this device may not cause interference and
- 2) this device must accept any interference, including interference that may cause undesired operation of the device

IMPORTANT NOTE:

IC Radiation Exposure Statement:

This equipment complies with IC radiation exposure limits set forth for an uncontrolled environment. End users must follow the specific operating instructions for satisfying RF exposure compliance. To maintain compliance with IC RF exposure compliance requirements, please follow operation instruction as documented in this manual.

Canada Certification

The marking of "IC:2529A-USB2" on the device means: "IC:2529A-USB2" is the certification number, and the term "IC" before the equipment certification number only signifies that Industry Canada technical specifications were met.

Radio Frequency Interference Requirements – Canada

This Class B digital apparatus meets the requirements of the Canadian Interference-Causing Equipment Regulations. Cet appareil numérique de la Classe B respecte toutes les exigences du Règlement sur le Matériel Brouilleur du Canada.

CE Marking & European Union Compliance

Products intended for sale within the European Union are marked with a CE Mark which indicates compliance to applicable Directives and European Normes (EN), as follows. Amendments to these Directives or ENs are included: Normes (EN), as follows:

Applicable Directives:

- Radio and Telecommunications Terminal Equipment Directive 1999/5/EC
- Low Voltage Directive 73/23/EEC

Applicable Standards:

- EN 55 022 – Limits and Methods of Measurement of Radio Interference Characteristics of Information Technology Equipment.
- EN 50 082-1 – Electromagnetic Compatibility – General Immunity Standard, Part 1: Residential, Commercial, Light Industry.
- IEC 801.2 – Electromagnetic Compatibility for Industrial Process Measurement and Control Equipment, Part 2: Electrostatic Discharge Requirements.
- IEC 801.3 – Electromagnetic Compatibility for Industrial Process Measurement and Control Equipment, Part 3: Radiated Electromagnetic Field Requirements.
- IEC 801.4 - Electromagnetic Compatibility for Industrial Process Measurement and Control Equipment, Part 4: Electrical Fast Transients Requirements
- EN 60 950 + Amd 1 + Amd 2 – Safety of Information Technology Equipment Including Business Equipment.

Product Disposal

Your device should not be placed in municipal waste. Please check local regulations for disposal of electronic products.



