



USER MANUAL

COOL / CL1001

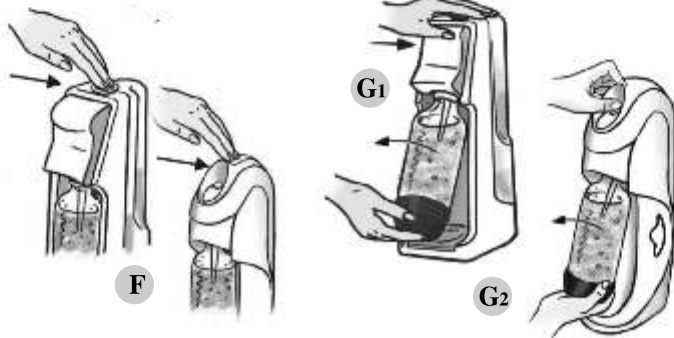
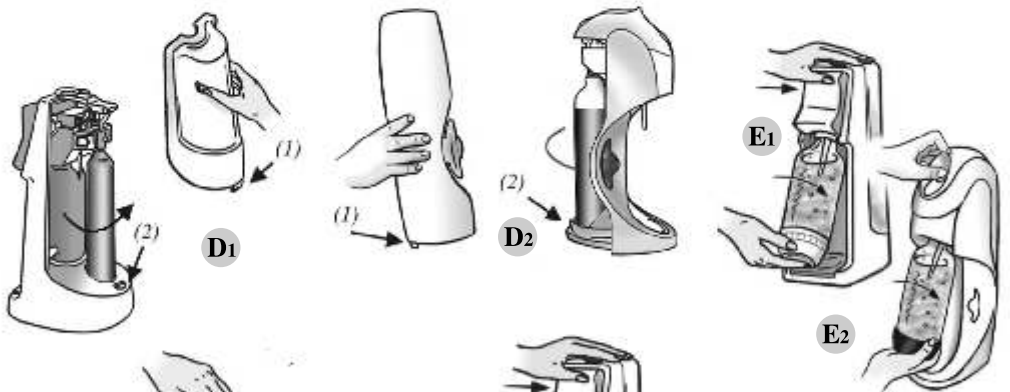
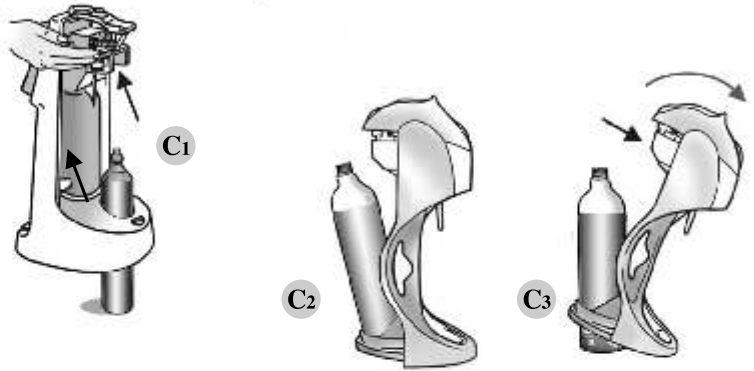
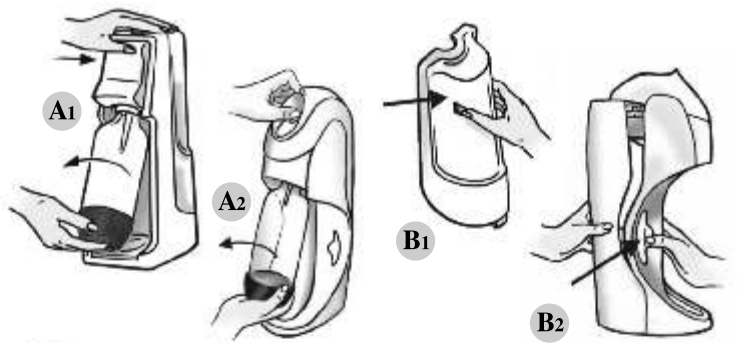
JET / STREAM / JET 100 / A200

DESIGN / DS5001

DY7001

www.sodastream.com

Getting started



Dear customer

Thank you for choosing to buy one of our quality drinksmakers. For fullest satisfaction please read the user instructions carefully. We are always happy to answer your questions, to contact your nearest Soda-Club/SodaStream office please visit www.sodaclub.com

PLEASE NOTE:

Before exchanging an empty Cylinder for a full one, please make sure to ask for a Soda-Club/SodaStream CO₂ Cylinder that fits your drinksmaker model. Do not try to fit a cylinder other than the type(s) suitable for your drinksmaker model, as indicated on your drinksmaker's package.

GETTING STARTED:

1. Press the tilt lever and remove the bottle from the drinksmaker (A1, A2).
2. Remove the back cover (B1, B2).
3. Remove the valve seal and cap from the cylinder valve. Insert the cylinder into the drinksmaker (C1, C2, C3) and screw it tightly into the cylinder holder (do not use any tools). Replace the back cover (D1, D2).
4. Fill the carbonating bottle with water to the fill line and chill.
5. Press the tilt lever and screw the bottle into the drinksmaker (E1,E2).
6. Press the carbonating button in short presses until you hear the buzz (release the button between presses). 3 buzzes will produce a standard fizz, additional presses will produce a stronger fizz.(F).
7. Press the tilt lever and unscrew the carbonating bottle to remove from the drinksmaker (G1, G2).

IMPORTANT: Carbonate only when the drinksmaker is in the upright position. Carbonate only drinking water, without any additives. Never carbonate an empty bottle.

YOU CAN CHOOSE FROM A VARIETY OF FLAVOURS

A wide range of flavours is available from Soda-Club/SodaStream, in bottles or in single servings. Please read mixing instructions on concentrate packaging labels before making drinks.

Store flavours in a cool dark place.

REPLACING A SODA-CLUB/SODASTREAM CYLINDER:

1. Remove the carbonating bottle from the drinksmaker.
2. Remove the rear-cover.
3. Unscrew the empty cylinder and remove from the drinksmaker .
4. Repeat step 3 of "Getting Started" above.

BEFORE CALLING FOR SERVICE

1. If your drinksmaker does not carbonate:

- If your cylinder is empty, exchange it. The weight of the full or empty cylinder is printed either on the cylinder or on its valve.
- Check that the carbonating bottle has been filled up to the fill line.
- Ensure that the drinksmaker is always in the upright position.

2. If your drinksmaker continues to release gas after the carbonating button has been released:

- DO NOT REMOVE THE CYLINDER OR THE BOTTLE. LEAVE THE DRINKSMAKER IN THE UPRIGHT POSITION AND DO NOT TOUCH THE DRINKSMAKER until escaping gas is no longer heard.
- When gas is no longer being released, tilt the carbonating bottle and remove. Unscrew the cylinder and return it to your supplier. Exchange the cylinder for a full one. Attention: the cylinder may be very cold.
- Discard the carbonating bottle that was fitted into the drinksmaker and replace it with a new one.
- In case of damage stop using the drinksmaker and contact the Customer Care Team in your country.

3. If a low hissing noise is heard from the drinksmaker during carbonation:

A slight hissing of gas may be heard when the drinksmaker is under pressure. This is quite normal and the noise will stop after carbonation when the bottle is tilted and the pressure is released.

4. If, when fitting a new cylinder, gas leaks after you have screwed the cylinder to the drinksmaker:

There may be a pressure leak between the cylinder holder and the cylinder valve.

Screw the cylinder tighter into its holder. If this does not help, remove the cylinder immediately and check if the rubber seal (a small black rubber ring) is in place. If it is missing or has slipped out of place, replace it. You can obtain spare seals from your local Customer Care Team.

5. If water over-flows from the carbonating bottle during carbonation:

Have you over filled the carbonating bottle? Check the fill line and empty excess water if necessary. Are you pressing the carbonating button for too long? Use short, firm presses only.

LOOKING AFTER YOUR SYSTEM

CARING FOR YOUR DRINKSMAKER

Wipe your drinksmaker with a soft damp cloth. Do not wash in a dishwasher. Do not place or store the drinksmaker close to a heat source. Keep dry the drip tray at the bottom of the drinksmaker. The drip tray can be removed for cleaning if desired.

CARING FOR YOUR SODA-CLUB/SODASTREAM CARBONATING BOTTLES



The carbonating bottles designed for your drinksmaker have a screw style fitting.

Please ensure that all extra bottles purchased have a screw type fitting. Do not use any carbonating bottles which are not approved by Soda-Club/SodaStream for use in your drinksmaker model, including, inter alia, bottles made by other manufacturers or bottles made of glass.

After every use, rinse your carbonating bottle with lukewarm tap water with or without soap. For easy cleaning you may remove the base cup of the bottle by pulling the base downwards. Replace the base cup by pressing it onto the bottle from the bottom. Always refill immediately with fresh cold drinking water and then place in the refrigerator for pre-chilled drinks. Do not allow materials such as ammonia, alcohol or benzene based substances to come into contact with the bottle, as these may distort it.

Soda-Club/SodaStream Carbonating Bottles can be damaged by extremes of heat or cold (above 50°C or below 1°C) - never wash your bottle or its cap in the dishwasher, do not leave close to a direct heat source (oven or radiator) or in the car and do not place in the freezer.



Certain types of Soda-Club/SodaStream carbonating bottles may be placed in the dishwasher (once a week – up to 70°C or Eco cycle) for cleaning. Look for the “dishwasher safe” indication on the bottle to know whether the bottle may or may not be placed in the dishwasher.

Check bottle caps occasionally for wear or cracks.

WARNING:

Every Soda-Club/SodaStream Carbonating Bottle carries an expiry date – DO NOT use a bottle once this date has passed.

Soda-Club/SodaStream Carbonating Bottles are subjected to stringent quality tests and with normal usage should reach their expiry date with ease. If, however, you notice that your bottle has become worn, scratched, discoloured, lost its transparency or shape or was damaged, DO NOT use it in your drinksmaker any longer. Please discard the bottle immediately and replace it with a new one.

Never take the bottle out during carbonation.

SODA-CLUB/SODASTREAM CYLINDERS

The Soda-Club/SodaStream Cylinders are not for sale. These Cylinders are the property of Soda-Club (CO₂) Ltd. or its affiliate as indicated on the cylinder and the User Certificate attached to the cylinder. The Soda-Club/SodaStream Cylinder is transferred to you temporarily, subject to the terms of the Certificate, only for the specific purpose of carbonating water by means of a suitable drinksmaker.

When the cylinder is empty, exchange it for a full Soda-Club/SodaStream Cylinder at an authorised Soda-Club/SodaStream Retailer for the price of the gas refill only.

Warning: Store cylinders in a cool place. Exposure to heat will cause the pressure in the cylinder to rise. As a safety precaution, the cylinder will expel the CO₂ if the pressure inside the cylinder becomes too high. If this should happen, do not touch the cylinder, simply leave it until all the gas has escaped. In such case, quick release of CO₂ causes the cylinder to become extremely cold. Do not touch the cylinder until it has warmed to room temperature.

NEVER TRANSPORT THE DRINKSMAKER WITH THE CYLINDER IN PLACE.

DO NOT TAMPER WITH THE CYLINDER.

WARRANTY

Great care has been taken to ensure that your drinksmaker is delivered to you in perfect condition.

However, if a fault should occur during a 24 months period following the date of purchase (please keep the receipt) due to faulty workmanship or inferior raw materials, we will either repair or replace (at our discretion) your drinksmaker free of charge.

Even if the fault has occurred due to misuse, we remain at your service but of course we would then request payment for the repair, which can be arranged through an authorised Soda-Club/SodaStream Retailer or your customer care team. The efficient repair or service of the drinksmaker cannot be guaranteed to be carried out by any other party, and therefore, for the warranty to retain its validity, please arrange such repair or service through an authorised Retailer or customer care team.

If you have any questions, please call our Customer Care Team.

Soda-Club/SodaStream carbonating bottles

Your drinksmaker has been designed to operate with a suitable Soda-Club/SodaStream Carbonating Bottle (screw style fitting). It is not guaranteed to operate efficiently with any other bottle, and therefore for the warranty to retain its validity please use only original Soda-Club/SodaStream Carbonating Bottles in your drinksmaker.

Soda-Club/SodaStream cylinders

Your drinksmaker has been designed to operate with a suitable Soda-Club/SodaStream Cylinder, as explained in the instructions in this manual. It is not guaranteed to operate efficiently with other cylinders, and therefore for the warranty to retain its validity please use only a suitable Soda-Club/SodaStream Cylinder filled by an authorised Soda-Club/SodaStream filling station, available from authorised Soda-Club/SodaStream Retailers.

All Soda-Club/SodaStream products are subject to continuous development and specifications may change without notice.

MACHINE RATING

Maximum working pressure: 10 Bar / 145 Psi. Maximum allowed operating temperature: 40°C/104°F. Bottle capacity at fill line will be in the range of 400 ml - 1.0 liter (varies by machine pack, may differ from images shown). Brimful bottle capacity will be in the range of 480 ml - 1.1 liter.