

User manual of SLT-SYT100-1M

Touch screw remote control

Thanks for choosing the wireless lamp products. In order to be better to use the product, please read this operation instruction seriously.

The Touch screw remote control adopts the latest RF technology and digital identification technology, which makes the products stable and high performance, as well make the system very easy to know which one is in need of service.

Technical data

Working frequency: 433.92MHz

Working voltage: DC6V (CR2032 x 2)

Standby current: <30uA

Working current: ≤ 10mA

Encoding mode: learning code

Working temperature: -10~+50°C

Product size: 86 × 86 × 10mm

Diagram

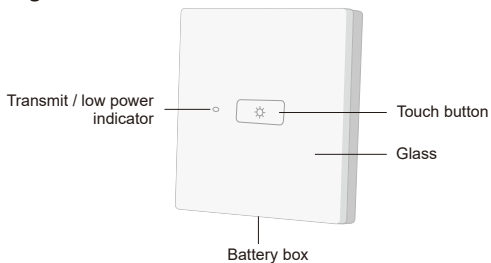


Figure 1

Installation

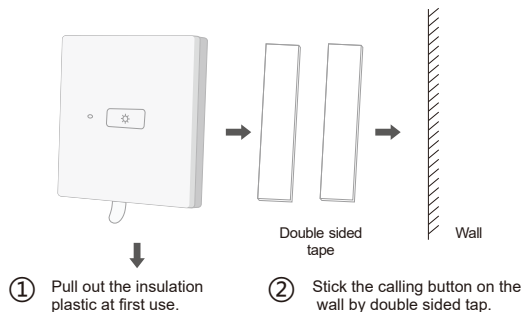


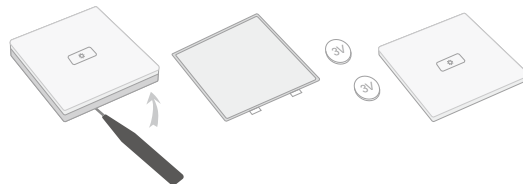
Figure 2

Usage method

 Press the button, the light on, press again, the light off.

Change battery

- (1) Put the screwdriver into the disassemble port and push it up.
- (2) Take out the upper part of the caller from the bottom
- (3) Change the battery.



Note: the pairing method, please refer to the user manual of lamp.

NOTE: This equipment has been tested and found to comply with the limits for a Class B digital device, pursuant to Part 15 of the FCC Rules. These limits are designed to provide reasonable protection against harmful interference in a residential installation. This equipment generates, uses and can radiate radio frequency energy and, if not installed and used in

accordance with the instructions, may cause harmful interference to radio communications. However, there is no guarantee that interference will not occur in a particular installation. If this equipment does cause harmful interference to radio or television reception, which can be determined by turning the equipment off and on, the user is encouraged to try to correct the interference by one or more of the following measures:

-- Reorient or relocate the receiving antenna. -- Increase the separation between the equipment and receiver.

-- Connect the equipment into an outlet on a circuit different from that to which the receiver is connected.

-- Consult the dealer or an experienced radio/TV technician for help.

The device has been evaluated to meet general RF exposure requirement. The device can be used in portable exposure condition without restriction. This device and its antenna(s) must not be co-located or operation in conjunction with any other antenna or transmitter.

Caution: Any changes or modifications not expressly approved by the party responsible for compliance could void the user's authority to operate the equipment.