



KEYTIS INTERIOR

EN Instructions

Ref. 5124979A

HOME MOTION by
somfy

Somfy SAS
50 avenue du Nouveau
Monde
F-74300 CLUSES

www.somfy.com

HOME MOTION by
somfy

Somfy SAS, capital 20.000.000 Euros,
FCS Annecy 303.970.230 -09/2014

EN Safety and liability

Before installing and using this product, please read this guide carefully.

This Somfy product must be installed by a home motorisation and automation professional, for whom this guide is intended. Moreover, the installer must comply with standards and legislation in the country in which the product is being installed, and inform his customers of the operating and maintenance conditions for the product.

Any use outside the sphere of application defined by Somfy is prohibited. In this event, as with all usage not consistent with these instructions, Somfy accepts no liability and the Somfy warranty is invalidated.

Before beginning installation, check that this product is compatible with the associated equipment and accessories.

Safety instructions



Keep the Keytis interior out of the reach of children.



Never drop, knock drill or submerge the Keytis interior.



Do not use abrasive products or solvents to clean the product.



Ensure batteries are separated from other types of waste and are recycled via your local recycling centre.

FCC STATEMENTS

This portable transmitter with its antenna complies with FCC/IC RF exposure limits for general population / uncontrolled exposure.

Compliance Statement (Part 15.19)

This device complies with Part 15 of the FCC Rules. Operation is subject to the following two conditions:

1. This device may not cause harmful interference, and
2. This device must accept any interference received, including interference that may cause undesired operation.

Warning (Part 15.21)

Changes or modifications not expressly approved by the party responsible for compliance could void the user's authority to operate the equipment.

FCC Interference Statement (Part 15.105 (b))

This equipment has been tested and found to comply with the limits for a Class B digital device, pursuant to Part 15 of the FCC Rules. These limits are designed to provide reasonable protection against harmful interference in a residential installation. This equipment generates uses and can radiate radio frequency energy and, if not installed and used in accordance with the instructions, may cause harmful interference to radio communications. However, there is no guarantee that interference will not occur in a particular installation. If this equipment does cause harmful interference to radio or television reception, which can be determined by turning the equipment off and on, the user is encouraged to try to correct the interference by one of the following measures:

- Reorient or relocate the receiving antenna.
- Increase the separation between the equipment and receiver.
- Connect the equipment into an outlet on a circuit different from that to which the receiver is connected.
- Consult the dealer or an experienced radio/TV technician for help.

EN Safety and liability

Before installing and using this product, please read this guide carefully.

This Somfy product must be installed by a home motorisation and automation professional, for whom this guide is intended. Moreover, the installer must comply with standards and legislation in the country in which the product is being installed, and inform his customers of the operating and maintenance conditions for the product.

Any use outside the sphere of application defined by Somfy is prohibited. In this event, as with all usage not consistent with these instructions, Somfy accepts no liability and the Somfy warranty is invalidated.

Before beginning installation, check that this product is compatible with the associated equipment and accessories.

Safety instructions



Keep the Keytis interior out of the reach of children.



Never drop, knock drill or submerge the Keytis interior.



Do not use abrasive products or solvents to clean the product.



Ensure batteries are separated from other types of waste and are recycled via your local recycling centre.

FCC STATEMENTS

This portable transmitter with its antenna complies with FCC/IC RF exposure limits for general population / uncontrolled exposure.

Compliance Statement (Part 15.19)

This device complies with Part 15 of the FCC Rules. Operation is subject to the following two conditions:

1. This device may not cause harmful interference, and
2. This device must accept any interference received, including interference that may cause undesired operation.

Warning (Part 15.21)

Changes or modifications not expressly approved by the party responsible for compliance could void the user's authority to operate the equipment.

FCC Interference Statement (Part 15.105 (b))

This equipment has been tested and found to comply with the limits for a Class B digital device, pursuant to Part 15 of the FCC Rules. These limits are designed to provide reasonable protection against harmful interference in a residential installation. This equipment generates uses and can radiate radio frequency energy and, if not installed and used in accordance with the instructions, may cause harmful interference to radio communications. However, there is no guarantee that interference will not occur in a particular installation. If this equipment does cause harmful interference to radio or television reception, which can be determined by turning the equipment off and on, the user is encouraged to try to correct the interference by one of the following measures:

- Reorient or relocate the receiving antenna.
- Increase the separation between the equipment and receiver.
- Connect the equipment into an outlet on a circuit different from that to which the receiver is connected.
- Consult the dealer or an experienced radio/TV technician for help.

EN Safety and liability

Before installing and using this product, please read this guide carefully.

This Somfy product must be installed by a home motorisation and automation professional, for whom this guide is intended. Moreover, the installer must comply with standards and legislation in the country in which the product is being installed, and inform his customers of the operating and maintenance conditions for the product.

Any use outside the sphere of application defined by Somfy is prohibited. In this event, as with all usage not consistent with these instructions, Somfy accepts no liability and the Somfy warranty is invalidated.

Before beginning installation, check that this product is compatible with the associated equipment and accessories.

Safety instructions



Keep the Keytis interior out of the reach of children.



Never drop, knock drill or submerge the Keytis interior.



Do not use abrasive products or solvents to clean the product.



Ensure batteries are separated from other types of waste and are recycled via your local recycling centre.

FCC STATEMENTS

This portable transmitter with its antenna complies with FCC/IC RF exposure limits for general population / uncontrolled exposure.

Compliance Statement (Part 15.19)

This device complies with Part 15 of the FCC Rules. Operation is subject to the following two conditions:

1. This device may not cause harmful interference, and
2. This device must accept any interference received, including interference that may cause undesired operation.

Warning (Part 15.21)

Changes or modifications not expressly approved by the party responsible for compliance could void the user's authority to operate the equipment.

FCC Interference Statement (Part 15.105 (b))

This equipment has been tested and found to comply with the limits for a Class B digital device, pursuant to Part 15 of the FCC Rules. These limits are designed to provide reasonable protection against harmful interference in a residential installation. This equipment generates uses and can radiate radio frequency energy and, if not installed and used in accordance with the instructions, may cause harmful interference to radio communications. However, there is no guarantee that interference will not occur in a particular installation. If this equipment does cause harmful interference to radio or television reception, which can be determined by turning the equipment off and on, the user is encouraged to try to correct the interference by one of the following measures:

- Reorient or relocate the receiving antenna.
- Increase the separation between the equipment and receiver.
- Connect the equipment into an outlet on a circuit different from that to which the receiver is connected.
- Consult the dealer or an experienced radio/TV technician for help.

EN 1) PROGRAMMING THE CONTROL POINT

Remove the clip (fig1)

Use a screwdriver to make a short contact (less than 2s) on the "prog band" (fig 2) located at the back of remote control. The motorised product moves up and down. The control point is programmed in the motor.

2) USE

Press the **Up** button to move the motorised product to the up end limit and the **Down** button to stop the motorised product before it reach the up end limit.

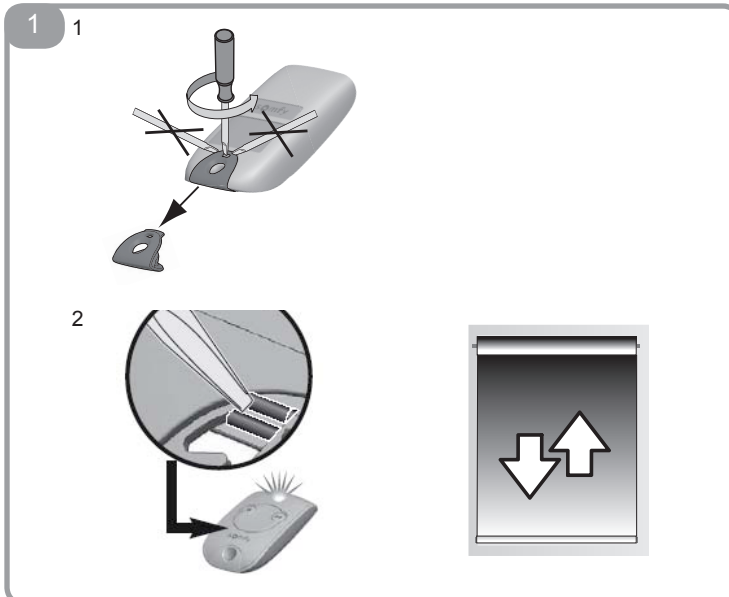
Press the **Down** button to move the motorised product to the down end limit and the **Up** button to stop the motorised product before it reach the down end limit.

3) BATTERY REPLACEMENT:

To change the battery, see pictures 1 to 8.

4) TECHNICAL DATA

Frequency bands and maximum power used:	433,42 MHz e.r.p < 63 µW
Operating temperature:	-20°C to + 60°C
Power supply:	1 x 3V battery type CR 2032
Protection rating	IP 40



EN 1) PROGRAMMING THE CONTROL POINT

Remove the clip (fig1)

Use a screwdriver to make a short contact (less than 2s) on the "prog band" (fig 2) located at the back of remote control. The motorised product moves up and down. The control point is programmed in the motor.

2) USE

Press the **Up** button to move the motorised product to the up end limit and the **Down** button to stop the motorised product before it reach the up end limit.

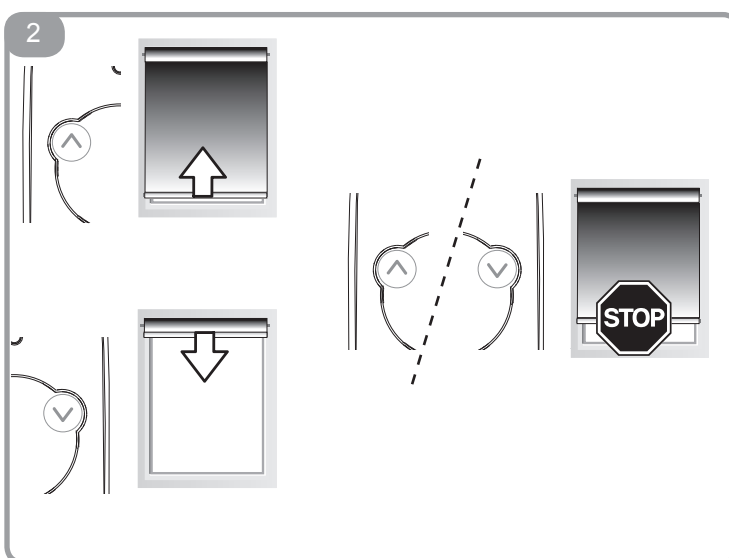
Press the **Down** button to move the motorised product to the down end limit and the **Up** button to stop the motorised product before it reach the down end limit.

3) BATTERY REPLACEMENT:

To change the battery, see pictures 1 to 8.

4) TECHNICAL DATA

Frequency bands and maximum power used:	433,42 MHz e.r.p < 63 µW
Operating temperature:	-20°C to + 60°C
Power supply:	1 x 3V battery type CR 2032
Protection rating	IP 40



EN 1) PROGRAMMING THE CONTROL POINT

Remove the clip (fig1)

Use a screwdriver to make a short contact (less than 2s) on the "prog band" (fig 2) located at the back of remote control. The motorised product moves up and down. The control point is programmed in the motor.

2) USE

Press the **Up** button to move the motorised product to the up end limit and the **Down** button to stop the motorised product before it reach the up end limit.

Press the **Down** button to move the motorised product to the down end limit and the **Up** button to stop the motorised product before it reach the down end limit.

3) BATTERY REPLACEMENT:

To change the battery, see pictures 1 to 8.

4) TECHNICAL DATA

Frequency bands and maximum power used:	433,42 MHz e.r.p < 63 µW
Operating temperature:	-20°C to + 60°C
Power supply:	1 x 3V battery type CR 2032
Protection rating	IP 40

