

SONIC | bliss.

TENTATIVE



bliss™



Bliss miniBTE User Guide

SONIC  
Everyday Sounds Better

**Hearing Instrument Serial Number:**

Left \_\_\_\_\_ Right \_\_\_\_\_

**Hearing Instrument Model:**

Left \_\_\_\_\_ Right \_\_\_\_\_

**Battery Size: 13A**

**Listening  
Program #**

**Listening  
Environment**

1 \_\_\_\_\_

2 \_\_\_\_\_

3 \_\_\_\_\_

4 \_\_\_\_\_

**Right/Left Instruments Synchronized:**

Active       Inactive

**Program Button:**

Active       Inactive

**Program Button Mute:**

Active       Inactive

**Preferred Telephone Ear:**

Right       Left       Both

**Non-Telephone Ear Control**

No change

Softer when telephone is in use

Mutes when telephone is in use

The following hearing instruments are covered in this User Guide:

## Bliss miniBTE



BL100 MN  
BL80 MN



---

## Table of Contents

---

Congratulations on Your Purchase!	09
General Warnings and Safety Guidelines	10
Hearing Expectations	15
Your Bliss miniBTE Hearing Instrument – with Thin Tube	18
Your Bliss miniBTE Hearing Instrument – with Earhook and Earmold	19
Turning Your Hearing Instrument OFF and ON	20
Putting On Your Hearing Instrument – Thin Tube	21
Taking Off Your Hearing Instrument – Thin Tube	22
Putting On Your Hearing Instrument – Earhook	23
Taking Off Your Hearing Instrument – Earhook	24
Changing the Programs	25
Changing the Volume	27
Using the Telephone	28
Changing the Battery	32
Audible Indicators	36
Safety Lock	37

---



---

Data Logging and Learning	38
Direct Audio Input and FM	39
Caring for Your Hearing Instruments	42
Operating Your Bliss miniBTE with the RC-P Remote Control	47
Operating Your Bliss miniBTE with the SoundGate Communication Device	48
Environmental Protection	49
Product Approval, Markings and Compliance	52
Cell Phone and Hearing Instrument Compatibility	52
Warranty and Repairs	54
Accessories	55
Common Problems and Solutions	56
Information for the Hearing Care Provider	60
Compliance with Requirements for Europe	62
Compliance with Radio Communications Requirements for the USA and Canada	63
Information and Explanation of Symbols	66
Service	68





## **Congratulations On Your Purchase!**

**With a little practice, you will soon be on your way to better hearing. The amplification of sound provided by your hearing instruments was adjusted by your hearing care provider to the needs of your individual hearing loss.**

---



Please read the entire contents of this booklet before using your hearing instruments. It contains instructions and important information about the use and handling of your hearing instruments and batteries. With proper use and care, your hearing instruments will improve your connection with the world around you.





## General Warnings and Safety Guidelines







---

Hearing instruments and batteries can be dangerous if swallowed or improperly used. Such actions can result in severe injury, permanent hearing loss or even fatality.

Familiarize yourself completely with the following general warnings and safety guidelines before using your hearing instruments.

### Hazard Warnings

-  Never allow others to wear your hearing instruments. They are adjusted for your hearing requirements and may permanently damage another person's hearing.
-  Avoid wearing your hearing instrument while playing contact sports (e.g. rugby, football etc.), since a strike to the ear could be harmful.
-  Hearing instruments, their parts and batteries should be kept out of reach of infants, children and anyone who might swallow these items or otherwise cause themselves injury.
-  Take care when changing and discarding batteries to keep them out of reach of infants, children, persons of mental incapacity or pets.

- 
-  Clean your hearing instruments and their parts on a regular basis as recommended. Micro-organisms from unclean instruments may cause skin irritations.
  -  Be careful with leaking battery liquid, as it is a hazardous substance.
  -  Never attempt to recharge non-rechargeable batteries.
  -  Be aware of the possibility that your hearing instruments may stop functioning without notice. Keep this in mind while you circulate in traffic or otherwise depend on warning sounds.
  -  Remove your instruments before applying aftershave, hairspray, oils, perfume, mosquito repellent, lotions, etc. Allow the product to dry before wearing your instruments.
  -  Traffic or other warning sounds may be reduced in level by a directional microphone when these sounds are coming from behind you.

**Warning to Hearing Care Provider and Patient**

Special care should be taken when fitting and using a hearing instrument with maximum sound pressure capability in excess of 132 dB SPL IEC 60318-4 since there may be a risk of impairing the remaining hearing of the patient.

**Warning to Hearing Care Provider and Patient**

When the DAI is connected to AC-powered equipment, this equipment must comply with IEC-60601 or equivalent safety standards.

---

## Safety Information

- Hearing instruments should be used only as directed and adjusted by your trained hearing care provider. Misuse or improper adjustments can result in sudden and permanent hearing loss.
- Never put your hearing instrument or batteries in your mouth, as they could easily be swallowed
- Keep batteries away from medications, since they can easily be mistaken for pills
- In the event that a battery or hearing instrument is swallowed, see a doctor immediately
- Be aware that use of a hearing instrument may cause excess earwax to build up in the ear canal which may require removal by a trained medical professional
- Consult your physician if excessive earwax, skin irritation, or a foreign object prevents you from wearing your hearing instrument
- An earmold is a custom-made product. If you experience discomfort or irritation of your ear, please see your hearing care provider immediately for modification of the earmold.
- In rare cases, a hearing instrument or earmold may cause a discharge from the ear or allergic reaction. See a physician immediately if these conditions occur.

- Never insert cleaning tools into the microphone inlet or deeply into the sound outlet. This could damage the hearing instruments.
- Do not expose hearing instruments to extreme heat by leaving them in the car, near a radiator, etc.
- Avoid exposing your instruments to water and moisture i.e. steambaths, showers, heavy rain, etc.
- Never attempt to dry your instruments with a hair dryer, microwave oven, etc.
- It is recommended to remove your hearing instruments before sleeping
- Protect your instruments by keeping them in the case when you are not wearing them

## Hearing Expectations

---

### Set Appropriate Expectations

It is important that you have the right expectations regarding your hearing instruments. Hearing instruments will give you better hearing, but they are not a cure for hearing loss.

People whose expectations are too high (“I thought they would make my hearing normal”) are likely to be disappointed and may give up.

### Hearing Instruments Can:

- Help you hear and understand better in most situations
- Allow you to participate more in group situations and meetings

### Hearing Instruments Cannot:

- Give you normal hearing

### Hearing Instruments May Not:

- Let you hear very soft sounds
- Block ALL background noises – especially in noisy situations. Even people without hearing loss may have difficulty hearing in the presence of background noise.

## **Be Patient**

Unlike with eyeglasses which correct your vision as soon as you first put them on, with hearing instruments you will need some time to adjust.

It may take several weeks or months to completely adjust to your hearing instruments, so try to be patient. Initially, try different listening situations, such as one-on-one conversations with family and friends and conversations with two or three people at home or in quiet settings. Also, try having conversations in noisier places like parties, restaurants, meetings, and outdoors.

Do not forget that some situations are simply too noisy in general – even for people without hearing loss. So do not get discouraged.



Consistent use of your hearing instrument is strongly recommended. In most cases, infrequent use does not allow you to obtain the full benefit from your device.

The use of a hearing instrument is only a part of total hearing rehabilitation, and may need to be supplemented by auditory training and instruction in lipreading.

## Your Bliss miniBTE Hearing Instrument – with Thin Tube



1 Rear Microphone

2 Program Button

3 Sound Outlet

4 Dome

5 Retention Lock

6 Battery Door

7 Thin Tube

8 Thin Tube Adapter

9 Front Microphone

### Left/Right Ear Marking

A color indicator can help you distinguish left and right instruments.

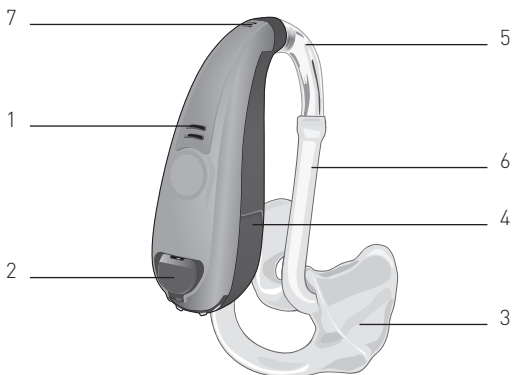
Red = right

Blue = left



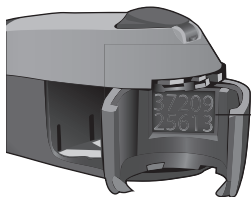
## Your Bliss miniBTE Hearing Instrument – with Earhook and Earmold

---



- 1 Rear Microphone
- 2 Program Button
- 3 Earmold
- 4 Battery Door

- 5 Earhook
- 6 Earmold Tubing
- 7 Front Microphone



Serial Number

## Turning Your Hearing Instrument OFF and ON

---

Before turning your hearing instrument off, wipe away any moisture with a soft cloth. To turn your hearing instrument off, open the battery door slightly by pushing on the edge of the seam. To turn it back on, fully close the battery door.

Your hearing instrument may be programmed to alert you with a beep when it is turned on. Your hearing care provider will tell you if this feature is enabled. Your hearing instrument may also have a “power on” delay. This allows you to insert the device before it is fully active.

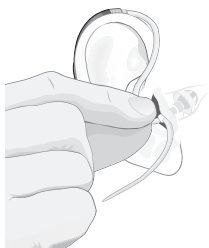
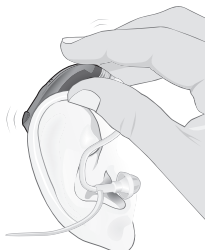
To prolong battery life, turn off your hearing instrument when not in use.



## Putting On Your Hearing Instrument – Thin Tube

---

- First, position the hearing instrument over the top of your ear
- Grasp the bend of the Thin Tube and gently push the sound dome into your ear canal until the tube rests against the side of your head. When the sound dome is placed appropriately, you should not be able to see the Thin Tube sticking out when you look directly into a mirror. If the Thin Tube is sticking out from your ear, insert the dome further.
- Use your finger to push the retention lock comfortably into the bowl of your ear



## Taking Off Your Hearing Instrument – Thin Tube

---

To remove your hearing instrument, hold the Thin Tube and gently pull the sound dome out of your ear canal.

- Lift the hearing instrument case from behind your ear
- Open the battery compartment to turn off the device



### Note!

Do not remove the instrument by pulling on the hearing instrument case. This might disconnect the device from the Thin Tube.

Should the sound dome become separated from the Thin Tube and remain lodged in your ear canal after removal of the hearing instrument, **do not** attempt to remove the sound dome yourself. Seek immediate care from your hearing care provider or physician.

## Putting On Your Hearing Instrument – Earhook

---

- Start with the miniBTE hearing instrument and earmold for your left ear. Connect the earmold to the hearing instrument by pushing the hearing instrument's earhook into the tube on the earmold.
- Once the two are connected, hold the earmold with your thumb and first finger. Gently guide it into your ear canal.
- Gently pulling down on your ear lobe with your other hand may help. A slight twist may be needed to fit the earmold in your ear.
- When the earmold is in your ear, place the hearing instrument behind the top part of your ear. Do the same thing with the right hearing instrument and earmold.



## Taking Off Your Hearing Instrument – Earhook

---

To take your hearing instrument off, hold the earmold with your thumb and first finger. Gently pull it out of your ear canal.

A slight twist may be needed to remove it. Do not pull on the tube, as it may come out of the earmold. Once the earmold is out of your ear, remove the hearing instrument from behind your ear.



### **Note!**

Even though they look the same, hearing instruments are programmed to fit a specific ear (right or left). Make sure the correct hearing instrument is used with the correct earmold. Refer to the right/left color indicator on page 18.



## Changing the Programs

---

Your hearing instrument can be configured with multiple listening programs. Please see inside the front cover of this User Guide to find out which program(s) have been configured by your hearing care provider. You can change programs as follows:

### Program Button

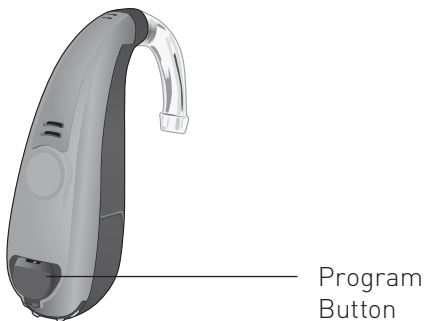
A short press (about 2 seconds) on the program button will cause the listening program to change. You will hear the same number of beeps as the program you are in each time you push the button. When you turn the hearing instrument off and then on, it will automatically return to your default listening program (program 1).

### RC-P Remote Control or SoundGate (optional accessories)

The listening program can be changed with either of these devices. Please see pages 47 and 48 for instructions.

## Program Button Mute

A longer press (about 5 seconds) on the program button will cause the hearing instrument to mute, no matter which program you are in. Press the button again to un-mute the device.



### **Note!**

Your hearing care provider can customize the behavior of the program button. Please see inside the front cover to find out how your control may have been configured.

## Changing the Volume

---

Your hearing instruments are programmed to be at a comfortable volume level for your hearing loss. They are designed to automatically adjust to changes in the sound environment.

If you have purchased an optional RC-P remote control or SoundGate accessory, you can use it to make small volume changes to get a natural and comfortable sound. Please see pages 47 and 48 for further instructions.



### Note!

If the default volume of your hearing instrument is too loud or soft, your hearing care provider may need to make changes to your listening program.



### Note!

Your hearing instruments automatically return to a pre-set loudness level when they are powered on, when the battery is low, or when the program is changed. If you find that you frequently need to turn the volume up or down, your hearing care provider may need to adjust your settings.

## Using the Telephone

---

Your hearing instrument may be programmed with a dedicated Telephone program. Your hearing care provider can configure your hearing instruments to allow answering the phone on both ears or on your preferred ear. Please see inside the front cover to find out if this was configured.

### Auto Telephone

Additionally, your hearing instrument has an optional Auto Telephone feature. When the hearing instrument is close to a telephone receiver, the Auto Telephone will activate your telephone listening program. When you end your conversation, the hearing instrument will automatically return to the previous listening program.

If you have a preferred ear, the hearing instrument on the opposite side can be programmed to sound softer or mute. Ask your hearing care provider if this option has been selected for you.

**Note!**

Some telephones may need a special magnet added to help engage the Auto Telephone feature. To mount the magnet onto your telephone, please follow the instructions included in the magnet's packaging or contact your hearing care provider.



## Phone Usage Tips

- Hold the receiver close to the microphone inlet of your hearing instrument. If this causes whistling, move the receiver away a small distance.
- Before purchasing a mobile phone, test it with your hearing instrument
- People with a greater degree of hearing loss may need a volume control on the telephone



### **Note!**

If your hearing instrument has been configured without these options, select the program that is best for you when using the telephone. Then position the phone lightly against your ear as described above.

---

## Magnet Warning

- Keep magnets out of reach of children and pets
- If a magnet is swallowed, see a doctor immediately
- Do not place the magnet in a shirt pocket and keep it 1 ft (30 cm) away from pacemakers and other active implants
- Use the magnet on the opposite side from active implantable devices

## Changing the Battery

---

When the battery power level is low, your hearing instrument will beep at regular intervals. You should be prepared to replace the battery. The time until the hearing instrument stops working depends on the battery type and manufacturer. Mercury-free batteries generally cause earlier warning beeps.

### Change Batteries Regularly

When your battery needs to be changed you will hear three beeps: a low tone, followed by a high tone and another low tone. The exact battery life you experience may vary, but you should expect approximately 200 hours of total hearing instrument use per battery.

**Note!**

Never force the battery door open or closed.



## Battery Type

Stainless steel zinc-air batteries are recommended. Your hearing instrument uses a #13A battery.

### Remove the Old Battery:

- Open the battery compartment by pushing either side of the compartment with your fingernail
- Rotate the compartment until the opening in the battery retaining ring points directly away from the body of the hearing instrument
- Remove the battery by lifting the exposed edge of the battery out of the retaining ring



The battery may spring out of the retaining ring. Be careful not to lose it.

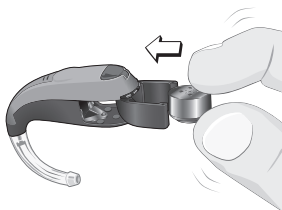
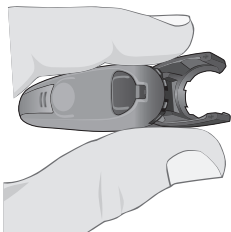


#### Note!

The battery may spring out of the retaining ring. Be careful not to lose it.

### Insert a New Battery:

- Grasp the hearing instrument with your thumb and forefinger on either side of the open battery compartment to keep the compartment from moving
- Insert a new battery by pushing it securely into the opening of the retaining ring
- Once the battery snaps firmly in the retaining ring, rotate the retaining ring back into the battery compartment
- Cup your hand around the hearing instrument. A whistling or squealing sound means the battery is working.



## Important Battery Information

- Battery life will vary with conditions of use (for example, batteries will run down faster in noisy environments)
- Always keep spare batteries on hand
- A used battery should be replaced immediately
- If you are not going to use your hearing instruments for a few days, remove the batteries
- Any moisture found on a battery should be wiped off immediately with a soft cloth
- Always remove zinc-air batteries before drying your hearing instrument with a drying kit. Drying out zinc-air batteries shortens their lifetime.
- Used batteries should be returned to your battery supplier or hearing care provider for safe disposal
- Never dispose of batteries by burning them. They may explode and cause injury.
- Never dispose of batteries with household waste. They cause environmental pollution.
- Batteries can be harmful if swallowed. Keep batteries out of the reach of pets and small children. In case of ingestion, contact your physician immediately.

## Audible Indicators

Event	Tone Description
Start Up Delay	Configurable short, medium or long delay before amplification starts
Power On	A sustained beep when amplification starts
Listening Program Change*	One to four single beeps; Number of beeps matches listening program position
Low Battery	Three warning beeps in a low-high-low pitch sequence
Power Down; Dying Battery	A fast sequence of beeps descending in pitch

## Audible Indicators with Optional SoundGate/RC-P

Volume Control Click*	Brief click to indicate volume is turning up or down
Volume Control Limit*	Rapid double beep at both maximum and minimum levels
SoundGate Incoming Call*	Telephone ringing signal

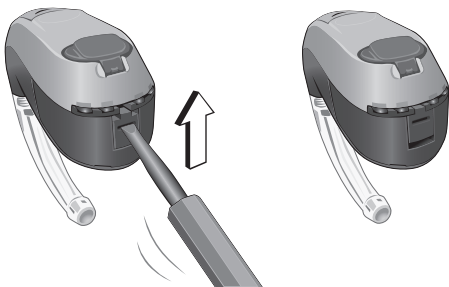
\* Audible indicators can be heard in the opposite hearing instrument if the Volume Control and Program Change Synchronize feature is activated in the fitting software. Refer to the Owner Information in the inside cover to see how your devices are configured.

## Safety Lock

---

As an added safety feature, your battery door has been designed with a locking mechanism to deter children from accessing the battery.

With the battery door fully closed, use a small screwdriver or similar tool to slide the lock up into the slot. This will prevent the battery door from opening until you slide it back down again.



## Data Logging and Learning

---

### Data Logging

The data log automatically stores information about your use of your hearing instruments such as program changes, hours of wear, etc. This information can be used by your hearing care provider to adjust your hearing instruments. If you do not want this feature to be active, please ask your hearing care provider to turn it off.

### Data Learning (Bliss<sup>100</sup>)

If you have purchased a remote control or a SoundGate your hearing care provider may have activated data learning. When data learning is operating, the hearing instrument keeps track of how often and how much you adjust the volume and “learns” your preferred setting. This new setting can be made permanent during your follow-up visit.

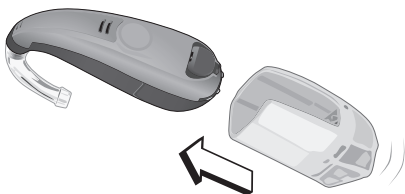
## Direct Audio Input and FM

---

A Direct Audio Input (DAI) adapter allows your hearing instrument to receive signals directly from external sources such as TV, personal stereos, etc. An FM receiver allows your instrument to receive signals directly from an external wireless FM transmitter.

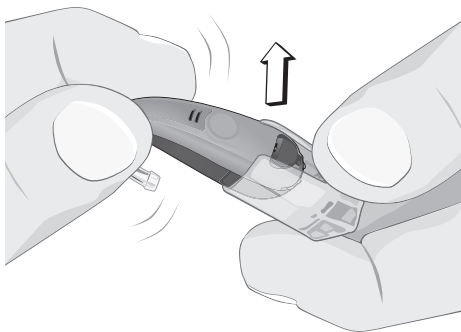
### Attaching the DAI Boot

- Slip the DAI boot over your miniBTE, as shown. When it is fully seated you will feel it click into place.
- Insert the DAI/Euro plug or FM Receiver of the assistive listening device into the DAI boot



## Removing the DAI Boot

- Disconnect the DAI/Euro plug or FM Receiver of the assistive listening device from the DAI boot
- Grasp the DAI boot as shown. Pull the **hearing instrument up** and out of the boot with your other hand. A slight twisting motion will help free the DAI boot from the miniBTE.





## Direct Audio Input/FM Program

Your hearing instrument has dedicated listening programs designed to work with a DAI boot or FM Receiver. When either is attached, the hearing instrument will automatically switch into this dedicated set of programs. Refer to the chart below to see how the DAI/FM programs are:

Program	Beeps	Function
1	1	Instrument microphone
2	2	DAI/FM + Mic*
3	3	DAI/FM only

\*Starting program

## Caring for Your Hearing Instruments

---

Healthy ears produce cerumen, a waxy substance that can clog your hearing instruments. Please follow these cleaning instructions to prevent wax build-up and ensure optimal performance.

### Every Night

- Check your hearing instruments for ear wax and wipe them clean with a cloth or tissue
- Use the cleaning tool provided to remove wax that may have accumulated in the sound dome, sound outlet or vent opening if you have a custom earmold
- Open the battery door fully to allow air to circulate
- A dry storage kit is recommended to remove any moisture that may have accumulated in the hearing instrument

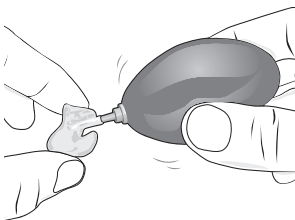
## If You Have an Earmold

You should wash your earmolds regularly. The hearing instrument itself must never be washed or allowed to get wet!

- Handle your instruments over a soft surface to avoid damage in case you drop them
- Disconnect the earmold from the hearing instrument by grasping the end of the hook firmly with one hand and grasping the tubing firmly with the other hand
- Pull the tubing away from the earhook
- Gently clean the earmold in warm soapy water
- Rinse the earmold and allow it to dry completely.



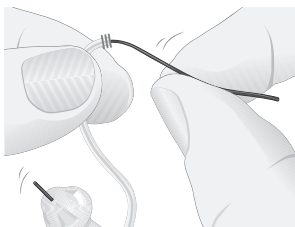
- Use an air puffer to remove any remaining moisture in the tubing
- When re-attaching the earmold to the instrument, it is important to position it correctly



## Cleaning the Thin Tube System

If you have the Thin Tube system, make sure that the tube and dome are kept free of ear wax at all times.

- Grasp the adapter firmly and disconnect the Thin Tube from the instrument by pulling it off. Please see page 46 for further instructions.
- Use a soft dry cloth or tissue to clean the outside of the Thin Tube and dome
- To remove wax from the Thin Tube, insert the cleaning wire at the connector end. Push the wire all the way into the Thin Tube until it comes out through the dome.
- Pull the cleaning wire out through the dome and discard it
- Reattach the Thin Tube connector to the adapter



### Note!

To avoid blocking the Thin Tube, do not use water to clean it.

## Exchanging the Dome

The dome should be changed regularly. The frequency of dome changes will depend on how fast ear wax builds up on the dome. Spare domes can be obtained from your hearing care provider.

- Remove the old dome by pulling it off the end of the Thin Tube
- With clean fingers, push a new dome as far as possible onto the Thin Tube. When attached correctly, the dome should touch the plastic ring around the Thin Tube.



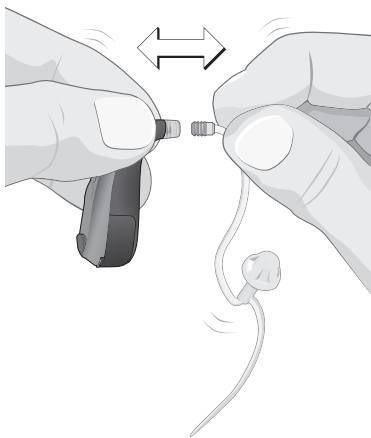
### **Note!**

If the dome is not securely attached to the Thin Tube, it could fall off in your ear canal. If this happens, please see your medical provider.

## Exchanging the Thin Tube System

If the Thin Tube becomes discolored, stiff or brittle, it should be replaced.

- Hold the instrument by the adapter and grasp the Thin Tube close to the connector
- Pull firmly to remove the old Thin Tube
- Attach the new Thin Tube by pushing it firmly into the connector



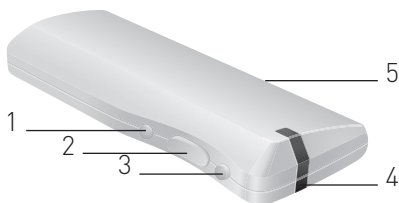
## Operating Your Bliss miniBTE with the RC-P Remote Control

---

### Optional Accessory

If you have purchased a remote control, you can use it to change listening programs, adjust the volume level up and down, or mute the hearing instruments.

For complete operating instructions, please read the separate RC-P Remote User Guide.



- 1 Program cycle button
- 2 Volume control
- 3 Mute button
- 4 Status light
- 5 Key lock

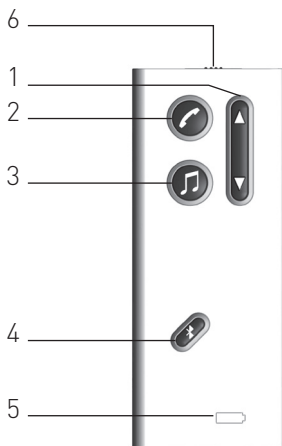
## Operating Your Bliss miniBTE with the SoundGate Communication Device

### Optional Accessory

If you have purchased a SoundGate, you may use it to perform basic functions such as changing the listening programs, adjusting the volume level up and down, or muting the hearing instruments. In addition, the SoundGate serves as a link between your hearing instruments and external sources such as music players, cell phones, computers, etc.

For complete operating instructions, please read the separate SoundGate User Guide.

- 1 Volume control and program change
- 2 Phone
- 3 Music/Audio key (e.g. MP3)
- 4 Bluetooth® key
- 5 Battery indicator
- 6 Key lock





## Environmental Protection

---

Your hearing instruments contain electronic components subject to the Directive 2002/96/EC on waste electrical and electronic equipment (WEEE).

Help to protect the environment by not disposing of your hearing instruments or batteries with your unsorted household waste. Please recycle your hearing instruments and batteries according to your local regulations or return them to your hearing care provider for disposal.



## **Product Approval, Markings and Compliance**

---

All Sonic hearing instruments comply with international standards concerning electromagnetic compatibility. Due to the limited space available on the hearing instruments all relevant approval markings are found in this document.

### **Electromagnetic Interference**

Your hearing instrument has been thoroughly tested for electromagnetic interference. However, some products may emit electromagnetic energy causing unforeseen interference with hearing instruments. Examples include induction cooking appliances, shop alarm systems, mobile phones, fax machines, personal computers, X-rays, CT scans, etc.

Even though your hearing instruments are designed to comply with the most stringent international standards of electromagnetic compatibility, they may emit electromagnetic energy that can cause interference with other devices.

Your hearing instruments contain a radio transmitter using short range magnetic induction technology working at 3.84 MHz. The magnetic field strength of the transmitter is  $< -42 \text{ dB}\mu\text{A/m @ 10 m}$ .

The electromagnetic emission from the radio system is well below international limits for human exposure. By comparison, the electromagnetic energy of the hearing instruments is lower than that generated by household items such as halogen lamps, computer monitors, dishwashers etc.

## **Cell Phone and Hearing Instrument Compatibility**

---

Some hearing instrument users have reported a buzzing sound in their devices when they are using cell phones, indicating that the cell phone and hearing instrument may not be compatible.

The compatibility of a particular hearing instrument and cell phone can be predicted by adding the rating for the hearing instrument immunity to the rating for the cell phone emissions (ANSI C63.19-2006 American National Standard Methods of Measurement of Compatibility between Wireless Communication Devices and Hearing Aids).

For example, the sum of a hearing instrument with a rating of 2 (M2/T2) and a telephone with a rating of 3 (M3/T3) would result in a combined rating of 5. According to the standard, any combined rating that equals at least 5 would provide “normal use”; a combined rating of 6 or greater would indicate “excellent performance.”

The immunity of your Bliss hearing instrument is at least M2.

The equipment performance measurements, categories and system classifications are based upon the best information available but Sonic cannot guarantee that all users will be satisfied.

**Note!**

The performance of individual hearing instruments may vary with individual cell phones. Please try this hearing instrument with your cell phone or, if you are purchasing a new phone, be sure to try it with your hearing instrument prior to purchase. For additional guidance, please ask your cell phone provider for the booklet entitled "Hearing Aid Compatibility with Digital Wireless Cell Phones."

## Warranty and Repairs

---

Your hearing instruments have a limited warranty, covering defects in materials and workmanship. This warranty covers the hearing instruments themselves, but not accessories such as batteries, tubing, domes, earmolds, etc.

This warranty is void if a defect is the result of misuse or mistreatment. The warranty is also void if the hearing instruments have been repaired by non-authorized service personnel.

Please review the warranty with your hearing care provider and make sure that your warranty card is completed correctly.



### **Note!**

Your hearing care provider may charge a service fee for processing warranty repairs.

## Accessories

---

Sonic offers a wide range of optional accessories that may be purchased to enhance your hearing system. Depending on hearing instrument type and local regulations, the following accessories are available:

- RC-P Remote Control
- SoundGate communication device (for wireless connection to cell phones, music players, etc.)
- TV Adapter (for wireless connection to your television via the SoundGate)
- Phone Adapter (for wireless connection to your landline phone via the SoundGate)

For further information on accessories please contact your hearing care provider.

## Common Problems and Solutions

---

<b>Problem</b>	<b>Possible cause</b>
Instrument whistles or squeals	Instrument not inserted correctly
	Ear wax accumulation in ear canal
	Instrument may be too loose
No volume, level too soft or humming noise	Instrument may not be turned ON
	Battery may be dead or inserted wrong way
	Volume level too soft
	Instrument may be in telecoil position
	Ear wax accumulation in ear canal
	Battery contacts may be dirty or corroded
	Sound outlet may be blocked or corroded
	Microphone sound inlet may be blocked
	Your hearing loss may have increased

---



---

**Solution**

---

Re-insert instrument

---

Consult your hearing care provider or physician

---

Consult your hearing care provider

---

Check that the battery door is closed completely

---

Insert a fresh battery

---

Increase volume level with volume control on RC-P or SoundGate (if available)

---

Check to make sure you are in the intended program

---

Consult your hearing care provider or physician

---

Open and close the battery door several times or clean the battery contacts carefully with a dry Q-tip

---

Check the sound outlet and change the filter if you can see that it is clogged

---

Consult your hearing care provider, do not try to clean this yourself

---

Consult your hearing care provider

---

<b>Problem</b>	<b>Possible cause</b>
Whirring noise, fading, weak or motor-boating sounds	Battery contacts may be dirty or corroded
	Moisture in hearing instrument
	Low battery
Instrument switches from ON to OFF periodically	Low battery

---

---

**Solution**

---

Open and close the battery door several times or clean the battery contacts with a dry Q-tip

---

Place hearing instrument in Dry-Instrument pack. Remove battery first. Consult your hearing care provider.

---

Insert a fresh battery

---

Insert a fresh battery

---

## **Information for the Hearing Care Provider**

---

A hearing care provider should advise a prospective hearing instrument user to consult with a licensed physician (preferably an ear specialist) promptly, before dispensing a hearing instrument, if the hearing care provider determines through inquiry, actual observation or review of any other available information concerning the prospective user, that the prospective user has any of the following conditions:

- Visible congenital or traumatic deformity of the external or middle ear
- History of active drainage from the ear within the previous 90 days
- History of sudden or rapidly progressive hearing loss within the previous 90 days
- Acute or chronic dizziness or vertigo
- Unilateral hearing loss of a sudden or recent onset within the previous 90 days
- Audiometric air-bone gap equal to or greater than 15 decibels at 500 hertz (Hz), 1000 Hz, and 2000 Hz
- Visible evidence of significant cerumen accumulation or a foreign body in the ear canal
- Pain or discomfort in the ear

---

## **Warning to Hearing Care Provider and Patient**

Special care should be exercised in selecting and fitting a hearing instrument whose maximum sound pressure level exceeds 132 decibels due to the fact that there may be risk of impairing the remaining hearing of the hearing instrument user.

## **Children with Hearing Loss**

A child with a hearing loss should be directed to a physician for medical evaluation and to other professionals for evaluation and rehabilitation since hearing loss may cause problems with language development and the educational and social growth of a child.

## **Compliance with Requirements for Europe**

---

This device is in conformance with the requirements of the Directive 93/42/EEC of the Council of the European Communities concerning medical devices, MDD. This is certified by applying this marking.



This device also complies with the essential requirements of the Directive 1999/5/EC of the European Parliament on radio equipment and telecommunications terminal equipment, R&TTE. It operates as an inductive application in a harmonized frequency band according to the Commission Decision 2008/432/EC and may be used in all member states of the EU and EFTA. This is certified by applying this marking.



Declarations of conformity are available at:  
Sonic Innovations, Inc.  
2501 Cottontail Lane  
Somerset, NJ 08873

## Compliance with Radio Communications Requirements for the USA and Canada

---

Sonic Innovations, Inc.

Bliss hearing instrument models BL100 MN; BL80 MN



FCC ID      ZTOMBTE1  
IC:            9799A-MBTE1

This device complies with part 15 of the FCC Rules and RSS-210 of Industry Canada. Operation is subject to the following two conditions:

- (1) This device may not cause harmful interference, and
- (2) This device must accept any interference received, including interference that may cause undesired operation.

This Class B digital apparatus complies with Canadian ICES-003.



### **Note!**

This equipment has been tested and found to comply with the limits for a Class B digital device, pursuant to part 15 of the FCC Rules.

These limits are designed to provide reasonable protection against harmful interference in a residential installation.

This equipment generates, uses, and can radiate radio frequency energy and, if not installed and used in accordance with the instructions, may cause harmful interference to radio communications. However, there is no guarantee that interference will not occur in a particular installation.

If this equipment does cause harmful interference to radio or television reception, which can be determined by turning the equipment off and on, the user is encouraged to try to correct the interference by one or more of the following measures:

- Reorient or relocate the receiving antenna
- Increase the separation between the equipment and receiver
- Connect the equipment into an outlet on a circuit different from that to which the receiver is connected
- Consult the dealer or an experienced radio/TV technician for help



**Note!**

Changes or modifications not expressly approved by Sonic could void the user's authority to operate the equipment.

## Information and Explanation of Symbols

---



The CE conformity marking indicates conformance to all applicable European Directives

---



This symbol indicates that the products described in these instructions for use adhere to the requirements for an application part of Type B of EN 60601-1. The surface of the hearing instrument is specified as application part of Type B.

---



This symbol indicates that it is important for the user to read and take into account the relevant information in these instructions for use

---



This sign indicates important safety information that must be observed to minimize risks or to avoid hazardous situations

---



Important information for handling and product safety

---



The crossed-out wheeled bin indicates that the European Directive on waste of electronic equipment applies

---

**Operating conditions**

The product is designed such that it functions without problem or restrictions if used as intended, unless otherwise noted in these instructions for use

---

**Transport and storage conditions**

During transport or storage, the temperature should not exceed the limit value of  $-13^{\circ}/140^{\circ}$  Fahrenheit ( $-25^{\circ}/60^{\circ}$  Celsius)

---

## Service

---

If none of the actions listed in the previous pages correct a problem you may have with your hearing instrument, contact your authorized Sonic service representative. Do not attempt to service your hearing instruments yourself or your warranty may be voided.

Place stamp with dispenser name and address here:





## Notes

A series of horizontal dotted lines for writing notes.



## World Headquarters

**Sonic Innovations, Inc.**  
2501 Cottontail Lane  
Somerset, NJ 08873 USA  
+1 888 423 7834

## Australia

**Sonic Australia**  
1/10 Dorsey Street  
Milton, QLD 4064, Australia  
Tel: +61 7 3368 4044  
Free call (Australia only)  
1800 639 263

## Canada

**Sonic Innovations Canada Ltd.**  
2885-B le Corbusier Blvd  
Laval, Québec H7L 4J5  
+1 800 667 7664



**Sonic Innovations, Inc.**  
2501 Cottontail Lane  
Somerset, NJ 08873 USA  
+1 888 423 7834

## International

**Sonic AG**  
Morgenstrasse 131B  
3018 Bern, Switzerland  
+41 31 560 21 21

## France

**Sonic France**  
Parc des Barbanniers  
3 allée des Barbanniers  
CS 40006  
92635 Gennevilliers cedex  
+33 1 41 88 00 88

## Germany

**Sonic Hörgeräte GmbH**  
Nunsdorfer Ring 14  
12277 Berlin  
+49 30 24 63 28 0

## Italy

**Sonic Italia**  
Piazza delle Crociate 16  
00162 Roma  
+39 06 44 24 68 52



**Sonic AG**  
Morgenstrasse 131B  
3018 Bern, Switzerland  
+41 31 560 21 21



10.12 | 125934 | UK

[www.sonici.com](http://www.sonici.com)

 **SONIC**  
Everyday Sounds Better