

SonicWALL TZ 150 WIRELESS Internet Security Appliance

Regulatory Statement and Safety Instructions

Regulatory Model/Type	Product Name
APL15-03A	TZ 150 WIRELESS

Class B Notice - Model APL15-03A

FCC Part 15 Class B Notice

NOTE: Models APL15-03A was tested and found to comply with the limits for a Class B digital device, pursuant to Part 15 of the FCC Rules. These limits are designed to provide reasonable protection against harmful interference in a residential installation. This equipment generates, uses, and can radiate radio frequency energy. And, if not installed and used in accordance with the instructions, may cause harmful interference to radio communications. However, there is no guarantee that interference will not occur in a particular installation. If the equipment does cause harmful interference to radio or television reception, which can be determined by turning the equipment off and on, the user is encouraged to try and correct the interference using one or more of the following measures:

- Reorient or relocate the receiving antenna.
- Increase the separation between the equipment and the receiver.
- Connect the equipment into an outlet on a circuit different from the receiver connection.
- Consult SonicWALL for assistance.

Complies with EN55022 Class B and CISPR22 Class B.

Refer to the label on the bottom of the unit for device information including Class A or Class B FCC information.

Caution: Modifying this equipment or using this equipment for purposes not shown in this manual without the written consent of SonicWALL, Inc. could void the user's authority to operate this equipment.

This device complies with Part 15 of the FCC Rules. Operation is subject to the following two conditions: (1) This device may not cause harmful interference, and (2) this device must accept any interference received, including interference that may cause undesired operation.

FCC RF Radiation Exposure Statement

This equipment complies with FCC RF radiation exposure limits set forth for an uncontrolled environment. This equipment should be installed and operated with a minimum distance of 20 centimeters (7.9 inches) between the radiator (antenna) and your body.

This transmitter must not be co-located or operating in conjunction with any other antenna or transmitter.

For more information regarding the above statement, please contact SonicWALL, Inc. at 1143 Borregas Avenue, Sunnyvale, CA 94089-1306 or 1-408-745-9600.

SonicWALL declares that the APL15-03A (FCC ID: QWU-03A) is limited in CH1~CH11 by specified firmware controlled in the USA

Canada (IC):

To prevent radio interference to the licensed service, this device is intended to be operated indoors and away from windows to provide maximum shielding. Equipment (or its transmit antenna) that is installed outdoors is subject to licensing.

1. Operation is subject to the following two conditions:

- 1) this device may not cause interference and
- 2) this device must accept any interference, including interference that may cause undesired operation of the device.

This device has been designed to operate with an antenna having a maximum gain of 0 dBD. Antenna having a higher gain is strictly prohibited per regulations of Industry Canada. Therequired antenna impedance is 50 ohms."

VCCI Statement

この装置は、情報処理装置等電波障害自主規制協議会（VCCI）の基準に基づくクラスB 情報技術装置です。この装置は、家庭環境で使用することを目的としていますが、この装置がラジオやテレビジョン受信機に近接して使用されると、受信障害を引き起こすことがあります。
取扱説明書に従って正しい取り扱いをして下さい。

Regulatory Information for Korea

B급 기기 (가정용 정보통신기기)

이 기기는 가정용으로 전자파적합등록을 한 기기로서
주거지역에서는 물론 모든지역에서 사용할 수 있습니다.



Ministry of Information and Telecommunication Certification Number

All products are made in Taiwan R.O.C.
All certificates held by NetSonic, Inc.

당해 무선설비는 운용중 전파혼신 가능성이 있음

Canadian Radio Frequency Emissions Statement

This Class B digital apparatus complies with Canadian ICES-003.
Cet appareil numérique de la classe B est conforme à toutes la norme NMB-003 du Canada.

CISPR 22 (EN 55022) Class B

Declaration of Conformity

Application of council Directive 89/336/EEC (EMC) and
72/23/EEC (LVD)

Standards to which conformity is declared

EN55022 (1998) Class B

EN 55024 (1998) A1 (2001)

EN 61000-3-2 (2000)

EN 61000-3-3 (1995) A1 (2001)

EN 60950 (2000)

National Deviations: AT, AU, BE, CH, CN, CZ, DE, DK, FI, FR, GB, GR, HU, IE, IL, IN, IT, JP, KR, NL, NO, PL, SE, SG,
SI

EN 50371 (2002)

Directive 1999/5/EC (R&TTE) and standards

EN 301 489-1/-17 and EN 300 328-1/-2

Cable Connections - All Models

All Ethernet cables are designed for intra-building connection to other equipment. Do not connect these ports directly to communication wiring or other wiring that exits the building where the SonicWALL is located.

Power Supply Information - All Models

If the power supply is missing from your SonicWALL product package, please contact SonicWALL Technical Support at 408-752-7819 for a replacement. This product should only be used with a UL listed power supply marked "Class 2" or "LPS", with an output rated 12 VDC, minimum 1.66 A.

Wall Mounting the SonicWALL TZ 150 WIRELESS

You can mount your SonicWALL TZ 150 WIRELESS on a wall or any vertical surface. Use the template on

the next page as a guide for placing the mounting screws.

1. Using the template on the next page, attach two screws to the surface where you want to mount the security appliance.

The mounting screws should have a head between 3/16" and 1/4" in diameter.

The mounting screws should stick approximately 1/8" out from the surface.

2. Slide the slots in the back of the SonicWALL TZ 150 WIRELESS over the heads of the mounting screws

and then slide the security appliance down to secure it in place.

Considerations for Mounting all Models

Mount in a location away from direct sunlight and sources of heat. A maximum ambient temperature of 104° F (40° C) is recommended.

Route cables away from power lines, fluorescent lighting fixtures, and sources of noise such as radios, transmitters, and broadband amplifiers

Ensure that no water or excessive moisture can enter the unit.

Allow unrestricted airflow around the unit and through the vents on the side of the unit. A minimum of 1 inch (25.44mm) clearance is recommended.

SonicWALL TZ 150 Wireless Security Appliance Getting Started Guide

The SonicWALL® TZ 150 Wireless is a total security platform for both your wired and wireless network, delivering true layered security by integrating gateway anti-virus, intrusion prevention and content filtering capabilities for small networks in an easy-to-use, low cost platform.

This *Getting Started Guide* provides instructions for basic installation and configuration of the *SonicWALL TZ 150 Wireless*. After you complete this guide, up to 10 computers on your Local Area Network (LAN) will have secure Internet access.

Note: For complete documentation, refer to the [SonicWALL SonicOS Standard 3.0 Administrator's Guide on the SonicWALL Resource CD](#) or at: <http://www.sonicwall.com/services/documentation.html>.

Before You Begin

Check Package Contents

- One SonicWALL TZ 150 Wireless security appliance
- One SonicWALL TZ 150 Wireless Getting Started Guide
- One SonicOS Standard 3.0 Release Notes
- One Ethernet cable
- One 12V, 1.66A power supply
- One SonicWALL Resource CD, which contains product documentation and software utilities.

Any Items Missing?

If any items are missing from your package, contact:

SonicWALL Support

Web: <http://www.sonicwall.com/support/>

E-mail: customer_service@sonicwall.com

SonicWALL TZ 150 Wireless Configuration

- 1 “Collect Required Information” on page 3
- 2 “Applying Power to the SonicWALL TZ 150 Wireless” on page 4
- 3 “Connecting the SonicWALL TZ 150 Wireless” on page 5
- 4 “Accessing the Management Interface” on page 6
- 5 “Using the SonicWALL Setup Wizard” on page 8
- 6 “Registering Your SonicWALL TZ 150 Wireless” on page 17
- 7 “Connecting Wireless Clients to the SonicWALL TZ 150 Wireless” on page 22
- 8 “Connecting Computers to Your SonicWALL TZ 150 Wireless” on page 26

What You Need to Begin

- A computer to use as a management station for initial configuration of the SonicWALL TZ 150 Wireless
- An Internet connection
- A Web browser for accessing the SonicWALL TZ 150 Wireless’s Web-based management interface. The Web browser must support Java and HTTP uploads. Internet Explorer 5.0 or higher or Netscape Navigator 4.7 or higher are recommended.

1

Collect Required Information

Internet Service Provider (ISP) Information

Collect the following information about your Internet service:

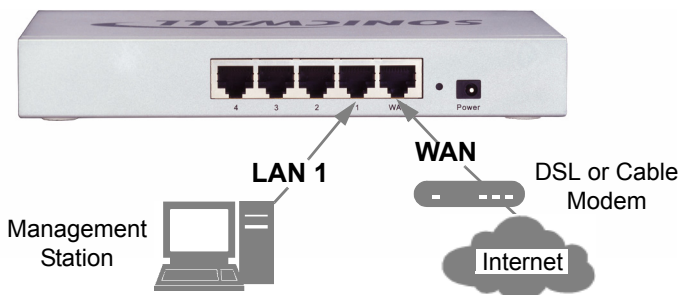
If you connect via	You probably use	Please record
Cable modem, DSL with a router	DHCP	You do not need to provide any Internet connection information.
Home DSL	PPPoE	User Name: _____ Password: _____ Note: Your ISP may require your user name in the format: <i>name@ISP.com</i>
T1, Static broadband, Cable or DSL with a static IP	Static IP	IP Address: _____ Subnet Mask: _____ Default Gateway: _____ Primary DNS: _____ Secondary DNS (optional): _____
Dial in to a server	PPTP	Server Address: _____ User Name: _____ Password: _____

Note: If you are not using one of the network configurations above, refer to the SonicOS Standard Administrator's Guide available on the SonicWALL Resource CD and on the Web at:

<<http://www.sonicwall.com/services/documentation.html>>.

3

Connecting the SonicWALL TZ 150 Wireless

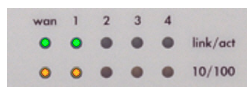


Connecting the Ethernet Cables

1. Connect one end of an Ethernet cable to your Internet connection, such as a DSL modem or cable modem. This cable may already be connected between your computer and your modem. If so, disconnect it from your computer, and leave it connected to the internet.
2. Connect the other end of the cable to the **WAN** port on the back of your SonicWALL TZ 150 Wireless. The **WAN** LEDs on the front panel light up indicating an active connection.



3. Connect one end of an Ethernet cable to the computer you are using to manage the SonicWALL TZ 150 Wireless.
4. Connect the other end of the cable to port # 1 on the back of your SonicWALL TZ 150 Wireless. The port # 1 LEDs on the front panel light up indicating an active connection.



4

Accessing the Management Interface

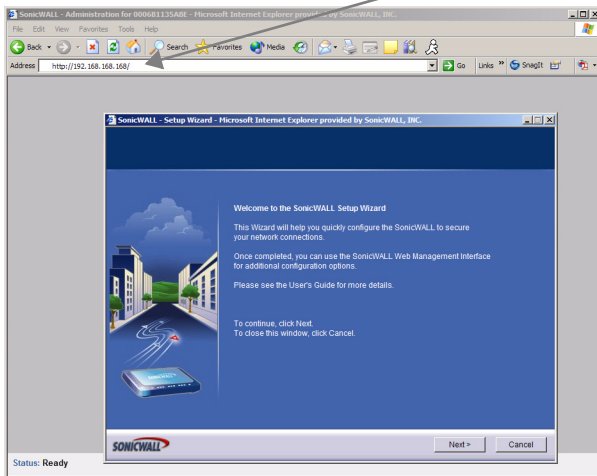
To access the Web-based management interface of the SonicWALL TZ 150 Wireless:

1. On the computer you have connected to port # 1, Start your Web browser.

Alert: Turn off pop-up blocking software before accessing the SonicWALL management interface.

Your Web browser must support Java and HTTP uploads. Internet Explorer 5.0 or higher or Netscape Navigator 4.7 or higher are recommended.

2. Enter **192.168.168.168** in the **Location** or **Address** field.



3. The **SonicWALL Setup Wizard** launches and guides you through the configuration and setup of your SonicWALL TZ 150 Wireless.

If the SonicWALL Setup Wizard Does Not Appear

If you cannot connect to the SonicWALL TZ 150 Wireless or the **Setup Wizard** does not display, verify the following configurations:

- Did you correctly enter the SonicWALL TZ 150 Wireless management IP address in your Web browser?
- Is your computer running pop-up blocking software?
- Are the Local Area Connection settings on your computer set to obtain an IP address dynamically (DHCP)? see Step 7, “Connecting Computers to Your SonicWALL TZ 150 Wireless” on page 26 for instructions on changing your Local Area Connection settings.
- Do you have the Ethernet cable connected to your computer and to port **1** on your SonicWALL TZ 150 Wireless?
- Some browsers may not launch the **Setup Wizard** automatically. In this case, log into SonicWALL TZ 150 Wireless using “**Admin**” as the user name and “**password**” as the password. After you log in, click the **Wizards** button on the **System > Status** page. Select **Setup** to begin configuring your SonicWALL TZ 150 Wireless.

Using the SonicWALL Setup Wizard

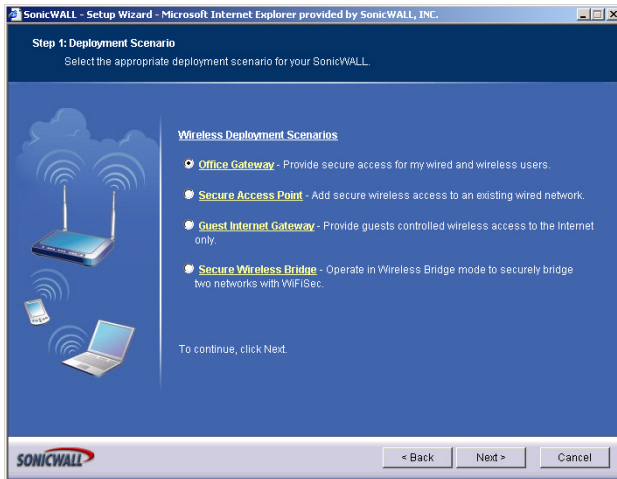
The SonicWALL **Setup Wizard** provides user-guided instructions for configuring your SonicWALL TZ 150 Wireless.

Note: Make sure you have any required ISP information to complete the configuration before using the **Setup Wizard**. See the list of required information in Step 1, “Collect Required Information” on page 3.

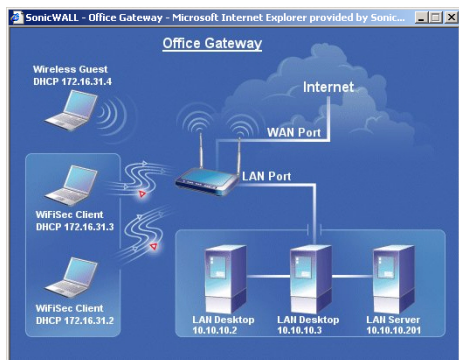
Tip: If you do not know what type of Internet connection you have, contact your ISP. In addition, the SonicWALL **Setup Wizard** will attempt to detect your connection settings. You will see what is automatically selected in Setup Wizard page 4, **WAN Network Mode**

Welcome - Click **Next** to begin.

1. **Deployment Scenario** - select the wireless deployment scenario that best matches your deployment requirements. Clicking on the deployment scenario link displays a diagram of the deployment to show how the scenario is best used.



Select **Office Gateway**, which is a commonly used wireless deployment for LAN and WLAN to Internet connectivity.



2. **Change Password** - Change the administrative password. This is the password for the **admin** account.

Old Password	Should be populated with the default password, <i>password</i> .
New Password	Enter your new password.
Confirm	Re-enter your new password.

Note: *Keep your new password in a safe place. If you lose your password, you will have to reset the SonicWALL TZ 150 Wireless to factory settings, losing your configuration. For instructions on resetting your SonicWALL TZ 150 Wireless, See the SonicOS Standard Administrator's Guide available on the SonicWALL Resource CD and on the Web at:*

<<http://www.sonicwall.com/services/documentation.html>>

Click **Next**.

3. **Change Time Zone** - Change the **Time Zone** setting to your local time zone.

Time Zone	Select the time zone for your location from the list.
------------------	---

Automatically adjust clock for daylight saving time	Check this if you live in an area that observes Daylight Savings Time.
--	--

Click **Next**.

Note: *It is important that you set the time zone correctly before you register your SonicWALL TZ 150 Wireless.*

4. **WAN Network Mode** - The **Setup Wizard** automatically detects most networking modes. If it does not detect the networking mode, you may have a Static IP Address. See Step 1, "Collect Required Information" on page 3.

Confirm the selection or select the correct type of network connection for your network.

Static IP	Select Static IP if you want to give the SonicWALL TZ 150 Wireless a specific, unchanging IP address.
DHCP	Select DHCP if your ISP assigns your computer a dynamic IP Address. DHCP is commonly used with cable modems.
PPPoE	Select PPPoE if your ISP requires a username and password to establish a connection and assign a dynamic address. PPPoE is commonly used with DSL modems.
PPTP	Select PPTP if you dial into a specific server and log into a VPN to establish a connection. With PPTP, you can have either a static or dynamic IP Address.

Click on the yellow link for a networking type to see a definition.

Click **Next**.

5. **WAN Network Mode** - The second WAN network mode page configures your WAN settings for the selection you made in the previous page.

WAN Network Mode: NAT Enabled (Static IP)

SonicWALL WAN IP Address	Enter a single, static IP address. This must be in the correct address range for your ISP.
WAN Sub-net Mask	Enter the subnet mask for your network, for example, 255.255.255.0.
Gateway (Router) Address	Enter the IP address of your internet gateway.
DNS Server Address	Enter the IP address of the DNS server for your network.
DNS Server Address #2 (optional)	You can enter a secondary, back-up DNS server to use if the first one fails.

Click **Next**.

WAN Network Mode: NAT with DHCP Client

You do not need to enter any WAN networking settings. The network settings are provisioned automatically from a DHCP server.

Click **Next**.

WAN Network Mode - NAT with PPPoE Client

Obtain an IP Address Automatically	Select this if your ISP assigns you a dynamic IP address.
Use the following IP Address	Select this if your ISP has assigned you a static IP address, and enter the address.
PPPoE User Name	Enter the user name for your Internet account. The username usually includes “@” and the domain name, for example, <i>joe.user@ispgateway.net</i> .
PPPoE Password	Enter the password for your internet account.
Inactivity Disconnect (minutes)	Check this box if you want the SonicWALL TZ 150 Wireless to disconnect from the Internet if there is no traffic for the number of minutes you enter.

Click **Next**.

WAN Network Mode: NAT with PPTP Client

PPTP Server IP Address	Enter the address of the server you are connecting to.
PPTP User Name	Enter your network user name.
PPTP Password	Enter your network password.
Obtain an IP Address Automatically	Select this if the server assigns you a dynamic IP address.
Use the following IP Address	Check this if you have been given a static IP address, and fill in the following three fields.

SonicWALL WAN IP Address	Enter the static IP address for your connection.
WAN/DMZ Subnet Mask	Enter the subnet mask for your connection.
Gateway (Router) Address	Enter the address of your Internet Gateway.

Click **Next**.

6. **LAN Settings** - The LAN Settings page configures your LAN interface. These settings apply to all twenty-four LAN ports.

SonicWALL LAN IP Address	Accept the default IP address or enter a new IP address of the LAN interface.
LAN Subnet Mask	Accept the default, or enter a subnet mask for your LAN.
Enable Windows Networking Support	Leave this option checked if you plan to have more than one Windows computer, Windows Networking allows them to communicate with each other. If you have only one Windows computer or have computers with other operating systems, Windows Networking has no effect.

By default, your SonicWALL TZ 150 Wireless is configured with a LAN network IP address, **192.168.168.168**, and subnet mask, **255.255.255.0**, that will work well for most installations. In most cases, leave the default LAN IP address and subnet mask unchanged.

Note: *The LAN IP address is the address you will use to access the SonicWALL TZ 150 Wireless management interface.*

Click **Next**.

7. **LAN DHCP Settings** - The LAN DHCP Settings page allows you to select whether or not to use the DHCP Server in the SonicWALL TZ 150 Wireless to automatically distribute IP addressing information to computers and other network devices on your LAN.

Enable DHCP Server on LAN	Leave checkbox checked to use the DHCP server in the SonicWALL TZ 150 Wireless. Do not use select this option if you already have a DHCP server on your network, or if you want to require your network clients to have static IP addresses.
LAN Address Range	If you enabled the DHCP Server, enter a range of IP addresses in the same subnet as the LAN IP address. Leave the default range unchanged if you accepted the default LAN IP address and subnet mask settings in the previous page.

Click **Next**.

8. **WLAN 802.11b/g Settings** - The WLAN 802.11b/g Settings page allows you to configure your wireless network settings.

SSID	Enter a unique name your wireless clients will use to identify the SonicWALL TZ 150 Wireless connection.
Radio Mode	Select which radio transmission standard you want to use. The default, Mixed , works for most office and home settings.
Country Code	Select the country where you are deploying this SonicWALL TZ 150 Wireless
Channel	Select the broadcast channel you want the SonicWALL TZ 150 Wireless to use. The default, AutoChannel automatically detects the channel with the least interference to use.

Click **Next**.

9. **WiFiSec** - WiFiSec is a security standard that uses an IPSec VPN to secure wireless network connections. The WiFiSec page

allows you to create a first VPN user to connect securely to your wireless network.

User Name	Enter a user name for the VPN user.
Password	Enter a unique password for the user.
Confirm Password	Re-enter the password.

Click **Next**.

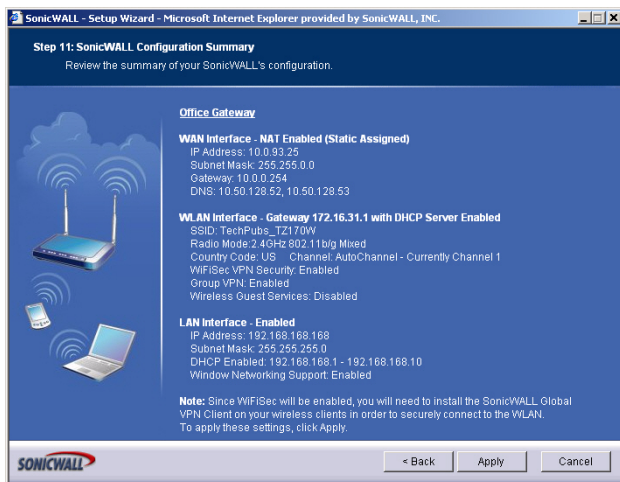
Note: You add additional users in the **Users> Settings** page in the SonicWALL TZ 150 Wireless security appliance's Management Interface. See the SonicOS Standard Administrator's Guide for instructions.

10. **Wireless Guest Services** - Wireless Guest services allow guest users to connect through your wireless network to the internet without any access to your network.

Enable Wireless Guest Services	Check to enable Wireless Guest Services on your network.
Account Name	Enter the account name your guest users must use to log into Wireless Guest Services.
Account Password	Enter a password for the guest account.
Confirm Password	Re-enter the password
Account Lifetime	Specify how long this account may exist before you need to regenerate it.
Session Lifetime	Specify how long a guest user may be logged in.
Comment	A brief description of the guest account.

Click **Next**.

11. **SonicWALL Configuration Summary** - Displays your network configuration information.



Setup Wizard Complete - your SonicWALL TZ 150 Wireless is now successfully configured for LAN, Wireless, and Internet access. Click **Restart** to complete the configuration process.

12. Test your connection: After the SonicWALL TZ 150 Wireless reboots, open a Web browser, and go to <http://www.sonicwall.com>

If you can view the SonicWALL home page, you have configured everything correctly.

If you cannot view the SonicWALL home page try a second URL. If you still cannot view a Web page, return to step 4, "Accessing the Management Interface" on page 6, log in as "admin" with your administrative password, and click on the Wizards button in the top right corner of the management interface to restart the wizard.

6

Registering Your SonicWALL TZ 150 Wireless

Once you've established your Internet connection, it is recommended you register your SonicWALL security appliance at mySonicWALL.com. Registering your SonicWALL security appliance provides the following benefits:

- Try a FREE 30-day trial of SonicWALL SonicWALL's Gateway Anti-Virus/Intrusion Prevention Service, Content Filtering Service, and Network Anti-Virus
- Activate SonicWALL security services
- Access SonicOS firmware updates
- Get SonicWALL technical support

Alert: *The **Time Zone** and **DNS** settings on your SonicWALL TZ 150 Wireless must be set correctly before registering your security appliance. See Step 5, "Using the SonicWALL Setup Wizard" on page 8 for instructions on setting the Time Zone and DNS settings.*

Before You Register

You need a mySonicWALL.com account to register the SonicWALL TZ 150 Wireless. You can create a new mySonicWALL.com account directly from the SonicWALL management interface.

Alert: *Make sure the **DNS** and **Time** settings on your SonicWALL TZ 150 Wireless are correct when you register the device. Configure **Time** settings in the **System > Time** page. Configure **DNS** settings in the **Edit Interface** window from the **Network > Interfaces** page.*

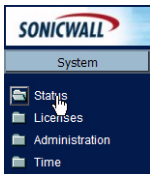
Note: *mySonicWALL.com registration information is not sold or shared with any other company.*

Creating a mySonicWALL.com Account

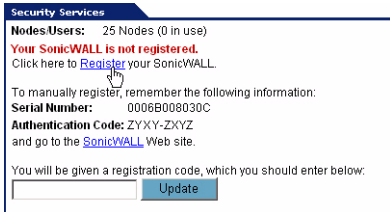
Creating a mySonicWALL.com account is fast, simple, and FREE. Simply complete an online registration form in the SonicWALL TZ 150 Wireless management interface.

If you already have a mysonicWALL.com account, go to “Registering Your SonicWALL TZ 150 Wireless” on page 19 to register your appliance.

1. If you are not logged into the SonicWALL TZ 150 Wireless management interface log in with the username **admin** and the administrative password you set in the **Setup Wizard**.
2. If the **System > Status** page is not displaying in the management interface, click **System** in the left-navigation menu, and then click **Status**.

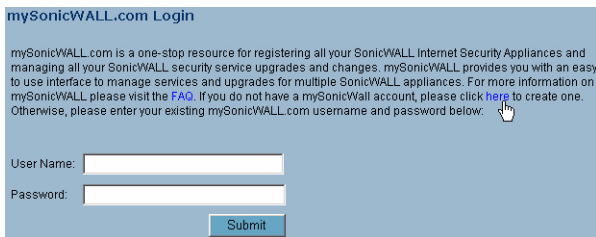


3. On the **System > Status** page, in the **Security Services** section, click the **Register** link in **Your SonicWALL is not registered**. Click here to **Register your SonicWALL**.



4. In the mySonicWALL.com Login page, click the **here** link in “If you do not have a mySonicWALL account, please click **here**”

to create one.” The mySonicWALL.com account form is displayed.



mySonicWALL.com Login

mySonicWALL.com is a one-stop resource for registering all your SonicWALL Internet Security Appliances and managing all your SonicWALL security service upgrades and changes. mySonicWALL provides you with an easy to use interface to manage services and upgrades for multiple SonicWALL appliances. For more information on mySonicWALL please visit the [FAQ](#). If you do not have a mySonicWall account, please click [here](#) to create one. Otherwise, please enter your existing mySonicWALL.com username and password below.

User Name:

Password:

5. In the **MySonicWall Account** page, enter in your information in the **Account Information, Personal Information** and **Preferences** fields. All fields marked with an asterisk (*) are required fields.

Note: Remember your username and password to access your mySonicWALL.com account.

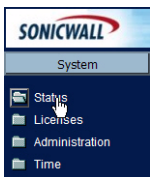
6. Click **Submit** after completing the **MySonicWALL Account** form.
7. When the mySonicWALL.com server has finished processing your account, you will see a page saying that your account has been created. Click **Continue**.

Congratulations. Your mySonicWALL.com account is activated. Now you need to log into mySonicWALL.com to register your SonicWALL TZ 150 Wireless.

Registering Your SonicWALL TZ 150 Wireless

1. If you are not logged into the SonicWALL TZ 150 Wireless management interface, log in with the username **admin** and the administrative password you set in the **Setup Wizard**.

2. If the **System > Status** page is not displaying in the management interface, click **System** in the left-navigation menu, and then click **Status**.



3. On the **System > Status** page, in the **Security Services** section, click the **Register** link. The **mySonicWALL.com Login** page is displayed.

A screenshot of the 'mySonicWALL.com Login' page. The page has a light blue background. At the top, it says 'mySonicWALL.com Login'. Below that, there is a paragraph of text explaining the service. Underneath the text, there are two input fields: 'User Name:' and 'Password:'. At the bottom right of the form area, there is a blue 'Submit' button.

4. Enter your mySonicWALL.com account username and password in the **User Name** and **Password** fields, then click **Submit**.
5. The next several pages inform you about the free trials available to you for SonicWALL's Security Services:
- **Gateway Anti-virus** - Delivers real-time virus protection for your entire network
 - **Complete Anti-virus** - Delivers desktop and server anti-virus protection
 - **Premium Content Filtering Service** - Enhances productivity by limiting access to objectionable Web content
 - **Intrusion Prevention Service** - Protects your network against worms, Trojans and application layer attacks
- Click **Continue** on each page.
6. At the top of the **Product Survey** page, Enter a "friendly name" for your SonicWALL content security appliance in the **Friendly Name** field. The friendly name allows you to easily identify your

SonicWALL content security appliance in your mySonicWALL.com account.

7. Please complete the Product Survey. SonicWALL uses this information to further tailor services to fit your needs.
8. Click **Submit**.
9. When the mySonicWALL.com server has finished processing your registration, you will see a page informing you that your SonicWALL TZ 150 Wireless appliance is registered. Click **Continue**, and the **System > Licenses** page is displayed showing the available security services. You can activate the services from this page now or at any time in the future.

Congratulations

Your SonicWALL TZ 150 Wireless is now fully operational.

You can continue with this Getting Started Guide to:

- Set up computers on your network
- Mount your SonicWALL TZ 150 Wireless on a wall or to any vertical surface

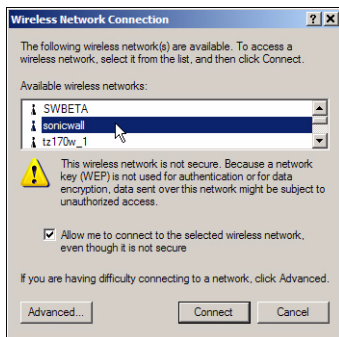
Connecting Wireless Clients to the SonicWALL TZ 150 Wireless

For wireless clients to connect to your WLAN zone, they need:

- A wireless network card installed and configured for the SonicWALL TZ 150 Wireless' SSID
- SonicWALL GVC or SonicWALL GSC installed and configured for a secure wireless connection

Connecting to the Wireless Network

You connect to the wireless network according to the requirements of your client operating system. Your wireless client may automatically detect and display the SonicWALL TZ 150 Wireless' SSID in a list of available wireless networks or you may need to manually configure your wireless card with the SonicWALL TZ 150 Wireless' SSID.



Establishing Secure Wireless Connections

For a wireless client to securely connect to the SonicWALL TZ 150 Wireless using Wi-FiSec, the SonicWALL Global VPN Client (GVC) and SonicWALL Global Security Client (GSC) must be installed and configured. Installing and configuring SonicWALL GVC involves the following procedures:

- “Installing the SonicWALL GVC or SonicWALL GSC Using the Setup Wizard” on page 23

- “Creating an Office Gateway Connection Profile Using the New Connection Wizard” on page 24
- “Establishing a WiFiSec VPN Connection Using the WLAN GroupVPN Policy” on page 25

Installing the SonicWALL GVC or SonicWALL GSC Using the Setup Wizard

If necessary, install the SonicWALL GVC. It is available either as the standalone SonicWALL GVC or as the SonicWALL GVC component of SonicWALL GSC. Follow the instructions in the **Setup Wizard** to install SonicWALL GVC or SonicWALL GSC.

Note: SonicWALL GVC is free to use for WiFiSec secured wireless connections. For remote VPN access through a WAN port, you must have a GVC Client License. For complete product documentation on SonicWALL GVC or SonicWALL GSC, see your Resource CD or visit the SonicWALL Web site at

[<http://www.sonicwall.com/services/documentation.html>](http://www.sonicwall.com/services/documentation.html).

Tip: You can download the latest GVC installer at SonicWALL's product Web site at

[<http://help.mysonicwall.com/applications/vpnclient>](http://help.mysonicwall.com/applications/vpnclient).

Creating an Office Gateway Connection Profile Using the New Connection Wizard

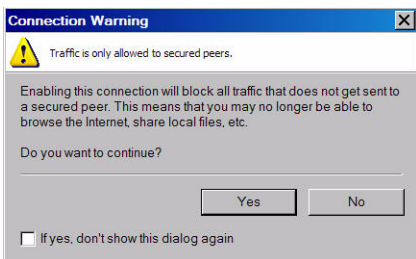
1. In your Windows Start Menu, Choose **Start > Programs > SonicWALL Global VPN Client**. The first time you open SonicWALL GVC, the **New Connection Wizard** automatically launches.



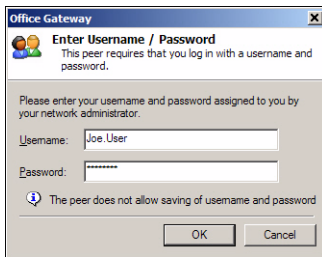
- If the **New Connection Wizard** does not display, click the **New Connection Wizard** icon on the far left side of the toolbar to launch it. Click **Next**.
2. In the **Choose Scenario** page, select **Office Gateway**. Click **Next**.
 3. In the **Completing the New Connection Wizard** page select any of the following options:
 - Select **Create a desktop shortcut to this connection**, if you want to create a shortcut icon on your desktop for this VPN connection.
 - Select **Enable this connection when the program is launched**, if you want to automatically establish this VPN connection when you launch the SonicWALL Global VPN Client.
 4. Click **Finish**. The new VPN connection policy appears in the **SonicWALL Global VPN Client** window.

Establishing a WiFiSec VPN Connection Using the WLAN GroupVPN Policy

1. In the **SonicWALL Global VPN Client** window, double-click the **Office Gateway** profile. The **Connection Warning** dialog box is displayed, which informs you that all traffic that is not going to the secured VPN gateway will be blocked.



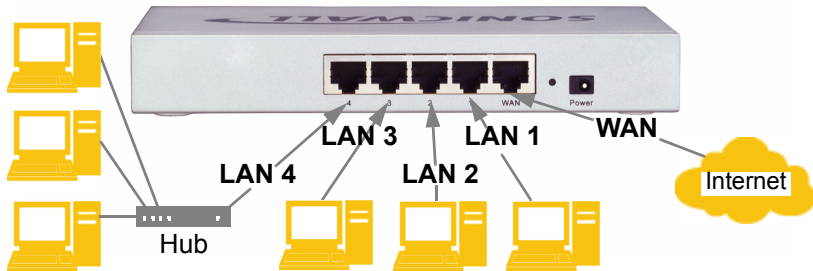
2. Click **Yes** to continue.
3. In the **Enter Username/Password** dialog box, enter the authentication credentials for the user configured on the SonicWALL security appliance's local user database for access to the **WLAN GroupVPN**.



4. Click **OK**. You now have secure wireless access to all the networks, subnets, and addresses you assigned the user access.

Connecting Computers to Your SonicWALL TZ 150 Wireless

You can attach up to ten computers to your SonicWALL TZ 150 Wireless.



Configuring Computers for Your Network with DHCP

If you enabled the DHCP Server in the **Setup Wizard**, each computer on your network must be configured to obtain its IP address dynamically. The following steps provide instruction on changing the Local Area Connection settings for several versions of Windows.

Note: *If you are not using DHCP, refer to the [SonicWALL SonicOS Standard 3.0 Administrator's Guide](#) available on the SonicWALL Resource CD and on the SonicWALL's Documentation Web Site at: <http://www.sonicwall.com/services/documentation.html>.*

Windows XP

1. Open the **Local Area Connection Properties** window (**Start > Settings > Network Connections** on most versions of Windows XP).
2. Right click on the **Local Area Connection** icon, and choose **Properties**.
3. In the list of connection items, select **Internet Protocol (TCP/IP)** and click **Properties**.
4. Select **Obtain an IP address automatically**.
5. Select **Obtain DNS Server automatically**.

6. Click **OK** and then **OK** again to apply the settings.

Windows 2000

1. From your Windows **Start** menu, select **Settings**.
2. Open **Network and Dial-up Connections**.
3. Right click on the **Local Area Connection** icon, and choose **Properties**.
4. Highlight **Internet Protocol (TCP/IP)** and click **Properties**.
5. Select **Obtain an IP address automatically**.
6. Select **Obtain DNS Server automatically**.
7. Click **OK** and then **OK** again to apply the settings.

Windows NT

1. From the **Start** list, highlight **Settings** and then select **Control Panel**.
2. Open **Network**.
3. Double-click **TCP/IP** in the **TCP/IP Properties** window.
4. Select **Obtain an IP address automatically**.
5. Click **DNS** at the top of the window.
6. Select **Obtain DNS Server automatically**.
7. Click **OK**, and then click **OK** again.
8. Restart the computer to apply the settings.

Windows 98

1. In the **Start** menu, select **Settings** and then select **Control Panel**.
2. Open **Network**.
3. Double-click **TCP/IP** in the **TCP/IP Properties** window.
4. Select **Obtain IP Address automatically**.
5. Click **DNS Configuration**.
6. Select **Obtain DNS Server automatically**.
7. Click **OK**, and then click **OK** again.
8. Restart the computer to apply the settings.

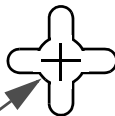
Mounting the SonicWALL TZ 150 Wireless

You can mount your SonicWALL TZ 150 Wireless on a wall or any vertical surface. Use the template on the next page as a guide for placing the mounting screws.

1. Using the template on the next page, attach two screws to the surface where you want to mount the security appliance.
The mounting screws should have a head between 3/16" and 1/4" in diameter.
The mounting screws should stick approximately 1/8" out from the surface.
2. Slide the slots in the back of the SonicWALL TZ 150 Wireless over the heads of the mounting screws and then slide the security appliance down to secure it in place.

SonicWALL TZ 150 Wireless Mounting Template

Align front
corner here

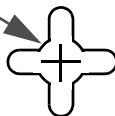


Attach mounting screw here

Considerations for Mounting the SonicWALL TZ 150 Wireless

- Mount in a location away from direct sunlight and sources of heat. A maximum ambient temperature of 104° F (40° C) is recommended.
- Route cables away from power lines, fluorescent lighting fixtures, and sources of noise such as radios, transmitters, and broadband amplifiers
- Ensure that no water or excessive moisture can enter the unit.
- Allow unrestricted airflow around the unit and through the vents on the side of the unit. A minimum of 1 inch (25.44mm) clearance is recommended.

Attach mounting screw here



Glossary of Networking Terms

- **Default Gateway** - A device on an internetwork that forwards packets to another network.
- **DHCP** - Dynamic Host Configuration Protocol allocates IP addresses to computers on the network automatically without assigning a computer a static (fixed) IP address.
- **DNS** - A Domain Name System is a hierarchical naming system that resolves a domain name with its associated IP address. A DNS server looks up the name of a computer and finds the corresponding IP address. This allows users to access hosts using friendly text-based names instead of IP addresses. These names are called fully qualified domain names (FQDN).
- **IP Address** - An Internet Protocol Address is a thirty-two bit number that identifies a computer or other resource on the Internet or on any TCP/IP network. The number is usually expressed as four numbers from 0 to 255 separated by periods, for example, 172.16.31.254.
- **LAN** - A Local Area Network is typically a group of computers located at a single location, and is commonly based on the Ethernet architecture.
- **NAT** - Network Address Translation is an internet standard that allows your local network to use private IP addresses, which are not recognized on the Internet. The IP address used for the router is the only routable IP address. The computers behind the NAT can access the Internet through the router, but Internet users cannot access the computers behind the router.
- **Packet** - A unit of information transmitted over the internet or within any TCP/IP network. Packets have a header, which contains information about the source, destination, and protocol to be used for the data, and a body, which contains the data being transmitted.
- **PPPoE** - The Point to Point Protocol over Ethernet supports the transmission of network packets over an analog phone line.
- **Private IP Address** - An IP address for a resource in your network that is not known or published outside the zone (for example LAN) where it is located.

- **Public IP Address** - An IP address for a resource in your network that is published outside your network to the WAN.
- **Router** - A device that routes data between networks through IP address information in the header of the IP packet. A router forwards packets to other routers until the packets reach their destination. The Internet is the largest example of a routed network.
- **Subnet** - A portion of a network. Each subnet within a network shares a common network address and is uniquely identified by a subnetwork number.
- **Subnet Mask** - A 32-bit number used to separate the network and host sections of an IP address. A subnet mask subdivides an IP network into smaller pieces. An example of a subnet mask might be 255.255.255.248 for subnet with only eight IP addresses.
- **TCP/IP** - Transmission Control Protocol/Internet Protocol is the basic communication protocol of the Internet. It supports sending information in packets, and identifies each device with a unique numeric IP address.
- **VPN** - A Virtual Private Network is a virtual network that encrypts data and sends it privately over the Internet to protect sensitive information.
- **WAN** - A Wide Area Network is a geographically distributed network composed of multiple networks joined into a single large network. The Internet is a global WAN.

SonicWALL TZ 150 Wireless Security Appliance Regulatory Statement and Safety Instructions

Regulatory Model/Type	Product Name
APL15-03B,	TZ 50

Note: Detailed regulatory information can be found in the electronic file, "SonicWALL_TZ_50_Regulatory_Statement.pdf," located on the SonicWALL Resource CD provided with the unit or on the SonicWALL Web site: <<http://www.sonicwall.com>>.

Cable Connections

All Models

All Ethernet and RS232 (Console) cables are designed for intra-building connection to other equipment. Do not connect these ports directly to communication wiring or other wiring that exits the building where the SonicWALL is located.

Power Supply Information Models APL15-03B

If you need to order a power supply for your SonicWALL TZ 150 Wireless, please contact SonicWALL Technical Support at 408-752-7819 for a replacement. This product should only be used with a UL listed power supply marked "Class 2" or "LPS", with an output rated 12 VDC, minimum 1.66 A.

Considerations for Mounting the APL15-03B

See the "SonicWALL TZ 150 Wireless Mounting Template" on page 29.

Copyright Notice

© 2004 SonicWALL, Inc.

All rights reserved.

Under the copyright laws, this manual or the software described within, can not be copied, in whole or part, without the written consent of the manufacturer, except in the normal use of the software to make a backup copy. The same proprietary and copyright notices must be affixed to any permitted copies as were affixed to the original. This exception does not allow copies to be made for others, whether or not sold, but all of the material purchased (with all backup copies) can be sold, given, or loaned to another person. Under the law, copying includes translating into another language or format.

Specifications and descriptions subject to change without notice.

Trademarks

SonicWALL is a registered trademark of SonicWALL, Inc.

Microsoft Windows 98, Windows NT, Windows 2000, Windows XP, Windows Server 2003, Internet Explorer, and Active Directory are trademarks or registered trademarks of Microsoft Corporation.

Netscape is a registered trademark of Netscape Communications Corporation in the U.S. and other countries. Netscape Navigator and Netscape Communicator are also trademarks of Netscape Communications Corporation and may be registered outside the U.S.

Adobe, Acrobat, and Acrobat Reader are either registered trademarks or trademarks of Adobe Systems Incorporated in the U.S. and/or other countries.

Other product and company names mentioned herein may be trademarks and/or registered trademarks of their respective companies and are the sole property of their respective manufacturers.

Notes

Notes