



AireoTM

User's Manual



Table of Contents

TABLE OF CONTENTS.....	2
INTRODUCTION.....	5
Welcome	5
Aireo™ User's Guide	6
Communications Regulation Information.....	7
Caring for Aireo.....	8
Before You Begin.....	9
Tour Aireo.....	11
Basic Connections.....	13
LET'S GET STARTED.....	16
Installation Procedure.....	16
The Installation Wizard	19
LOADING MUSIC ON AIREO™	22
Using SoniqSync	22



AIREO FEATURES.....	25
MP3 / WMA Player	25
FM Stereo	25
FM Transmitter	25
File Caddy	26
SD/MMC Flash Storage	26
Aireo Status Displays.....	26
Using Aireo™.....	29
MP3 PLAYER APPLICATION	32
Playing Aireo Music	32
Browse	33
Aireo Preferences.....	39
FM STEREO APPLICATION	46
FM Stereo Music.....	46
SONIQSYNC APPLICATION	48
Connecting Wirelessly.....	48
Dock To PC	49



FILE CADDY APPLICATION	58
Managing Files.....	58
APPENDIX A - TECH SPEC.....	60
Aireo™ Technical Specifications.....	60
APPENDIX B – LICENSE AGREEMENT	64
Aireo™ License Agreement	64
CONTACT US.....	68



Introduction

Welcome

Congratulations! Thank you for purchasing the Element Aireo™ MP3 Player. Advanced features found only on Aireo are now at your fingertips. Your music, your way! Aireo now provides access to your music through WiFi (wireless) technology. Aireo's 1.5GB hard drive will store more than 300 4-minute songs for you that can be refreshed when you wish through wireless synchronization. Aireo includes:

- MP3/WMA Player
- FM Stereo
- FM Transmitter
- SD/MMC Card drive
- File Caddy
- USB Connectivity
- Behind-the-head Headphones
- Backlit LCD Display
- AC Power Adaptor (120/220V)
- Long Lasting Rechargeable Battery
- Deluxe Carrying Case

Thank you for purchasing an Element Aireo™ MP3 Player. The latest technology in portable audio!

More Information

- Refer to the Aireo™ Quick Start Guide for fast information on how to setup and use your Aireo system.
- Visit the Aireo Website at www.SoniqCast.com.



Aireo™ User's Guide

Element Aireo™ MP3 Player

Information in this document is subject to change without notice and does not represent a commitment on the part of SoniqCast LLC. No part of this manual may be reproduced or transmitted in any form or by any means, electronic or mechanical, including photocopying or recording, for any purpose without written permission of SoniqCast, LLC. The software described in this document is furnished under a license agreement and may be used or copied only in accordance with the terms of the license agreement. It is against the law to copy the software on any other medium except as specifically allowed in the license agreement. The licensee may make one copy of the software for backup purposes.

The Software License Agreement is located in Appendix B of this documentation.

Copyright 2004 SoniqCast LLC All rights reserved.

Version 1.0

January 2004

Microsoft, MS-DOS, and Windows are registered trademarks of Microsoft Corporation. All rights reserved.

All other products are trademarks or registered trademarks of their respective owners.



Communications Regulation Information

FCC Compliance Statement

This MP3 Player complies with Part 15 of the FCC rules. Operation is subject to the following two conditions: (1) This device may not cause harmful interference, and (2) this device must accept any interference received, including interference that may cause undesired operation. See instructions if interference to radio or television reception is suspected.

Radio and Television Interference

This device generates, uses, and can radiate radio-frequency energy. If not installed and used properly – it may cause interference with radio and television reception.

This equipment has been tested and found to comply with the limits for a Class B digital device in accordance with the specification in Part 15 of the FCC rules. These specifications are designed to provide reasonable protection against such interference in a residential installation. However, there is no guarantee that interference will not occur in a particular installation. You can determine whether your MP3 Player system is causing interference by turning it off. If the interference stops, it was probably caused by the MP3 Player or one of the peripheral devices.

If your MP3 Player system does cause interference to radio or television reception, try to correct the interference by using one or more of the following measures:

- Turn the television or radio antenna until the interference stops.
- Move the computer to one side or the other of the television.
- Move the computer farther away from the television or radio.
- Plug the computer into an outlet that is on a different circuit from the television or radio. (That is, make certain the computer and the television or radio are on circuits controlled by different circuit breakers or fuses.)

If necessary, consult a SoniqCast-authorized service provider or SoniqCast. See the service and support information available in this users guide. Or, consult an experienced radio/television technician for additional suggestions.

Important: Changes or modifications to this product not authorized by SoniqCast LLC could void the EMC compliance and negate your authority to operate this product.

This product was tested for EMC compliance under conditions that include use of SoniqCast peripheral devices and SoniqCast shielded cables and connectors between MP3 Player system components. It is important that you use SoniqCast peripheral devices and shielded cables and connectors between system components to reduce the possibility of causing interference to radios, television sets, and other electronic devices. You can obtain SoniqCast peripheral devices and the proper shielded cables and connectors through a SoniqCast-authorized dealer. For non-SoniqCast peripheral devices, contact the manufacturer or dealer for assistance.

Industry Canada Statement

This Class B device meets all requirements of the Canadian interference-causing equipment regulations.

Cet appareil numérique de la classe B respecte toutes les exigences du Règlement sur le matériel brouilleur du Canada.



Caring for Aireo

Safety and Handling

Caring for your MP3 Player – Although Aireo is quite robust, please observe safety and handling instructions:

1. Do not store or use Aireo in areas exceeding 45° C, or 113° F
2. Do not subject Aireo to excessive force or impact
3. Keep Aireo away from excessive moisture
4. Do not expose Aireo to heat or flame
5. Keep Aireo away from strong magnetic fields
6. Please do not dismantle
7. Store Aireo out of direct sunlight
8. Do not crush or puncture

Caring for Aireo's Battery – Aireo contains a long-lasting Lithium-ion battery that is NOT removable. Please observe the following precautions:

1. Do not attempt to change Aireo's internal battery. Please contact our Technical Support personnel for service of the battery.



Before You Begin

Package Contents – The following items are included with your Aireo purchase:

- Aireo 1.5 Gig MP3 Player
- Stereo Headphones
- USB Cable
- AC Power Adapter
- Quick Start Guide
- Deluxe Carry Case
- Limited Warranty

Website Information – Visit the Aireo website for more information and support:

- Aireo Software and Firmware Updates
- Online Technical Support
- Troubleshooting
- FAQ's
- How-To Tutorials
- Documentation
- Accessories
- Product Information



Before You Begin (continued)

Documentation & Software – Documentation and software necessary for your Aireo player and Host PC are included on the Aireo player hard-drive. See: Let's Get Started - Installation Setup for more instruction.

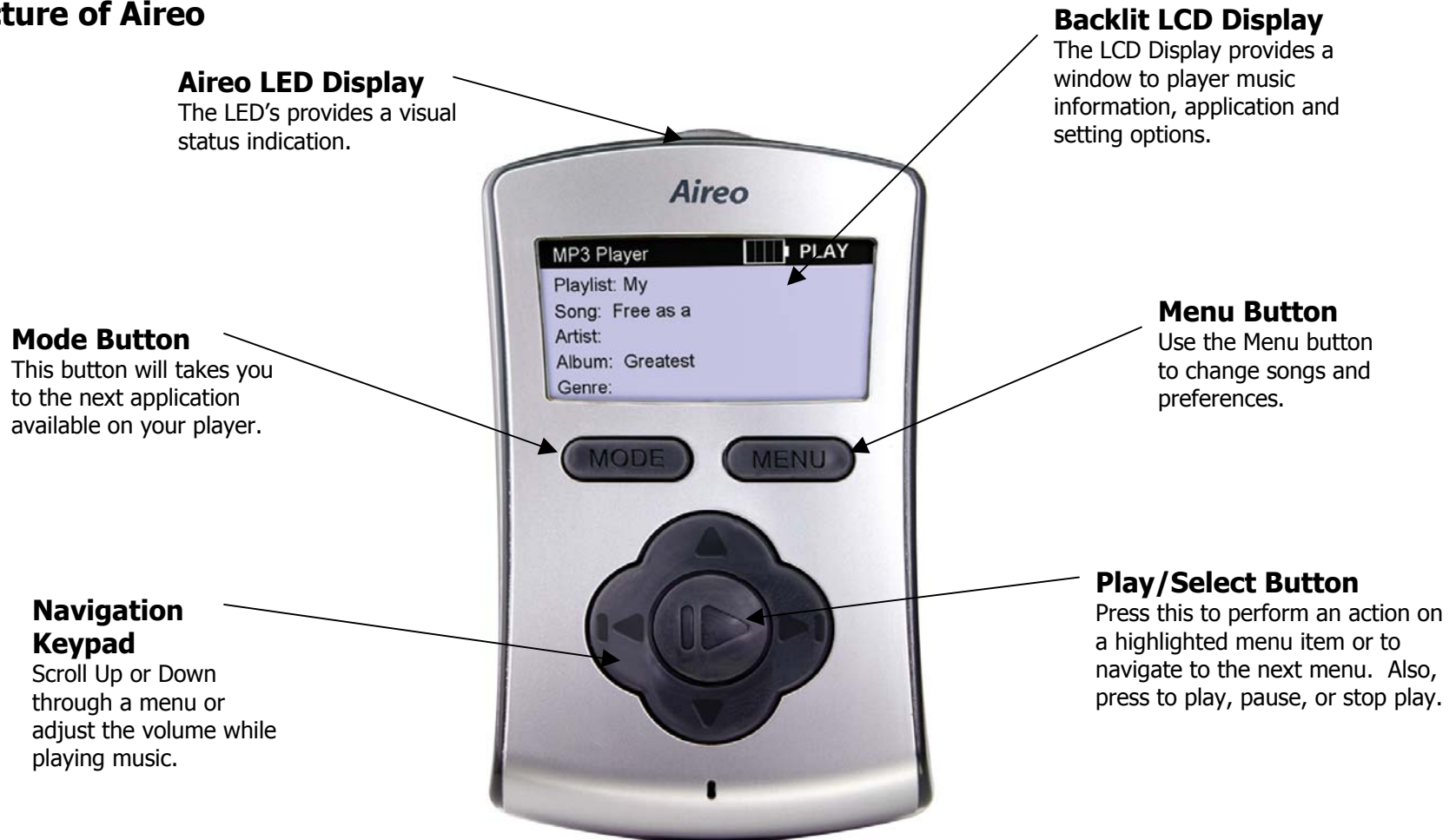
- An Installation Wizard will guide you through the installation process
- Internet connection is required for proper installation

Minimum System Requirements – The following is required as a minimum for your Aireo host PC operations:

- Microsoft® Windows® 2000, or Windows® XP
- Intel® Pentium II 200 MHz, AMD®-K6-2® 200 MHz or better processor (Pentium III 450 MHz or higher recommended)
- USB 1.1 or 2.0 port connection
- 64 MB RAM (128 MB recommended)
- 20 MB free hard disk space (more if storing music files)
- Internet connection for Internet content downloading and website support
- Installed Mouse
- SVGA graphics adapter (256 colors, 800 x 600 resolution or better)
- 802.11 B/G Wireless Access Point required for wireless PC to player transfers

Tour Aireo

Picture of Aireo



Tour Aireo (continued)





Basic Connections

AC Power Adapter – CHARGE AIREO'S BATTERY! With Aireo's design, take it with you wherever you go. Occasionally you will need to charge the internal battery pack installed in your Aireo player. You may use Aireo when connected to an external power source as well. Aireo battery will charge three different ways:

- **AC Power Adapter** – Connect the AC power adapter to the connection port found at the bottom of your player. The AC adapter will recharge the battery from 0% to 60-70% of its capacity in about 2 hours. The battery will fully charge in about 4 hours. A red dome LED will be lit while charging the player if powered off.
 1. Plug the AC adapter into an electrical outlet.
 2. Connect the AC Power Adapter to Aireo™.
 3. When the battery is fully charged, the battery icon will display four solid bars on your player or, the red dome LED will turn off.
 4. Disconnect the adapter from Aireo – and enjoy.
- **Desktop Player Dock (Optional)** – Place Aireo into the Desktop Player Dock accessory. The Player Dock accessory provides power for your Aireo and an interface to your stereo system or computer. The Player Dock is a convenient way to store Aireo and charge the battery.
- **Auto-Dock Accessory (12 V Adaptor)** – While traveling, plug Aireo into your automobile's power jack. You can listen to music transmitted from Aireo to your car stereo keeping Aireo's battery fully charged.



Basic Connections (continued)

Aireo Headphones – You can connect one or TWO sets of headphones to your Aireo player. Plug headphones into either jack on top of the player. Enjoy your music and share it with a friend!

USB – Initially, connect Aireo into the USB port on your computer to upload important software and information for your Aireo player system. See: Let's Get Started - Installation Setup for more information.

- The USB connection also provides another way to download music to Aireo through the SoniqSync Mix Manager.
- Using the USB connection, Aireo will appear as a local storage device to your computer. By double-clicking on or opening Aireo's drive letter, you can view files on Aireo's internal hard-drive (HDD). See: File Caddy Operations in this manual for more information about transferring files.

Note: Never move or delete any system folders on your Aireo hard drive. These files are required to allow proper operation of your Aireo player.



Basic Connections (continued)



Additional Accessories – Element provides the following accessories to help provide Aireo a wide range of connectivity and usage:

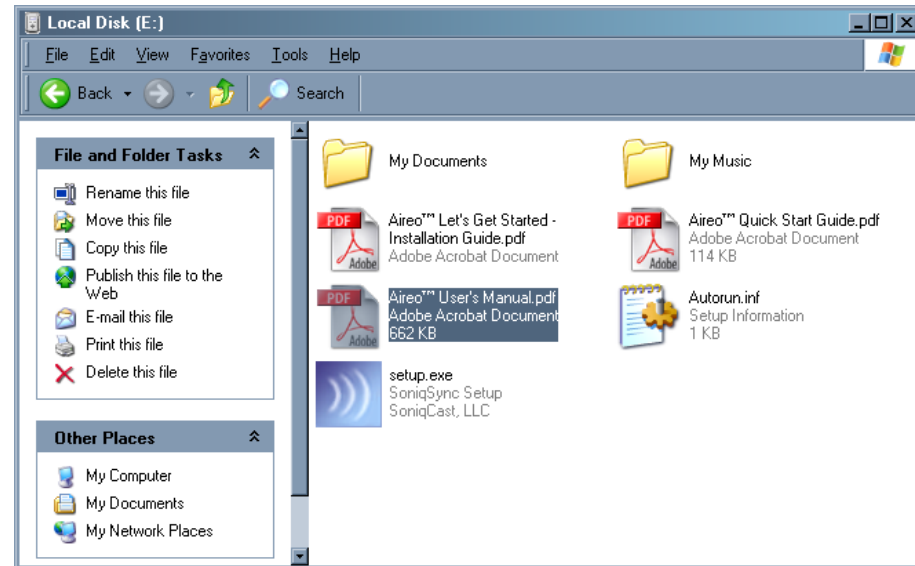
- **Desktop Player Docking Station** – is available to provide a power cradle for your Aireo™. The Player Dock also provides:
 - USB connectivity – for connecting to your PC
 - SPIDIF Digital Audio-Out jack – for digital home stereo
 - Headphone Jack – for computer input
 - Analog Line-Out jack – for external speakers

- **Vehicle Player Docking Station** – provides a power cradle for your Aireo in your car!
 - Power is provided through a 12V connector
 - Audio Output Tee connector
 - Enabled On/Off feature

Let's Get Started

Installation Procedure

1. Connect the AC Power Adapter to your Aireo player.
 - If your Aireo player is new, the internal battery may not be fully charged.
2. Connect your Aireo player to a USB port on your PC:
 - If the SoniqSync Installation Wizard does not automatically run on your PC then continue the following procedure. Otherwise, see: **The Installation Wizard.**
3. Verify that communications is established between your PC and your Aireo player:
 - Microsoft® Windows 2000 may automatically open a window for Aireo. If so, go to step #6.
4. Double-click on the My Computer icon on your desktop to verify the drive letter assigned for your Aireo player. It may appear to your PC as a Local Disk in My Computer.
5. Double-click on the  drive to view files and folders stored on your Aireo player.
6. Along with folders and this Let's Get Started - Installation Guide.pdf file, find the **setup.exe** file.
7. Double-click the  **setup.exe** file to start the SoniqSync Installation Wizard.



Let's Get Started (continued)

Application Software

The SoniqSync Installation Wizard allows the installation of the following:

- SoniqSync for Aireo
- Windows Media® Player – 9 Series (Required Installation)
- MUSICMATCH® Jukebox
- Documentation and Support information is provided for your use
- Installation may be cancelled at any time
- Software Installation may be uninstalled later if desired



SoniqSync is the link between your PC and your Aireo MP3 Player. SoniqSync allows you to put playlists of music created with your favorite playlist creation application on to your Aireo player. You can manually put playlists on your Aireo or let SoniqSync automatically manage the playlists on your player. SoniqSync works seamlessly with Microsoft® Windows Media Player, MUSICMATCH Jukebox, or other .m3u or .wpl playlists stored on your PC.

- Sync Playlist – Send a playlist from your PC to your Aireo player right away.
- Sync Scheduler – Manage Synchronization Schedules for your Aireo player.
- SoniqSync Players List – View the players associated with SoniqSync.
- Manage Mixes – Create mixes of playlists that you can send to your Aireo player.
- View Player – See music that is currently on your Aireo player.
- Upgrades – Upgrade the firmware on your Aireo player for the latest available features.

Let's Get Started (continued)



Windows Media® Player

The SoniqSync Installation Wizard will install Windows Media Player 9 Series. SoniqSync requires this version (or newer) of Windows Media Player. If Windows Media Player 9 Series (or newer) is already installed on your PC, the SoniqSync Installation Wizard will not re-install the application.



MUSICMATCH® Jukebox

The SoniqSync Installation Wizard also recommends the latest version of MUSICMATCH Jukebox. MUSICMATCH Jukebox is available for installation as an option. If a newer version of MUSICMATCH Jukebox is already on your PC, simply uncheck the selection box on the SoniqSync Installation Wizard installation window.

Note: For more information about Windows Media® Player or MUSICMATCH® Jukebox please review respective user guides or websites for assistance.

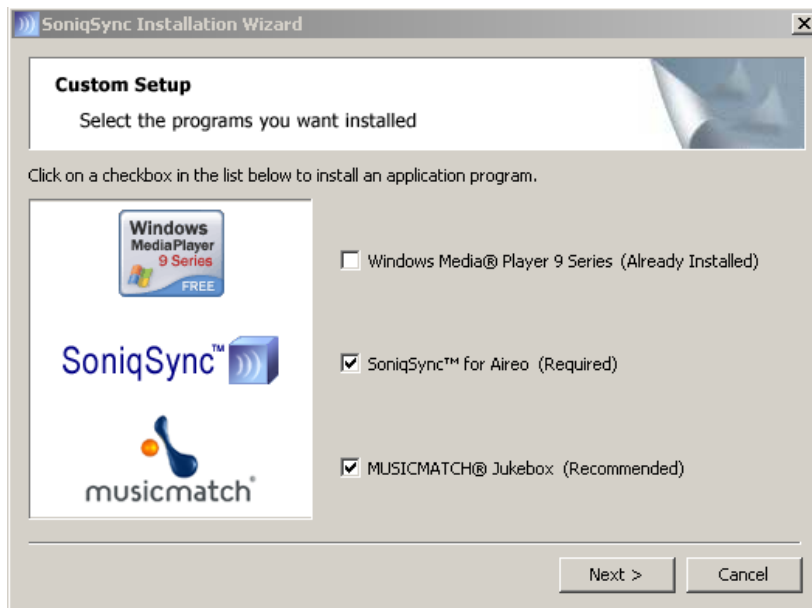
Note: If the SoniqSync Installation Wizard fails to begin the installation process, please visit us at www.soniqcast.com for further instruction and customer support.

Let's Get Started (continued)

The Installation Wizard

The SoniqSync Installation Wizard will guide you through the installation of applications on your PC for your Aireo player. With active Internet communication on your PC, SoniqSync will install the most recent version of Aireo player firmware to provide the latest available features for your Aireo player.

SoniqSync will also let you to add your Aireo player to the SoniqSync players list as part of the installation process. Once installed, you can begin to sync your favorite playlists to Aireo. Load SoniqSync on any host computer you want to associate with your Aireo player.



Step 1

On the Custom Setup window, select the applications you want to install. Remember that SoniqSync is required on your PC for Aireo as well as the latest Windows Media® Player application.

Press **Next >**.



Let's Get Started (continued)

Step 2

Begin the SoniqSync application installation by reviewing these information screens. Then press the 'Next' button to continue. Press **Next >**.

Step 3

Review the SoniqSync™ License Agreement. Select: "I accept the terms of the license agreement" to continue installation. Press **Next >**.

Step 4

Enter your User Name and Organization. You may choose to make SoniqSync available to all users of your PC, or just the current user. Press **Next >**.

Step 5

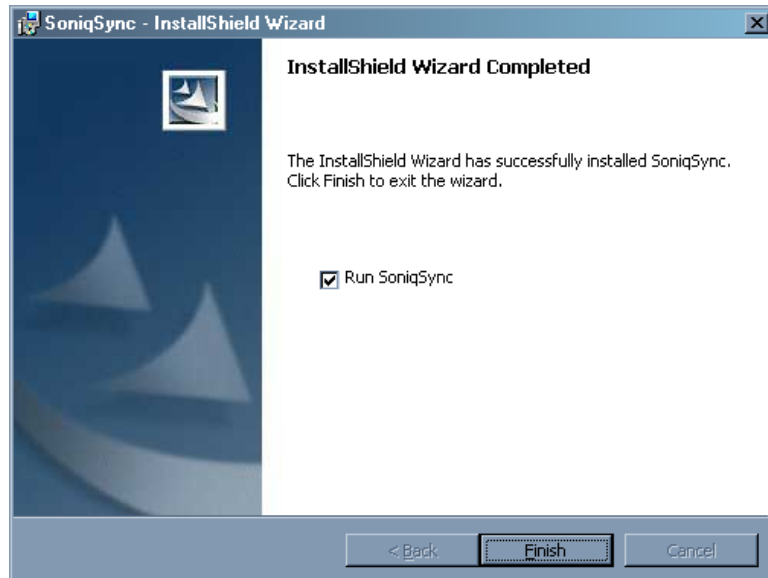
You may choose where you wish to install SoniqSync files on your computer. If the default file location is acceptable, press the 'Next' button. Press **Next >**.

Step 6

Before continuing the installation, review the information on the "Current Settings" view. You may change any settings by pressing the **< Back** button. If the information is correct, press the 'Install' button to continue.

Press **Install**.

Let's Get Started (continued)



Step 7


When the **Install** button is pressed, SoniqSync application files are loaded onto your PC. The SoniqSync InstallShield Wizard will indicate when it has completed installation.

Updates

A final window presents the opportunity to check the Internet for the latest updates for SoniqSync and your Aireo player. This box is checked "Yes" as a recommended choice.

Press **Finish**.

Step 8

When the **Finish** button is pressed, your SoniqSync application will be completely installed on your PC. SoniqSync will now automatically launch on your PC. You may also start SoniqSync by double-clicking on the  SoniqSync icon located on your desktop.

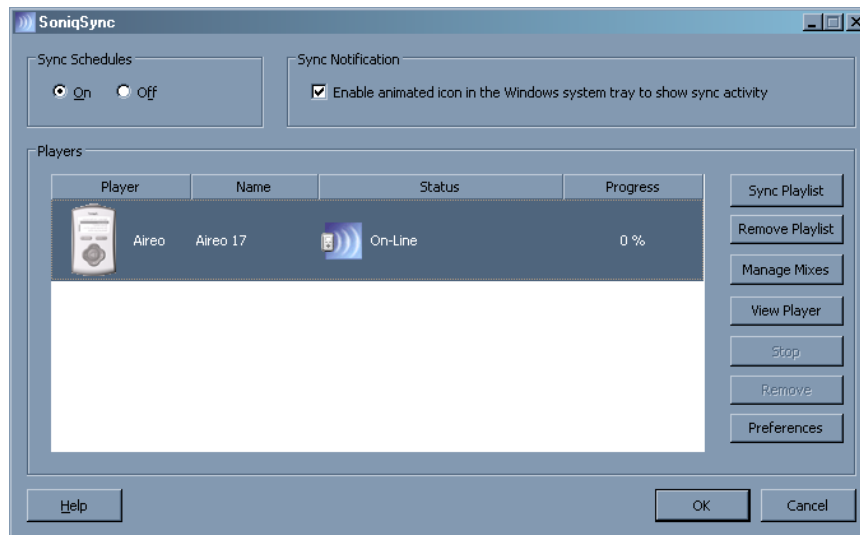
Loading Music on Aireo™

Using SoniqSync

Congratulations on successfully installing SoniqSync™ on your PC. The SoniqSync view offers a great starting point for using the SoniqSync application features.

Players

The Players panel on the SoniqSync view shows Aireo players that are associated to the SoniqSync Host. This panel displays the player 'Name' and its current 'Status' (whether it is On-Line or not).



Player Associations

Adding an Aireo player means that an association between your Aireo player and a SoniqSync Host (on a PC) has been added (or installed) on the SoniqSync Host. In addition, the same association is also added (or installed) on your Aireo player (See: the SoniqSync™ User's Guide for more information).

You may have more than one PC (SoniqSync Host) added to your player if you wish. Your SoniqSync Host may also have more than one Aireo player additions as well.

See the SoniqSync™ User's Manual for more information.

Loading Music on Aireo (continued)

Loading Music

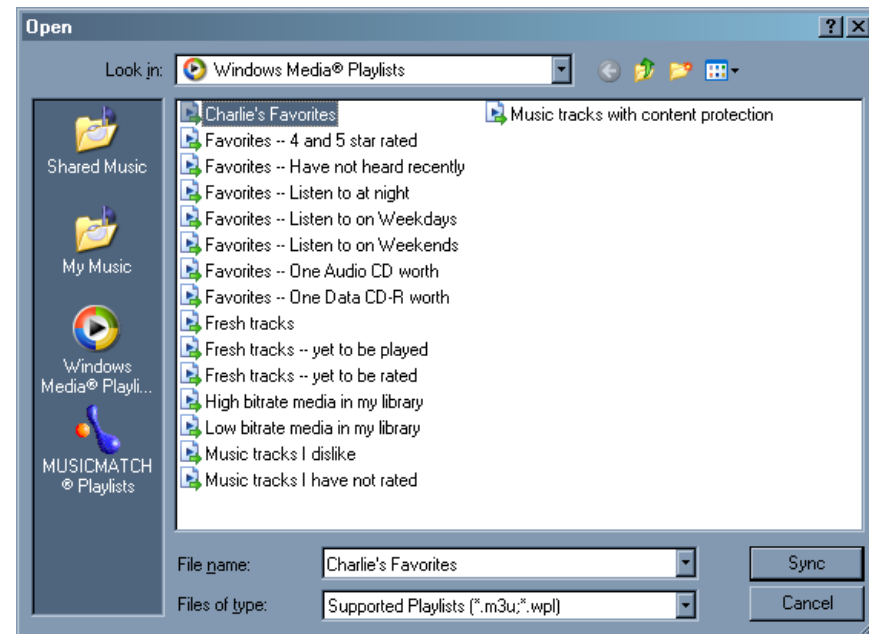
While your Aireo player is On-Line with your SoniqSync host, you may download your favorite music quickly using the Sync Playlist feature. It's as easy as 1 – 2 – 3!

Step 1 – Press the **Sync Playlist** button to the right of the Players panel on the SoniqSync view. This will open the Sync Playlist view to display playlists located on your PC.

Step 2 – You can display all of the .m3u or .wpl playlists stored on your PC. This includes playlists you have created in Microsoft® Windows Media Player Series 9 or MUSICMATCH® Jukebox.

Step 3 – Just select the playlist you want to send to your Aireo player and press the **Sync** button to start the transfer.

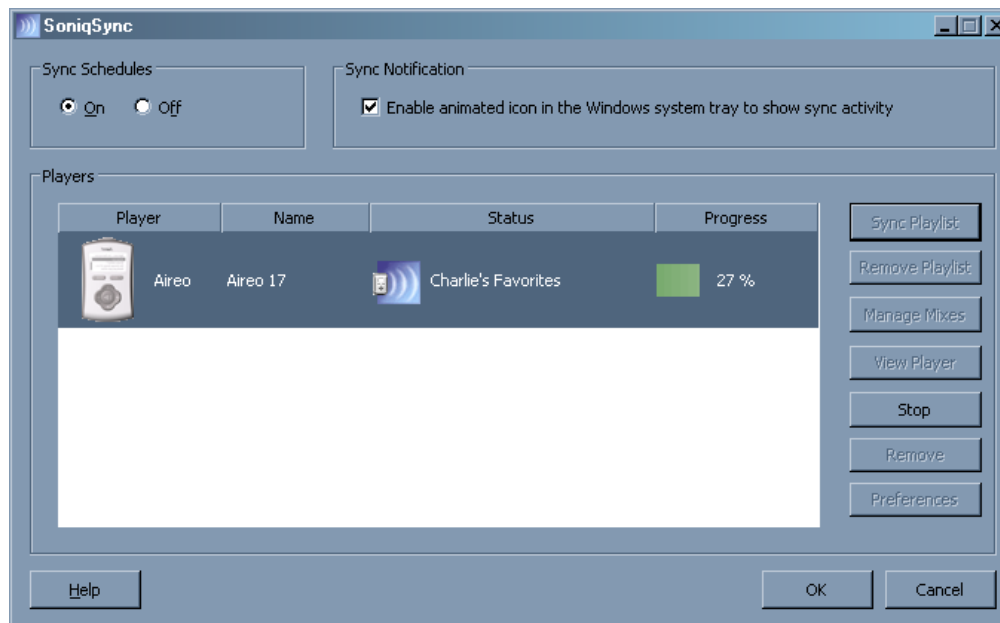
Note: Double-clicking on the playlist begins the sync process too.



Loading Music on Aireo (continued)

That's It!

During the sync process, you can keep track of sync progress right on the SoniqSync view. The Status column on the view display tells you the name of the transfer playlist and the Progress column displays a progress bar with the percent of completion. SoniqSync will notify you when the sync is complete with a popup display.



Wireless Access

For more information about wirelessly connecting to your SoniqSync host and other features offered in the SoniqSync application, be sure to review the SoniqSync™ User's Manual. Both the Aireo™ User's Manual and the SoniqSync™ User's Manuals are available by pressing the **Help** button on the SoniqSync view.

Upgrading

For the latest Software Updates and features for your SoniqSync application and Aireo player at: www.soniqcast.com.



Aireo Features

MP3 / WMA Player – Aireo will play music that is encoded in MP3, MP3 VBA, or WMA file format. Aireo will not be able to play music in any other format type. Future updates may allow expansion of new file format types. Visit Aireo Customer Support for the latest update information at: www.SonIQCast.com.

FM Stereo – Listen to FM radio on your Aireo player:

1. Highlight “FM Stereo” on the Main Menu view.
2. Press the PLAY/SELECT button on the keypad.
3. Use UP and DOWN buttons to change the volume level.
4. Use the RIGHT or LEFT buttons to change the FM radio station:
 - Press a button once to change the station manually.
 - Press a button for one second and let the SEEK function take you to the next available station.
 - Press and hold a button for 2 seconds to use the SCAN function. SCAN will find a station, play for a few seconds and continue on to the next station automatically until you press the button again to make it stop.

FM Transmitter – Play your Aireo music on your radio! In a car, on a stereo system, on a boom box, Aireo will transmit your music up to 15 feet. By default, Aireo is pre-set to transmit automatically on band frequency 88.1:

1. Tune your radio to station 88.1.
2. With music playing, unplug your headphones.
3. Enjoy Aireo music on your radio!



Aireo Features (continued)

File Caddy – Aireo File Caddy feature provides the ability to:

- Wirelessly connect to your PC Host through wireless (802.11) technology.
- **COMING SOON** - Transfer or Delete files on the Aireo player hard-drive (HDD) or SD/MMC flash memory card.
- **COMING SOON** - Transfer files from one Aireo player to another through wireless Player-2-Player connection.

SD/MMC Flash Storage – Aireo provides an SD Card slot on the player for an SD/MMC flash memory card to provide expanded music file storage.

- Aireo will accept 32 MB to 1GB SD/MMC flash memory cards.
- Add music to Aireo by plugging in music stored on your card.
- When you insert the SD/MMC Card into the player slot, Aireo will scan for music on the card.

Aireo Status Displays

Main application views display what is going on – on your Aireo player. The banner display is designed to provide the current status your Aireo system.

Aireo Features (continued)

Aireo Battery Status

Main view banner displays provide a battery status icon. The battery icon will change to indicate the strength of the battery as the player is used:

- Four Bars – Indicates a battery full.
- Three Bars – Indicates the battery is $\frac{3}{4}$ full.
- Two Bars – Indicates the battery is $\frac{1}{2}$ full.
- One Bar – Indicates the battery is $\frac{1}{4}$ full.
- No Bars – Indicates the battery is almost empty.

When external power plugged into the Aireo player, the battery enters a charging state. The battery icon will display a small 'lighting bolt'.

Current Status

Main view banner displays provide a status display for current activities on the player:

- PLAY – means that music is currently playing on Aireo™:
 - Press the PLAY/SELECT button on the MP3 Player view or the FM Stereo view to begin music play.
- LOAD – means that music is currently loading for play (MP3 Player view).
- MUTE – means that the radio on the FM Stereo view has been muted.



Aireo Features (continued)

- PAUSE – indicates that music play has been paused (MP3 Player view):
 - While music is playing, press the PLAY/SELECT button to pause music play.
 - Press the PLAY/SELECT button again to start music play.
- STOP – means that music play has been stopped (MP3 Player and FM Stereo views):
 - While music is playing, press the PLAY/SELECT button (and hold for 1 second) to stop music play.
 - Press the PLAY/SELECT button again to start music play.
- READY – means that a task ready to be performed (SoniqSync and File Caddy views).

FM Transmit Status

The MP3 Player view banner also displays an FM Transmitting icon when the FM Transmitter is transmitting music from your Aireo Player:

- The FM TX icon appears as small sound waves.
- This icon appears when headphones are unplugged from the player.
- The FM TX icon disappears when headphones are plugged back into your Aireo player.



Using Aireo™

- Turn Aireo On** Press the POWER button on the lower right hand side of the player.
- Turn Player Off** Press the POWER button and select either Standby or Off. Aireo will go into the Standby mode by default after 5 seconds.
- The MENU Button** Press the MENU button to display the Main Menu. Use the UP/DOWN buttons of the navigation keypad to scroll through and highlight entries on the menu list. Press the PLAY/SELECT button to select a highlighted menu item. To exit a menu mode, press the MENU button to go to the last menu. Press the MODE button to go back to the original application view.
- The MODE Button** Press the MODE button to change to another Aireo application. Applications include MP3 Player, FM Stereo, SoniqSync™, and File Caddy.
- Select a Playlist** Press the MENU button to enter the Main Menu, scroll down to "Browse" entry and press the PLAY/SELECT button. On the Browse view, you may look through Playlists, Genres, Artists, or Albums to find a group of songs you want to play. Scroll to the desired playlist and select it by using the PLAY/SELECT button. Your selection will begin to play.
- Adjust Volume** While music is playing, press the UP/DOWN buttons of the navigation keypad to adjust music volume level. A volume level bar will display your adjustment.

Using Aireo (continued)

Play a Song

Press the MENU button to enter the main menu, scroll down to "Play A Single" entry and press the PLAY/SELECT button. On the Play A Single view, you may look through Playlists, Genres, Artists, or Albums to find a specific song you want to play. Scroll to the desired song and select it using the PLAY/SELECT button. Your selection will begin to play.

Pause a Song

While music is playing, press the PLAY/SELECT button. A single press of the PLAY/SELECT button will pause music play. Pressing the PLAY/SELECT button again will re-start music play.

Stop a Song

While music is playing, press the PLAY/SELECT button for one second. A press (and hold) of the PLAY/SELECT button will stop music play. Pressing the PLAY/SELECT button again will begin music play from the beginning of the song.

Next Song

When listening to music on the MP3 Player view, press the RIGHT arrow button on the navigation keypad to hear the next song.

Start a Song Over

To start a song over, press the LEFT arrow button once on the navigation keypad. The song you are listening to will start play from the beginning.

Play a Previous Song

Press the LEFT button (twice) on the navigation keypad to select the previous song in your playlist.



Using Aireo (continued)

Turn the Backlight On/Off

The Aireo backlight display is automatically set to turn 'On' whenever you press a button on the player. It will turn 'Off' automatically too. To change backlight settings, review the Preferences – User Settings section of this user manual for more instruction.

Locking the Keypad (Coming Soon!)

Highlight "Lock Keypad" on the Main Menu list. Press the PLAY/SELECT button to lock keypad actions on Aireo™. To unlock the keypad, press any button, then press a RIGHT or LEFT button on the navigation keypad to toggle 'No' to 'Yes' on the Unlock Keypad display. Press the PLAY/SELECT button. The player keypad is now unlocked.

Listen to FM Stereo

To listen to the FM Stereo, press the MODE button until the "FM Stereo" application appears. Press RIGHT or LEFT buttons on the navigation keypad to change the radio station. Press once to SEEK for a station and twice to SCAN.

Transmit to Radio

Set your car stereo or boom-box to Aireo's default transmitter station 88.1. Aireo will automatically transmit music when you unplug the headphones from your player while music is playing. Aireo will play on your local radio! Review the Preferences section of this manual for FM Transmitter information.

Reset Player

If for some reason your player locks up or does not respond to the keypad, reset the player using the RESET switch. The RESET switch is located on the back of the player. Press using a paper clip.



MP3 Player Application

Playing Aireo Music

The MP3 Player application view is the heart of Aireo™. This view provides the ability listen to music residing on the Aireo player hard-drive or SD/MMC Card installed in the SD/MMC Slot. The MP3 Player application view displays information about the Aireo player system and music play.

Music Information

The MP3 Player panel display provides information about the music you are playing on your Aireo™:

- **Mix** – displays a name of the Playlist or Mix that is currently selected on Aireo.
- **Song** – displays the name of the song currently playing or ready for play.
- **Artist** – displays the name of the artist of the selected song.
- **Album** – displays the name of the music album of the selected song.
- **Genre** – displays the genre (type or style) of the music selected for play.

Note: Most music management applications like MUSICMATCH® Jukebox or Windows Media® Player provide a great deal of information detail that can be stored and read by your Aireo player. When information is available, it will be displayed on the MP3 Player view while a song is playing. If music detail is not provided with a song recording, information fields on the MP3 Player view will indicate an Un-Known status.



MP3 Player Application (continued)

Selecting Music

While on the MP3 Player view, pressing the MENU button will take you directly to the Main Menu view. The Main Menu view provides access to player preferences and all of the music on your Aireo player:

1. Press the MENU button to open the Main Menu view on your Aireo player.
2. From the Main Menu view you may highlight:
 - Browse
 - Play a Single
 - Preferences

Browse

From the Browse view, you may select a Playlist or a Mix of music you wish to play. The Mix of music may be a group of songs by a specific Artist, an Album, or a music Genre:

1. Highlight "Browse" on the Main Menu view.
2. Press the PLAY/SELECT button to enter the Browse view.
3. From the Browse view you may highlight:
 - Playlists
 - Genres
 - Artists
 - Albums
4. Press the PLAY/SELECT button to continue.



MP3 Player Application (continued)

Playlists

The Playlists view provides a list of playlists that currently resides on the player hard-drive or SD/MMC Card. You can select a playlist to play from this view:

1. Highlight "Playlists" on the Browse view.
2. Select a playlist from the Playlists menu.
3. Press the PLAY/SELECT button to begin playing music on the selected playlist:
 - You will return to the MP3 Player view.

Genres

The Genres view provides a list of music types that currently resides on the player hard-drive or SD/MMC Card. You can select a genre mix to play from this view:

1. Highlight "Genres" on the Browse view.
2. Select a Genre from the Genres menu.
3. Press the PLAY/SELECT button to begin playing music from the mix of songs provided by the selected genre:
 - You will return to the MP3 Player view.



MP3 Player Application (continued)

Artists

The Artists view provides a list of songs by a specific artist that currently resides on the player hard-drive or SD/MMC Card. You may select a mix to songs to play by a specific artist on this view:

1. Highlight "Artists" on the Browse view.
2. Select a specific artist from the Artists menu.
3. Press the PLAY/SELECT button to begin playing music from a mix of songs provided by the selected artist:
 - You will return to the MP3 Player view.

Albums

The Albums view provides a list of songs found on a specific album that currently resides on the player hard-drive or SD/MMC Card. You may select a mix to songs found on a specific album on this view:

1. Highlight "Albums" on the Browse view.
2. Select a specific album from the Albums menu.
3. Press the PLAY/SELECT button to begin playing music from a mix of songs provided by the selected Album:
 - You will return to the MP3 Player view.



MP3 Player Application (continued)

Play A Single

From the Play A Single view, you may select a specific song to play from a playlist, genre, artist, or album on your Aireo player:

1. Highlight "Play A Single" on the Main Menu view.
2. Press the PLAY/SELECT button to enter the Play A Single view.
3. From the Play A Single view you may highlight:
 - Playlists
 - Genres
 - Artists
 - Albums
4. Press the PLAY/SELECT button to continue.

Playlists

The Playlists view provides a list of playlists that currently resides on the player hard-drive or SD/MMC Card. You may select a song from one of the listed playlists to play:

1. Highlight "Playlists" on the Play A Single view.
2. Select a playlist from the Playlists menu.
3. Press the PLAY/SELECT button to open the selected playlist.

MP3 Player Application (continued)

4. Highlight the song you wish to play from the selected playlist.
5. Press the PLAY/SELECT button to play the song:
 - You will return to the MP3 Player view.

Genres

The Genres view provides a list of genres that currently resides on the player hard-drive or SD/MMC Card. You may select a song from one of the listed genres to play:

1. Highlight "Genres" on the Play A Single view.
2. Select a genre from the Genres menu.
3. Press the PLAY/SELECT button to open the selected genre.
4. Highlight the song you wish to play from the selected genre.
5. Press the PLAY/SELECT button to play the song:
 - You will return to the MP3 Player view.

Artists

The Artists view provides a list of artists that currently resides on the player hard-drive or SD/MMC Card. You may select a song from one of the listed artists to play:

1. Highlight "Artists" on the Play A Single view.

MP3 Player Application (continued)

2. Select an artist from the Artists menu.
3. Press the PLAY/SELECT button to open the selected artist.
4. Highlight the song you wish to play from the selected artist.
5. Press the PLAY/SELECT button to play the song:
 - You will return to the MP3 Player view.

Albums

The Albums view provides a list of albums that currently resides on the player hard-drive or SD/MMC Card. You may select a song from one of the listed albums to play:

1. Highlight "Albums" on the Play A Single view.
2. Select an album from the Albums menu.
3. Press the PLAY/SELECT button to open the selected album.
4. Highlight the song you wish to play from the selected album.
5. Press the PLAY/SELECT button to play the song:
 - You will return to the MP3 Player view.

Note: When a single song is finished playing on the MP3 Player view, music play continues from the originally selected Playlist or music mix.



Aireo Preferences

FM Transmitter – The default setting on Aireo for FM transmission is 88.1. On the FM Transmitter view, you may change the frequency setting to achieve clearer transmit reception.

You may change the FM Transmit frequency on Aireo one of two ways: Manually or Automatically.

Note: For best results, choose a frequency that is NOT in use by a commercial radio station.

Manually Adjust Frequency:

1. Go to the Main Menu – Preferences – FM Transmitter view on your Aireo player.
2. Highlight “Select FM TX frequency” on the view.
3. Press the PLAY/SELECT button on the navigational keypad.
4. Use RIGHT or LEFT buttons to change the FM Transmit frequency.

Automatically Adjust Frequency:

1. Go to Main Menu – Preferences – FM Transmitter view on your Aireo player.
2. Highlight “AutoSelect FM TX frequency” on the view.
3. Press the PLAY/SELECT button on the keypad.
4. Press the RIGHT or LEFT buttons to scan for the next available station frequency automatically. Simply adjust your receiving radio the new station frequency.



Aireo Preferences (continued)

Change the FM Transmitter Level – Changing the Level setting optimizes the amplitude of the FM Transmitter audio sent to your radio.

1. Go to the Main Menu – Preferences – FM Transmitter view on your Aireo player.
2. Highlight “Level” on the view.
3. Use RIGHT or LEFT buttons to change the setting from 1 to 6.

Note: The optimal Level setting may vary depending on your music content. If audible distortion is present, reduce the Level setting.

SoniqSync – This SoniqSync view provides setting that allow SoniqSync scheduled synchronization to be active at times you want.

Check-In Interval:

1. Go to Main Menu – Preferences – SoniqSync view on your Aireo player.
2. Highlight “Check-In Interval” on the menu.
3. Use the RIGHT or LEFT buttons to change the interval setting:
 - The default setting is 2 hours
 - You may choose ‘Disable’, or time settings: 30min, 60min, 2hrs, 4hrs, 6hrs, 10hrs, 24hrs, 36hrs



Aireo Preferences (continued)

PlayBack– Play settings include two features: Shuffle and AutoStart.

Shuffle:

The Shuffle feature allows random play of songs in a playlist when 'ON'.

1. Go to Main Menu – Preferences – PlayBack view on your Aireo player.
2. Highlight "Shuffle" on the view.
3. Use the RIGHT or LEFT buttons to change 'On' to 'Off'.

AutoStart:

When AutoStart is 'ON', music play begins automatically when Aireo is powered-on.

1. Go to Main Menu – Preferences – PlayBack view on your Aireo player.
2. Highlight "AutoStart" on the view.
3. Use the RIGHT or LEFT buttons to change 'On' to 'Off'.



Aireo Preferences (continued)

Audio – Audio settings include features to assist your music play environment.

Equalizer – Equalizer settings let you adjust the sound environment for the style of music you are listening to.

Create your own sound environment using custom Equalizer settings:

1. Go to Main Menu – Preferences – Audio view on your Aireo player.
2. Highlight "Equalizer" on the menu list. Press the PLAY/SELECT button to go to the Equalizer view.
3. Use the RIGHT or LEFT buttons to select the band on the Equalizer display you want to adjust.
4. Use the UP or DOWN buttons to adjust the 'gain' on the equalizer band you have selected.
5. Press the PLAY/SELECT button, or leave the view to activate your custom equalizer settings.

SPDIF – This turns the SPDIF digital output feature ON or OFF on your Aireo player. When your Aireo is connected to an external stereo system, be sure to turn this setting to ON for digital output.

1. Go to Main Menu – Preferences – Audio view on your Aireo player.
2. Highlight "SPDIF" on the menu list. Use the RIGHT or LEFT buttons to toggle "Off" to "On" or "On" to "Off".



Aireo Preferences (continued)

Display – Display settings let you adjust the Backlight Timeout, Backlight Intensity, and LCD Contrast.

Backlight Timeout:

The Backlight Timeout setting controls the length of time the LCD backlighting will remain 'ON' while using Aireo™. Remember that a long backlight timeout will shorten player battery life.

1. Go to Main Menu – Preferences – Display view on your Aireo player.
2. Highlight "Backlight Timeout" on the view.
3. Use the RIGHT or LEFT button to change the time length:
 - Timing begins at 5 seconds and increases in 5 second increments
 - You may also choose 'Always On' or 'Always Off'

Backlight Intensity:

The Backlight Intensity setting controls how bright the LCD backlighting will be on Aireo™. Remember that brighter intensities will shorten player battery life.

1. Go to Main Menu – Preferences – Display view on your Aireo player.
2. Highlight "Backlight Intensity" on the view.
3. Use the RIGHT or LEFT button to change the light intensity:
 - The light intensity range is 1 to 15 (15 being the brightest)



Aireo Preferences (continued)

LCD Contrast:

The LCD Contrast setting controls the sharpness of the LCD display.

1. Go to Main Menu – Preferences – Display view on your Aireo player.
2. Highlight “LCD Contrast” on the view.
3. Use the RIGHT or LEFT buttons to change the contrast setting:
 - The LCD Contrast range is 1 to 10

Shutdown – The Shutdown feature allows you to set the default state your Aireo player goes into when the POWER button is pressed on the side of the player.

Default:

1. Go to Main Menu – Preferences – Shutdown view on your Aireo player.
2. Highlight the “Default” setting on the view.
3. Use the RIGHT or LEFT buttons to change the default shutdown setting:
 - The setting will toggle between “Standby” and “Off”
 - **Standby** – means that the player will not completely shut down. When the POWER button is pressed again, the player opens to the last view you were using.
 - **Off** – means the player will shut down completely. The player system will power up normally.



Aireo Preferences (continued)

About – The About view provides information about the Aireo player. Information on the About view includes:

- The firmware Version number
- Player MAC address

FM Stereo Application

FM Stereo Music

The FM Stereo application provides the ability listen to local FM radio. The FM Stereo application view provides a station selector display that lets you choose the FM radio station you want to listen to. You can manually select a station, SEEK for a radio station, or let Aireo SCAN through radio stations until you find the one you want:

Playing the Radio

1. Press the MODE button to open the FM Stereo application view on your Aireo player.
2. Press the PLAY/SELECT button to take music play out of the default MUTE mode:
 - The station selector displays the current station that is selected
 - The view banner will also display the radio station currently playing
3. Pressing the PLAY/SELECT button once will MUTE radio music play:
 - Press the PLAY/SELECT button again to play

Manual Select Feature

You can choose the station you want to listen to manually:

1. Use the RIGHT or LEFT buttons (press once) to change the radio station on the display.
2. Aireo will PLAY any station you select.



FM Stereo Application (continued)

SEEK Feature

You can choose the station using the SEEK feature:

- Use the RIGHT or LEFT buttons (press and hold for 1 second) to SEEK for a radio station on the display:
 - SEEK will automatically select and play the next available radio station
 - The view banner will display SEEK (while in a SEEK mode) in the upper right-hand corner of the display

SCAN Feature

You can choose the station using the SCAN feature:

- Use the RIGHT or LEFT buttons (press and hold for 2 seconds) to activate the SCAN feature to find a radio station:
 - The view banner will display SCAN (while in a SCAN mode) in the upper right-hand corner of the display
 - Press the PLAY/SELECT button to exit the radio station SCAN mode

SoniqSync Application

Connecting Wirelessly

The SoniqSync application view on your Aireo player provides the ability for a user to wirelessly connect to the SoniqSync application installed on a host PC. Connecting wirelessly through a wireless access point (WAP) allows you to perform many of the features SoniqSync provides like wirelessly and automatically transferring music to your Aireo player. See the SoniqSync™ User's Manual for more information about the SoniqSync application installed on your PC.

- **Dock to PC** – Set up a wireless connection to your PC SoniqSync host.
- **Setup PCs** – Manage PC to player associations (PCs must have SoniqSync installed to be associated):
 - **List PCs** – List the PC associations created for your Aireo to sync from
 - **Add PC** – Associate your Aireo player to a PC (that has SoniqSync installed)
 - **Delete PC** – Remove a PC association
- **Setup Networks** – Manage network to player associations:
 - **List Network** - Associate your Aireo player with a wireless network
 - **Delete Network** – Remove a network association from your Aireo player
 - **Test Network** – Measure the signal strength to a network your Aireo player can detect

Note: To associate a PC to your Aireo player, the SoniqSync application must be installed and running on your host PC.

SoniqSync Application (continued)

Dock To PC

The Dock to PC feature allows you to connect to your host PC wirelessly through a wireless access point on a network:

1. Press the MODE button to open the SoniqSync application view on your Aireo player.
2. Highlight "Dock to PC" on the menu.
3. Press the PLAY/SELECT button to go to the "Select Dock PC" view.
4. Select the associated PC that you want to connect to. Press the PLAY/SELECT button.
 - Aireo begins Searching for Networks on which your selected PC host may be found
 - Aireo locates the host PC and connects to the PC

Note: The SoniqSync application installed on your host PC must be active to receive your Aireo player connection.

- If there is no PC association with your Aireo player, then Aireo cannot connect to a SoniqSync application. See: Add PC for information about associating a PC to your Aireo player.
- If the SoniqSync application is not active on the host PC you are trying to connect with, a "Wireless Dock Failed – Unable to locate PC" message will appear on your player screen.
- Once connected to your PC host, your Aireo player will display "Docked to <HostName> on network <NetworkName>".
- You may disconnect from your host PC connection by pressing any button on your Aireo player.



SoniqSync Application (continued)

PC Setup

On the PC Setup view, you can manage PC associations with your Aireo player. This view allows you to Enable, Disable, Add, or Delete any of the PC association to your Aireo player:

1. Press the MODE button to open the SoniqSync application view on your Aireo player.
2. Highlight "PC Setup" on the menu list.
3. Press the PLAY/SELECT button to go to the "PC Setup" view.
4. From the PC Setup view select:
 - List PC
 - Add PC
 - Delete PC
5. Press the PLAY/SELECT button to continue.

List PC

The List PC view displays a list of all host PC associations that have been added to your Aireo player. In addition, you may manage automatic downloads from a host PC by Enabling or Disabling a PC association.

- When enabled, a host PC may synchronize your playlists automatically using the Sync Schedule feature on your host SoniqSync application. See the SoniqSync User's Manual for more information about Sync Scheduling.
- When disabled, a host PC may not automatically send scheduled syncs to your Aireo player. You may still manually connect and synchronize playlists to your player while a host association is disabled.



SoniqSync Application (continued)

Using the List PC view:

1. Go to SoniqSync application – PC Setup view on your Aireo player.
2. Highlight “List PC” on the menu list.
3. Press the PLAY/SELECT button to go to the “List PC” view.
4. Highlight a listed PC association on the view.
5. Use the RIGHT or LEFT buttons to change the Enable/Disable setting:
 - The buttons will toggle between Enable and Disable.

Note: Enabling a PC association causes Aireo to attempt connection to the associated PC when performing a Sync Check.

- If no PC associations exist on your Aireo player, then a “No PCs Configured – Use Add PCs” message will be displayed on the view.

Add PC

Adding a PC on your Aireo player means that an association with the SoniqSync Host on a PC has been added to your Aireo player. In addition, your Aireo player association is also added (or installed) on the PC SoniqSync Host (See: the SoniqSync™ User’s Guide for more information).



You may have more than one PC (SoniqSync host association) added to your player if you wish. Your SoniqSync host may also have more than one Aireo player associations as well.

SoniqSync Application (continued)

Note: A PC association must be added to your Aireo player before you are allowed to connect to the host PC.

To Add a PC on Aireo™:

1. Go to SoniqSync application – PC Setup view on your Aireo player.
2. Highlight “Add PC” on the menu list.
3. Press the PLAY/SELECT button to begin the “Add PC” process:
 - Aireo begins ‘Searching for Networks’ automatically
4. Highlight the network your host PC may be located on from the Select Network list. Press the PLAY/SELECT button:
 - Aireo connects to the network by obtaining an IP address from a DHCP server
 - A “Network connection failed” message will be displayed if Aireo cannot connect to the network
 - Once connected, Aireo locates all of the host PCs available on the network with active SoniqSync applications
5. Highlight the host PC you want to connect to on the Select PC list. Press the PLAY/SELECT button:
 - If the connection to the PC Host is NEW, a “Finish Installation on PC” will be displayed on the Aireo player view. Go to the host PC and Add your Aireo player by pressing “Yes” on the SoniqSync – Install Player message box (See: SoniqSync™ User’s Manual for more information).



SoniqSync Application (continued)

- If the association is already established, an “Addition Complete” message will be displayed on the Aireo player view.
- If the host PC may not be reached (i.e. lost connection), a “Connection Failed” message will be displayed on the Aireo player view.

Note: You may cancel the Add PC process at any time. If cancelled, Aireo will display an “Aborting Installation” message and return to the Setup PC view.

Delete PC

You can remove a host PC association from your Aireo player if you wish:

1. Go to SoniqSync application – PC Setup view on your Aireo player.
2. Highlight “Delete PC” on the menu list.
3. Press the PLAY/SELECT button to go to the “Delete PC” view.
4. Highlight the host PC association you want to delete on the Delete PC view. Press the PLAY/SELECT button to continue.
 - A confirmation window will verify your request.
 - Use the RIGHT or LEFT button to change ‘No’ to ‘Yes’.
5. Press the PLAY/SELECT button to delete the PC. Aireo will return you to the Setup PC view.



Note: Deleting a PC on Aireo cannot be undone. You may add the host PC again if you wish.

SoniqSync Application (continued)

Network Setup

On the Network Setup view, you can manage network associations with your Aireo player. You may view network settings and test network signal strength for networks that your Aireo player can communicate:

1. Press the MODE button to open the SoniqSync application view on your Aireo player.
2. Highlight "Network Setup" on the menu list.
3. Press the PLAY/SELECT button to go to the "Network Setup" view.
4. From the Network Setup view select:
 - List Networks
 - Delete Networks
 - Test Network
5. Press the PLAY/SELECT button to continue.

List Networks

The List Networks view displays a list of all network associations that have been added to your Aireo player. You may also review setting details for each network.



SoniqSync Application (continued)

View network settings on the List Networks view:

1. Go to SoniqSync application – Network Setup view on your Aireo player.
2. Highlight “List Networks” on the menu list.
3. Press the PLAY/SELECT button to go to the “List Networks” view:
 - All Network associations are listed
 - The Wired Equivalent Privacy (WEP) protocol On/Off setting is shown:
 - WEP ‘On’ indicates that the network will require special configuration adjustments to connect (Advanced Settings will be available in future SoniqSync updates)
 - WEP ‘Off’ is a network setting that Aireo will be able to connect to without special configuration adjustment
 - Dynamic Host Configuration Protocol (DHCP) On/Off is also displayed:
 - DHCP ‘On’ indicates that the network DHCP Server will be able to provide an IP address to Aireo when connecting to the network
 - DHCP ‘Off’ indicates that the network will not provide an IP address. Special configuration adjustments will be required to connect your Aireo player (Advanced Settings will be available in future SoniqSync updates)

Note: Currently, Aireo cannot connect to a wireless network that requires WEP or that does not support DHCP. WEP and DHCP network configuration is



Aireo™

expected to be available in future Aireo Firmware updates. Visit our website for product update information at www.SoniqCast.com.

SoniqSync Application (continued)

4. Press the PLAY/SELECT button to view DHCP settings for the highlighted network:
 - This view is Read-Only
 - The current DHCP status (Enabled/Disabled) is shown
 - The network IP address is displayed
 - The network Subnet Mask is displayed
5. Press any button to leave this display view.

Delete Networks

You can remove a network association from your Aireo player if you wish:

1. Go to SoniqSync application – Network Setup view on your Aireo player.
2. Highlight “Delete Networks” on the menu list.
3. Press the PLAY/SELECT button to go to the “Delete Networks” view.
4. Highlight the Network association you want to delete from the Delete Networks view.
5. Press the PLAY/SELECT button to continue:
 - A confirmation window will verify your request
 - Use the RIGHT or LEFT button to change ‘No’ to ‘Yes’
6. Press the PLAY/SELECT button to delete the network. Aireo will return you to the Setup Network view



SoniqSync Application (continued)

Note: Deleting a network on Aireo cannot be undone. The network however, will be added back to your player automatically by connecting to the network again.

Test Networks

You can verify the WiFi signal strength for network association to your Aireo player on the Test Network view:

1. Go to SoniqSync application – Network Setup view on your Aireo player.
2. Highlight “Test Networks” on the menu list.
3. Press the PLAY/SELECT button to go to the “Test Networks” view:
 - Aireo will begin ‘Searching for Networks’
 - A list of detected networks will be displayed on the ‘Select Network’ view
4. Highlight the Network association you want to test.
5. Press the PLAY/SELECT button to continue:
 - Aireo will connect to the network
 - The connection status and network IP address will be displayed
 - A status bar will display the current WiFi signal strength level
6. Press any button to return to the Test Networks view.

File Caddy Application

Managing Files

The File Caddy application view on your Aireo player provides the ability for a user to connect wirelessly to the SoniqSync application installed on a host PC. Connecting wirelessly through a wireless access point (WAP) allows you to perform many of the available features SoniqSync provides like transferring music to your Aireo player. See the SoniqSync™ User's Manual for more information about the SoniqSync application installed on your PC.

- **Dock to PC** – Connect to your PC (with SoniqSync installed on the PC)
- **Dock to Peer** – Connect your Aireo player to another Aireo player (This feature will be coming soon in a future Aireo Firmware update)

Dock To PC

The Dock to PC feature on the File Caddy application view is similar to the Dock to PC feature located on the SoniqSync application view. The Dock to PC feature allows your Aireo player to connect to a host PC wirelessly through a wireless access point on a network:

1. Press the MODE button to open the File Caddy application view on your Aireo player.
2. Highlight "Dock to PC" on the menu.
3. Press the PLAY/SELECT button to go to the "Select Dock PC" view.
4. Select the associated PC that you want to connect your Aireo player to.
5. Press the PLAY/SELECT button.
 - Aireo begins searching for the networks on which your selected PC host may be found



File Caddy Application (continued)

- Aireo locates the host PC and connects to the PC

Note: The SoniqSync application installed on your host PC must be active to receive your Aireo player connection.

- If there is no host PC association with your Aireo player, then no hosts will be available for you to connect. See Add PC for information about associating a PC to your Aireo player.
- If the SoniqSync application is not active on the host PC you are trying to connect with, a “Wireless Dock Failed – Unable to locate PC” message will appear on your player screen.
- Once connected to your PC host, your Aireo player will display “Docked to <HostName> on network <NetworkName>”.
- You may disconnect from your host PC connection by pressing any button on your Aireo player.

Dock To Peer

The Dock to Peer feature will be available soon on the File Caddy application view. The Dock to Peer feature will allow your Aireo player to connect directly to another Aireo player using Ad-Hoc mode communication. This feature will be available in a future Aireo Firmware update.

Appendix A - Tech Spec

Aireo™ Technical Specifications

Platform Specifications:

File Support

Playback Formats

- MP3 (at 8,16,22.05,24,32,44.1 and 48 kHz)
- MP3 VBA
- WMA (at 16, 22.05, 24, 32, 44.1, and 48 kHz)

Software

Operating System

- WinCe.Net 4.0

Application Software

- SoniqSync™ Music Manager

Appendix A - Tech Spec

Hardware Specification:

Hardware Specification

Size	<ul style="list-style-type: none">• 2.68 in (W) x 4.58 in (H) x 0.87 in (D) or 68.1 mm x 116.3 mm x 22.1 mm
Weight	<ul style="list-style-type: none">• 8,0 oz or 226 gms
Memory	<ul style="list-style-type: none">• 32 MB SDRAM buffer
Capacity	<ul style="list-style-type: none">• 1.5 GB hard drive
Memory Slot type	<ul style="list-style-type: none">• SD/MMC Card
Flash Storage	<ul style="list-style-type: none">• SD/MMC – 32 MB to 1GB Card Capacities Accepted
WiFi Interface	<ul style="list-style-type: none">• Automatic rate scaling: 1, 2, 5.5, 11 Mbps
Communication Interfaces	<ul style="list-style-type: none">• USB 1.1• 802.11B
Battery type	<ul style="list-style-type: none">• Lithium-ion battery (non-removable)

Appendix A - Tech Spec

Hardware Specification (continued)

Battery Life

Up to 8 hours of continuous playback from a fully charged battery. Based on continuous playback of tracks encoded at 128 kbps. Playback time may be reduced by:

- playing tracks encoded at bit-rates greater than 128Kbps
- playing WMA music files
- transmitting music
- long LCD backlight timeout setting
- wireless sync or transfer process

Battery Charging

- About 4 hours

Audio Specifications:

Audio Inputs

FM Receiver

- Frequency Band: 87.9 – 107.9 MHz, digital tuned
- Modulation: FM Stereo
- Distortion: 0.5%
- Frequency Response: 50 – 15,000 Hz (+/- 3 dB)
- Stereo Separation: 30 dB
- Scan, Seek

Appendix A - Tech Spec

Audio Specifications (continued):

Audio Outputs

Headphone Output

- Rated Impedance: 32 ohms
- Power Output: 60 mW
- Frequency Response: 20 – 20,000 Hz (+/- 3 dB)
- THD: -75 dB

Analog Line Output

- Rated Impedance: 10 Kohms
- Frequency Response: 20 – 20,000 Hz (+/- 3 dB)
- THD: -75 dB

Digital Output

- SPDIF
- Coax interface in docking station accessory

FM Transmitter

- Frequency Band: 88.1 – 107.9 MHz, digital tuned
- Modulation: FM Stereo
- Transmit Power: FCC Part 15 limited
- Range: Up to 30 ft
- Frequency Response: 30 – 15,000 Hz (+/- 3 dB)
- Stereo Separation: > 40 dB
- Signal Distortion: 0.3 %
- Automatic Free Band Scan



Appendix B – License Agreement

Aireo™ License Agreement

SoniqCast, LLC
End-User Software License
Version 1.0, January, 2004

PLEASE READ THIS DOCUMENT CAREFULLY BEFORE INSTALLING THE SOFTWARE ON THE ACCOMPANYING MEDIA OR USING THE ACCOMPANYING PLAYER. THE FOLLOWING IS A LEGAL AGREEMENT BETWEEN YOU, AS LICENSEE OF THE SOFTWARE ON THE ACCOMPANYING MEDIA AND INSTALLED ON THE PLAYER ACCOMPANYING THIS AGREEMENT, AND SONIQCAST, LLC. BY INSTALLING OR USING THE SOFTWARE, YOU AGREE TO BE BOUND BY THE TERMS OF THIS AGREEMENT. IF YOU DO NOT AGREE TO THE TERMS OF THIS AGREEMENT, DO NOT INSTALL OR USE THE SOFTWARE AND INDICATE YOUR LACK OF AGREEMENT BELOW, AT THE END OF THIS AGREEMENT. THEN PROMPTLY RETURN THE SOFTWARE, ALL RELATED DOCUMENTATION AND ACCOMPANYING ITEMS TO THE PLACE OF ACQUISITION FOR A REFUND. AS USED HEREIN, SOFTWARE INCLUDES ALL RELATED DOCUMENTATION AND ACCOMPANYING ITEMS INCLUDING, BUT NOT LIMITED TO, THE EXECUTABLE PROGRAMS, DRIVERS, LIBRARIES AND DATA FILES ASSOCIATED WITH SUCH PROGRAMS.

- 1) Grant of License. The Software is licensed, not sold, to you for use only under the terms of this Agreement. You own the disk or other media on which the Software is originally or subsequently recorded or fixed; but as between you and SoniqCast (and, to the extent applicable, its licensors), SoniqCast retains all title to and ownership of the Software and reserves all rights not expressly granted to you. The license under this Section 1 is conditioned upon your compliance with all of your obligations under this Agreement. SoniqCast grants to you the right to use all or a portion of this Software provided that (a) the Software is not distributed for profit; (b) the Software is used only in conjunction with the particular SoniqCast product with which or for which it was sold ; (c) the Software may NOT be modified; (d) all copyright notices and other legal notices are maintained on the Software; and (e) the licensee/end-user agrees to be bound by the terms of this Agreement.
- 2) For Use on a Single Computer. The Software may be used only on a single computer by a single user at any time. You may transfer the machine-readable portion of the Software from one computer to another computer, provided that (a) the Software (including any portion or copy thereof) is erased from the first computer and (b) there is no possibility that the Software will be used on more than one computer at a time. For player software, the single computer is the CPU of the player unit.
- 3) Stand-Alone Basis. You may use the Software only on a stand-alone basis, such that the Software and the functions it provides are accessible only to persons who are physically present at the location of the computer on which the Software is loaded. You may not allow the Software or its functions to be accessed remotely, or transmit all or any portion of the Software through any network or communication line.
- 4) Copyright. The Software is owned by SoniqCast and/or its licensors and is protected by United States copyright laws and international treaty provisions. You may not remove the copyright notice from any copy of the Software or any copy of the written materials, if any, accompanying the Software.
- 5) One Archival Copy. You may make one archival copy of the machine-readable portion of the Software for backup purposes only in support of your use of the Software on a single computer, provided that you reproduce on the copy all copyright and other proprietary rights notices included on the originals of the Software.



Appendix B

Aireo™ License Agreement (continued):

- 6) No Merger or Integration. You may not merge any portion of the Software into, or integrate any portion of the Software with, any other program, except to the extent expressly permitted by the laws of the jurisdiction where you are located. Any portion of the Software merged into or integrated with another program, if any, will continue to be subject to the terms and conditions of this Agreement, and you must reproduce on the merged or integrated portion all copyright and other proprietary rights notices included in the originals of the Software.
- 7) Transfer of License. You may transfer your license of the Software, provided that (a) you transfer all portions of the Software or copies thereof, (b) you do not retain any portion of the Software or any copy thereof, and (c) the transferee reads and agrees to be bound by the terms and conditions of this Agreement.
- 8) Limitations on Using, Copying, and Modifying the Software. Except to the extent expressly permitted by this Agreement or by the laws of the jurisdiction where you acquired the Software, you may not use, copy or modify the Software. Nor may you sub-license any of your rights under this Agreement. You may use the Software for your personal use only, and not for public performance or for the creation of publicly displayed audiovisual works.
- 9) Decompiling, Disassembling, or Reverse Engineering. You acknowledge that the Software contains trade secrets and other proprietary information of SoniqCast and its licensors. Except to the extent expressly permitted by this Agreement or by the laws of the jurisdiction where you are located, you may not decompile, disassemble or otherwise reverse engineer the Software, or engage in any other activities to obtain underlying information that is not visible to the user in connection with normal use of the Software. In particular, you agree not for any purpose to transmit the Software or display the Software's object code on any computer screen or to make any hardcopy memory dumps of the Software's object code. If you believe you require information related to the interoperability of the Software with other programs, you shall not decompile or disassemble the Software to obtain such information, and you agree to request such information from SoniqCast at the address listed below. Upon receiving such a request, SoniqCast shall determine whether you require such information for a legitimate purpose and, if so, SoniqCast will provide such information to you within a reasonable time and on reasonable conditions. In any event, you will notify SoniqCast in writing of any information derived from reverse engineering or such other activities, and the results thereof will constitute the confidential information of SoniqCast that may be used only in connection with the Software.
- 10) Termination. The license granted to you is effective until terminated. You may terminate it at any time by returning the Software (including any portions or copies thereof) to SoniqCast or the place where you purchased the Software or related products. The license will also terminate automatically without any notice from SoniqCast if you fail to comply with any term or condition of this Agreement. You agree upon such termination to return the Software (including any portions or copies thereof) to SoniqCast. Upon termination, SoniqCast may also enforce any rights provided by law. The provisions of this Agreement that protect the proprietary rights of SoniqCast will continue in force after termination.
- 11) No Warranty. SoniqCast does not warrant that the functions contained in the Software will meet your requirements or that the operation of the Software will be uninterrupted, error-free or free from malicious code. For the purposes of this paragraph, "malicious code" means any program code designed to contaminate other computer programs or computer data, consume computer resources, modify, destroy, record, or transmit data, or in some other fashion usurp the normal operation of the computer, computer system, or computer network, including viruses, Trojan horses, droppers, worms, logic bombs, and the like.
- 12) Indemnification by You. If you use or distribute the Software in violation of this Agreement, you hereby indemnify, hold harmless and defend SoniqCast from and against any and all claims or lawsuits, including attorney's fees and costs that arise, result from or are connected with the use or distribution of the Software in violation of this Agreement.



Appendix B

Aireo™ License Agreement (continued):

- 13) NO WARRANTY. THE SOFTWARE IS PROVIDED AS-IS WITHOUT WARRANTY OF ANY KIND, EITHER EXPRESS OR IMPLIED, INCLUDING, BUT NOT LIMITED TO, ANY IMPLIED WARRANTIES OF MERCHANTABILITY OR FITNESS FOR A PARTICULAR PURPOSE, TITLE OR NONINFRINGEMENT. SONIQCAST IS NOT OBLIGATED TO PROVIDE ANY UPDATES, UPGRADES OR TECHNICAL SUPPORT FOR THE SOFTWARE. Further, SoniqCast shall not be liable for the accuracy of any information provided by SoniqCast or third party technical support personnel, or any damages caused, either directly or indirectly, by acts taken or omissions made by you as a result of such technical support. You assume full responsibility for the selection of the Software to achieve your intended results, and for the installation, use and results obtained from the Software. You also assume the entire risk as it applies to the quality and performance of the Software. Should the Software prove defective, you (and not SoniqCast, or its distributors or dealers) assume the entire cost of all necessary servicing, repair or correction. Some countries/states do not allow the exclusion of implied warranties, so the above exclusion may not apply to you. SoniqCast disclaims all warranties of any kind if the Software was customized, repackaged or altered in any way by any third party other than SoniqCast.
- 14) LIMITATION OF REMEDIES AND DAMAGES. IN NO EVENT WILL SONIQCAST OR ITS LICENSORS BE LIABLE FOR ANY INDIRECT, INCIDENTAL, SPECIAL, PUNITIVE OR CONSEQUENTIAL DAMAGES, OR FOR ANY BODILY INJURY (INCLUDING DEATH) TO ANY PERSONS CAUSED BY SONIQCAST'S NEGLIGENCE, OR FOR ANY LOST PROFITS, LOST SAVINGS, LOSS OF USE, LOST REVENUES OR LOST DATA ARISING FROM OR RELATING TO THE SOFTWARE OR THIS AGREEMENT, EVEN IF SONIQCAST OR ITS LICENSORS HAVE BEEN ADVISED OF THE POSSIBILITY OF SUCH DAMAGES. IN NO EVENT WILL SONIQCAST'S LIABILITY OR DAMAGES TO YOU OR ANY OTHER PERSON EVER EXCEED THE AMOUNT PAID BY YOU TO USE THE SOFTWARE, REGARDLESS OF THE FORM OF THE CLAIM. Some countries/states do not allow the limitation or exclusion of liability for incidental or consequential damages, so the above limitation or exclusion may not apply to you.
- 15) PRODUCT RETURNS. IF YOU MUST SHIP THE SOFTWARE TO SONIQCAST OR AN AUTHORIZED SONIQCAST DISTRIBUTOR OR DEALER, YOU MUST PREPAY SHIPPING AND EITHER INSURE THE SOFTWARE OR ASSUME ALL RISK OF LOSS OR DAMAGE IN TRANSIT.
- 16) U.S. Government Restricted Rights. All Software and related documentation are provided with restricted rights. Use, duplication or disclosure by the U.S. Government is subject to restrictions as set forth in subdivision (b)(3)(ii) of the Rights in Technical Data and Computer Software Clause at 252.227-7013. If you are using the Software outside of the United States, you will comply with the applicable local laws of your country, U.S. export control law, and the English version of this Agreement.
- 17) Contractor/Manufacturer. The Contractor/Manufacturer for the Software is: SoniqCast, LLC, 4400 Baker Road, Minnetonka, MN 55343.
- 18) General. This Agreement is binding on you as well as (if you represent an entity) any employees, employers, contractors and agents, and on any successors and assignees. Neither the Software nor any information derived therefrom may be exported except in accordance with the laws of the U.S. or other applicable provisions. This Agreement is governed by the laws of the State of Minnesota (except to the extent federal law governs copyrights and federally registered trademarks). This Agreement is the entire agreement between us and you agree that SoniqCast will not have any liability for untrue statement or representation made by it, its agents or anyone else (whether innocently or negligently) upon which you relied upon entering this Agreement, unless such untrue statement or representation was made fraudulently. This Agreement supersedes any other understandings or agreements, including, but not limited to, advertising, with respect to the Software. If any provision of this Agreement is deemed invalid or unenforceable by any country or government agency having jurisdiction, that particular provision will be deemed modified to the extent necessary to make the provision valid and enforceable, and the remaining provisions will remain in full force and effect. For questions concerning this Agreement, please contact SoniqCast at the address stated above. For questions on product or technical matters, contact the SoniqCast technical support center nearest you.



Appendix B

Aireo™ License Agreement (continued):

- 19) The Software and related products include certain software components and notices from third party licensors. As to these, the following notices and provisions apply, which are in addition to or supersede any inconsistent notices or provisions herein:
- Portions utilize Microsoft Windows Media Technologies. Copyright © 1999-2002 Microsoft Corporation. All Rights Reserved.
 - Portions of this software contain material that is © 1994-1999 DUNDAS SOFTWARE LTD., all rights reserved. Portions of this software contain material that is © 1997-2000 DUNDAS SOFTWARE LTD., all rights reserved. Portions of this software contain material that is © 1997-2001 DUNDAS SOFTWARE LTD., all rights reserved.
 - Portions of this software contain material that is Copyright © 2003 Alan Stern. All rights reserved. Redistribution and use in source and binary forms, with or without modification, are permitted provided that the following conditions are met: (1) redistributions of source code must retain the above copyright notice, this list of conditions, and the following disclaimer, without modification, (2) redistributions in binary form must reproduce the above copyright notice, this list of conditions and the following disclaimer in the documentation and/or other materials provided with the distribution, (3) the names of the above-listed copyright holders may not be used to endorse or promote products derived from this software without specific prior written permission. CERTAIN PARTS OF THIS SOFTWARE IS PROVIDED BY THE COPYRIGHT HOLDERS AND CONTRIBUTORS "AS IS" AND ANY EXPRESS OR IMPLIED WARRANTIES, INCLUDING, BUT NOT LIMITED TO, THE IMPLIED WARRANTIES OF MERCHANTABILITY AND FITNESS FOR A PARTICULAR PURPOSE ARE DISCLAIMED. IN NO EVENT SHALL THE COPYRIGHT OWNER OR CONTRIBUTORS BE LIABLE FOR ANY DIRECT, INDIRECT, INCIDENTAL, SPECIAL, EXEMPLARY, OR CONSEQUENTIAL DAMAGES (INCLUDING, BUT NOT LIMITED TO, PROCUREMENT OF SUBSTITUTE GOODS OR SERVICES; LOSS OF USE, DATA, OR PROFITS; OR BUSINESS INTERRUPTION) HOWEVER CAUSED AND ON ANY THEORY OF LIABILITY, WHETHER IN CONTRACT, STRICT LIABILITY, OR TORT (INCLUDING NEGLIGENCE OR OTHERWISE) ARISING IN ANY WAY OUT OF THE USE OF THIS SOFTWARE, EVEN IF ADVISED OF THE POSSIBILITY OF SUCH DAMAGE.

In addition, such third party licensors may by notices presented by or with their Software impose other terms and conditions on the use of such Software. Your acceptance of this Agreement includes acceptance of any terms imposed by such third party licensors, even where these are not fully set forth in this agreement.

- 20) **Copyright Information for Users of SoniqCast Products.** Certain SoniqCast products allow you to reproduce files, including material for which you own the copyright or are authorized to copy by the copyright owner or by exemption in applicable law. Unless you own the copyright or have such authorization, by copying or assisting copying you may be violating copyright law and may be subject to payment of damages and other remedies. If you are uncertain about your rights, you should contact your legal advisor. It is your responsibility when using a SoniqCast product to ensure there is no infringement of applicable laws on copyright whereby the copying of certain materials may require the prior consent of the copyright owners. SoniqCast disclaims any liability with regard to any illegal use of the SoniqCast product and SoniqCast shall in no event be liable with regard to the origin of any data stored in a compressed audio or video file. You acknowledge and agree that the exportation or use of MP3 Codecs or other similar programs in real-time public broadcasting (terrestrial, satellite, cable or other media) or broadcasting via Internet or other networks, such as but not limited to intranets etc., in pay-audio or pay-on-demand applications, may be subject to legal restrictions.

YOU MUST INDICATE BY RESPONSE BELOW WHETHER YOU AGREE OR DISAGREE WITH THE ABOVE TERMS. IF YOU DO NOT AGREE, PLEASE FOLLOW THE INSTRUCTIONS ABOVE FOR RETURN OF THE SOFTWARE AND OTHER ITEMS ACCOMPANYING IT. IF YOU DO NOT AGREE, YOU WILL NOT BE ABLE TO PROCEED WITH NORMAL INSTALLATION AND USE OF THE SOFTWARE AND/OR PLAYER.

Copyright © 2003 SoniqCast, LLC and its licensors. All Rights Reserved.



Contact Us

Information in this document is subject to change without notice and does not represent a commitment on the part of SoniqCast, LLC. No part of this manual may be reproduced or transmitted in any form or by any means, electronic or mechanical, including photocopying or recording, for any purpose without written permission of SoniqCast, LLC. The software described in this document is furnished under a license agreement and may be used or copied only in accordance with the terms of the license agreement. It is against the law to copy the software on any other medium except as specifically allowed in the license agreement. The licensee may make one copy of the software for backup purposes.

A copy of the Software License Agreement is located in the Aireo™ User's Manual.
© Copyright 2003 SoniqCast, LLC and its licensors. All rights reserved.
Version 1.0
January 2004

Microsoft, MS-DOS, and Windows are registered trademarks of Microsoft Corporation. All rights reserved.
All other products are trademarks or registered trademarks of their respective owners.

Contact Us:

To contact SoniqCast Technical Support, visit: www.soniqcast.com

For information about Aireo™ or Element Electronics™, visit: www.elementelectronics.com

Thank you for choosing

Aireo™

Your Music! Your Way!

