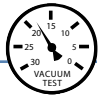




# Critical Wear Areas & Vacuum Test Locations



**NOTE:** OE valves are shown in rest position and should be tested in rest position unless otherwise indicated. Test locations are pointed to with an arrow. Springs are not shown for visual clarity. Low vacuum reading indicates wear and Sonnax parts noted for replacement.

## Upper Valve Body – Bottom Side • U241E Shown Here

Click on Sonnax part numbers to see more information.

### End Plugs, Multiple Locations

- Shift concerns • Clutch failure
- Replace with **Sonnax Part No. 57917E-20K**  
**NOTE:** Six Locations = ★

### C2 (Direct) Exhaust Valve

- C2 Clutch burned
- Slipping/Flares in 3rd and 4th

### Clutch Apply Control Plunger Valve Assembly

- Clutch failure
  - Shift concerns
  - Burnt clutches
- Replace with **Sonnax Part No. 57917E-05K**

### C2 (Direct) Lockup Valve

- C2 Clutch burned
- Slipping/Flares in 3rd and 4th

### Secondary Regulator Valve

- Harsh lockup • Burnt converter
  - TCC apply & release concerns
- Replace with **Sonnax Part No. 57917E-16K**  
Requires F-57917E-TL16 & VB-FIX

### Lockup Control Valve

- TCC apply & release concerns
  - TCC codes • Burnt converter
- Replace with **Sonnax Part No. 27741-25K**  
Requires F-27741-TL25 & VB-FIX  
**NOTE:** Test both ports at the same time.

### Lockup Control Plunger Assembly

- Burnt converter • TCC codes
  - TCC apply & release concerns
- Replace with **Sonnax Part No. 57917E-03K**  
**NOTE:** Vacuum testing of lockup control plunger assembly not possible while in casting. Perform visual inspection to identify wear.

### Lockup Relay Valve

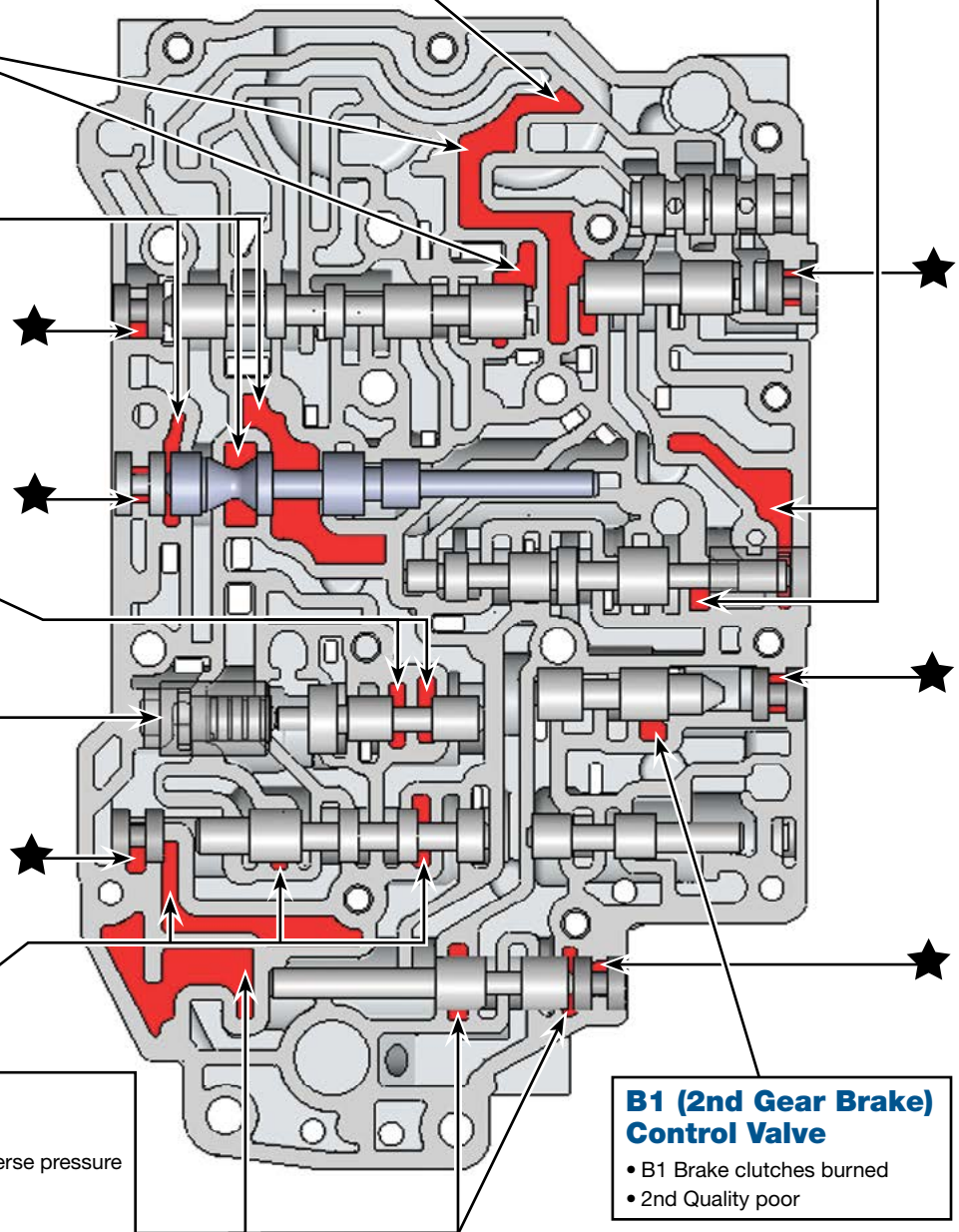
- TCC apply & release concerns
- Overheating • TCC codes • Burnt converter

### Solenoid Modulator Valve

- Harsh/Flare upshifts
  - TCC slip or cycling
  - Low cooler flow
  - Overheating
  - Excessive Reverse pressure
  - Bind-up
- Replace with **Sonnax Part No. 57917E-13K** Requires F-57917E-TL13 & VB-FIX

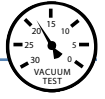
### B1 (2nd Gear Brake) Control Valve

- B1 Brake clutches burned
- 2nd Quality poor





## Critical Wear Areas & Vacuum Test Locations



**NOTE:** OE valves are shown in rest position and should be tested in rest position unless otherwise indicated. Test locations are pointed to with an arrow. Springs are not shown for visual clarity. Low vacuum reading indicates wear and Sonnax parts noted for replacement.

### Upper Valve Body – Top Side • U241E Shown Here

Click on Sonnax part numbers to see more information.

#### C2 (Direct) Accumulator Piston

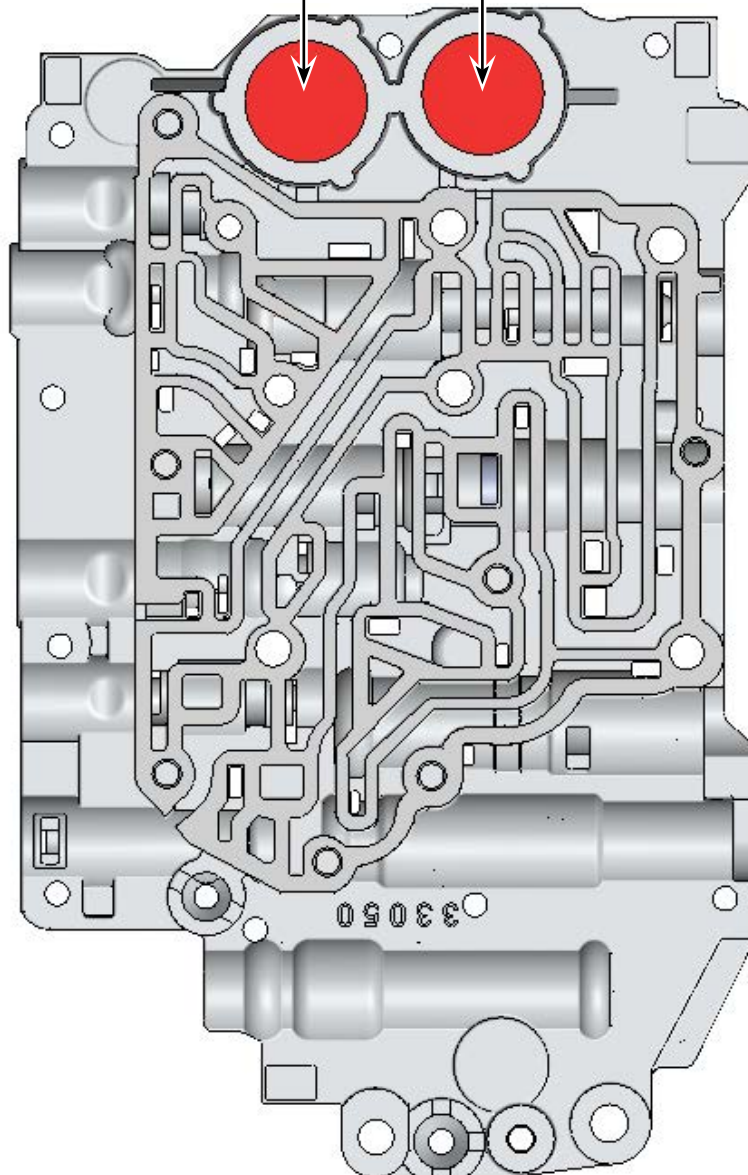
- C2 Clutch Burned
- 2-3 Concerns

Replace with Sonnax Part No.  
**57917E-19K**

#### B1 (2nd Gear) Accumulator Piston

- B1 Brake clutches burned
- 1-2 Quality poor

Replace with Sonnax Part No.  
**57917E-19K**





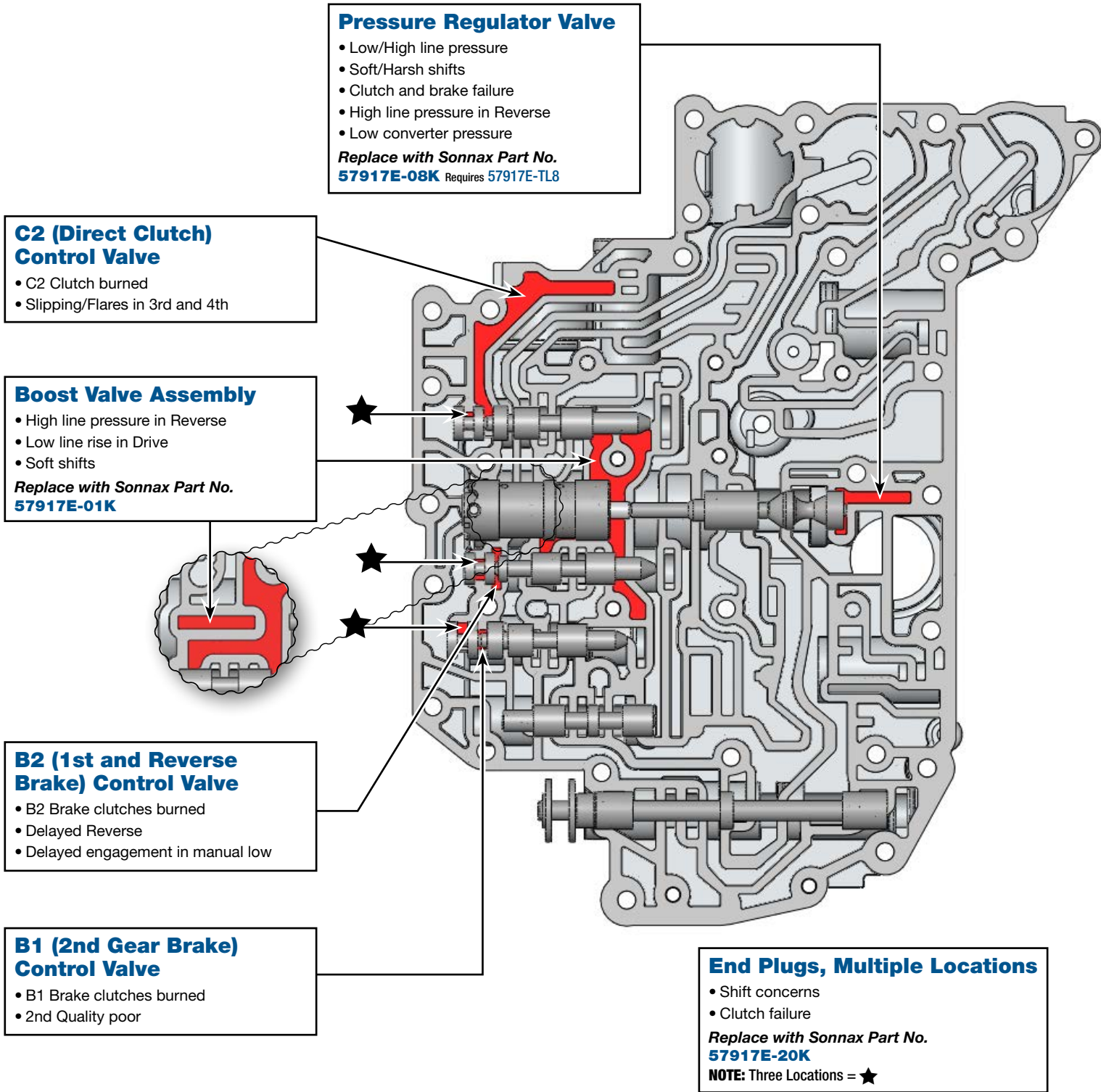
# Critical Wear Areas & Vacuum Test Locations



**NOTE:** OE valves are shown in rest position and should be tested in rest position unless otherwise indicated. Test locations are pointed to with an arrow. Springs are not shown for visual clarity. Low vacuum reading indicates wear and Sonnax parts noted for replacement.

## Lower Valve Body – Bottom Side • U241E Shown Here

**Click on Sonnax part numbers to see more information.**



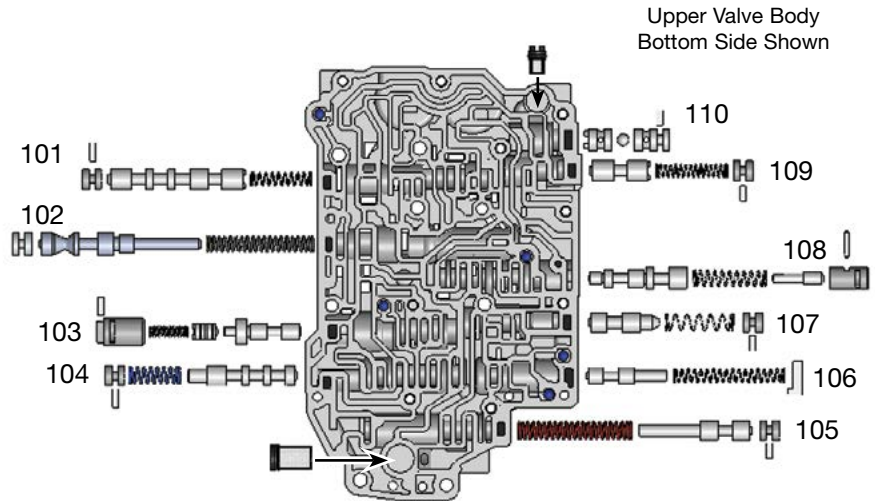


# OE Exploded View

## Upper & Lower Valve Body • U241E Shown Here

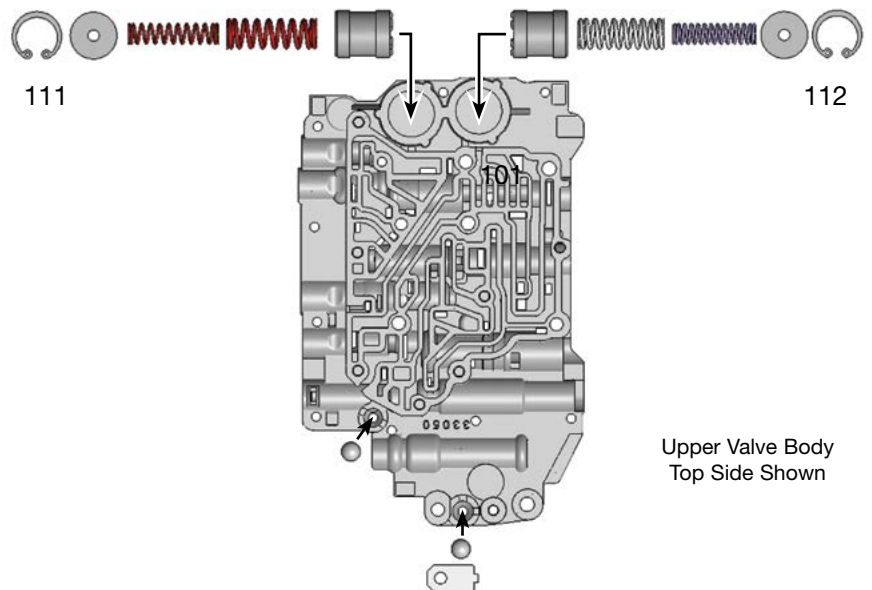
### Upper Valve Body Descriptions

I.D. No.	Description
101	C2 Lockup Valve
102	Secondary Regulator Valve
103	Lockup Control Valve
104	Lockup Relay Valve
105	Solenoid Modulator Valve
106	B3 Orifice Control Valve
107	B1 Lockup Valve
108	Clutch Apply Control Valve
109	C2 Exhaust Valve
110	Three-Way Check Valve



### Upper Valve Body Descriptions

I.D. No.	Description
111	C2 Accumulator Piston
112	B1 Accumulator Piston





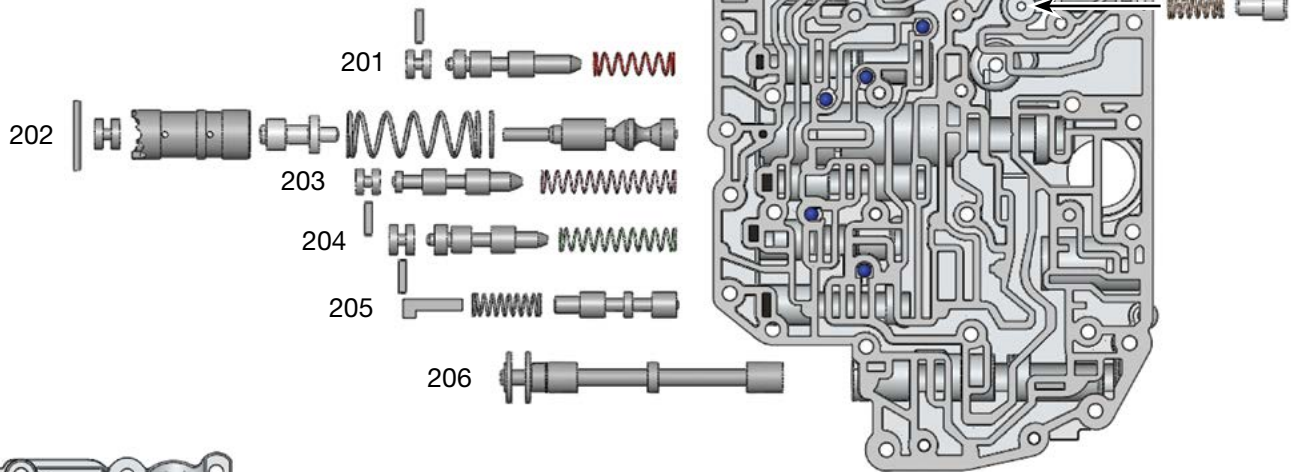
# OE Exploded View

## Upper & Lower Valve Body • U241E Shown Here

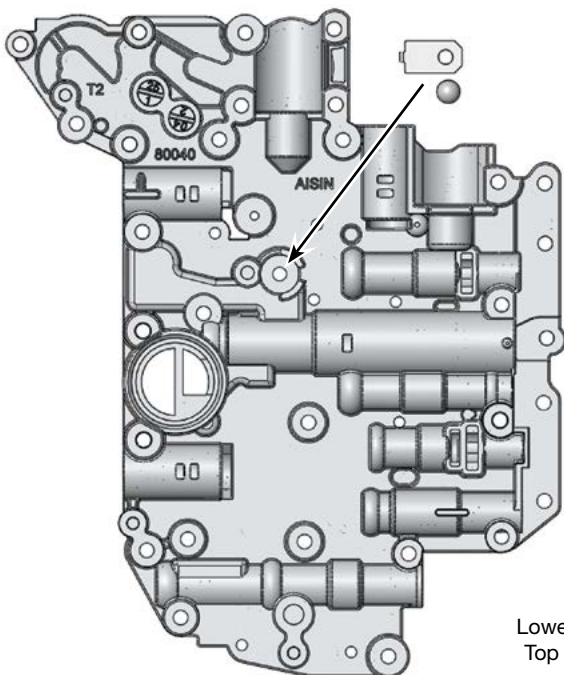
### Lower Valve Body Descriptions

I.D No.	Description
201	C2 Control Valve
202	Main Regulator Valve
203	B2 Control Valve
204	B1 Control Valve
205	3-4 Shift Valve
206	Manual Valve

Checkball is not used in all units.  
Only use in models that have a  
corresponding hole in the  
separator plate at this location.



Lower Valve Body  
Bottom Side Shown



Lower Valve Body  
Top Side Shown