

Critical Wear Areas & Vacuum Test Locations



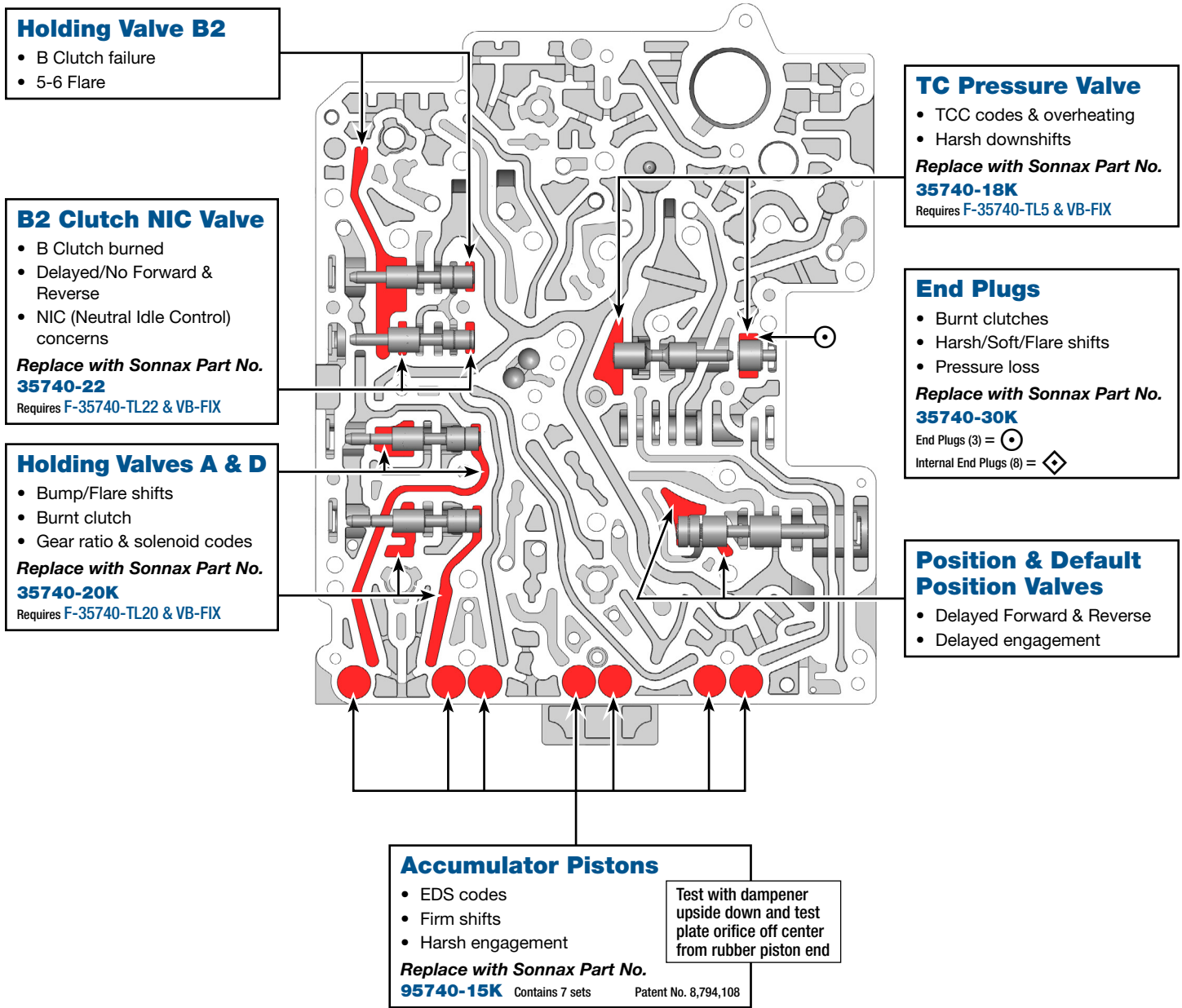
NOTE: OE valves are shown in rest position and should be tested in rest position unless otherwise indicated. Test locations are pointed to with an arrow. Springs are not shown for visual clarity. Low vacuum reading indicates wear.

Upper Valve Body • ZF8HP45 Shown

Click on Sonnax part numbers to see more information.



NOTE: Do not use this information for ZF8HP55 units as valve locations and porting differ.



Critical Wear Areas & Vacuum Test Locations

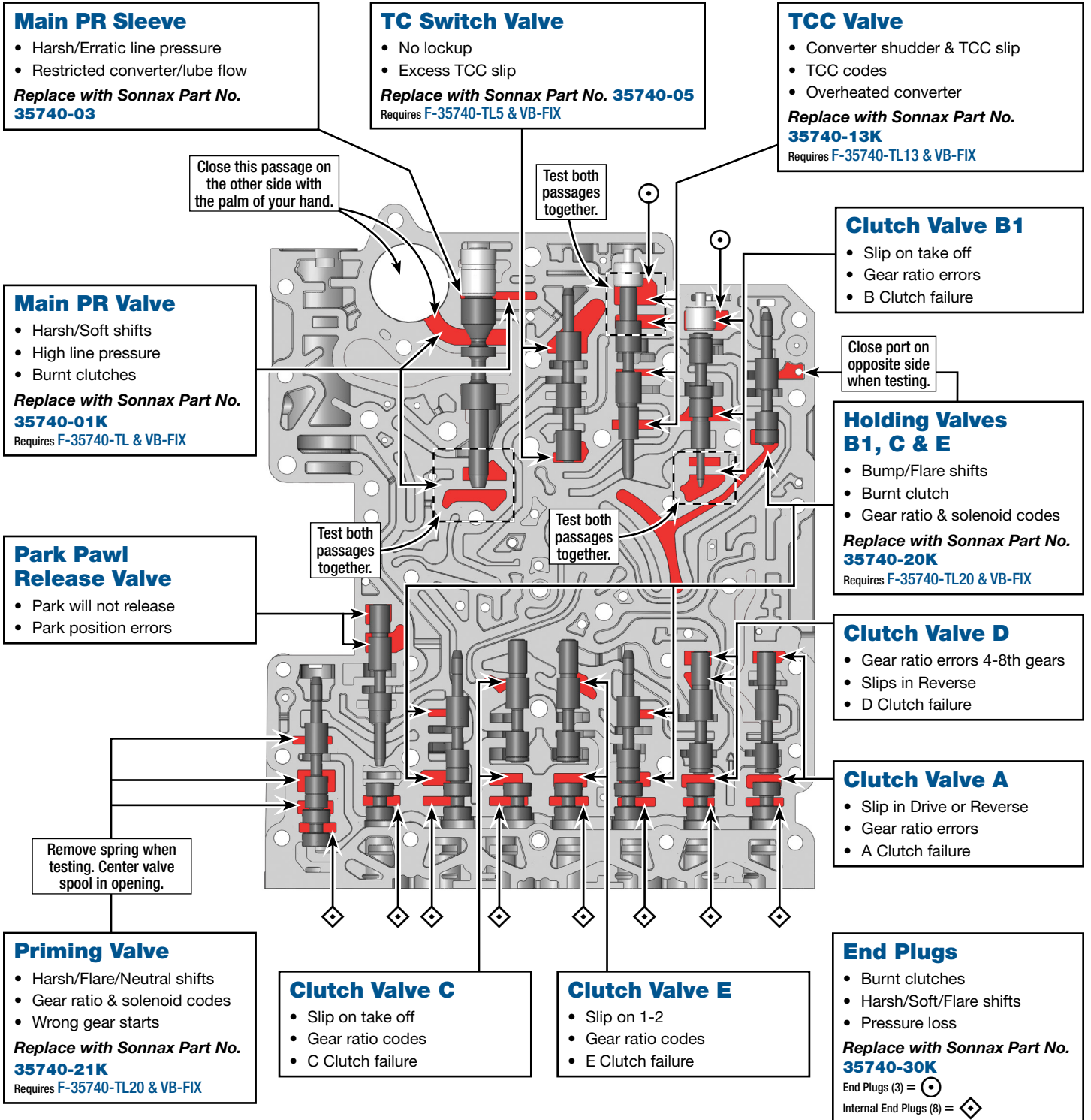


NOTE: OE valves are shown in rest position and should be tested in rest position unless otherwise indicated. Test locations are pointed to with an arrow. Springs are not shown for visual clarity. Low vacuum reading indicates wear.

Lower Valve Body • ZF8HP45 Shown

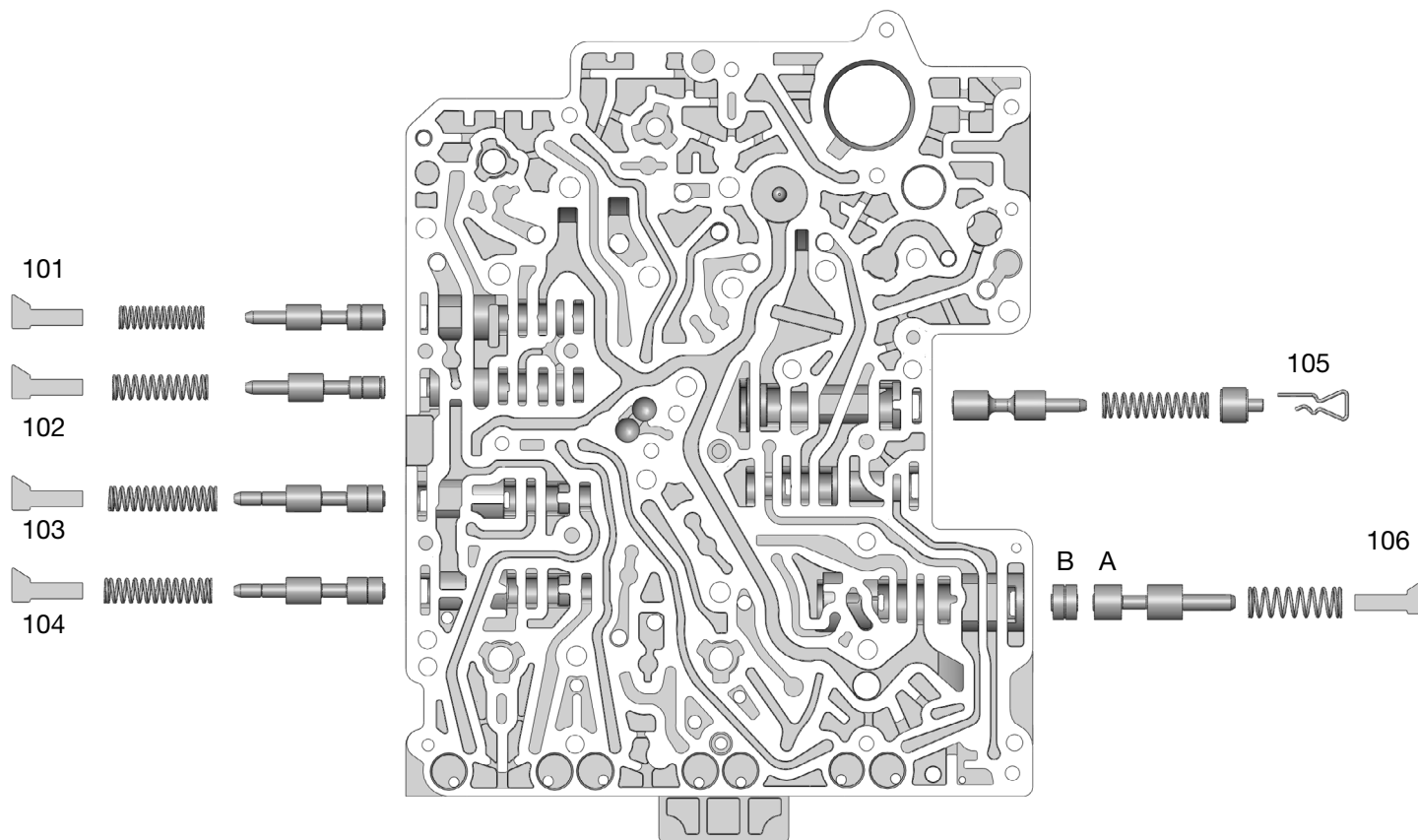
Click on Sonnax part numbers to see more information.

NOTE: Do not use this information for ZF8HP55 units as valve locations and porting differ.



OE Exploded View

Upper Valve Body • ZF8HP45 Shown



Upper Valve Body Descriptions

I.D. No.	Description	ZF Valve Name	Chrysler Valve Name
101	Holding Valve B2	HV-B2	HV-B2
102	Clutch Valve B2 - B Clutch NIC (Neutral Idle Control)	KV-B2	CV-B2
103	Holding Valve A	HV-A	HV-A
104	Holding Valve D	HV-D	HV-D
105	Torque Converter Pressure Valve	WD-V	TC-V
106	A Position Valve (Outboard)	Pos-V	Pos-V
	B Default Position Valve (Inboard)	PosD-V	PosD-V

OE Exploded View

Lower Valve Body • ZF8HP45 Shown

Lower Valve Body Descriptions

I.D. No.	Description	ZF Valve Name	Chrysler Valve Name
201	Main Pressure Regulator Valve & Sleeve	SYS-DR-V	A LP-V (Inboard) B RED-V (Outboard)
202	Torque Converter Switch Valve	SV-WD	SV-TC
203	Torque Converter Clutch Valve	WK-V	TCC-V
204	Clutch Valve B1	KV-B1	CV-B1
205	Holding Valve B1	HV-B1	HV-B1
206	Priming Valve	DR-RED-V	PR-V
207	Park Pawl Release Valve	PS-V	Park-V
208	Holding Valve C	HV-C	HV-C
209	Clutch Valve C	KV-C	CV-C
210	Clutch Valve E	KV-E	CV-E
211	Holding Valve E	HV-E	HV-E
212	Clutch Valve D	KV-D	CV-D
213	Clutch Valve A	KV-A	CV-A

