



Quick Setup Instructions

# Controller



**Sonos™ Controller CR100 Quick Setup Instructions.** For use with the Sonos Digital Music System.

THIS DOCUMENT CONTAINS INFORMATION THAT IS SUBJECT TO CHANGE WITHOUT NOTICE. No part of this publication may be reproduced or transmitted in any form or by any means, electronic or mechanical, including but not limited to photocopying, recording, information retrieval systems, or computer network without the written permission of Sonos, Inc. Sonos, Sonosnet, and all Sonos logos are trademarks of Sonos, Inc.

Sonos' Controller software is based in part on the work of the Independent JPEG Group.

All other products and services mentioned may be trademarks or service marks of their respective owners.

© 2004-2005 by Sonos, Inc. All rights reserved.

Version: 0501

January, 2005

## Important Safety Information

### USA

This equipment has been tested and found to comply with the limits for a Class B digital device, pursuant to part 15 of the FCC Rules. These limits are designed to provide reasonable protection against harmful interference in a residential installation. This equipment generates, uses and can radiate radio frequency energy and, if not installed and used in accordance with the instructions, may cause harmful interference to radio communications. However, there is no guarantee that interference will not occur in a particular installation. If this equipment does cause harmful interference to radio or television reception, which can be determined by turning the equipment off and on, the user is encouraged to try to correct the interference by one or more of the following measures:

- Reorient or relocate the receiving antenna.
- Increase the separation between the equipment and receiver.
- Connect the equipment into an outlet on a circuit different from that to which the receiver is connected.
- Consult the dealer or an experienced audio technician for help. Modifications not expressly approved by the manufacturer may void the user's authority to operate the equipment under FCC rules.

### Canada

This Class B digital apparatus complies with Canadian ICES-003 and RSS-210.

### Industry Canada

The installer of this radio equipment must ensure that the antenna is located or pointed such that it does not emit RF field in excess of Health Canada limits for the general population; consult Safety Code 6, obtainable from Health Canada's Web site [www.hc-sc.gc.ca/rpb](http://www.hc-sc.gc.ca/rpb).

### Europe

This product complies with the requirements of the R&TTE Directive (99-EC-5).

### RF Exposure Requirements

To comply with FCC and EU exposure essential requirements, a minimum separation distance of 20cm (8 inches) is required between the equipment and the body of the user or nearby persons.

⚠ **Attention** In France, operation is limited to indoor use within the band 2.454-2.4835 GHz.

## The Sonos™ Controller CR100

Sonos puts the control of all your music and all your rooms in the palm of your hand. With a Sonos Controller in hand, you'll have instant access to your entire digital music collection, no matter where it's stored. And because it's wireless, you can control the music and where it's being played from anywhere in your home - inside or out, with no pointing or line of sight requirements. That means no more moving from room to room to turn on, change, or turn off the music throughout your home.

The full-color LCD screen and intuitive scroll wheel make everything from browsing songs to choosing zones incredibly easy. It's like having a giant jukebox at your fingertips. Simply choose a zone to play music in, make your music selection(s), and touch **Play**.

### Features

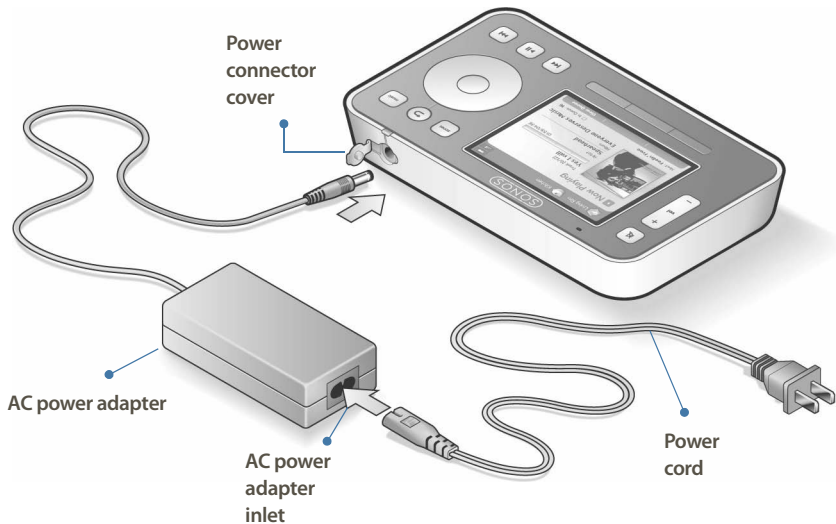
- Wireless control over all your music and all your zones from anywhere
- Instant access to your entire digital music collection from the palm of your hand
- Intuitive control over your music and zones with full-color LCD screen and scroll wheel that makes it simple to:
  - browse songs
  - access playlists
  - view album art
  - queue up tracks
  - choose zones
  - control volume
  - and more

### Controller Package Contents

- Sonos Controller CR100
- AC adapter and power cord
- Quick Setup Instructions
- Sonos License Agreement and Limited Warranty

## Before You Begin

You should charge your new Sonos Controller when you remove it from the packaging. The Controller battery will be fully charged in about two (2) hours. You can use your Controller while it is charging.



1. Pull up from the left side of the power connector cover on your Sonos Controller. (This cover is part of your Controller's splash-resistant design so keep the cover down when the Controller is not charging).
2. Connect the AC power adapter to your Controller using the supplied cable.



**Caution** Use only the supplied power adapter to charge the Controller's battery. Using another adapter will damage your Controller and void your product warranty.

3. Plug the power cord into the AC power adapter inlet as shown.
4. Plug the other end of the power cord into your electrical outlet.

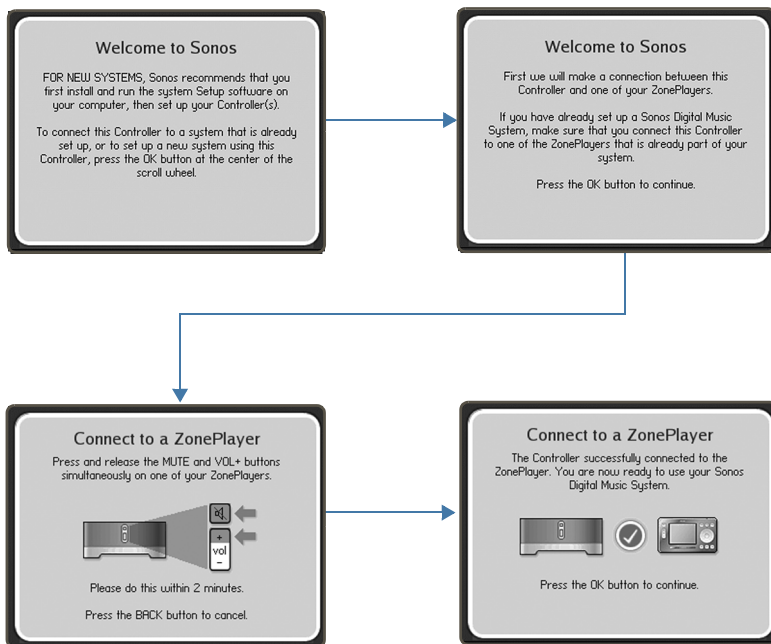
You can continue to set up your music system while the Controller is charging.

## Getting Started

If you are setting up a new Sonos Digital Music System, Sonos recommends you begin by unpacking your ZonePlayer(s), and setting up at least one ZonePlayer before adding the Controller(s) to your music system. Please refer to the ZonePlayer's Quick Setup Instructions for step-by-step assistance. As part of the ZonePlayer setup process, you will be directed to go to your computer and install the System Setup software included with your ZonePlayer.

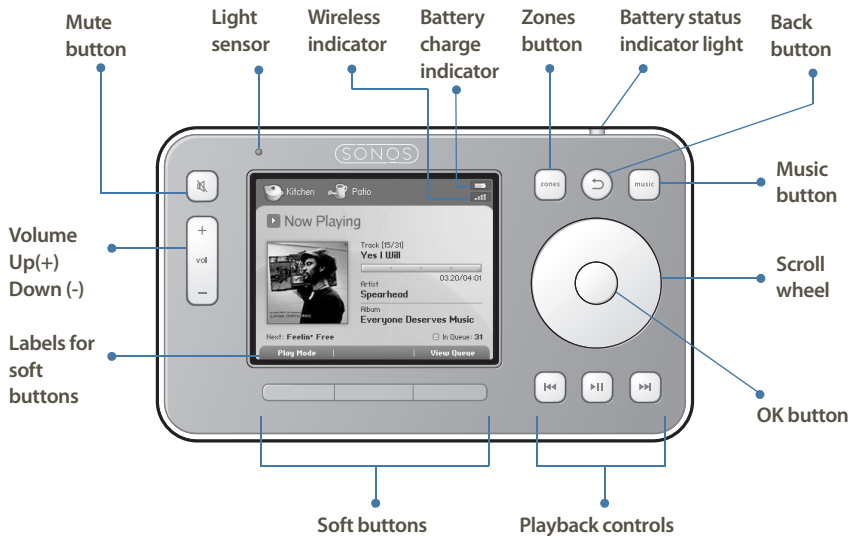
## Connecting Your Controller

After at least one ZonePlayer has been set up, follow the instructions on the Controller screen to associate this Controller to your Sonos Digital Music System.



Your Controller is now connected to your Sonos Digital Music System.

## Using the Controller



### Navigation



**Zones.** Use the **Zones** button to select a zone to play music in, or to view the music selections playing in each room. You can also use this button to create or modify *zone groups* any time you want to share the same music across zones.



**Music.** Use the **Music** button to browse or select music. From the Music menu you can select new music to play, manage your music queues, access playlists, and change the default settings for a Sonos ZonePlayer or Controller. The **Music** button will also toggle you between the Music menu and the Now Playing screen.



**Back.** Use the **Back** button to return to the previous screen in the selected menu (zone or music).



**Scroll wheel.** The scroll wheel is used to navigate through a displayed list whenever one is present on the Controller screen. Use your thumb or finger to "turn" the wheel clockwise to scroll down through the list, and counterclockwise to scroll up through the list.

**OK.** Touch the **OK** button located in the center of the scroll wheel to make selections.

#### View Queue

**Soft buttons.** The soft button functions change to reflect the available actions for the Controller screen currently displayed. The action for each button appears above it (for example **View Queue** or **Add to Queue**).

## Playback



**Play/Pause.** Toggles between playing and pausing the current track. However, when browsing music sources, if you highlight a playable item (track, album, artist, playlist) and press **Play/Pause**, the highlighted music item is added to the end of the music queue and begins to play immediately. This occurs whether the current track is in **Play** or **Pause** mode.



**Next (short press).** Jumps to the start of the next track in the music queue.



**Fast forward (long press).** Pressing and holding this button moves you forward through the current track. The music playback jumps to the new position when the button is released (while the button is held down, the track continues to play at the normal rate).



**Previous (short press).** If you are more than 3 seconds into the track, this button jumps to the start of the current track; if you are less than 3 seconds into the track, this button jumps to the start of the previous track.



**Rewind (long press).** Pressing and holding this button moves you backward through the current track. The music playback jumps to the new position when the button is released (while the button is held down, the track continues to play at the normal rate).

## Volume



**Volume controls.** Use the volume control buttons to increase (+) or decrease (-) the volume in any zone, or across a zone group.





**Mute.** Use the **Mute** button to temporarily silence the music in a zone. (Within a zone group, the mute button automatically mutes the last room where volume controls were adjusted.) Touch the **Mute** button again to unmute. *To mute all zones* in the house, touch and hold the **Mute** button for 3 seconds in any zone that is not currently muted. Touch and hold for 3 seconds to unmute all ZonePlayers.

### Controller Sensors and Indicators



**Light sensor.** The light sensor automatically turns on the button backlights based upon the brightness of the environment.



**Wireless signal strength indicator.** Displays at the top of every screen to indicate the current strength of the Controller's wireless signal.



**Battery status indicator light.** Alerts you to the status of the battery charge:

- Lights *red* when the battery gets low, indicating that the Controller needs to be charged.
- Lights *amber* while the Controller is charging.
- Lights *green* when the Controller finishes charging.
- Unlit when your Controller is in use and the battery is charged.



**Battery charge indicator.** Displays at the top of every screen to indicate the Controller's remaining battery charge.


### Sleep Modes

**Light sleep.** Your Controller will go into *light sleep* to preserve the battery life when it is unused for a specified period of time. The screen will turn off until motion is detected or a button is pressed. Use the **Sleep Timer Docked** (when connected to power supply) and **Undocked** settings to select the amount of time after which your Controller will enter light sleep.



**Deep sleep.** Your Controller will go into *deep sleep* to preserve the battery life when it is unused for a specified period of time. When your Controller wakes from deep sleep - either from the motion sensor or from a button touch - it will go through a restart cycle that takes several seconds. Use the **Deep Sleep Timer** setting to select the amount of time after which your Controller will enter deep sleep.

**Motion sensor.** The Controller has a motion sensor to automatically *wake* your Controller when motion is detected. Use the **Motion Sensor** setting to turn this off.

## Recharging

The Sonos Controller can be recharged by plugging it into the supplied AC adapter. The Battery Charge Indicator  on your Controller displays the current battery charge level. When the battery charge gets very low, the Battery Status Indicator will light red.

## Resetting Your Controller

If your Controller's screen should freeze, press and hold the **Mute**  and **Music**  buttons simultaneously on the Controller for approximately 3 seconds. The Controller will reset itself momentarily.

If you want to join your Controller to a different Sonos Digital Music System, you must *factory reset* your Controller. Select **System Settings**→**Controller Settings**→**Advanced Settings**→**Factory Reset** from the **Music** menu.

## For Additional Information

- Refer to the **Sonos Digital Music System User Guide** included with your Zone-Player for additional information regarding the Sonos Controller's setup, features, and functions.
- For the latest Sonos Digital Music System product information, go to <http://www.sonos.com>.
- For product service and support, go to <http://support.sonos.com>.



**Caution** Household cleaners or solvents can damage the finish on your ZonePlayers or Controllers. Clean only with a dry soft cloth.

## Sonos Controller Quick Setup Instructions



Sonos, Inc.  
506 Chapala St.  
Santa Barbara, CA 93101  
[www.sonos.com](http://www.sonos.com)  
1.800.680.2345