

iCube™

User Guide

www.phonak.com

029-0683-02/V1.00/2008-01/A+W
Printed in Switzerland © Phonak AG All rights reserved



Contents

Welcome	5	Programming hearing instruments without clients	25
Description	6	Reset button	26
iCube accessories	7	Indicators	28
Getting started	8	Battery indicator	28
Installing and using the iCube charger	8	Fitting status indicator	30
Charging the battery	9	Software indicators	32
Operating time	10	Important information	34
Battery status	11	Maintenance and care	34
Turning iCube ON/OFF	12	Safety notice and other important information	35
Turning iCube ON	12	Troubleshooting	38
Turning iCube OFF	12	Declaration of conformity	40
Connecting iCube to your computer	13	Service and warranty	41
Connecting via Bluetooth	13	Phonak distributors worldwide	42
Deleting Bluetooth pairing	19		
Connecting via USB cable	20		
iPFG System Configuration options	21		
Using iCube	22		
Wearing iCube	22		
Detecting and programming hearing instruments	23		


Welcome

Congratulations on choosing iCube from Phonak, the first manufacturer to offer you CableFree Fitting.

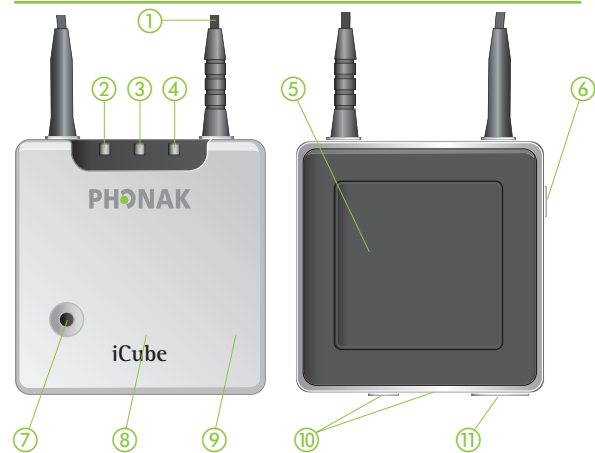
iCube enables the wireless transfer of fitting data from your PC directly to your client's hearing instruments. Based on Bluetooth technology the fitting process is fast, smooth and stable, and most importantly, cable-free.

Please read this manual carefully to benefit from all the features of your iCube. For further information, please visit the Phonak website www.phonak.com.

Phonak – life is on

 For your safety, carefully read the chapter "Important information" on pages 34–39.

Description



- ① Neckloop
- ② Right side fitting indicator
- ③ Battery indicator
- ④ Bluetooth / left side fitting indicator
- ⑤ Not supported
- ⑥ ON/OFF button
- ⑦ Bluetooth pairing button
- ⑧ Reset button (covered)
- ⑨ Detachable cover
- ⑩ Audio & FM connection (not supported, do not use!)
- ⑪ Mini USB charging and programming connection

6

iCube accessories

- USB cable, 3 m (10 ft.)
- iCube charger
- USB Bluetooth adaptor
- USB hub

Contents may vary depending on country.

7

Getting started

Installing and using the iCube charger

Install the iCube charger by plugging the power supply into a power outlet and docking iCube into the iCube charger as shown below.



It is recommended that you use the iCube charger to store and charge iCube whenever it is not in use. This way it will be sufficiently charged and ready for the next fitting session.

8

Charging the battery

Your iCube has an internal, rechargeable battery. As soon as you place your iCube on the iCube charger, the battery starts charging.

- ⓘ For safety reasons, recharge the battery only with chargers supplied by Phonak.

During the charging process, the battery indicator is lit solid. Once the battery is fully charged, the battery indicator will start flashing slowly. Normally, charging an empty battery takes about 90 minutes. It is safe to leave the charger connected overnight – the battery cannot be overcharged.

- ⓘ When charging your iCube for the first time, leave it to charge for at least three hours (even if the battery indicator starts flashing earlier).
- ⓘ A new battery's full performance is achieved only after two or three complete charge and discharge cycles.

9

Getting started

Your iCube battery can be charged hundreds of times. If the operating time of your iCube reduces substantially, please contact your local Phonak representative.

Operating time

Battery consumption and the operating time of the iCube greatly depend on the usage of the device. Heavy use will reduce the operating time of your iCube between battery recharges.

Fully charged, your iCube will operate for up to four hours in normal use.

Battery status

While turned ON, your iCube indicates the battery status on the battery indicator LED as follows:

- Yellow, slow flash ▷ Battery level is high.
- Yellow, fast flash ▷ Battery level is low.

Once the fast flashing starts, your iCube will still operate for about an hour, but you should recharge the battery as soon as possible.

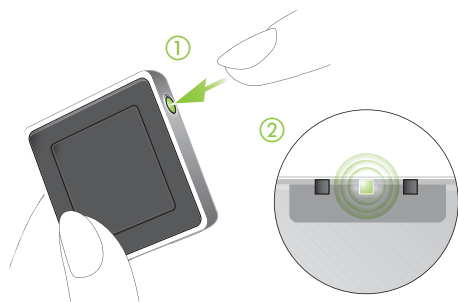
Low battery status is also indicated in iPPG in the "CableFree Fitting Status" dialog.

Getting started

Turning iCube ON/OFF

Turning iCube ON

To turn ON your iCube, press and hold the ON/OFF button for about a second until you see the battery indicator turn ON. Once your iCube is fully operational, the battery indicator will flash slowly.



Turning iCube OFF

To turn OFF your iCube, press and hold the ON/OFF button for about two seconds until you see the battery indicator turn ON. Release the ON/OFF button. Once you release the ON/OFF button, the battery indicator will go dark and your iCube is OFF.

Connecting iCube to your computer

iCube was designed to bring you the benefits of CableFree Fitting via Bluetooth connection. However, there are locations where Bluetooth connections are not allowed, so iCube can alternatively be used with a USB connection. In either case, before you can start using your iCube it needs to be connected with your computer.

i Before you continue, make sure the iCube battery charge is high.

Connecting via Bluetooth

Connecting your iCube via Bluetooth is done in three steps:

1. Prepare the Bluetooth connection on your computer

To use iCube wireless via Bluetooth make sure that you have Bluetooth activated. If your computer is equipped with Bluetooth built in, find the Bluetooth settings and activate it. For specific instructions please refer to the documentation of the computer and operating system you are using.

Getting started

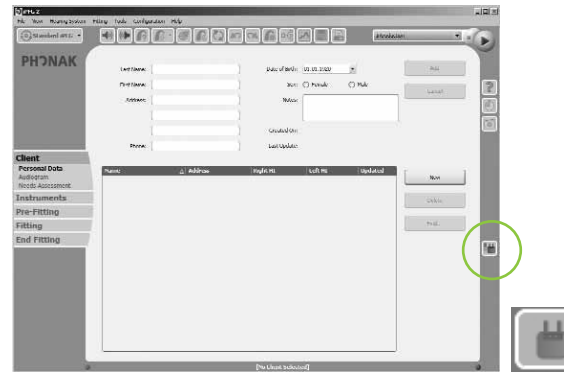
If you are using NoahLink and you have already installed the corresponding external Bluetooth adaptor, you can use that same adaptor for iCube.

If your computer is neither equipped with Bluetooth built in nor with a NoahLink compatible Bluetooth adaptor, use the Bluetooth adaptor accessory provided by Phonak. Refer to the "quick start guide" document available with the adaptor's Software CD and follow the instructions.

i iCube works within a Bluetooth operating range of up to 10 meters (33 ft.) of the fitting computer.

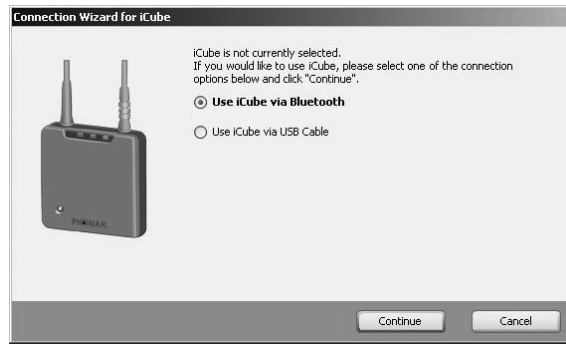
2. Start the Connection Wizard for iCube

With Bluetooth functionality turned ON, you can now initiate the connecting process via the iPFG fitting application. In iPFG, press the iCube status button which is located at the right-hand side of the iPFG screen.



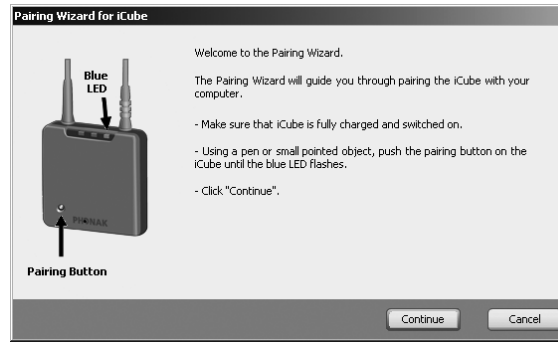
If no iCube has been previously connected, pressing the iCube status button will start the "Connection Wizard for iCube". (Later, pressing the iCube status button will guide you directly to the "CableFree Fitting Status" screen as described on page 18).

Getting started



3. Pairing iCube with your computer

Select "Use iCube via Bluetooth" and the pairing wizard will guide you through the process of pairing iCube with your computer. Pairing is necessary to control which Bluetooth devices are permitted to communicate with each other. It needs to be completed only once, before first use.



To initiate the pairing process on iCube, set the device into pairing mode by pressing and holding the Bluetooth pairing button for 2 seconds until the Bluetooth indicator is blue and flashing fast. iCube is now in pairing mode for two minutes or until pairing is completed.

Getting started

Follow the instructions to complete pairing and finish the connection process for iCube. Upon successful completion, the "CableFree Fitting Status" will inform you about the status of iCube:



Deleting Bluetooth pairing

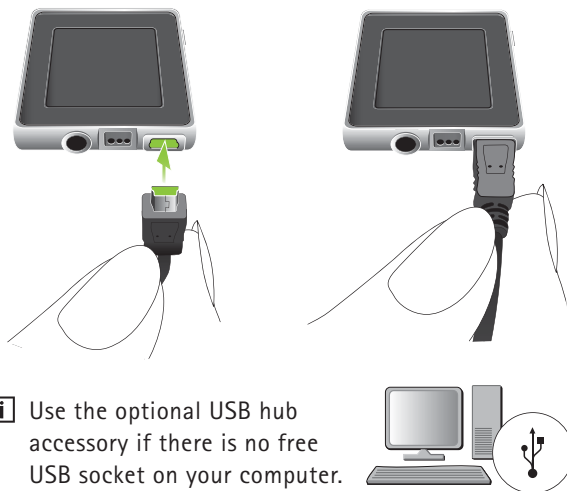
Please note that only one iCube can be paired with your computer. If you wish to connect a different iCube to your computer, select "Configuration", "System Settings", "Communication" from the menu bar of the fitting application. This will provide you with the option of removing the existing device. If you wish to delete the Bluetooth pairing from your iCube, press and hold the Bluetooth pairing button for about 10 seconds until the Bluetooth indicator is lit solid blue.

Getting started

Connecting via USB cable

If you wish to connect your iCube via USB cable instead of Bluetooth, start the "Connection Wizard for iCube" in the iPFG fitting application as described on page 14 and choose to use iCube via USB cable.

When prompted by the wizard, connect the Mini USB plug of the enclosed USB cable as indicated below. Attach the other end of the cable to a USB socket of your computer.



- i** Use the optional USB hub accessory if there is no free USB socket on your computer.



- i** When connecting iCube for the first time via USB, your computer will start searching for the associated driver software. Depending on the operating system, you may be presented with an installation wizard: "Found New Hardware Wizard". If so, let your computer automatically install the necessary driver software. The driver software has already been installed during the iPFG installation and should be identified by the wizard. It is not necessary to insert the iPFG installation CD.

After successful installation of the USB driver, continue with the "Connection Wizard for iCube" and follow the instructions. No pairing is required for the USB cable connection. Upon successful completion of the connecting process, the "CableFree Fitting Status" will inform you about the status of iCube.

iPFG System Configuration options

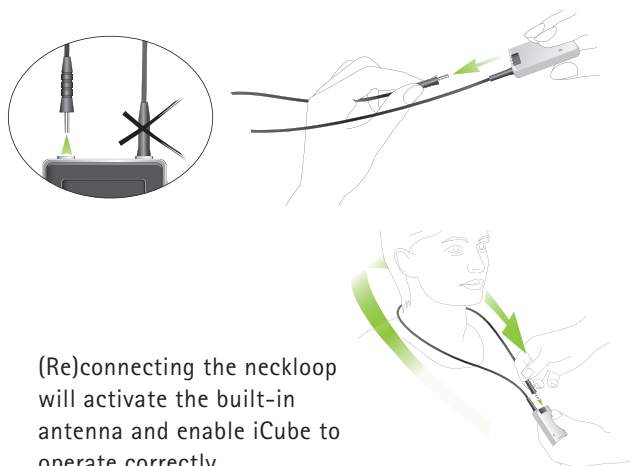
The "Pairing Wizard for iCube" can also be accessed via the "Configuration", "System Settings", "Communication" menu bar of the fitting application. In the same menu you can also select or deselect iCube. Additionally, you can initiate here the Bluetooth pairing process as described earlier.

Using iCube

Before using iCube to fit a client with hearing instruments, make sure the battery is sufficiently charged. Remove iCube from the iCube charger and turn it ON.

Wearing iCube

Open the neckloop by unplugging the jack, and place iCube around your client's neck as shown below.

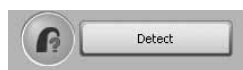


(Re)connecting the neckloop will activate the built-in antenna and enable iCube to operate correctly.

Detecting and programming hearing instruments

In wireless fitting, where there are no left and right fitting cables, the assignment of left/right is done via the fitting application.

Click the "Detect" button which is located on the toolbar and in the "Instrument Selection" screen to identify the hearing instruments.



Follow the iPFG instructions to assign (or reassign) each hearing instrument to the desired side (left or right).



Using iCube

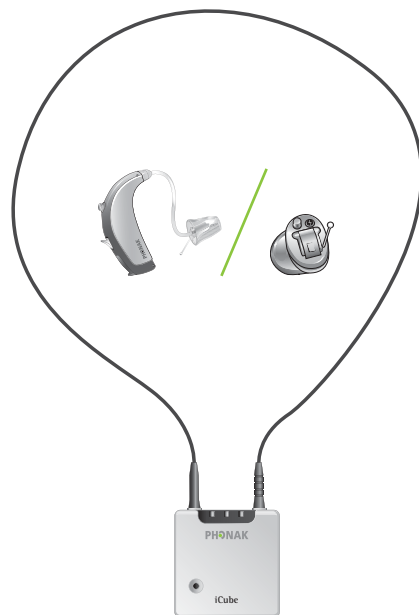
Continue by selecting to use either the settings from the hearing instruments ("HI") or from iPFG.

Now the hearing instruments and iCube are ready for fitting.

At the end of the fitting, during the programming of hearing instruments, the right side and the left side fitting indicator flash fast red, and blue, respectively.

Programming hearing instruments without clients

When programming hearing instruments without having your clients wear them, make sure they are in range of iCube. Place both hearing instruments and iCube as shown in the following picture.



Reset button

If, for some reason, iCube becomes unresponsive, remove the cover by sliding it upwards. Then press the reset button as shown in the picture. The Bluetooth pairing will not be lost.

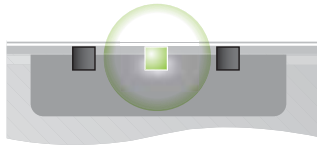


i If all three indicators on your iCube are lit solid, this may indicate a software problem. Refer to Troubleshooting section.

Indicators

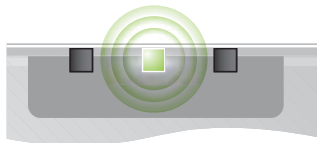
Battery indicator

Yellow
Slow flash



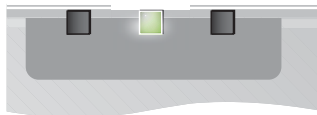
Battery full

Yellow
Fast flash



Battery empty

Yellow
Lit solid



Battery charging

Indicators

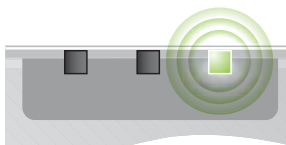
Fitting status

Red
Right fitting
status indicator
flashing fast.



iCube is programming
the right hearing
instrument.

Blue
Left fitting
status indicator
flashing fast.



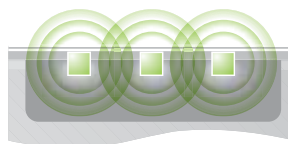
iCube is programming
the left hearing
instrument.

Indicators

Software indicators

iCube is built such that it can be upgraded whenever new functionalities are available. Follow the instructions provided together with the new software version.

Red / yellow / blue
All three indicators
flash fast.



iCube is being upgraded.

Red / yellow / blue
All three indicators
lit solid.



This may indicate a software problem.
Refer to Troubleshooting section.

Important information









Maintenance and care

- Clean iCube using a damp cloth. Never use household cleaning products (washing powder, soap, etc.) or alcohol to clean the device.
- Protect iCube from excessive moisture and heat. Protect it from excessive shock and vibration.
- When iCube is not in use, turn it OFF and store it in the iCube charger so it will be sufficiently charged and ready for the next fitting session.

Safety notice and other important information

- Keep this device out of reach of children under 3 years.
- Persons using medical devices such as pacemakers are not permitted to use this device.
- X-ray radiation (e.g. CT scans, MRI scans) may adversely affect the correct functioning of this device. We recommend that you keep iCube outside the X-ray radiation procedure rooms.
- High-powered electronic equipment, larger electronic installations and metallic structures may impair and significantly reduce the operating range.
- External devices may only be connected if they have been tested in accordance with corresponding IECXXXX standards.

Important information

-  The digitally-coded, inductive transmission technology used in this device is extremely reliable and experiences virtually no interference from other devices. It should be noted, however, that when operating the device near a computer terminal or other strong electromagnetic fields, it may be necessary to be at least 60 centimeters (24") away to ensure proper operation.
-  If the hearing instrument do not respond to the device because of an unusual field disturbance, move away from the disturbing field.
-  Use only original Phonak accessories.
-  Opening iCube might damage it. If problems occur which cannot be resolved by following the remedy guidelines in the troubleshooting section of this user guide, contact your local Phonak representative. iCube may only be repaired by an authorized service center.
-  Do not make any changes or modifications to this device.
-  Do not unplug the neckloop when iCube is saving data to the hearing instruments. Keep the neckloop closed when iCube is not in use or stored on the iCube charger.
-  If you use several iCubes in the same building, be aware that their inductive field can disturb one another if within a range of 2 meters (6 feet). This may even occur when used in different rooms.
-  Do not use iCube while charging.

Important information

Troubleshooting

Situation	Most probable cause	Remedy
iCube is no longer recognized by the computer to which it was previously paired.	The Bluetooth functionality of your computer may be disabled.	Find the Bluetooth settings on your computer and turn Bluetooth functionality ON.
	iCube is out of range.	Move iCube closer to your computer.
iCube turns OFF.	The battery is empty.	Charge iCube.
iCube is unresponsive and all three indicators are lit solid.	This may indicate a software problem.	Unplug the USB cable and press the reset button.
		If the problem persists, delete Bluetooth pairings and press the reset button again. If the problem still persists, contact your local Phonak representative.
A second or different iCube cannot be connected to my computer.	Only one iCube can be paired with your computer.	Start the "Pairing Wizard for iCube" which will provide you with the option of removing the existing device. To delete the Bluetooth pairing from your iCube, press and hold the Bluetooth pairing button for about 10 seconds until the Bluetooth indicator is lit solid blue.

Declaration of conformity

Phonak AG, Laubisrütistrasse 28, CH-8712 Stäfa, Switzerland declares under its sole responsibility that the iCube is in conformity with the following standards or other standardizing documents:

Radio: EN 300-330
EN 300 328
EMC: EN 60601-1-2
Safety: EN/IEC 60601-1

Implementing the provisions of the MDD 93/42/EEC (Medical Device Directive), R&TTE Directive 1999/5/EC (Radio and Telecommunications Terminal Equipment), EMC Directive 2004/108/EC (Electromagnetic Compatibility) and LVD 2006/95/EC (Low Voltage Directive).

Service and Warranty

Phonak offers you a comprehensive global warranty which becomes effective on the date of purchase. This warranty covers any repairs due to defects in material and/or workmanship. The warranty does not cover damage from improper handling or care, exposure to chemicals, immersion in water or undue stress. Damage caused by third parties or non-authorized service centers renders the Phonak warranty null and void. This warranty applies to the Phonak products listed below:

Serial number:

Date of purchase:

Phonak distributors worldwide

Group companies:	(detailed information on www.phonak.com)	Spain	Phonak Ibérica S.A., 03008 Alicante
Australia	Phonak Australasia Pty. Ltd. Baulkham Hills N. S. W. 2153	Sweden	Phonak AB, 117 43 Stockholm
Austria	Hansaton Akustische Geräte GmbH 5020 Salzburg	Switzerland	Phonak AG, Phonak Schweiz, 8712 Stäfa
Belgium	Ets Lapperre B.H.A.C. NV B-1702 Groot-Bijgaarden	United Kingdom	Phonak UK Limited Warrington, Cheshire WA1 1PP
Brazil	Phonak Belgium NV, B-1700 Dilbeek	USA	Phonak LLC, Warrenville, IL 60555-3927
Canada	CAS Produtos Médicos São Paulo – SP 04363-100	Independent general distributors:	A complete list of Phonak distributors is available at Phonak's Internet site: www.phonak.com . Please visit us or ask your hearing care professional for information.
China	Phonak Canada Limited Mississauga, Ontario L5W 0B3	Manufacturer:	Phonak AG, Laubisrütistrasse 28 CH-8712 Stäfa, Switzerland
Denmark	Phonak (Shanghai) Co. Ltd., Shanghai City 200233		
France	Phonak Danmark A/S, Nitvej 10 2000 Frederiksberg		
Germany	Phonak France SA, 69500 Bron		
Italy	Phonak GmbH, 70736 Fellbach-Oeffingen EC Representative		
Japan	Phonak Italia S.r.l., 20159 Milano		
Jordan	Phonak Japan Co., Ltd., Tokyo 101-0044		
Mexico	Phonak Middle East, 11181 Amman		
Netherlands	Phonak Mexicana, S.A. de C.V. 03920 México, D.F.MEXICO		
New Zealand	Phonak B.V., 3439 ME Nieuwegein		
Norway	Phonak New Zealand Ltd., Takapuna Auckland 9		
Poland	Phonak AS, 0105 Oslo		
Russian Federation	Phonak Polska Sp. z o.o., 00-567 Warszawa		
	Phonak CIS Ltd., Moscow, 115114		



The CE symbol is confirmation by Phonak AG that this Phonak product meets the requirements of directive 93/42/EEC on medical devices and the R&TTE Directive 1999/5/EC on Radio and Telecommunication Terminal Equipment. The numbers after the CE symbol are the numbers of consulted certified bodies under the above mentioned directives. The alert sign means that potential restrictions on its use are applicable in one or more EU Member States.



This symbol indicates this product complies with requirements for a B type applied part according to EN 60601-1.



This symbol indicates that it is important that the user refers to associated warnings given in this user guide.



The symbol with the crossed out disposal bin indicates that this product shall not be treated as household waste. Please hand over your old or unused product to the applicable collection point for the recycling of electrical and electronic equipment or bring your old product to your hearing care professional for appropriate disposal. By ensuring this product is disposed of correctly, you will help prevent potential negative effects on the environment and human health.

Operating conditions This product has been designed for trouble-free operation without restrictions when used as intended, unless otherwise stated in this user guide.

Transportation and storage conditions Temperature should not exceed limits of $-20^{\circ}/60^{\circ}$ Celsius at a relative air humidity of 65% for extended periods during transportation and storage. Air pressure between 500 and 1100 hPa is not detrimental to this device.

 **Z999** Australia & New Zealand

 **ANATEL** Brazil

CMII ID: China

 **PSE** Japan

 **MIC** South Korea



Notices

Notice 1

This instrument is certified under:



FCC ID: KWC-ICUBE1
IC: 2262A-ICUBE1

This device complies with Part 15 of the FCC Rules and with RSS-210 of Industry Canada. Operation is subject to the following two conditions:

- 1) this device may not cause harmful interference, and
- 2) this device must accept any interference received, including interference that may cause undesired operation.

Changes or modifications made to this equipment not expressly approved by Phonak may void the FCC authorization to operate this equipment.

Notice 2

This Class B digital apparatus complies with Canadian ICES-003.

Notice 3

This equipment has been tested and found to comply with the limits for a Class B digital device, pursuant to Part 15 of the FCC Rules.

These limits are designed to provide reasonable protection against harmful interference in a residential installation. This equipment generates, uses, and can radiate radio frequency energy and, if not installed and used in accordance with the instructions, may cause harmful interference to radio communications. However, there is no guarantee that interference will not occur in a particular installation.

If this equipment does cause harmful interference to radio or television reception, which can be determined by turning the equipment off and on, the user is encouraged to try to correct the interference by one or more of the following measures:

- Reorient or relocate the receiving antenna
- Increase the separation between the equipment and receiver
- Connect the equipment into an outlet on a circuit different from that to which the receiver is connected
- Consult the dealer or an experienced radio/TV technician for help