

External photo

Sony Corporation

Personal Audio System

[Model: SRS-XB2]

## Installation manual



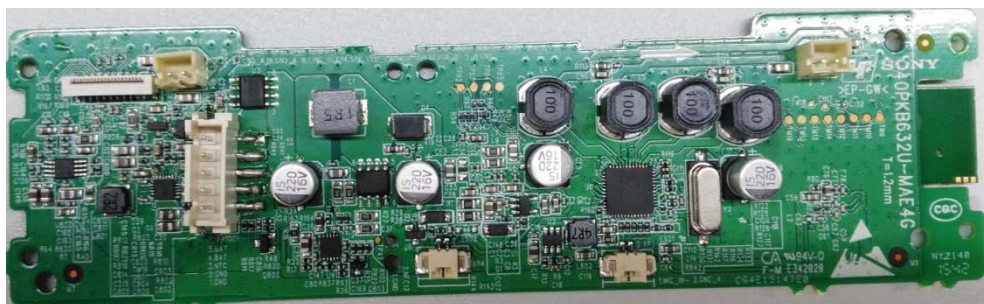
### 1. PCB

EUT (BT Module): TOP side

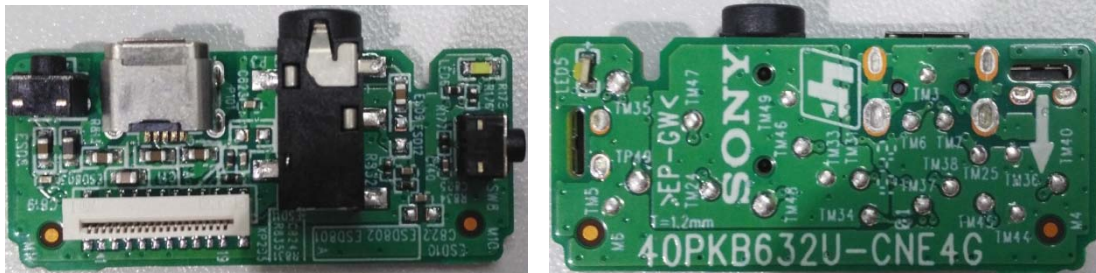


Bluetooth module (RF block) soldered on the mainboard.

EUT (BT Module): Bottom side



Jack PCB:

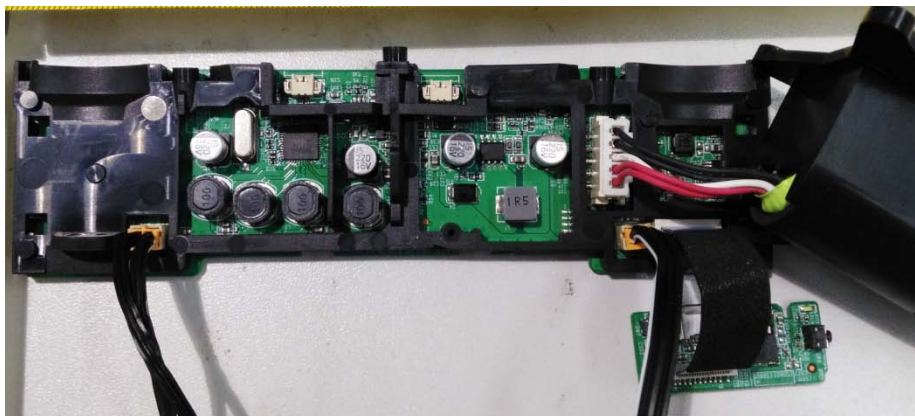


NFC board:



ICL Confidential For Sony only No Disclosure

## 2. Installation steps





As you see, the main board is fixed with the bracket

Then the EUT (BT Module) connected with other things



After that the EUT (BT Module) with bracket was mounted in the machine chamber , as below:



Main board with bracket

ICL Confidential For SONY Only No Disclosure



At last, the machine is sealed:



**So, it will be not to open RF block easily!**

*ICL Confidential For SONY Only No Disclosure*