

SONY WALKMAN

DCC-NWFM1

Car FM Stereo Transmitter

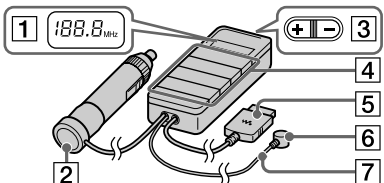
Operating Instructions

Mode d'emploi

Manual de instrucciones <http://www.sony.net/>

©2008 Sony Corporation

Printed in China



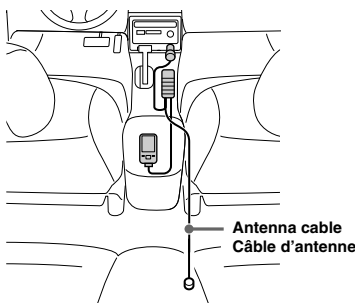
A



Insert this unit into the cigarette lighter socket securely until the frequency appears in the frequency display window.
Insérez correctement l'appareil dans l'allume-cigare jusqu'à ce que la fréquence s'affiche sur la fenêtre d'affichage de la fréquence.

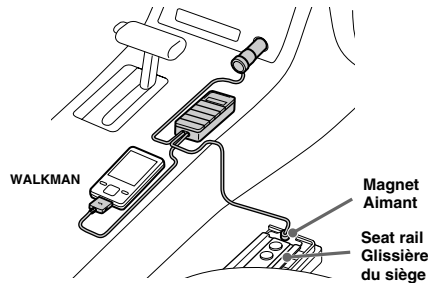
B

<Example of installation in a car with its FM radio antenna built-in the rear window, or its rod antenna mounted on the rear of the car body>
<Exemple d'installation dans une voiture dont l'antenne radio FM est incorporée dans la vitre arrière, ou dont l'antenne-tige est montée sur l'arrière de la carrosserie>



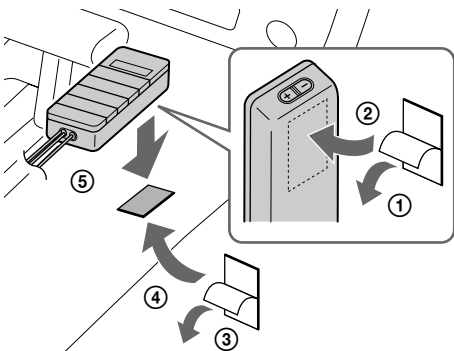
C

<Example of attaching the antenna cable magnet to a passenger's seat rail>
<Exemple de fixation de l'aimant du câble d'antenne sur la glissière du siège passager>

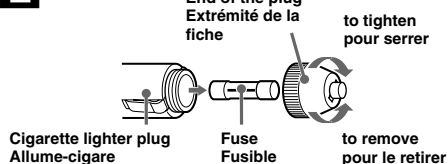


Use the above basic examples B & C as general guidelines. Adjust the antenna for the best reception, depending on your car.
Utilisez les exemples de base B & C ci-dessus comme guides généraux. Réglez l'antenne pour obtenir la meilleure réception, selon votre voiture.

D



E



For customers who purchased this product in the USA
Please register this product on line at
<http://www.sony.com/productregistration>.
Proper registration will enable us to send you periodic mailings about new products, services, and other important announcements.
Registering your product will also allow us to contact you in the unlikely event that the product needs adjustment or modification.
Thank you.

English

WARNING

To reduce the risk of fire or electric shock, do not expose this apparatus to rain or moisture.
To reduce the risk of electrical shock, do not open the cabinet.
Refer servicing to qualified personnel only.
You are cautioned that any changes or modifications not expressly approved in this manual could void your authority to operate this equipment.

The following FCC/IC statement applies only to the version of this model manufactured for sale in the USA and Canada. Other versions may not comply with FCC/IC technical regulations.

Note

This device complies with Part 15 of the FCC Rules and RSS-Gen of the IC rules.
Operation is subject to the following two conditions: (1) this device may not cause harmful interference, and (2) this device must accept any interference received, including interference that may cause undesired operation of the device.

The following FCC statement applies only to the version of this model manufactured for sale in the USA. Other versions may not comply with FCC technical regulations.

Note

This equipment has been tested and found to comply with the limits for a Class B digital device, pursuant to Part 15 of the FCC Rules. These limits are designed to provide reasonable protection against harmful interference in a residential installation. This equipment generates, uses and can radiate radio frequency energy and, if not installed and used in accordance with the instructions, may cause harmful interference to radio communications. However, there is no guarantee that interference will not occur in a particular installation. If this equipment does cause harmful interference to radio or television reception, which can be determined by turning the equipment off and on, the user is encouraged to try to correct the interference by one or more of the following measures:

- Reorient or relocate the receiving antenna.
- Increase the separation between the equipment and receiver.
- Connect the equipment into an outlet on a circuit different from that to which the receiver is connected.
- Consult the dealer or an experienced radio/TV technician for help.

Features

With this unit, you can enjoy listening to audio played on portable audio devices through a car FM radio. Music from supports WM-PORT equipped WALKMAN® is transmitted to the car's FM radio via FM radio waves.

Stable clear sound

- Using the flexible transmitting antenna cable, it is possible to transmit a stable FM radio wave in any kind of car. The flexible transmitting antenna cable has a magnet to anchor itself to a metal part inside the car.
- Digital frequency selection, rather than analog, assures a more stable and clear transmission.

Selectable frequency from full-range of FM broadcasting (88.1-107.9 MHz)

You will be able to find an open frequency for transmitting, even where many stations are broadcast.

4 direct memory buttons

By memorizing often-used frequencies to the 4 memory buttons, you can select a frequency with one press.

Supports WM-PORT equipped Walkman

Available for recharging the WALKMAN® in a car

This unit takes power supply from the cigarette lighter socket, and supplies it to the WALKMAN.

* WALKMAN operation while charging varies depending on the WALKMAN.

Note

Connects to a 12 V DC car battery (only for negative ⊖ grounded cars) only. This unit cannot be connected to a 24 V DC car battery.

Compact design

The small design of this unit allows it to be used in the cigarette lighter socket. This unit is designed so as its protruding part is in one direction only, and when installed can be rotated in order to avoid any obstructions around the cigarette lighter socket.

No dry batteries

This unit connects to a 12 V DC car battery (cigarette lighter socket), available in many types of cars and trucks.

*1 "WALKMAN" and "WALKMAN" logo are registered trademarks of Sony Corporation.

Location and Function of Parts

- | | |
|----------------------------|---------------------|
| 1 Frequency display window | 4 Memory buttons |
| 2 Cigarette lighter plug | 5 WM-PORT connector |
| 3 Frequency +/- button | 6 Magnet |
| | 7 Antenna cable |

How to Use

Be sure to install this unit with the engine of the car running. If this unit is left plugged into the cigarette lighter socket when the engine is not running, power may be consumed from the car battery.

Do not connect or operate this unit, a WALKMAN while driving or waiting at a traffic signal. Park in a safe place first.

Notes

- Ensure that this unit is safely installed so as not to interfere with the operation of the accelerator or gears.
- Never perform connection and operation while your car is in motion.
- For details about car radio, car radio antenna and the connected WALKMAN, refer to the operating instructions supplied with the WALKMAN.

Set the car radio

- Set your car radio to FM.
- Select a channel that does not get good FM broadcast reception between 88.1 MHz–107.9 MHz.
The FM broadcast reception conditions may change as your location changes. If the selected frequency becomes occupied by a broadcast signal, select another open frequency.

Note

Turn the car radio volume down before setting the car radio.

Install the unit

- Connect the WM-PORT connector to the WM-PORT of your WALKMAN. (See fig. **A-①**)
 - Insert this cigarette lighter plug into the cigarette lighter socket securely until the frequency appears in the frequency display window (See fig. **A-②**).
 - Press the frequency +/- button repeatedly to select the same frequency that you set on the car radio.
Each press changes the frequency by 0.1 MHz, cycling through 88.1 MHz–107.9 MHz.
- Tips**
- Keep pressing the frequency +/- button to change the frequency rapidly.
 - The next time you turn on this unit, this unit is tuned to the last selected frequency.

- Start playback on the WALKMAN.

Notes

- Do not activate any bass boost or equalizer function on the WALKMAN. Otherwise, sound may be distorted.
- While connected to this unit, you cannot adjust the volume on the WALKMAN. Adjust the volume on the car audio unit.

- Route the antenna cable inside the car for best audio reception from this unit.

The method to install the antenna cable will depend on your car type. Find the position that provides the best reception, and then install the cable (See fig. **B**).

Notes

- Route the antenna cable close to the car antenna. This may help to improve the reception from this unit.
- For details about the car radio antenna, refer to the car operating instructions.

About the antenna cable magnet

The antenna cable is supplied with a magnet attached at the end. It is used to anchor the cable to a metal part of the car, such as a passenger's seat rail. The magnet at the end of the antenna cable is to anchor the antenna's best reception position and prevents it being moved, for example, when passengers get in or out of the car.

To use the antenna cable magnet, do the following (See fig. **C**).

- Route the antenna cable where the best reception from this unit is obtained.
- Attach the magnet at the end of the antenna cable to a metal part of the car, such as a passenger's seat rail, to anchor the antenna cable in place.
- If the reception from this unit becomes worse after attaching the magnet at the end of the antenna cable to a passenger's seat rail, etc., in step ②, revert to a previous position (to best reception) in step ①, without using the magnet (without attaching it to a passenger's seat rail, etc.).

Notes

- Be careful to line the cable so that it will not interfere with driving, become entangled with passenger movements, or be damaged by seat adjustments, etc.
- If the magnet is attached near movable objects, such as doors or seat rails, make sure that the antenna cable does not become entangled. This may cause the wire to break.
- Do not leave floppy disks or personal credit cards with magnetic coding near the antenna cable magnet.

If the reception from this unit declines

If the reception from this unit declines, even though it was good at the frequency set in the beginning, solve the problem referring to the following remedies, according to your circumstances.

After setup, reception from this unit declines while driving.

- FM broadcast reception may be poor in certain locations, such as underground parking, behind tall buildings, etc. If the car radio and this unit were set up in such a location; due to poor FM broadcast reception, the frequency you set for this unit may be already occupied. If so, the occupying FM broadcast station is received when its reception conditions improve (as you drive) resulting in interference with this unit's same set frequency. In this case, reset the car radio and this unit to another open frequency in a location where the FM broadcast reception is better.

Reception from this unit is disrupted when you move to a new location.

- FM broadcast reception conditions vary from one location to another. After setting an open frequency in one location, as you move to other areas, that frequency may become occupied by a broadcast station's signal. In this case, reset the frequency on both the car radio and this unit to another open frequency.

Interference or noise occurs.

- Other FM broadcasts or non-licensed broadcasts in a city area may interfere with the reception of the frequency set for this unit. In this case, set the car radio and this unit to a less-influenced frequency.

To memorize the selected frequency

The frequency for the memory buttons is set to 88.1 MHz at the factory setting.

Select the frequency in step 3 of "Install the unit," then hold down one of the memory buttons until the memory button number appears in the frequency display window.

Once you memorize the desired frequency, you can select it by simply pressing the memory button.

Note

If a frequency is already memorized on the button, that frequency will be replaced with the new one.

Charge your WALKMAN

WALKMAN operation while charging varies depending on the WALKMAN.

- Set the WALKMAN to recharge.
It may not be necessary to set the WALKMAN to recharge. (See WALKMAN's Operation Guide.)
- When charging is finished, disconnect the WALKMAN from this unit.

Notes

- Plug securely into the cigarette lighter socket.
- This unit may not fit, depending on the location or shape of the cigarette lighter socket.
- Be careful to route all the cables properly so that:
 - they will not interfere with your driving.
 - they will be out of the reach of children.
- Install this unit in a manner that will not hinder the airbag function in an emergency.
- Do not use the device in a place subject to liquid or moisture to avoid fire or electric shock.
- Do not place this unit or the WALKMAN in a location where it is subject to extreme high temperature. It may result in damage.

While not using this unit

To avoid unnecessary car battery consumption, unplug this unit from the cigarette lighter socket when not in use.

When you turn the car engine off

Unplug this unit from the cigarette lighter socket whenever the engine of the car is not running. Depending on the car type, even if the engine is off, the power supply may not turn off automatically. In this case, this may cause unnecessary car battery consumption.

Fastening the unit

You can fasten the unit to your car interior using the supplied Hook and Loop Fasteners.

- Peel the back of the one of the Hook and Loop Fastener (See fig. **D-①**).
- Stick the Hook and Loop Fastener to the unit (See fig. **D-②**).
- Peel the back of the other Hook and Loop Fastener film sheet (See fig. **D-③**).
- Stick the Hook and Loop Fastener to a flat surface of the car interior (See fig. **D-④**).
- Match the Hook and Loop Fasteners to fasten the unit (See fig. **D-⑤**).

Notes

- Do not place the unit or the Hook and Loop Fastener onto places such as:
 - the shift lever or the hand brake
 - around the moving parts of the driver's seat or the passenger's seat
 - in direct sunlight, such as on the dashboard or steering wheel, where it may deform
 - where the unit stands vertically.
- Remove any dirt or dust from surfaces before attaching the fasteners.

Fuse Replacement

If this unit does not work correctly, check the fuse of the cigarette lighter plug. If the fuse is blown, replace it (See fig. **E**).

- Pull this unit out of the cigarette lighter socket.
- Detach the end of the plug by turning it counter-clockwise.

- Take out the fuse.
- Check the fuse.
If the fuse is blown, go to Step **5**.
If the fuse is not blown, go to Step **6**.
- Install a new fuse.
Use a fuse of the correct amperage, as stated on the fuse compartment of this unit (1 A, 125 V, 20 mm).
- Insert the fuse.
- Reattach the end of the plug by turning it clockwise firmly.

Notes

- Use of a higher amperage fuse may cause serious damage or fire.
- Do not use a piece of wire instead of a fuse.
- If the replaced fuse blows again, consult your dealer.

Precautions

On safety

- Do not connect or operate this unit, a car radio, or a WALKMAN while driving or waiting at a traffic signal. Park in a safe place first.
- Unplug this unit from the cigarette lighter socket whenever the engine of the car is not running. Depending on the car type, even if the ignition key is off, the power supply may not turn off automatically. In this case, this may cause unnecessary car battery consumption.
- When not in use, unplug this unit from the cigarette lighter socket and store in a safe place where it will not interfere with your driving or become entangled in parts of the car interior (seat, door, etc.). To disconnect the unit, grasp the unit and pull it. Never pull the cord connected to the unit.
- Should any liquid or solid object fall into the unit, disconnect the unit from the cigarette lighter socket and the equipment and have the unit checked by qualified personnel before operating it any further.

Installation

- Do not place this unit in a location where it is:
 - subject to extreme high temperature.
 - subject to direct sunlight or near a heat source.
 - subject to mechanical vibration or shock.
 - subject to excessive dust.
- Be sure to fully secure the connected device connected to the unit to avoid moving when braking.

Operation

- Never yank or pull the cables. This may cause malfunctions or wire breaks.
- To prevent damage, be careful not to drop or hit the unit. This may cause a mechanical shock or malfunctions to the unit.
- This unit may become warm while using. This is not a malfunction.
- After using, disconnect the unit from the cigarette lighter socket and the equipment.

On charging

- Make sure the current and voltage of the WALKMAN rechargeable device match the outlet.
- For safety, if the input current is too high, the unit will automatically shut down.
- To avoid short-circuiting, do not allow the terminals of the unit or connector to touch any metal object.
- Note that data stored in the WALKMAN connected to this unit may be lost or damaged if the engine is started or stopped with this unit inserted into the cigarette lighter socket.

Troubleshooting

Should any problem persist after you have made the following checks, consult your nearest Sony dealer.

There is no sound from the WALKMAN to the car radio.

- This unit is not fully plugged into the cigarette lighter socket.
 - Insert this unit correctly and securely.
- This unit is not fully connected to the WALKMAN.
 - Connect this unit correctly and securely.
- The transmission frequency of the unit and the FM car radio do not coincide.
 - Set both the unit and the FM car radio to the same frequency.
- There is no sound from the connecting WALKMAN.
 - Start playback on the WALKMAN.
 - Set the volume control of the WALKMAN as high as possible but not so high that the audio signal becomes distorted.

The volume is low.

- The volume of the WALKMAN is set too low.
 - Set the volume control of the car audio unit as high as possible but not so high that the audio signal becomes distorted.

The sound is distorted.

- The bass boost function on the WALKMAN is on.
 - Cancel the bass boost function.

Noise is generated.

- The frequency of the unit does not coincide with the FM car radio.
 - Set the unit and the FM car radio to the same frequency.
- The reception from this unit is not good.
 - Route the antenna cable for the unit inside the car. Position the antenna close to the car antenna, or stabilize the antenna cable with the magnet to the passenger's seat rail, and so on. This may help to improve the reception from this unit.
- The FM car radio receives a broadcast signal.
 - Select an empty frequency (a non-broadcast frequency, indicated by a static hissing sound).
- The selected frequency is occupied or the signal is jammed.
 - Select another open frequency which is less influenced by jamming (a non-broadcast frequency, indicated by a static hissing sound).

The sound is interrupted.

- The signal is jammed locally.
 - Select another frequency which is less influenced by jamming (a non-broadcast frequency, indicated by a static hissing sound).

The frequency display window does not light.

- This unit is not completely plugged into the cigarette lighter socket.
 - Insert this unit correctly and securely.
- Depending on the car type, the engine must be started for electric current to flow to the cigarette lighter socket.
 - Start the engine.
- The fuse is blown.
 - Replace the fuse.

Specifications

Transmission system

multiplex stereo

Transmission frequency

88.1 MHz–107.9 MHz (0.1 MHz step)

Electric strength

less than 250 μV/m (3 m)

Power voltage

DC 12 V (only for negative ⊖ grounded cars)

Input

WM-PORT connector

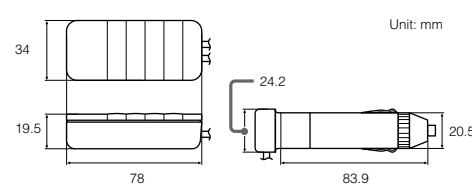
Rated output voltage

DC 5.0 V

Rated output current

800 mA

Dimensions



WM-PORT cable length

Approx. 0.5 m (1.6 ft)

Cigarette lighter plug cable length

Approx. 1 m (3.3 ft)

Antenna cable length

Approx. 1.5 m (4.9 ft)

Mass

Approx. 130 g (4.6 oz) (including cables)

Supplied accessories

- Operating Instructions (1)
- Warranty (1)
- Hook and Loop Fasteners (1 pair)

Design and specifications are subject to change without notice.