

SONY[®]

3-074-603-11 (1)

Network Function Operating Instructions




Registration code (for a detailed explanation of this cord, see page 28.)

© 2002 Sony Corporation

DCR-TRV50 Network 3-074-603-11(1).US

On trademarks

- ImageStation is the registered trademark of Sony Corporation.
- "Memory Stick" and  are registered trademarks of Sony Corporation.
- The BLUETOOTH trademarks are owned by their proprietor and used by Sony Corporation under license.
- NetFront by Access Co., Ltd. is adopted for the Internet function of this product. NetFront is a registered trademark of Access Co., Ltd in Japan.
Copyright © 1996 – 2001 ACCESS CO., LTD.
- Portions of the supplied software are based partially on the work of the Independent JPEG Group.

All other product names mentioned herein may be the trademarks or registered trademarks of their respective companies. Furthermore, "™" and "®" are not mentioned in each case in this manual.

No compensation for your recordings

Any recording contents or downloaded files cannot be compensated for being lost due to redording / playback malfunction or storage media problems.

Precautions

- Before using the network function, make sure to set the clock on the camcorder. For details, refer to the operating instructions of the camcorder. If you use the network function without setting the clock, you may not be able to send/receive email, or view a web page.
- Do not remove the battery pack or disconnect the AC power adaptor while operating in NETWORK mode. The setup for the NETWORK mode may be lost. Also, exit the NETWORK mode when setting the POWER switch to OFF (CHG) or switching the mode. These are to prevent the NETWORK mode setup from being lost.
- It is recommended that you make backup copies of your email messages and your network preferences. These may be lost from time to time due to memory corruption. To save the network preferences, write them down on paper, or use "Setup memo," described (p. 108). Also, this data may be lost when the camcorder is repaired by services.
- The network function with this product is available only in the U.S.
- The reset button cannot reset the network preferences.

Note on network operation when using the battery pack

When the remaining battery time is insufficient in NETWORK mode, use the AC power adaptor or replace the battery pack with a fully charged battery pack. Before connecting the AC power adaptor or replacing the battery pack, be sure to exit the NETWORK mode.

Table of contents

Introduction

The network function on the camcorder ...	4
Basic operations in the NETWORK mode	6
How to use the Network Menu	6
How to hold your camcorder when operating in the NETWORK mode	7
How to use the stylus	8
How to input characters	9
Character input display	11
The available characters list	12
Character input setting	17

Preparation

Using the NETWORK functions	18
Overview of the Bluetooth wireless technology	19
Registering a Bluetooth device	20
Using your Modem Adaptor with Bluetooth Function	20
When the registration has failed	24
Displaying information on your camcorder	24
Radio wave indication	26
Selecting other Bluetooth devices from the list	26
Deleting a registered Bluetooth device from the list	26
Customer registration	28
DI customer registration	28
Online registration using your PC ...	28
Online registration with your camcorder	28
Registering your album on the Web	31
Internet service provider	32
Registering with "So-net"	33
Setting network preferences	34
Entering your DI customer ID and password	34
Setting your provider preferences ...	36

Network Operation

Making your album on the Web	45
Uploading images to your album on the Web	45
Viewing or editing your album on the Web	52
Deleting images from your album ...	57
Finishing viewing or editing the album	57

Using email	58
Sending email	58
Using the address book	69
Receiving email	75
Deleting unnecessary email	80
Viewing web pages	82
Viewing web pages	82
How to use the menu bar on the browser	84
Storing the web page into a "Memory Stick" - Page Memo	90
Shutting down the browser	95

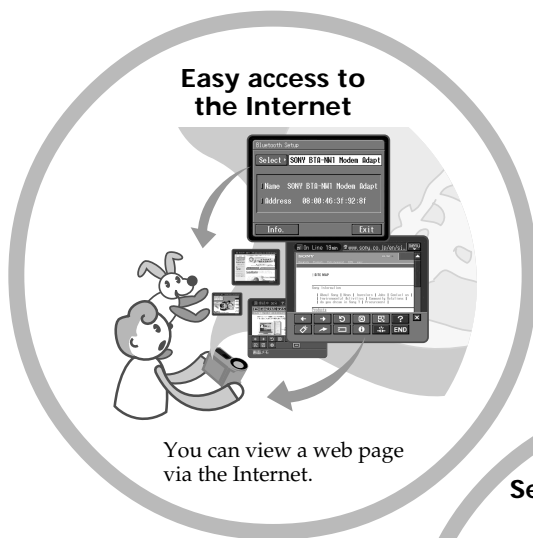
Additional Information

File storage destinations and file names	96
Troubleshooting	97
Trouble accessing the Internet	97
Trouble with email	98
Trouble viewing web pages	99
Troubles about the album on the Web	100
Adjusting the LCD screen (CALIBRATION)	100
Specifications	101
Messages	102
General	102
Album on the Web	103
Email	103
Browser	104
Album error codes	105
Glossary	106
Setup memo	108

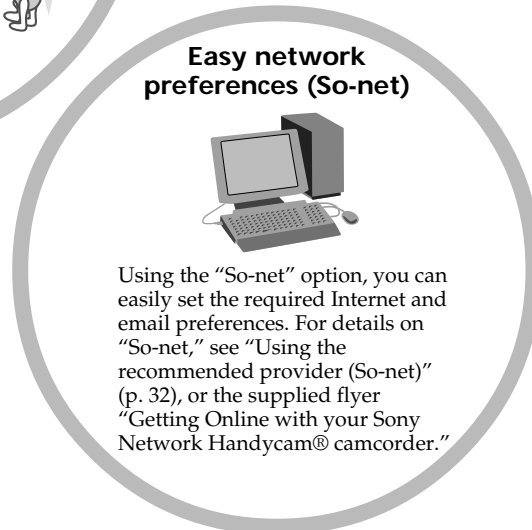
- Introduction -

The network function on the camcorder

Congratulations on your purchase of this Sony Handycam. This Handycam can access to the Internet through your provider using a dial-up networking connection with a Bluetooth device. You can view web pages, receive email, and send email with images recorded on your camcorder attached. Customer registration allows you to use the "So-net" option for setting network preferences easily, as well as an "album on the Web", your own private Internet-based photo album. The "album on the Web" uses the "ImageStation" function. The communication system is Bluetooth Ver.1.1 and its compatible Bluetooth profiles are the "Generic Access Profile" and the "Dial-up Networking Profiles".



The network function on the camcorder



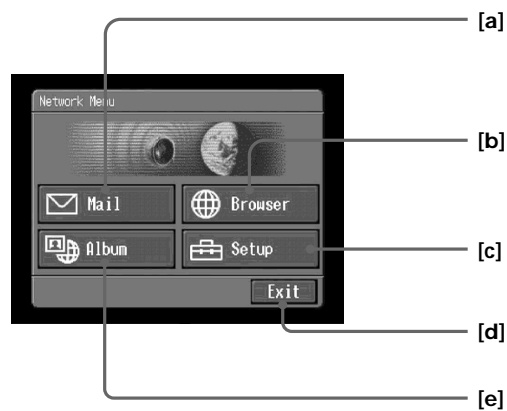
Set the camcorder's clock setting before using the Network functions. (The default setting is OFF.) If you do not set the clock setting, you cannot send and receive emails or view web pages. You also have to set up your camcorder and the peripheral device, and complete required registrations (DI customer registration, etc.). For more information, see the supplied flyer "Getting Online with your Sony Network Handycam® camcorder". "DI" in "DI customer ID" stands for "Digital Imaging".

Basic operations in the NETWORK mode

This section describes basic control ways to operate your camcorder, those which are used for network operations.

How to use the Network Menu

To access the Network Menu, refer to "Accessing the network" in the operating instructions supplied with your camcorder.



[a]: Send and receive email. For details, see "Using email" (p. 58).

[b]: View a web page through the Internet. For details, see "Viewing web pages" (p. 82).

[c]: You have to make various settings using this menu before using the network function. For details, see "Setting network preferences" (p. 34).

[d]: Exit the NETWORK mode.

[e]: Upload images to your album on the Web and post the images on the Internet. For details, see "Making your album on the Web" (p. 45).

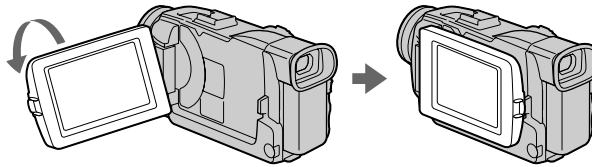
The actual screens may differ slightly from the illustrations in this network function operating instructions.

Basic operations in the NETWORK mode

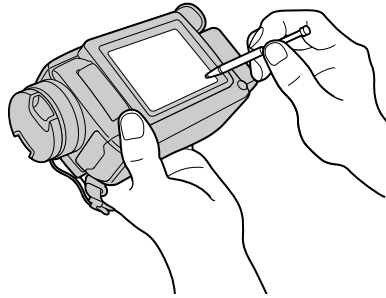
How to hold your camcorder when operating in the NETWORK mode

When operating in the NETWORK mode, you can turn the LCD panel over and move it back to your camcorder with the LCD screen facing over to use the stylus (for touch panel operation, supplied).

- 1 Turn the LCD panel over and move it back to your camcorder with the LCD screen facing over.



- 2 Hold your camcorder as illustrated below.



The way to hold and operate your camcorder varies depending on the model. For detail, refer to the "Operating Instructions" supplied with your camcorder.

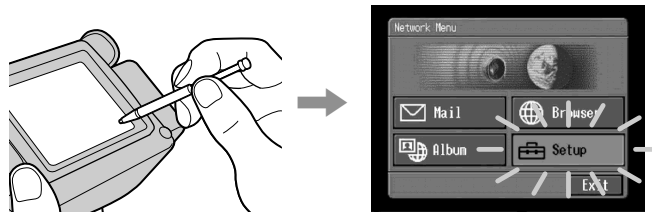
Basic operations in the NETWORK mode

How to use the stylus

The buttons required for operating your camcorder are displayed on the LCD screen. Operate by pressing the buttons on the screen directly but lightly with the stylus provided. In this manual, pressing the buttons in this way using the stylus is referred to as "tapping".

Tap the desired button on the screen with the stylus.

The selected button turns orange.



Notes

- Do not tap them with sharp-pointed objects other than the stylus supplied.
- Do not tap the LCD screen too hard.
- Do not touch the LCD screen with wet hands.
- When the LCD screen gets dirty, use the supplied cleaning cloth.
- You cannot drag icons, like on a computer, by touching and sliding across your camcorder screen with the stylus.



- Refer to the operating instructions supplied with your camcorder for the stylus storage location. To avoid losing the stylus, we recommend that you return it to the storage location after use.

Basic operations in the NETWORK mode

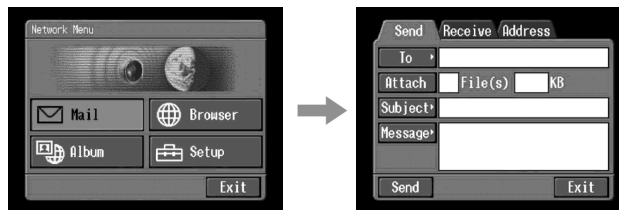
How to input characters

You have to frequently enter characters, such as email addresses, or web pages addresses (URL), to use the network function. This section describes how to input characters.

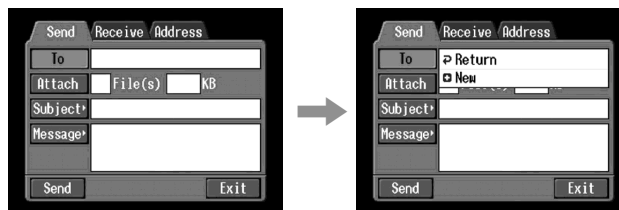
- 1** (1) Open the Network Menu.
For details on how to open the Network Menu, refer to “Accessing the network” in the operating instructions supplied with your camcorder.



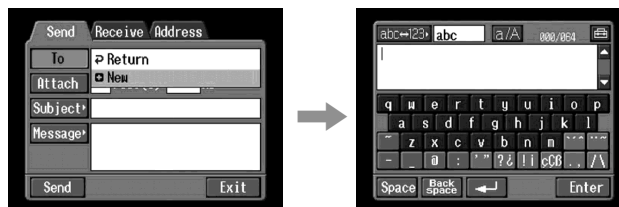
- 2** (2) Tap [✉ Mail].
The Send screen appears.



- 3** (3) Tap [To].



- 4** (4) Tap [📧 New].
The character input screen appears.



Basic operations in the NETWORK mode

2 Selecting the character type

Tap [abc↔123], then tap the desired character type.



abc: When inputting alphabetical characters.
123: When inputting numerical characters.

When you selected abc



When you selected 123



3 Inputting characters

(1) Tap the character you want to input.



(2) After you input the characters, tap [Enter].

The screen which is displayed before you display the character input screen appears.



Basic operations in the NETWORK mode

Character input display



- 1 [a/A] button**
[a/A] button is displayed when you input alphabetical characters. You can switch between upper case and lower case.
- 2 [abc↔123] button**
A list box appears when you tap the [abc↔123] button. Tap the desired type of letter from the list box.
- 3 Input byte number/maximum byte number**
- 4 Preferences**
You can change the keyboard type for alphabet input.
- 5 Text area**
You can scroll up or down the display by tapping ▲ or ▼.
- 6 [Space] button**
A space is entered.
- 7 [Back space] button**
The letter right before the cursor is deleted. If you tap the button for about three seconds, all the characters before the cursor are deleted.
- 8 [↵] button**
The cursor moves to a new line.
- 9 [Enter] button**
Tap this button to decide or close the input screen.

Basic operations in the NETWORK mode

The available characters list

When selecting [abc]

Alphabetical characters

The alphabet keyboard has 2 types (PC Style and Alphabetical order). The default setting is PC arrangement. You can change the keyboard setting in [F5]. Refer to page 17 for more information.

(PC Style)



(Alphabetical order)



a	b	c	d	e	f	g	h	i	j	k	l	m
n	o	p	q	r	s	t	u	v	w	x	y	z
A	B	C	D	E	F	G	H	I	J	K	L	M
N	O	P	Q	R	S	T	U	V	W	X	Y	Z

Symbol characters

The symbol characters below are inputted by single tapping:

~	-	_	@	:
---	---	---	---	---

The green keys input the symbol characters.

The symbol characters change as follows:

Key	Character
[...]*	a: à → á → â → a →... e: è → é → ê → e →... i: ì → í → î → i →... o: ò → ó → ô → o →... u: ù → ú → û → u →... y: ý → y →... A: À → Á → Â → A →... E: È → É → Ê → E →... I: Ì → Í → Î → I →... O: Ò → Ó → Ô → O →... U: Ù → Ú → Û → U →... Y: Ý → Y →...
[...]*	a: ä → å → a →... e: ë → e →... i: ï → i →... n: ñ → n →... o: ö → ö → o →... u: ü → u →... y: ÿ → y →... A: Ä → Å → A →... E: Ë → E →... I: Ï → I →... N: Ñ → N →... O: Ö → Ö → O →... U: Ü → U →...
[...]	' → " → ' → ...
[? &]	? → ¿ → ? → ...
[!]	! → ¡ → ! → ...
[ç Ç ß]	ç → Ç → ß → ç →...
[. ,]	. → , → . → ...
[/ \]	/ → \ → / → ...

* You can input the alphabet characters with accent symbols. When you input the characters, tap [...] or [...] after inputting a, e, i, n, o, u, y, A, E, I, N, O, U or Y.

Basic operations in the NETWORK mode

When selecting [123]

Symbol characters

(Numerical order)



1	2	3	+	()	\$	€	\	%
4	5	6	-	[]	&	^		~
7	8	9	/	{	}	`	"	'	,
*	0	#	=	<	>	.	:	;	_

To switch between upper and lower case alphabet letters

Tap [a/A] to change the alphabetical keyboard, then enter characters.

To delete a character

Move the cursor with the stylus to the right of the character at which you want to delete, tap [Back space]. The character at the left of the cursor is deleted.

To add a character

Move the cursor with the stylus to the position at which you want to add a character, then input characters.

To start a new line

Tap [↵].

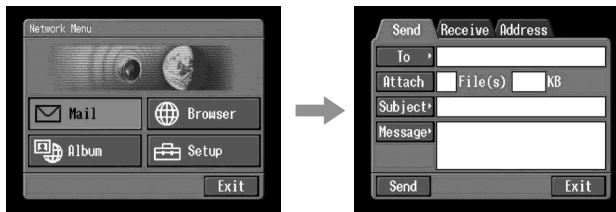
Basic operations in the NETWORK mode

E.g., Enter "Hello" into the Subject item on the Send screen

- 1** (1) Open the Network Menu.
For details on how to open the Network Menu, refer to "Accessing the network" in the operating instructions supplied with your camcorder.



- (2) Tap [Mail].
The Send screen appears.

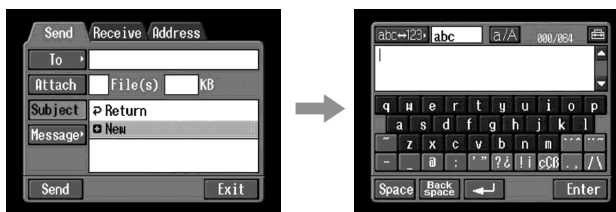


2 Entering the subject of a message

- (1) Tap [Subject].



- (2) Tap [+ New].
The character input screen appears.

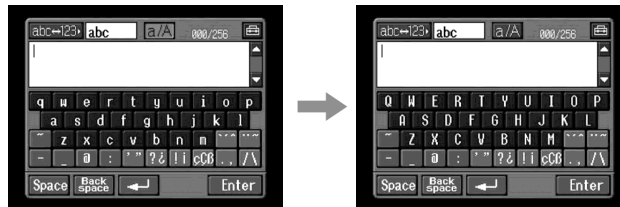


Basic operations in the NETWORK mode

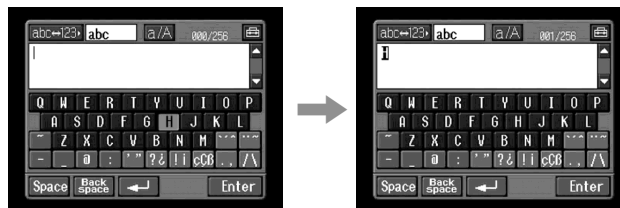
- 3** (1) Tap [abc↔123], then tap [abc].



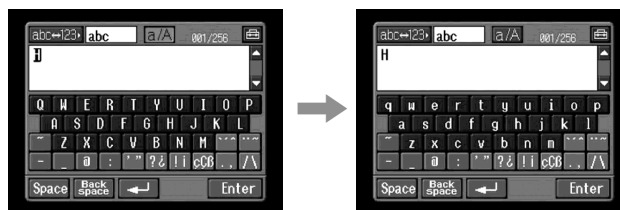
- (2) Tap [a/A] to be able to enter upper-case letters.



- (3) Tap [H].
"H" is entered.

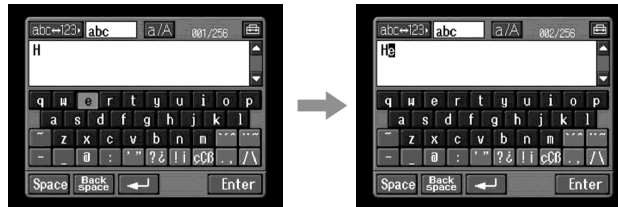


- (4) Tap [a/A] to be able to enter lower-case letters.

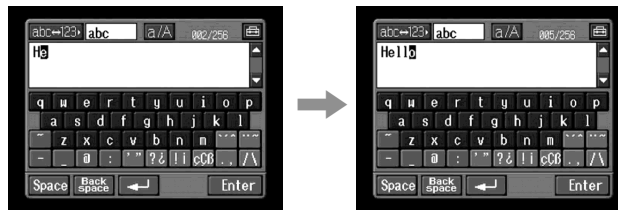


Basic operations in the NETWORK mode

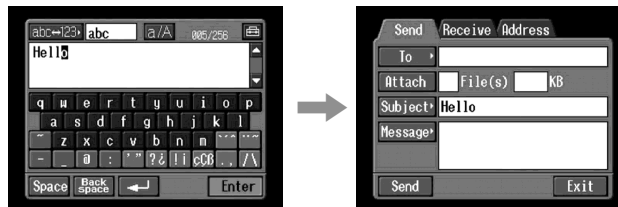
- (5) Tap [e].
"e" is entered.



- (6) Tap [l], [l] and [o].
"llo" is entered.



- (7) Tap [Enter].
"Hello" is entered and the Send screen appears again.



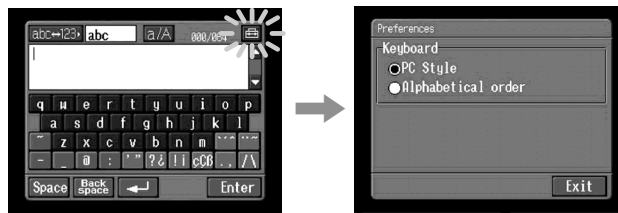
Basic operations in the NETWORK mode

Character input setting

Keyboard

You can change the display of the alphabet, PC arrangement keyboard or ABC arrangement keyboard into a setup you want when you input characters.

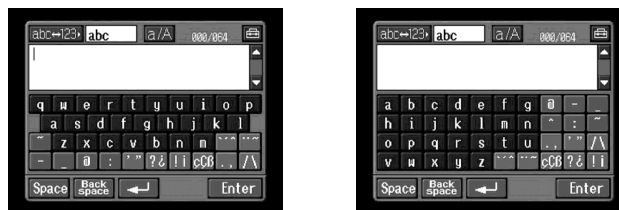
- 1 Tap  in the character input screen.



- 2 Tap the desired setting.


You can set as the following two displays when [abc↔123] is set as [abc].
(PC Style is the default setting.)

- PC Style (PC arrangement keyboard)
- Alphabetical order (ABC arrangement keyboard)



PC Style

Alphabetical order

To switch the setting, tap  on the upper-right LCD screen.

- Preparation -

Using the NETWORK functions

There are three Network functions, namely album on the Web, email, and browser. To use the album on the Web and So-net, you need to complete customer registration.

“So-net” is charged service. For more information, see the supplied flyer “Getting Online with your Sony Network Handycam® camcorder”.

To fully use the function in the NETWORK mode, you have to complete the following registrations and setup tasks via your camcorder:

- 1 Bluetooth device registration (p. 20)**
- 2 DI customer registration (p. 28)**
- 3 Album registration (p. 31)**
- 4 So-net registration* (p. 33)**
- 5 Network Setup (p. 34)**

* So-net registration is not necessary to use the other provider.

The above registrations can also be done on the web site using a computer. Access to the following URL:

“<http://www.myimagecam.com/>”

Overview of the Bluetooth wireless technology

What is the Bluetooth wireless technology?

The Bluetooth wireless technology allows communication between various Bluetooth devices without using cables. Devices which can use this technology include PCs, computer peripheral devices, PDAs, and mobile phones. This omnidirectional communication system enables communication even if the Bluetooth device is in a bag or having obstacles between the devices.

Also, the Bluetooth wireless technology has advanced security functions, such as scrambled frequencies and data encryption.

Authentication

The authentication routine can block unspecified users' access to this network. When attempting communication with an unregistered Bluetooth device, the devices must first be registered with each other by entering a common passkey to each device. When connecting with a previously registered Bluetooth device, communication starts without entering the passkey.

Overview of the Bluetooth wireless technology

Registering a Bluetooth device

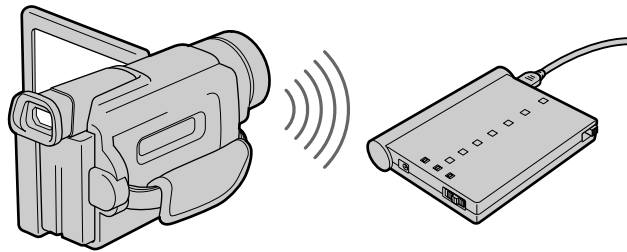
This section describes making a registration of a Bluetooth device. Here we describe the procedure for registering the Sony Modem Adaptor with Bluetooth Function. Once the registration is completed, your camcorder can connect to your Bluetooth device without reregistering the device. You can register up to three Bluetooth devices. Also, refer to the operating instructions supplied with your Bluetooth device.

For more information about Bluetooth devices compatible with your camcorder, access the following URL: "<http://www.myimagecam.com/>"

Notes

- When using Sony BTA-NW1 Modem Adaptor with Bluetooth Function, place it at a location that has no obstacles between your camcorder and the device. The distance between the devices must be within 10 m (33 feet).
- The connection may be interrupted depending on the communication conditions.

Using your Modem Adaptor with Bluetooth Function



1 Preparing the Modem Adaptor with Bluetooth Function

Set the Modem Adaptor with Bluetooth Function to connection standby (BONDING). For details, refer to the operating instructions supplied with your Modem Adaptor with Bluetooth Function.

Overview of the Bluetooth wireless technology

2 Specifying your Modem Adaptor with Bluetooth Function as the connection device

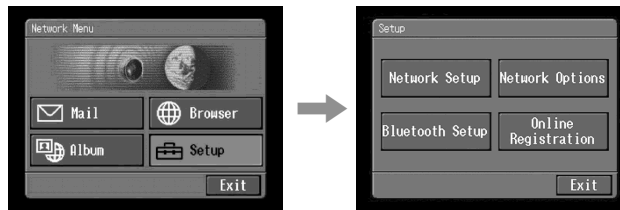
- (1) Open the Network Menu.

For details on how to open the Network Menu, refer to "Accessing the network" in the operating instructions supplied with your camcorder.



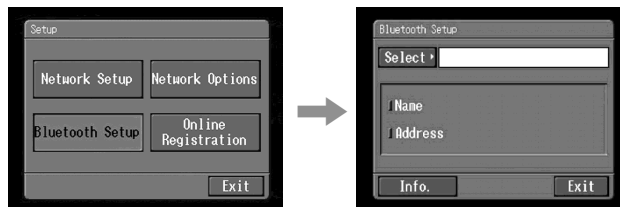
- (2) Tap [Setup].

The Setup screen appears.



- (3) Tap [Bluetooth Setup].

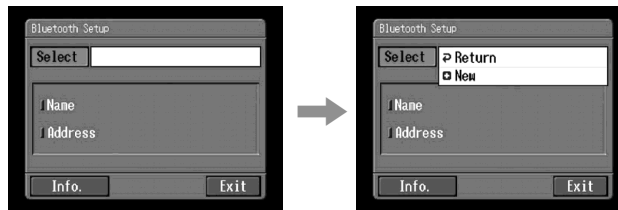
The Bluetooth Setup screen appears.



Overview of the Bluetooth wireless technology

(4) Tap [Select].

The Bluetooth devices list appears. When making a registration for the first time, only [↩ Return] and [+ New] are indicated. The list shows up to three Bluetooth devices. You can select one of the latest used three Bluetooth devices from the list.



Tip

The last-used Bluetooth device is listed next to [↩ Return] and [+ New].

(5) Tap [+ New].

Your camcorder starts searching for your Bluetooth devices. When the searching is completed, the available Bluetooth devices list appears. When some Bluetooth devices with the same name appear, display each Bluetooth device address by tapping [More info].

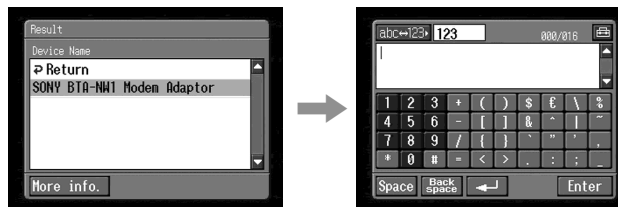


Notes

- The search takes from about 10 to 60 seconds. The time depends on the number of Bluetooth devices around your camcorder.
- If the Bluetooth device you want to register is not found, carry out the procedure again from step 4.

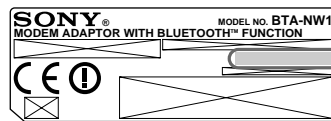
(6) Tap the desired Bluetooth device.

The character input screen appears.



Overview of the Bluetooth wireless technology

- (7) Enter the passkey.
For details on how to input characters, see “How to input characters” (p. 9).
For example, when using the BTA-NW1 Modem Adaptor with Bluetooth Function, the passkey is its serial number which is indicated on the label on the rear panel.



Passkey
The number used when registering a Bluetooth device

Preparation

Tip on “Passkey”

The passkey is an identification number needed to allow two Bluetooth devices to communicate with each other. The connection will be permitted after entering the passkey. This “Passkey” is also referred to as a “Bluetooth passkey”, “PIN”, “Bluetooth PIN”, etc. For details, refer to the operating instructions supplied with your Bluetooth adaptor.

- (8) After entering the passkey, tap [Enter].
After the registration is completed, the Bluetooth Setup screen appears again. “Bluetooth Registration Complete” message is displayed. Tap [OK].
The selected Bluetooth device is specified.



Note

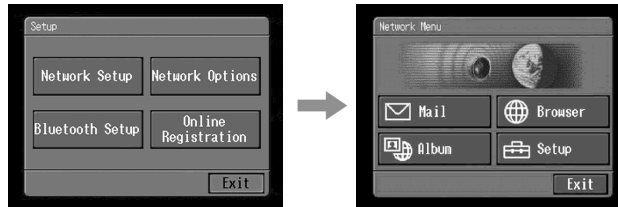
When the message “Bluetooth Registration Error Check the Passkey” is indicated, tap [OK]. Carry out the procedure again from step 4.

- (9) Tap [Exit].
The Setup screen appears again. For details on how to turn off the Modem Adaptor with Bluetooth Function, refer to the operating instructions supplied with your Modem Adaptor with Bluetooth Function.



Overview of the Bluetooth wireless technology

- (10) Tap [Exit].
The Network Menu appears again.



When the registration has failed

After pressing [OK], and carry out the procedure described in step 4 on page 22 again.



Displaying information on your camcorder

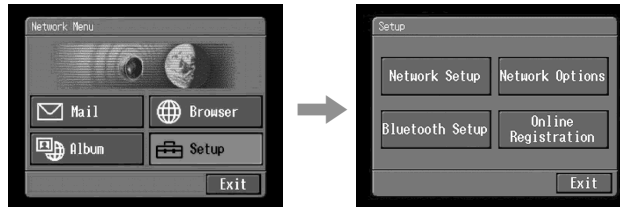
You can display your camcorder information.

- (1) Open the Network Menu.
For details on how to open the Network Menu, refer to "Accessing the network" in the operating instructions supplied with your camcorder.



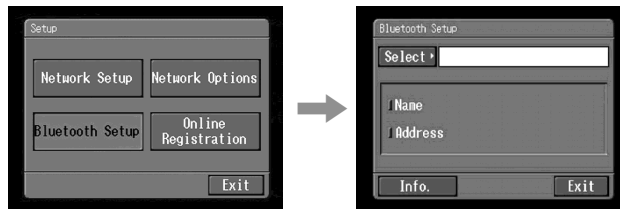
Overview of the Bluetooth wireless technology

- (2) Tap [Setup].
The Setup screen appears.



Preparation

- (3) Tap [Bluetooth Setup].
The Bluetooth Setup screen appears.



- (4) Tap [Info.].
The Bluetooth Setup: Self information screen appears.



The model name


This is the unique address assigned to each camcorder at the factory. This address is used when exchanging information between devices. This address cannot be modified. (The number indicated on the illustration is an example number.)

To return Bluetooth Setup screen

Tap [Return].

Overview of the Bluetooth wireless technology

Radio wave indication

 indicates the radio wave status of the connected Bluetooth device. (Use this indication as a guide.)

Selecting other Bluetooth devices from the list

Tap the Bluetooth device you want to specify in step 4 on page 22. The device information is indicated.
Tap [Exit].

Deleting a registered Bluetooth device from the list

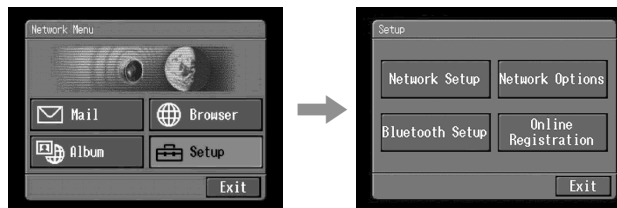
You can register up to three Bluetooth devices on your camcorder. When deleting a Bluetooth device from the list, follow the procedure below.

- (1) Open the Network Menu.

For details on how to open the Network Menu, refer to “Accessing the network” in the operating instructions supplied with your camcorder.

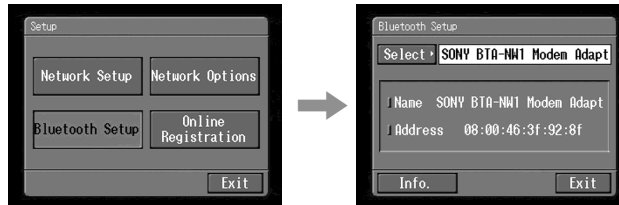


- (2) Tap [Setup].
The Setup screen appears.



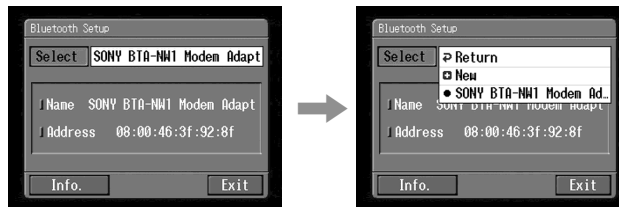
Overview of the Bluetooth wireless technology

- (3) Tap [Bluetooth Setup].
The Bluetooth Setup screen appears.

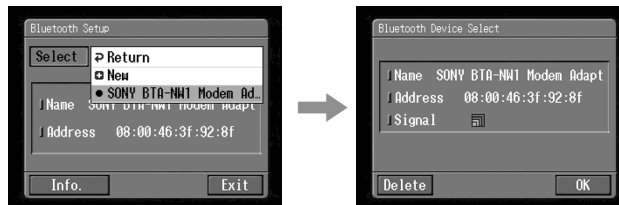


Preparation

- (4) Tap [Select].
The Bluetooth devices list appears.



- (5) Tap the device you want to delete.
The device name and address of the selected device are indicated.



- (6) Tap [Delete].
The selected device is deleted from the list.

Customer registration

DI customer registration

The camcorder offers network functions in addition to its basic functions. In order to take full advantage of these network functions, you should complete the DI (Digital Imaging) customer registration for the services provided. For details on services available, see the supplied flyer "Getting Online now with your Sony Network Handycam® camcorder." Before making your DI customer registration, please see "Online Privacy Policy" on page 109 and agree to the terms. For the latest information, please refer to "<http://www.sel.sony.com/SEL/legal/privacy.html>".

You can make your DI customer registration in one of the following ways:

- ① Online registration using your PC (recommended)
- ② Online registration using your camcorder

When you complete your DI customer registration, your DI customer ID and password are issued immediately.

Online registration using your PC

You can make your DI customer registration using your PC. The URL of the web site for online registration is "<http://www.myimagecam.com/>".

Online registration with your camcorder

You can make your DI customer registration with your camcorder. For online registration using your camcorder, you must use a private line. Since the registration process is assigned a toll-free telephone number, the telephone charge for the online registration will not be charged to your telephone bill.

Notes

- Set up your camcorder and your Bluetooth device so that they are communicating with each other beforehand. For details, refer to "Registering a Bluetooth device" on page 20.
- It may take a significant amount of time to complete your online registration.
- Use the AC power adapter when registering online using your camcorder.
- Be sure to set up the clock of your camcorder beforehand. For details, refer to "Setting the date and time" in the operating instructions supplied with your camcorder.

The procedure for registering online with your camcorder is as follows:

Customer registration

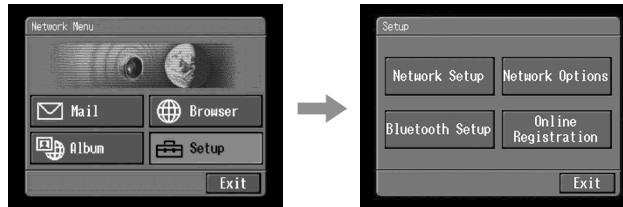
- (1) Open the Network Menu.

For details on how to open the Network Menu, refer to “Accessing the network” in the operating instructions supplied with your camcorder.



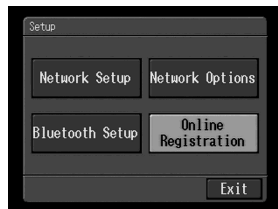
- (2) Tap [Setup].

The Setup screen menu appears.



- (3) Tap [Online Registration].

The screen for verifying the connection appears. Tap [Connect]. Your camcorder starts connecting to the site. Once the connection is completed, the online registration screen appears. Set the Bluetooth device to connection standby using the camcorder beforehand. For details, refer to the operating instructions supplied with your Bluetooth device.



- (4) Register your information following the on-screen guidance.

When registering for the first time, tap [Registration link] from the menu.

Note

When you are registering, you will need the registration code located on the cover of your operating instructions. After entering this code, follow the on-screen guidance.

Customer registration

- (5) After you complete your customer registration, continue on to register your album (page 31).

Note

When registering online with your camcorder, the connection may be disconnected. However, data entry can be done offline. When your camcorder needs to connect with the site, the screen for verifying the connection appears. Tap [Connect], the connection will be established again.

About the DI customer ID and password

After customer registration, album registration, or "So-net" registration has been completed, a DI customer ID and password will be displayed. The ID and password are very important, so be sure to write them down in the "Setup memo" on page 108.

Continue to "Registering your album on the Web".

Registering your album on the Web

To upload an image recorded with your camcorder to your album on the Web, you have to complete your album registration. Before registering, be sure to read "ImageStation's Privacy Policy" (p. 109) and "Member Agreement" (p. 114). If you do not agree to the terms, you cannot complete the registration. The Album registration is done by either of the following ways:

- 1 Complete the album registration during your DI customer registration step
- 2 Complete the album registration after the DI customer registration is completed

1 Complete the album registration during your DI customer registration step

- (1) Continue the album registration after completing DI customer registration. Fill in the album registration form following on-screen directions.

After the album registration is completed, continue on to the "So-net" registration screen (page 33).

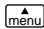
2 Complete the album registration after the DI customer registration is completed

- (1) Display the online registration screen following the procedure described in "Completing the online registration with your camcorder" (p. 28).
- (2) Tap [Login link].
- (3) Enter your DI customer ID and password, and log in.
- (4) Tap [Album sign-up link].
- (5) Complete the album registration following the on-screen guidance.

Tip on Member name

Your member name is a nickname used on the ImageStation web site. Once you register your member name, that member name is indicated on your album when it is opened using a computer, and it is also used on your invitation card.

Tip

- If you do not have email address, complete registering "So-net" before registering your album on the Web.
- To cancel your album registration, then tap  on the upper-right LCD screen, and tap **END** in the menu bar. For detail on how to display menu bar, refer to page 84.

Internet service provider

To access the Internet, you have to sign-up with an Internet service provider (ISP). The provider acts as an intermediary between your camcorder and the Internet. After you sign-up with a provider; you can view various web pages through the Internet, you can send and receive email using your email address. The email address is a destination address in email transmission. Also, various other services may be available depending on your provider.

Notes

- A credit card may be required to sign-up with some providers.
- The connection fee depends on your provider.

Using the recommended provider (So-net)

"So-net" is an Internet service provider. For details on the services of "So-net", see the supplied flyer "Getting Online with your Sony Network Handycam® camcorder."

The "So-net" option makes it easy to set the Internet and email preferences. Once you complete your DI customer registration, you can get your DI customer ID and password. Entering your DI customer ID, password, and the telephone number of an access point, you can access the Internet right away.

Using the other provider

When using an ordinary provider or when not using the "So-net" option, you have to set the Internet and email preferences. For details on setup, see "Setting network preferences" (p. 34).

Note

You cannot use the network function when using a provider that requires its own exclusive browser software.

Registering with “So-net”

You can complete your online registration with “So-net” using your camcorder. You can also sign up with “So-net” in your DI customer registration step. The “So-net” registration is done by either of the following ways:

- 1 Register for “So-net” in your DI customer registration step
- 2 Register for “So-net” after the DI customer registration is completed

1 Register for “So-net” in your DI customer registration step

- (1) Fill in “So-net” registration form following on-screen directions.
- (2) After completing registration, tap **[END]** in the menu bar.

2 Register for “So-net” after the DI customer registration is completed

- (1) Display the online registration screen following the procedure described in “Online registration with your camcorder” (p. 28).
- (2) Tap [Login link].
- (3) Enter your DI customer ID and password, and log in.
- (4) Tap [So-net sign-up link].
- (5) Input necessary items for registering “So-net” as following message on the screen.

You can search information about access point on the registration web site. For details, see the supplied flyer “Getting Online with your Sony Network Handycam® camcorder.”

Tip

- Be sure to make a note of telephone numbers of access points indicated on the screen on the “Setup Menu” (p. 108).
- To cancel registering with “So-net”, then tap the menu button **[menu]** on the upper-right LCD screen, and tap **[END]** in the menu bar.
For detail on how to display the menu bar, refer to page 84.

Setting network preferences

You have to access the Internet to make your album on the Web, view web pages, or send or receive your email. This section describes how to set network preferences to access the Internet.

Entering your DI customer ID and password

Enter the DI (Digital Imaging) customer ID and password you obtained as a result of your DI customer registration. This setup is required to use the "So-net" option and make your album on the Web.

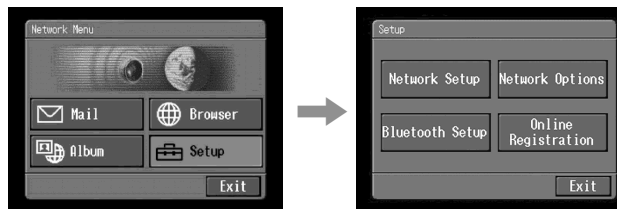
- (1) Open the Network Menu.

For details on how to open the Network Menu, refer to "Accessing the network" in the operating instructions supplied with your camcorder.



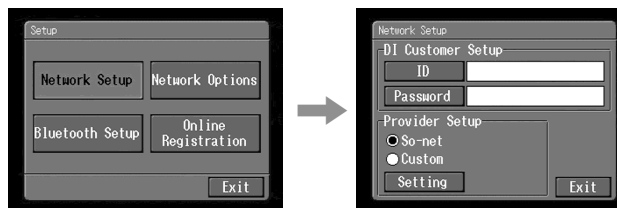
- (2) Tap [Setup].

The Setup screen appears.



- (3) Tap [Network Setup].

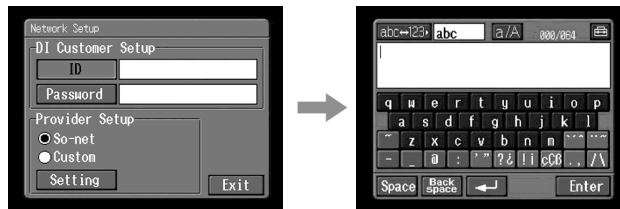
The Network Setup screen appears.



Setting network preferences

- (4) Tap [ID].

The character input screen appears.



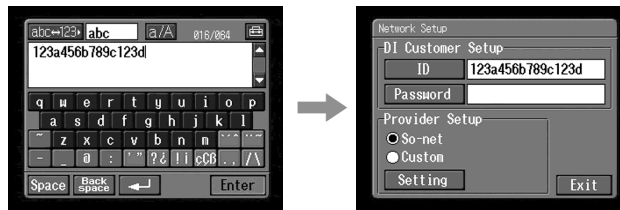
Preparation

- (5) Enter your DI customer ID.

For details on how to input characters, see "How to input characters" (p. 9).

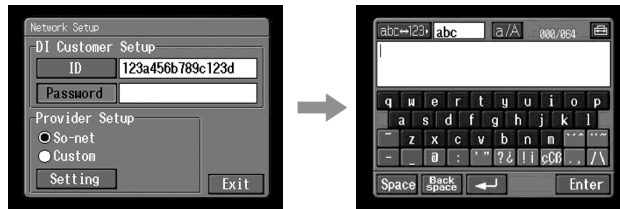
- (6) Tap [Enter].

The Network Setup screen appears again.



- (7) Tap [Password].

The character input screen appears.



- (8) Enter your password.

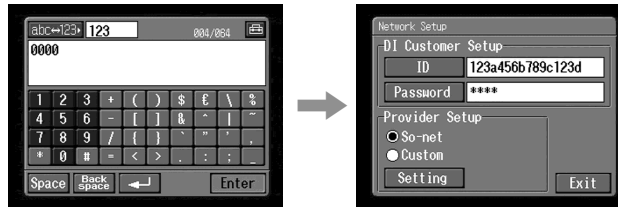
For details on how to input characters, see "How to input characters" (p. 9).

Note

When you check the item "Verify Password" in the Network Options screen, you cannot enter your password. If you try to enter it, the message "Password Already Set Check the Password Profile" appears.

Setting network preferences

- (9) Tap [Enter].
The Network Setup screen appears again.



Tip

While inputting password characters, they are visible as they are. However, after it has been entered, each character is indicated as “*”. If you enter your password again, delete all “*” before entering the password.

- (10) Tap [Exit].
The setup of the DI customer ID and password are complete, and the Setup screen appears again.

Setting your provider preferences

When using “So-net” carry out the following procedures:

- “**1** “So-net” setting”
- “**2** Entering the telephone numbers of your access points”
- “**4** Setting network options preferences”

When using the other provider, carry out the following procedures:

- “**3** Setting your provider preferences manually”
- “**4** Setting network options preferences”

Tip

Even if you do not set up the items described in “**4** Setting network options preferences,” you can access the Internet by using the default setting.

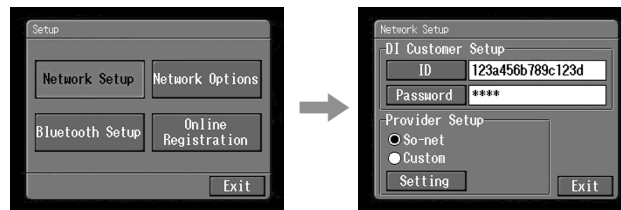
Tip on password

When you check the item “Verify Password” on the Network Options screen, you have to enter your password whenever you connect to your Internet service provider. For details, see “**4** Setting network options preferences”

Setting network preferences

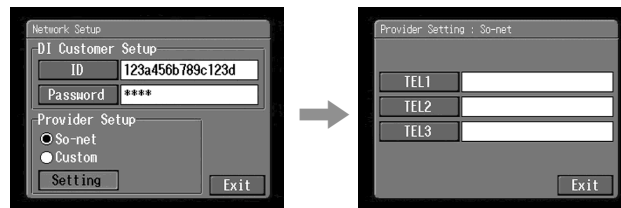
1 "So-net" settings

- (1) Tap [Network Setup].
The Network Setup screen appears.
The default setting is "So-net".



Preparation

- (2) Tap [Setting].
The Provider Setting: So-net screen appears.



Go to "2 Entering the telephone numbers of your access points" on page 38.

Setting network preferences

2 Entering the telephone numbers of your access points

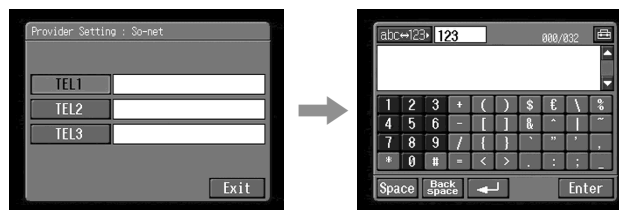
This setup is only for those using "So-net". For more information on the telephone numbers of access points, see the supplied flyer "Getting Online with your Sony Network Handycam® camcorder."

Tip on access points

"So-net" installs access points in various areas. We recommend that you select the most convenient access point which allows you to obtain the lowest telephone charges.

(1) Tap [TEL1].

The character input screen appears.



(2) Enter the telephone number of your access point.

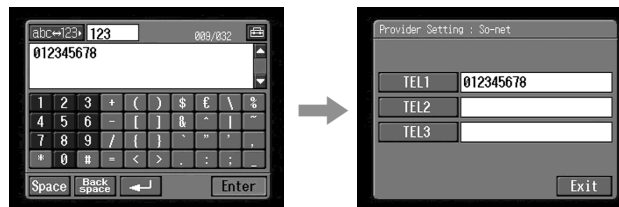
For details on how to input characters, see "How to input characters"(p. 9).

Note

Do not insert hyphens or spaces in the telephone number. (e.g. 0312345678)

(3) Tap [Enter].

The Provider Setting: "So-net" screen appears again.



Tip

You can also register the telephone numbers of access points into [TEL2] and [TEL3]. If necessary, enter the numbers into [TEL2] and [TEL3].

(4) Tap [Exit].

The telephone number registration is complete.

Go to **4** "Setting other preferences" (p. 42).

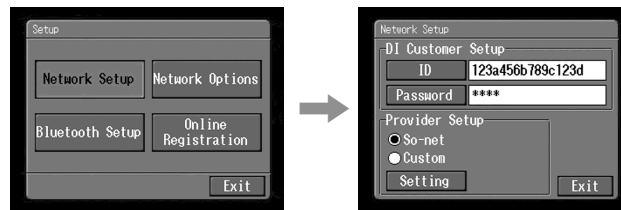
Setting network preferences

3 Setting your provider preferences manually

If you have already made the So-net settings, you do not need to make the following settings.

- (1) Tap [Network Setup].

The Network Setup screen appears.



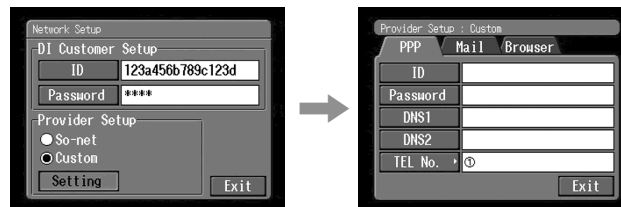
- (2) Tap [Custom].

is checked and changes to .



- (3) Tap [Setting].

The Provider Setup: Custom screen appears.



- (4) Tap [PPP].



Setting network preferences

(5) Set up the following items:

ID: Enter the login name you use for accessing your provider using a dial-up connection. This "ID" is also referred to as a "user ID", "login name", "PPP login name", "network ID", "account name", "logon name", "user name", etc.

Password: Enter the password you use for accessing your provider using a dial-up connection. (Dial-up connection → Glossary (p. 107))
This "Password" is also referred to as a "PPP password", "network password", "connection password", etc.

DNS1: Enter the DNS (Domain Name System) server address of your provider.

- This "DNS1" is also referred to as a "name server", "primary DNS server", "primary name server", etc.
- This entry may be unnecessary, depending on your provider. For details, consult your provider.

DNS2: Enter the secondary DNS server address of your provider, if necessary.

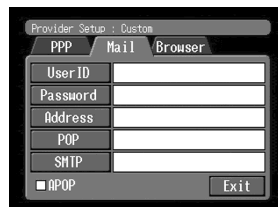
- This "DNS2" is also referred to as a "secondary DNS server", etc.
- This entry may be unnecessary, depending on your provider. For details, consult your provider.

TEL No. ①: Enter the telephone number of your most convenient access point. (Access point → "Glossary" (p. 106))

TEL No. ②/TEL No. ③: Enter the second and third telephone numbers, if necessary.

(6) Tap [Mail].

The Mail preference screen appears.



(7) Set up the following items:

User ID: Enter the user ID name you use for your provider.

Password: Enter the password of your user ID for accessing the POP server.
Your user ID and password are required to use email. This "Password" is also referred to as a "mail password", "mail server password", etc.

Address: Enter your email address. This "Address" is also referred to as a "mail address", "email address", etc.

Setting network preferences

POP Server: Enter the POP (Post Office Protocol) server address of your provider. The POP server is for receiving email. This "POP Server" is also referred to as a "mail server", "POP3 server", etc.

SMTP Server: Enter the SMTP (Simple Mail Transfer Protocol) server address of your provider. The SMTP server is for sending email. This "SMTP Server" is also referred to as a "mail server", "SMTP mail server", etc. The SMTP server may be the same as the POP server, depending on the provider.

APOP: Select whether you want to use APOP. (APOP → "Glossary" (p. 106))

- (8) Tap [Browser].
The Browser screen appears.



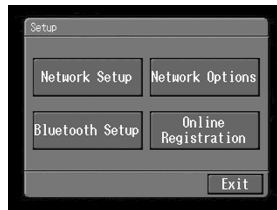
- (9) Set up the following items:
Proxy: Enter the proxy server address of your provider.
Port: Enter the port number of the proxy server of your provider. This entry may be unnecessary, depending on your provider. For details, consult your provider.
- (10) Tap [Exit].
The setup is completed, and the Network Setup screen appears again.
- (11) Tap [Exit].
The Setup screen appears again.

Setting network preferences

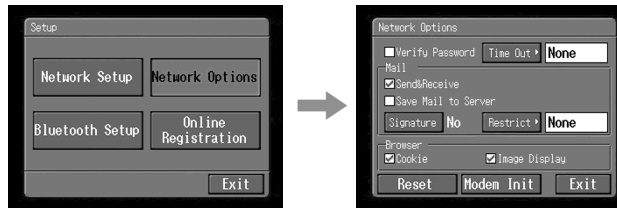
4 Setting other preferences

You can access the Internet with your camcorder using the default settings. It is not necessary to make the following settings. This example is provided to show you how to make changes, if necessary, in the future.

- (1) Display the Setup screen.



- (2) Tap [Network Options].
The Network Options screen appears.



- (3) Set up the following items:

Verify Password: Select whether password entry is required when you access your provider. When you check this item, your password on the PPP screen is deleted. You have to enter your DI customer ID and password for accessing your album on the Web, or enter your password for accessing your provider each time you try to make a connection. This can prevent other persons from connecting to your provider using your ID.

Note

When this item is checked:

- You cannot set your DI customer ID password and your password for accessing your provider.
- You cannot use your album on the Web if you set your preferences manually.

Time Out: Select whether the connection is automatically canceled if no communication is made for specific time (1 minute, 2 minutes, 5 minutes, 15 minutes, or 30 minutes).

Note

The telephone line may not be disconnected automatically depending on web pages. In this case, disconnect the telephone line manually (p. 95).

Setting network preferences

Mail

Send&Receive: Select whether to check the email inbox after sending email.

Restrict: Select whether to skip an email message if its file size is more than 50 KB, 200 KB, or 500 KB.

Save Mail to Server: Select whether to keep copies of the messages on the server.

Note

If you try to receive email without checking this item, email messages may not be downloaded and **may be lost from your server**, depending on the type of email you receive. For details, see "Note on "Save Mail to Server"" (p. 44).

Signature: Set up this item when you want to attach your signature to email (p. 67).

Browser

Cookie: Select whether to accept a cookie. When you do not want to send your personal information, do not check this item. This item is checked at the default setting.

Image Display: Select whether to display images on the screen when viewing a web page. This item is checked at the default setting.

Reset: Reset all the items on the Network Options screen except "Signature" and "Modem Init."

Note

A verification message does not appear when you try to reset items.

Modem Init: Set up the character string to be used for modem initialization. If no setup is specified, you do not need to modify this item.

Note

If the setup is wrong, the message "Connection Error No Response From PPP Server" appears when you try to access the Internet and you will not be able to access the Internet.

- (4) Tap [Exit].
The Setup screen appears again.

Setting network preferences

Note on "Save Mail to Server"

When "Save Mail to Server" is not checked, copies of email messages received will not be stored on your server. However, the following error messages described below depend on the type of email messages. See the table below.

Messages ¹⁾	Cause and/or Corrective Actions
Memory Stick Memory Full	You tried to download email when the "Memory Stick" is already full. ²⁾ → Delete the email, and delete unnecessary email messages or image files in the "Memory Stick," then download your email again. → Insert another "Memory Stick" that has sufficient memory, then download your email again.
Mail Over Size Limit	You tried to download email whose size is over the size set in the item "Restrict". ²⁾ → You can download that email using your computer, etc. → Delete the email, and release the checkmark of the item "Restrict", then download that email again.
Attached Invalid File Deleted	You downloaded email that has an attached file whose file name extension is invalid. ³⁾ → The camcorder cannot receive files other than those in the JPEG or MPEG format.
Mail Over Size Limit	You downloaded an email message whose the number of characters of the message is more than 4000. ³⁾ → The camcorder cannot receive an email message that has 4 000 characters or more. ⁴⁾
Memory Stick Directory Error	→ Insert another "Memory Stick" that has sufficient memory, then download your email again.

¹⁾ These error messages are indicated in a message.

²⁾ These email messages are stored on the server even if you did not check the item "Save Mail to Server". You can retrieve that email using your computer, etc.

³⁾ The previously downloaded email is not stored on the server if you did not check the item "Save Mail to Server". You cannot retrieve this email using your computer, etc.

⁴⁾ For email messages that have lots of line break, the number of available characters is less than 4 000.

Making your album on the Web

You can upload still or moving images to your “album on the Web” through the Internet and post the images on your album.
The album on the Web is provided with “ImageStation.”

You can make an image album on the Web as a simplified web page and send an invitation card to invite your friends to your album.

You can also access your album on the Web with your computer. To access your album from your computer, log in to the “ImageStation” web site with your DI customer ID and password.

For more information on “ImageStation”, access the “ImageStation” web site (“<http://www.imagestation.com/us/PC/>”).

Uploading images to your album on the Web

Once you have an album on the Web, you can upload images to the album, and send invitation cards to your friends. This section describes how to upload your images and send invitation cards.

As for moving images, upload images within the file size constraints of “ImageStation.” For details, access the “ImageStation” web site (“<http://www.imagestation.com/us/PC/>”).

Before operation

Store the desired images in a “Memory Stick” and insert it into your camcorder.

1 Selecting an album

First, select an album to use to upload images.

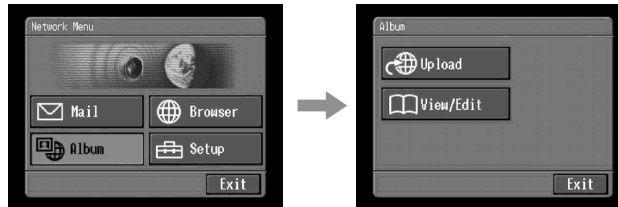
(1) Open the Network Menu.

For details on how to open the Network Menu, refer to “Accessing the network” in the operating instructions supplied with your camcorder.

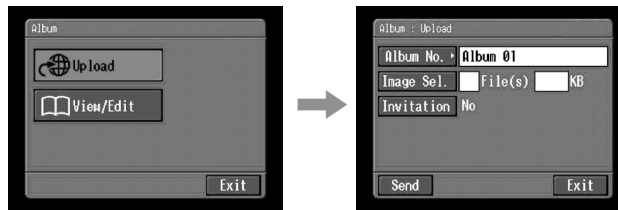


Making your album on the Web

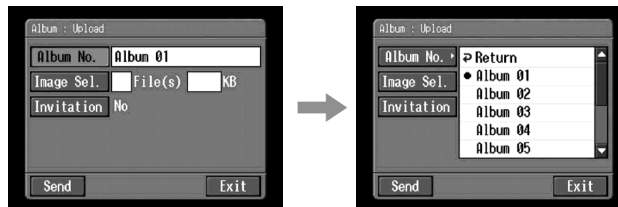
- (2) Tap [Album].
The Album screen appears.



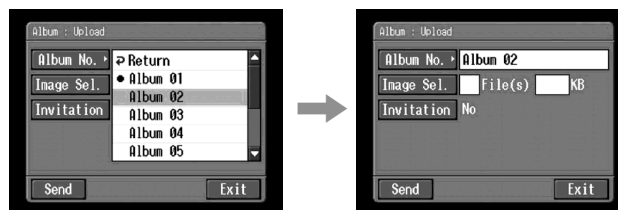
- (3) Tap [Upload].
The Album: Upload screen appears.



- (4) Tap [Album No.].
The album list page appears.



- (5) Tap the desired album.
Selecting the album is complete.



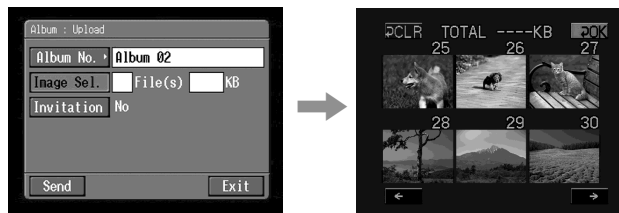
The number of prepared albums
There are 10 albums (Album 01 to 10).

Making your album on the Web

2 Selecting images to upload

Next, select the images to upload.

- (1) Tap [Image Sel.].
The image index list appears.



- (2) Tap the desired images.
Tap the image you want to upload. The selected image is indicated by the checkmark (✓).



To page up or down the image index list

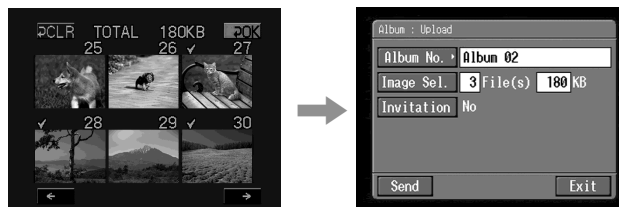
Tap [←] or [→]. The next or previous page that contains six images is displayed.

- (3) Repeat step 2 to select other images.

Notes

- The total number of images you can upload is 99, and the maximum file size you can upload is up to total 3 MB.
- You can upload images to only one album once.

- (4) Tap [↻ OK].
The Album: Upload screen appears again. The total number of selected images and total file size are indicated.



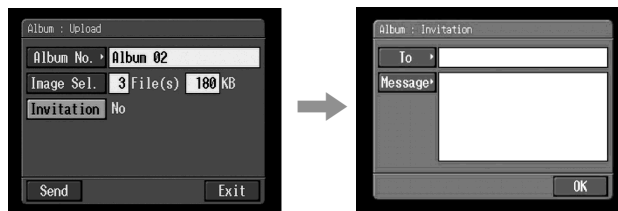
When you only want to upload images, go to “5 Uploading images” on (p. 51).

Making your album on the Web

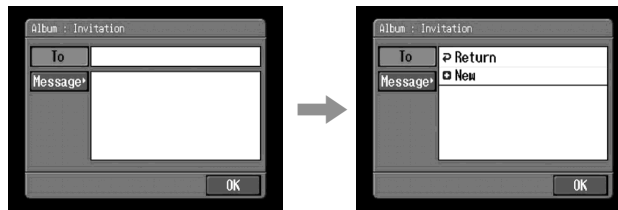
3 Sending an invitation card (email)

Select the addressee to send the invitation card (email) to.

- (1) Tap [Invitation].
The Album: Invitation screen appears.



- (2) Tap [To].
The address list appears. The list shows the destination addresses that are registered in the address book. For details on the address book, see "Using the address book" (p. 69).

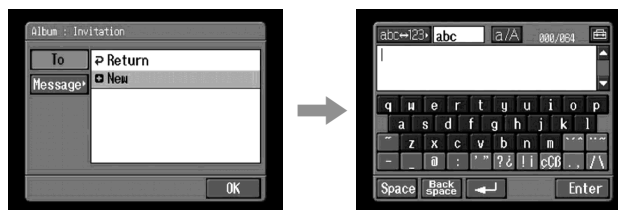


When you have selected the address listed in the address book, go to step 6.

Tips

- The last-used address is listed next to New.
- Addresses are listed in historical order.

- (3) Tap [+ New].
The character input screen appears.

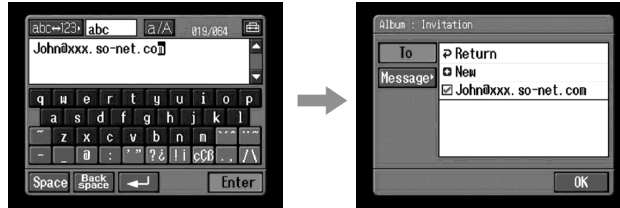


- (4) Enter the email address of the destination address.
For details on how to input characters, see "How to input characters" (p. 9).

Making your album on the Web

- (5) Tap [Enter].

The Album: Invitation screen appears again. The new email address is listed and its check box is indicated by the checkmark (✓).



- (6) If you want to send the invitation card to other addressees, tap other email addresses.

The check box of the selected email address is indicated by the checkmark (✓).

- (7) Tap [Return].

The Album: Invitation screen appears again.

Note

If you try to send an invitation card with 50 addresses registered in the address book, the last-used address will be deleted. The message "Address Book Full Overwrite the Data with Current Address?" appears for verification. To overwrite it, tap [OK]. Otherwise you tap [Cancel], and delete the unnecessary address from the address book, then enter a new address.

Making your album on the Web

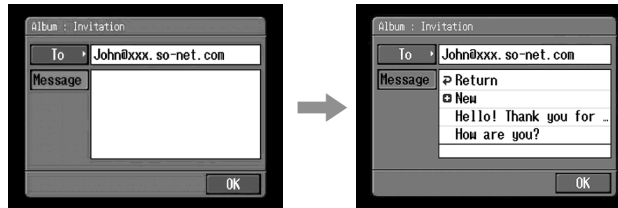
4 Entering the text of a message

Enter the text of the message. You can select the text from the message list, or edit it to suit your purposes. The list shows up to six messages.

Selecting a lately used message

Tap [Message].

The message list appears.



The list shows messages that were written previously. Tap the message to select it from the list.

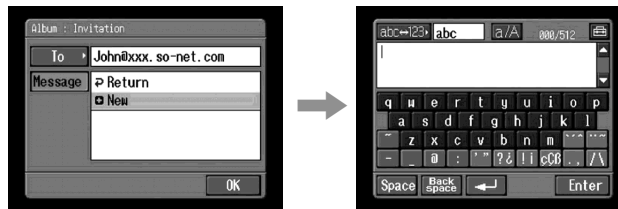
If you want to edit text, tap [Edit]. The character input screen appears. Go to step 3.

When desired text is selected, tap [OK]. After you select the message, go to “5 Uploading images” (p. 51).

Writing a new message

(1) Tap [+ New].

The character input screen appears.



(2) Enter your text.

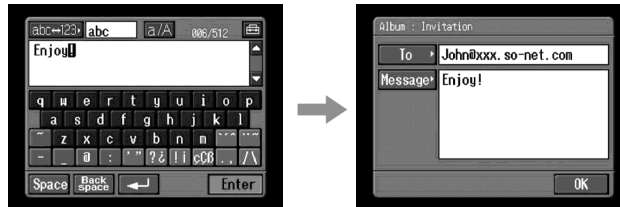
For details on how to input characters, see “How to input characters” (p. 9).

Note

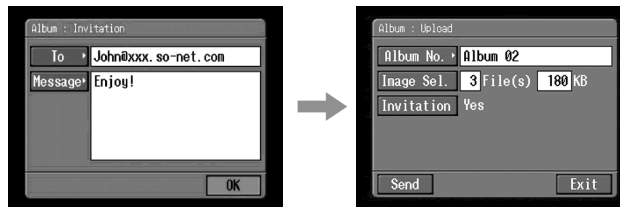
The maximum number of characters you can enter is 512.

Making your album on the Web

- (3) Tap [Enter].
The Album: Invitation screen appears again.

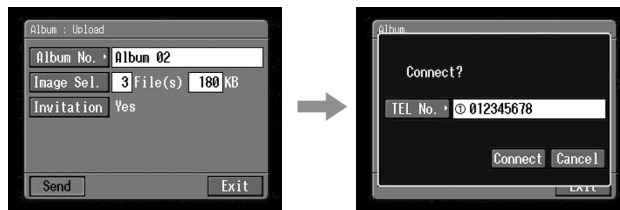


- (4) Tap [OK].
The Album: Upload screen appears again.
"Yes" is indicated next to [Invitation].



5 Uploading images

- (1) Tap [Send].
The screen for verifying the connection appears.
Set your Bluetooth device to connection standby with your camcorder beforehand. For details, refer to the operating instructions supplied with your Bluetooth device.



- (2) Check the telephone number.
When dialing other telephone numbers
Tap [TEL No.]. The registered telephone number list appears. Tap the desired telephone number to select it.

Making your album on the Web

- (3) Tap [Connect].
Your camcorder starts dialing the selected telephone number. After the uploading is completed, the message "Upload Complete" appears.



- (4) Tap [OK].
The Album: Upload screen appears again.

To cancel uploading

During uploading, tap [Cancel].

To send only an invitation card (email)

You can send an invitation card without uploading images. Carry out the following procedures:

- "1 Selecting an album" (p. 45)
- "3 Sending an invitation card" (email) (p. 48)
- "4 Entering the text of a message" (p. 50)
- "5 Uploading images" (p. 51)

After the invitation card has been sent, the message "Invitation Mail Complete" appears.

Viewing or editing your album on the Web

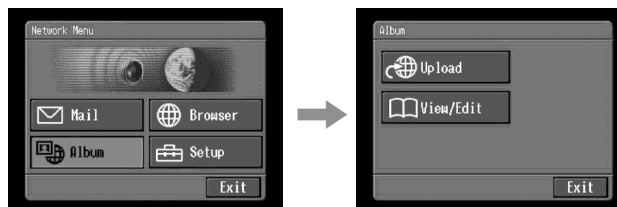
You can view or download images from your album on the Web.

1 Viewing images

- (1) Open the Network Menu.
For details on how to open the Network Menu, refer to "Accessing the network" in the operating instructions supplied with your camcorder.



- (2) Tap [Album].
The Album screen appears.

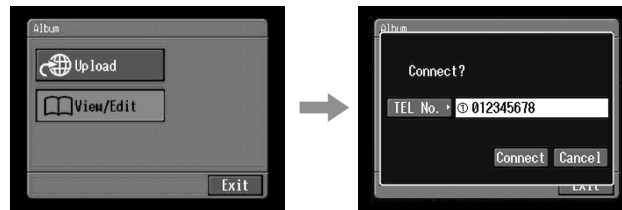


Making your album on the Web

- (3) Tap [View/Edit].

The screen for verifying the connection appears.

Set your Bluetooth device to connection standby with your camcorder beforehand. For details, refer to the operating instructions supplied with your Bluetooth device.



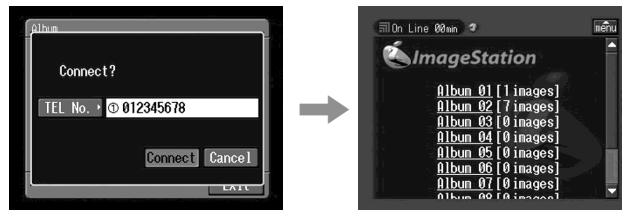
- (4) Check the telephone number.

When dialing other telephone numbers

Tap [TEL No.]. The registered telephone number list appears. Tap the desired telephone number. The selected telephone number is specified.

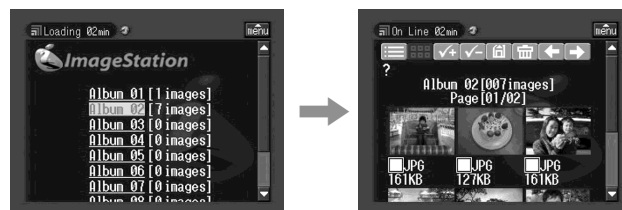
- (5) Tap [Connect].

Your camcorder starts dialing the selected telephone number. After the connection is completed, the album list page appears.



- (6) Tap the album number that you want to view or edit.

The index page appears.



To see a description of each function button

Tap [?].

- (7) Tap the desired image.

The image is enlarged to fill the screen.

Tips

- When you want to end viewing or editing images in your album on the Web, tap [menu] on the upper-right LCD screen, then tap [END].
- The actual screen may differ.

Making your album on the Web

2 Downloading images from the album

Before operation

- Insert a "Memory Stick" into your camcorder, for storing images.
- Release the lock of the "Memory Stick."

(1) Select the images you want to download.

You can select the images in the following two ways:

Selecting images from the index page:

You can select several images and download them at one time. For details, see "To select images from the index page" (p. 55).

Selecting an image displayed on the single-image page:

You can select the image displayed on the single-image page and download it. For details, see "To select an image displayed on the single-image page" (p. 56).

(2) Check the number of images and the total file size.

When you selected a single image



When you selected several images

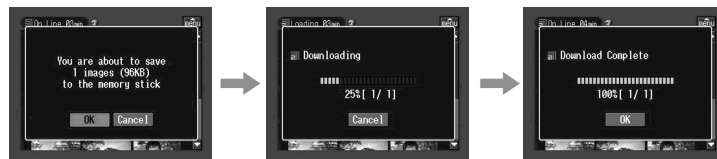


To cancel downloading the images

Tap [Cancel].

(3) Tap [OK].

The message "Downloading" appears. After the downloading is completed, the message "Download Complete" appears.



(4) Tap [OK].

The index page or single-image page appears.

To cancel downloading

During downloading, tap [Cancel].

Making your album on the Web

To view a downloaded image

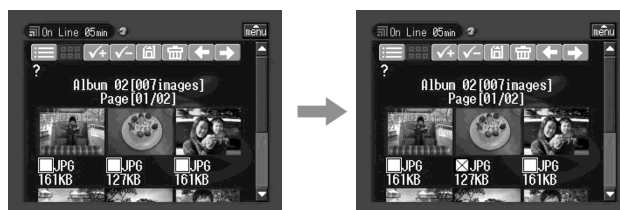
Exit the NETWORK mode, then view the image following the same procedure as that for viewing an image recorded on a "Memory Stick." In such cases, the file name displayed on your camcorder is indicated in the following order: 700-0001, 700-0002, 700-0003 ...

Notes

- Do not eject the "Memory Stick" during downloading.
- After completing downloading, the check mark(s) remains on selected images.
- You can download JPG and MPG files.
- When you download images modified with your computer or images recorded with other devices, your camcorder may not be able to play back the images properly.

To select images from the index page

- (1) Tap the check box of the desired image.
The check box is indicated by the checkmark (☑).



- (2) When you select other images, repeat step 1.

- (3) Tap .

The screen for verification appears.

Set your Bluetooth device to connection standby with your camcorder beforehand. For details, refer to the operating instructions supplied with your Bluetooth device.



To select all the images

Tap .

To cancel selecting images

Tap the check box of the image again.

Making your album on the Web

To cancel all the selected images

Tap .

To return to the album list page



Tap .

To select an image displayed on the single-image page

You can select an image displayed on the full-screen and download it.

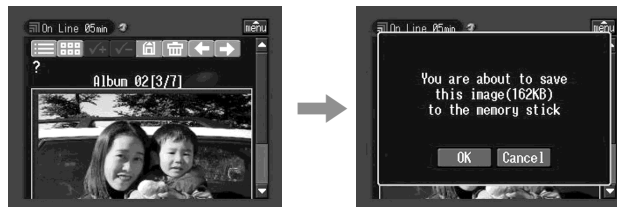
- (1) When the index page is displayed, tap the image to be enlarged.
The image is indicated on the single-image page.



- (2) When you want to view other image, tap  or .

- (3) Tap .

The screen for verification appears.



To return to the index page

Tap .

To return to the album list page


Tap .

Making your album on the Web

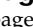
Deleting images from your album

You can delete images from your album.

To delete images displayed on the index page

You can select several images and delete them at one time. Tap  in step 3 in "To select images from the index page" (p. 55). The screen for verification appears. Tap [OK]. The index page appears again.

To delete an image displayed on the single-image page

Tap  in step 3 in "To select an image displayed on the single-image page" (p. 56). The screen for verification appears. Tap [OK]. The next image is displayed.

If the album is empty

The message "There is no pictures in this album." appears.




Return to the Album list page

Tap .

Finishing viewing or editing the album

To finish viewing or editing the album, and disconnect the phone line


(1) When the menu bar is not displayed, tap  on the upper-right LCD screen. The menu bar appears.



(2) Tap  (End).

The album is closed, then the line is disconnected.

To only disconnect the phone line

Tap  (Line Close). Only the phone line is disconnected.

Tip

When you only disconnect the phone line, you can continue to view the album displayed on the screen. If you try to download an image, delete an image, or view another album, verification appears on the screen.