

Information Alarm Clock

Important Information Guide

Owner's Record

The model and serial numbers are located on the bottom. Record the serial number in the space provided below. Refer to these numbers whenever you call your Sony dealer regarding this product.

Model No. HID- _____
Serial No. _____
Model No. AC- _____
Serial No. _____

HID-B7

Notice

© 2011 Sony Corporation. Reproduction in whole or in part without written permission is prohibited. All rights reserved. This guide and the software described herein, in whole or in part, may not be reproduced, translated, or reduced to any machine-readable form without prior written approval.



This product is Wi-Fi Certified and complies with the interoperability specifications established by the Wi-Fi Alliance®.

For Your Convenience

Please contact Sony directly if you:

- Have questions on the use of your unit after reading the Quick Start Guide and Important Information Guide.
- Experience difficulty operating your unit.

Contact Sony Customer Support at:

<http://www.sony.com/dashsupport>

or call Sony at the following number:

For customers in the U.S.A.: 1-866-918-2485

Sony will work to resolve your questions more quickly than your retailer or place of purchase.

Please Do Not Return the Product to the Store

Register your dash™ device at <http://www.sony.com/mydash>

WARNING

To reduce fire or shock hazard, do not expose the unit to rain or moisture.

CAUTION

You are cautioned that any changes or modifications not expressly approved in this guide could void your authority to operate equipment.

NOTIFICATION

This equipment has been tested and found to comply with the limits for a Class B digital device, pursuant to Part 15 of the FCC Rules. These limits are designed to provide reasonable protection against harmful interference in a residential installation. This equipment generates, uses and can radiate radio frequency energy and, if not installed and used in accordance with the instructions, may cause harmful interference to radio communications.

However, there is no guarantee that interference will not occur in a particular installation. If this equipment does cause harmful interference to radio or television reception, which can be determined by turning the equipment off and on, the user is encouraged to try to correct the interference by one or more of the following measures:

- Reorient or relocate the receiving antenna.
- Increase the separation between the equipment and receiver.
- Connect the equipment into an outlet on a circuit different from that to which the receiver is connected.
- Consult the dealer or an experienced radio/TV technician for help.

IMPORTANT SAFETY INSTRUCTIONS

SAVE THESE INSTRUCTIONS.

DANGER –

TO REDUCE THE RISK OF FIRE OR ELECTRIC SHOCK, CAREFULLY FOLLOW THESE INSTRUCTIONS.

If the shape of the plug does not fit the power outlet, use an attachment plug adaptor of the proper configuration for the power outlet.

THIS DEVICE COMPLIES WITH PART 15 OF THE FCC RULES.

OPERATION IS SUBJECT TO THE FOLLOWING TWO CONDITIONS:
(1) THIS DEVICE MAY NOT CAUSE HARMFUL INTERFERENCE, AND
(2) THIS DEVICE MUST ACCEPT ANY INTERFERENCE RECEIVED, INCLUDING INTERFERENCE THAT MAY CAUSE UNDESIRABLE OPERATION.

IMPORTANT NOTE

To comply with FCC RF exposure requirements, the following antenna installation and device operating configurations must be satisfied: the antenna has been installed by the manufacturer and no change can be made. This device and its antenna(s) must not be co-located or operating in conjunction with any other antenna or transmitter.

The available scientific evidence does not show that any health problems are associated with using low power wireless devices. There is no proof, however, that these low power wireless devices are absolutely safe. Low power Wireless devices emit low levels of radio frequency energy (RF) in the microwave range while being used. Whereas high levels of RF can produce health effects (by heating tissue), exposure to low-level RF that does not produce heating effects causes no known adverse health effects. Many studies of low-level RF exposures have not found any biological effects. Some studies have suggested that some biological effects might occur, but such findings have not been confirmed by additional research. This device (HID-B7) has been tested and found to comply with FCC radiation exposure limits set forth for an uncontrolled equipment and meets the FCC radio frequency (RF) Exposure Guidelines in Supplement C to OET65.

Precautions

- Connect the AC adaptor to an easily accessible wall outlet close by. If trouble occurs while using the adaptor, immediately shut off the power by disconnecting the plug from the wall outlet.
- Do not use the AC Adaptor placed in a narrow space, such as between a wall and furniture.
- To disconnect the AC power adaptor cord (mains lead), pull it out by the plug, not the cord.
- Do not leave the unit in a location near a heat source such as a radiator or air duct, or in a place subject to direct sunlight, excessive dust, mechanical vibration, or shock.
- Allow adequate air circulation to prevent internal heat build up. Do not place the unit on a surface (a rug, a blanket, etc.) or near materials (a curtain) which might block the ventilation holes.
- Should any solid object or liquid fall into the unit, unplug the unit and have it checked by qualified personnel before operating it any further.
- To clean the casing, use a soft cloth dampened with a mild detergent solution. When cleaning, unplug the unit.

If you have any questions or problems concerning your unit, please contact Sony customer support.

Notes on LCD screen

- The displayed image on the screen is not identical in picture quality and colors with the printed image because phosphor methods or profiles differ. Please regard the displayed image as just a reference.
- Do not press against the LCD screen with excessive force. The screen may be discolored and that may cause a malfunction.
- Exposing the LCD screen to direct sunlight for long periods may cause malfunction.
- The LCD screen is manufactured using extremely high-precision technology, so over 99.99% of the pixels are operational for effective use. However, there may be some tiny black points and/or bright points (white, red, blue or green in color) that constantly appear on the LCD screen. These points are normal in the manufacturing process and do not affect the operation in any way.
- Images may trail across on the LCD screen in a cold location. This is not a malfunction.

Additional Information

Wireless Network

If unable to establish a reliable connection to the wireless router, please check the following items.

- The wireless router is on.
- You are connected to the Internet.
- The network settings are correct.
- The device is in a location with a strong wireless signal.
- See <http://www.sony.com/dashsupport> for a complete network troubleshooting guide.

No picture

- Make sure the unit's AC power adaptor cord is connected securely to the DC IN jack.
- Make sure the AC power adaptor cord is connected to the wall socket securely.

No sound/Poor sound

- Good picture, no sound - Check the volume control.
- Disconnect your headphones.
- Quality depends on content provided by the sound content provider as well as your connected bandwidth.
- Check the file you are playing is a supported audio format.
- The dash unit may not be compatible with headphones with a microphone.

General

- In the event of a power failure the alarm functions will not work until the power is restored.
- The unit will not play music files that contain copy protection.

Specifications

Main unit

LCD screen

LCD panel: 18 cm/7 inches
800 × 480 resolution

LCD backlight life

20,000 hours

Input/Output connector

USB (USB2.0 Mass Storage class)
Headphone (3.5 mm Stereo mini jack)

Audio Output power

Mono Speaker 1.6 W

Power requirements

DC IN jack, 12 V

Power consumption

5.7 W (normal operation)

Operating temperature

5 °C to 35 °C (41 °F to 95 °F)

Dimensions (width/height/depth)

Approx. 190.4 mm × 129.8 mm × 72 mm
(7 1/2 × 5 1/8 × 2 7/8 inches)

Mass

Approx. 0.51 kg (1 lb 2 oz) without AC adaptor

Supported Photo formats

JPEG	Baseline JPEG with 4:4:4, 4:2:2, or 4:2:0 format
------	--

Supported Audio formats

MPEG-Layer III (MP3)*	Stereo/Mono (2.0 audio profile) Available sample rates: 32/44.1/48 KHz Available bit rates: 32/40/48/56/64/80/96/112/128/160/192/224/ 256/320 kbit/s
-----------------------	---

* MPEG Layer-3 audio coding technology and patents licensed from Fraunhofer IIS and Thompson.

* ID3 tag support for only ISO-8859-1.

Wireless Specifications

Compliance	IEEE 802.11 b/g/n
Frequency Range	2400~2483.5 MHz
Data Rates	IEEE 802.11b: 1/2/5.5/11 Mbps IEEE 802.11g: 6/9/12/18/24/36/48/54 Mbps IEEE 802.11n: Up to 150 Mbps

AC adaptor

Power requirements

~100 V to 240 V, 50 Hz/60 Hz 0.4 A

Rated output voltage

12 V 1.5 A

Dimensions

Approx. 63.9 mm × 49.5 mm × 29.5 mm
(2 5/8 × 2 × 1 3/16 inches)

Mass

Approx. 110 g (3 7/8 oz)

See the label of AC adaptor for more details.

Design and specifications are subject to change without notice.

Notices and Licenses for Excluded Software Used in this Device

Third party software is used in this device. Such third party software may change over time. Please visit <http://www.sony.net/Products/Linux/> for (i) an up-to-date list of the third party software included in each version of the device; (ii) the license terms applicable thereto; and (iii) where required, the source code associated therewith and available for download.

This product contains software that is subject to the following GNU General Public License (hereinafter referred to as "GPL") or GNU Lesser General Public License (hereinafter referred to as "LGPL"). These establish that customers have the right to acquire, modify, and redistribute the source code of said software in accordance with the terms of the GPL or LGPL supplied. The source code for the above-listed software is available on the Web. To download, please access the following URL then select the model name "dash."

URL: <http://www.sony.net/Products/Linux/>

Please note that Sony cannot answer or respond to any inquiries regarding the content of the source code.

Information Alarm Clock

Important Information Guide

Owner's Record

The model and serial numbers are located on the bottom. Record the serial number in the space provided below. Refer to these numbers whenever you call your Sony dealer regarding this product.

Model No. HID- _____
 Serial No. _____
 Model No. AC- _____
 Serial No. _____

HID-B70

Notice

© 2011 Sony Corporation. Reproduction in whole or in part without written permission is prohibited. All rights reserved. This guide and the software described herein, in whole or in part, may not be reproduced, translated, or reduced to any machine-readable form without prior written approval.



This product is Wi-Fi Certified and complies with the interoperability specifications established by the Wi-Fi Alliance®.

For Your Convenience

Please contact Sony directly if you:

- Have questions on the use of your unit after reading the Quick Start Guide and Important Information Guide.
- Experience difficulty operating your unit.

Contact Sony Customer Support at:

<http://www.sony.com/dashsupport>

or call Sony at the following number:

For customers in the U.S.A.: 1-866-918-2485

Sony will work to resolve your questions more quickly than your retailer or place of purchase.

Please Do Not Return the Product to the Store

Register your dash™ device at <http://www.sony.com/mydash>

WARNING

To reduce fire or shock hazard, do not expose the unit to rain or moisture.

CAUTION

You are cautioned that any changes or modifications not expressly approved in this guide could void your authority to operate equipment.

NOTIFICATION

This equipment has been tested and found to comply with the limits for a Class B digital device, pursuant to Part 15 of the FCC Rules. These limits are designed to provide reasonable protection against harmful interference in a residential installation. This equipment generates, uses and can radiate radio frequency energy and, if not installed and used in accordance with the instructions, may cause harmful interference to radio communications.

However, there is no guarantee that interference will not occur in a particular installation. If this equipment does cause harmful interference to radio or television reception, which can be determined by turning the equipment off and on, the user is encouraged to try to correct the interference by one or more of the following measures:

- Reorient or relocate the receiving antenna.
- Increase the separation between the equipment and receiver.
- Connect the equipment into an outlet on a circuit different from that to which the receiver is connected.
- Consult the dealer or an experienced radio/TV technician for help.

Do not expose the batteries to excessive heat such as sunshine, fire or the like.

IMPORTANT SAFETY INSTRUCTIONS SAVE THESE INSTRUCTIONS.

DANGER – TO REDUCE THE RISK OF FIRE OR ELECTRIC SHOCK, CAREFULLY FOLLOW THESE INSTRUCTIONS.

If the shape of the plug does not fit the power outlet, use an attachment plug adaptor of the proper configuration for the power outlet.

CAUTION

Replace the battery with the specified type only. Otherwise, fire or injury may result.

Dipose of used batteries according to the instructions.

THIS DEVICE COMPLIES WITH PART 15 OF THE FCC RULES.

OPERATION IS SUBJECT TO THE FOLLOWING TWO CONDITIONS:

- (1) THIS DEVICE MAY NOT CAUSE HARMFUL INTERFERENCE, AND
 (2) THIS DEVICE MUST ACCEPT ANY INTERFERENCE RECEIVED, INCLUDING INTERFERENCE THAT MAY CAUSE UNDESIRE OPERATION.

IMPORTANT NOTE

To comply with FCC RF exposure requirements, the following antenna installation and device operating configurations must be satisfied: the antenna has been installed by the manufacturer and no change can be made.

This device and its antenna(s) must not be co-located or operating in conjunction with any other antenna or transmitter.

The available scientific evidence does not show that any health problems are associated with using low power wireless devices. There is no proof, however, that these low power wireless devices are absolutely safe. Low power Wireless devices emit low levels of radio frequency energy (RF) in the microwave range while being used. Whereas high levels of RF can produce health effects (by heating tissue), exposure to low-level RF that does not produce heating effects causes no known adverse health effects. Many studies of low-level RF exposures have not found any biological effects. Some studies have suggested that some biological effects might occur, but such findings have not been confirmed by additional research. This device (HID-B70) has been tested and found to comply with FCC radiation exposure limits set forth for an uncontrolled equipment and meets the FCC radio frequency (RF) Exposure Guidelines in Supplement C to OET65.

Precautions

- Connect the AC adaptor to an easily accessible wall outlet close by. If trouble occurs while using the adaptor, immediately shut off the power by disconnecting the plug from the wall outlet.
- Do not use the AC Adaptor placed in a narrow space, such as between a wall and furniture.
- To disconnect the AC power adaptor cord (mains lead), pull it out by the plug, not the cord.
- Do not leave the unit in a location near a heat source such as a radiator or air duct, or in a place subject to direct sunlight, excessive dust, mechanical vibration, or shock.
- Allow adequate air circulation to prevent internal heat build up. Do not place the unit on a surface (a rug, a blanket, etc.) or near materials (a curtain) which might block the ventilation holes.
- Should any solid object or liquid fall into the unit, unplug the unit and have it checked by qualified personnel before operating it any further.

- To clean the casing, use a soft cloth dampened with a mild detergent solution. When cleaning, unplug the unit.
- If you have any questions or problems concerning your unit, please contact Sony customer support.

Notes on LCD screen

- The displayed image on the screen is not identical in picture quality and colors with the printed image because phosphor methods or profiles differ. Please regard the displayed image as just a reference.
- Do not press against the LCD screen with excessive force. The screen may be discolored and that may cause a malfunction.
- Exposing the LCD screen to direct sunlight for long periods may cause malfunction.
- The LCD screen is manufactured using extremely high-precision technology, so over 99.99% of the pixels are operational for effective use. However, there may be some tiny black points and/or bright points (white, red, blue or green in color) that constantly appear on the LCD screen. These points are normal in the manufacturing process and do not affect the operation in any way.
- Images may trail across on the LCD screen in a cold location. This is not a malfunction.

Additional Information

Wireless Network

If unable to establish a reliable connection to the wireless router, please check the following items.

- The wireless router is on.
- You are connected to the Internet.
- The network settings are correct.
- The device is in a location with a strong wireless signal.
- See <http://www.sony.com/dashsupport> for a complete network troubleshooting guide.

No picture

- Make sure the unit's AC power adaptor cord is connected securely to the DC IN jack.
- Make sure the AC power adaptor cord is connected to the wall socket securely.

No sound/Poor sound

- Good picture, no sound - Check the volume control.
- Disconnect your headphones.
- Quality depends on content provided by the sound content provider as well as your connected bandwidth.
- Check the file you are playing is a supported audio format.
- The dash unit may not be compatible with headphones with a microphone.

General

- In the event of a power failure the alarm functions will not work if the battery is not charged.
- The unit will not play music files that contain copy protection.

Specifications

Main unit

LCD screen

LCD panel: 18 cm/7 inches
800 × 480 resolution

LCD backlight life

20,000 hours

Input/Output connector

USB (USB2.0 Mass Storage class)
Headphone (3.5 mm Stereo mini jack)

Audio Output power

Mono Speaker 1.6 W

Power requirements

DC IN jack, 12 V

Power consumption

5.7 W (normal operation)

Operating temperature

5 °C to 35 °C (41 °F to 95 °F)

Dimensions (width/height/depth)

Approx. 190.4 mm × 129.8 mm × 72 mm
(7 1/2 × 5 1/8 × 2 7/8 inches)

Mass

Approx. 0.57 kg (1 lb 4 1/8 oz) without AC adaptor

Supported Photo formats

JPEG	Baseline JPEG with 4:4:4, 4:2:2, or 4:2:0 format
-------------	--

Supported Audio formats

MPEG-Layer III (MP3)*	Stereo/Mono (2.0 audio profile) Available sample rates: 32/44.1/48 KHz Available bit rates: 32/40/48/56/64/80/96/112/128/160/192/224/ 256/320 kbit/s
------------------------------	---

* MPEG Layer-3 audio coding technology and patents licensed from Fraunhofer IIS and Thompson.

* ID3 tag support for only ISO-8859-1.

Wireless Specifications

Compliance	IEEE 802.11 b/g/n
Frequency Range	2400~2483.5 MHz
Data Rates	IEEE 802.11b: 1/2/5.5/11 Mbps IEEE 802.11g: 6/9/12/18/24/36/48/54 Mbps IEEE 802.11n: Up to 150 Mbps

AC adaptor

Power requirements

~100 V to 240 V, 50 Hz/60 Hz 0.4 A

Rated output voltage

--- 12 V 1.5 A

Dimensions

Approx. 63.9 mm × 49.5 mm × 29.5 mm
(2 5/8 × 2 × 1 3/16 inches)

Mass

Approx. 110 g (3 7/8 oz)

See the label of AC adaptor for more details.

Built-in battery

The unit has a built-in battery.

When you use the unit only with the built-in battery, it runs for about 60 minutes, depending on operating and environmental conditions. Charging a fully discharged battery will take approximately 180 minutes. We recommend that you use the unit with the AC power adapter connected.

Design and specifications are subject to change without notice.

Notices and Licenses for Excluded Software Used in this Device

Third party software is used in this device. Such third party software may change over time. Please visit <http://www.sony.net/Products/Linux/> for (i) an up-to-date list of the third party software included in each version of the device; (ii) the license terms applicable thereto; and (iii) where required, the source code associated therewith and available for download.

This product contains software that is subject to the following GNU General Public License (hereinafter referred to as "GPL") or GNU Lesser General Public License (hereinafter referred to as "LGPL"). These establish that customers have the right to acquire, modify, and redistribute the source code of said software in accordance with the terms of the GPL or LGPL supplied. The source code for the above-listed software is available on the Web. To download, please access the following URL then select the model name "dash."

URL: <http://www.sony.net/Products/Linux/>

Please note that Sony cannot answer or respond to any inquiries regarding the content of the source code.

HOME Screen and Controls

The HOME screen can show an app channel, a clock, the weather, a photo viewer, or a music player depending on the theme you selected.

To Change the Theme

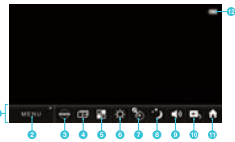
Press the MENU/SNOOZE button at the top of your dash to display the command bar, and tap  and then tap the theme you want to display.

About the Command Bar

Press the MENU/SNOOZE button to bring up the command bar. From the command bar, you can operate or set your dash by tapping a menu item or icon.

Hint

By pressing the MENU/SNOOZE button and tapping the HOME icon in the command bar (if available), you can return to the HOME screen from any other screen.



- 1 Command Bar
- 2 Main MENU
- 3 Bookmark Selector
- 4 Theme Selector
- 5 App Selector
- 6 Display Settings
- 7 Sleep Timer
- 8 Night Mode
- 9 Muting On/Off
- 10 Audio Player
- 11 HOME
- 12 Battery Status (HID-B70 only)

Set Alarms and Clocks

To Set up Alarms

Press the MENU/SNOOZE button to display the command bar, and then tap MENU **Clock & Weather Time/Date**. You can set up two clocks for different time zones.

Alarms

Once the alarm setting screen is displayed, you can set a basic alarm. A basic alarm allows you to set up a repeating alarm. The alarm you set will repeat every day until you turn off that alarm. In the event of a power failure the alarm functions will not work until the power is restored. When you use the HID-B70, the alarm functions will work if there is battery power remaining.

Notes

- The MENU/SNOOZE button acts as a snooze button when an alarm is active.
- If **Helping** is selected on the alarm setting screen, you can set advanced alarms.

To Set up Clocks

Press the MENU/SNOOZE button to display the command bar, and then tap MENU **Clock & Weather Time/Date**. You can set up two clocks for different time zones.



Add Apps and Edit Channels

What are Apps?

Apps are mini-applications that run on your dash. By adding new apps, you can customize your dash.

What is a Channel?

A channel is a customized playlist of apps that you can edit/create. You can select a channel to be displayed on your dash.

Here we explain how to add new apps to your dash and display them.

Step 1: Selecting the Channel to Add Apps to

1 Press the MENU/SNOOZE button to display the command bar.

2 Tap MENU **Themes & Apps Edit Channels**.

3 Tap the channel to which you want to add apps.

4 Tap **Add Apps**.

5 Tap the category you want to add to the channel.

6 Tap **Add**.

7 Tap **Done**.

8 Tap **Done**.

9 Tap **Done**.

10 Tap **Done**.

11 Tap **Done**.

12 Tap **Done**.

13 Tap **Done**.

14 Tap **Done**.

15 Tap **Done**.

16 Tap **Done**.

17 Tap **Done**.

18 Tap **Done**.

19 Tap **Done**.

20 Tap **Done**.

21 Tap **Done**.

22 Tap **Done**.

23 Tap **Done**.

24 Tap **Done**.

25 Tap **Done**.

26 Tap **Done**.

27 Tap **Done**.

28 Tap **Done**.

29 Tap **Done**.

30 Tap **Done**.

31 Tap **Done**.

32 Tap **Done**.

33 Tap **Done**.

34 Tap **Done**.

35 Tap **Done**.

36 Tap **Done**.

37 Tap **Done**.

38 Tap **Done**.

39 Tap **Done**.

40 Tap **Done**.

Step 2: Adding Apps to the Channel

1 Tap **Add Apps**.

2 Tap the category you want to add to the channel.

3 Tap **Add**.

4 Tap **Done**.

5 Tap **Done**.

6 Tap **Done**.

7 Tap **Done**.

8 Tap **Done**.

9 Tap **Done**.

10 Tap **Done**.

11 Tap **Done**.

12 Tap **Done**.

13 Tap **Done**.

14 Tap **Done**.

15 Tap **Done**.

16 Tap **Done**.

17 Tap **Done**.

18 Tap **Done**.

19 Tap **Done**.

20 Tap **Done**.

21 Tap **Done**.

22 Tap **Done**.

23 Tap **Done**.

24 Tap **Done**.

25 Tap **Done**.

26 Tap **Done**.

27 Tap **Done**.

28 Tap **Done**.

29 Tap **Done**.

30 Tap **Done**.

31 Tap **Done**.

32 Tap **Done**.

33 Tap **Done**.

34 Tap **Done**.

35 Tap **Done**.

36 Tap **Done**.

37 Tap **Done**.

38 Tap **Done**.

39 Tap **Done**.

40 Tap **Done**.

Add Apps and Edit Channels (continued)

Step 3: Selecting the Channel to be Displayed

1 Press the MENU/SNOOZE button to display the command bar.

2 Tap MENU **Themes & Apps Change Channels**.

3 Tap the channel you want to display on your dash.

4 Tap **Set**.

5 Tap **Done**.

6 Tap **Done**.

7 Tap **Done**.

8 Tap **Done**.

9 Tap **Done**.

10 Tap **Done**.

11 Tap **Done**.

12 Tap **Done**.

13 Tap **Done**.

14 Tap **Done**.

15 Tap **Done**.

16 Tap **Done**.

17 Tap **Done**.

18 Tap **Done**.

19 Tap **Done**.

20 Tap **Done**.

21 Tap **Done**.

22 Tap **Done**.

23 Tap **Done**.

24 Tap **Done**.

25 Tap **Done**.

26 Tap **Done**.

27 Tap **Done**.

28 Tap **Done**.

29 Tap **Done**.

30 Tap **Done**.

31 Tap **Done**.

32 Tap **Done**.

33 Tap **Done**.

34 Tap **Done**.

35 Tap **Done**.

36 Tap **Done**.

37 Tap **Done**.

38 Tap **Done**.

39 Tap **Done**.

40 Tap **Done**.

Hint

- You can also add apps to a channel by tapping  on the command bar, selecting the channel from the dropdown list on the upper right corner of the screen, and then tapping **Add Apps**.
- To delete apps from a channel, after step 3 of Step 1, Selecting the Channel to Add Apps, tap the app you want to delete, and then tap **Delete**.
- To customize the title or duration of time the app is to be played, after step 3 of Step 2, Selecting the Channel to Add Apps, tap the channel app, and then tap **Customize**.
- To rearrange the order in which apps appear, go to www.sony.com/mydash, and edit the channels from the website.

SONY

Quick Start Guide

dash™

Information Alarm Clock
HID-B70/B7



HID-B70/B7
4-281-189-11(1)

Welcome

Thank you for choosing the dash™ Information Alarm Clock.
Please understand the overview of dash.

Parts and Controls

Initial Setup

Initial Setup (continued)

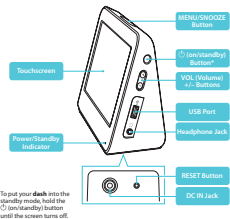
FAQ, Registration, and Support

- Alarm & Weather**
 Simply glance to check time and weather forecast.
- Free App**
 You can download more than 1,000 free Apps and enjoy each function. You need to register your dash to download Apps.
- Music & Photo**
 You can enjoy a variety of internet radio and photo on the internet.
- Personalize**
 You can customize the contents your dash shows and set channel according to your lifestyle.

Checking Supplied Accessories

- dash Information Alarm Clock (HD-B70/B71) (1)
- Card Holder (HD-B70 only) (1)
- AC Power Adaptor (1)
- Quick Start Guide (1)
- Important Information Guide (1)
- Limited Warranty Card (1)
- End User License Agreement (1)

- Notes**
- The dash (HD-B70 only) has a built-in battery that allows you to move it from one room to your home to another without having off the power. The battery power lasts long enough for you to bring it into a power source at all the time.
 - The screen orientation automatically flip when your dash is moved to the horizontal position.
 - Tap the touchscreen with your fingertip to connect.

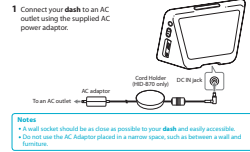


* To put your dash into the standby mode, hold the (ON) standby button until the screen turns off.

To set up your dash, you need a wireless network connected to the internet.

If your access point supports WPS (Wi-Fi Protected Setup), you can set up the wireless network connection using WPS. If the access point does not support WPS, you need to know your access point SSID (network name) and passphrase (security key) to set up the wireless network connection.

- 1 Connect your dash to an AC outlet using the supplied AC power adaptor.



Notes

- A metal object should be as close as possible to your dash and easily accessible.
- Do not use the AC Adaptor placed in a narrow space, such as between a wall and furniture.

- 2 Press the (ON) standby button to turn on your dash.
- 3 Watch the tutorial video played back automatically.
- 4 Follow the instruction on the screen to perform the calibration.
- 5 Select your zone from the cities listed.
- 6 Follow the steps on the screen to connect your dash to your wireless network. If your access point supports WPS, you can use WPS to set up the wireless network connection. If the access point does not support WPS, select your network by its SSID, and enter the required passphrase.

- 7 Set a question that must be answered correctly to prevent your dash settings from being changed by other people.
- 8 Follow the steps on the screen to register your dash.
- 9 Select the theme you want to display from the list.

Hint
Theme determines the background, layout, and features of the HOME screen. You can select a different theme at any time.

Once connected, you may be prompted to undergo a software update. It is recommended that you accept the update. The initial update may take from 10 to 30 minutes, depending on your network connection.

Hint
You can also register your dash from the following website:
<http://www.sony.com/mydash>

Now the setup of your dash is complete.
On the reverse side of this Quick Start Guide, you can see how to use alarms or add apps. For more detailed information or tips on advanced use of your dash, visit the online help guide:
<http://www.sony.com/dashsupport>

- Helpful Hints and Troubleshooting**
- If you are unable to establish a reliable connection to your wireless network, please check the following items.
- Check to make sure the wireless router is ON.
 - Check to make sure the wireless router is connected to the Internet.
 - Check to make sure the network settings are correct.
 - Check to make sure your dash is located near the router so it receives a strong wireless signal.

Screen images are simulated. Product appearance may vary slightly from the images shown. Sony, Personal Space, dash, the dash logo, and the Sony make believe logo are trademarks of Sony Corporation. All other trademarks are trademarks of their respective owners.
©2011 Sony Corporation Printed in China
4-281-387-11(3)

Note on Disposing of your dash
Before disposing of your dash or transferring it to somebody else, make sure to unregister the dash beforehand.
To unregister your dash, press the MENU/SNOOZE button to display the command bar, and tap MENU-System-Device Info, and then tap Unregister on the screen displayed.

Registration and Support
You can also register your device from a computer. To register your device, visit: <http://www.sony.com/mydash> or call Sony at the following number: For customers in the U.S.A., 1-866-918-2485
For further assistance and FAQ, visit: <http://www.sony.com/dashsupport>