

SONY

Wireless Stereo Headset

Quick Start Guide

US

Guide de prise en main

ES

MDR-1RBT

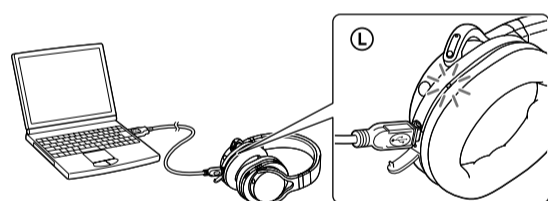


© 2012 Sony Corporation Printed in China
4-xxx-xxx-01(1)



English

Charging the unit



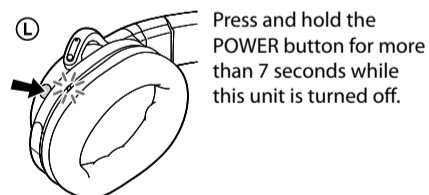
Charging starts when the unit and the computer are connected. Charging is completed in about 6 hours at most and the indicator (red) goes off automatically.

Pairing and connecting with the Bluetooth device

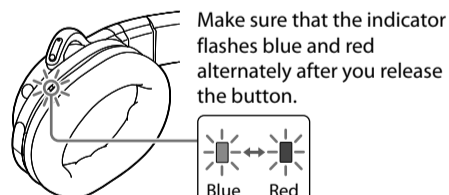
Before pairing, charge this unit.

1 Place the Bluetooth device within 1 meter (3 feet) of this unit.

2 Enter pairing mode on this unit.



Press and hold the POWER button for more than 7 seconds while this unit is turned off.



Make sure that the indicator flashes blue and red alternately after you release the button.

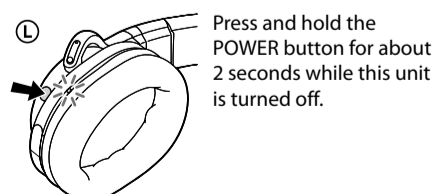
3 Perform the pairing procedure on the Bluetooth device to detect this unit.

When the list of detected devices appears on the display of the Bluetooth device, select "MDR-1RBT." If passkey input is required on the display of a Bluetooth device, input "0000."

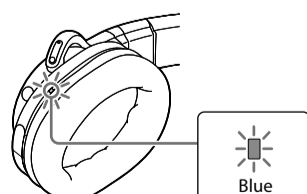
4 Make the Bluetooth connection from the Bluetooth device.

Connecting with the paired device

1 Turn on the unit.



Press and hold the POWER button for about 2 seconds while this unit is turned off.



2 Make the Bluetooth connection from the Bluetooth device.

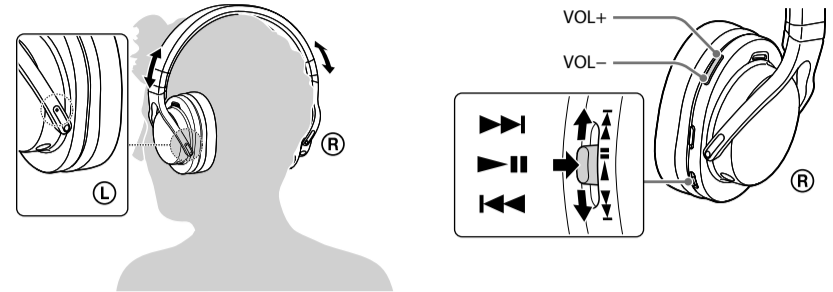
Listening and Calling

Operate the unit after making Bluetooth connection with your Bluetooth device.

Listening to music

Profile: A2DP, AVRCP

Start playback on the Bluetooth device.



Making a call/Receiving a call

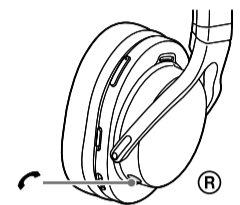
Profile: HSP, HFP

Operate your mobile phone to make a call.

To terminate a call, press the button on the unit.

Press the button on the unit when an incoming call arrives.

Operate in the same way when an incoming call arrives while you are listening to the music.



Connecting by using the NFC function

What is the NFC function?

Profile: A2DP, AVRCP

NFC (Near Field Communication) is a technology enabling short-range wireless communication between various devices, such as mobile phones and IC tags. Thanks to the NFC function, data communication can be achieved easily just by tapping the relevant symbol or designated location on NFC compatible devices.

Using the NFC function, you can pair or connect this unit with smartphones easily.

Compatible smartphones

- Smartphones with the NFC function built-in
- OS: Android 2.3.3 or later

Preparation on the smartphone

An app for the NFC function needs to be installed on the smartphone. Download the app "NFC Easy Connect" from the Google Play, and install it

1 Download and install the app "NFC Easy Connect."

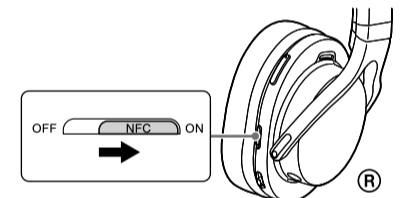
2 Set the smartphone so that the NFC function can be used.

For details, refer to the instructions of the smartphone.

Connecting with the smartphone using the NFC function

Pairing and Bluetooth connection can be done by just tapping the unit with the smartphone.

1 Set the NFC switch to ON on this unit.

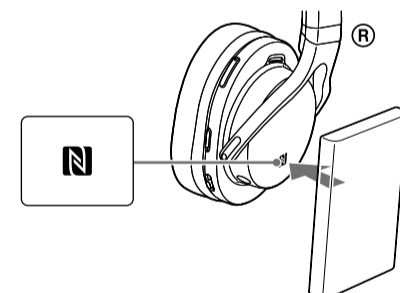


2 Start the app "NFC Easy Connect" on the smartphone.

Make sure that the application screen is displayed.

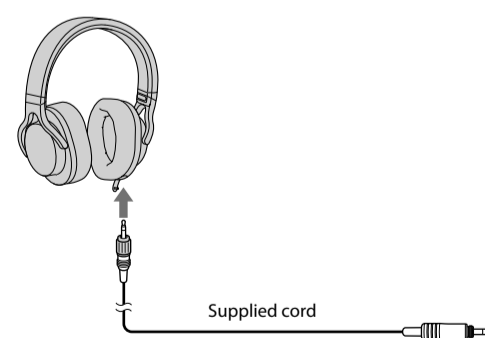
3 Tap this unit with the smartphone.

Tap the smartphone on the N marked part of this unit.



Using the unit by connecting the supplied cord

You can use the unit as ordinary wired headphones by connecting the supplied cord.



The Bluetooth function is disabled.

- The Bluetooth word mark and logos are owned by the Bluetooth SIG, Inc. and any use of such marks by Sony Corporation is under license.
- The N Mark is a trademark or registered trademark of NFC Forum, Inc. in the United States and in other countries.
- Other trademarks and trade names are those of their respective owners.

SONY



Wireless Stereo Headset

| | |
|-----------------|----|
| Reference Guide | US |
| Reference Guide | ES |



MDR-1RB7

©2012 Sony Corporation Printed in China

English

WARNING

To reduce the risk of electrical shock, do not open the cabinet. Refer servicing to qualified personnel only.

Do not install the appliance in a confined space, such as a bookcase or built-in cabinet.

Do not expose the batteries (battery pack or batteries installed) to excessive heat such as sunshine, fire or the like for a long time.

Excessive sound pressure from headphones can cause hearing loss.

Information

If you have any questions about this product, you may call: Sony Customer Information Service Center 1-800-222-7669 or <http://www.sony.com/>

Declaration of Conformity

Trade Name: SONY
 Model No.: MDR-1RB7
 Responsible Party: Sony Electronics Inc.
 Address: 16530 Via Esprillo, San Diego, CA 92127 USA
 Telephone No.: 858-942-2230

This device complies with Part 15 of the FCC Rules. Operation is subject to the following two conditions: (1) this device may not cause harmful interference, and (2) this device must accept any interference received, including interference that may cause undesired operation.

You are cautioned that any changes or modifications not expressly approved in this manual could void your authority to operate this equipment.

This equipment must not be co-located or operated in conjunction with any other antenna or transmitter.

This device complies with Part 15 of the FCC Rules. Operation is subject to the following two conditions: (1) this device may not cause harmful interference, and (2) this device must accept any interference received, including interference that may cause undesired operation.

This equipment complies with FCC radiation exposure limits set forth for an uncontrolled environment and meets the FCC radio frequency (RF) Exposure Guidelines in Supplement C to OET65. This equipment has very low levels of RF energy that are deemed to comply without testing of specific absorption ratio (SAR).

Note

This equipment has been tested and found to comply with the limits for a Class B digital device, pursuant to Part 15 of the FCC Rules. These limits are designed to provide reasonable protection against harmful interference in a residential installation. This equipment generates, uses and can radiate radio frequency energy and, if not installed and used in accordance with the instructions, may cause harmful interference to radio communications. However, there is no guarantee that interference will not occur in a particular installation. If this equipment does cause harmful interference to radio or television reception, which can be determined by turning the equipment off and on, the user is encouraged to try to correct the interference by one or more of the following measures:

- Reorient or relocate the receiving antenna.
- Increase the separation between the equipment and receiver.
- Connect the equipment into an outlet on a circuit different from that to which the receiver is connected.
- Consult the dealer or an experienced radio/TV technician for help.

The Bluetooth word mark and logos are owned by the Bluetooth SIG, Inc. and any use of such marks by Sony Corporation is under license.

The N Mark is a trademark or registered trademark of NFC Forum, Inc. in the United States and in other countries.

Microsoft, Windows and Windows Vista are registered trademarks or trademarks of Microsoft Corporation in the United States and/or other countries.

Macintosh and Mac OS are trademarks of Apple Inc., registered in the U.S. and other countries.

Other trademarks and trade names are those of their respective owners.

For the customers in the USA

RECYCLING LITHIUM-ION BATTERIES

Lithium-Ion batteries are recyclable. You can help preserve our environment by returning your used rechargeable batteries to the collection and recycling location nearest to you. For more information regarding recycling of rechargeable batteries, call toll free 1-800-822-8837, or visit <http://www.rbc.org/>

Caution: Do not handle damaged or leaking Lithium-Ion batteries.



Precautions

On Bluetooth communication

- Bluetooth wireless technology operates within a range of about 10 meters (about 30 feet). Maximum communication range may vary depending on obstacles (human body, metal, wall, etc.) or electromagnetic environment.
- The antenna is built into the unit as illustrated in the dotted line. The sensitivity of the Bluetooth communication will improve by turning the direction of the built-in antenna to the connected Bluetooth device. The communication distance shortens when the obstacles are between the antenna of the connected device and this unit.



- The following conditions may affect the sensitivity of Bluetooth communication.
 - There is an obstacle such as a human body, metal, or wall between this unit and Bluetooth device.
 - A device using 2.4 GHz frequency, such as a wireless LAN device, cordless telephone, or microwave oven, is in use near this unit.
- Because Bluetooth devices and wireless LAN (IEEE802.11b/g) use the same frequency, microwave interference may occur and resulting in communication speed deterioration, noise, or invalid connection if this unit is used near a wireless LAN device. In such a case, perform the following.
 - Use this unit at least 10 m (about 30 ft) away from the wireless LAN device.
 - If this unit is used within 10 m (about 30 ft) of a wireless LAN device, turn off the wireless LAN device.
 - Install this unit and Bluetooth device as near to each other as possible.
- Microwaves emitting from a Bluetooth device may affect the operation of electronic medical devices. Turn off this unit and other Bluetooth devices in the following locations, as it may cause an accident:
 - where inflammable gas is present, in a hospital, train, airplane, or a petrol station
 - near automatic doors or a fire alarm
- This unit supports security capabilities that comply with the Bluetooth standard to provide a secure connection when the Bluetooth wireless technology is used, but security may not be enough depending on the setting. Be careful when communicating using Bluetooth wireless technology.
- We do not take any responsibility for the leakage of information during Bluetooth communication.
- Connection with all Bluetooth devices cannot be guaranteed.
 - A device featuring Bluetooth function is required to conform to the Bluetooth standard specified by Bluetooth SIG, Inc. and be authenticated.
 - Even if the connected device conforms to the above mentioned Bluetooth standard, some devices may not be connected or work correctly, depending on the features or specifications of the device.
 - While talking on the phone hands free, noise may occur, depending on the device or communication environment.
- Depending on the device to be connected, it may require some time to start communication.

Others

- Do not place this unit in a place exposed to humidity, dust, soot or steam, subject to direct sunlight, or in a car waiting at a traffic signal. It may cause a malfunction.
- Using the Bluetooth device may not function on mobile phones, depending on radio wave conditions and location where the equipment is being used.
- If you experience discomfort after using the Bluetooth device, stop using the Bluetooth device immediately. Should any problem persist, consult your nearest Sony dealer.
- Listening with this unit at high volume may affect your hearing. For traffic safety, do not use this unit while driving or cycling.
- Do not put weight or pressure on this unit as it may cause the unit to deform during long storage.
- Do not subject the unit to excessive shock.
- Clean the unit with a soft dry cloth.
- Do not expose the unit to water. The unit is not waterproof. Remember to follow the precautions below.
 - Be careful not to drop the unit into a sink or other container filled with water.
 - Do not use the unit in humid locations or bad weather, such as in the rain or snow.
 - Do not get the unit wet.
 - If you touch the unit with wet hands, or put the unit in a damp article of clothing, the unit may get wet and this may cause a malfunction of the unit.
- The earpads may deteriorate due to longterm storage or use.
- If you have any questions or problems concerning this unit that are not covered in this manual, please consult your nearest Sony dealer.

Specifications

General

Communication System

Bluetooth Specification version 3.0

Output

Bluetooth Specification Power Class 2

Maximum communication range

Line of sight approx. 10 m (30 ft)^{*1}

Frequency band

2.4 GHz band (2.4000 GHz - 2.4835 GHz)

Modulation method

FHSS

Compatible Bluetooth Profiles^{*2}

A2DP (Advanced Audio Distribution Profile)
 AVRCP (Audio Video Remote Control Profile)
 HFP (Hands-free Profile)
 HSP (Headset Profile)

Supported Codec^{*3}

SBC^{*4}, AAC^{*5}

Supported content protection method

SCMS-T

Transmission range (A2DP)

20 Hz - 20,000 Hz (Sampling frequency 44.1 kHz)

Included items

Wireless stereo headset (1)
 Micro USB cable (approx. 50 cm) (1)
 Audio cord (approx. 1.5 m) (1)
 Carrying pouch (1)
 Reference Guide (this sheet) (1)

Recommended accessory

USB Charging AC Power Adaptor: AC-U501AD (sold separately)

^{*1} The actual range will vary depending on factors such as obstacles between devices, magnetic fields around a microwave oven, static electricity, reception sensitivity, antenna's performance, operating system, software application, etc.

^{*2} Bluetooth standard profiles indicate the purpose of Bluetooth communication between devices.

^{*3} Codec: Audio signal compression and conversion format

^{*4} Subband Codec

^{*5} Advanced Audio Coding

Wireless Stereo Headset

Power source

DC 3.6 V: Built-in lithium-ion rechargeable battery

Mass

Approx. xx g (xx oz)

Operating temperature

0 °C to 45 °C (32 °F to 113 °F)

Usage hours

Communication time (including music playback time):
 Approx. 30 hours
 Standby time: Max. 200 hours

Charging time

Approx. 6 hours

Receiver

Type

Closed, Dynamic

Driver units

40 mm

Frequency response

4 Hz - 130 kHz

Microphone

Type

Electret condenser

Direction characteristic

Omni directional

Effective frequency range

xx Hz - xx Hz

System requirements for battery charge using USB

Personal Computer with pre-installed with any of the following operating systems and USB port:

Operating Systems

(when using Windows)

Windows® 7

Home Basic / Home Premium / Professional / Ultimate

Windows Vista® (Service Pack 2 or later)

Home Basic / Home Premium / Business / Ultimate

Windows® XP (Service Pack 3 or later)

Home Edition / Professional / Media Center Edition 2004 /

Media Center Edition 2005

(when using Macintosh)

Mac OS X (version.10.3 or later)

Design and specifications are subject to change without notice.

ADVERTENCIA

Para evitar descargas eléctricas, no abra la unidad. En caso de avería, solicite los servicios de personal cualificado.

No sitúe el aparato en un espacio cerrado, como una estantería o un armario empotrado.

No exponga las pilas (la batería o las pilas instaladas) a fuentes de calor excesivo como luz solar, fuego o similar durante un período prolongado.

Una presión acústica excesiva de los auriculares puede provocar pérdidas auditivas.

Información

Se le advierte de que la realización de cambios o modificaciones no aprobados explícitamente en este manual pueden anular su autoridad para utilizar este equipo.

El equipo no debe colocarse ni utilizarse junto con ninguna otra antena o transmisor.

La marca de la palabra *Bluetooth* y sus logotipos son propiedad de Bluetooth SIG, Inc. y su uso por parte de Sony Corporation se realiza bajo licencia.

Microsoft, Windows y Windows Vista son marcas comerciales registradas o marcas comerciales de Microsoft Corporation en Estados Unidos y en otros países.

Macintosh y Mac OS son marcas comerciales de Apple Inc. registradas en Estados Unidos y otros países.

Las demás marcas y nombres comerciales pertenecen a sus respectivos propietarios.

Para clientes de los EE UU

RECYCLADO DE BATERÍAS DE IONES DE LITIO

Las baterías de iones de litio son reciclables.

Usted podrá ayudar a conservar el medio ambiente devolviendo las baterías usadas al punto de reciclaje más cercano.

Para más información sobre el reciclado de baterías, llame al número gratuito 1-800-822-8837, o visite <http://www.rbrcc.org/>

Precaución: No utilice baterías de iones de litio dañadas o con fugas.



Precauciones

Comunicación *Bluetooth*

- La tecnología inalámbrica *Bluetooth* funciona en un rango de aproximadamente 10 metros. El rango máximo de comunicación puede variar en función de los obstáculos (personas, objetos metálicos, paredes, etc.) o del entorno electromagnético.
- La antena está incorporada en la unidad como se muestra con la línea de puntos. La sensibilidad de la comunicación *Bluetooth* mejorará al girar la antena incorporada en la unidad hacia el dispositivo *Bluetooth* conectado. La distancia de comunicación se reduce cuando existen obstáculos entre la antena del dispositivo conectado y esta unidad.



- Las condiciones siguientes pueden afectar la sensibilidad de la comunicación *Bluetooth*.
 - La existencia de obstáculos como, por ejemplo, una persona, un objeto metálico o una pared entre esta unidad y el dispositivo *Bluetooth*.
 - El uso de dispositivos que utilicen una frecuencia de 2,4 GHz como, por ejemplo, un dispositivo LAN inalámbrico, un teléfono inalámbrico o un microondas cerca de la unidad.
- Como los dispositivos *Bluetooth* y las LAN inalámbricas (IEEE802.11b/g) utilizan la misma frecuencia, pueden producirse interferencias de microondas que provoquen el deterioro de la velocidad de la comunicación, la aparición de ruido o una conexión no válida si la unidad se utiliza cerca de un dispositivo LAN inalámbrico. En este caso, realice el procedimiento siguiente.
 - Utilice esta unidad a una distancia mínima de 10 m del dispositivo LAN inalámbrico.
 - Si utiliza esta unidad a menos de 10 m de un dispositivo LAN inalámbrico, apague el dispositivo LAN inalámbrico.
 - Instale esta unidad y el dispositivo *Bluetooth* a la distancia más corta posible entre sí.
- Las microondas que emite un dispositivo *Bluetooth* pueden afectar el funcionamiento de dispositivos médicos electrónicos. Apague esta unidad y los demás dispositivos *Bluetooth* en los lugares siguientes, ya que podrían provocar un accidente:
 - donde exista gas inflamable, en un hospital, tren, avión o gasolinera
 - cerca de puertas automáticas o alarmas de incendios
- Esta unidad admite capacidades de seguridad que cumplen con el estándar *Bluetooth* para proporcionar una conexión segura al utilizar la tecnología inalámbrica *Bluetooth*, pero es posible que la seguridad no sea suficiente según el ajuste. Tenga cuidado al realizar una comunicación con la tecnología inalámbrica *Bluetooth*.
- No se aceptan responsabilidades por la pérdida de información que pudiera producirse durante una comunicación *Bluetooth*.
- No se puede garantizar la conexión con todos los dispositivos *Bluetooth*.
 - Un dispositivo que disponga de la función *Bluetooth* debe cumplir el estándar *Bluetooth* especificado por Bluetooth SIG, Inc. y estar autenticado.
 - Incluso en el caso de que el dispositivo conectado cumpla el estándar *Bluetooth* mencionado anteriormente, es posible que algunos dispositivos no puedan conectarse o funcionar correctamente, según las características o las especificaciones del dispositivo.
 - Mientras esté hablando con el manos libre del teléfono, es posible que se produzca ruido en función del dispositivo o del entorno de comunicación.
- En función del dispositivo que vaya a conectarse, es posible que transcurra cierto tiempo antes de que se inicie la comunicación.

Otros

- No coloque esta unidad en lugares expuestos a humedad, polvo, hollín, vapor o la luz solar directa, ni la deje en un automóvil en espera ante una señal de tráfico. Se pueden producir fallas de funcionamiento.
- Es posible que el dispositivo *Bluetooth* no funcione en teléfonos celulares dependiendo del estado de las ondas de radio y del lugar donde se utilice el equipo.
- Si no se siente cómodo después de utilizar el dispositivo *Bluetooth*, deje de utilizarlo inmediatamente. Si el problema persiste, consulte con el distribuidor Sony más cercano.
- Si usa la unidad a un volumen alto, puede sufrir daños en los oídos. Por razones de seguridad vial, no la utilice mientras conduce o va en bicicleta.
- No coloque ningún peso ni ejerza presión sobre la unidad, ya que ésta podría deformarse durante períodos de almacenamiento prolongado.
- No someta la unidad a golpes excesivos.
- Limpie la unidad con un paño suave seco.
- No exponga la unidad al agua. La unidad no es impermeable. Recuerde seguir las precauciones siguientes.
 - Tenga cuidado de no dejar caer la unidad en un fregadero u otro recipiente que contenga agua.
 - No utilice la unidad en lugares húmedos o si hace mal tiempo, por ejemplo, si llueve o nieva.
 - No deje que la unidad se moje. Si toca la unidad con las manos mojadas, o la coloca en una prenda de ropa mojada, la unidad se puede mojar y esto puede provocar un funcionamiento incorrecto de la misma.
- Es posible que los adaptadores se deterioren por el uso o por un almacenamiento prolongado.
- Si desea realizar alguna consulta o solucionar algún problema relativo a la unidad que no se trate en este manual, póngase en contacto con el distribuidor Sony más cercano a su domicilio.

Especificaciones

Generales

Sistema de comunicación

Especificación *Bluetooth* versión 3.0

Salida

Clase de potencia 2 de especificación *Bluetooth*

Rango de comunicación máximo

Línea de vista de aprox. 10 m^{*1}

Banda de frecuencia

Banda de 2,4 GHz (2,4000 GHz - 2,4835 GHz)

Método de modulación

FHSS

Perfiles *Bluetooth* compatibles^{*2}

A2DP (Advanced Audio Distribution Profile)
AVRCP (Audio Video Remote Control Profile)
HFP (Hands-free Profile)
HSP (Headset Profile)

Códec compatible^{*3}

SBC^{*4}, AAC^{*5}

Sistema de protección de contenido admitido

SCMS-T

Intervalo de transmisión (A2DP)

20 Hz - 20.000 Hz (frecuencia de muestreo de 44,1 kHz)

Artículos incluidos

Cable USB (1)
xxx (1)
Bolsa de transporte (1)
Manual de instrucciones (este documento) (1)

Accesorio recomendado

Adaptador de alimentación de ca de carga USB:
AC-U501AD (se vende por separado)

^{*1} El rango real variará en función de factores como, por ejemplo, los obstáculos que puedan interponerse entre los dispositivos, los campos magnéticos que puedan existir en torno a hornos microondas, la electricidad estática, la sensibilidad de recepción o el rendimiento de la antena, del sistema operativo, de la aplicación de software, etc.

^{*2} Los perfiles estándar *Bluetooth* indican la finalidad de la comunicación *Bluetooth* entre dispositivos.

^{*3} Códec: formato de conversión y compresión de señales de audio

^{*4} Códec de banda secundaria

^{*5}

Auriculares estéreo inalámbricos

Fuente de alimentación

cc de 3,6 V: batería recargable de iones de litio incorporada

Masa

Aprox. xx g

Temperatura de funcionamiento

De 0 °C a 45 °C

Receptor

Tipo

Cerrado, armadura balanceada

Unidades auriculares

Armadura balanceada

Respuesta de frecuencia

4 Hz - 130 kHz

Micrófono

Tipo

MEMS

Características de dirección

Omnidireccional

Gama de frecuencias efectivas

xx Hz - xx Hz

Requisitos del sistema para realizar la carga de la batería a través de USB

Ordenador con puerto USB y alguno de los siguientes sistemas operativos instalados previamente:

Sistemas operativos

(con Windows)
Windows[®] 7
Home Basic / Home Premium / Professional / Ultimate
Windows Vista[®] (Service Pack 2 o posterior)
Home Basic / Home Premium / Business / Ultimate
Windows[®] XP (Service Pack 3 o posterior)
Home Edition / Professional / Media Center Edition 2004 / Media Center Edition 2005

(con Macintosh)
Mac OS X (versión.10.3 o posterior)

El diseño y las especificaciones están sujetos a cambios sin previo aviso.

Declaration of Conformity

NOT TRANSFERABLE

The company indicated issues this Declaration of Conformity and is solely responsible for the declared compliance.

This compliance is valid ONLY for the equipment identified when used in a manner with the intent of the referenced documents.

Responsible Company: Sony Electronics, Inc.
16530 Via Esprillo
San Diego, CA 92127
Phone: 858-942-2230

Equipment Type & Model: MDR-1RBT

Declared Compliance: This device complies with Part 15 of the FCC Rules. Operation is subject to the following two conditions: (1) this device may not cause harmful interference and (2) this device must accept any interference received, including interference that may cause undesired operation.



08/09/2012

Date

Mark Arthurs, EMC Site Manager
North America Region Product Compliance Dept.
Customer Satisfaction & Quality, Sony Electronics Inc.

Export PDF