

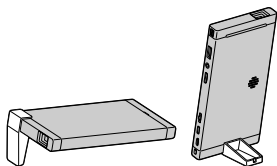
## English

**Caution** - Use of controls or adjustments or performance of procedures other than those specified herein may result in hazardous radiation exposure.

Please read the following instructions carefully before use.

## Checking the supplied items

### ● 2 Way Stand (1)



### ● HDMI to Mini HDMI converter adaptor (1)



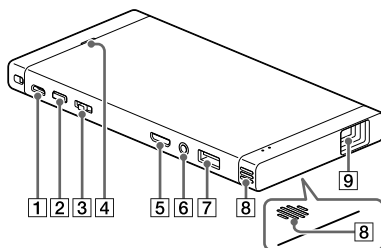
### ● USB cable (1)

### ● Startup Guide (this manual, 1)

## Parts and controls

### CAUTION

Do not point the laser light directly at eyes or people, nor look into it. Doing so may cause serious injuries such as loss of eyesight.



### 1 Micro USB jack (only for charging this product)

### 2 (power) button

### 3 Jog lever (-/ENTER/+)

### 4 Speaker

### 5 Mini HDMI/MHL IN jack

### 6 AUDIO OUT jack

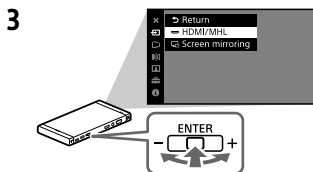
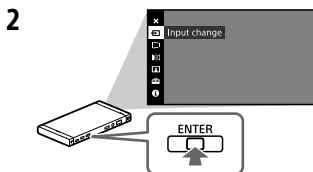
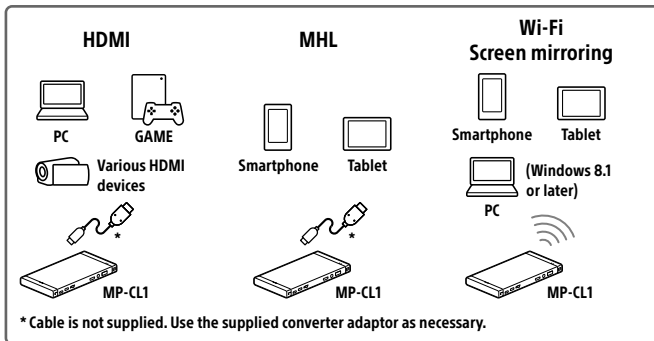
### 7 USB OUT jack (for power supply)

### 8 Ventilation holes

### 9 Lens

Laser radiates from this aperture

## Connecting the device



- **HDMI or MHL:**  
 [ENTER] Input change  
 → [HDMI/MHL]
- **Screen mirroring:**  
 [ENTER] Input change  
 → [Screen mirroring]

### More information

Refer to "Help guide" in the menu for details.

[i information] → [? Help guide]

"Help guide" is also available on the Internet (<http://www.sony.net/SonyInfo/Support/>).

4

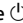

## Troubleshooting

The power does not turn on.

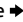
- If the remaining battery power is low or insufficient, charge the battery.
- Use this product in a location with an ambient temperature of between 0 °C and 35 °C.
- Try turning the power off and on again.

This product automatically shuts down during use.

- The battery may be depleted. Charge the battery.
- Check that the sleep timer is not turned on in the [Sleep timer] menu.
- This product automatically shuts down when it overheats. Let it cool down before you operate it again.

The  (power) and  (charge) lamps blink in white and red respectively at the same time.

- An internal error may have occurred. Try turning the power off and on again.

The  (charge) lamp blinks in orange.

- The battery is almost depleted. Charge the battery.

## Specifications

Design and specifications are subject to change without notice.

Dimensions (W/H/L): Approx. 77.0 mm x 149.5 mm x 13.0 mm (3 3/64

inches x 5 57/64 inches x 33/64 inches)

Mass: Approx. 210 g (7.4 oz.)

Operation guarantee temperature: 0 °C to 35 °C (32 °F to 95 °F)

Wi-Fi standards supported (Indoor use only in India): IEEE 802.11 a/b/g/n (2.4 GHz/5 GHz)

Output resolution: 1,920 × 720 p

Audio output:  $\Phi$ 3.5 Audio Jack

Speaker output: 1.0 W

HDMI/MHL input: Mini HDMI (HDMI 1.4b, HDCP1.4/MHL 2.2)

Diagonal projection image size: 40 inches at projection distance of 1.15 m

Brightness: Average: 32 lumens/  
Maximum: 37 lumens (100% White)

Color reproducibility: Full color (16,770,000 colors)

Aspect ratio: 16:9

Contrast ratio: 80,000:1

Continuous projecting time (Full charge): Approx. 120 minutes

Light source/light source life: Laser diode/Approx. 2,000 hours (2 hours of use per day, 4 days every 50 weeks, for 3 years)

Laser class: Class 3R

Wavelength: 445 nm to 639 nm

Beam divergence: 4.5 mrad.

Pulse Frequency: 60 Hz

Output : 206 mW

FOV (horizontal): 42.1°

Rated input: DC5 V/1.5 A

Li-ion Battery: DC3.8 V/3400 mAh

Charging time: Via AC power adaptor (not supplied): Approx. 3.3 hours

Via USB Type A port:

Approx. 6.3 hours

Rated output: DC5 V/1.5 A, 1 port

## Notes on use

- Do not point the laser light at a mirror, etc. as the reflected laser light may be harmful to eyes.
- Do not use this product in areas where the use of wireless communications devices is prohibited, such as on airplanes or in hospitals. This product emits radio wave and may affect electronic and medical appliances (pacemakers, etc.).
- Magnetic or electric noise may cause the noise from this product to become louder or interfere with its wireless communications.
- While using, TV, radio or tuner interference may occur. Use this product away from these products.
- Access points may not be discovered correctly when there are multiple Wi-Fi access points that use the same channel.
- Children should only use this product under adult supervision. Keep this product out of reach of infants.
- Do not block the ventilation holes with hands, etc. When using this product, be sure to use the stand (supplied) to prevent the ventilation holes from being blocked. Failure to do so would be dangerous as it may result in overheat of this product.
- Do not put any foreign objects in the ventilation holes.
- Do not insert your fingernails into the ventilation holes and other slots, nor hook your fingernails on the gaps while using this product.
- Do not short-circuit this product. Do not allow metal objects such as hairpins to come into contact with this product or its terminals.
- Do not disassemble or modify this product.
- The battery is built-in with this product and cannot be removed.
- Do not place this product in fire nor heat it in a microwave oven or oven.
- Do not allow this product to get wet with fresh water, sea water, milk, soft drinks or soap water. Do not use this product while wet.
- Do not use or store this product in a place where temperature is extremely high, such as near a fire, under direct sunlight, near a heater or in a car parked in the sun. Do not use this product in a place with poor ventilation, such as while wrapped in a quilt/blanket or in a bag.
- Do not apply a strong impact to this product. Avoid hitting it with a hammer, putting any heavy object on top, stepping on it or dropping it.
- Avoid continuous contact between your skin and this product while charging or in use. Doing so may cause low-temperature burns. Be careful of heat transmitted through clothes as it may also cause low-temperature burns.
- Before connecting a portable device to this product, attach the portable device's battery pack. Connecting a portable device while its battery is removed may cause loss of data or damage to the portable device.
- It has been reported that some portable devices may incur sudden loss of data recorded to memory whether or not they are used with this product (for details, refer to the user manual supplied with the portable device). Before using this

product, be sure to back up data recorded to memory. Sony is not liable for loss of data.

- Do not touch or stick your finger into the connection parts.
- Refer also to the manual of the device that you use in conjunction with this product as you may need to operate the device in order to use it with this product.

## Precautions

This device complies with part 15 of the FCC Rules. Operation is subject to the following two conditions: (1) This device may not cause harmful interference, and (2) this device must accept any interference received, including interference that may cause undesired operation.

Any changes or modifications (including the antennas) to this device that are not expressly approved by the manufacturer may void the user's authority to operate the equipment.

FCC RF Radiation Exposure Statement: FCC RF Radiation Exposure Statement: This equipment complies with FCC RF Radiation exposure limits set forth for an uncontrolled environment. This device and its antenna must not be co-located or operating in conjunction with any other antenna or transmitter. This equipment should be installed and operated with a minimum distance of 20 centimeters between the radiator

and your body.

Note : This equipment has been tested and found to comply with the limits for a Class B digital device, pursuant to part 15 of the FCC Rules. These limits are designed to provide reasonable protection against harmful interference in a residential installation. This equipment generates, uses and can radiate radio frequency energy and, if not installed and used in accordance with the instructions, may cause harmful interference to radio communications. However, there is no guarantee that interference will not occur in a particular installation. If this equipment does cause harmful interference to radio or television reception, which can be determined by turning the equipment off and on, the user is encouraged to try to correct the interference by one or more of the following measures:

- Reorient or relocate the receiving antenna.
- Increase the separation between the equipment and receiver.
- Connect the equipment into an outlet on a circuit different from that to which the receiver is connected.
- Consult the dealer or an experienced radio/TV technician for help.

Modifications not expressly approved by the manufacturer could void your authority to operate the equipment under FCC rules.

**LASER ENERGY - EXPOSURE NEAR  
APERTURE MAY CAUSE BURNS**



**RECYCLING LITHIUM-ION  
BATTERIES**



**USA and Canada Only**

Lithium-Ion batteries are recyclable.

You can help preserve our environment by returning your used rechargeable batteries to the collection and recycling location nearest you.

For more information regarding recycling of rechargeable batteries, call toll free 1-800-822-8837, or visit <http://www.call2recycle.org>

Caution: Do not handle damaged or leaking Lithium-Ion batteries.

The year and month of manufacture is printed on the bottom of this product at the left. The first four digits stand for the year and the last two stand for the month.

**\*For USA only.**

**Customer Service**

Phone: (956) 795-4552 U.S.A.

e-mail: [snl.service@am.sony.com](mailto:snl.service@am.sony.com)

INTERNET: <http://www.sony.com/battery>

**Complies with  
IDA Standards  
DA104328**