

Quick Start Guide



English
PCH-1001/1101



Using your PlayStation®Vita system for the first time

Welcome to your PlayStation®Vita handheld entertainment system. To use your PS Vita system, you need the following types of card media:

Memory Card for the PlayStation®Vita System

Storage for applications downloaded from PlayStation®Network, saved data from games, and other content, including your photos and music.

PlayStation®Vita Card

This card contains PS Vita format software. For some games, the PlayStation®Vita card also stores saved data and additional content.

PCH-1101 Series

SIM Card

You need a SIM card to access a mobile network.

- Notices**
- Some models of the PS Vita system come with card media included. Refer to the parts list included on the package for details.
 - Before you insert or remove a memory card or SIM card, check that the power is off. This helps prevent data corruption or loss.

1 Insert the memory card.

Memory card slot cover
Memory Card

(power) button

2 Turn on your PS Vita system.

When turning on your system for the first time, press and hold down the (power) button for five seconds. If you need to charge the system, see "Charging" on the back of this guide.

PCH-1101 Series

After completing step 1, insert the SIM card.

Some models of the PS Vita system come with the SIM card already installed. Refer to the package for details.

SIM card slot cover
SIM card
XXX XXX XXXX (TBD)

3 Begin to set up your PS Vita system.

Peel the screen displaying the PlayStation®Vita logo by dragging it from the top right to the bottom left to start initial setup.

4 Select your language, time zone, and the date and time.

Drag lists of items to scroll and find your choice. Tap an item to select it, and then tap [Next]. To scroll quickly, flick the list of items.

5 Link your PS Vita system to your PlayStation®Network account.

If you already have an account

You need an Internet connection to link your PS Vita system to your PlayStation®Network account. Find a location where you can connect to a Wi-Fi access point. If you cannot connect to the Internet, you must set up your system as explained in "If you do not have an account".

6 Complete initial setup.

Tap [OK] to complete initial setup of your PS Vita system. An introductory video will play. If you entered your PlayStation®Network account information in step 5, a PlayStation®Network sign-in screen appears after the introductory video. Follow the on-screen instructions to sign in.

You can change settings later from (Settings) on the home screen.

You can access applications for the PS Vita system from the home screen.

PCH-1101 Series

After completing step 4, set up your PS Vita system to use a mobile network.

With a SIM card installed, the next step is to set up your PS Vita system to use a mobile network. Follow the on-screen instructions to complete the settings.

To make these settings at a later time, after completing initial setup, tap (Network Operator) on the home screen.

Connecting to the Internet

When an Internet connection is required, your system automatically searches for Wi-Fi access points, and then the Wi-Fi settings screen appears. For details about connecting to a Wi-Fi access point, refer to the access point documentation or contact the service provider or person who set it up.

If you do not have an account

Set up your PS Vita system for trial use of PlayStation®Network services. To make full use of PlayStation®Network features, you must sign up for a PlayStation®Network account.

- Select [No, I don't], tap [Next], and follow the on-screen instructions.

PCH-1101 Series

Connecting to the Internet using a mobile network

If you entered a Wi-Fi access point, close the Wi-Fi settings screen. The system will instead use the mobile network.

Wi-Fi 設定

Access points found

SSID1	🔒	📶
SSID2	🔒	📶
SSID3	🔒	📶
WPS		🔍
AOSS		🔍

Home screen

Playing games and learning in Welcome Park

In Welcome Park, have fun playing games while learning the basic features of your PS Vita system.

- Digit Dash**
Test your touchscreen skills with this number game.
- Pic-Saw**
Create puzzles from your photos and solve them.

PlayStation®Network

PlayStation®Network offers great online features, such as shopping at PlayStation®Store and communicating with friends.

Use these applications when you are connected to PlayStation®Network.

- PlayStation®Store**
Find and download the latest games and videos. PlayStation®Store is open 24 hours a day. PlayStation®Store access is subject to network availability.
- near**
Take your PS Vita system outside for an adventure. Your footsteps are a treasure map.
- Party**
Chat with your friends all over the world any time you want.

SONY



4-408-547-11(1)

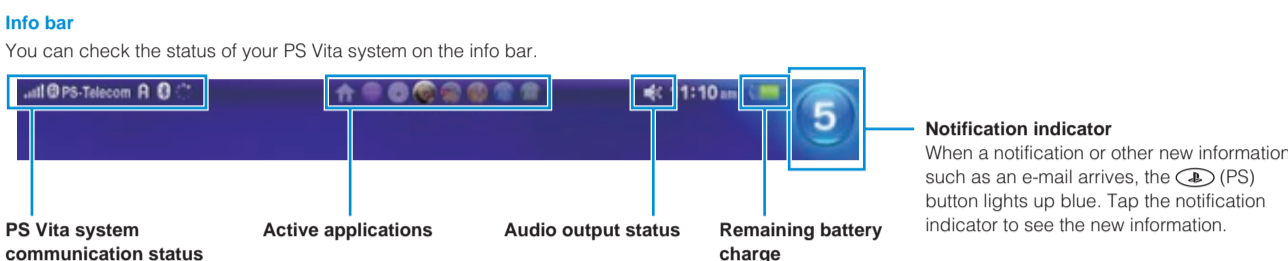
"PS" and "PlayStation" are registered trademarks of Sony Computer Entertainment Inc. "PS VITA" and "LIVEAREA" are trademarks of the same company. "SONY" and "PS" are registered trademarks of Sony Corporation.

Information about system functionality and images published in this document may vary from those for your PS Vita system, depending on the system software version in use.

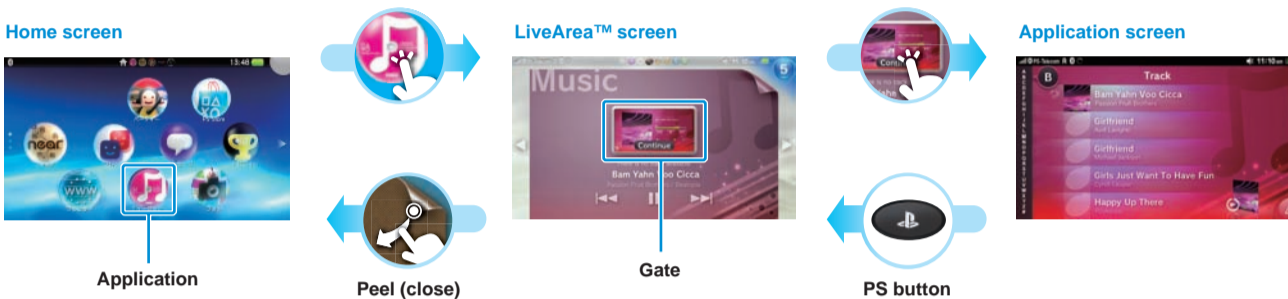


Using the screen

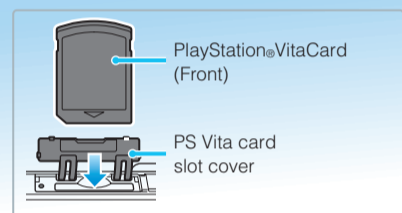
Start games and launch applications from the home screen. You can run multiple games and applications at the same time.



When you tap the icon for an application on the home screen, the application's LiveArea™ screen appears. On the LiveArea™ screen, tap the gate to start the application.



Playing games

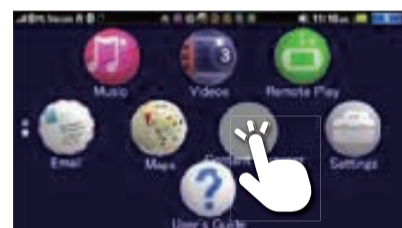


1 Insert the PlayStation®Vita card.

PlayStation®Vita contains PS Vita format software. When the PS Vita card is inserted, the icon for the game appears on the home screen.

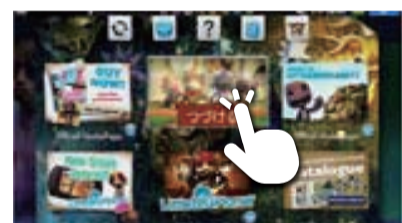
Downloading (purchasing) games from PlayStation®Store

You can buy games and game add-ons online. To do so, you need a PlayStation®Network account, an Internet connection and a memory card.



2 Start the game

On the home screen, tap the icon for the game. The LiveArea™ screen for the game appears. If you are connected to the Internet, various details, such as the latest information about the game, appear on the LiveArea™ screen.



3 Start playing the game.

Tap [Start] on the gate on the LiveArea™ screen.

Saving data for a game

How to save data depends on the game. For details, see the instructions for the game.

If you use the saved data on the memory card or the PS Vita card on a different PS Vita system, there might be times when you cannot earn trophies or save the data. See the User's Guide for details about saved data and trophies.

Pausing a game



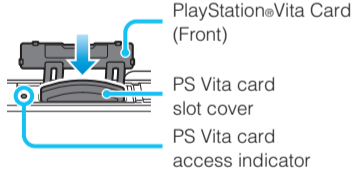
Press the (PS) button to pause a game and return to the LiveArea™ screen. To continue the game, tap [Continue] on the LiveArea™ screen.

Ending a game



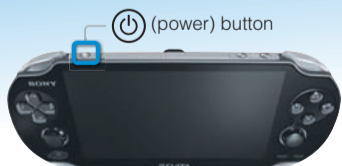
Press the (PS) button to return to the LiveArea™ screen, and then peel the screen.

Removing the PlayStation®Vita card



Press on the PS Vita card to release it, and then remove the card. Do not remove the PS Vita card when the access indicator is blinking.

Standby mode and turning off the power completely

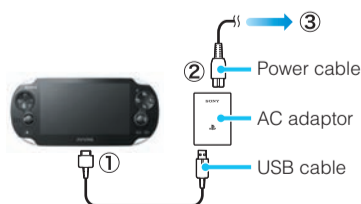


Turning off the screen while the application is still active (standby mode)

Press the (power) button. To exit standby mode, press the (power) button again or press the (PS) button.

Turning the power off completely

Press and hold the (power) button for two seconds and then tap [Power Off]. When turning on the system the next time, press and hold the (power) button for two seconds.



Charging

To charge the PS Vita system, connect it to a power source as shown in the diagram. While the system is charging, the (PS) button lights up orange. For details including approximate charging times, refer to the User's Guide.

Supporting documentation for your PS Vita system

Safety Guide

Contains precautions for the safe use of your PS Vita system, system specifications, and service information. Before using this product, carefully read all product documentation and retain it for future reference.

User's Guide

Explains how to set up and use the features of your PS Vita system. To read the User's Guide, tap [User's Guide] on the (Settings) LiveArea™ screen. An internet connection is needed to read the User's Guide. You can also read the User's Guide on a PC by visiting the following website:

manuals.playstation.net/document/jp/xxx

Support website

us.playstation.com/VITAqsg

Visit the Support Knowledge Center for additional details and technical information regarding your PS Vita system.

System update website

us.playstation.com/support/systemupdates/xxxx

Visit the System Update website for information about PS Vita system software updates. System updates allow you to add features and improve system security. A message appears on the PS Vita screen when an update is required. It is recommended that you always use the latest version of the system software.