

# Wireless LAN PC Card (2.4 GHz/5 GHz IEEE 802.11a/b/g)

## Quick Start Guide

Before reading this guide, be sure to read the "Read This First" supplement.

This guide explains how to install the software required to use of the Wireless LAN PC Card (2.4 GHz/5 GHz IEEE 802.11a/b/g) PCWA-C800S and the necessary settings to establish a connection with Access Point.



© 2003 Sony Corporation Printed in Japan

## Overview

The Wireless LAN PC Card (2.4 GHz/5 GHz IEEE 802.11a/b/g) PCWA-C800S is a PC Card type wireless network card. With this card, you can build a wireless LAN.

This guide explains how to use the supplied CD-ROM to install the Wireless LAN PC Card device driver and Wireless Panel. You must insert the Wireless LAN PC Card into your computer before installing the device driver and Wireless Panel.

### 1 Installing the software



### 2 Making Access Point Connection Settings

The setting procedure differs according to your operating system. Refer the section to your operating system.

- Microsoft and Windows are registered trademarks of Microsoft Corporation in the United States of America and/or other countries.
- Sony, VAIO, V.A.I.O., CarrierGate, and the Eco Info logo are trademarks of Sony Corporation.
- In this manual, the Wireless LAN PC Card (2.4 GHz/5 GHz IEEE 802.11a/b/g) PCWA-C800S is referred to as the Wireless LAN PC Card.
- In this manual, Microsoft® Windows® 2000 Professional is referred to as Windows 2000, Microsoft® Windows® XP Professional and Microsoft® Windows® XP Home Edition are referred to as Windows XP.

## Step 1 Making Access Point

The installation procedures are performed with an easy-to-use wizard. Before you start, verify the following.

- The wizard located on the CD-ROM supplied with the Wireless LAN PC Card. Make sure that your CD-ROM drive is ready for use.
- When using the Wireless LAN PC Card in Access Point Network Connection mode, you must install the Access Point and make the necessary settings before proceeding. For details about these procedures, refer to your Access Point user's guide.

### Notes

- To install the supplied software on a computer running the Windows 2000 operating system, log on with a user account listed in "Administrators". To install the supplied software on a computer running the Windows XP operating system, log on with a user account with administrator access privileges. You cannot install the software or modify settings when logged on with any other account.
- To change any of the Wireless Panel settings on a computer running the Windows 2000 operating system, log on with a user account listed in "Administrators". You cannot modify settings when logged on with any other account.
- Exit all other Windows operating system programs.

### Important

#### Computer Firewall Functions

##### When using the Windows XP "Internet Connection Firewall" function

Enabling the Windows XP "Internet Connection Firewall" function may prevent you from being able to access your computer through wireless communication. (This function is inactive under the Windows XP operating system default settings.) Because of this function, you may not be able to connect to your network when you change your Access Point settings. If this happens, deactivate the "Internet Connection Firewall" function, connect to the network, and then reactivate the function. For details, refer to Windows XP Help.

### Notes

Network security is an important issue. You are urged to consider carefully how best to protect your computer.

##### When using a personal firewall function provided by virus scanning or network security software

Virus scanning and network security software sometimes includes a function called a "personal firewall" that is designed to prevent illegal access by outside entities. Depending on the software, the security level of this function may be initially set to a high level. If this high security level setting is left in effect, it may be impossible for an outside entity to access your computer. This can cause problems such as not being able to connect to the network when changing the Access Point's settings. In this event, lower the security level in order to permit the network connection. For details, refer to the manuals provided with your software.

### Notes

- Pay special attention to security issues.
- For questions regarding firewall functions, please contact your firewall software manufacturer.

1 When using the Wireless LAN PC Card in Access Point Network Connection mode, turn on the Access Point.

### Hint

The Access Point Network connection mode is used when building a network around an access point (sold separately). The Peer to Peer Network connection mode is used when a network is composed mainly of computers with wireless capabilities (i.e. that do not need to connect through an access point).

2 Insert the supplied CD-ROM into the CD-ROM drive of your computer.

The Easy Installation Wizard starts automatically.



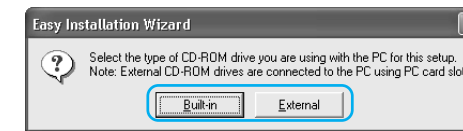
### Hint

If the Easy Installation Wizard does not appear when you insert the supplied CD-ROM into your CD-ROM drive, double-click "Setup.exe" ( ) on the CD-ROM. Depending on the settings of your computer, the file name may be "Setup".

3 When the following message appears, click "OK".



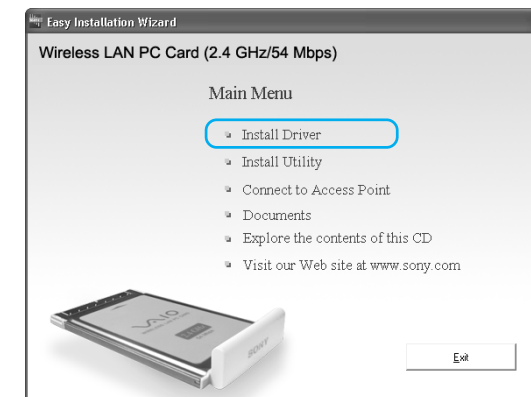
4 Click the button that corresponds to your type of CD-ROM drive.



If you are using an external CD-ROM drive, follow the instructions on the screen and copy the contents of the CD-ROM to your hard disk. When the copy is complete, click "Main Menu".

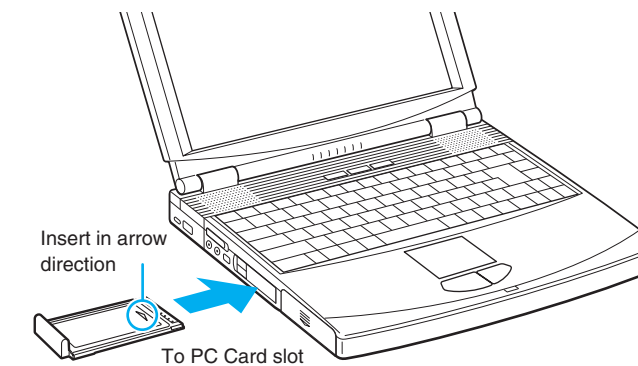
The Main Menu of the Easy Installation Wizard appears.

5 Click "Install Driver".



6 When prompted, insert the Wireless LAN PC Card in the PC card slot.

You do not need to turn off your computer when you insert the Wireless LAN PC Card.



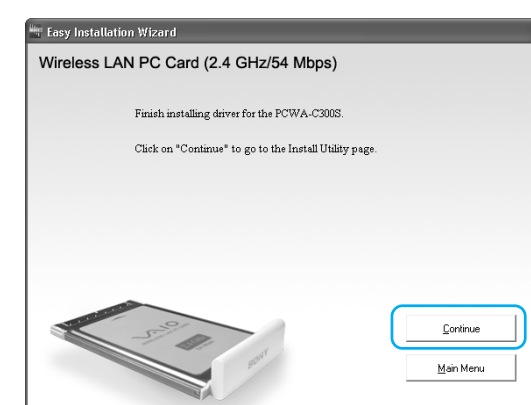
### Notes

- If your computer has two PC Card slots, insert the Wireless LAN PC Card into the top slot. If inserted into the bottom slot, the antenna of the Wireless LAN PC Card will block the top slot.
- Depending on the depth and configuration of PC card slots on your computer, you may not be able to insert the Wireless LAN PC Card.

Push the Wireless LAN PC Card into the slot until it is firmly seated. If the card does not fit easily, do not force it in. Take the card out and try reinserting it.

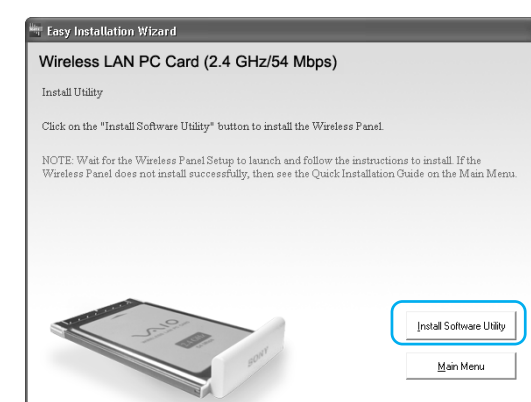
When you insert the Wireless LAN PC Card, the device driver installed automatically. Wait until the installation is complete.

7 When installation is complete, the following screen appears. Click "Continue".



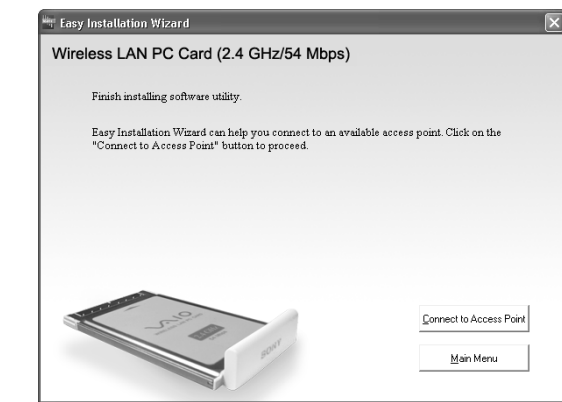
Continuing allows you to install the utility software.

8 Click "Install Software Utility".



The utility installation starts.

9 Follow the instructions on the screen to complete the installation.



This completes the installation of the software.

Once Wireless Panel is installed, appears on your Windows operating system taskbar.

### What to do next

Make Access Point connection settings.

When using the Windows 2000 operating system, proceed overleaf. When using the Windows XP operating system, click "Main Menu" as necessary to return to the first screen of the wizard, or click to close the Easy Installation Wizard, and then proceed overleaf.

### To remove the Wireless LAN PC Card

- 1 Quit any software accessing the wireless LAN (e.g. Internet Explorer).
- 2 Click on your Windows operating system taskbar.
- 3 Click "Safely remove Sony 802.11g Wireless LAN Adapter" or "Stop Sony 802.11g Wireless LAN Adapter" on the shortcut menu that appears.

### If your computer has two PC Card slots

- When using a computer which has two PC Card slots arranged vertically (one above the other), insert the Wireless LAN PC Card into the top slot. If inserted into the bottom slot, the antenna of the Wireless LAN PC Card will block the top slot.
- If you insert the Wireless LAN PC Card into a slot other than the one you usually use, the computer treats the card as a new device and automatically begins installing device drivers for it. Completing the driver installation makes it possible to use the Wireless LAN PC Card in that slot. Installation is performed automatically by the installation wizard. (For instructions on how to uninstall the Wireless LAN PC Card driver, see page 50.)

### Hint

If you are using the Windows Me or Windows 2000 operating system, you can register up to 32 networks for each PC card slot. However, you have to register each network individually. You cannot share the settings across slots.



## Step 2 Making Access Point Connection Settings

After installing the necessary software, you must make the necessary settings to establish a connection with the Access Point. If you want to establish a connection in Peer to Peer Network connection mode, refer to the Wireless Panel Help for details about the necessary settings.

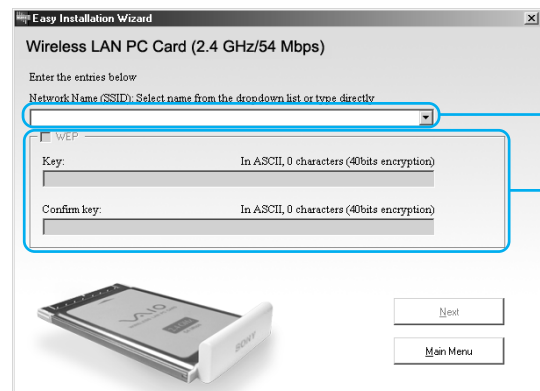
## Windows 2000 operating system

1 Click “Connect to Access Point”.



The following screen appears.

2 Make the appropriate settings.



1 Network Name (SSID)

This is a unique ID used to identify wireless networks. The setting can be made individually for Access Point Network connection mode and Peer to Peer Network connection mode. When connecting to an existing network, consult your network administrator regarding the proper settings. When changing an existing Network Name, you can use up to 32 alphanumeric characters (including symbols).

### Hint

- Opening the “Network Name” drop-down list will show the Network Names of any Access Points within range. You can then select a Network Name from the list.
- When using the Wireless LAN Access Point PCWA-A320, the default Network Name (SSID) of the Access Point is shown on the ID label of the Access Point. For details on the position of the label and other information, refer to the manuals provided with the Access Point.

2 WEP

If Data Encryption (WEP) is enabled for the Access Point to which you connect, select this item. When this item is selected, you also need to enter the encryption key (WEP key) in the “Key” and “Confirm key” fields.

The data encryption function serves to prevent unauthorized access to the network. For security reasons, it is strongly recommended that you enable this feature. The setting can be configured individually for Access Point Network connection mode and Peer to Peer Network connection mode. When connecting to an existing network, consult your network administrator regarding the proper settings. For information on how to control this setting at the Access Point, refer to the manuals of the Access Point.

### Key

If data encryption (WEP) is enabled for the Access Point, enter the encryption key (WEP key) here. Because this key functions as a password that enables communication with the network, the key entered here must be exactly the same as that set for the Access Point. Only computers for which the key has been configured correctly can join the network. The number of characters depends on the “ASCII/Hex” and “Length” settings (see table below).

	ASCII	Hexadecimal
Permissible characters	Alphanumeric characters	0 to 9, A to F, a to f
Maximum number of characters	5 or 13 characters	10 or 26 characters

### Confirm key

Re-enter the encryption key that you entered in the “Key” box.

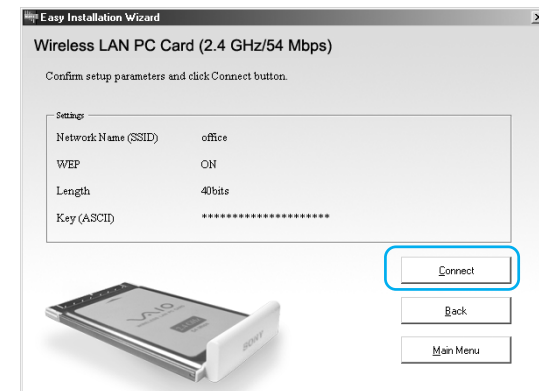
### Hint

This product supports a function called “roaming” which allows the creation of a wireless network with multiple Access Points for wider coverage. When using this function, configure all Access Points to the same Network Name (SSID) and Data Encryption (WEP) settings.

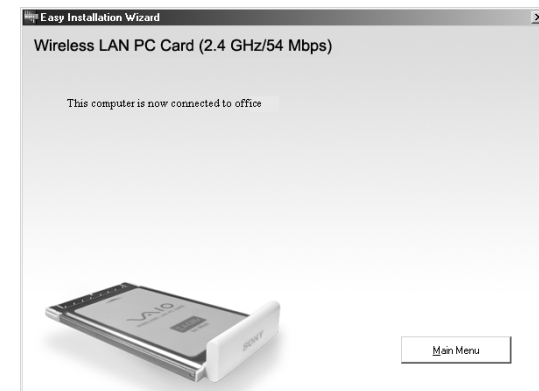
3 When you are done, click “Next”.

The following screen appears.

4 Make sure that the settings are correct, and then click “Connect”.



Wait until the Wireless LAN PC Card connects to the Access Point. When the Wireless LAN PC Card establishes the connection with the Access Point, the following screen appears.



This completes the Access Point connection settings procedure.

### Hint

You can change the connection settings and network connection mode from Wireless Panel. For details about how to use Wireless Panel, refer to the Wireless Panel Help.

## Windows XP operating system

### Notes

#### Before configuring the Wireless LAN PC Card

Perform the following steps to confirm that the “Use Windows to configure my wireless network settings” check box is selected. This option is selected by default.

1 Click “Start”, “Control Panel”, and double-click “Network Connections”.

### Hint

If “Network Connections” is not displayed, click “Switch to Classic View”.

2 Right-click “Wireless Network Connection \*” (“\*” is a number that differs according to the computer settings), and click “Properties” on the shortcut menu.

3 Click the “Wireless Network” tab.

4 Confirm that the “Use Windows to configure my wireless network settings” check box is selected. If not, select it.

1 Click “Start”, point to “Connect To”, and click “Show all connections”.

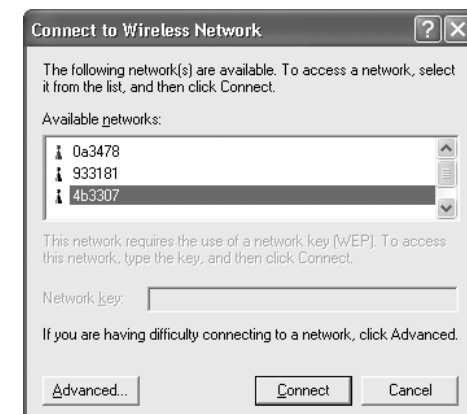
The “Network Connections” window appears.

2 Right-click “Wireless Network Connection \*” (“\*” is a number that differs according to the computer settings), and click “View Available Wireless Networks” on the shortcut menu.

The “Connect to Wireless Network” dialog box appears.

### Hint

- If the computer is not connected to a wireless network, an “x” is shown for the “Wireless Network Connection \*” icon in the “Network Connections” window.



- If you have installed Windows XP Service Pack 1, see page 26.

3 From the “Available Wireless Networks” list in the “Connect to Wireless Network” dialog box, select the Access Point to which you want to connect.

### Hint

The “Available Wireless Networks” list shows the names of Access Points within communication range of the computer. When using the Wireless LAN Access Point PCWA-A320, the default Network Name (SSID) of the Access Point is shown on the ID label of the card. For details on the position of the label and other information, refer to the manuals of the Access Point. Because the Network Name of an Access Point may have been changed, consult your network administrator if you are not sure.

4 If Data Encryption (WEP) is enabled for the Access Point, enter the encryption key (WEP key) in the “Network key” field.

The key entered here must be exactly the same as that set for the Access Point. Permissible characters and their maximum number are detailed below.

	ASCII	Hexadecimal
Permissible characters	Alphanumeric characters	0 to 9, A to F, a to f
Maximum number of characters	5 or 13 characters	10 or 26 characters

### Hint

- ASCII and hexadecimal characters are automatically identified.
- The data encryption (WEP) function serves to prevent unauthorized access to the network. When the function is enabled, only computers configured with the correct encryption key (WEP key) can join the network. For security reasons, it is strongly recommended that you enable this feature. The setting can be made individually for Access Point Network connection mode and Peer to Peer Network connection mode. When connecting to an existing network, consult your network administrator regarding the proper settings. For information on how to control this setting at the Access Point, refer to the manuals of the Access Point.

### When using Service Pack 1

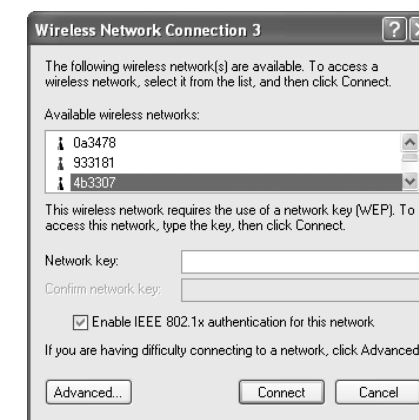
If you installed Windows XP Service Pack 1, steps 3 and 4 must be performed as follows.

3 From the “Available Wireless Networks” list in the “Connect to Wireless Network” dialog box, select the Access Point to which you want to connect.

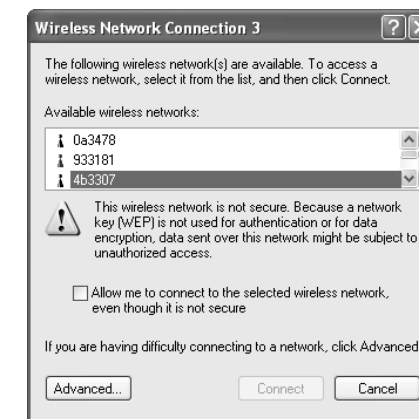
4 Depending on the Data Encryption (WEP) settings of the Access Point, proceed as follows.

- Data Encryption (WEP) at selected Access Point is enabled

Enter the encryption key (WEP key) in the “Network key” field. (The input is shown only as asterisks.) For verification, the same string must be entered once more in the “Confirm network key” field.



- Data Encryption (WEP) at selected Access Point is disabled Select the “Allow me to connect to the selected wireless network, even though it is not secure” check box. (For security reasons, enabling data encryption is recommended.)



5 Click “Connect”.

Connection to the Access Point is established.

If the Access Point has already been configured, the setup procedure is now complete.

If you want to change the Access Point settings, refer to the manuals of the Access Point for information on how to proceed.

### Notes

To use an Access Point to connect to the Internet, you must change the Access Point default settings.

### Hint

For additional information on the wireless network capabilities of the Windows XP operating system, refer to Windows XP “Help and Support”. (Click “Start”, and click “Help and Support”, enter “wireless” into the Search field, and click the green arrow icon.) You may also wish to consult the Windows XP operating system documentation.

## Using the Wireless Panel

The Wireless Panel is a software application that shows information about the communication status of the computer connected to the wireless network. Normally, the Wireless Panel runs in the background and only shows the radio signal condition by means of the signal level indicator on your Windows operating system taskbar. The main screen of the Wireless Panel contains more detailed information. When running under operating systems other than Windows XP, communication setup and network switching are also performed using the Wireless Panel.

### Notes

- To use the Wireless Panel under the Windows 2000 operating system to modify communication settings, log on with a user account listed in “Administrators”. You cannot modify settings when logged on with any other account.
- On a computer running the Windows XP operating system, communication setup and network switching are not performed with the Wireless Panel but with built-in functions of the Windows XP operating system. However, the Wireless Panel can be used to check the communication status.

## Signal level indicator

The communication status is shown by the signal level indicator on your Windows operating system taskbar.



Signal level indicator

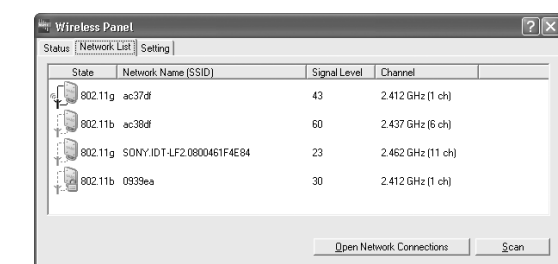
### Meaning of indicator appearance

	Excellent
	Good
	Poor
	Out of range
	Card not inserted (Wireless LAN PC Card is not inserted or not recognized correctly)
	Peer to Peer (Communicating in Peer to Peer Network connection mode)

## Opening the Wireless Panel

To open the Wireless Panel, proceed as follows.

Double-click the signal level indicator on your Windows operating system taskbar. The Wireless Panel appears.



### Hint

- When you move the mouse pointer over an item in the Wireless Panel screen, a short description of that item appears.
- For details about how to use Wireless Panel, refer to the Wireless Panel Help.



# Wireless LAN PC Card (2.4 GHz/5 GHz IEEE 802.11a/b/g)

## Read This First Lisez-moi en premier



© 2003 Sony Corporation Printed in Japan

### WARNING

To prevent fire or shock hazard, do not expose the unit to rain or moisture.

### Owner's Record

The model and serial numbers are located on the back of the unit. Record the serial number in the space provided below. Refer to them whenever you call upon your Sony dealer regarding this product.

Model No. PCWA-C800S  
Serial No. \_\_\_\_\_

### CAUTION

Any changes or modifications not expressly approved in this manual could void your warranty.

FCC ID: AK8PCWAC800S

Exposure to Radio Frequency Radiation.

The radiated output power of the Wireless LAN PC Card is far below the FCC radio frequency exposure limits. Nevertheless, the Wireless LAN PC Card shall be used in such a manner that the potential for human contact during normal operation is minimized.

Only use the product indoors when using it with 802.11a (5 GHz).

### Note

This equipment has been tested and found to comply with the limits for a Class B digital device, pursuant to Part 15 of the FCC Rules. These limits are designed to provide reasonable protection against harmful interference in a residential installation. This equipment generates, uses, and can radiate radio frequency energy and, if not installed and used in accordance with the instructions, may cause harmful interference to radio or communications. However, there is no guarantee that interference will not occur in a particular installation. If this equipment does cause harmful interference to television reception, which can be determined by turning the equipment off and on, the user is encouraged to try to correct the interference by one or more of the following measures:

- Reorient or relocate the receiving antenna.
- Increase the separation between the equipment and receiver.
- Connect the equipment into an outlet on a circuit different from that to which the receiver is connected.
- Consult the dealer or an experienced radio/TV technician for help.

### Declaration of Conformity

Trade Name: Sony  
Model No: PCWA-C800S  
Responsible Party: Sony Electronics Inc.  
Address: 680 Kinderkamack Road,  
Oradell, NJ 07649 USA

Telephone: 201-930-6972  
This phone number is for FCC-related matters only.  
This device complies with part 15 of the FCC Rules.  
Operation is subject to the following two conditions:  
(1) This equipment may not cause harmful interference, and  
(2) this equipment must accept any interference received, including interference that may cause undesired operation.

You are cautioned that any changes or modifications not expressly approved in this manual could void your authority to operate this equipment.

## Safety Information

### WARNING

- Opening the product, for whatever reason, could lead to damages that are not covered by the warranty.
- Do not use this product on hospital premises. Doing so may cause medical devices to malfunction.
- If using the product near a pacemaker, make sure it is at least 9 inches (22 cm) away from the pacemaker.
- Do not use this product in an aircraft, as doing so could cause the aircraft's equipment to malfunction. Make sure you remove the equipment from the PC card slot before carrying your computer onto an aircraft.
- Do not apply unnecessary physical strain on the product when it is inserted in your computer as this could damage the product and/or your computer.
- This products is made for use in USA and Canada only.

### FCC RF Exposure

Install and connect this product by following descriptions in its Operating Instructions before using it. This equipment generates and radiates radio frequency energy. SAR (Specific Absorption Rate) for this device was measured in accordance with FCC OET Bulletin 65, Supplement C and guidelines established in IEEE C95.1-1991. In order to comply with FCC RF exposure limits please maintain at least 4 mm (0.16 in) spacing between the user and the antenna of this device while it is in use. This product can only be used with desktop computers and laptop (notebook) computers with side mounted PCMCIA slots. This device cannot be used with other types of host devices, such as PDAs. Users are not permitted to make changes or modify the system in any way.

### For customers in Canada

- This class B digital apparatus complies with Canadian ICES-003.
- Operation is subject to the following two conditions; (1) this device may not cause interference, and (2) this device must accept any interference, including interference that may cause undesired operation of the device.
- To prevent radio interference to the licensed service, this device is intended to be operated indoors and away from windows to provide maximum shielding. Equipment (or its transmit antenna) that is installed outdoors is subject to licensing.
- The term "IC" before the equipment certification number only signifies that Industry Canada technical specifications were met.

### Pour les utilisateurs au Canada

- Cet appareil numérique de la classe B est conforme à la norme NMB-003 du Canada.
- L'utilisation de ce dispositif est autorisée seulement aux conditions suivantes : (1) il ne doit pas produire de brouillage et (2) l'utilisateur du dispositif doit être prêt à accepter tout brouillage radioélectrique reçu, même si ce brouillage est susceptible de compromettre le fonctionnement du dispositif.
- Pour empêcher que cet appareil cause du brouillage au service faisant l'objet d'une licence, il doit être utilisé à l'intérieur et devrait être placé loin des fenêtres afin de fournir un écran de blindage maximal. Si le matériel (ou son antenne d'émission) est installé à l'extérieur, il doit faire l'objet d'une licence.
- Le terme "IC" avant le numéroté d'homologation ne signifie seulement que les normes d'Industrie du Canada ont été respectées.

### About the supplied software

THE SUPPLIED SOFTWARE IS SUPPLIED PURSUANT TO THE APPLICABLE END-USER LICENSE AGREEMENT.

- Copyright laws prohibit reproducing the software or the software manual in whole or in part, or renting the software without the permission of the copyright holder.
- In no event will SONY be liable for any financial damage or loss of profits, including claims made by third parties, arising out of the use of the software supplied with this product.
- In the event a problem occurs with this software as a result of defective manufacturing, SONY will replace it at SONY's option or issue a refund; however, SONY bears no other responsibility.
- The software provided with this product cannot be used with equipment other than that which is designated for use with.
- Please note that, due to continued efforts to improve quality, the software specifications may be changed without notice.

Program © 2001, 2002, 2003 Sony Corporation.  
© 2000-2003 Atheros Communications, Inc., All Rights Reserved  
Documentation © 2003 Sony Corporation

Sony, VAIO, CarrierGate, and the Eco Info logo are trademarks of Sony Corporation. Microsoft and Windows are registered trademarks of Microsoft Corporation in the United States of America and/or other countries. MMX and Pentium are registered trademarks of Intel Corporation. All other trademarks are trademarks of their respective owners.



- In this manual, Microsoft® Windows® 2000 Professional is referred to as Windows 2000.
- In this manual, Microsoft® Windows® XP Professional and Microsoft® Windows® XP Home Edition are referred to as Windows XP.

### Notes

- The user interface of the Sony supplied software may differ slightly from that shown in this manual.
- This manual is written based on the assumption that you are familiar with basic operations of the Windows operating system. For computer operations, refer to manuals that come with your computer.

## Overview

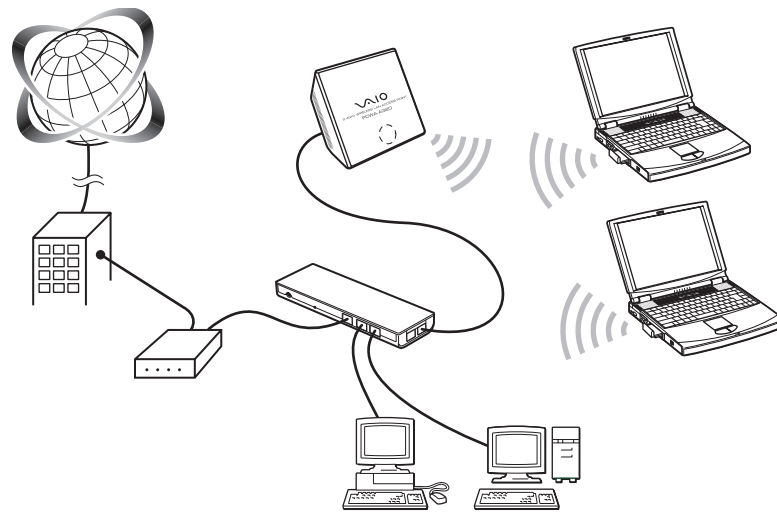
The Wireless LAN PC Card (2.4 GHz/5 GHz IEEE 802.11a/b/g) PCWA-C800S is a PC Card type wireless network card. With this card, you can build a wireless LAN, allowing multiple computers to communicate and exchange data without needing any physical connection. The supplied Wireless Panel software lets you easily configure the card for multiple networks. For example, you can store different settings required for networking at the office and at home, or quickly switch between Access Point (Infrastructure) Network connection mode and Peer to Peer (Ad-Hoc) Network connection mode. This greatly facilitates use of the card in various environments and for a range of applications.

### Hints

- The network mode can easily be switched using the supplied Wireless Panel software.
- To use the card in Access Point Network connection mode, an IEEE 802.11g or IEEE 802.11b compliant Wireless LAN Access Point\* (available separately) is necessary.

### Accessing the Internet from various points within your home (Access Point Network connection mode)

With a separately available Access Point you can easily build a wireless network. By connecting a DSL modem, cable modem, or ISDN router to the Access Point, you can access the Internet from the living room, bedroom, or any other convenient location in the house. Equipping multiple computers with a Wireless LAN PC Card also allows you to exchange files between the computers via the Access Point.

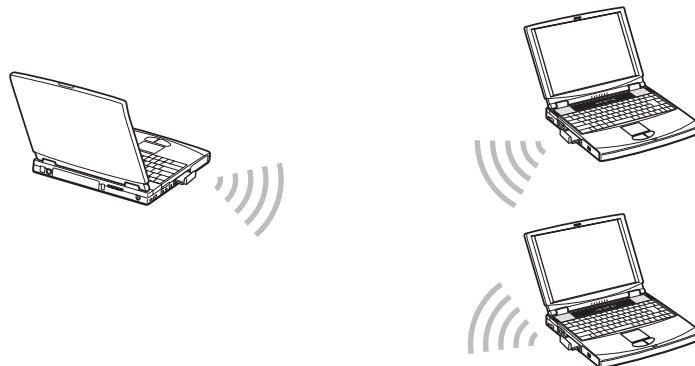


### Hint

The illustration above gives an example of a system configuration using the Access Point Network connection mode. Two computers equipped with Wireless LAN PC Cards establish communications with the Wireless Broadband Router PCWA-AR800. The Wireless Broadband Router is connected to the ADSL modem, therefore it is possible to access the Internet through this wireless connection.

### Direct communication between computers (Peer to Peer Network connection mode)

The Peer to Peer Network connection mode enables computers equipped with Wireless LAN PC Cards to communicate directly. This allows file sharing in locations where the Wireless LAN Access Point is not present.



## Documentation and Help file

This product comes with the following documentation and help files.

- Read This First (this document)**  
Explains how to install the Wireless LAN PC Card and how to configure all settings of the card.
- Quick Start Guide**  
This document explains how to install software required to use the Wireless LAN PC Card.
- Troubleshooting Guide**  
This document provides solutions to the most common problems users have with their Wireless LAN PC Card.
- Wireless Panel Online Help**  
This is the Online Help of the supplied Wireless Panel software. Refer to it for instructions on how to use the software.

## Supplied software

The supplied CD-ROM contains the following software.

- Wireless LAN PC Card driver**  
This device driver is necessary to the operation of the Wireless LAN PC Card.
  - Wireless Panel**  
Wireless Panel is a utility software that lets you configure the computer for the wireless LAN and monitor the communication status. The software is also used to switch between networks. Normally, the Wireless Panel appears as an icon on your Windows operating system taskbar, which shows the communication status.
- When using the card for the first time, see Read This First information on how to install the Wireless LAN PC Card driver and the Wireless Panel.**

## System requirements

To use the supplied software, the following system requirements must be met:

- Windows®-compatible PC:**
  - 128 MB RAM or more
  - Card Bus compliant PC card slot
  - CD-ROM drive (for software installation)
- Operating system:**
  - Microsoft® Windows® 2000 Professional
  - Microsoft® Windows® XP Home Edition
  - Microsoft® Windows® XP Professional
- Display:**  
High color (16-bit color) or higher, 800 × 480 pixels or higher

### Notes

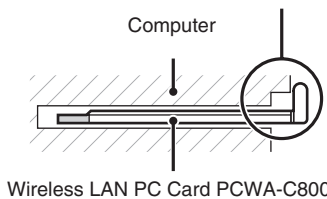
- Correct operation is not assured for all computers, even if satisfying the above system requirements.
- Correct operation in an OS upgrade environment is not assured, except for factory provided Windows XP operating system upgrade packages for Sony VAIO® series computers.
- For Internet access via the wireless LAN, an IEEE 802.11g or IEEE 802.11b compliant Wireless LAN Access Point (available separately) is necessary.
- An Internet Service Provider (ISP) is required for Internet access.

## Precaution when using the Wireless LAN PC Card

Because of the particular shape of the PCWA-C800S, it may not be possible to insert it into all computers.

- The PCWA-C800S has an antenna protruding up 0.4 in. (9 mm). If obstructions 0.6 in. (15 mm) in length or more come in contact with it when you insert the PCWA-C800S into the PC card slot, you cannot fully insert the wireless LAN PC card into the slot.

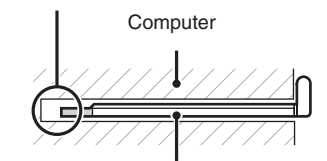
The antenna is obstructed. The PCWA-C800S cannot be inserted.



Wireless LAN PC Card PCWA-C800S

- If the PC card slot of your computer is more than 3.3 in. (85 mm) in length, you cannot fully insert the PCWA-C800S into the slot.

The PC card slot is longer than 3.3 in. (85 mm). The PCWA-C800S cannot be inserted.



Wireless LAN PC Card PCWA-C800S

For details, visit <http://www.sony.com/wirelessupport>

## Precautions

### Safety

Do not drop or cause a mechanical shock to the Wireless LAN PC Card, as this may damage the unit.

### Installation

Do not expose the Wireless LAN PC Card to the following conditions:

- Unstable surfaces
- High humidity or poor ventilation
- Excessive dust
- Direct sunlight or extreme heat
- Closed cars
- Magnetized location (near magnets, speakers, or televisions)
- Locations exposed to frequent vibration
- Locations where the transmission of radio waves may be obstructed by metal plates or concrete walls

### Operation

If the Wireless LAN PC Card is moved directly from a cold location to a warm locations, or if it is placed in a very damp environment, moisture may condense on the parts inside. The Wireless LAN PC Card may not operate properly if moisture condensation occurs.

### Cleaning

Clean the casing with a soft cloth, lightly moistened with water or a mild detergent solution. Do not use any type of abrasive pad, scouring powder, or solvent such as alcohol or benzene as it may damage the finish of the casing.

## Specifications

### Protocol support

TCP/IP compliant

### Standard compliance

IEEE 802.11a  
IEEE 802.11b  
IEEE 802.11g

### Radio frequency

2.4 GHz wireless network:  
2.4 to 2.4835 GHz (ISM band)  
5 GHz wireless network:  
5.11 to 5.35 GHz

### Modulation

DS-SS  
OFDM

### General

Power requirements  
3.3 V DC (supplied from the computer through the PC card adapter)

Current  
Peak current at transmission: 540 mA  
Peak current at reception: 330 mA

Connector  
PC Card Card Type II (Card Bus)

Dimensions  
Approx. 2.2 × 0.2 × 3.6 inches  
(Approx. 54 × 5 × 91 mm) (W × H × D)  
(Antenna height: 0.55 inches (Approx. 14 mm))

Mass  
Approx. 1.4 oz. (Approx. 40 g)

Operating temperature  
41°F to 95°F (5°C to 35°C) (not condensed)

Environment temperature  
-4°F to 140°F (-20°C to 60°C) (not condensed)

### Supplied accessories

- Wireless LAN PC Card
- CD-ROM
- Read This First
- Quick Start Guide
- Troubleshooting Guide
- Warranty Card

Design and specifications are subject to change without notice.

## Getting help

This section describes how to get help and support from Sony, as well as troubleshooting tips for your Wireless LAN PC Card.

### About Sony's Support Options

Sony provides several support options for your Wireless LAN PC Card.

**Read This First** (This manual) This document contains important information that you should read before using the Wireless LAN PC Card.

**Quick Start Guide** explains how to install software required to use the Wireless LAN PC Card PCWA-C800S.

**Troubleshooting Guide** contains answer to frequently asked questions and common problems.

**Wireless Panel Online Help** is the Online Help of the supplied Wireless Panel utility software. Refer to it for instructions on how to use the software.

**The Sony Wireless LAN products support Web site <http://www.sony.com/wirelesslansupport>** provides the latest information on your Wireless LAN products.

**The Sony e-mail support service** answers your questions by electronic mail. Just send your question in an e-mail message and a customer service representative will reply. To send a question to Sony e-mail support, fill out the e-mail form at <http://www.ita.sel.sony.com/support/pc/email.html>

**The Sony fax-back service** provides you with answers to commonly asked questions. You can use this automated service to request a list of available topics then select the topics you want to receive. To contact the Sony fax-back service, call **1-877-760-7669**.

**The Sony Customer Information Services Center** offers information about your Wireless LAN products and other Sony products that work with your computer. To contact the Sony Customer Information Services Center, call **1-877-760-7669**.  
**Open 24 hours/day, 7 days/week.**