

01US01CO

DRAFT

SONY®

X-XXX-XXX-11 (1)

1 Setting up your
CLIE™ handheld

2 Basic operations of your
CLIE™ handheld

3 Connecting to the
Internet

4 Have a try
Taking pictures / Recording
movies
Recording a voice memo
Listening to music
Managing schedule events /
addresses
Viewing computer documents
Using the Bluetooth™
function

**CLIE™ handheld
components**

For the latest information on support
and accessories,
check our official Sony CLIE website

For customers in the U.S.A. and Canada
<http://www.sony.com/clie/>

For customers in Australia, Hong Kong, Malaysia,
Mexico, New Zealand, Singapore, Taiwan and Thailand
<http://vaio-online.sony.com/clie/>

Read This First

Operating Instructions

<http://www.sony.net/>



Printed using VOC (Volatile Organic Compound)-free
vegetable oil based ink.

Printed in Japan



* 4 - 6 7 5 - 2 4 0 - 1 1 *

4-675-240-11

Personal Entertainment Organizer

**PEG-UX50
PEG-UX00**

CLIE™

© 2003 Sony Corporation

Bluetooth®

MEMORY STICK

SONY[®]

X-XXX-XXX-11 (1)

Read This First

Operating Instructions

1 Setting up your
CLIÉ™ handheld

2 Basic operations of your
CLIÉ™ handheld

3 Connecting to the
Internet

4 Have a try
Taking pictures / Recording
movies
Recording a voice memo
Listening to music
Managing schedule events /
addresses
Viewing computer documents
Using the Bluetooth[®]
function

**CLIÉ™ handheld
components**

Personal Entertainment Organizer

**PEG-UX50
PEG-UX00**

CLIÉ™

© 2003 Sony Corporation

 **Bluetooth[®]**

 **MEMORY STICK**

The following manuals are included with your CLIÉ handheld.
Refer to the following together with this manual.

Before you start using your CLIÉ handheld (This manual)

Read This First (Operating Instructions)
Explains the following: <ul style="list-style-type: none">• Setting up your CLIÉ handheld and computer• Basic operations• What you can do with the applications For safety use, be sure to read the supplied “Safety & Regulations Guide”.

- ↓
- When you want to become more familiar with the basic operations of your CLIÉ handheld
 - When you want to change the settings of your CLIÉ handheld

Handbook
Using CLIÉ handheld for the first time The basic features and operations are explained in detail.
CLIÉ handheld advanced operations Useful and advanced features of your CLIÉ handheld are explained in detail.

- ↓
- When you want to become more familiar with using the supplied applications
 - When you want to install additional applications

CLIÉ Application Manual (HTML format: Read via a computer screen)
Explains how to use the supplied applications in detail. This manual will be automatically installed on your computer when you install Palm™ Desktop for CLIÉ. For details on using the manual, refer to “Using the CLIÉ Application Manual” on page 72 of this manual.

- When you have problems

Troubleshooting Q&A
Helps in solving common problems that you may have while using your CLIÉ handheld.

Before use

Caution

IN NO EVENT SHALL SONY BE LIABLE FOR ANY INCIDENTAL, INDIRECT OR CONSEQUENTIAL DAMAGES OR OTHER DAMAGES INCLUDING WITHOUT LIMITATION LOSS OF PROFITS, LOSS OF REVENUE, LOSS OF DATA, LOSS OF USE OF THE PRODUCT OR ANY ASSOCIATED EQUIPMENT, DOWNTIME, AND PURCHASER'S TIME RELATED TO OR ARISING OUT OF THE USE OF THIS PRODUCT, ITS HARDWARE AND/OR ITS SOFTWARE.

CAUTION

Please contact your nearest Sony dealer regarding any problems you have with your Sony product.

On the supplied software

- Copyright laws prohibit reproducing the software or the software manual in whole or in part or renting the software without the permission of the copyright holder.
- In no event will SONY be liable for any financial damage or loss of profits, including claims made by third parties, arising out of the use of the software supplied with this product.
- In the event a problem occurs with this software as a result of defective manufacturing, SONY will replace it at SONY's option or issue a refund. However, SONY bears no other responsibility.
- The software provided with this product cannot be used with equipment other than that which it is designated for use with.
- Please note that, due to continued efforts to improve quality, the software specifications may be changed without notice.
- The software library incorporated in the CLIE handheld is based in part on the work of the Independent JPEG Group.

NOTES

- Sony does not support third party add-on applications. If you have a problem with a third party application, please contact the developer or publisher of that software.
- The illustrations in this manual may differ from the actual software.
- Explanations in this manual assume that you are familiar with basic operations of Windows®. For how to use your computer and operating system, please refer to their respective manuals.

Program © 2003 Sony Corporation, © 2003 Palm, Inc., or its subsidiaries. All rights reserved.
Documentation © 2003 Sony Corporation

Table of Contents

Setting up your CLIÉ™ handheld

Confirming the package contents 6

Setting up your CLIÉ™ handheld 8

Charging your CLIÉ handheld 8

Performing the initial setup after turning on your CLIÉ handheld for the first time 9

Using your CLIÉ™ handheld with your computer 16

Installing the software on your computer . . . 16

Connecting your CLIÉ handheld and computer via the USB cable 19

Entering a user name for your CLIÉ handheld 20

Synchronizing data between your CLIÉ handheld and computer (the HotSync® operation) 21

Basic operations of your CLIÉ™ handheld

Turning on/off your CLIÉ handheld 24

Turning on your CLIÉ handheld 24

Starting an application 25

Using the Jog Dial™ navigator and the BACK button 25

Other ways to start an application 27

About Internal Media 28

Entering text. 29

Turning off your CLIÉ handheld in Power Saving mode 30

Turning off your CLIÉ handheld using Power Saving mode. 30

Restarting your CLIÉ handheld . . 32

Connecting to the Internet

Preparing for the wireless LAN function 35

Step 1: Verifying the value settings for the wireless LAN access point 36

Step 2: Using the check sheet 37

Step 3: Setting up the wireless LAN function 38

Browsing websites. 40

Setting up NetFront v3.0 for CLIE 40

Browsing websites by connecting to the Internet via the wireless LAN access point 42

Sending/Receiving e-mails 43

Setting up CLIE Mail 43

Sending e-mails 45

Receiving e-mails 46

Have a try

Enjoying image files 47

Enjoying movies 50

Recording a voice memo (Voice Recorder) 53

Viewing handwritten memos and image files, and playing back voice memos 55

Listening to music 57

Managing schedules (Date Book) 59

Managing addresses and telephone numbers (Address Book) 61

Exchanging Date Book and Address Book data between your CLIÉ handheld and computer 63

Viewing computer documents on your CLIÉ handheld (Picsel Viewer for CLIE) 64

Using the Bluetooth® function 66

Using applications. 72

Using the CLIÉ Application Manual 72

Introducing add-on applications 74

Additional information 85

Making a backup of the data or applications on your CLIÉ handheld	85
Resetting your CLIÉ handheld to the factory setting	86
Troubleshooting	87
Customer Support and Customer Registration	88
Notes on use	89
Specifications	93

CLIÉ™ handheld components

Front panel	98
Back panel	100
Locating the components of the initial screen	106
Locating Charger Cradle components	111
INDEX	112

Notes on this manual

- This manual supports PEG-UX50 and PEG-UX00.
 - The illustrations in this manual are for PEG-UX50, unless specified otherwise.
 - Differences between PEG-UX50 and PEG-UX00 are specified in each corresponding section.
- Screen shots in this manual may be different from the actual displays in the supplied software.
- The contents of this manual are written for users with a working knowledge of Windows®. For details about computer operations, refer to your computer manual.

LCD display and camera lens

The LCD of your CLIÉ handheld is designed with precision technology. However, in some cases, individual pixels may remain lit or may not light at all. Also, the brightness of the display may appear inconsistent, depending on the angle of view. Such anomalies are caused by the nature of the LCD and do not indicate a malfunction.

Please note that Sony does not guarantee a replacement or refund for such cases.

Do not expose the LCD or camera lens to direct sunlight for prolonged periods of time. It may result in a malfunction. Do not store in areas subject to sunlight, such as near windows, and be careful when using outdoors.

Before taking pictures (CLIE Camera), recording movies (Movie Recorder) or recording sounds (Voice Recorder)

SONY recommends taking a test picture to confirm settings, etc., before actual shooting. Take a test shot, save it, and view it to check the result. Likewise, perform tests before actual movie and sound clip recording.

No guarantee for lost or damaged data

Sony does not provide any guarantee for lost or damaged data.

Copyrights

Television programs, films, video tapes, and other materials may be copyrighted. Unauthorized recording of such materials may violate copyright laws.

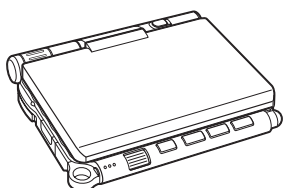
Setting up your CLIE™ handheld

This chapter explains how to charge your CLIE handheld and use it with your computer.

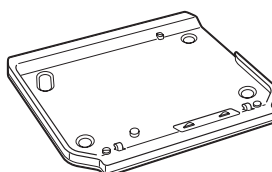
Confirming the package contents

Please confirm that all the following accessories are included in the package before setting up your CLIE handheld.

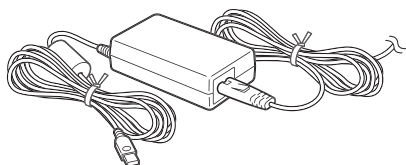
CLIE handheld (1)



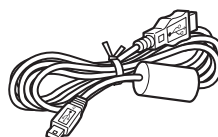
Charger Cradle (1)



AC power adapter (1) (including AC cord)



USB cable (1)

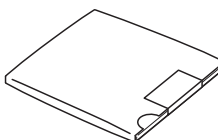


Stylus (1)



The stylus is inserted into your CLIE handheld at the factory.

Installation CD-ROM (1)



Strap (1)

Refer to the illustration below to attach the strap.

Read This First - Operating Instructions (1, this manual)

Safety & Regulations Guide (1)

Troubleshooting Q&A (1)

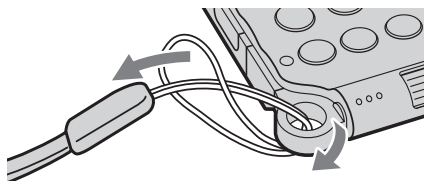
Software license agreement (1)

Other printed materials

Make sure that the package contains all of the above contents. If any item is missing, contact the Sony Customer Information Service Center or a Sony dealer.

Use the strap to avoid dropping your CLIÉ handheld

Attaching the strap



Setting up your CLIÉ™ handheld

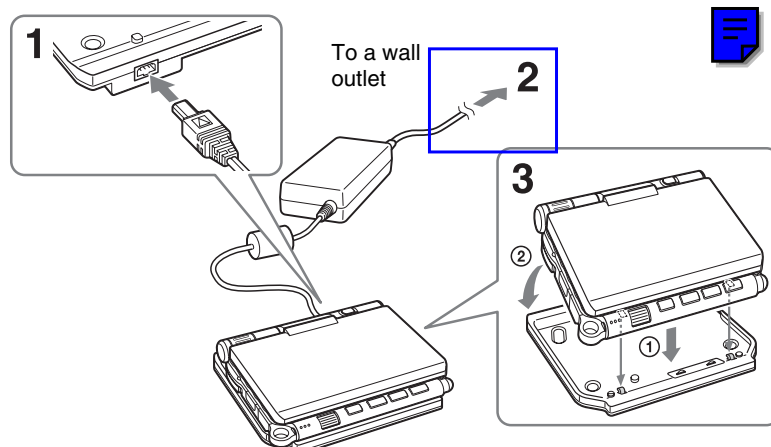
Perform the following before setting up your CLIÉ handheld.

Step 1: Charging your CLIÉ handheld

Step 2: Performing the initial setup after turning on your CLIÉ handheld for the first time

Step 1: Charging your CLIÉ handheld

Before using your CLIÉ handheld for the first time, be sure to fully charge the battery.



- 1** Connect the AC power adapter to the **charger cradle's** AC power adapter connector.
- 2** Connect the AC power adapter to a wall outlet.
- 3** Align and attach the front clasps of the **charger cradle** with the holes on the back of your CLIÉ handheld (①), then gently lay it down (②).

The POWER LED of your CLIÉ handheld turns on when charging starts.

Tips

- To remove your CLIÉ handheld from the **charger cradle**, lift up from the rear (camera lens side).
- Clean the connectors if they get dirty.

It takes about four hours to fully charge your CLIÉ handheld for the first time. The POWER LED turns off when charging is complete.

Tip

Subsequent charges will require less time if you charge your CLIÉ handheld frequently.

Step 2: Performing the initial setup after turning on your CLIÉ handheld for the first time

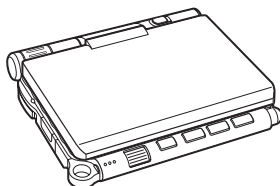
The first time you turn on your CLIÉ handheld, you need to make some initial settings. Follow the on-screen instructions to complete the initial setup and to become familiar with operating your CLIÉ handheld.

..... Changing the operating style

You can use your CLIÉ handheld with the display panel set in three different styles.

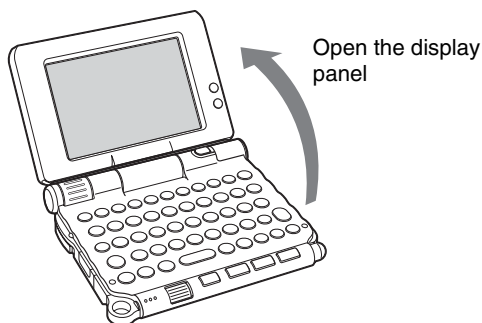
■ **Carrying style**

Put your CLIÉ handheld in the “carrying style” when carrying it in your bag or pocket to prevent the screen from damage.



■ **Opened style**

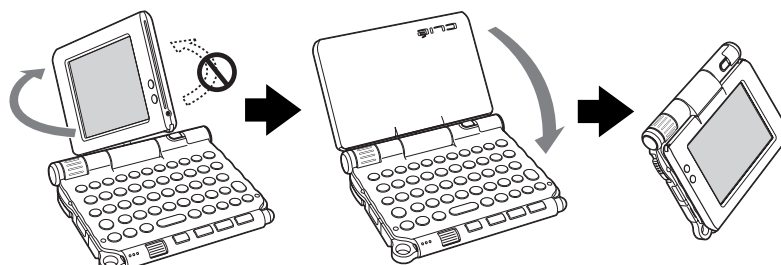
Put your CLIÉ handheld in the “opened style” when you enter data with the hardware keyboard.



Continued on next page

Turned style

Put your CLIÉ handheld in the “turned style” to make it compact when you operate it with the stylus or use it in camera mode.



Open the display and rotate it clockwise until it clicks into place

Fold the display over the keyboard

Note

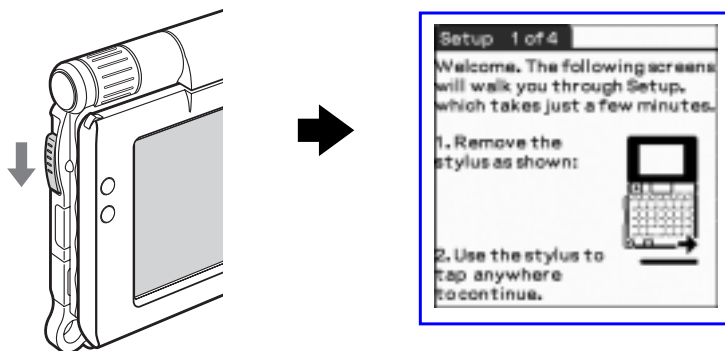
Do not apply too much force or rotate the display panel in the wrong direction.

Closing the display panel

Close the display panel by rotating it counterclockwise until it clicks into place.



- 1 Slide down the POWER/HOLD switch.
Your CLIE handheld turns on, and the **Setup** screen is displayed.



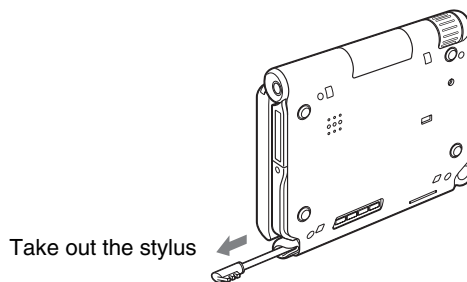
Slide down the POWER/HOLD switch

Tips

If you cannot turn on your CLIE handheld

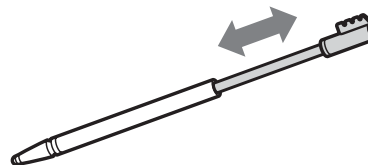
- Did you charge your CLIE handheld as described on page 8?
➔For details, refer to the supplied "Troubleshooting Q&A".
- Perform a soft reset if you cannot turn on your CLIE handheld even after charging it (page 32).

- 2 Take out the stylus.
You can use the stylus to enter text or to select applications.



Tip

You can extend or shorten the stylus, as shown in the illustration.



Continued on next page

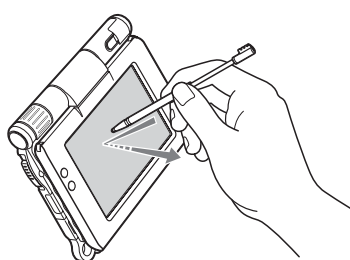
Notes

- Never use a writing pen, pencil, or other sharp object instead of the stylus to write on your CLIÉ handheld, as the screen may get scratched.
- When you put the stylus back in its holder, push it in until it clicks into place.

3 Press lightly on the screen with the stylus.

This action is called “tapping”.

The **Setup** screen for stylus digitizer is displayed.

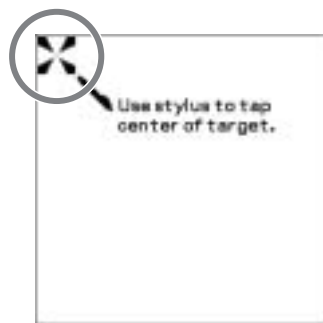


Press lightly on the screen (Tap)



4 Following the on-screen instructions, tap exactly in the center of the displayed mark.

Tap the next targets, which are displayed at the bottom right and then in the center of the screen.



Note

If the stylus digitizer is not configured correctly, the scroll bar may not operate properly, “tapping” may not work as expected, or other problems may occur.

- ➔ For details on reconfiguring the stylus digitizer, refer to “Customizing your CLIÉ™ handheld (Preferences): Adjusting the Digitizer” in the supplied “Handbook”.

After the stylus adjustment is complete, a screen for setting the time and date is displayed.

5 Tap the box next to [Set Time].
The **Set Time** dialog box is displayed.

Tip

You can reconfigure the date and time settings in the **Preferences** screen.

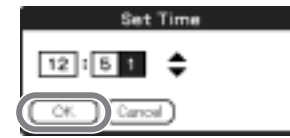
► For details, refer to “Customizing your CLIE™ handheld (Preferences): Setting up the Date & Time preferences” in the supplied “Handbook”.



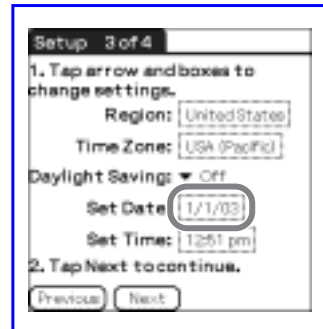
6 Tap ▲ or ▼ to set the current time.
Tap each box to set the hour and minute.



7 Tap [OK].
The current time is set and the **Setup** screen is displayed.



8 Tap the box next to [Set Date].
The **Set Date** screen is displayed.



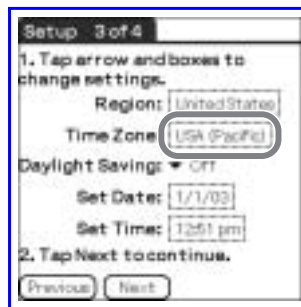
9 Tap ◀ or ▶ to select the current year.



Continued on next page

10 Tap the current month, then tap the current date.
The **Set Date** screen closes.

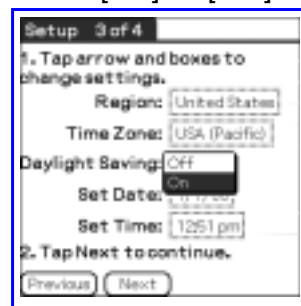
11 Tap the box next to [Time Zone].
The **Set Time Zone** screen is displayed.



12 Tap the region to set the time zone, then tap [OK].

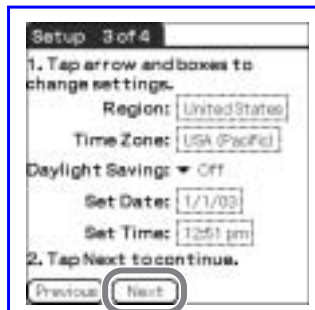


13 Tap ▼ next to [Daylight Saving] and select [On] or [Off].



14

14 Tap [Next].

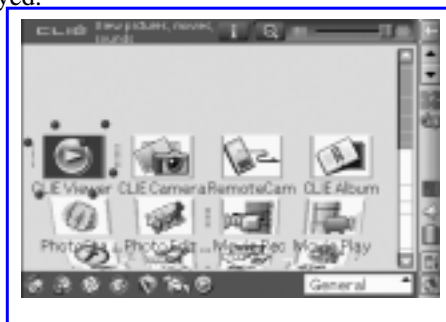


15 Tap [Next] and [Done].



Tip
 When you tap [Next] in the **Enter Data** screen, you can proceed to **Graffiti 2 Demo**.
 ➔ For details on **Graffiti 2 Demo**, refer to "Entering text on your CLIE™ handheld: Using Graffiti® 2 to enter text" in the supplied "Handbook".

The CLIE 3D Launcher is displayed.



The initial setup is complete.

Using your CLIÉ™ handheld with your computer

You can perform the following if you use your CLIÉ handheld with your computer.

- Synchronize the latest schedules and addresses between your CLIÉ handheld and your computer.
- Save a backup of your CLIÉ handheld data on your computer.
- Transfer images and music files from your computer to your CLIÉ handheld.
- Read the supplied “CLIÉ Application Manual” installed on your computer and learn how to use add-on applications in detail.

Follow the procedure below before using your CLIÉ handheld with your computer.

Step 1: Installing the software on your computer

Step 2: Connecting your CLIÉ handheld and computer via the USB cable

Step 3: Entering a user name for your CLIÉ handheld

Step 1: Installing the software on your computer

Do not connect your CLIÉ handheld to your computer before installing the software. Otherwise, the software may not be installed properly.

Palm™ Desktop for CLIÉ stored on the supplied Installation CD-ROM must be installed on your computer. The software is used for data transfer between your CLIÉ handheld and computer, and handling data on your computer such as **Address Book**.

- ➔ For details on the system requirements of computer, refer to “System requirements” on page 97.

Notes

- Do not simply copy the Palm™ Desktop for CLIÉ folder from the supplied Installation CD-ROM to your computer. To install the software properly, follow the installation procedure described below.
- If you use Windows 2000 Professional or Windows XP, log on with a User Name in the Administrators group before installing the software.



- If you have more than one CLIÉ handheld and the old version of **Palm™ Desktop for CLIÉ** has already been installed on your computer, follow the installation procedure below to overwrite the old version.
 - * If you are using PEG-N710C Series or PEG-S300 Series, refer to your CLIÉ handheld support website. (Refer to the URL shown on the back cover of this manual.)
 - ➔ For details, refer to “Transferring data from another CLIÉ™ handheld” in the supplied “Handbook”.

- 1** Quit all applications running on Windows®.
- 2** Insert the supplied Installation CD-ROM into the CD-ROM drive of your computer.
The Installation Launcher window is displayed.
- 3** Click [Install] for **Palm™ Desktop for CLIÉ**.
The setup program starts and the **InstallShield Wizard** window is displayed.
- 4** Click [Next].
The **Select Synchronization Application** window is displayed.
- 5** Select the software you will use to synchronize your CLIÉ handheld with your computer.
If you select [Synchronize with Palm Desktop for CLIÉ], **Intellisync Lite** will not be installed. If you select [Synchronize with Microsoft Outlook or Lotus Organizer], both **Palm™ Desktop for CLIÉ** and **Intellisync Lite** will be installed.
- 6** Click [Next].
The **Setup Type** window is displayed.
- 7** Select the setup type [Complete] or [Custom] and the destination folder if you select [Custom].
- 8** Click [Next].
The **Select User** window is displayed.

Continued on next page

9 Enter a user name in the **Select User** window.

You can enter any user name you prefer.

Note

If you have more than one CLIÉ handheld

Enter a user name that is different from the one you use for another CLIÉ handheld.

If you set an identical user name to multiple CLIÉ handhelds, errors may occur.

Tip

If you want to transfer data between CLIÉ handhelds

Refer to “Transferring data from another CLIÉ™ handheld” in the supplied “Handbook”.

10 Click [Next].

The **Connections** window is displayed.

11 Select [USB] or [Serial Port], depending on how you want to connect your CLIÉ handheld to your computer.

12 Click [Next].

The **Ready to Install the Program** window is displayed.

13 Click [Install].

Palm™ Desktop for CLIÉ installation starts.

14 Click [Finish].

Installation of Palm™ Desktop for CLIÉ on your computer is complete.

Step 2: Connecting your CLIÉ handheld and computer via the USB cable

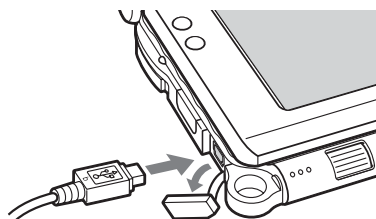
You can synchronize data between your CLIÉ handheld and computer via the supplied USB cable after installing **Palm™ Desktop for CLIÉ**.

About the USB cable

The supplied USB cable has two connectors. Connect the “A” plug to the USB port of your computer and the mini “B” plug to the USB connector of your CLIÉ handheld.

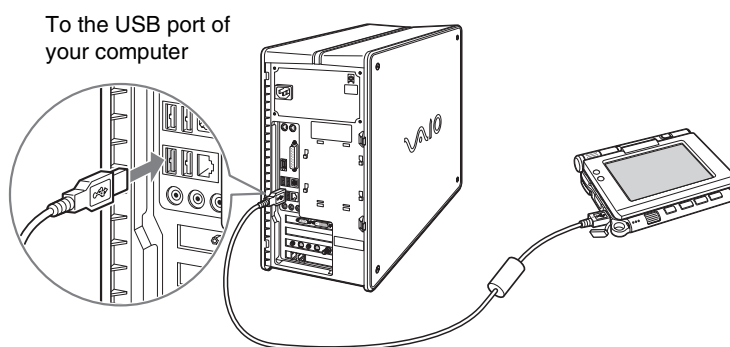


- 1 Connect the mini “B” plug of the USB cable to the USB connector of your CLIÉ handheld.



Open the USB connector cover


- 2 Connect the “A” plug of the USB cable to the USB port of your computer.




Note


Be sure to connect the USB cable directly to a USB port of your computer. If the USB cable is connected to a computer via another device, such as a USB hub, the HotSync® operation may not work properly.

Step 3: Entering a user name for your CLIÉ handheld

- 1** Rotate the Jog Dial™ navigator to select  (HotSync) on the CLIE 3D Launcher and press the Jog Dial™ navigator. The **HotSync** screen is displayed.

Tip

You can also tap  (HotSync) to display the **HotSync** screen.

- 2** Tap  (HotSync) in the **HotSync** screen.

The HotSync® operation starts and the installation for the required software starts automatically.

- 3** Click [OK] in the **Users** window of your computer.

A beep sounds and the HotSync® operation starts.

Your user name entered for **Palm™ Desktop for CLIÉ** is also registered in your CLIÉ handheld.

When the setup is complete, “HotSync operation complete.” will be displayed on your CLIÉ handheld.

- 4** Click [OK] on the computer window.

Setup is complete.

Synchronizing data between your CLIE handheld and computer (the HotSync® operation)


What is the HotSync® operation?

The HotSync® operation is a one-step operation that allows you to synchronize data between your CLIE handheld and your computer, back up the data of your CLIE handheld to your computer, and install add-on applications.


► For details, refer to “Exchanging and updating files/data using the HotSync® operation (Other HotSync® operations)” in the supplied “Handbook”.

Performing the HotSync® operation


The following procedure explains how to synchronize data between your CLIE handheld and computer, using **Date Book** as an example.

- 1 Turn on your computer.
- 2 Follow the procedure on page 59 and enter new schedule event in **Date Book**.
- 3 Connect your CLIE handheld and computer via the supplied USB cable.
- 4 Rotate the Jog Dial™ navigator to select  (HotSync) on the CLIE 3D Launcher and press the Jog Dial™ navigator. The **HotSync** screen is displayed.

Tip

You can also tap  (HotSync) to display the **HotSync** screen.

Continued on next page

5 Tap  (HotSync) in the **HotSync** screen.

The HotSync[®] operation starts.

When the HotSync[®] operation is complete, the following screen is displayed.



6 Double-click  (Palm Desktop for CLIÉ) on the Windows desktop.

Palm™ Desktop for CLIÉ starts and the Date Book window is displayed. If you select the same date you entered in Step 2, you will see that schedule.



Tip

You can also click [Start], select [Programs] (for Windows XP, select [All Programs])-[Sony handheld], and click [Palm Desktop for CLIÉ] to start the software.

To display other application windows (Address Book, To Do List, and Memo Pad)

Click any icon on the left side of the window.



Performing the HotSync® operation using the wireless LAN function

You can also synchronize data between your CLIE handheld and computer using the wireless LAN function.

- For details, refer to “Exchanging and updating files/data using the HotSync® operation (Other HotSync® operations): Performing the HotSync® operation via a wireless LAN network” in the supplied “Handbook”.

Making a backup is recommended

If problems occur, even those requiring a hard reset, you can restore your CLIE handheld to the same state as it was at the last HotSync® operation.

You may not be able to back up certain add-on applications installed after the initial setup or the data created with such add-on applications.

- For backup details, refer to “Making a backup of the data or applications on your CLIE handheld” on page 85.

Basic operations of your CLIÉ™ handheld

This chapter explains how to turn on/off your CLIÉ handheld, start an application, enter text, turn it off using Power Saving mode and perform a reset.

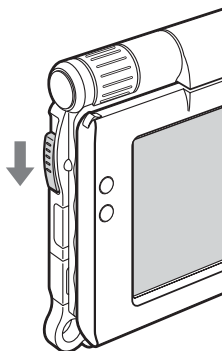


Turning on/off your CLIÉ handheld

Turning on your CLIÉ handheld

Slide down the POWER/HOLD switch.

Your CLIÉ handheld turns on, and the last screen you viewed is displayed.



Slide down the POWER/HOLD switch

Tip

If you cannot turn on your CLIÉ handheld

Did you fully charge your CLIÉ handheld?

➔ For details, refer to the supplied “Troubleshooting Q&A”.

Turning off your CLIÉ handheld

Slide down the POWER/HOLD switch again.

Tip

If you do not use your CLIÉ handheld for long periods of time, you can save the battery power using Power Saving mode.

➔ For details on Power Saving mode, refer to “Turning off your CLIÉ handheld using Power Saving mode” on page 30.

Starting an application

To work with your CLIÉ handheld, you need to start an application.

The following explains how to start an application.

- ❶ Displaying the CLIE 3D Launcher
- ❷ Selecting an application
- ❸ Quitting the application

The following shows how to start applications from the CLIE 3D Launcher using the Jog Dial™ navigator.

Using the Jog Dial™ navigator and the BACK button

❶ Displaying the CLIE 3D Launcher

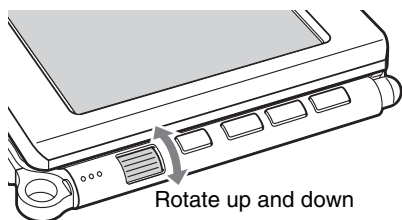
- 1 Tap  (Home).
The CLIE 3D Launcher is displayed.



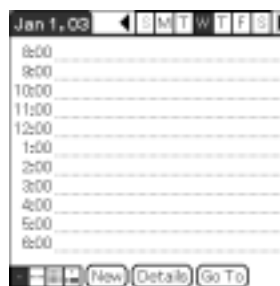
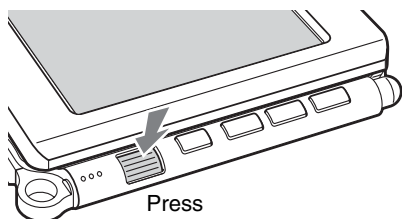
Continued on next page

2 Selecting an application

- 1 Rotate the Jog Dial™ navigator to select an application to start.
An application is selected.





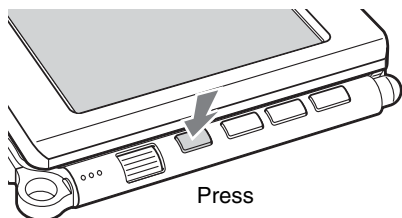
- 2 Press the Jog Dial™ navigator.
The selected application starts.



Tip

To select an application easily

If you press the BACK button while the CLIE 3D Launcher is displayed,  (Selector) moves to the scroll bar on the right. You can then scroll to the row of the application icons by rotating the Jog Dial™ navigator. Press the Jog Dial™ navigator again to move  (Selector) back to the desired application icon.



3 Quitting the application

You do not need to save data manually on your CLIE handheld as you do on a computer, although some applications need to be saved.

➔ For details, refer to the “CLIE Application Manual” installed on your computer. To switch from one application to another, you need to display the CLIE 3D Launcher again. You can use either of the following methods to display the CLIE 3D Launcher.

■ **Return to the CLIE 3D Launcher by tapping  (Home).**

■ **Return to the CLIE 3D Launcher by pressing and holding the **BACK** button.**

Tip



You can also switch from one to another application by pressing the Application buttons (page 29).

Other ways to start an application

You can also start an application using the stylus or application buttons.

Using the stylus

Start the application by pressing the screen directly with the supplied stylus.

1 Tap   on the CLIE 3D Launcher to display the application you want to start.



Continued on next page

- 2 Tap the application icon.
The selected application starts.



Pressing the application buttons



You can also start the applications by pressing the application buttons. The default setting of the application buttons are:

- NetFront**, **CLIE Mail**, **Date Book** for PEG-UX50
- Date Book**, **Address Book**, **Memo pad** for PEG-UX00

for PEG-UX50

for PEG-UX00

Tips

- Even when your CLIÉ handheld is off, you can start an application by pressing one of the application buttons.
- You can assign your favorite applications to the application buttons.
 - ➔ For details, refer to “Customizing your CLIÉ™ handheld (Preferences): Assigning applications to application buttons” in the supplied “Handbook”.

About Internal Media

Your CLIÉ handheld is built with a storage area of memory, called “Internal Media”. Internal media is an extended storage area which is different from the main storage area of your CLIÉ handheld and data stored on Internal media will not be deleted even if the battery power is gone.

➔ For details on Internal media, refer to “Using storage media such as “Memory Stick™” media” in the supplied “Handbook”.

Entering text

There are five ways to enter text into your CLIÉ handheld. You can use whichever is the most comfortable for you.

● Hardware keyboard (page 103)

You can enter text using the hardware keyboard in the same way as your computer's keyboard. This is useful when you want to enter lots of text.

● Handwriting system

There are two ways of using the handwriting system.

- ➔ For details, refer to "Entering text on your CLIÉ™ handheld" in the supplied "Handbook".

Graffiti® 2

You can enter text using a stroke recognition program, **Graffiti® 2**.

Decuma Input

You can enter text using **Decuma Input**, which converts your handwriting into typed text as you write.

● On-screen keyboard

You can enter text by tapping the on-screen keyboard.

- ➔ For details, refer to "Entering text on your CLIÉ™ handheld: Using the on-screen keyboard to enter text" in the supplied "Handbook".

● The HotSync® operation with a computer

You can enter text using your computer keyboard and then performing the HotSync® operation. The text data is transferred from your computer to your CLIÉ handheld using **Palm™ Desktop for CLIÉ**.

- ➔ For details, refer to [Help] in **Palm™ Desktop for CLIÉ**.



Turning off your CLIÉ handheld using Power Saving mode

To use your CLIÉ handheld over an extended period of time, you can save the battery power of your CLIÉ handheld by using Power Saving mode when turning off your CLIÉ handheld. Normally, the battery power is consumed even when your CLIÉ handheld is turned off so that data will not be lost. However, in Power Saving mode, data is stored on a storage area that requires no power, thus prolonging battery life.

Notes

- Turning on/off your CLIÉ handheld in Power Saving mode requires a bit more time than usual.
- Never press the RESET button while Power Saving mode is saving or restoring data.

Turning off your CLIÉ handheld (Power Saving mode)

- 1 Select  (Prefs) in the CLIE 3D Launcher to start **Preferences**.
The **Preferences** screen is displayed.
- 2 Tap  at the top right of the screen and select [Power Saving].
The Power Saving screen is displayed.
- 3 Tap [Turn Off].
The **Turn off** dialog box is displayed.




Continued on next page

4 Tap [Yes].

The data of your CLIE handheld is saved in Power Saving mode.
The data will be automatically restored next time you turn on your CLIE handheld.

To erase the saved data

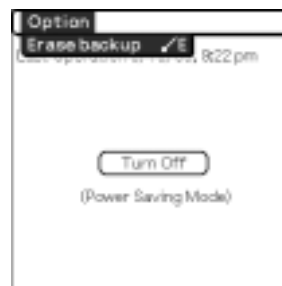
1 Tap  at the top right of the **Preferences** screen and select [Power Saving].

The Power Saving screen is displayed.

2 Tap  (Menu).

The menu is displayed.

3 Select [Erase backup] from [Option].



The **Erase Backup** dialog box is displayed.

4 Tap [Yes].



The saved data is erased.

Restarting your CLIÉ handheld

Normally, you do not need to reset your CLIÉ handheld. However, if your CLIÉ handheld does not turn on or respond, performing a soft reset may solve the problem.

To reset your CLIÉ handheld, follow the procedure below.

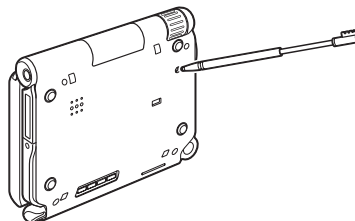
..... Performing a soft reset

All records and add-on applications stored on your CLIÉ handheld are retained even after performing a soft reset.

Gently press the RESET button with the stylus.

The system shuts down and your CLIÉ handheld restarts.

After restarting, it displays “palm POWERED”, “SONY” and “CLIÉ”, followed by the **Preferences** screen for setting up the time and date.



Notes

- After the RESET button is pressed, it takes a while before the **Preferences** screen is displayed. Do not press the RESET button again while resetting.
- Do not press the RESET button with anything other than the stylus. It may cause a malfunction.

Performing a hard reset

If the soft reset does not solve the problem, you will need to perform a hard reset to restart your CLIE handheld.

Notes

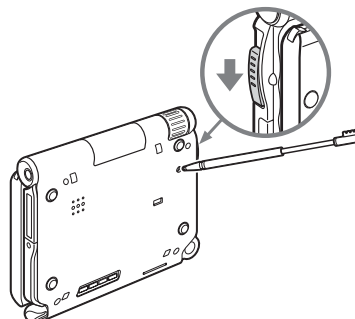


- **All records and add-on applications stored on your CLIE handheld will be erased by performing a hard reset.** (All records and add-on applications stored on Internal media will be retained.)
- Perform a hard reset only if a soft reset does not solve the problem. However, you can restore your CLIE handheld data if it was saved in Power Saving mode (page 30). You can also restore it if you have made a backup on your computer via the HotSync[®] operation.

- 1 Slide down and hold the POWER/HOLD switch.
- 2 Press the RESET button gently with the stylus, and then release the stylus.

Note

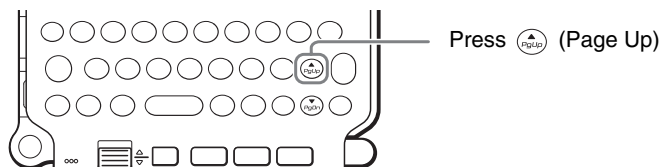
Keep the POWER/HOLD switch held down.




- 3 Wait more than three seconds after the palm POWERED screen is displayed, and release the POWER/HOLD switch. A message, "Erase all data?" is displayed.

Continued on next page

4 Press (Page Up) on the hardware keyboard.



Tip

If you want to cancel the hard reset, press any key other than  (Page Up).

The **Backup data** dialog box is displayed.

5 Tap [No] after verifying the backup data.



The hard reset is performed.

(All records and add-on applications stored on Internal media will be retained.)


Tip

When you tap [Yes], the last data you saved will be restored on your CLIÉ handheld.

After restarting, your CLIÉ handheld displays “palm POWERED”, “SONY” and “CLIÉ”, followed by the **SETUP** screen. Refer to “Step 2: Performing the initial setup after turning on your CLIÉ handheld for the first time” on page 9 for the initial setup.

After a hard reset, only the current date and time are retained. Formats, Preferences, and other controls revert to the factory settings.

Notes

- After the RESET button is pressed, it takes a while before the **Setup** screen is displayed. Do not press the RESET button again while resetting.
- If  (Page Up) is not pressed long enough, the hard reset may not be performed.

Connecting to the Internet

This chapter explains how to connect to the Internet using the wireless LAN function.

Note

The wireless LAN function is only available for PEG-UX50.

You can also access the Internet using the Bluetooth[®] function.

- ➔ For details on using the Bluetooth[®] function, refer to “Using the Bluetooth[®] function: Connecting to the Internet by communicating with a Bluetooth compatible mobile phone” in the supplied “Handbook”.

Your CLIÉ handheld is built with a wireless LAN function that complies with IEEE802.11b. You can access the Internet via a wireless LAN access point using the wireless LAN function.

Note

To connect to the Internet via a wireless LAN access point, you need to be a subscriber to a telecommunications company and an Internet Service Provider (ISP) in advance.

Preparing for the wireless LAN function

You need to prepare for the wireless LAN function in order to connect to the Internet. Follow the procedure on the following pages to use the wireless LAN function.

Continued on next page

Step 1: Verifying the value settings for the wireless LAN access point (Page 36)

To connect to the Internet using the wireless LAN function, verify the value settings for the wireless LAN access point.

Step 2: Using the check sheet (Page 37)

Use the check sheet to record the value settings provided by your System Administrator and Internet Service Provider (ISP). For more information you need, ask your System Administrator or Internet Service Provider.

Step 3: Setting up the wireless LAN function (Page 38)

You need to set up the wireless LAN function of your CLIÉ handheld, referring to the check sheet with the value settings.

Step 1: Verifying the value settings for the wireless LAN access point

To connect to the Internet using the wireless LAN function of your CLIÉ handheld, you need the value settings below for the wireless LAN access point.

- SSID (also called ESSID or Network Name.)
- WEP key (also called Encryption.)

You may need a user ID or password depending on your wireless LAN access point.

For details, ask the System Administrator of your wireless LAN network.

Tip

WEP key is a security function that encrypts transferred data.

Note

Your CLIÉ handheld uses the channels 1-11 (2.4GHz band of frequencies). If the wireless LAN access point uses channels 12-14, you cannot communicate using the wireless LAN function of your CLIÉ handheld.

Step 2: Using the check sheet

You can enter the value settings for the wireless LAN access point in this check sheet. The value settings you enter will be needed in “Setting up the wireless LAN function” (Page 38), “Setting up NetFront v3.0 for CLIE” (Page 40), and “Setting up CLIE Mail” (Page 43).

Tip

When you select [DHCP], you do not need the value settings for ③ Primary DNS, ④ Secondary DNS, ⑤ IP address, ⑥ Netmask, and ⑦ Router.

Check Sheet




Requirement setting	Your value setting
① SSID	
② WEP Key	
③ Primary DNS	. . .
④ Secondary DNS	. . .
⑤ IP Address	. . .
⑥ Netmask	. . .
⑦ Router	. . .
When using proxy server	
⑧ Address for proxy server (or Host name) Proxy port number	
⑨ Mail address	@
⑩ Incoming mail server (POP3)	
⑪ Outgoing mail server (SMTP)	
⑫ Mail account name	
⑬ Mail password (POP account password)	

Note

Ask the System Administrator of your wireless LAN network for value settings to connect to the wireless LAN access point, and ask your Internet Service Provider (ISP) for value settings to connect to the Internet.


Step 3: Setting up the wireless LAN function

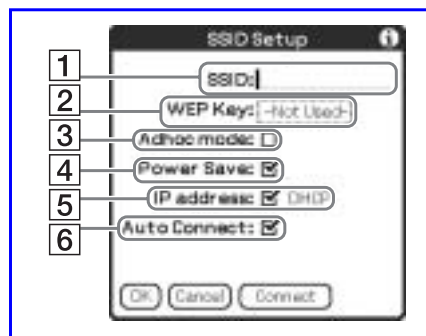
You need to set up the wireless LAN function, referring to the value settings you recorded on the check sheet.

- 1 Tap  (Prefs) in the CLIE 3D Launcher to start **Preferences**, then tap  at the top right of the screen and [Network].
The Network screen is displayed.
- 2 Tap  next to [Service], then tap [Wireless LAN] and [Details...].



The **Wireless LAN Setup** screen is displayed.

- 3 Tap  (Menu).
The menu is displayed.
- 4 Tap [New...] from [SSID].
The **SSID Setup** screen is displayed.
- 5 Enter the value settings for the wireless LAN access point, referring to the check sheet.



1 SSID

Enter the value setting for **1** SSID on the check sheet.

Note

Alphabet input is case sensitive.

2 WEP Key

Enter the value setting for **2** WEP Key on the check sheet.

3 Adhoc mode

You can communicate with other wireless LAN compatible devices without connecting to the wireless LAN access point when [Adhoc mode] is selected.

4 Power Save

You can enable the power saving function when [Power Save] is selected.

Note


You cannot select [Power Save], when [Adhoc mode] is selected.

Tip

You can disable the power saving function for the maximum battery power when the communication reception of the wireless LAN is low. However, the battery power is quickly consumed.

Select [Power Save] for normal use.

5 IP address

Tap  next to [IP address] to disable [DHCP], and you can enter the value settings for **3** Primary DNS, **4** Secondary DNS, **5** IP Address, **6** Netmask, and **7** Router in the following **IP Address** screen.

6 Auto Connect

When [Auto Connect] is selected, your CLIÉ handheld automatically connects to the wireless LAN access point when you access it.

6 Tap [OK].

The **Wireless LAN Setup** screen is displayed.

**7** Tap [OK].

The **Preferences** screen is displayed.

Browsing websites



You can access the Internet via the wireless LAN access point using **NetFront v3.0 for CLIE**.

Setting up NetFront v3.0 for CLIE

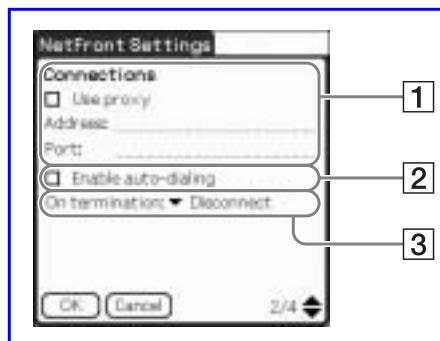
- 1 Select  (NetFront 3.0) in the CLIE 3D Launcher to start **NetFront v3.0 for CLIE**.

The browser screen is displayed.



- 2 Tap  (Menu) and [NetFront Settings] from [Options].
The first page of the **NetFront Settings** screen is displayed.
- 3 Tap  at the bottom right of the screen to display the second page of the **NetFront Settings** screen.
The **NetFront Settings** screen for [Connections] is displayed.

4 Set up the connection method.



1 Use proxy

This setting is not needed for normal use.

If your Internet Service Provider (ISP) provides you with proxy server address, select [Use proxy] and enter the proxy server address (or host name) and proxy port number.

2 Enable auto-dialing

You can access the Internet automatically without displaying the **Prompt** dialog box when [Enable auto-dialing] is selected.

3 On termination

You can select how **NetFront v3.0 for CLIE closes**.

[Never Disconnect]: keeps your connection to the Internet open for use with other applications.

[Disconnect]: disconnects from the Internet when **NetFront** closes or another application is started.

[Prompt]: displays the **Prompt** dialog box, whether you want to disconnect or stay connected.

5 Tap [OK].


The browser screen is displayed.

6 Tap (Menu) and [Preferences] from [Options].

The Network screen of **Preferences** is displayed.

7 Verify that [Wireless LAN] is selected next to [Service].

Tip


If [Wireless LAN] is not selected, tap  next to [Service] to select it.

8 Tap [Done].

The browser screen is displayed.

Setting up NetFront v3.0 for CLIE is complete.

Browsing websites by connecting to the Internet via the wireless LAN access point.

- 1 Select  (NetFront 3.0) in the CLIE 3D Launcher to start **NetFront v3.0 for CLIE**.

The browser screen is displayed.


- 2 Tap  (Off line) .

The **Prompt** dialog box is displayed.

Tip

When [Enable auto-dialing] is selected in the second page of the **NetFront Settings** screen, the connection automatically starts.

- 3 Tap [OK].

When your CLIE handheld is connected to the Internet,  (On line) is displayed.

Tips

- The Wireless LAN LED of your CLIE handheld lights.
- You can check the reception level for the wireless LAN on the status bar (Page 109).


Browsing a website

- 1 On the browser screen, tap  (Menu) and [Enter Address] from [Open].

The **Enter Address** screen is displayed.

- 2 Enter the URL for the website you want to view.


Tip


You can use shortcut entries by tapping  next to [Assistant].

- 3 Tap [OK].

The website page you entered is displayed.

..... Disconnecting the connection

Tap  (On line) in the browser screen to disconnect the connection.


 (Off line) is displayed when your CLIE handheld is disconnected from the Internet.

➔ For details on the Internet connection, refer to “Internet/E-mail” in the “CLIE Application Manual” installed on your computer.


Sending/Receiving e-mails

You can send/receive e-mails using **CLIE Mail**.


Setting up CLIE Mail

- 1 Select  (CLIE Mail) in the CLIE 3D Launcher to start **CLIE Mail**.
The **CLIE Mail** screen is displayed.




- 2 Tap  (Menu) and [Accounts] from [Options].
The **Accounts** screen is displayed.
- 3 Tap [New].
The **New Account** screen for [Name] is displayed.
- 4 Enter your display name when you send e-mails and tap [Next].
The **New Account** screen for [E-mail address] is displayed.

Connecting to the Internet

- 5** Enter **9** Mail address on the check sheet, then tap [Next].
The **New Account** screen for [E-mail Server Names] is displayed.
- 6** Enter **10** Incoming mail server (POP3) and **11** Outgoing mail server (SMTP) on the check sheet, then tap [Next].
The **New Account** screen for [Internet Mail Logon] is displayed.
- 7** Enter **12** Mail account name and **13** Mail password, and tap [Next].
The **New Account** screen for [Congratulations] is displayed.
- 8** Tap [Finish].
The **Accounts** screen is displayed.
- 9** Tap [OK].
The **CLIE Mail** screen is displayed.
- 10** Tap  (Menu) and [Networks] from [Options].
The Network screen of **Preferences** is displayed.
- 11** Verify that [Wireless LAN] is selected next to [Service].

Tip



If [Wireless LAN] is not selected, tap  next to [Service] to select it.

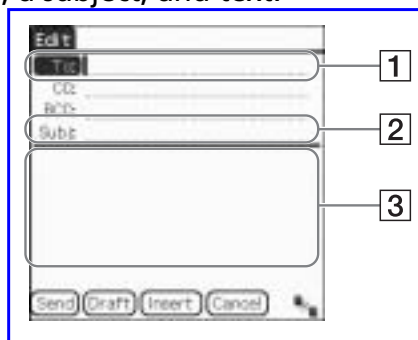
- 12** Tap [Done].
The **CLIE Mail** screen is displayed.

Setting up CLIE Mail is complete.

Sending e-mails

You can send e-mails with **CLIE Mail**.


- 1** Select  (CLIE Mail) in the CLIE 3D Launcher to start **CLIE Mail**.
The **CLIE Mail** screen is displayed.
- 2** Tap  (New).
The **Edit** screen is displayed.
- 3** Enter the e-mail address of receiver, a subject, and text.





Connecting to the Internet

- 1 [To:]**
Enter the mail address of the receiver.
- 2 [Subj:]**
Enter a subject for the e-mail.
- 3 Enter the e-mail text.**
- 4** Tap [Send] and [Send Now].
After connecting to the Internet, the **Communication Status** screen is displayed and the e-mail is sent.

Tip

When you tap [Send Later], the e-mail is temporarily saved in [Outbox].
The saved e-mail will be sent when you tap  (Send).

- 5** Tap [OK].
The **CLIE Mail** screen is displayed.
- 6** Tap  (On line).
 (Off line) is displayed when disconnected.