

FM/AM RADIO with Bluetooth SPEAKER

Operating Instructions



©2016 Sony Corporation Printed in China

http://www.sony.net/

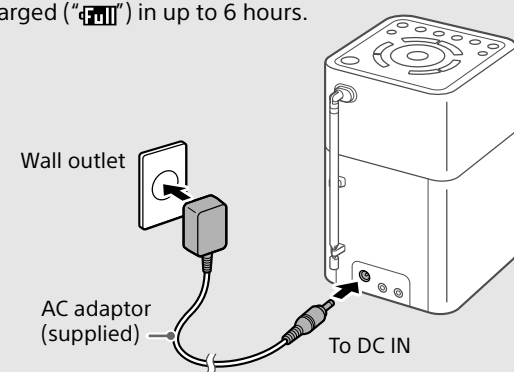
SRF-VIBT

Getting Started

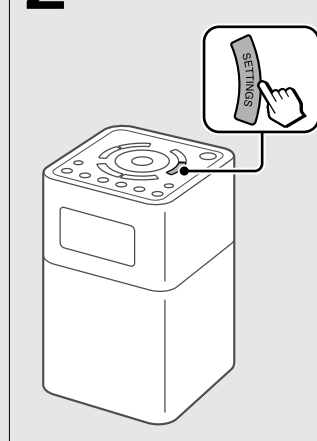
When using the unit for the first time, make sure to connect the unit to a wall outlet using the AC adaptor (supplied). Otherwise the unit will not turn on.

1 Connect the unit to a wall outlet and charge the unit.

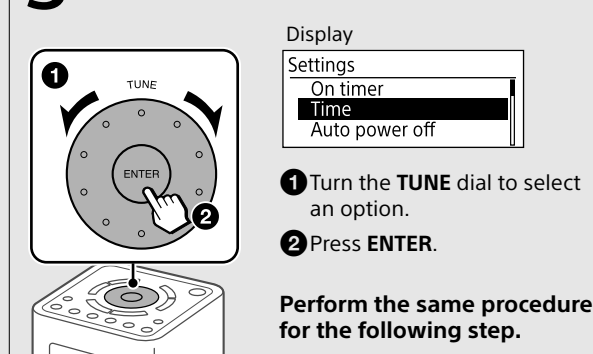
The built-in battery will be fully charged (100%) in up to 6 hours.



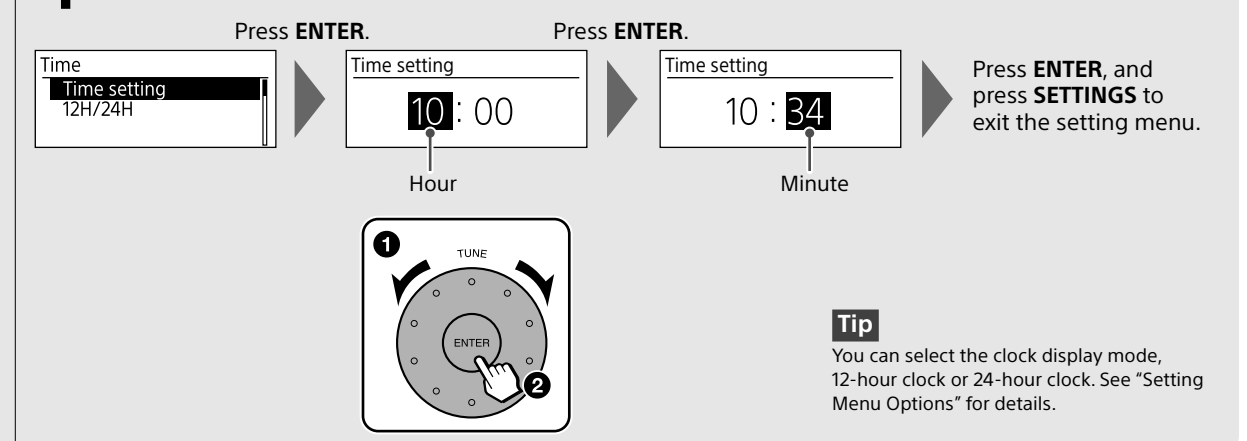
2 Press **SETTINGS**.



3 Select "Time."



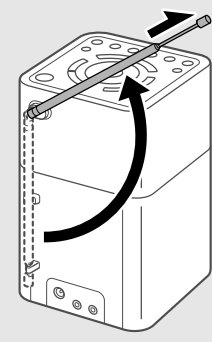
4 Set the hour and minute.



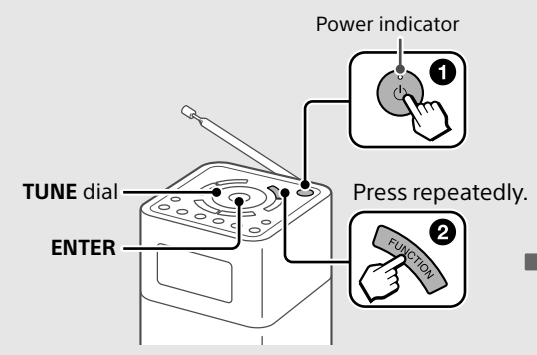
Tip You can select the clock display mode, 12-hour clock or 24-hour clock. See "Setting Menu Options" for details.

Listening to the Radio

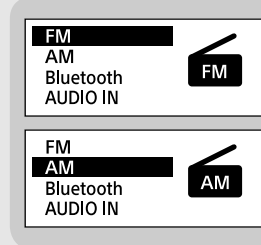
1 Extend the antenna for FM radio reception.



2 Turn on the unit, and select the "FM" or "AM" function.



Tip The power indicator lights up in green while the unit is turned on. To set the unit to standby mode, press **ENTER** again.

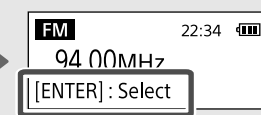
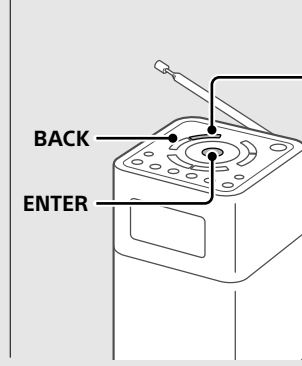


Tip After pressing **FUNCTION** once, you can also select a function by turning the **TUNE** dial and pressing **ENTER**.

The unit automatically switches to the selected function in about 2 seconds.

3 Select a desired station.

Scan tuning
Press **SCAN** to start scanning stations.

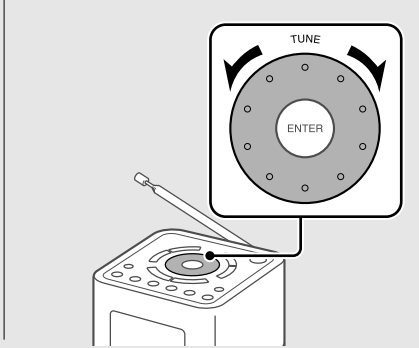


If a receivable station is found, "[ENTER]:Select" appears on the display. Press **ENTER** to receive the station. (If you do not press **ENTER** within 3 seconds, the search will restart.)

Press **ENTER**.

Tips
• To stop the scanning, press **BACK**.
• To change the scanning direction, turn the **TUNE** dial clockwise or counterclockwise.

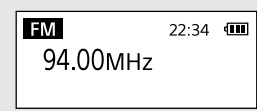
Manual tuning
You can manually tune to the desired frequency.



Presetting stations (5 FM and 5 AM)

1 Tune to the station you want to preset.

Follow the steps in "Listening to the Radio" above.



2 Press and hold the desired preset button (1-5) until "Stored to [PRESET x]" appears on the display.



Tips
• If you try to store another station with the same preset number, the previously stored station will be replaced.
• The preset button 3 on the unit has a tactile dot. Use the tactile dot as a reference when operating the unit.

Listening to a preset station

1 Select the "FM" or "AM" function.

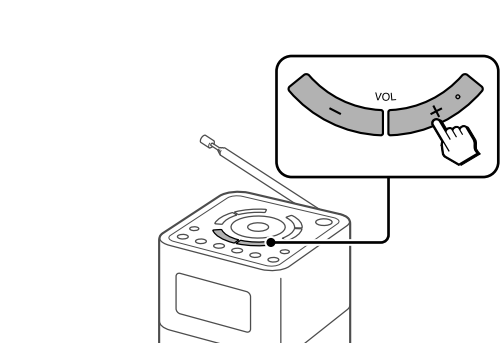


2 Select the desired preset station.



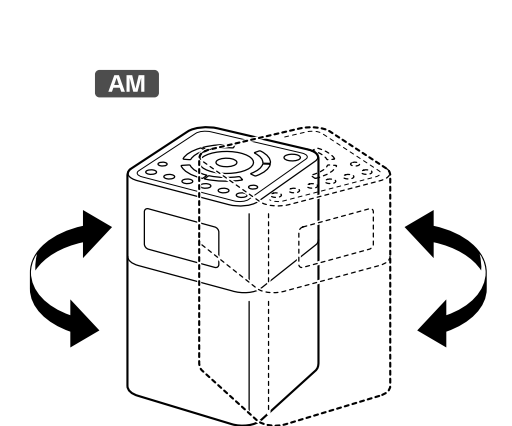
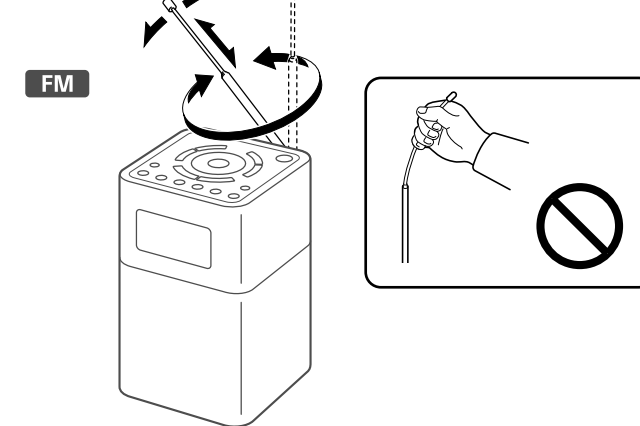
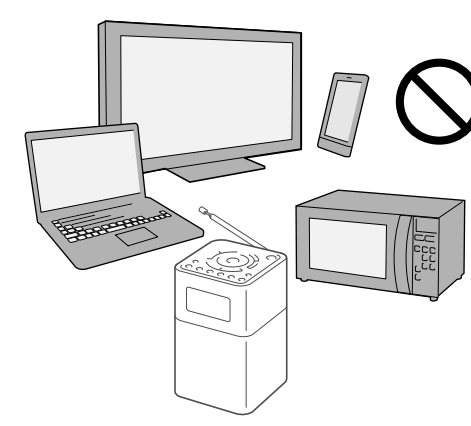
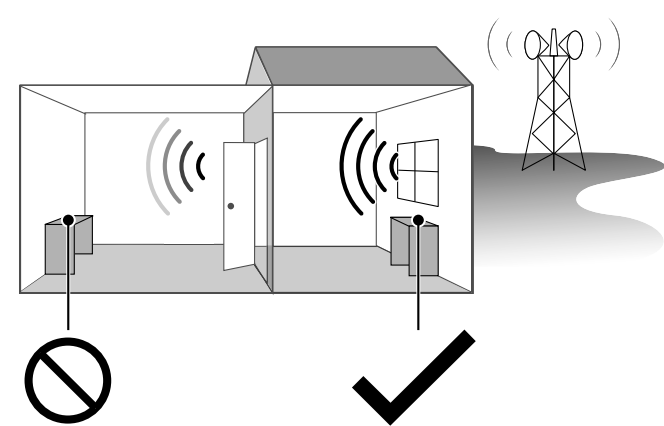
Note To prevent the preset from being changed by mistake, do not hold down the preset button.

To adjust the volume



Tips
• The last set volume is stored in the unit's memory.
• **VOL** on the unit has a tactile dot. Use the tactile dot as a reference when operating the unit.

To improve FM/AM radio reception

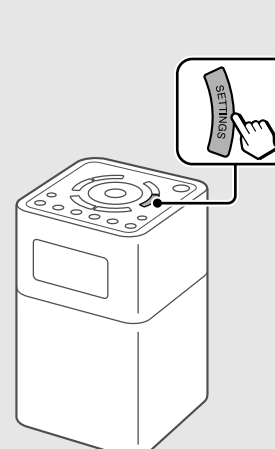


Setting the On Timer

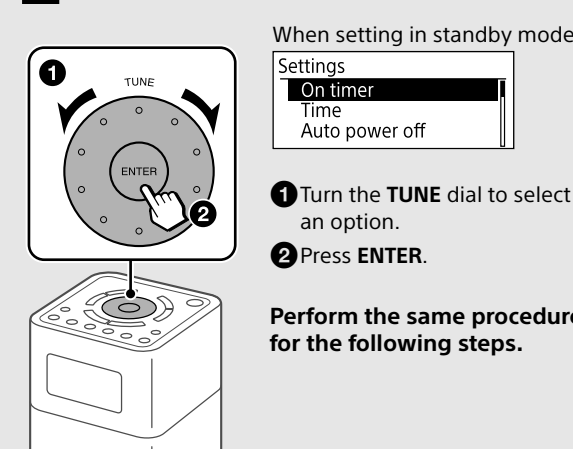
You can set the unit to turn on the radio automatically at the set time.

First set the clock. See "Getting Started" for details.

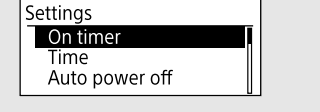
1 Press **SETTINGS**.



2 Select "On timer."



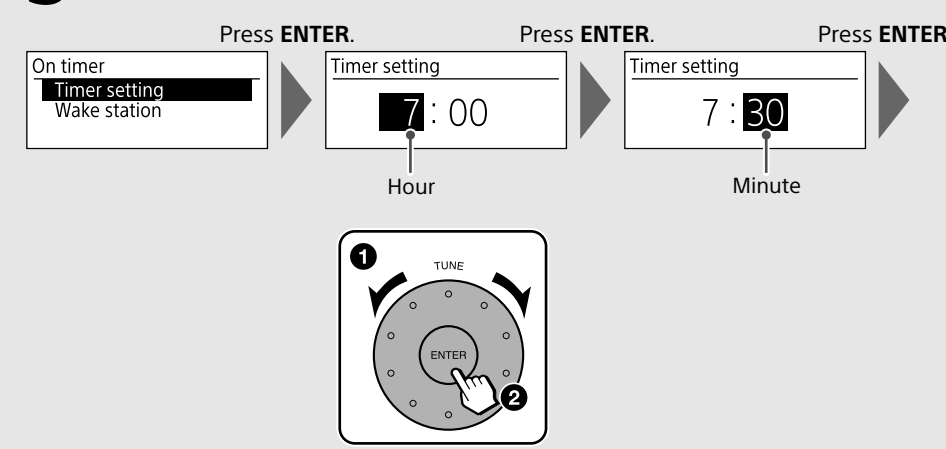
When setting in standby mode



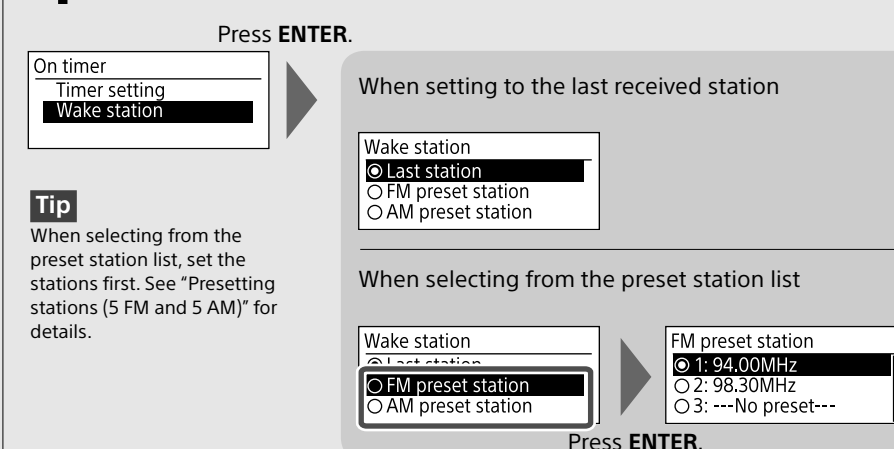
1 Turn the **TUNE** dial to select an option.
2 Press **ENTER**.

Perform the same procedure for the following steps.

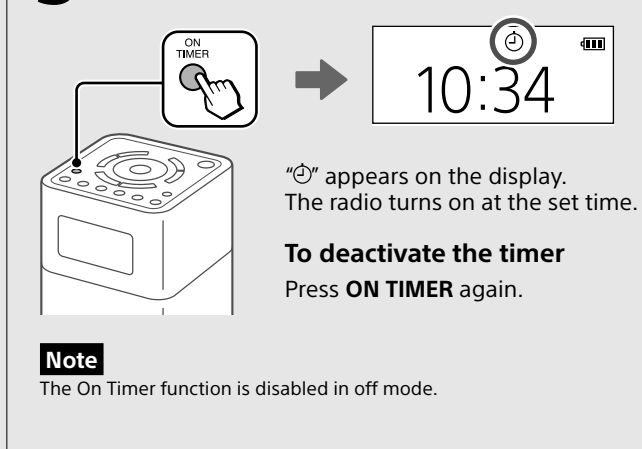
3 Set the hour and minute.



4 Set the station received at the set time.



5 Activate the timer.



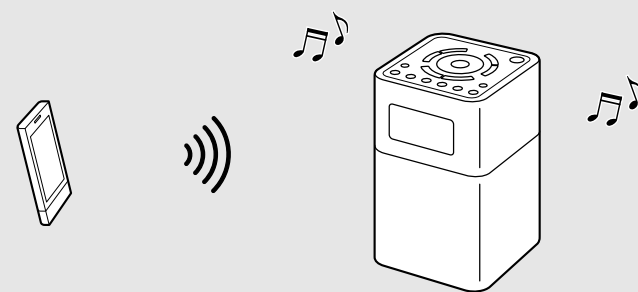
* appears on the display. The radio turns on at the set time.

To deactivate the timer
Press **ON TIMER** again.

Note The On Timer function is disabled in off mode.

Listening to Music from a BLUETOOTH Device

Using the BLUETOOTH connection, you can listen to music from wirelessly connected BLUETOOTH devices such as smartphones, tablets, PCs, etc.



Tip BLUETOOTH wireless technology operates within a range of about 10 m.

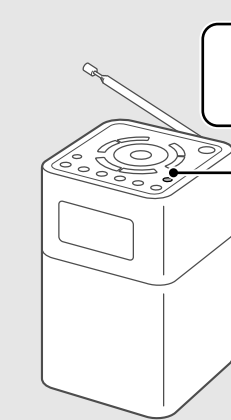
Compatible BLUETOOTH devices
Compatibility requirements for the devices are as follows. Before using a device with this unit, check that it meets the requirements.

- Devices must support A2DP (Advanced Audio Distribution Profile) and AVRCP (Audio/Video Remote Control Profile).
- NFC capability (required only when using the NFC pairing function of the unit).

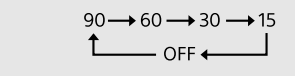
About the BLUETOOTH standby mode
The BLUETOOTH standby mode enables the unit to turn on automatically by making a BLUETOOTH connection from a BLUETOOTH device.

See "Setting Menu Options" for details.

Setting the Sleep Timer



Press **SLEEP** repeatedly to select the desired time (in minutes).



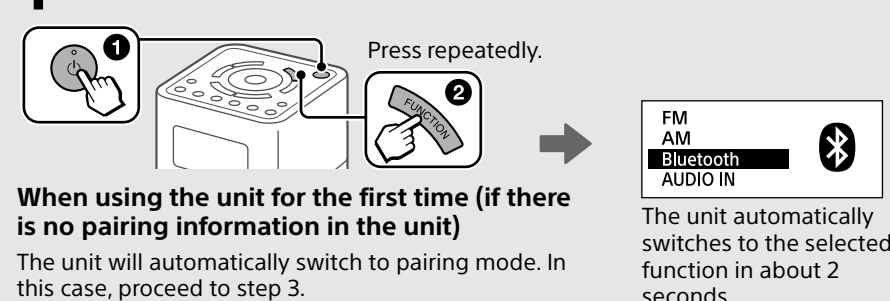
When the sleep timer is set, "SLEEP" appears on the display. The unit enters standby mode automatically after a set time has elapsed.

Tips
• The last set time is stored in the unit's memory.
• You can check the time left until the unit enters standby mode by pressing **SLEEP** again after setting the sleep timer.

Connecting with a BLUETOOTH device

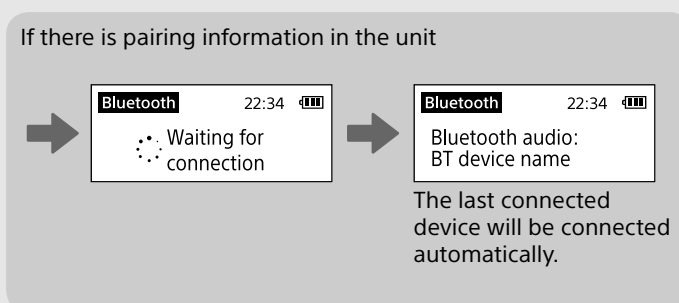
If your BLUETOOTH device has an NFC function, this procedure is unnecessary. See "Connecting by One-touch (NFC)" below.

1 Turn on the unit, and select the "Bluetooth" function.

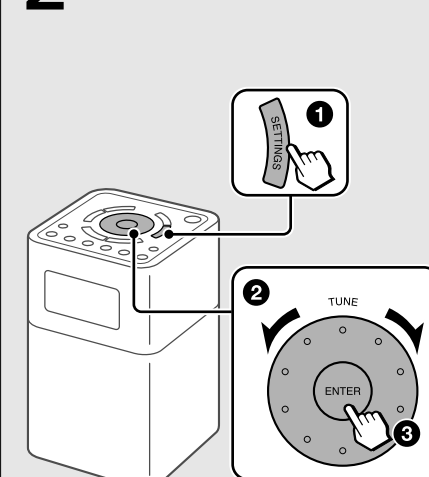


When using the unit for the first time (if there is no pairing information in the unit)
The unit will automatically switch to pairing mode. In this case, proceed to step 3.

When connecting with the second and subsequent devices
Proceed to step 2.



2 Select "Bluetooth pairing."

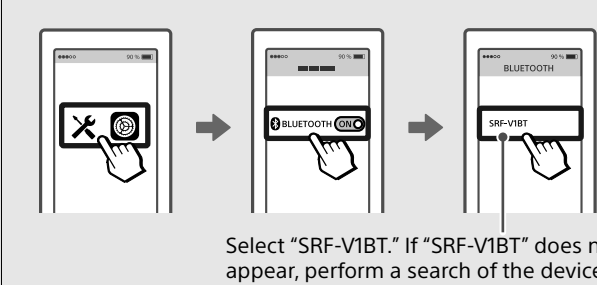


Settings
Bluetooth pairing
Bluetooth standby
On timer

1 Press **SETTINGS**.
2 Turn the **TUNE** dial to select an option.
3 Press **ENTER**.

"Waiting for pairing" appears on the display.

3 On the BLUETOOTH device, activate the BLUETOOTH function and perform the pairing procedure.



Select "SRF-VIBT." If "SRF-VIBT" does not appear, perform a search of the device.

When pairing is completed, the BLUETOOTH device's name will appear on the display.

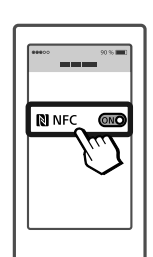
For details, refer to the operating instructions supplied with the BLUETOOTH device. If you are prompted to enter a passkey, enter "0000."

To terminate the BLUETOOTH connection
Select the function other than the BLUETOOTH function.

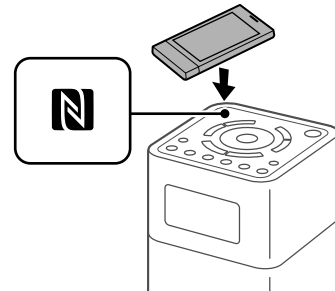
Connecting by One-touch (NFC)

Compatible smartphones
Smartphones with the NFC function built-in (OS: Android™ 2.3.3 or later, excluding Android 3.x)

1 Turn on the NFC function of the BLUETOOTH device.



2 Touch the BLUETOOTH device to the N-Mark on the unit.



Bluetooth 22:34
Bluetooth audio: BT device name

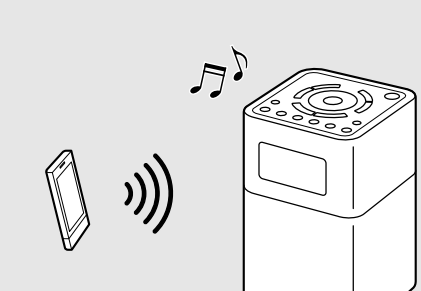
When pairing is completed, the BLUETOOTH device's name will appear on the display.

To terminate the BLUETOOTH connection
Touch the BLUETOOTH device to the N-Mark on the unit.

Note
If your NFC-compatible smartphone has an OS version that is older than Android 4.1.x, download and start the "NFC Easy Connect" application.
"NFC Easy Connect" is a free application for Android smartphones that can be obtained from Google Play™. (The application may not be available in some countries/regions.)

Listening to music

1 Start playback on the BLUETOOTH device.



2 Adjust the volume.

