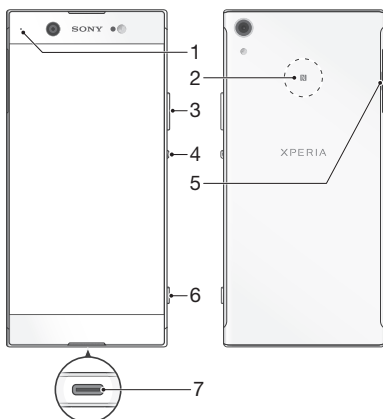
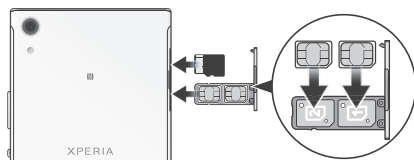


## Device basics



- 1 Charging/Notification light
- 2 NFC
- 3 Volume/Zoom key
- 4 Power key
- 5 Nano SIM/Memory card slot
- 6 Camera key
- 7 Charger/USB Type-C™ cable port

## To insert the nano SIM cards and the memory card




! Do not cut your SIM cards, for example using a blade or scissors, as this may damage your device.

- 1 Using your fingernail, drag out the SIM card tray.
- 2 Firmly place the primary SIM card (SIM 1) in the correct orientation in position (1) as shown in the illustration.
- 3 Firmly place the additional SIM card (SIM 2) in the correct orientation in position (2) as shown in the illustration.
- 4 Insert the memory card in the correct orientation into the memory card slot as shown in the illustration.
- 5 Gently push the tray back into the slot until it fits into place.

## To turn on the device

! It is important to use the USB Type-C™ cable (provided) when charging your device as other types of USB cables can damage your device. It is recommended to charge the battery for at least 30 minutes before you turn on the device for the first time.

- 1 Press and hold down the power key  until the device vibrates.
- 2 Wait a moment for the device to start.

## To activate the screen

- Briefly press the power key .

## Screen protection

- ! Before using your device, remove the protection film by pulling up on the protruding tab.



It is recommended to protect your device with a Sony branded screen cover or a protector intended for your Xperia™ model. The use of third party screen protection accessories may prevent your device from working correctly by covering sensors, lenses, speakers, or microphones and can invalidate the warranty.

## Support for you

Access our support website directly on your device or visit [support.sonymobile.com](http://support.sonymobile.com) with any supported browser. Support options include User guides, downloadable content, troubleshooting tips and contact information.

- ! Even if you don't have a network connection, you can access support contact information on your device. Depending on the country or region where you purchased your device, you can find this information directly in the Support application.

## To access the Support application

- 1 From your **Home screen**, tap .
- 2 Find and tap .

- ! Connect to the internet when using the Support application for the best available support.

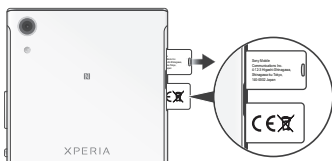
## Warranty, SAR and usage guidelines

For information about warranty, SAR (Specific Absorption Rate) and safety guidelines, please read the **Important information** provided under **Settings > About phone > Legal information** on your device.

## Transferring contacts and content

If you need help to transfer contacts, messages, photos or other data from an old device to your new device, we recommend that you use the Xperia™ Transfer application. Visit [www.sonymobile.com/xperiatransfer](http://www.sonymobile.com/xperiatransfer) for more information.

## To view the CE marking and the FCC ID



- 1 Using your fingernail, drag out the nano SIM card tray.
- 2 Remove the memory card from its slot.

- 3 Drag out the label strips simultaneously, as shown in the illustration. To see the full text of the EU declaration of conformity, visit: <http://www.compliance.sony.de/>.
- 4 To view the FCC ID, turn the device over. The FCC ID is displayed on the other side of the label strips.

! Make sure to drag both label strips simultaneously to avoid tearing them.

## To view the regulatory compliance mark

- Open the phone dialer, then enter \*#07#.

### Legal information

Publication number: 1307-3005.1

This Startup guide is published by Sony Mobile Communications Inc. or its local affiliated company, without any warranty. Improvements and changes to this Startup guide necessitated by typographical errors, inaccuracies of current information, or improvements to programs and/or equipment, may be made by Sony Mobile Communications Inc. at any time and without notice. Such changes will, however, be incorporated into new editions of this Startup guide. All illustrations are for illustration only and may not accurately depict the actual device.

See regulatory information such as the device CE marking in the relevant label tray in the device.

All product and company names mentioned herein are the trademarks or registered trademarks of their respective owners. Any rights not expressly granted herein are reserved. Visit [www.sonymobile.com/global-en/legal/](http://www.sonymobile.com/global-en/legal/) for more information.

Manufacturer: Sony Mobile Communications Inc., 4-12-3 Higashi-Shinagawa, Shinagawa-ku, Tokyo, 140-0002 Japan. For EU product compliance: Sony Belgium, bijkantoor van Sony Europe Limited, Da Vincilaan 7-D1, 1935 Zaventem, Belgium.

© 2017 Sony Mobile Communications Inc. All rights reserved.

### Supported frequency bands

Some frequency bands might be turned off in certain markets or by certain operators.

#### **G3212**

UMTS HSPA+ (Bands 1, 2, 5, 8) GSM GPRS/EDGE (850, 900, 1800, 1900) LTE (Bands 1, 2, 3, 5, 7, 8, 20)  
WLAN, 2.4G/5G, NFC

#### **G3228**

UMTS HSPA+ (Bands 1, 2, 5, 8) GSM GPRS/EDGE (850, 900, 1800, 1900) LTE (Bands 1, 3, 5, 7, 8, 28, 38, 39, 40, 41M) WLAN, 2.4G/5G, NFC

**SONY**<sup>®</sup>

# Startup guide

G3212/G3226

XPERIA

Sony Mobile Communications Inc.  
4-12-3 Higashi-Shinagawa, Shinagawa-ku, Tokyo, 140-0002 Japan



1307-3005.1