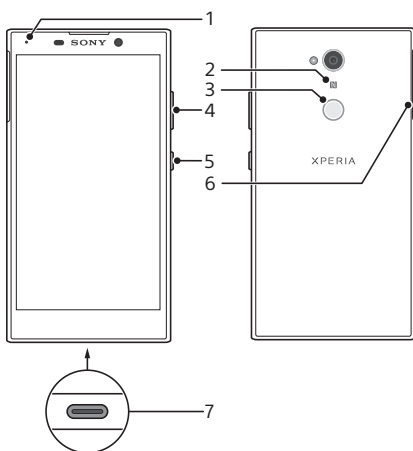
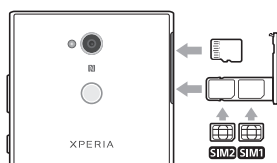


Device basics



- 1 Charging/Notification light
- 2 NFC
- 3 Fingerprint sensor
- 4 Volume/Zoom key
- 5 Power key
- 6 Nano SIM/Memory card slot
- 7 Charger/USB Type-C™ cable port

To insert the nano SIM cards and the memory card




⚠ Do not cut your SIM cards, as this may damage your device.


- 1 Drag out the SIM card tray.
- 2 Insert the memory card in the correct orientation into the memory card slot, as shown in the illustration.
- 3 Place the main SIM card (SIM1) securely in the SIM card tray, as shown in the illustration.
- 4 Place the second SIM card (SIM2) securely in the SIM card tray, as shown in the illustration.
- 5 Gently push the tray back into the slot until it fits into place.

To turn on your device

⚠ It is recommended to charge the battery for at least 30 minutes before you turn on your device for the first time. It is important to use the USB Type-C cable provided when charging your device, as other types of USB cables can damage your device.

- 1 Press and hold down the power key  until the device vibrates.
- 2 Wait a moment for the device to start.

To activate the screen

- Briefly press the power key .

Screen protection

- ! Before using your device, remove the protection film by pulling up on the protruding tab.


Screen covers and protectors may help you protect your device against damage. We recommend you use only those screen covers intended for your Xperia™ device. The use of third party screen protection accessories may prevent your device from working correctly by covering sensors, lenses, speakers, or microphones and can invalidate the warranty.

Support for you

Use the Support app to find your device's model name, software information, help topics and support tools. Visit support.sonymobile.com from the Support app or any browser for user guides, troubleshooting tips, support forum and support contact information.

- ! You can find support contact information in the Support app even without a network connection. The Support app is not available in all countries and regions.

To access the Support app

- Find and tap .

Warranty, SAR and usage guidelines

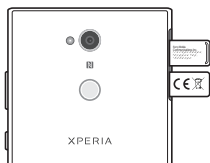
For information about warranty, SAR (Specific Absorption Rate) and safety guidelines, please read the Important information provided under Settings > About phone > Legal information on your device.

Transferring contacts and content

For transferring contacts, messages, photos or other data from an old device to your new device, we recommend that you use the Xperia Transfer application.

Visit <https://www.sonymobile.com/xperiatransfer> for more information.

To view the CE marking and the FCC ID



- 1 Drag out the SIM card tray.
- 2 Remove the memory card from its slot.
- 3 Drag out the label strips simultaneously, as shown in the illustration. To see the full text of the EU declaration of conformity, visit: <http://www.compliance.sony.de/>.

- 4 To view the FCC ID, turn over your device. The FCC ID is displayed on the other side of the label strips.

To view the regulatory compliance mark

- Open the phone dialer, then enter *#07#.

Legal information

Publication number: 1312-6281.1

This Startup guide is published by Sony Mobile Communications Inc. or its local affiliated company, without any warranty. Improvements and changes to this Startup guide necessitated by typographical errors, inaccuracies of current information, or improvements to programs and/or equipment, may be made by Sony Mobile Communications Inc. at any time and without notice. Such changes will, however, be incorporated into new editions of this Startup guide. All illustrations are for illustration only and may not accurately depict the actual device.

See regulatory information such as the device CE marking in the relevant label tray in the device.

All product and company names mentioned herein are the trademarks or registered trademarks of their respective owners. Any rights not expressly granted herein are reserved.

Visit <https://www.sonymobile.com/global-en/legal/> for more information.

Manufacturer: Sony Mobile Communications Inc., 4-12-3 Higashi-Shinagawa, Shinagawa-ku, Tokyo, 140-0002 Japan. For EU product compliance: Sony Belgium, bijkantoor van Sony Europe Limited, Da Vincilaan 7-D1, 1935 Zaventem, Belgium.

© 2018 Sony Mobile Communications Inc. All rights reserved.

Supported frequency bands

Some frequency bands might be turned off in certain markets or by certain operators.

You can find your model number under **Settings > About phone**.

H4311

UMTS HSPA+ (Bands 1, 2, 5, 8) GSM GPRS/EDGE (850, 900, 1800, 1900) LTE (Bands 1, 2, 3, 5, 7, 8, 20, 38) WLAN, 2.4G/5G, NFC

H4331

UMTS HSPA+ (Bands 1, 2, 5, 8) GSM GPRS/EDGE (850, 900, 1800, 1900) LTE (Bands 1, 2, 3, 5, 7, 8, 28, 38, 39, 40, 41M) WLAN, 2.4G/5G, NFC

GSM 850/900 : Power Class 4, DCS(1800)/PCS(1900) : Power Class 1, UMTS : Power Class 3, LTE : Power Class 3, 2.4GHz<100mW, 5.15-5.35GHz<200mW, 5.47-5.725GHz<200mW, NFC 13.56MHz

SONY®

Startup guide
DRAFT

XPERIA

CE

1312-6281.1