

Congratulations on your purchase of the Sony Ericsson T658c. Enjoy 3.2 megapixel digital photography and themes, illumination and materials inspired by nature. For additional phone content, go to www.sonyericsson.com/cn/fun.

Register now to get a suite of tools, free online storage, special offers, news and competitions at www.sonyericsson.com/cn/myphone.

For product support, go to www.sonyericsson.com/cn.

Accessories – More for your phone

Bluetooth™ Car Speakerphone HCB-100

Simplicity and high performance
handsfree – in the car, in your office
or at home



Bluetooth™ Headset HBH- IV835

Stylish discretion with excellent sound



Bluetooth™ Music Receiver MBR-100

Stream music from your phone to
your hi-fi for outstanding sound
quality



These accessories can be purchased separately but may not be available in every market. To view the full range go to www.sonyericsson.com/accessories.

Contents

Getting started	5	Call list	28
Assembly	5	Speed dial	28
Turning on the phone	5	Voicemail	29
Making and receiving calls	6	Diverting calls	31
Help in your phone	7	More than one call	31
Charging the battery	7	Conference calls	32
Desk Stand CDS-65	8	My numbers	33
Phone overview	10	Accept calls	33
Menu overview	12	Restricted dialling	33
Navigation	14	Fixed dialling	34
Shortcuts	15	Call time and cost	34
Activity menu	16	Business cards	34
File manager	16	Messaging	35
Phone language	18	Text messages	35
Entering text	18	Picture messages	36
Chinese input	19	Templates	38
Stroke input	20	Voice messages	39
Pinyin input	22	Email	39
Calling	23	My friends	41
Making and receiving calls	23	Area and cell information	43
Emergency calls	24	Imaging	43
Contacts	24	Camera and video recorder	43
Synchronizing contacts	27	Transferring pictures	45
Groups	28	Pictures and video clips	46

PhotoDJ™ and VideoDJ™	46	Time and date	69
Themes	47	Locks	69
Entertainment	47	IMEI number	70
Stereo portable handsfree	47	Troubleshooting	71
Music and video players	47	Common questions	71
Radio	51	Error messages	73
PlayNow™	52	Important information	74
MusicDJ™	53	Guidelines for Safe and	
Games	54	Efficient Use	76
Applications	55	Limited Warranty	81
Connectivity	56	FCC Statement	83
Settings	56	Declaration of Conformity	84
Using Internet	56		
RSS reader	58		
Synchronizing	58		
Bluetooth™ wireless technology ..	59		
Update service	63		
More features	64		
Alarms	64		
Calendar	64		
Tasks	66		
Notes	66		
Timer, stopwatch and calculator ..	67		
Code memo	67		
Profiles	68		

Sony Ericsson T658c

GSM 900/1800/1900

This User guide is published by Sony Ericsson Mobile Communications AB or its local affiliated company, without any warranty. Improvements and changes to this User guide necessitated by typographical errors, inaccuracies of current information, or improvements to programs and/or equipment, may be made by Sony Ericsson Mobile Communications AB at any time and without notice. Such changes will, however, be incorporated into new editions of this User guide.

All rights reserved.

©Sony Ericsson Mobile Communications AB, 2007
Publication number: 1200-6477.1

Please note:

Some of the services in this User guide are not supported by all networks. *This also applies to the GSM International Emergency Number 112.*

Please contact your network operator or service provider if you are in doubt whether you can use a particular service or not.

Please read the *Guidelines for safe and efficient use* and the *Limited warranty* chapters before you use your mobile phone.

Your mobile phone has the capability to download, store and forward additional content, e.g. ringtones. The use of such content may be restricted or prohibited by rights of third parties, including but not limited to restriction under applicable copyright laws. You, and not Sony Ericsson, are entirely responsible for additional content that you download to or forward from your mobile phone. Prior to your use of any additional content, please verify that your intended use is properly licensed or is otherwise authorized. Sony Ericsson does not guarantee the accuracy, integrity or quality of any additional content or any other third party content. Under no circumstances will Sony Ericsson be liable in any

way for your improper use of additional content or other third party content.

Bluetooth™ is a trademark or registered trademark of Bluetooth SIG Inc.

The liquid identity logo, PlayNow, MusicDJ, PhotoDJ and VideoDJ are trademarks or registered trademarks of Sony Ericsson Mobile Communications AB.

Sony, Memory Stick Micro™ and M2™ are trademarks of Sony Corporation.

Ericsson is a trademark or registered trademark of Telefonaktiebolaget LM Ericsson.

Adobe® Photoshop® Album Starter Edition is a trademark or registered trademark of Adobe Systems Incorporated in the United States and/or other countries/regions.

Microsoft, Windows, PowerPoint, Outlook and Vista are trademarks or registered trademarks of Microsoft Corporation in the US and other countries/regions.

T9™ Text Input is a trademark or a registered trademark of Tegic Communications. T9™ Text Input is licensed under one or more of the following: U.S. Pat. Nos. 5,818,437, 5,953,541, 5,187,480, 5,945,928, and 6,011,554; Canadian Pat. No. 1,331,057, United Kingdom Pat. No. 2238414B; Hong Kong Standard Pat. No. HK0940329; Republic of Singapore Pat. No. 51383; Euro.Pat. No. 0 842 463(96927260.8) DE/DK, FI, FR, IT, NL, PT, ES, SE, GB; and additional patents are pending worldwide.

Java and all Java based trademarks and logos are trademarks or registered trademarks of Sun Microsystems, Inc. in the U.S. and other countries/regions.

End-user license agreement for Sun™ Java™ J2ME™.

Restrictions: Software is confidential copyrighted information of Sun and title to all copies is retained by Sun and/or its licensors. Customer shall not modify, decompile, disassemble, decrypt, extract, or otherwise reverse engineer Software. Software may not be leased, assigned, or sublicensed, in whole or in part.

Export Regulations: Software, including technical data, is subject to U.S. export control laws, including the U.S. Export Administration Act and its associated regulations, and may be subject to export or import regulations in other countries/regions. Customer agrees to comply strictly with all such regulations and acknowledges that it has the responsibility to obtain licenses to export, re-export, or import Software. Software may not be downloaded, or otherwise exported or re-exported (i) into, or to a national or resident of, Cuba, Iraq, Iran, North Korea, Libya, Sudan, Syria (as such listing may be revised from time to time) or any country/region to which the U.S. has embargoed goods; or (ii) to anyone on the U.S. Treasury Department's list of Specially Designated Nations or the U.S. Commerce Department's Table of Denial Orders.

Restricted Rights: Use, duplication or disclosure by the United States government is subject to the restrictions as set forth in the Rights in Technical Data and Computer Software Clauses in DFARS 252.227-7013(c) (1) (i) and FAR 52.227-19(c) (2) as applicable.

Other product and company names mentioned herein may be the trademarks of their respective owners.

Any rights not expressly granted herein are reserved.

Note: Sony Ericsson advised users to backup their personal data information.

All illustrations are for illustration only and may not accurately depict the actual phone.

Instruction symbols

The following appear in the User guide.



Note



Tip



Warning



A service or function is network- or subscription-dependent. Contact your network operator for details.



Use a selection or navigation key to scroll and select. See *Navigation* on page 14.



Press the navigation key centre.



Press the navigation key up.



Press the navigation key down.



Press the navigation key left.



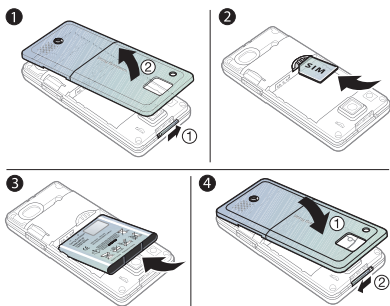
Press the navigation key right.

Getting started

Assembly

Before you start using your phone, you need to insert a SIM card and the battery.

To insert the SIM card and battery



- 1 Slide and hold the clasp sideways and remove the battery cover.
- 2 Slide the SIM card into its holder with the contacts facing down.
- 3 Insert the battery with the label side up and the connectors facing each other.
- 4 Replace the battery cover.

Turning on the phone

To turn on the phone



- 1 Press and hold down ① .
- 2 Select a mode:
 - **Normal mode** – full functionality.
 - **Flight mode** – limited functionality with network, FM radio, Bluetooth™ transceivers off.
- 3 Enter your SIM card PIN, if requested.
- 4 Select a language.
- 5 Select **Yes** to use the setup wizard.

! *If you make a mistake when you enter your PIN, you can press (C) to delete numbers from the screen.*

SIM card

The SIM (Subscriber Identity Module) card, which you get from your network operator, contains information about your subscription. Always turn off your phone and detach the charger before you insert or remove the SIM card.

- You can save contacts on the SIM card before you remove it from your phone. See *To copy names and numbers to the SIM card* on page 25.

PIN

You may need a PIN (Personal Identification Number) to activate the services in your phone. Your PIN is supplied by your network operator. Each PIN digit appears as *, unless it starts with emergency number digits, for example, 112 or 911. You can see and call an emergency number without entering a PIN.

To delete numbers from the display

- Press **C**.
- If you enter the wrong PIN three times in a row, **PIN blocked** appears. To unblock it, you need to enter your PUK (Personal Unlocking Key). See *SIM card lock* on page 69.

Flight mode

In **Flight mode** the network, radio and Bluetooth transceivers are turned off to prevent disturbance to sensitive equipment.

Start-up screen

The start-up screen appears when you turn your phone on. See *Using pictures* on page 46.

Standby

After you have turned your phone on and entered your PIN, the name of the network operator appears on the screen. This is called standby.

Making and receiving calls

You must turn on your phone and be within range of a network.

To make a call

- 1 From standby enter a phone number (with international country/region code and area code, if applicable).
- 2 Select **Call**.

To answer a call

- Select **Answer**.

To reject a call

- Select **Busy**.

Help in your phone

Help and information is available in your phone at any time.

To use the setup wizard

- 1 From standby select **Menu** > **Settings** > the **General** tab > **Setup wizard**.
- 2 Select an option.
See *Navigation* on page 14.

To view information about functions

- Scroll to a function and select **More** > **Info**, if available.

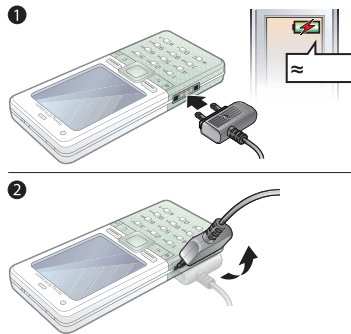
To view the phone demonstration

- From standby select **Menu** > **Entertainment** > **Demo tour**.

Charging the battery

The phone battery is partly charged when you buy it.

To charge the battery

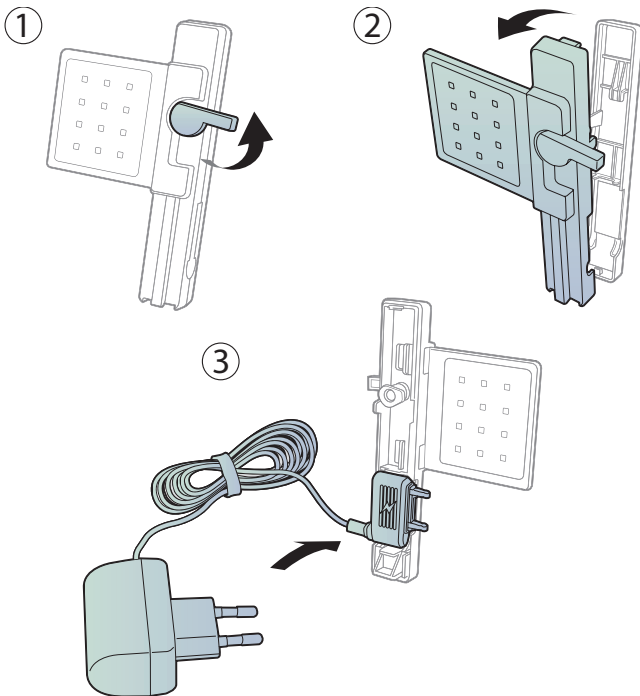


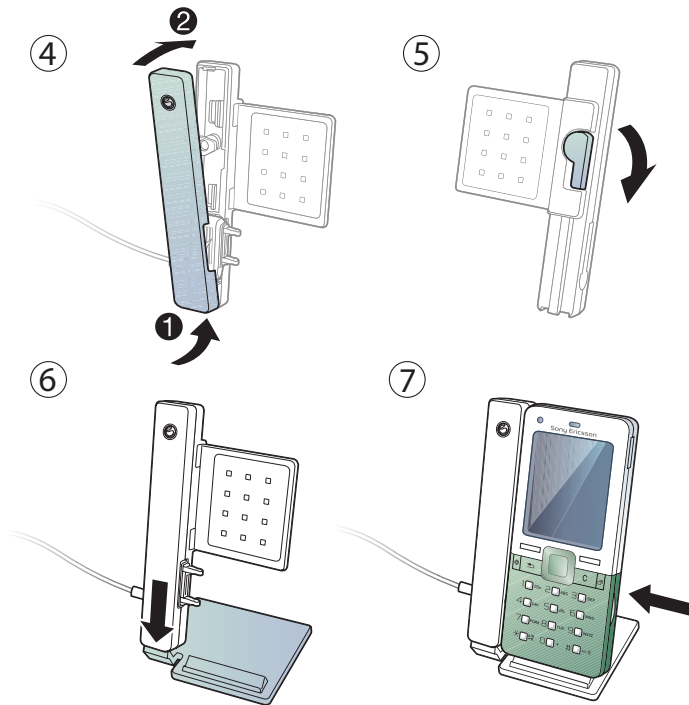
- 1 Connect the charger to the phone. It takes approximately 2.5 hours to fully charge the battery. Press a key to fully charge the screen.
- 2 Remove the charger by tilting the plug upwards.

You can use your phone while it is charging. You can charge the battery at any time and for more or less 2.5 hours. You can interrupt the charging without damaging the battery.

Desk Stand CDS-65

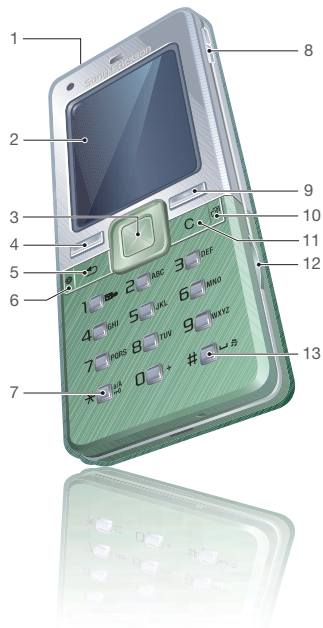
Your phone's best assistant: connect a USB cable, charger and portable handsfree.



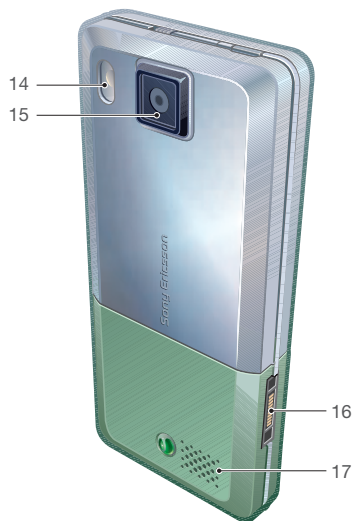


Phone overview

- 1 Power on/off key
- 2 Screen
- 3 Navigation key, music player control
- 4 Selection key
- 5 Back key
- 6 Internet key
- 7 Keypad lock
- 8 Volume, camera digital zoom buttons
- 9 Selection key
- 10 Activity menu key
- 11 Clear key
- 12 Camera key
- 13 Silent key



- 14 Light
- 15 Camera
- 16 Connector for charger, handsfree and USB cable
- 17 Speaker



Menu overview



PlayNow™*



Monternet*



Entertainment

Online services*
Radio
Games
Video player
VideoDJ™
PhotoDJ™
MusicDJ™
Remote control
Record sound
Demo tour



Camera



Messaging

Write new
Inbox
Email
RSS reader
Drafts
Outbox
Sent messages
Saved messages
My friends*
Call voicemail
Templates
Settings



Music player

Now playing
Artists
Tracks
Playlists



File manager**

Camera album
Music
Pictures
Videos
Themes
Web pages
Games
Applications
Other



Contacts

New contact



Alarms

**Calls****

All



Answered



Dialled



Missed

**Organizer**

Applications
Calendar
Tasks
Notes
Synchronization
Timer
Stopwatch
Light
Calculator
Code memo

**Settings****

General
Profiles
Time & date
Language
Update service
Voice control
New events
Shortcuts
Flight mode
Security
Setup wizard
Phone status
Master reset



Sounds & alerts
Ring volume
Ringtone
Silent mode
Increasing ring
Vibrating alert
Message alert
Key sound



Display
Wallpaper
Themes
Start-up screen
Screen saver
Clock size
Brightness
Edit line names*



Calls
Speed dial
Divert calls
Manage calls
Time & cost*
Show/hide my no.
Handsfree
Switch to line 2*



Connectivity*
Bluetooth
USB
Synchronization
Device management
Mobile networks
Data communication
Internet settings
Streaming settings
Accessories

* Some menus are operator-, network- and subscription-dependent.

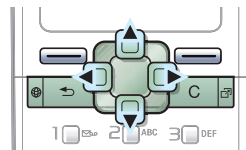
** You can use the navigation key to scroll between tabs in submenus. For more information, see Navigation on page 14.

Navigation

The main menus are shown as icons.
Some submenus include tabs.

To navigate the phone menus

- 1 From standby select **Menu**.
- 2 Use the navigation key to move through the menus.







To scroll between the tabs

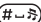
- Scroll to a tab by pressing the navigation key left or right.


Key


	Go to the main menus or to select items
	Scroll between the menus and tabs
	Select options shown immediately above these keys on the screen
	Go back one level in the menus. Press and hold down to return to standby or to end a function
	Delete items, such as pictures, sounds and contacts. Press and hold down to mute the microphone during a call
	Open the browser
	Open the activity menu
	Press and hold down to take a picture or record a video clip
	Press and hold down to call your voicemail service (if set)

 -  Press and hold down a number key to reach a contact beginning with a specific letter

 -  Press a number key and select **Call** to speed dial

 Press to turn off the ringtone when you receive a call. Press and hold down to set the phone to silent. The alarm signals even if your phone is set to silent


 View status information in standby.
Increase the volume during a call, or when you use the music player. Press and hold down to go back one track when you use the music player.
Zoom out when you use the camera or view pictures.
Press twice to reject a call.
Voice control. See *Voice control* on page 29

 Decrease the volume during a call, or when you use the music player. Press and hold down to go forward one track when you use the **MUSIC player**.
Zoom in when you use the camera or view pictures.
Voice control. See *Voice control* on page 29





Shortcuts

You can use keypad shortcuts to go directly to a menu. Menu numbering starts from the top left icon and moves across and then down row by row.

To go directly to the seventh menu

- From standby select **Menu** and press .

To use navigation key shortcuts

- From standby press , ,  or  to go directly to a function.


To edit a navigation key shortcut

- From standby select **Menu** > **Settings** > the **General** tab > **Shortcuts**.
- Scroll to an option and select **Edit**.
- Scroll to a menu option and select **Shortcut**.

Activity menu

The activity menu gives you fast access to certain functions.

To open the activity menu

- Press .

Activity menu tabs

- **New events** – view missed calls and new messages. These can also be set to appear as pop-up texts.
- **Running apps** – applications that are running in the background.
- **My shortcuts** – add your favourite functions to access them quickly.
- **Internet** – your Internet bookmarks.

To select pop-up texts

- From standby select **Menu > Settings > the General tab > New events > Pop-up**.

File manager

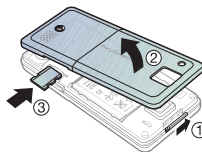
You can use the file manager to handle items saved in the phone memory or on a memory card.

- ! *You may have to purchase a memory card separately from your phone.*

Memory Stick Micro™ (M2™)

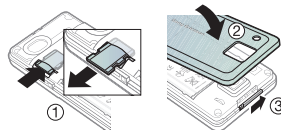
Your phone supports Memory Stick Micro™ (M2™) memory card adding more storage space to your phone. It can also be used as a portable memory card with other compatible devices.

To insert a memory card



- 1 Remove the battery cover.
- 2 Insert the memory card with the golden contacts facing down.

To remove a memory card



- 1 Press the edge to release and remove the memory card.
- 2 Replace the battery cover.

To view memory card options

- 1 From standby select **Menu > File manager >** the **On Memory Stick** tab.
- 2 Select **More**.

Handling files

You can move and copy files between your phone, a computer and a memory card. Files are saved on the memory card first and then in the phone memory. Unrecognized files are saved in the **Other** folder.

You can create subfolders to move or copy files to. When you handle files, you can select more than one or all the files in a folder at the same time for all items except **Games** and **Applications**.

If the memory is full, delete some content to create space.

File manager tabs

The file manager is divided into three tabs, and icons indicate where the files are saved.

- **All files** – all content in the phone memory and on a memory card.
- **On Memory Stick** – all content on a memory card.
- **In phone** – all content in the phone memory.

To open a file in the file manager

- 1 From standby select **Menu > File manager**.
- 2 Scroll to a folder and select **Open**.

To view information about files

- 1 From standby select **Menu > File manager**.
- 2 Scroll to a file and select **More > Information**.

To move a file in the file manager

- 1 From standby select **Menu > File manager**.
- 2 Scroll to a folder and select **Open**.
- 3 Scroll to a file and select **More > Manage file > Move**.
- 4 Select an option.

To select more than one file in a folder

- 1 From standby select **Menu > File manager**.
- 2 Scroll to a folder and select **Open**.
- 3 Select **More > Mark > Mark several**.
- 4 Select **Mark** to mark the files.

To delete a file from the file manager

- 1 From standby select **Menu > File manager**.
- 2 Find the file and press **(C)**.

Phone language

You can select a language to use in your phone.

To change the phone language

- 1 From standby select **Menu** > **Settings** > the **General** tab > **Language** > **Phone language**.
- 2 Select an option.

Entering text

There are two methods you can use to enter text:

- Multitap text input
- T9™ Text Input

To change text input methods

- When you enter letters, press and hold down **(# a, b, c*)**.

To view options when you enter letters

- Select **More**.

To enter text using multitap

- From standby select **Menu** > **Messaging** > **Write new** > **Text message**.
- Press **(2)** – **(9)** until the desired character appears.
- Press **(C)** to delete.
- Press **(# a, b, c*)** to shift between capitals and lower-case letters.

- Press and hold down **(0 +)** – **(9)** to enter numbers.
- Press **(# → *)** to add a space.
- Press **(1 = a, b, c*)** to enter full stops and commas.
- Press **(0 +)** to enter the + sign.

! *Multitap input only applies when latin characters are selected as writing language.*

T9™ Text Input

The T9™ Text Input method uses a built-in dictionary.

To enter text using T9™ Text Input

- 1 From standby select **Menu** > **Messaging** > **Write new** > **Text message**.
- 2 Press each key only once, even if the letter you want is not the first letter on the key. For example, if you want to write the word “Jane”, press **(5)**, **(2)**, **(6)**, **(3)**. Write the whole word before looking at the suggestions.
- 3 Press **(C)** to delete.
- 4 Use **(↵)** or **(↓)** to view suggestions.
- 5 Press **(# → *)** to accept a suggestion.
- 6 Press **(1 = a, b, c*)** to enter full stops and commas.