

## Preparing the phone

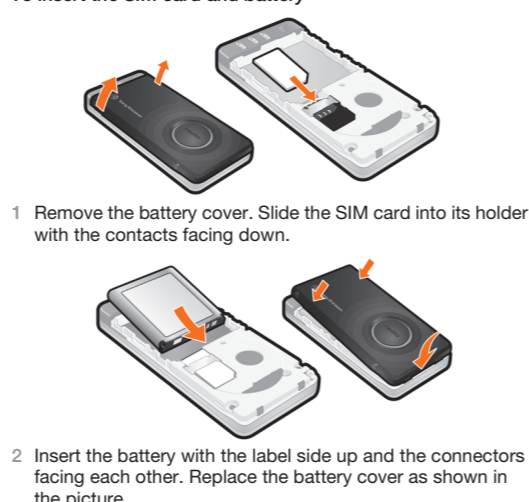
**Congratulations** on your purchase of the Sony Ericsson R300a. For additional phone content, go to [www.sonyericsson.com/fun](http://www.sonyericsson.com/fun). Register now to get free online storage and special offers at [www.sonyericsson.com/myphone](http://www.sonyericsson.com/myphone). For product support, go to [www.sonyericsson.com/support](http://www.sonyericsson.com/support).

### Instruction symbols

The following instruction symbols appear in this User guide:

- > Use a navigation or selection key to scroll and select.
- ⊙ Press the navigation key centre.
- ⬅ Press the navigation key to the left.
- ➡ Press the navigation key to the right.
- ⬆ Press the navigation key up.
- ⬇ Press the navigation key down.
- ! Note
- 💡 Tip
- ⚠ Warning
- 📶 Indicates that a service or function is network- or subscription-dependent. All menus or functions may not be available in your phone. Consult your network operator for more information.

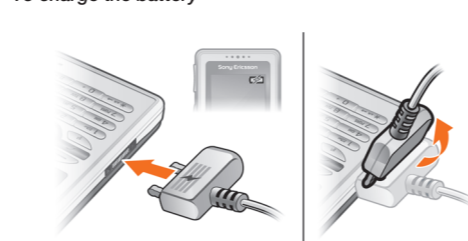
### To insert the SIM card and battery



- Remove the battery cover. Slide the SIM card into its holder with the contacts facing down.
- Insert the battery with the label side up and the connectors facing each other. Replace the battery cover as shown in the picture.

! Do not force the battery cover into place. Place the battery cover carefully onto the phone and close it.

### To charge the battery



- The phone battery is partly charged when you buy it. Connect the charger to the phone. It takes approximately 2.5 hours to fully charge the battery. Press a key to illuminate the screen.
- To remove the charger, tilt the plug upwards.

! You can use the phone during charging. You can charge the battery for more or less than 2.5 hours. Interrupted charging will not damage the battery.

### To turn on the phone

- Press and hold down **⏻**.
- Enter your PIN if requested. To correct mistakes, press **⏻**.
- Select **OK**.
- Select a language.
- Enter the time and date and select **Save**.

### To turn off the phone

- Press and hold down **⏻**.

### Standby

After you have turned on the phone and entered your PIN, the name of your operator appears on the screen. This is called standby. You can now make and receive calls.

## SIM and PIN

### SIM card

The SIM (Subscriber Identity Module) card, which you get from your network operator, contains information about your subscription. Always turn off your phone and detach the charger before you insert or remove the SIM card.

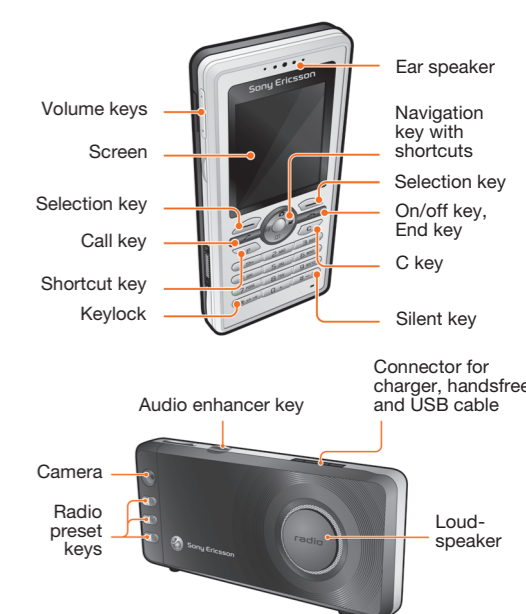
💡 You can save contacts on the SIM card before removing it from your phone. Contacts may also be saved in the phone memory. See [Contacts](#) on page 15.

### PIN code

You may need a PIN (Personal Identification Number) to activate the services in your phone. Your PIN is supplied by your network operator. Each PIN digit appears as \*, unless it starts with emergency number digits, for example, 112 or 911. You can call an emergency number without entering a PIN.

! If you enter the wrong PIN three times in a row, PIN blocked. To unblock, enter your PUK code provided by your network operator. To unblock it, you need to enter your PUK (Personal Unblocking Key).

## Phone overview



## Menu overview

### Network coverage



The network bars show the strength of the GSM network in your area. Try moving to another location if you have trouble calling and network coverage is poor. No network means you are not in range of a network.

- 📶 = Good network coverage
- 📶 = Average network coverage

### Battery status

- 🔋 = The phone battery is fully charged
- 🔋 = The phone battery is empty

	<b>Organizer</b>	File manager, Alarms, Calendar, Tasks, Notes, Timer, Stopwatch, Calculator
	<b>Internet</b>	
	<b>Entertainment</b>	TrackID™, My games, Sound recorder
	<b>Camera</b>	
	<b>Messaging</b>	Write new, Inbox, Call voicemail, Drafts, Outbox, Sent messages, Saved msgs, Templates, Settings
	<b>FM radio</b>	
	<b>Calls*</b>	
	All	
	Answered	
	Dialled	
	Missed	
	<b>Contacts</b>	New contact
	<b>Settings*</b>	
	General	
	Sounds & alerts	
	Display	
	Calls	
	Connectivity	

Some menus and icons in this document may vary depending on operator, network or subscription.  
\* You can use the navigation key to scroll between tabs in sub menus.

## Screen icons

These icons may appear on the screen.

Icon	Description
	Battery icon. A completely green icon means the battery is fully charged
	You have missed a call
	Divert calls is activated
	The phone is set to silent
	The keypad is locked
	You have received a new text message
	You have received a new picture message
	The handsfree is connected
	An alarm is activated
	Ongoing call
	The loudspeaker is on
	The radio is playing
	The Bluetooth function is activated

## Navigation

The main menus are shown as icons. Some submenus include tabs.

- ### To navigate the menus
- From standby press **⊙** to select **Menu**.
  - Press **⬅**, **➡**, **⬆**, **⬇** to move through the menus.

- ### To select actions on the screen
- Press any of the selection keys, or **⊙**.

- ### To scroll between the tabs
- Scroll to a tab by pressing **⬅** or **➡**.

- ### To return to standby
- Press **⏻**.

- ### To lock the keypad
- Press **⏻** and select **Lock**.

! Calls to the international emergency number 112 can still be made, even when the keypad is locked.

- ### To unlock the keypad
- Press **⏻** and select **Unlock**.



## Calling

You must turn on the phone and be within range of a network.

### To make a call

- From standby enter the area code and phone number.
- Press **⏻**.

- ### To end a call
- Press **⏻**.

- ### To answer a call
- Press **⏻**.

- ### To reject a call
- Press **⏻**.

- ### To change the ear speaker volume during a call
- On the left side of the phone, press the volume keys up or down.

- ### To mute the microphone during a call
- Press and hold down **⏻**.
  - Press and hold down **⏻** again to resume.

- ### To turn off the ringtone when receiving a call
- Press **⏻** without answering the call.

- ### To turn the loudspeaker on during a call
- Select **SpkrOn**.

⚠ Do not hold the phone to your ear when using the loudspeaker. This could damage your hearing.



### To make international calls

- From standby press and hold down **⏻** until a + sign appears on the screen.
- Enter the country code, area code (without the first zero) and phone number.
- Press **⏻**.

### To view a missed call

- When **Missed calls:** is displayed, select **Yes**. To call back, scroll to the number and press **⏻**.

### Call list

You can view information about recent calls.

- ### To view the call list
- From standby press **⏻**.

- ### To call a number from the call list
- From standby press **⏻**.
  - Scroll to the name or number and press **⏻**.

### To clear the call list

- From standby press **⏻**.
- Scroll to the **All** tab and select **Options > Delete all**.

## Contacts

You can save contacts in the phone memory or on the SIM card. You can copy contacts from the phone memory to the SIM card or from the SIM card to the phone memory.

💡 See [Entering text](#) on page 29.

### To add a contact

- From standby select **⏻**.
- Scroll to **New contact** and select **Add**.
- Select **Add** to enter the name and select **OK**.
- Scroll to **New number:** and select **Add**.
- Enter the number and select **OK**.
- Select a number option.
- Scroll between tabs and select the fields to add information.
- Select **Save**.

💡 You can enter the + sign and country code with all phonebook numbers. They can then be used abroad or at home. See [To make international calls](#) on page 14.

### To call a contact

- From standby press **⏻**.
- Scroll to, or enter the first few letters of the contact.
- Press **⏻**.

### To edit a contact

- From standby press **⏻**.
- Scroll to the contact and select **Options > Edit contact**.
- Scroll between the tabs, edit the information and select **Save**.

### To delete a contact

- From standby press **⏻**.
- Scroll to the contact and press **⏻**.

### To copy all contacts to the SIM card

- From standby press **⏻**.
- Scroll to **New contact** and select **Options > Advanced > Copy to SIM > Copy all**.

### To view and edit your phone numbers

- From standby press **⏻**.
- Scroll to **New contact** and select **Options > Special numbers > My numbers**.
- Select an option.

Your phone has a radio and the handsfree works as an antenna.



### To listen to the radio

- Connect the handsfree to the phone.
- From standby press **⏻**.

### To turn the loudspeaker on

- When the radio is playing, select **Options > Turn on spkr**.

! Do not use your phone as a radio in places where this is prohibited.

### To switch to AM

- When the radio is playing, select **Options > Turn on AM**.

! When you listen to AM radio, you must use the handsfree included in the phone kit.

### To change the volume

- When the radio is playing, press the volume keys on the left side of the phone up or down.

## Searching for channels

### To automatically search for channels

- When the radio is playing, press **⏻**.

### To manually search for channels

- When the radio is playing, press **⏻** or **⏻**.

### To switch between preset channels

- When the radio is playing, press **⏻** or **⏻**.

## Saving channels

You can save up to 20 preset channels.

### To save a radio channel to the list of channels

- When you have found a radio channel, select **Options > Channels > Save**.
- Select **Insert**.

### To select saved channels

- From standby press **⏻**.
- Select **Options > Channels > Channels**.
- Select a radio channel.

### To save a radio channel to a radio preset key

- When you have found a radio channel, select **Options > Set radio key**.
- Select a radio key in the list > **Add**.
- Select **Add** to add the channel to the list of channels.

### To select a radio channel saved to a radio preset key

- Press any of the radio preset keys **⏻**, **⏻** or **⏻**.

### To use concert sound

- When the radio is playing, press **⏻**.
- To deactivate **Concert sound** and switch to **Normal effect**, press **⏻** again.

💡 Use **Concert sound** for a better listening experience.

### To use volume boost

- When the radio is playing, select **Options > Turn on spkr** and press **⏻**.
- To deactivate **Volume boost** and switch to **Normal effect**, press **⏻** again.

💡 Use **Volume boost** in noisy environment to maximize the volume from the loudspeaker.

⚠ Adjust the volume cautiously when using **Volume boost** to avoid volume levels that could damage your hearing.

### To record radio

- When the radio is playing, select **Options > Record radio** to start recording and select **Save** to stop and save the recording. The radio recording is saved in **Options > My radio recs**.

💡 Select **Options > Settings > Record quality** and select between **Normal quality** or **High quality**.

! This service is not available in all countries. Where available, you may only use this service for playback at a more convenient point in time.

### To set the radio as alarm signal

- From standby select **Menu > Organizer > Alarms**.
- Scroll to an alarm and select **Edit**.
- Scroll to the **🎵** tab.
- Scroll to **Alarm signal:** > **Edit**.
- Select **Radio**. The latest used radio channel will be used as alarm signal.
- Select **Save**.

! Keep the handsfree inserted when you select radio as alarm signal. The radio alarm signal will sound through the loudspeaker.

### To exit the radio

- When the radio is playing, press **⏻**.

### To minimize the radio on the screen

- Select **Options > Minimize**.
- To restore the radio on the screen, from standby press **⏻**.

### To turn off the radio when minimized

- From standby press **⏻** and press **⏻**.

## Messaging

## Text messages (SMS)

You must have a service centre number, which is supplied by your service provider and saved on the SIM card. You may have to enter the number yourself.

### To set service centre number

- From standby select **Menu > Messaging > Settings > Text message > Service centre**. The number is shown if it is saved on the SIM card.
- If there is no number shown, enter the service centre number, including the international "+" sign and country code.
- Select **Save**.

💡 See [Entering text](#) on page 29.

### To write and send a text message

- From standby press **⏻**.
- Select **Text message**. Enter the message and select **Cont**.
- Select a recipient (**Enter phone no.** or **Contacts look-up**) and select **Send**.

### To view a received text message

- Text message received** appears. Select **Yes**.
- Scroll to the unread message and select **View**.



## Camera

### Picture messages (MMS)

Picture messages can contain text, pictures, sound recordings and attachments.

- ! You must set an MMS profile and the address of your message server. If no MMS profile or message server exists, you can receive all the settings automatically from your network operator or at [www.sonyericsson.com/support](http://www.sonyericsson.com/support).

#### To create and send a picture message

- From standby press **☰**.
- Select **Picture msg.**
- Enter text. To add items to the message, press **☺**, scroll **☞** and select an item.
- When the message is ready select **Continue**.
- Select a recipient (**Enter email addr.**, **Enter phone no.** or **Contacts look-up**) and select **Send**.

- ! Sending and receiving phones must have subscriptions that support picture messaging.

22

## More functions

### TrackID™

TrackID™ is a free music recognition service. Search for song titles, artists and album names. You must have the required settings in your phone. See *Internet* on page 24.

- ! For cost information contact your service provider.

#### To search for song information

- When you hear a song through a loudspeaker, from standby select **Menu** > **Entertainment** > **TrackID™**.

### Internet

You need the correct settings in your phone. If settings are not in your phone, you can:

- Get them in a text message (SMS) from the network operator.
- On a computer, go to [www.sonyericsson.com/support](http://www.sonyericsson.com/support) and request a text message with the settings.

#### To select an Internet profile

- From standby select **Menu** > **Settings** > the **Connectivity** tab > **Internet settings** > **Internet profiles**. Select a profile.

#### To start browsing

- From standby select **Menu** > **Internet**.
- Select **Options** > **Go to**.
- Select an option.

#### To exit browsing

- When you browse, select **Options** > **Exit browser**.

24

### File manager

You can use the file manager to handle files saved in the phone memory.

#### To view information about files

- From standby select **Menu** > **Organizer** > **File manager**.
- Find a file and select **Options** > **Information**.

#### To move a file in the file manager

- From standby select **Menu** > **Organizer** > **File manager**.
- Find a file and select **Options** > **Manage file** > **Move**.
- Select an option.

#### To delete a file from the file manager

- From standby select **Menu** > **Organizer** > **File manager**.
- Find the file and press **☒**.

25

### Mass storage

You can connect your phone to a computer with a USB cable to transfer files using **Mass storage**.

- ! Only use a USB cable supported by your phone. Do not remove the USB cable from your phone or computer during file transfer as this may corrupt the phone memory.

#### To use Mass storage

- Connect a USB cable to the phone and the computer. The phone will shut down in this mode and restart when disconnected from the USB cable.
- Phone:** Select **Yes** to confirm the mass storage session.
- Computer:** Open the removable disk folder to view the phone folders.
- Drag and drop files between the phone and the computer.

#### To disconnect the USB cable safely

- Computer:** Right-click the removable disk icon and select **Eject**.
- Phone:** Disconnect the USB cable when the following message is shown in the phone: **Mass storage session ended. It is now safe to remove the USB cable.**

26

### Bluetooth™ wireless technology

Bluetooth™ wireless technology makes wireless connections to other Bluetooth devices, for example, a Bluetooth headset, possible. You can:

- Connect to several devices at the same time.
- Exchange items.

- ! The recommended maximum distance between two Bluetooth devices is 10 metres (33 feet), with no solid objects in between.

#### To turn the Bluetooth function on

- From standby select **Menu** > **Settings** > the **Connectivity** tab > **Bluetooth** > **Turn on**.

- ! Please check if local laws or regulations restrict the use of Bluetooth wireless technology. If it is not allowed, you must ensure that the Bluetooth function is turned off.

#### To show or hide your phone

- From standby select **Menu** > **Settings** > the **Connectivity** tab > **Bluetooth** > **Visibility** > **Show phone** or **Hide phone**.

- ! If set to **hide**, other devices will not be able to identify your phone using Bluetooth wireless technology.

27

#### To pair a device with your phone

- From standby select **Menu** > **Settings** > the **Connectivity** tab > **Bluetooth** > **My devices** > **New device** to search for available devices.
- Select a device from the list. Enter a passcode, if required.

#### To pair your phone with a Bluetooth handsfree

- From standby select **Menu** > **Settings** > the **Connectivity** tab > **Bluetooth** > **Handsfree**.
- Select **Yes** if you are adding a Bluetooth handsfree for the first time or select **Handsfree** > **My handsfree** > **New handsfree** if you are pairing with another Bluetooth handsfree. Make sure that your handsfree is ready to be paired.

#### To receive an item

- Menu** > **Settings** > the **Connectivity** tab > **Bluetooth** > **Visibility** > **Show phone**.
- When you receive an item follow the instructions that appear.

#### To send a camera picture using Bluetooth

- From standby select, for example, **Menu** > **Organizer** > **File manager** > **Camera album**.
- Scroll to a picture and select **Options** > **Send** > **Via Bluetooth**.

28

### Entering text

There are two methods you can use to enter text: multitap or predictive text input.

- ! By using predictive text input you only have to press each key once. Continue writing a word even if it appears to be wrong. The phone uses the dictionary to recognize the word when all letters are entered.

#### To enter text using multitap

- Press **☰** – **☒** until the letter appears.
- Press **☒** to add a space.
- Press **☒** to enter punctuation marks.

#### To enter text using predictive text input

- For example, if you want to write the word "Land", press **☒**, **☒**, **☒**, **☒**.
- If the word or punctuation mark is the one you want, press **☒** to accept and add a space. To accept a word without adding a space, press **☒**.
- If the word or punctuation mark is not the one you want, press **☺** or **☞** repeatedly to view alternative words.

#### To add a word to the dictionary

- When you write the message, select **Options** > **Spell word**.
- Enter the word using multitap and select **Insert**.

#### How to use the keys

- To change the input method, press and hold down **☒**.
- To shift between upper case and lower case letters, press **☒**.

29

- To change the writing language, press and hold down **☒**.
- To delete characters, press **☒**. To delete a whole word, press and hold down **☒**.
- To enter numbers, press and hold down **☒** – **☒**.

### Alarms

You can set a sound or the radio as an alarm signal. The alarm sounds even if the phone is turned off.

#### To set the alarm

- From standby select **Menu** > **Organizer** > **Alarms**.
- Scroll to an alarm and select **Edit**.
- Scroll to **Time**: and select **Edit**.
- Enter a time and select **OK** > **Save**.

#### To set the alarm signal

- From standby select **Menu** > **Organizer** > **Alarms**.
- Scroll to an alarm and select **Edit**.
- Scroll to the **♪** tab.
- Scroll to **Alarm signal**: and select **Edit**.
- Find and select an alarm signal. Select **Save**.

#### To silence the alarm

- When the alarm sounds, press any key.
- To repeat the alarm, select **Snooze**.

#### To turn off the alarm

- When the alarm sounds, select **Turn Off**.

30

### Ringtones and themes

Themes are used to change the appearance of the screen.

#### To select a ringtone

- From standby select **Menu** > **Settings** > the **Sounds & alerts** tab > **Ringtones** and select a ringtone.

#### To set the ring volume

- From standby select **Menu** > **Settings** > the **Sounds & alerts** tab > **Ring volume** and select an option.

#### To set the vibrating alert

- From standby select **Menu** > **Settings** > the **Sounds & alerts** tab > **Vibrating alert** and select an option.

#### To select a key sound

- From standby select **Menu** > **Settings** > the **Sounds & alerts** tab > **Key sound** and select an option.

#### To select a theme

- From standby select **Menu** > **Settings** > the **Display** tab > **Themes** and select a theme.

#### To use a picture taken with camera as wallpaper

- From standby select **Menu** > **Organizer** > **File manager** > **Camera album**.
- Scroll to a picture and select **Options** > **Use as** > **Wallpaper**.

31

### Emergency calls

Your phone supports international emergency numbers, for example, 112 and 911. These numbers can normally be used to make emergency calls in any country, with or without the SIM card inserted, if a GSM network is within range.

#### To make an emergency call

- From standby enter 112 (the international emergency number) and press **☒**.

#### To view or edit your local emergency numbers

- From standby press **☒**.
- Scroll to **New contact** and select **Options** > **Special numbers** > **Emergency nos**.

32

## Locks

### SIM card lock

The SIM card lock protects your subscription, but not your phone itself, from unauthorized use. If you change SIM cards, the phone still works with the new SIM card. Most SIM cards are locked at the time of purchase. If the SIM card lock is on, you have to enter a PIN (Personal Identity Number) every time you turn on your phone. If you enter your PIN incorrectly three times in a row, the SIM card is blocked. This is indicated by the message **PIN blocked. To unblock, enter your PUK code provided by your network operator**. To unblock it, enter your PUK (Personal Unblocking Key). Your PIN and PUK are supplied by your network operator.

- ! If the message **Wrong PIN Attempts remaining: appears** when you edit your PIN, you entered the PIN or PIN2 incorrectly.

#### To unblock your SIM card

- When **PIN blocked. To unblock, enter your PUK code provided by your network operator.** is displayed, enter your PUK and select **OK**.
- Enter a new PIN and select **OK**.
- Re-enter the new PIN to confirm and select **OK**.

#### To turn the SIM card lock on

- From standby select **Menu** > **Settings** > the **General** tab > **Security** > **SIM lock** > **Protection** > **On**.
- Enter your PIN and select **OK**.

33

### Phone lock

The phone lock protects the phone against unauthorized use if it is stolen and the SIM card is exchanged. You can change the phone lock code (which is 0000 by default) to any four-digit personal code. If the phone lock is set to **Automatic**, you do not need to enter your phone lock code until a different SIM card is inserted in the phone.

#### To edit your PIN2

- From standby select **Menu** > **Settings** > the **General** tab > **Security** > **SIM lock** > **Change PIN2**.
- Enter your PIN2 and select **OK**.
- Enter a new PIN2 and select **OK**.
- Re-enter the new PIN2 to confirm and select **OK**.

#### To edit your phone lock code

- From standby select **Menu** > **Settings** > the **General** tab > **Security** > **Phone lock** > **Change code**.
- Enter the current code and select **OK**.
- Enter a new code and select **OK**.
- Re-enter the new code to confirm and select **OK**.

- ! If you forget your new code, you have to take your phone to your local Sony Ericsson retailer.

#### To unlock the phone

- From standby select **Menu** > **Settings** > the **General** tab > **Security** > **Phone lock** > **Protection** > **Off**.
- Enter your phone lock code and select **OK**.

34

## Troubleshooting

Some problems require that you call your service provider, but you can correct most problems yourself. Remove the SIM card before handing your phone in for repair. Go to [www.sonyericsson.com/support](http://www.sonyericsson.com/support) for more information.

#### Memory capacity and speed

If you have not restarted the phone for a while, you may experience problems with its memory capacity and speed. You can restart the phone to improve its capacity.

- Turn the phone off and remove the battery cover.
- Remove the phone battery and then put it back in place.
- Replace the battery cover and turn the phone on.

#### Master reset

If you experience problems with your phone such as screen flickering or freezing and navigation problems you should reset the phone.

- From standby select **Menu** > **Settings** > the **General** tab > **Master reset** > **Reset settings** and select an option.

- ! **Reset settings will reset all changes that you have made in your phone to default.**

**Reset all will delete all user data as contacts, messages, pictures and sounds in your phone.**

### Sony Ericsson

Sony Ericsson Mobile Communications AB  
SE-221 88 Lund, Sweden



1210-2648.1

Printed in XXXX

29

30

31

32

33

34

30

31

32

33

34

35

30

31

32

33

34

35

36

### FCC Statement

This device complies with Part 15 of the FCC rules. Operation is subject to the following conditions:  
(1) This device may not cause harmful interference, and  
(2) This device must accept any interference received, including interference that may cause undesired operation.

Any change or modification not expressly approved by Sony Ericsson may void the user's authority to operate the equipment. This equipment has been tested and found to comply with the limits for a Class B digital device, pursuant to Part 15 of the FCC Rules. These limits are designed to provide reasonable protection against harmful interference in a residential installation. This equipment generates, uses and can radiate radio frequency energy and, if not installed and used in accordance with the instructions, may cause harmful interference to radio communications. However, there is no guarantee that interference will not occur in a particular installation. If this equipment does cause harmful interference to radio or television reception, which can be determined by turning the equipment off and on, the user is encouraged to try to correct the interference by one or more of the following measures:

- Reorient or relocate the receiving antenna.
- Increase the separation between the equipment and receiver.
- Connect the equipment into an outlet on a circuit different from that to which the receiver is connected.
- Consult the dealer or an experienced radio/TV technician for help.

#### Insert SIM

Your SIM card is not inserted correctly or may be damaged or dirty. Try one or more of the following:

- Remove the SIM card and insert it correctly.
- Clean the connectors on the SIM card and phone with a soft brush, a cloth or a cotton bud.
- Check if the SIM card is damaged.
- Contact your network operator to get a new SIM card.

37

### FCC Statement

This device complies with Part 15 of the FCC rules. Operation is subject to the following conditions:  
(1) This device may not cause harmful interference, and  
(2) This device must accept any interference received, including interference that may cause undesired operation.

Any change or modification not expressly approved by Sony Ericsson may void the user's authority to operate the equipment. This equipment has been tested and found to comply with the limits for a Class B digital device, pursuant to Part 15 of the FCC Rules. These limits are designed to provide reasonable protection against harmful interference in a residential installation. This equipment generates, uses and can radiate radio frequency energy and, if not installed and used in accordance with the instructions, may cause harmful interference to radio communications. However, there is no guarantee that interference will not occur in a particular installation. If this equipment does cause harmful interference to radio or television reception, which can be determined by turning the equipment off and on, the user is encouraged to try to correct the interference by one or more of the following measures:

- Reorient or relocate the receiving antenna.
- Increase the separation between the equipment and receiver.
- Connect the equipment into an outlet on a circuit different from that to which the receiver is connected.
- Consult the dealer or an experienced radio/TV technician for help.

#### Insert SIM

Your SIM card is not inserted correctly or may be damaged or dirty. Try one or more of the following:

- Remove the SIM card and insert it correctly.
- Clean the connectors on the SIM card and phone with a soft brush, a cloth or a cotton bud.
- Check if the SIM card is damaged.
- Contact your network operator to get a new SIM card.

37

### Industry Canada Statement

This device complies with RSS-210 of Industry Canada. Operation is subject to the following two conditions: (1) this device may not cause interference, and (2) this device must accept any interference, including interference that may cause undesired operation of the device. This Class B digital apparatus complies with Canadian ICES-003. Cet appareil numérique de la classe B est conforme à la norme NMB-003 du Canada.

#### Sony Ericsson R300a

GSM 850/1800/1900

This User guide is published by Sony Ericsson Mobile Communications AB or its local affiliated company, without any warranty. Improvements and changes to this User guide necessitated by typographical errors, inaccuracies of current information, or improvements to programs and/or equipment, may be made by Sony Ericsson Mobile Communications AB at any time and without notice. Such changes will, however, be incorporated into new editions of this User guide. All rights reserved.

© Sony Ericsson Mobile Communications AB, 2008

Publication number: 1210-2648.1

Please note: Some of the services in this User guide are not supported by all networks. This also applies to the GSM International Emergency Number 112. Please contact your network operator or service provider if you are in doubt whether you can use a particular service or not. Please read the *Important information* before you use your mobile phone.

All illustrations are for illustration only and may not accurately depict the actual phone.

Your mobile phone has the capability to download, store and forward additional content, e.g. ringtones. The use of such content may be restricted or prohibited by rights of third parties, including but not limited to restriction under applicable copyright laws. You, and not Sony Ericsson, are entirely responsible for additional content that you download to or forward from your mobile phone. Prior to your use of any additional content, please verify that your intended use is properly licensed or is otherwise authorized. Sony Ericsson does not guarantee the accuracy, integrity or quality of any additional content or any other third party content. Under no circumstances will Sony Ericsson be liable in any way for your improper use of additional content or other third party content.

Sony is a trademark or registered trademark of Sony Corporation. Ericsson is a trademark or registered trademark of Telefonaktiebolaget LM Ericsson. The Predictive Text Technology is used under license from ZI Corporation. The Bluetooth word mark and logos are owned by the Bluetooth SIG, Inc. and any use of such marks by Sony Ericsson is under license. The Liquid Identity logo and TrackID are trademarks or registered trademarks of Sony Ericsson Mobile Communications AB. TrackID™ is powered by Graecote Mobile. This product is protected by certain intellectual property rights of Microsoft. Use or distribution of such technology outside of this product is prohibited without a license from Microsoft. Content owners use Windows Media digital rights management technology (WM DRM) to protect their intellectual property, including copyrights. This device uses WM DRM software to access WM DRM-protected content. If the WM DRM software fails to protect the content, content owners may ask Microsoft to revoke the software's ability to use WM DRM to play or copy protected content. Revocation does not affect unprotected content. When you download licenses for protected content, you agree that Microsoft may include a revocation list with the licenses. Content owners may require you to upgrade WM DRM to access their content. If you decline an upgrade, you will not be able to access content that requires the upgrade. MPEG Layer-3 audio decoding technology licensed from Fraunhofer IIS and Thomson.

Export Regulations: Software, including technical data, is subject to U.S. export control laws, including the U.S. Export Administration Act and its associated regulations, and may be subject to export or import regulations in other countries. Customer agrees to comply strictly with all such regulations and acknowledges that it has the responsibility to obtain licenses to export, reexport, or import Software. Software may not be downloaded, or otherwise exported or re-exported (i) into, or to a national or resident of, Cuba, Iraq, Iran, North Korea, Libya, Sudan, Syria (as such listing may be revised from time to time) or any country to which the U.S. has embargoed goods; or (ii) to anyone on the U.S. Treasury Department's list of Specially Designated Nations or the U.S. Commerce Department's Table of Denial Orders. Restricted Rights: Use, duplication or disclosure by the United States government is subject to the restrictions as set forth in the Rights in Technical