

Prepare the phone

Congratulations on your purchase of the Sony Ericsson T250a. For additional phone content, go to www.sonyericsson.com/fun. Register now to get free online storage and special offers at www.sonyericsson.com/myphone. For product support, go to www.sonyericsson.com/support.

Instruction symbols
The following instruction symbols appear in this User guide:

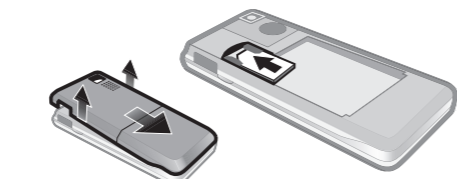
- > Use the navigation key to scroll and select.
- ⬆️ Press the navigation key up.
- ⬇️ Press the navigation key down.
- ⬅️ Press the navigation key to the left.
- ➡️ Press the navigation key to the right.

- ! **Note**
- 💡 **Tip**
- ⚠️ **Warning**

Indicates that a service or function is network- or subscription-dependent. All menus or functions may not be available in your phone. Consult your network operator for more information.

2

To insert the SIM card and battery



- Remove the battery cover. Slide the SIM card into its holder with the contacts facing down.

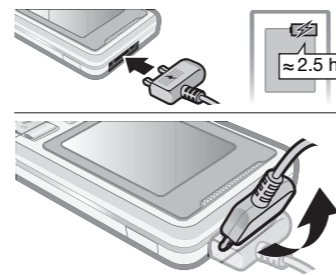


- Insert the battery with the label side up and the connectors facing each other. Replace the battery cover as shown in the picture.

! **Do not force the battery cover into place. Slide the battery cover carefully onto the phone and close it.**

3

Charge the battery



- The phone battery is partly charged when you buy it. Connect the charger to the phone. It takes approximately 2.5 hours to fully charge the battery. Press a key to illuminate the screen.
- To remove the charger, tilt the plug upwards.

! **You can use the phone during charging. You can charge the battery for more or less than 2.5 hours. Interrupted charging will not damage the battery.**

4

Turn the phone on

- Press and hold down **Power**.
- Enter your PIN if requested. To correct mistakes, select **Delete**.
- Select **OK**.
- Select a language.
- Enter the time and date and select **Save**.



To turn the phone off
• Press and hold down **Power**.

Standby

After you have turned the phone on and entered your PIN, the name of your operator appears on the screen. This is called standby. You can now make and receive calls.

5

SIM and PIN

SIM card

The SIM (Subscriber Identity Module) card, which you get from your network operator, contains information about your subscription. Always turn off your phone and detach the charger before you insert or remove the SIM card.



! **You can save contacts on the SIM card before removing it from your phone. Contacts may also be saved in the phone memory. See Contacts on page 17.**

PIN code

You may need a PIN (Personal Identification Number) to activate the services in your phone. Your PIN is supplied by your network operator. Each PIN digit appears as *, unless it starts with emergency number digits, for example, 112 or 911. You can call an emergency number without entering a PIN.

! **If you enter the wrong PIN three times in a row, PIN blocked. Enter PUK provided by your operator. To unlock it, you need to enter your PUK (Personal Unlocking Key).**

6

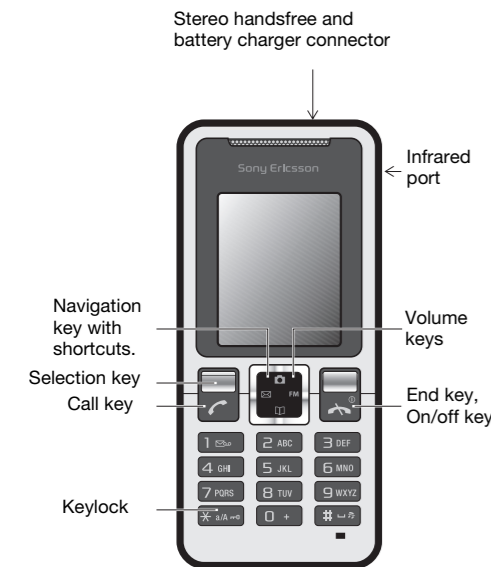
Menu overview

- Extras**
 - Calendar
 - Timer
 - Stopwatch
 - Calculator
 - My files
 - My games
- Internet**
 - Homepage
 - Bookmarks
 - Go to URL
 - Edit bookmark
 - Show pictures
 - Push access
 - Push inbox
 - Clear cache
 - Internet profile
- FM radio**
- Camera**
 - Take pic.
 - Camera pics
 - Slide show
- Messaging**
 - Text message
 - Picture message
 - Settings
- Alarms**
 - Text message
 - Wallpaper
 - Theme
 - Time and date
 - Language
 - Select network
 - Infrared port
 - Advanced
 - Phone status
- Calls**
 - Call list
 - Time and cost
 - Call settings
- Contacts**
 - View contacts
 - Find contact
 - Add contact
 - My number
 - Voicemail
 - Delete contacts
 - Speed dial
 - Copy all contacts
 - Send contacts
 - Settings
- Settings**
 - Sound & alerts
 - Wallpaper
 - Theme
 - Time and date
 - Language
 - Select network
 - Infrared port
 - Advanced
 - Phone status

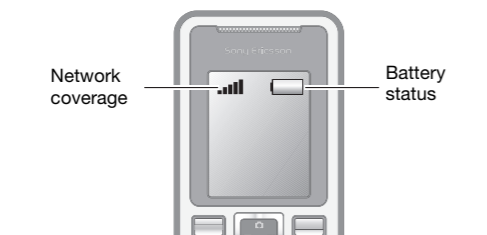
Some menus and icons in this document may vary depending on operator, network or subscription.

7

Phone overview



Network coverage



The network bars show the strength of the GSM network in your area. Try moving to another location if you have trouble calling and network coverage is poor. **No network** means you are not in range of a network.

- |||| = Good network coverage
- ||| = Average network coverage

Battery status

- 🔋 = The phone battery is fully charged
- 🔋 = The phone battery is empty

8

9

Screen icons

These icons may appear on the screen.

Icon	Description
🔋	Battery icon. A completely green icon means that the battery is fully charged
📞	You have missed a call
📞	Divert calls is activated
🔇	The phone is set to silent
🔒	The keypad is locked
✉️	You have received a new text message
🖼️	You have received a new picture message
🕒	An alarm is activated
📞	Ongoing call
🔊	The loudspeaker is on
📻	The FM radio is playing
📡	The Infrared port is activated

10

Shortcuts

From standby you can use the navigation keys to go directly to a function:

- Press **Call** to write a text or picture message.
- Press **Camera** to go to the camera.
- Press **FM** to play the FM radio.
- Press **Contacts** to go to your contacts.

To navigate the menus
• From standby select **Menu**.

To go back one step in the menu
• Select **Back**.

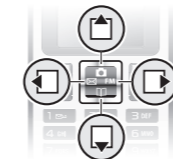
To return to standby
• Press **Power**.

To lock the keypad
• Press **Power** and select **Lock keys**.

To unlock the keypad
• Press **Power** and select **Unlock**.

To set the phone to silent
• Press and hold down **Power**.

To call your voicemail service
• Press and hold down **Power**.



11

Calling

You must turn on the phone and be within range of a network.

To make a call
1 From standby enter the area code and phone number.
2 Press **Call**.

To end a call
• Press **Power**.

To answer a call
• Press **Call**.

To reject a call
• Press **Power**.

To turn off the ringtone when receiving a call
• Select **Silent** to turn off the ringtone without answering the call.

To turn the loudspeaker on during a call
• Select **Options** > **Turn on speaker**.

! **Do not hold the phone to your ear when using the loudspeaker. This could damage your hearing.**

To change the ear speaker volume during a call
• Press **Call** or **Power**.



12

Camera

Your phone has a digital camera to take pictures to save or send. Pictures taken with the camera are saved in **Camera pics**. The format is JPEG.

- From standby press and hold down **Camera** until a + sign appears on the screen.
- Enter the country code, area code (without the first zero) and phone number.
- Press **Call**.

To view a missed call
When **Missed call** is displayed, select **Details**. To call back scroll to the number and press **Call**.

Call list
You can view information about recent calls.

To call a number from the call list
1 From standby press **Call**.
2 Scroll to the name or number and press **Call**.

To delete a number from the call list
1 From standby press **Call**.
2 Scroll to the name or number and select **Options** > **Delete** > **Yes**.

! **Calls to the international emergency number 112 can still be made, even when the keypad is locked.**

To start the camera and take a picture
• From standby press **Camera**. You can see the subject on the phone screen.

- Select **Take pic.** to take the picture.
- Select **Save** or **Delete**.

To save a picture
• Take a picture and select **Save**.

To delete a picture
1 From standby select **Menu** > **Camera** > **Camera pics**.

2 Scroll to a picture and select **View**.

3 Select **Options** > **Delete** > **Yes**.

To send a camera picture as picture message
1 From standby select **Menu** > **Camera** > **Camera pics**.

2 Scroll to a picture and select **View**.

3 Select **Options** > **Send message** > **Options** > **Send**.

4 Enter the **Phone number** or **Email address** select **OK** > **Send**.

! **See To send a camera picture using IR on page 31.**

14

Messaging

Text messages (SMS)

You must have a service centre number, which is supplied by your service provider and saved on the SIM card. You may have to enter the number yourself. See **Troubleshooting** on page 36.

💡 **See Entering text on page 23.**

To write and send a text message

- From standby press **Call**.
- Select **Text message**. Write the message and select **Options** > **Send message**.
- Select an option.
- Select **Options** > **Send message**.

To view a received text message

- New message** appears. Select **View**.
- Scroll to the unread message and select **Read**.
- To view messages stored in the inbox, select **Menu** > **Messaging** > **Text message** > **Inbox**.

To get delivery status of a sent message

- From standby select **Menu** > **Messaging** > **Settings** > **Delivery report**.
- Select **On**. You will be notified when a message has been successfully delivered.

15

Picture messages (MMS)

Picture messages can contain text, sound and images. They are sent using MMS to a mobile phone. You need the correct Internet settings in your phone to use this function. See **Internet** on page 32.

To create a picture message

- From standby press **Call**.
- Select **Picture messages** > **Options** and select among the options to build the message.

To send a picture message

- When the message is ready, select **Options** > **Send message**.
- Select to send the picture message to a **Phone number**: or an **Email address**.

! **Sending and receiving phones must have subscriptions that support picture messaging.**

16

Contacts

You can save contacts in the phone memory or on the SIM card. You can copy contacts from the phone memory to the SIM card or from the SIM card to the phone memory.

💡 **See Entering text on page 23.**

To add a contact

- From standby select **Menu** > **Contacts** > **Add contact**.
- Select **Save on SIM** or **Save in phone**.
- Enter the name and select **Options** > **OK**.
- Scroll to the icon below the name.
- Enter the number and select **OK**.
- Select **Save contact**.

💡 **You can enter the + sign and country code with all phonebook numbers. They can then be used abroad or at home. See To make international calls on page 13.**

To call a contact

- From standby press **Call**.
- Scroll to, or enter the first few letters of the contact.
- Press **Call**.

17

To edit a contact

- From standby press **Call**.
- Scroll to the contact and select **Select** > **Options** > **Edit**.
- Edit the information and select **Options** > **Save contact**.

To delete a contact

- From standby press **Call**.
- Scroll to the contact and select **Select** > **Options** > **Delete contact**.

To copy all contacts to the SIM card

- From standby select **Menu** > **Contacts** > **Copy all contacts** > **Copy all to SIM**.

To view your own phone number

- From standby select **Menu** > **Contacts** > **My number**.

18

Contacts memory

The number of entries you can save in **Contacts** depends on the capacity of your SIM card.

To check the Contacts memory status
• From standby select **Menu** > **Contacts** > **Settings** > **Memory status**.

Speed dialling

Speed dialling lets you select nine contacts that you can dial quickly. The contacts can be saved in positions 2-9.

! **Position 1 is set to Voicemail number as default.**

To add contacts to speed dial numbers

- From standby select **Contact** > **Speed dial**.
- Select a position number.
- Select a contact.

To speed dial

- From standby enter the position number and press **Call**.

19

FM radio

To listen to the FM radio

- Connect the handsfree to the phone.
- From standby press **FM**.

To control the radio

- Press **Call** or **Power** to search for FM radio channels.
- Press **Call** or **Power** to change the volume.

To save a FM radio channel

- Press and hold **Call** - **Power** to save it on the corresponding position. The FM radio channel is saved in **Options** > **Channels**. You can save up to 20 preset channels.

To listen to a saved FM radio channel

- When the FM radio is on, press **Call** - **Power** to listen to the FM radio channel on the corresponding position.

To exit the FM radio

- Select **Back** or press **Power**.

To minimize the FM radio on the screen

- Select **Options** > **Minimize**.
- Press **FM** to restore the FM radio on the screen.

To turn the FM radio off when minimized

- Press **FM** and select **Back**.

To view FM radio options

- When you play the FM radio, select **Options**.

20

Calendar

To add an appointment in the Calendar

- From standby select **Menu** > **Extras** > **Calendar**.
- Scroll to a date and select **Options** > **Add a note**.
- Enter your details and select **Options** > **OK**.
- Confirm the date and time with **OK**.
- Select if you want a reminder signal:
 - **Reminder** – a reminder signal will sound in immediate connection with the note.
 - **Deactivate** – no reminder signal.

To edit or delete a note

- From standby select **Menu** > **Extras** > **Calendar**.
- Scroll to the day for the note and select **Options** > **View today**. If there is more than one note, scroll to the desired note.
- Select **Options**.
- Select to **Delete** or **Edit** the note.

21

More functions

Alarm

The alarm rings even if the phone is set to silent or turned off.

To set the alarm

- 1 From standby select **Menu** > **Alarms**.
 - 2 Enter the time and select **Save**.
 - 3 Select an option.
- If **Alarm** is selected, select an alarm signal.
 - If **Recurrent alarm** is selected, select what day or days the alarm is going to sound. Scroll to the check boxes and select **Mark** or **Unmark**, then select **Done** and select an alarm signal.

! You need to keep a handsfree inserted when you select radio as an alarm signal. Loudspeaker radio will sound when you select radio alarm.

To turn the alarm off

- When the alarm sounds, select **Snooze** or **Stop**.

To set the alarm signal

- From standby select **Menu** > **Settings** > **Sound & alerts** > **Alarm sound** and select an option.

Entering text

There are two methods you can use to enter text: multitap or T9™ text input.

To change text input methods

- When you write the message, press and hold down **[*]**.

To enter text using multitap

- Press **[2]** – **[9]** until the desired character appears.
- Press **[*]** to add a space.
- Press **[123]** to enter full stops and commas.
- Press **[*]** to shift between upper case and lower case letters.
- Press **[+]** to enter the + sign.
- Press and hold down **[0]** – **[9]** to enter numbers.

To enter text using T9™ text input

- 1 For example, if you want to write the word “Jane”, press **[5]**, **[2]**, **[6]**, **[3]**.
- 2 If the word shown is the one you want, press **[*]** to accept and add a space. To accept a word without adding a space, press **[*]**. If the word shown is not the one you want, press **[*]** or **[*]** repeatedly to view alternative words. To accept a word and add a space, press **[*]**. To enter full stops and commas, press **[123]** and then **[*]** or **[*]** repeatedly.

To add items in a text message

- When you write the message, select **Options** > **Add item**.

To add symbols in a text message

- When you write the message, select **Options** > **Add symbol**.

To correct mistakes

- Select **Clear**.

To change writing language

- When you write the message, press and hold **[*]**.

Emergency calls

Your phone supports international emergency numbers, for example, 112 and 911. These numbers can normally be used to make emergency calls in any country, with or without the SIM card inserted, if a GSM network is within range.

To make an emergency call

- From standby enter 112 (the international emergency number) and press **[*]**.

To view your local emergency numbers

- From standby select **Menu** > **Calls** > **Call settings** > **Emergency nos**.

Diverting calls

You can divert calls, for example, to an answering service.

To divert calls

- 1 From standby select **Menu** > **Calls** > **Call settings** > **Divert all calls** and select an option.
- 2 Select **Activate**.

To cancel a call divert

- From standby select **Menu** > **Calls** > **Call settings** > **Divert all calls** > **Deactivate all**.

Multiple calls

Call waiting

When call waiting is used, you hear a beep if you receive a second call.

To activate call waiting

- From standby select **Menu** > **Calls** > **Call settings** > **Call waiting** > **Activate**.

To answer a second call

- During the call, select **Answer**. Your ongoing call is put on hold.

To reject a second call

- During the call, select **Busy** and continue with the ongoing call.

To make a second call

- 1 During the call, select **Options** > **Hold call** > **Options** > **Call contact**. Your ongoing call is put on hold.
- 2 Scroll to the contact and select **Options** > **Call**.

To switch between two calls

- During the call, select **Switch**.

To join two calls

- During the call, select **Options** > **Join calls**.

To end both calls

- Press **[*]** twice.

Call time and cost

To check the call time and the call cost

- From standby select **Menu** > **Calls** > **Time and cost**.

Voicemail

Callers can leave a voicemail message when you cannot answer. You can get your voicemail number from your network operator.

To enter your voicemail number

- 1 From standby select **Menu** > **Contacts** > **Voicemail**.
- 2 Enter the voicemail number that you get from your service provider and select **Save**.

To call your voicemail service

- From standby press and hold down **[123]**.

To check your voicemail number

- From standby select **Menu** > **Contacts** > **Voicemail**.

22

23

24

25

26

27

28

Ringtones and themes

Themes are used to change the appearance of the screen.

To select a ringtone

- From standby select **Menu** > **Settings** > **Sound & alerts** > **Ringtone** and select a ringtone.

To set the ring volume

- From standby select **Menu** > **Settings** > **Sound & alerts** > **Ring volume** and select an option.

To set the vibrating alert

- From standby select **Menu** > **Settings** > **Sound & alerts** > **Vibration** and select an option.

To select a key sound

- From standby select **Menu** > **Settings** > **Sound & alerts** > **Key sound** and select an option.

To select a theme

- From standby select **Menu** > **Settings** > **Theme** and select a theme.

To use a picture taken with camera as wallpaper

- 1 From standby select **Menu** > **Camera** > **Camera pics**.
- 2 Scroll to a picture and select **View**.
- 3 Select **Options** > **Set wallpaper** and select an option.

Time and date

To set the time

- 1 From standby select **Menu** > **Settings** > **Time and date** > **Time** > **Set time**.
- 2 Enter the time and select **Save**.

To set the time format

- From standby select **Menu** > **Settings** > **Time and date** > **Time** > **Time format** and select an option.

To set the date

- 1 From standby select **Menu** > **Settings** > **Time and date** > **Date** > **Set date**.
- 2 Enter the date and select **Save**.

To set the date format

- From standby select **Menu** > **Settings** > **Time and date** > **Date** > **Date format** and select an option.

Language

You can select the language for the phone menus.

To change the phone language

- 1 From standby select **Menu** > **Settings** > **Language**.
- 2 Select an option.

Infrared

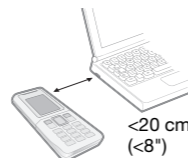
Use the infrared port to exchange contacts, pictures, themes, ringtones and files between phones or with a PC. If infrared is set to **On** but not used, the infrared port automatically turns off after 10 minutes.

To turn on infrared

- From standby select **Menu** > **Settings** > **Infrared port** > **On**.

To connect two devices using infrared

- 1 Turn on infrared in both devices.
- 2 Make sure the infrared port on your phone is facing the infrared port on the other device with a maximum distance of 20 cm (8 inches).



To transfer items using infrared

- 1 Select an item to transfer.
- 2 Select **Options** > **Send via IR**.

To send a camera picture using IR

- 1 From standby select **Menu** > **Camera** > **Camera pics**.
- 2 Scroll to a picture and select **View**.
- 3 Select **Options** > **Send via IR**.

Internet

To use the Internet and picture messaging you need the correct settings in your phone. If settings are not in your phone, you can:

- Receive settings in a text message (SMS) from your network operator.
- Use a computer to go to www.sonyericsson.com/support to request that a text message with the settings is sent to your phone.

To install settings

- 1 When **New settings received** appears, select **Yes**.
- 2 From standby select **Menu** > **Internet** > **Internet profile** and select a profile to use.
- 3 If you install settings for picture messages, select a message server.

To start browsing

- 1 From standby select **Internet** > **Go to URL**.
- 2 Enter a Web address or select an already used Web address.

To stop browsing

- When you browse, select **Back** until you exit the Internet.

Locks

SIM card lock

The SIM card lock protects your subscription, but not your phone itself, from unauthorized use. If you change SIM cards, the phone still works with the new SIM card. Most SIM cards are locked at the time of purchase. If the SIM card lock is on, you have to enter a PIN (Personal Identity Number) every time you turn on your phone. If you enter your PIN incorrectly three times in a row, the SIM card is blocked. This is indicated by the message **PIN blocked. Enter PUK provided by your operator**. To unblock it, enter your PUK (Personal Unblocking Key). Your PIN and PUK are supplied by your network operator.

! If the message **Wrong code. Attempts remaining: [X]** appears when you edit your PIN, you entered the PIN or PIN2 incorrectly.

To unblock your SIM card

- 1 When **PIN blocked. Enter PUK provided by your operator** is displayed, enter your PUK and select **OK**.
- 2 Enter a new PIN and select **OK**.
- 3 Re-enter the new PIN to confirm and select **OK**.

To turn the SIM card lock on

- 1 From standby select **Menu** > **Settings** > **Advanced** > **Security** > **SIM lock** > **Protection** > **On**.
- 2 Enter your PIN and select **OK**.

To edit your PIN

- 1 From standby select **Menu** > **Settings** > **Advanced** > **Security** > **SIM lock** > **Change PIN**.
- 2 Enter your PIN and select **OK**.
- 3 Enter a new PIN and select **OK**.
- 4 Re-enter the new PIN to confirm and select **OK**.

To edit your PIN2

- 1 From standby select **Menu** > **Settings** > **Advanced** > **Security** > **SIM lock** > **Change PIN2**.
- 2 Enter your PIN2 and select **OK**.
- 3 Enter a new PIN2 and select **OK**.
- 4 Re-enter the new PIN2 to confirm and select **OK**.

Phone lock

The phone lock protects the phone against unauthorized use if it is stolen and the SIM card is exchanged. You can change the phone lock code (which is 0000 by default) to any four-digit personal code.

If the phone lock is set to **Automatic**, you do not need to enter your phone lock code until a different SIM card is inserted in the phone.

To turn the phone lock on

- 1 From standby select **Menu** > **Settings** > **Advanced** > **Security** > **Phone lock** > **Protection** > **On**.
- 2 Enter the phone lock code and select **OK**.

To edit your phone lock code

- 1 From standby select **Menu** > **Settings** > **Advanced** > **Security** > **Phone lock** > **Change code**.
- 2 Enter the current code and select **OK**.
- 3 Enter a new code and select **OK**.
- 4 Re-enter the new code to confirm and select **OK**.

! If you forget your new code, you have to take your phone to your local Sony Ericsson retailer.

To unlock the phone

- 1 From standby select **Menu** > **Settings** > **Advanced** > **Security** > **Phone lock** > **Protection** > **Off**.
- 2 Enter your phone lock code and select **OK**.

29

30

31

32

33

34

35

Troubleshooting

Some problems require that you call your service provider, but you can correct most problems yourself. Remove the SIM card before handing your phone in for repair.

Memory capacity and speed

If you have not restarted the phone for a while, you may experience problems with its memory capacity and speed. You can restart the phone to improve its capacity.

- 1 Turn the phone off and remove the battery cover.
- 2 Remove the phone battery and then put it back in place.
- 3 Replace the battery cover and turn the phone on.

Master reset

If you experience problems with your phone such as screen flickering or freezing and navigation problems you should reset the phone.

- From standby select **Menu** > **Settings** > **Advanced** > **Master reset** > **Reset settings** and select an option.

! **Reset settings** will reset all changes that you have made in your phone to default. **Reset all** will delete all user data as contacts, messages, pictures and sounds in your phone.

The phone turns itself off.

If your phone turns itself off when being transported, something in your pocket or bag has activated the on/off key. Turn the automatic keylock on. Select **Menu** > **Settings** > **Advanced** > **Auto keylock** > **On**.

I cannot turn the phone on, what should I do?

Try charging the phone until it has finished charging. Attach the charger (make sure the power icon on the charger is facing upwards) and charge the phone for 2.5 hours. The battery icon on the screen may not appear until the phone has charged for 30 minutes.

What is my phone lock code?

A phone lock protects your phone against unauthorized use. If a different SIM card is inserted in the phone, the phone lock code has to be entered. The default phone lock code is 0000.

I cannot send text messages (SMS)

Make sure you have a valid service centre number in your phone.

- 1 From standby select **Menu** > **Messaging** > **Settings** > **Text message** > **Service centre**. The number is shown if it is saved on the SIM card.
- 2 If there is no number shown, enter the service centre number, including the international “+” sign and country code.
- 3 Select **Save**.

I cannot use Internet or MMS

Make sure you have a phone subscription that supports data transmission, and also the correct settings in your phone.

What do these error messages mean?

PIN blocked

You have entered the wrong PIN code three times. Your SIM is now locked. Unlock your SIM with your PUK code, which is provided together with your PIN code by your network operator.

- 1 Enter your PUK code and select **OK**.
- 2 Enter a new PIN and select **OK**.
- 3 Re-enter the new PIN to confirm and select **OK**.

Insert SIM card

Your SIM card is not inserted correctly or may be damaged or dirty. Try one or more of the following:

- Remove the SIM card and insert it correctly.
- Clean the connectors on the SIM card and phone with a soft brush, a cloth or a cotton bud.
- Check if the SIM card is damaged.
- Contact your network operator to get a new SIM card.

Invalid SIM

This error message is shown in two cases:

- The phone only works with certain SIM cards. Insert the correct SIM card.
- You entered your personal unblocking key code (PUK) incorrectly 10 times in a row. Contact your operator.
- To unblock See **SIM card lock** on page 33.

Codes do not match

You have entered your PIN or PIN2 incorrectly. Enter the correct PIN or PIN2 and select **OK**. See **Locks** on page 33.

Phone locked

The phone is locked. To unlock the phone, enter your code (which is 0000 if you have not changed it) and select **OK**.

! Go to www.sonyericsson.com/support for more information.

FCC Statement

This device complies with Part 15 of the FCC rules. Operation is subject to the following two conditions:
(1) This device may not cause harmful interference, and
(2) This device must accept any interference received, including interference that may cause undesired operation.

Sony Ericsson T250a
GSM 850/1900
This User guide is published by Sony Ericsson Mobile Communications AB or its local affiliated company, without any warranty. Improvements and changes to this User guide necessitated by typographical errors, inaccuracies of current information, or improvements to programs and/or equipment, may be made by Sony Ericsson Mobile Communications AB at any time and without notice. Such changes will, however, be incorporated into new editions of this User guide. All rights reserved.
© Sony Ericsson Mobile Communications AB, 2007
Publication number: EN/LZT 108 9534 R1A.
Please note: Some of the services in this User guide are not supported by all networks. This also applies to the GSM International Emergency Number 112. Please contact your network operator or service provider if you are in doubt whether you can use a particular service or not. Please read the *Guidelines for safe and efficient use* and the *Limited warranty* chapters before you use your mobile phone. All illustrations are for illustration only and may not accurately depict the actual phone. T9™ Text Input is a trademark or a registered trademark of Tegic Communications.

www.sonyericsson.com

Sony Ericsson

Sony Ericsson Mobile Communications AB
SE-221 88 Lund, Sweden



Printed in Country

36

37

38

39

40

41

