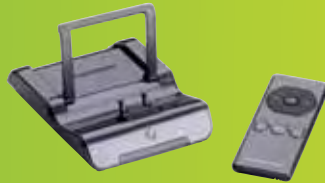


Congratulations on your purchase of the Sony Ericsson K630i.
For additional phone content, go to www.sonyericsson.com/fun.
Register now to get free online storage and special offers at
www.sonyericsson.com/myphone.
For product support, go to www.sonyericsson.com/support.

Accessories – More for your phone

Music Remote Control MRC-60

Listen to music with hi-fi sound quality and adjust music settings with a remote control.



Stereo Bluetooth™ Headset HBH-DS200

Enjoy wireless music without missing a call.



Portable Speakers MPS-70

Small yet powerful speakers that fit in your pocket.



These accessories can be purchased separately but may not be available in every market. To view the full range go to www.sonyericsson.com/accessories.

Contents

Getting started	5	Messaging	22
Assembly	5	Text messages	22
Turning on the phone	6	Picture messages	23
Help in your phone	6	Email	24
Charging the battery	7	My friends	25
Phone overview	8	Imaging	26
Menu overview	10	Camera and video recorder	26
Navigation	12	Using the camera	26
File manager	12	Camera icons and settings	27
Phone language	13	Transferring pictures	27
Entering text	13	Pictures	28
Calling	14	Entertainment	28
Making and receiving calls	14	Stereo portable handsfree	28
Contacts	16	Music and video players	28
Call list	19	TrackID™	29
Speed dial	19	Radio	29
Vicemail	20	PlayNow™	30
Voice control	20	Ringtones and melodies	31
		Sound recorder	31

Connectivity	32
Settings	32
Web feeds	32
Bluetooth™ wireless technology .	33
Using the USB cable	34
Update service	36
Troubleshooting	37
Common questions	37
Error messages	38
Important information	40
Guidelines for Safe and Efficient Use	42
End User Licence Agreement	46
Limited Warranty	47
FCC Statement	49
Declaration of Conformity	49
Index	50

Sony Ericsson K630i

UMTS 2100 GSM 900/1800/1900

This User guide is published by Sony Ericsson Mobile Communications AB or its local affiliated company, without any warranty. Improvements and changes to this User guide necessitated by typographical errors, inaccuracies of current information, or improvements to programs and/or equipment, may be made by Sony Ericsson Mobile Communications AB or its local affiliated company at any time and without notice. Such changes will, however, be incorporated into new editions of this User guide.

All rights reserved.

©Sony Ericsson Mobile Communications AB, 2007

Publication number: 1201-0276.1

Please note:

Some of the services in this User guide are not supported by all networks. *This also applies to the GSM International Emergency Number 112.*

Please contact your network operator or service provider if you are in doubt whether you can use a particular service or not.

Please read the *Guidelines for safe and efficient use* and the *Limited warranty* chapters before you use your mobile phone.

Your mobile phone has the capability to download, store and forward additional content, e.g. ringtones.

The use of such content may be restricted or prohibited by rights of third parties, including but not limited to restriction under applicable copyright laws. You, and not Sony Ericsson, are entirely responsible for additional content that you download to or forward from your mobile phone. Prior to your use of any additional content, please verify that your intended use is properly licensed or is otherwise authorized. Sony Ericsson does not guarantee the accuracy, integrity or quality of any

additional content or any other third party content. Under no circumstances will Sony Ericsson be liable in any way for your improper use of additional content or other third party content.

Bluetooth™ is a trademark or registered trademark of Bluetooth SIG Inc.

The liquid identity logo, PlayNow, and TrackID are trademarks or registered trademarks of Sony Ericsson Mobile Communications AB.

Sony, Memory Stick Micro™ and M2™ are trademarks or registered trademarks of Sony Corporation.

Ericsson is a trademark or registered trademark of Telefonaktiebolaget LM Ericsson.

Adobe® Photoshop® Album Starter Edition is a registered trademark of Adobe Systems Incorporated.

ActiveSync, Microsoft, Windows, PowerPoint, Outlook and Vista are trademarks or registered trademarks of Microsoft Corporation in the US and other countries.

T9™ Text Input is a trademark or a registered trademark of Tegic Communications. T9™ Text Input is licensed under one or more of the following: U.S. Pat. Nos. 5,818,437, 5,953,541, 5,187,480, 5,945,928, and 6,011,554; Canadian Pat. No. 1,331,057, United Kingdom Pat. No. 2238414B; Hong Kong Standard Pat. No. HK0940329; Republic of Singapore Pat. No. 51383; Euro.Pat. No. 0 842 463(96927260.8) DE/DK, FI, FR, IT, NL, PT, ES, SE, GB; and additional patents are pending worldwide.

Java and all Java based trademarks and logos are trademarks or registered trademarks of Sun Microsystems, Inc. in the U.S. and other countries.

End-user license agreement for Sun™ Java™ J2ME™.

Restrictions: Software is confidential copyrighted information of Sun and title to all copies is retained by Sun and/or its licensors. Customer shall not modify, decompile, disassemble, decrypt, extract, or otherwise reverse engineer Software. Software may not be leased, assigned, or sublicensed, in whole or in part.

Export Regulations: Software, including technical data, is subject to U.S. export control laws, including the U.S. Export Administration Act and its associated regulations, and may be subject to export or import regulations in other countries. Customer agrees to comply strictly with all such regulations and acknowledges that it has the responsibility to obtain licenses to export, re-export, or import Software. Software may not be downloaded, or otherwise exported or re-exported (i) into, or to a national or resident of, Cuba, Iraq, Iran, North Korea, Libya, Sudan, Syria (as such listing may be revised from time to time) or any country to which the U.S. has embargoed goods; or (ii) to anyone on the U.S. Treasury Department's list of Specially Designated Nations or the U.S. Commerce Department's Table of Denial Orders.

Restricted Rights: Use, duplication or disclosure by the United States government is subject to the restrictions as set forth in the Rights in Technical Data and Computer Software Clauses in DFARS 252.227-7013(c) (1) (ii) and FAR 52.227-19(c) (2) as applicable.

Other product and company names mentioned herein may be the trademarks of their respective owners.


Any rights not expressly granted herein are reserved. All illustrations are for illustration only and may not accurately depict the actual phone.


Instruction symbols

These symbols appear in the User guide.

 Note

 Tip

 Warning

 A service or function is network- or subscription-dependent. Contact your network operator for details.

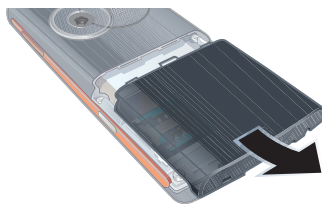
> Use a selection or navigation key to scroll and select. See *Navigation* on page 12.

Getting started

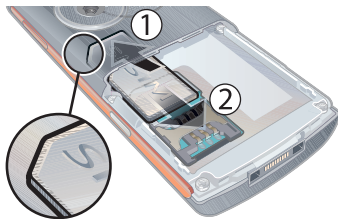
Assembly

Before you start using your phone, you need to insert a SIM card and the battery.

To insert the SIM card

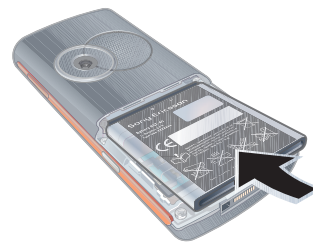


- 1 Remove the battery cover.

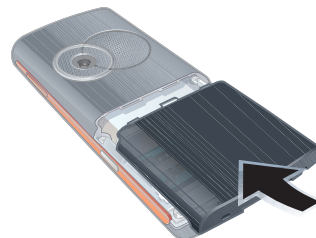


- 2 Slide the SIM card forward (1), and then backwards under the holder (2) - with the gold-coloured contacts facing down.

To insert the battery



- 1 Insert the battery with the label side up and the connectors facing each other.



- 2 Close and slide the battery cover into place.

Turning on the phone

To turn on the phone



- 1 Press and hold down ①.
- 2 Select a mode:
 - Normal – full functionality.
 - Flight mode – limited functionality.
- 3 Enter your SIM card PIN, if requested and select **OK**.
- 4 Select a language.
- 5 Select **Continue** > **Yes** to use the setup wizard while settings are downloaded.

💡 If you want to correct a mistake when you enter your PIN, press **(C)**.

Standby

After you have turned your phone on and entered your PIN, the name of the network operator appears. This view is called standby.

Help in your phone

Help and information are available in your phone. See *Navigation* on page 12.

To use the setup wizard

- 1 From standby select **Menu** > **Settings** > the **General** tab > **Setup wizard**.
- 2 Select an option.

To view information about functions

- Scroll to a function and select **Info**, if available. In some cases, **Info** appears under **Options**.

To view the phone demonstration

- From standby select **Menu** > **Entertainment** > **Demo tour**.

To view status information

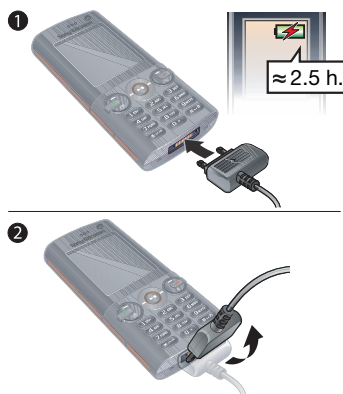
- From standby press the volume key up.

Charging the battery

The phone battery is partly charged when you buy it.

To charge the battery

💡 *You can use your phone while it is charging. You can charge the battery at any time and for more or less than 2.5 hours. You can interrupt the charging without damaging the battery.*



- 1 Connect the charger to the phone. It takes approximately 2.5 hours to fully charge the battery. Press a key to view the screen.
- 2 Remove the charger by tilting the plug upwards.

Phone overview

- 1 Video call camera
- 2 Ear speaker
- 3 Screen
- 4 Selection keys
- 5 Call key
- 6 Activity menu
- 7 Navigation key
- 8 Keylock key
- 9 Volume, digital zoom keys
- 10 End key
- 11 Camera key
- 12 C key (Clear)
- 13 Silent key
- 14 Connector for charger, handsfree and USB cable



8 Getting started