

## Contents

<b>Getting started .....</b>	<b>5</b>	Restricted dialling .....	26
Assembly .....	5	Fixed dialling .....	27
Turning on the phone .....	6	Call time and cost .....	27
Help in your phone .....	7	Showing or hiding your phone number .....	28
Charging the battery .....	7	<b>Messaging.....</b>	<b>28</b>
Phone overview .....	8	Text messages .....	29
Menu overview .....	10	Picture messages .....	29
Navigation .....	12	Message options .....	30
File manager .....	13	Templates .....	31
Phone language .....	15	Voice messages .....	31
Entering text .....	15	Email .....	31
<b>Calling.....</b>	<b>16</b>	My friends .....	33
Making and receiving calls .....	16	<b>Imaging.....</b>	<b>35</b>
Contacts .....	18	Camera and video recorder .....	35
Call list .....	22	Using the camera .....	35
Speed dial .....	22	Camera icons and settings .....	36
Vicemail .....	22	Camera shortcuts .....	36
Voice control .....	23	Transferring pictures .....	36
Diverting calls .....	24	Camera printing .....	37
More than one call .....	25	Pictures .....	38
My numbers .....	26	PhotoDJ™ and VideoDJ™ .....	39
Accept calls .....	26	Themes .....	39

<b>Entertainment .....</b>	<b>40</b>	<b>More features.....</b>	<b>57</b>
Stereo portable handsfree .....	40	Flight mode .....	57
Music player .....	40	Location services .....	58
Video player .....	40	Alarms .....	58
Music and video controls .....	40	Calendar .....	59
Transferring music from a computer .....	42	Notes .....	60
TrackID™ .....	43	Tasks .....	61
Radio .....	43	Profiles .....	61
PlayNow™ .....	44	Time and date .....	62
Ringtones and melodies .....	44	Locks .....	62
MusicDJ™ .....	45	<b>Troubleshooting.....</b>	<b>64</b>
Sound recorder .....	45	Common questions .....	64
Games .....	46	Error messages .....	67
Applications .....	46	<b>Important information.....</b>	<b>68</b>
<b>Connectivity.....</b>	<b>47</b>	Guidelines for Safe and Efficient Use .....	70
Settings .....	47	End User Licence Agreement .....	75
Phone name .....	48	Limited Warranty .....	75
Using the Internet .....	48	FCC Statement .....	78
Web feeds .....	50	Declaration of Conformity for K660i .....	78
Bluetooth™ wireless technology .....	51	<b>Index .....</b>	<b>79</b>
Using the USB cable .....	52		
Synchronizing .....	54		
Update service .....	56		

## Sony Ericsson K660i

UMTS 2100 GSM 850/900/1800/1900

This User guide is published by Sony Ericsson Mobile Communications AB or its local affiliated company, without any warranty. Improvements and changes to this User guide necessitated by typographical errors, inaccuracies of current information, or improvements to programs and/or equipment, may be made by Sony Ericsson Mobile Communications AB at any time and without notice. Such changes will, however, be incorporated into new editions of this User guide.

All rights reserved.

©Sony Ericsson Mobile Communications AB, 2007

Publication number: 1203-7558.1

Please note:

Some of the services in this User guide are not supported by all networks. *This also applies to the GSM International Emergency Number 112.*

Please contact your network operator or service provider if you are in doubt whether you can use a particular service or not.

Please read the *Guidelines for safe and efficient use* and the *Limited warranty* chapters before you use your mobile phone.

Your mobile phone has the capability to download, store and forward additional content, e.g. ringtones. The use of such content may be restricted or prohibited by rights of third parties, including but not limited to restriction under applicable copyright laws. You, and not Sony Ericsson, are entirely responsible for additional content that you download to or forward from your mobile phone. Prior to your use of any additional content, please verify that your intended use is properly licensed or is otherwise authorized. Sony Ericsson does not guarantee the accuracy, integrity or quality of any additional content or any other third party content. Under no circumstances will Sony Ericsson be liable in any way for your improper use of additional content or other third party content.

Smart-Fit Rendering is a trademark or a registered trademark of ACCESS Co., Ltd.

Bluetooth is a trademark or a registered trademark of Bluetooth SIG Inc. and any use of such mark by Sony Ericsson is under license.

The Liquid Identity logo, PlayNow, MusicDJ, PhotoDJ, TrackID and VideoDJ are trademarks or registered trademarks of Sony Ericsson Mobile Communications AB.

TrackID™ is powered by Gracenote Mobile MusicID™. Gracenote and Gracenote Mobile MusicID are trademarks or registered trademarks of Gracenote, Inc.

Sony, Memory Stick Micro™ and M2™ are trademarks or registered trademarks of Sony Corporation.

Google™ and Google Maps™ are trademarks or registered trademarks of Google, Inc.

SyncML is a trademark or registered trademark of Open Mobile Alliance LTD.

Ericsson is a trademark or registered trademark of Telefonaktiebolaget LM Ericsson.

Adobe Photoshop Album Starter Edition is either a trademark or registered trademark of Adobe Systems Incorporated in the United States and/or other countries.

Microsoft, ActiveSync, Windows, Outlook, and Vista are either registered trademarks or trademarks of Microsoft Corporation in the United States and/or other countries.

T9™ Text Input is a trademark or a registered trademark of Tegic Communications. T9™ Text Input is licensed under one or more of the following: U.S. Pat. Nos. 5,818,437, 5,953,541, 5,187,480, 5,945,928, and 6,011,554; Canadian Pat. No. 1,331,057, United Kingdom Pat. No. 2238414B; Hong Kong Standard Pat. No. HK0940329; Republic of Singapore Pat. No. 51383; Euro.Pat. No. 0 842 463(96927260.8) DE/DK, FI, FR, IT, NL, PT, ES, SE, GB; and additional patents are pending worldwide.

Java and all Java based trademarks and logos are trademarks or registered trademarks of Sun Microsystems, Inc. in the U.S. and other countries. End-user license agreement for Sun™ Java™ J2ME™.

Restrictions: Software is confidential copyrighted information of Sun and title to all copies is retained by Sun and/or its licensors. Customer shall not modify, decompile, disassemble, decrypt, extract, or otherwise reverse engineer Software. Software may not be leased, assigned, or sublicensed, in whole or in part.

Export Regulations: Software, including technical data, is subject to U.S. export control laws, including the U.S. Export Administration Act and its associated regulations, and may be subject to export or import regulations in other countries. Customer agrees to comply strictly with all such regulations and acknowledges that it has the responsibility to obtain licenses to export, re-export, or import Software. Software may not be downloaded, or otherwise exported or re-exported (i) into, or to a national or resident of, Cuba, Iraq, Iran, North Korea, Libya, Sudan, Syria (as such listing may be revised from time to time) or any country to which the U.S. has embargoed goods; or (ii) to anyone on the U.S. Treasury Department's list of Specially Designated Nations or the U.S. Commerce Department's Table of Denial Orders.

Restricted Rights: Use, duplication or disclosure by the United States government is subject to the restrictions as set forth in the Rights in Technical Data and Computer Software Clauses in DFARS 252.227-7013(c) (1) (ii) and FAR 52.227-19(c) (2) as applicable.

Other product and company names mentioned herein may be the trademarks of their respective owners.

Any rights not expressly granted herein are reserved. All illustrations are for illustration only and may not accurately depict the actual phone.


## Instruction symbols

These symbols may appear in the User guide.

 Note

 Tip

 Warning

 A service or function is network- or subscription-dependent. Contact your network operator for details.

> Use a selection or navigation key to scroll and select. See *Navigation* on page 12.

## Getting started

### Assembly

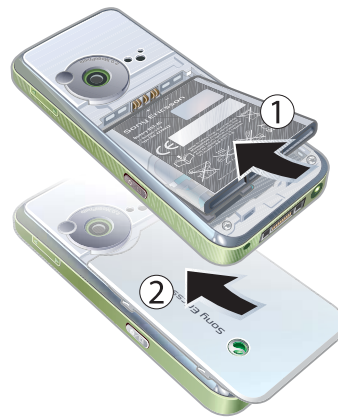
Before you start using your phone, you need to insert a SIM card and the battery.

#### To insert the SIM card



- 1 Remove the battery cover by pressing and sliding it as shown in the picture.
- 2 Slide the SIM card into its holder with the gold-coloured contacts facing down.

#### To insert the battery






- 1 Insert the battery with the label side up and the connectors facing each other.
- 2 Slide the battery cover into place.

## Turning on the phone

To turn on the phone




- 1 Press and hold down .
- 2 Enter your SIM card PIN, if requested and select **OK**.
- 3 Select a language.
- 4 Select **Cont. > Yes** to use the setup wizard while settings are downloaded.

 If you want to correct a mistake when you enter your PIN, press .

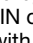
## SIM card

The SIM (Subscriber Identity Module) card, which you get from your network operator, contains information about your subscription. Always turn off your phone and detach the charger before you insert or remove the SIM card.

 You can save contacts on the SIM card before you remove it from your phone. See *To copy names and numbers to the SIM card* on page 19.

## PIN

You may need a PIN (Personal Identification Number) to activate the services in your phone. Your PIN is supplied by your network operator. Each PIN digit appears as \*, unless it starts with emergency number digits, for example, 112 or 911. You can see and call an emergency number without entering a PIN.

 If you enter the wrong PIN three times in a row, the SIM card is blocked. See *SIM card lock* on page 62.

## Startup screen

The startup screen appears when you turn your phone on. See *Using pictures* on page 38.

### Standby

After you have turned your phone on and entered your PIN, the name of the network operator appears. This view is called standby.

### Help in your phone

Help and information are available in your phone. See *Navigation* on page 12.

#### To use the setup wizard

- 1 From standby select **Menu** > **Settings** > the **General** tab > **Setup wizard**.
- 2 Select an option.

#### To view information about functions

- Scroll to a function and select **Info**, if available. In some cases, **Info** appears under **Options**.

#### To view the phone demonstration

- From standby select **Menu** > **Entertainment** > **Demo tour**.

#### To view status information

- From standby press the volume key up.


### Charging the battery

The phone battery is partly charged when you buy it.

#### To charge the battery



- 1 Connect the charger to the phone. It takes approximately 2.5 hours to fully charge the battery. Press a key to view the screen.
- 2 Remove the charger by tilting the plug upwards.

 You can use your phone while it is charging. You can charge the battery at any time and for more or less than 2.5 hours. You can interrupt the charging without damaging the battery.

## Phone overview

- 1 On/off key
  - 2 Ear speaker
  - 3 Screen
  - 4 Selection keys
  - 5 Memory card slot
  - 6 Call key
  - 7 Activity menu key
  - 8 Keylock key
  - 9 Video call camera
  - 10 End key
  - 11 C key (Clear)
  - 12 Navigation key
  - 13 Silent key
- ! See Internet keypad shortcuts on page 49

