

Congratulations on your purchase of the Sony Ericsson C702 Cyber-shot™. Enjoy 3.2 megapixel digital photography wherever you go. For additional phone content, go to www.sonyericsson.com/fun.

Register now to get a suite of tools, free online storage, special offers, news and competitions at www.sonyericsson.com/myphone.

For product support, go to www.sonyericsson.com/support.

Accessories – More for your phone

Bluetooth™ Headset HBH-PV703

Go wireless with a powerful headset.



Camera Phone Kit IPK-100

Support and enhance the use of your phone with a tripod, belt clip and compact carrying case.



Stereo Portable Handsfree HPM-65

Light design with ear-hook for a stable fit.



These accessories can be purchased separately but may not be available in every market. To view the full range go to www.sonyericsson.com/accessories.

Content

Getting started 6

Assembly	6
Turning on the phone	7
Help	8
Charging the battery	8
Phone overview	9
Menu overview	11
Navigation	13
Phone language	15
Entering text	15

Imaging 16

Camera and video recorder	16
Using the camera	17
Getting more from the camera	18
Camera icons and settings	18
Transferring pictures	19
Camera printing	20
Pictures	20
PhotoDJ™ and VideoDJ™	21

Calling 22

Making and receiving calls	22
Contacts	24
Call list	27

Speed dial	27
Voicemail	27
Voice control	28
More than one call	29
Restricted dialling	31
Call time and cost	32
Showing or hiding your phone number	32

Messaging 32

Text messages	33
Picture messages	33
Message options	34
Voice messages	35
Email	35
My friends	37
Area and cell information	38

Media player and music ... 39

Transferring content to and from a computer	39
Stereo portable handsfree	40
Music player	40
PlayNow™	41
TrackID™	41
Online music and video clips	42

Entertainment 42

Video player	42
Radio	42
Ringtones and melodies	43
MusicDJ™	43
Sound recorder	44
Games	44
Applications	44

Internet..... 45

Internet security and certificates ..	46
Web feeds	47

GPS 48

Using the GPS	48
Google Maps™ for mobile	49
Driving directions	49
More GPS features	49
Tracker	50

Connectivity..... 52

Settings	52
Phone name	52
Bluetooth wireless technology	52
Using the USB cable	54
Synchronizing	55
Update service	57

More features..... 59

Flight mode	59
File manager	59
Alarms	60
Calendar	61
Notes	62
Tasks	62
Profiles	63
Time and date	63
Theme	63
Main menu layout	64
Locks	64

Troubleshooting..... 66

Common questions	66
Error messages	68

Important information..... 69

Guidelines for Safe and Efficient Use	71
End User Licence Agreement	75
Limited Warranty	75
FCC Statement	78
Declaration of Conformity for C702 Cyber-shot™	79

Index 80

Sony Ericsson C702 Cyber-shot™

UMTS HSDPA 2100 GSM EDGE 850/900/1800/1900

This User guide is published by Sony Ericsson Mobile Communications AB or its local affiliated company, without any warranty. Improvements and changes to this User guide necessitated by typographical errors, inaccuracies of current information, or improvements to programs and/or equipment, may be made by Sony Ericsson Mobile Communications AB at any time and without notice. Such changes will, however, be incorporated into new editions of this User guide.

All rights reserved.

©Sony Ericsson Mobile Communications AB, 2008
Publication number: 1207-7309.2

Please note:

Some of the services in this User guide are not supported by all networks. *This also applies to the GSM International Emergency Number 112.*

Please contact your network operator or service provider if you are in doubt whether you can use a particular service or not.

Please read the *Important information* chapter before you use your mobile phone.

Your mobile phone has the capability to download, store and forward additional content, e.g. ringtones. The use of such content may be restricted or prohibited by rights of third parties, including but not limited to restriction under applicable copyright laws. You, and not Sony Ericsson, are entirely responsible for additional content that you download to or forward from your mobile phone. Prior to your use of any additional content, please verify that your intended use is properly licensed or is otherwise authorized. Sony Ericsson does not guarantee the accuracy, integrity or quality of any additional content or any other third party content. Under no circumstances will Sony Ericsson be liable in any way for your improper use of additional content or other third party content.

Smart-Fit Rendering is a trademark or a registered trademark of ACCESS Co., Ltd.

Bluetooth is a trademark or a registered trademark of Bluetooth SIG Inc. and any use of such mark by Sony Ericsson is under license.

The Liquid Identity logo, PlayNow, MusicDJ, PhotoDJ, TrackID and VideoDJ are trademarks or registered trademarks of Sony Ericsson Mobile Communications AB.

TrackID™ is powered by Gracenote Mobile MusicID™. Gracenote and Gracenote Mobile MusicID are trademarks or registered trademarks of Gracenote, Inc.

Cyber-shot is a trademark or registered trademark of Sony Corporation.

Lotus Notes is a trademark or a registered trademark of International Business Machines Corporation.

Sony, Memory Stick Micro™ and M2™ are trademarks or registered trademarks of Sony Corporation.

Google™ and Google Maps™ are trademarks or registered trademarks of Google, Inc.

Wayfinder and Wayfinder Navigator are trademarks or registered trademarks of Wayfinder Systems AB.

SyncML is a trademark or registered trademark of Open Mobile Alliance LTD.

Ericsson is a trademark or registered trademark of Telefonaktiebolaget LM Ericsson.

Adobe Photoshop Album Starter Edition is a trademark or registered trademark of Adobe Systems Incorporated in the United States and/or other countries.

Microsoft, ActiveSync, Windows, Outlook, and Vista are registered trademarks or trademarks of Microsoft Corporation in the United States and/or other countries.

T9™ Text Input is a trademark or a registered trademark of Tegic Communications. T9™ Text Input is licensed under one or more of the following: U.S. Pat. Nos. 5,818,437, 5,953,541, 5,187,480,

5,945,928, and 6,011,554; Canadian Pat. No. 1,331,057, United Kingdom Pat. No. 2238414B; Hong Kong Standard Pat. No. HK0940329; Republic of Singapore Pat. No. 51383; Euro.Pat. No. 0 842 463(96927260.8) DE/DK, FI, FR, IT, NL, PT, ES, SE, GB; and additional patents are pending worldwide. Java and all Java based trademarks and logos are trademarks or registered trademarks of Sun Microsystems, Inc. in the U.S. and other countries. End-user license agreement for Sun™ Java™ J2ME™.

Restrictions: Software is confidential copyrighted information of Sun and title to all copies is retained by Sun and/or its licensors. Customer shall not modify, decompile, disassemble, decrypt, extract, or otherwise reverse engineer Software. Software may not be leased, assigned, or sublicensed, in whole or in part.

Export Regulations: This product, including any software or technical data contained in or accompanying the product, may be subject to U.S. export control laws, including the U.S. Export Administration Act and its associated regulations and the U.S. sanctions programs administered by the U.S. Treasury Department's Office of Foreign Assets Control, and may be additionally subject to export or import regulations in other countries. The user and any possessor of the product agrees to comply strictly with all such regulations and acknowledges that it is their responsibility to obtain any required licenses to export, re-export, or import this product. Without limitation this product, including any software contained therein, may not be downloaded, or otherwise exported or re-exported (i) into, or to a national or resident of, or an entity in, Cuba, Iraq, Iran, North Korea, Sudan, Syria (as such listing may be revised from time to time) or any country to which the U.S. has embargoed goods; or (ii) to any person or entity on the U.S. Treasury Department's list of Specially Designated Nationals or (iii) any person or entity on any other export prohibition list that may be maintained from time

to time by the United States Government, including but not limited to the U.S. Commerce Department's Denied Persons List or Entity List, or the U.S. State Department's Nonproliferation Sanctions List.

Restricted Rights: Use, duplication or disclosure by the United States government is subject to the restrictions as set forth in the Rights in Technical Data and Computer Software Clauses in DFARS 252.227-7013(c) (1) (i) and FAR 52.227-19(c) (2) as applicable.

This product is protected by certain intellectual property rights of Microsoft. Use or distribution of such technology outside of this product is prohibited without a license from Microsoft.

Content owners use Windows Media digital rights management technology (WMDRM) to protect their intellectual property, including copyrights. This device uses WMDRM software to access WMDRM-protected content. If the WRDRM software fails to protect the content, content owners may ask Microsoft to revoke the software's ability to use WMDRM to play or copy protected content. Revocation does not affect unprotected content. When you download licenses for protected content, you agree that Microsoft may include a revocation list with the licenses. Content owners may require you to upgrade WMDRM to access their content. If you decline an upgrade, you will not be able to access content that requires the upgrade.

With respect to a Licensee offering MPEG-4 Video Decoders and/or Encoders the following notice shall be given: This product is licensed under the MPEG-4 visual patent portfolio license for the personal and non-commercial use of a consumer for (i) encoding video in compliance with the MPEG-4 visual standard ("MPEG-4 video") and/or (ii) decoding MPEG-4 video that was encoded by a consumer engaged in a personal and non-commercial activity and/or was obtained from a video provider licensed by MPEG LA to provide MPEG-4 video. No license is granted or shall be implied for any other use. Additional information

including that relating to promotional, internal and commercial uses and licensing may be obtained from MPEG LA, LLC. See <http://www.mpegla.com>.

Notice Required for the License Granted under Articles 2.1 and 2.6. As a condition to the licenses granted pursuant to Articles 2.1 and 2.6 hereof, Licensee agrees to provide to any party that receives from Licensee an AVC Royalty Product the following notice: This product is licensed under the AVC patent portfolio license for the personal and non-commercial use of a consumer to (i) encode video in compliance with the AVC standard ("AVC video") and/or (ii) decode AVC video that was encoded by a consumer engaged in a personal and non-commercial activity and/or was obtained from a video was obtained from a video provider licensed to provide AVC video. No license is granted or shall be implied for any other use. Additional information may be obtained from MPEG LA, L.L.C. See <http://www.mpegla.com>.

MPEG Layer-3 audio decoding technology licensed from Fraunhofer IIS and Thomson.

Other product and company names mentioned herein may be the trademarks of their respective owners.


Any rights not expressly granted herein are reserved. All illustrations are for illustration only and may not accurately depict the actual phone.


Instruction symbols

These symbols may appear in the User guide.

 Note

 Tip

 Warning

 A service or function is network- or subscription-dependent. Contact your network operator for details.

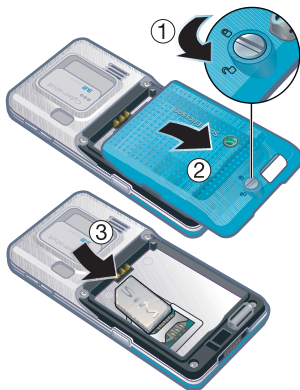
> Use a selection or navigation key to scroll and select. See *Navigation* on page 13.

Getting started

Assembly

Before you start using your phone, you need to insert a SIM (Subscriber Identity Module) card and the battery.

To insert the SIM card



- 1 Unlock the battery cover by screwing the cover lock as shown in the picture.
- 2 Remove the battery cover.
- 3 Slide the SIM card into its holder with the gold-coloured contacts facing down.

To insert the battery



- 1 Insert the battery with the label side up and the connectors facing each other.
- 2 Insert the battery cover into place.
- 3 Lock the battery cover by screwing the cover lock as shown in the picture.

Turning on the phone

To turn on the phone



- 1 Press and hold down ①.
- 2 Enter your SIM card PIN (Personal Identification Number), if requested, and select **OK**.
- 3 Select a language.
- 4 Select **Yes** to use the setup wizard while settings are downloaded.

💡 If you want to correct a mistake when you enter your PIN, press **(C)**.

SIM card

The SIM card, which you get from your network operator, contains information about your subscription. Always turn

off your phone and detach the charger before you insert or remove the SIM card.

💡 You can save contacts on the SIM card before you remove it from your phone. See *To copy names and numbers to the SIM card on page 25*.

PIN

You may need a PIN to activate the services in your phone. Your PIN is supplied by your network operator. Each PIN digit appears as *, unless it starts with emergency number digits, for example, 112 or 911. You can see and call an emergency number without entering a PIN.

! If you enter the wrong PIN three times in a row, the SIM card is locked. See *SIM card lock on page 64*.



Startup screen

The startup screen appears when you turn on your phone. See *Using pictures on page 21*.

Standby

After you have turned on your phone and entered your PIN, the name of the network operator appears. This view is called standby.

Help

In addition to this User guide, Getting started guides and more information are available at www.sonyericsson.com/support.

Help in your phone

Help and information are available in your phone. See *Navigation* on page 13.

To view tips and tricks

- 1 From standby select **Menu** > **Settings** > the **General** tab > **Setup wizard**.
- 2 Select **Tips and tricks**.

To view information about functions

- Scroll to a function and select **Info**, if available. In some cases, **Info** appears under **Options**.

To view the phone demonstration

- From standby select **Menu** > **Entertainment** > **Demo tour**.

To view status information

- From standby press the volume key up.


Charging the battery

The phone battery is partly charged when you buy it.

To charge the battery

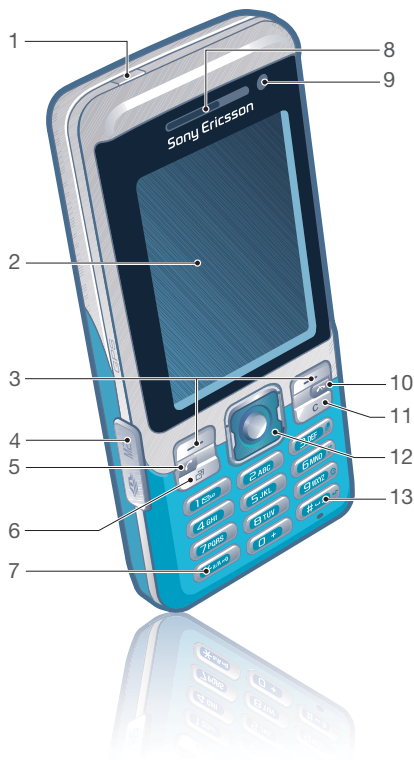


- 1 Connect the charger to the phone. It takes approximately 2.5 hours to fully charge the battery. Press a key to view the screen.
- 2 Remove the charger by tilting the plug upwards.

 You can use your phone while it is charging. You can charge the battery at any time and for more or less than 2.5 hours. You can interrupt the charging without damaging the battery.

Phone overview

- 1 On/off key
- 2 Screen
- 3 Selection keys
- 4 Memory card slot
- 5 Call key
- 6 Activity menu key
- 7 Keylock key
- 8 Ear speaker
- 9 Video call camera
- 10 End key
- 11 C key (Clear)
- 12 Navigation key
- 13 Silent key



- 14 Volume, digital zoom keys
- 15 Main camera
- 16 Camera key
- 17 Cover lock
- 18 Connector for charger, handsfree and USB cable
- 19 Strap holder



10 Getting started

Menu overview



PlayNow™*



Internet*



Entertainment

Online services*
TrackID™
Games
VideoDJ™
PhotoDJ™
MusicDJ™
Remote control
Record sound
Demo tour



Cyber-shot™



Messaging

Write new
Inbox
Email
Drafts
Outbox
Sent messages
Saved messages
My friends*
Call voicemail
Templates
Manage messages
Settings



Media

Photo
Music
Video
Games
TV*
Web feeds
Settings



Location services

Google Maps*
Navigation*
Tracker
My favourites
Status info
Log
Settings



Contacts

Myself
New contact



Radio



Calls**



All



Answered



Dialled



Missed



Organizer

File manager**

Alarms

Applications

Video call

Calendar

Tasks

Notes

Synchronization

Timer

Stopwatch

Light

Calculator

Code memo



Settings**



General

Profiles

Time & date

Language

Update service

Voice control

New events

Shortcuts

Flight mode

Security

Setup wizard

Accessibility*

Phone status

Master reset



Sounds & alerts

Ring volume

Ringtone

Silent mode

Increasing ring

Vibrating alert

Message alert

Key sound



Display

Wallpaper

Main menu layout

Theme

Startup screen

Screen saver

Clock size

Brightness

Edit line names*



Calls

Speed dial

Smart search

Divert calls

Switch to line 2*

Manage calls

Time & cost*

Show/hide my no.

Handsfree



Connectivity

Bluetooth

USB

Phone name

Network sharing

Synchronization

Device management

Mobile networks

Data communication*

Internet settings

Streaming settings

Message settings*

SIP settings

Accessories

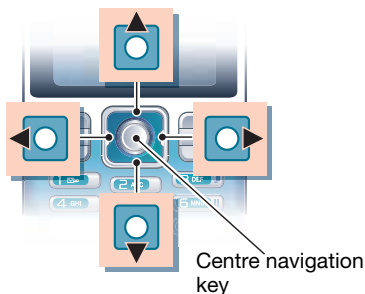
* Some menus are operator-, network- and subscription-dependent.

** You can use the navigation key to scroll between tabs in submenus. For more information, see Navigation on page 13.

Navigation

The main menus are shown as icons. Some submenus include tabs.

To navigate the phone menus



- 1 From standby select **Menu**.
- 2 Use the navigation key to move through the menus.

To select actions on the screen

- Press the left or right selection key, or the centre navigation key.

To view options for an item

- Select **Options** to, for example, edit.

To scroll between the tabs

- Scroll to a tab by pressing the navigation key left or right.

To return to standby

- Press .

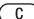
To end a function

- Press .

To navigate your media

- 1 From standby select **Menu** > **Media**.
- 2 Scroll to a menu item and press the navigation key right.
- 3 To go back, press the navigation key left.

To delete items

- Press  to delete items such as numbers, letters, pictures and sounds.

To send items

- 1 Scroll to an item such as a contact, a picture or a sound.
- 2 Select **Options** > **Send**.
- 3 Select a transfer method.

- ! *Make sure the receiving device supports the transfer method you select.*

Shortcuts

You can use keypad shortcuts to go directly to a menu. Menu numbering starts from the top left icon and moves across and then down row by row.