

Thank you for purchasing a Sony Ericsson W595 Walkman™. A slim slider phone made for you and others to enjoy your music. For additional phone content, go to www.sonyericsson.com/fun.

Register now to get a suite of tools, free online storage, special offers, news and competitions at www.sonyericsson.com/myphone.

For product support, a User guide, software and settings, go to www.sonyericsson.com/support.

Accessories – more for your phone

Stereo Bluetooth™ Headset HBH-DS205
Enjoy wireless music without missing a call

Wireless Portable Speaker MBS-200
Experience wireless music with powerful sound

Bluetooth™ Music Receiver MBR-100
Enjoy the music stored on your phone through stereo loudspeakers

These accessories can be purchased separately but may not be available in every market. To view the full range go to www.sonyericsson.com/accessories.



www.sonyericsson.com



Sony Ericsson Mobile Communications AB
SE-221 88 Lund, Sweden

1215-7485.1
Printed in XXX

Instruction symbols

These symbols may appear in the Quick guide:

- Tip
- Note
- Use the selection keys or the navigation key to scroll and select
- Press the navigation key up
- Press the navigation key down
- Press the navigation key left
- Press the navigation key right

Screen icons

- Ongoing call
- Missed call
- Handsfree connected
- Phone set to silent
- Text message received
- Picture message received
- Email message received
- Alarm activated
- Bluetooth function activated

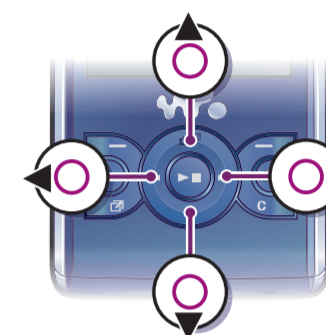
Front overview

- 1 Ear speaker
- 2 Screen
- 3 Selection keys
- 4 Call key
- 5 Activity menu key
- 6 Selection key, Walkman™ player control
- 7 Volume key
- 8 Walkman™ key
- 9 End key, On/off key
- 10 C key (Clear)
- 11 Navigation key, Walkman™ player control
- 12 Silent key



Navigate the menus

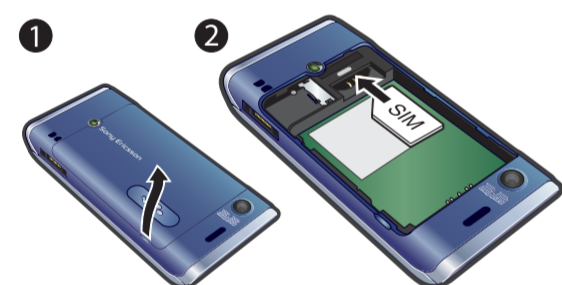
- To navigate the phone menus**
 - 1 From standby select **Menu**.
 - 2 Use the navigation key to move through the menus.
- To end a function**
 - Press .
- To return to standby**
 - Press .
- To scroll between tabs**
 - Press the navigation key left or right.



Getting started

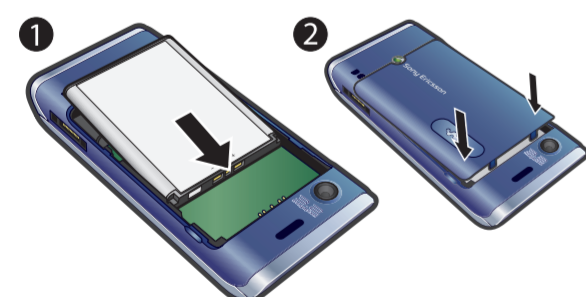
Before you start using your phone, you need to insert a SIM (Subscriber Identity Module) card and the battery.

To insert the SIM card



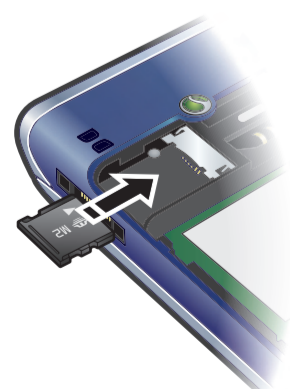
- 1 Remove the battery cover.
- 2 Slide the SIM card into its holder with the gold-coloured contacts facing down.

To insert the battery



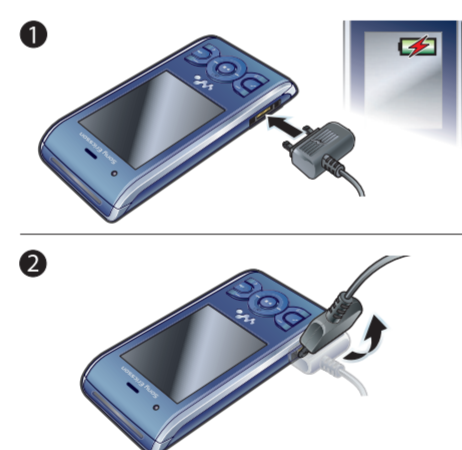
- 1 Insert the battery with the label side up and the connectors facing each other.
- 2 Slide the battery cover into place.

To insert a memory card



- Open the cover and insert the memory card with the gold-coloured contacts facing down.

To charge the battery



- 1 Connect the charger to the phone. It takes approximately 2.5 hours to fully charge the battery. Press a key to view the screen.
- 2 Remove the charger by tilting the plug upwards.

You can use your phone while it is charging. You can charge the battery at any time and for more or less than 2.5 hours. You can interrupt the charging without damaging the battery.

To turn on the phone

- 1 Press and hold down .
- 2 Enter your SIM card PIN, if requested, and select **OK**.
- 3 Select a language.
- 4 Select **Yes** to use the setup wizard.

If you want to correct a mistake when you enter your PIN, press .

After you have turned on your phone and entered your PIN, the name of the network operator appears. This view is called standby. Your phone is now ready for use.

To make a call

- 1 From standby enter a phone number (with international country/region code and area code, if applicable).
- 2 Press .

You can call numbers from your contacts and call list.

To end a call

- Press .

Menu overview

<p> PlayNow™*</p> <p>You can download ringtones, games, music, themes and wallpapers.</p>	<p> Camera</p> <p>You can take pictures and record video clips to view, save and share.</p>	<p> Radio</p> <p>You can listen to the radio with your handsfree connected to the phone.</p>	<p> Calls**</p> <p>You can view information about answered, dialled and missed calls.</p>
<p> Internet*</p> <p>You can connect to the Internet to browse for news, access Web feeds and download settings.</p>	<p> Messaging</p> <p>You can send and receive text messages, picture messages and emails.</p>	<p> Contacts</p> <p>You can save names, phone numbers and personal information.</p>	<p> Organizer</p> <p>You can stay organized by using the Calendar, Tasks, Notes and more.</p>
<p> Entertainment</p> <p>You can play games, use Location services, TrackID™, VideoDJ™, PhotoDJ™, MusicDJ™ and more.</p>	<p> Media</p> <p>You can navigate through captured photos and video clips, pictures, photo tags, music, videos and more.</p>	<p> WALKMAN™</p> <p>You can listen to music, audio books and podcasts. Use <i>Sony Ericsson Media Manager</i> to transfer content to your phone.</p>	<p> Settings**</p> <p>You can change the settings in your phone to suit your use.</p>

*Some menus are operator-, network- and subscription-dependent.
**You can use the navigation key to scroll between tabs in submenus.

Contacts

You can save names, phone numbers and personal information in **Contacts**. Information can be saved in the phone memory or on the SIM card.

You can synchronize your contacts using the *Sony Ericsson PC Suite*.

To add a phone contact

- 1 From standby press .
- 2 Scroll to **New contact** and select **Add**.
- 3 Enter the name and select **OK**.
- 4 Scroll to **New number:** and select **Add**.
- 5 Enter the number and select **OK**.
- 6 Select a number option.
- 7 Scroll between the tabs and add information to the fields.
- 8 Select **Save**.

To call a phone contact
When Chinese has been selected as the phone language
To call a contact written in Chinese characters

- 1 From standby select **Menu** > **Contacts**. Press and hold down to switch the search language to Chinese. Then enter the first strokes or all strokes of the contact you want to call (a maximum of 10 strokes).
- 2 When the contact is highlighted, press or to select a number and press or > **Options** > **Make video call**.

To call a contact written in Latin characters

- 1 From standby select **Menu** > **Contacts**. Press and hold down to switch the search language to English. Then enter the first letters or all letters of the contact you want to call (a maximum of 10 letters).

- 2 When the contact is highlighted, press or to select a number and press or > **Options** > **Make video call**.

When English has been selected as the phone language
To call a contact written in Chinese characters

- 1 From standby select **Menu** > **Contacts**. Scroll to the contact you want to call.
- 2 When the contact is highlighted, press or to select a number and press or > **Options** > **Make video call**.

To call a contact written in Latin characters

- 1 From standby select **Menu** > **Contacts**. Scroll to, or enter the first letters or all letters of the contact you want to call (a maximum of 10 letters).
- 2 When the contact is highlighted, press or to select a number and press or > **Options** > **Make video call**.

Messages

To write and send a text message

- 1 From standby press and select **Text message**.
- 2 Write the message and select **Continue** > **Contacts look-up**.
- 3 Select a recipient and select **Send**.

If you send a text message to a group, you will be charged for each member.

To create and send a picture message

- 1 From standby press and select **Picture msg.**
- 2 Enter text. To add items to the message, press , scroll and select an item.
- 3 Select **Continue** > **Contacts look-up**.
- 4 Select a recipient and select **Send**.

Walkman™

You can listen to music, audio books and podcasts. Use *Sony Ericsson Media Manager* to transfer content to and from your phone.

Stereo portable handsfree

To use the handsfree

- Connect the portable handsfree. Music stops when you receive a call and resumes when the call has ended.



Walkman™ player

To play music

- 1 From standby select **Menu > Media > Music**.
- 2 Browse by category using the navigation key.
- 3 Scroll to a track and select **Play**.

To stop playing music

- Press the centre navigation key.

To fast forward and rewind

- Press and hold down or .

To move between tracks

- Press or .

To minimize the player

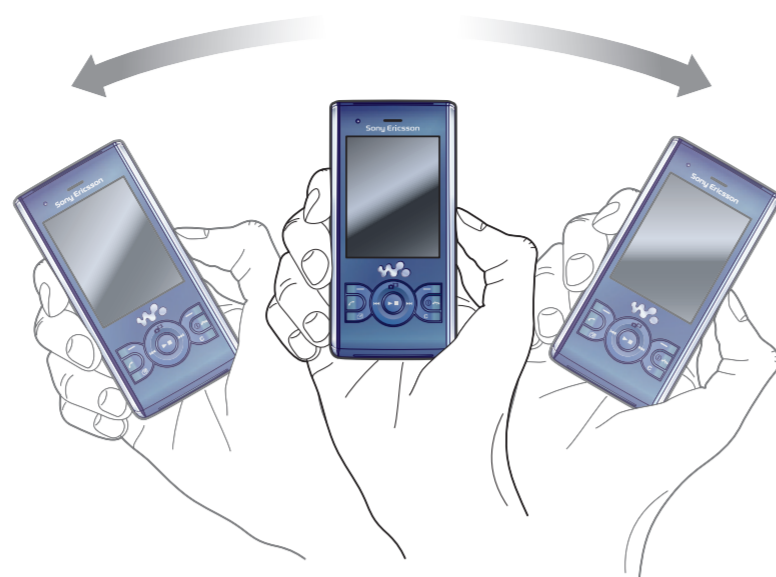
- When music is playing, press .

To return to the player

- Press .

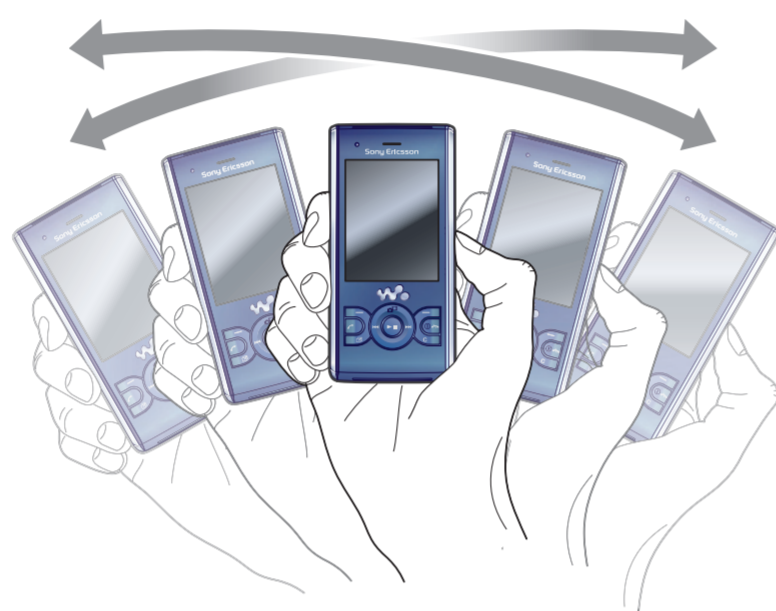
Shake control

To switch track



- When music is playing, press and hold down and move the phone to the right with a flick of your wrist to go to the next track. To go to the previous track, use the same action to the left.

To shuffle tracks



- When music is playing, press and hold down and shake your phone.

To change the volume



- 1 When music is playing, hold the phone out in front of you facing upwards.
- 2 Press and hold down and bend your arm upwards towards you to increase the volume. To decrease the volume, repeat the action in the opposite direction.

Playlists

You can create playlists to organize your music. Tracks can be added to more than one playlist.

- ! It may take a few minutes for the phone to create the playlist.

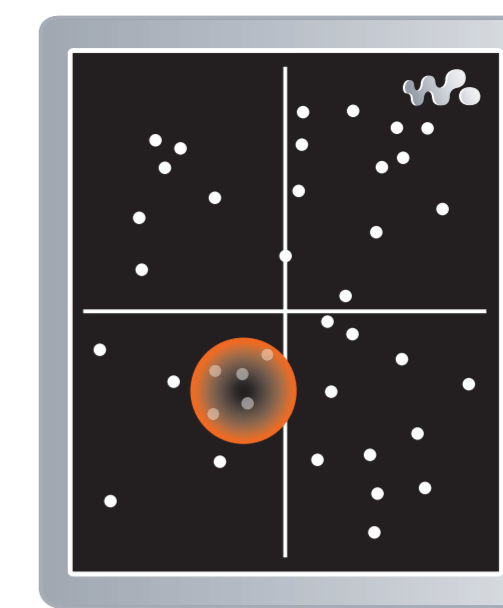
To create a playlist

- 1 From standby select **Menu > Media > Music > Playlists**.
- 2 Scroll to **New playlist** and select **Add**.
- 3 Enter a name and select **OK**.
- 4 For each track you want to add, scroll to the track and select **Mark**.
- 5 Select **Add** to add the tracks to the playlist.

To add tracks to a playlist

- 1 From standby select **Menu > Media > Music > Playlists**.
- 2 Select a playlist.
- 3 Scroll to **Add music** and select **Add**.
- 4 For each track you want to add, scroll to the track and select **Mark**.
- 5 Select **Add** to add the tracks to the playlist.

SensMe™



With SensMe™ you can create playlists by mood. By using *Sony Ericsson Media Manager* to analyze and transfer music to your phone, information such as mood, tempo and chords is added to your tracks. The tracks are displayed as dots on a map with two axes. You can create a playlist by selecting an area of tracks.

- ! For information on how to analyze your music, see *Sony Ericsson Media Manager Online Help*.

To create a playlist by mood

- 1 From standby select **Menu > Media > Music**.
- 2 Scroll to **SensMe™** and select **Open**.
- 3 Press or to preview different tracks.
- 4 Select **Add** and press or to choose an area of tracks.
- 5 Select **Create** to play the playlist in the Walkman™ player.
- 6 Select **Options > Save Playlist** and enter a name and select **OK**.

Using the USB cable

You can connect your phone to a computer with the USB cable to synchronize, transfer and back up phone content and use your phone as a modem. For more information, go to www.sonyericsson.com/support to read Getting started guides.



Transferring content using a computer

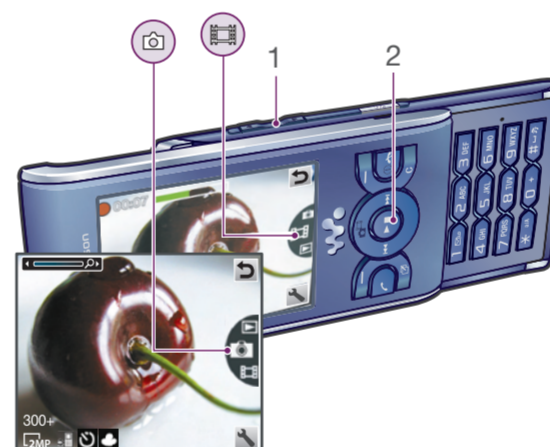
You can use *Sony Ericsson Media Manager* to transfer content between your phone and a computer. *Sony Ericsson Media Manager* software is included on the CD that comes with your phone and is available for download at www.sonyericsson.com/support.

To transfer content using Sony Ericsson Media Manager

- ! Do not remove the USB cable from your phone or computer during transfer, as this may corrupt the phone memory.

- 1 Connect the phone to a computer with a USB cable supported by your phone.
- 2 **Computer:** Start/Programs/Sony Ericsson/Media Manager.
- 3 **Phone:** Select **Media transfer**.
- 4 **Computer:** Wait until the phone appears in *Sony Ericsson Media Manager*.
- 5 Move files between your phone and the computer in *Sony Ericsson Media Manager*.
- 6 For safe disconnection of the USB cable, right-click the removable disk icon in *Windows Explorer* and select **Eject**.

Camera



- 1 Zoom in or out
- 2 Take pictures/Record video clips

- ! When taking a picture, zoom is available only in VGA mode.

To activate the camera

- From standby press .

To take a picture

- 1 Activate the camera and press the navigation key up or down to scroll to .
- 2 Press the selection key to take a picture.
- 3 The picture is automatically saved.

To record a video clip

- 1 Activate the camera and press the navigation key up or down to scroll to .
- 2 Press the selection key to start recording.
- 3 To stop recording, press the selection key. The video clip is automatically saved.

To view pictures

- 1 Activate the camera and select .
- 2 Scroll to the item.

Internet

Before you synchronize with an Internet service, use the Internet, PlayNow™ or other Internet-based services you need to have settings in your phone. If settings have not been entered, you can download settings using the setup wizard or by going to www.sonyericsson.com/support.

To start browsing

- 1 From standby select **Menu > Internet**.
- 2 Select **Options > Go to**.
- 3 Select an option.

To exit the browser

- When you browse the Internet, select **Options > Exit browser**.

Bookmarks

To create a bookmark

- 1 When you browse the Internet, select **Options > Tools > Add bookmark**.
- 2 Enter a title and an address. Select **Save**.

Ringtones

To set a ringtone

- 1 From standby select **Menu > Settings > the Sounds & alerts tab > Ringtone**.
- 2 Find and select a ringtone.

To set the ringtone volume

- 1 From standby select **Menu > Settings > the Sounds & alerts tab > Ring volume**.
- 2 Press or to change the volume.
- 3 Select **Save**.

To turn off the ringtone

- From standby press and hold down .

- ! All signals except the alarm signal are affected.

Sony Ericsson W595

UMTS HSDPA 2100 GSM EDGE 850/900/1800/1900
This Quick guide is published by Sony Ericsson Mobile Communications AB or its local affiliated company, without any warranty. Improvements and changes to this Quick guide necessitated by typographical errors, inaccuracies of current information, or improvements to programs and/or equipment, may be made by Sony Ericsson Mobile Communications AB at any time and without notice. Such changes will, however, be incorporated into new editions of this Quick guide.

© Sony Ericsson Mobile Communications AB, 2008
Please note:

Some of the services in this Quick guide are not supported by all networks. This also applies to the GSM International Emergency Number 112. Please contact your network operator or service provider if you are in doubt whether you can use a particular service or not.

Please read the *Important information* before you use your mobile phone. Your mobile phone has the capability to download, store and forward additional content, e.g. ringtones. The use of such content may be restricted or prohibited by rights of third parties, including but not limited to restriction under applicable copyright laws. You, and not Sony Ericsson, are entirely responsible for additional content that you download to or forward from your mobile phone. Prior to your use of any additional content, please verify that your intended use is properly licensed or is otherwise authorized. Sony Ericsson does not guarantee the accuracy, integrity or quality of any additional content or any other third party content. Bluetooth and the Bluetooth logo are trademarks or registered trademarks of Bluetooth SIG Inc. and any use of such marks by Sony Ericsson is under license.

The Liquid Identity logo, SensMe, PlayNow, MusicDJ, PhotoDJ, TrackID and VideoDJ are trademarks or registered trademarks of Sony Ericsson Mobile Communications AB. TrackID™ is powered by Gracenote Mobile MusicID™. Gracenote and Gracenote Mobile MusicID are trademarks or registered trademarks of Gracenote, Inc. WALKMAN, Sony, Memory Stick Micro™ and M2™ are trademarks or registered trademarks of Sony Corporation.

Ericsson is a trademark or registered trademark of Telefonaktiebolaget LM Ericsson. Some functionality described in this Quick guide are service dependent and are not available in all areas. Additional service fees may apply. Any rights not expressly granted herein are reserved. This Quick guide contains simulated screen images. Prior to use, please see important warranty information and terms for safe and efficient use separately provided.

Note: Sony Ericsson advises users to backup their personal data information. All illustrations are for illustration only and may not accurately depict the actual phone.

FCC Statement

This device complies with Part 15 of the FCC rules. Operation is subject to the following two conditions:

- (1) This device may not cause harmful interference, and
- (2) This device must accept any interference received, including interference that may cause undesired operation.

Any change or modification not expressly approved by Sony Ericsson may void the user's authority to operate the equipment. This equipment has been tested and found to comply with the limits for a Class B digital device, pursuant to Part 15 of the FCC Rules. These limits are designed to provide reasonable protection against harmful interference in a residential installation. This equipment generates, uses and can radiate radio frequency energy and, if not installed and used in accordance with the instructions, may cause harmful interference to radio communications. However, there is no guarantee that interference will not occur in a particular installation. If this equipment does cause harmful interference to radio or television reception, which can be determined by turning the equipment off and on, the user is encouraged to try to correct the interference by one or more of the following measures:

- Reorient or relocate the receiving antenna.
- Increase the separation between the equipment and receiver.
- Connect the equipment into an outlet on a circuit different from that to which the receiver is connected.
- Consult the dealer or an experienced radio/TV technician for help.

Industry Canada Statement

This device complies with RSS-210 of Industry Canada. Operation is subject to the following two conditions: (1) this device may not cause interference, and (2) this device must accept any

interference, including interference that may cause undesired operation of the device. This Class B digital apparatus complies with Canadian ICES-003. Cet appareil numérique de la classe B est conforme à la norme NMB-003 du Canada.

Declaration of Conformity for W595

We, Sony Ericsson Mobile Communications AB of Nya Vattentornet SE-221 88 Lund, Sweden declare under our sole responsibility that our product Sony Ericsson type AAD-3052111-BV and in combination with our accessories, to which this declaration relates is in conformity with the appropriate standards EN 301 511/V9.0.2, EN 301 489-7/V1.3.1, EN 301 908-1/V2.2.1, EN 301 908-2/V2.2.1, EN 301 489-24/V1.3.1, EN 300 328/V1.7.1, EN 301 489-17/V1.2.1, EN 60 950-1:2006 following the provisions of, Radio Equipment and Telecommunication Terminal Equipment directive 1999/5/EC.

Lund, June 2008

Shoji Nemoto,
Head of Product Business Group GSM/UMTS
We fulfil the requirements of the R&TTE Directive (99/5/EC).

CE 0682