

Thank you for purchasing a Sony Ericsson C510 Cyber-shot™. A stylish Cyber-shot™ phone with fantastic camera functions for amazing pictures.

For additional phone content, go to [www.sonyericsson.com/fun](http://www.sonyericsson.com/fun). Register now to get a suite of tools, free online storage, special offers, news and competitions at [www.sonyericsson.com/myphone](http://www.sonyericsson.com/myphone).

For product support, go to [www.sonyericsson.com/support](http://www.sonyericsson.com/support).

## Accessories – More for your phone

### Bluetooth™ Headset HBH-PV715

Practical and stylish headset for your everyday life



### M2 USB Adapter CCR-70

Transfer, store and share the content of your Memory Stick Micro™ (M2™)



### Digital Photo Frame IDP-100

Share your photos the wireless way



These accessories can be purchased separately but may not be available in every market. To view full feature descriptions and the range of accessories go to [www.sonyericsson.com/accessories](http://www.sonyericsson.com/accessories).

# Contents

## Getting started.....6

Assembly.....	6
Turning on the phone.....	7
Help.....	8
Charging the battery.....	8
Phone overview.....	10
Menu overview.....	12
Navigation.....	14
Memory.....	15
Phone language.....	16
Entering text.....	16

## Cyber-shot™ .....18

Using the camera.....	18
More camera features.....	19
Viewing and tagging photos.....	20
Working with photos.....	21
Blogging.....	22
Printing photos.....	23

## Transferring and handling content.....24

Handling content in the phone.....	24
Sending content to another phone.....	25

Transferring content to and from a computer.....	25
Using the USB cable.....	26
Phone name.....	27
Using Bluetooth™ wireless technology.....	27
Backing up and restoring.....	28

## Calling.....30

Making and receiving calls.....	30
Contacts.....	32
Speed dial.....	35
More calling features.....	36

## Messaging.....40

Text and picture messages.....	40
Voice messages.....	41
Email.....	42
Instant messaging .....	43

## Music .....45

Stereo portable handsfree.....	45
PlayNow™.....	46
TrackID™.....	47
Online music and video clips.....	47
Video player.....	47

Radio.....	48
MusicDJ™.....	48
Record sound.....	48

## **Internet.....49**

Bookmarks.....	49
History pages.....	50
More browser features.....	50
Internet security and certificates.....	51
Web feeds.....	51

## **Synchronising.....53**

Synchronising using a computer.....	53
Synchronising using an Internet service.....	53

## **More features.....54**

Flight mode.....	54
Update Service.....	54
Location services.....	55
Alarms.....	56
Calendar.....	57
Notes.....	57
Tasks.....	58
Profiles.....	58
Time and date.....	58
Theme.....	59
Main menu layout.....	59

Ringtones.....	59
Screen orientation.....	59
Games.....	60
Applications.....	60
Locks.....	61

## **Troubleshooting.....63**

Common questions.....	63
Error messages.....	66

## **Important information.....67**

## **Index.....79**

# Sony Ericsson C510a Cyber-shot™

UMTS/HSPA band 1/2/5 GSM/GPRS/EDGE  
850/900/1800/1900

This User guide is published by Sony Ericsson Mobile Communications AB or its local affiliated company, without any warranty. Improvements and changes to this User guide necessitated by typographical errors, inaccuracies of current information, or improvements to programs and/or equipment, may be made by Sony Ericsson Mobile Communications AB at any time and without notice. Such changes will, however, be incorporated into new editions of this User guide.

All rights reserved.

©Sony Ericsson Mobile Communications AB, 2008

Publication number: 1222-2071.1

Please note:

Some of the services in this User guide are not supported by all networks. *This also applies to the GSM International Emergency Number 112.*

Please contact your network operator or service provider if you are in doubt whether you can use a particular service or not.

Please read the *Important information* before you use your mobile phone.

Your mobile phone has the capability to download, store and forward additional content, e.g. ringtones.

The use of such content may be restricted or prohibited by rights of third parties, including but not limited to restriction under applicable copyright laws. You, and not Sony Ericsson, are entirely responsible for additional content that you download to or forward from your mobile phone.

Prior to your use of any additional content, please verify that your intended use is properly licensed or is otherwise authorized. Sony Ericsson does not guarantee the accuracy, integrity or quality of any additional content or any other third party content.

Under no circumstances will Sony Ericsson be liable in any way for your improper use of additional content or other third party content.

Smart-Fit Rendering is a trademark or a registered trademark of ACCESS Co., Ltd.

Bluetooth is a trademark or a registered trademark of Bluetooth SIG Inc. and any use of such mark by Sony Ericsson is under license.

The Liquid Identity logo, BestPic, PlayNow, MusicDJ, PhotoDJ, TrackID and VideoDJ are trademarks or registered trademarks of Sony Ericsson Mobile Communications AB. TrackID™ is powered by Gracenote Mobile MusicID™. Gracenote and Gracenote Mobile MusicID are trademarks or registered trademarks of Gracenote, Inc.

Cyber-shot is a trademark or registered trademark of Sony Corporation.

Sony, Memory Stick Micro™ and M2™ are trademarks or registered trademarks of Sony Corporation.

Google™ and Google Maps™ are trademarks or registered trademarks of Google, Inc.

SyncML is a trademark or registered trademark of Open Mobile Alliance LTD.

Ericsson is a trademark or registered trademark of Telefonaktiebolaget LM Ericsson.

Adobe Photoshop Album Starter Edition is a trademark or registered trademark of Adobe Systems Incorporated in the United States and/or other countries.

Microsoft, ActiveSync, Windows, Outlook, Windows Media and Vista are registered trademarks or trademarks of Microsoft Corporation in the United States and/or other countries.

T9™ Text Input is a trademark or a registered trademark of Tegic Communications. T9™ Text Input is licensed under one or more of the following: U.S. Pat. Nos. 5,818,437, 5,953,541, 5,187,480, 5,945,928, and 6,011,554; Canadian Pat. No.

1,331,057, United Kingdom Pat. No. 2238414B; Hong Kong Standard Pat. No. HK0940329; Republic of Singapore Pat. No. 51383; Euro.Pat. No. 0 842 463(96927260.8) DE/DK, FI, FR, IT, NL, PT, ES, SE, GB; and additional patents are pending worldwide.

This product is protected by certain intellectual property rights of Microsoft. Use or distribution of such technology outside of this product is prohibited without a license from Microsoft.

Content owners use Windows Media digital rights management technology (WMDRM) to protect their intellectual property, including copyrights. This device uses WMDRM software to access WMDRM-protected content. If the WMDRM software fails to protect the content, content owners may ask Microsoft to revoke the software's ability to use WMDRM to play or copy protected content.

Revocation does not affect unprotected content. When you download licenses for protected content, you agree that Microsoft may include a revocation list with the licenses. Content owners may require you to upgrade WMDRM to access their content. If you decline an upgrade, you will not be able to access content that requires the upgrade.

This product is licensed under the MPEG-4 visual and AVC patent portfolio licenses for the personal and non-commercial use of a consumer for (i) encoding video in compliance with the MPEG-4 visual standard ("MPEG-4 video") or the AVC standard ("AVC video") and/or (ii) decoding MPEG-4 or AVC video that was encoded by a consumer engaged in a personal and non-commercial activity and/or was obtained from a video provider licensed by MPEG LA to provide MPEG-4 and/or AVC video. No license is granted or shall be implied for any other use. Additional information including that relating to promotional, internal and commercial uses and licensing may be obtained from MPEG LA, L.L.C. See <http://www.mpegla.com>. MPEG Layer-3 audio decoding technology licensed from Fraunhofer IIS and Thomson.

Java, JavaScript and Java-based trademarks and logos are trademarks or registered trademarks of Sun Microsystems, Inc. in the U.S. and other countries.

End-user license agreement for Sun Java Platform, Micro Edition.

1. Restrictions: Software is confidential copyrighted information of Sun and title to all copies is retained by Sun and/or its licensors. Customer shall not modify, decompile, disassemble, decrypt, extract, or otherwise reverse engineer Software. Software may not be leased, assigned, or sublicensed, in whole or in part.

2. Export Regulations: Software including technical data, is subject to U.S. export control laws, including the U.S. Export Administration Act and its associated regulations, and may be subject to export or import regulations in other countries. Customer agrees to comply strictly with all such regulations and acknowledges that it has the responsibility to obtain licenses to export, re-export, or import Software. Software may not be downloaded, or otherwise exported or re-exported (i) into, or to a national or resident of, Cuba, Iraq, Iran, North Korea, Libya, Sudan, Syria (as such listing may be revised from time to time) or any country to which the U.S. has embargoed goods; or (ii) to anyone on the U.S. Treasury Department's list of Specially Designated Nations or the U.S. Commerce Department's Table of Denial Orders. 3. Restricted rights: Use, duplication or disclosure by the United States government is subject to the restrictions as set forth in the Rights in Technical Data and Computer Software Clauses in DFARS 252.227-7013(c) (1) and FAR 52.227-19(c) (2) as applicable.

Restricted Rights: Use, duplication or disclosure by the United States government is subject to the restrictions as set forth in the Rights in Technical Data and Computer Software Clauses in DFARS

252.227-7013(c) (1) (ii) and FAR 52.227-19(c) (2) as applicable.

Other product and company names mentioned herein may be the trademarks of their respective owners.

Any rights not expressly granted herein are reserved. All illustrations are for illustration only and may not accurately depict the actual phone.

## Instruction symbols

These symbols may appear in the User guide.



Note



Tip



Warning



A service or function is network- or subscription-dependent. Contact your network operator for details.

- > Use a selection or navigation key to scroll and select. See *Navigation* on page 14.

## Getting started

### Assembly

Before you start using your phone, you need to insert a SIM card and the battery.

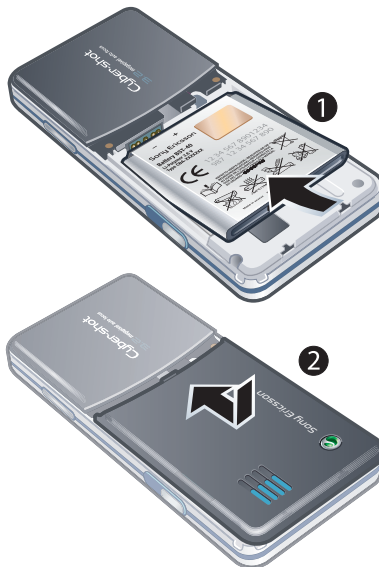
#### *To insert the SIM card*



1 Remove the battery cover.

2 Slide the SIM card into its holder with the gold-coloured contacts facing down.

#### *To insert the battery*



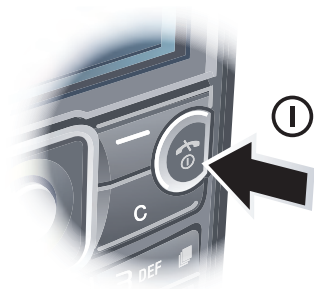
1 Insert the battery with the label side up and the connectors facing each other.




- 2 Slide the battery cover into place.

## Turning on the phone

### To turn on the phone




- 1 Press and hold down **(I)**.
- 2 Enter your SIM card PIN, if requested, and select **OK**.
- 3 Select a language.
- 4 Follow the instructions to use the setup wizard for basic settings and useful tips.

 If you want to correct a mistake when you enter your PIN, press **(C)**.

### SIM card


The SIM (Subscriber Identity Module) card, which you get from your network

operator, contains information about your subscription. Always turn off your phone and detach the charger before you insert or remove the SIM card.

 You can save contacts on the SIM card before you remove it from your phone. See *To copy names and numbers to the SIM card* on page 34.

### PIN

You may need a PIN (Personal Identification Number) to activate the services and functions in your phone. Your PIN is supplied by your network operator. Each PIN digit appears as \*, unless it starts with emergency number digits, for example, 112 or 911. You can see and call an emergency number without entering a PIN.

 If you enter the wrong PIN three times in a row, the SIM card is blocked. See *SIM card lock* on page 61.

### Standby

After you have turned on your phone and entered your PIN, the name of the network operator appears. This view is called standby. Your phone is now ready for use.

## Using other networks

Making and receiving calls, using messaging, and data transfer, for example, Internet-based services, outside your home network (roaming), may incur additional costs. Contact your operator for more information.

## Help

In addition to this User guide, Feature guides and more information are available at [www.sonyericsson.com/support](http://www.sonyericsson.com/support).

Help and information are also available in your phone.

### To view tips and tricks

- 1 From standby select **Menu** > **Settings** > the **General** tab > **Setup wizard**.
- 2 Select **Tips and tricks**.

### To view information about functions

- Scroll to a function and select **Info**, if available. In some cases, **Info** appears under **Options**.

### To view the phone demonstration

- From standby select **Menu** > **Entertainment** > **Demo tour**.

### To view the phone status

- From standby press the volume key. Phone, memory and battery information is shown.

## Charging the battery

The phone battery is partly charged when you buy it.

### To charge the battery



- 1 Connect the charger to the phone. It takes approximately 2.5 hours to fully charge the battery. Press a key to view the screen.
- 2 Remove the charger by tilting the plug upwards.



*You can use your phone while it is charging. You can charge the battery at any time and for more or less than 2.5 hours. You can interrupt the charging without damaging the battery.*

## Phone overview

- 1 Ear speaker
- 2 Video call camera
- 3 Connector for charger, handsfree and USB cable
- 4 Screen
- 5 Selection keys
- 6 Navigation key
- 7 Call key
- 8 Activity menu key
- 9 Memory card slot
- 10 Keylock key
- 11 End, on/off key
- 12 C key (Clear)
- 13 Silent key



- 10 Getting started

- 14 Flash
- 15 Camera lens
- 16 Volume, digital zoom keys
- 17 Camera cover
- 18 Camera key



## Menu overview



PlayNow™\*



Cyber-shot™



Alarms



Calls\*\*



All



Answered



Dialled



Missed



Internet



Messaging

Write new

Inbox/Conversations\*

Messages

Email

IM\*

Call voicemail



Contacts

Myself

New contact



Organiser

File manager \*\*

Applications

Video call

Calendar

Tasks

Notes

Synchronisation

Timer

Stopwatch

Calculator

Code memo



Entertainment

Online services\*

TrackID™

Location services

Games

VideoDJ™

PhotoDJ™

MusicDJ™

Remote control

Record sound

Demo tour



Media

Photo

Music

Video

Games

Web feeds

Settings



Radio



Settings\*\*



General

Profiles

Time & date

Language

Update service

Voice control

New events

Shortcuts

Flight mode

Security

Setup wizard

Accessibility\*

Phone status

Master reset



Sounds & alerts

Ring volume

Ringtone

Silent mode

Increasing ring

Vibrating alert

Message alert

Key sound



Display

Wallpaper

Main menu layout

Theme

Startup screen

Screen saver

Clock size  
Brightness  
Edit line names\*



Calls

Speed dial  
Smart search  
Divert calls  
Switch to line 2\*  
Manage calls

Time & cost\*  
Show/hide my no.

Handsfree



Connectivity

Bluetooth  
USB

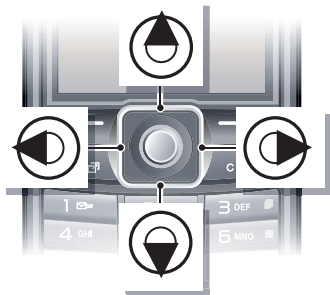
Phone name  
Synchronisation  
Device management  
Mobile networks  
Data communication\*  
Internet settings  
Streaming settings  
Message settings\*  
SIP settings  
Accessories

\* Some menus are operator-, network- and subscription-dependent.

\*\* You can use the navigation key to scroll between tabs in submenus. For more information, see *Navigation* on page 14.

## Navigation

To navigate the phone menus



- 1 From standby select **Menu**.
- 2 Use the navigation key to move through the menus.

To select actions on the screen

- Press the left, centre or right selection key.

To view options for an item

- Select **Options** to, for example, edit.

To end a function

- Press .

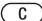
To return to standby

- Press .

To navigate your media

- 1 From standby select **Menu** > **Media**.
- 2 Scroll to a menu item and press the navigation key right.
- 3 To go back, press the navigation key left.

To delete items

- Press  to delete items such as numbers, letters, pictures and sounds.

Tabs

Tabs may be available. For example, **Settings** have tabs.







To scroll between tabs

- Press the navigation key left or right.

Shortcuts

You can use keypad shortcuts to go directly to functions.

To use navigation key shortcuts

- From standby press , ,  or  to go directly to a function.



### To edit a navigation key shortcut

- 1 From standby select **Menu** > **Settings** > the **General** tab > **Shortcuts**.
- 2 Scroll to an option and select **Edit**.
- 3 Scroll to a menu option and select **Shortc..**

### Main menu shortcuts

Menu numbering starts from the top left icon and moves across and then down row by row.

### To go directly to a main menu item

- From standby select **Menu** and press **1** – **9**, **\* (123)**, **0 +** or **# (123)**.

- ! *The **Main menu layout** must be set to **Grid**. See *To change the main menu layout* on page 59.*

### Activity menu

The activity menu gives you quick access to:

- **New events** – missed calls and new messages.
- **Running apps** – applications that are running in the background.
- **My shortcuts** – add your favourite functions to access them quickly.
- **Internet** – quick access to the Internet.

### To open the activity menu

- Press **☰**.

## Memory

You can save content on the memory card, in the phone memory and on the SIM card. Photos and music are saved on the memory card, if a memory card is inserted. If not, or if the memory card is full, photos and music are saved in the phone memory. Messages and contacts are saved in the phone memory, but you can choose to save them on the SIM card.

### Memory card

- ! *You may have to purchase a memory card separately.*

Your phone supports Memory Stick Micro™ (M2™) memory card adding more storage space to your phone. It can also be used as a portable memory card with other compatible devices.

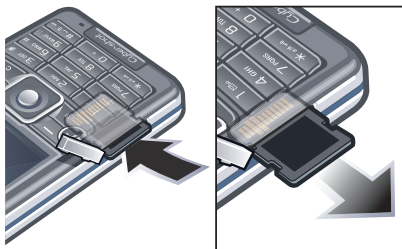
You can move content between the memory card and the phone memory. See *Handling content in the phone* on page 24.

### To insert a memory card



- Open the cover and insert the memory card with the gold-coloured contacts facing up.

### To remove a memory card



- Open the cover and press the edge of the memory card to release and remove it.

## Phone language

You can select a language to use in your phone.

### To change the phone language

- 1 From standby select **Menu > Settings > the General tab > Language > Phone language**.
- 2 Select an option.

## Entering text

You can use multitap text input or T9™ Text Input **T9** to enter text. The T9 Text Input method uses a built-in dictionary.

### To change text input method

- When you enter text, press and hold down **(\*) 0 6 9**.

### To shift between capitals and lower-case letters

- When you enter text, press **(\*) 0 6 9**.

### To enter numbers

- When you enter text, press and hold down **(0 +) - (9)**.

### *To enter full stops and commas*

- When you enter text, press **(1)**.

### *To enter a symbol*

- 1 When you enter text, select **Options > Add symbol**.
- 2 Scroll to a symbol and select **Insert**.

### *To enter text using T9™ Text Input*

- 1 From standby select, for example, **Menu > Messaging > Write new > Message**.
- 2 If **T9** is not displayed, press and hold down **(\*) (T9)** to change to T9 Text Input.
- 3 Press each key only once, even if the letter you want is not the first letter on the key. For example, to write the word “Jane”, press **(5)**, **(2)**, **(6)**, **(3)**. Write the whole word before looking at the suggestions.
- 4 Use **(4)** or **(5)** to view suggestions.
- 5 Press **(# → ?)** to accept a suggestion.

### *To enter text using multitap*

- 1 From standby select, for example, **Menu > Messaging > Write new > Message**.
- 2 If **T9** is displayed, press and hold down **(\*) (T9)** to change to multitap text input.
- 3 Press **(2)** – **(9)** repeatedly until the desired letter appears.
- 4 When a word is written, press **(# → ?)** to add a space.

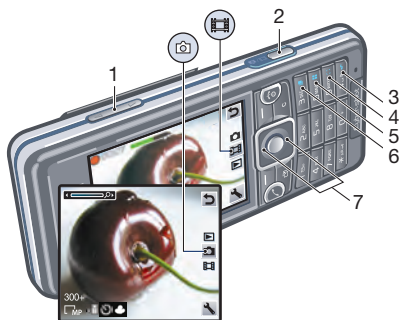
### *To add words to the built-in dictionary*

- 1 When you enter text using T9 Text Input, select **Options > Spell word**.
- 2 Write the word using multitap input and select **Insert**.

## Cyber-shot™

You can take photos and record video clips to view, save or send. You find saved photos and video clips in **Media** and in **File manager**.

### Using the camera



- 1 Zoom in or out
- 2 Take photos/Record video
- 3 Photo: **Flash** Video: **Light**
- 4 Photo: **Focus**
- 5 Photo: **Scenes** Video: **Night mode**




- 6 Photo: **Shoot mode** Video: **Video length**
- 7 Brightness

### To activate the camera



- Open the retractable lens cover.

### To take a photo

- 1 Activate the camera and press the navigation key to scroll to .
- 2 Press  halfway down to use auto focus.
- 3 When the dot and focus frame are green, press  fully down to take a