



# X8

## User guide – short version

### User guide in the phone

An extended User guide is available in your phone.

! The extended User guide is also available at [www.sonyericsson.com/support](http://www.sonyericsson.com/support).

To access the User guide in your phone

- 1 From the **Home screen**, drag upwards.
- 2 Find and tap **User guide**.

! If the supplied memory card is not inserted into your phone, you can access the User guide by selecting the **Online user guide** option after you tap **User guide** in step 2.

### User support application

The support application is your window to Sony Ericsson support. Watch how-to videos, get the latest support news, enter the support zone or get the latest software for your phone.

To open the user support application

- From the **Home screen**, flick through the horizontal list of widgets and tap **Support**.

### Experience more. Discover how.

Visit [www.sonyericsson.com/support](http://www.sonyericsson.com/support) to get the most from your phone.

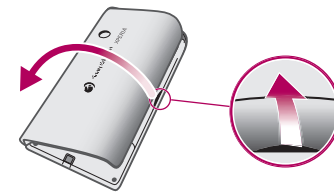
### Important information

Please read the **Important information** leaflet before you use your mobile phone.

! Some of the services and features described in this User guide are not supported in all countries/regions or by all networks and/or service providers in all areas. Without limitation, this applies to the GSM International Emergency Number 112. Please contact your network operator or service provider to determine availability of any specific service or feature and whether additional access or usage fees apply.

### Assembly

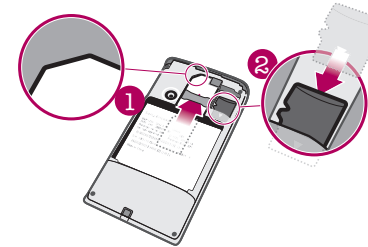
To remove the battery cover



- Insert the tip of your finger or a thin object into the opening on the side of the phone, between the phone and the battery cover, and slowly lift up the cover.

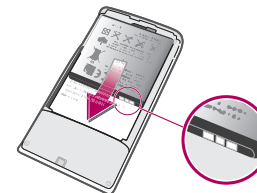
! Do not use sharp objects that may damage parts of the phone.

To insert the SIM card and the memory card



- Slide in the SIM card and the memory card with the gold-coloured contacts facing down.

To insert the battery



- Insert the battery with the battery usage labels facing down and the connectors facing each other.

To attach the battery cover



- 1 Secure the left side of the battery cover by aligning it into the openings on the rear left of the phone.
- 2 Press the right side of the battery cover down to lock the cover into place.

### Turning the phone on and off

To turn on the phone

- 1 Press and hold down the key on the top of the phone.
- 2 Press to unlock the screen.
- 3 Enter your SIM card PIN, when requested, and select **OK**.
- 4 At first startup, follow the instructions in Setup guide.

! Your PIN is supplied by your network operator. If you want to correct a mistake made while entering your SIM card PIN, press .

- 5 Tap **Set**.
- 6 Press to go back to the setup guide.

! While setting time, you can shift between 12-hour and 24-hour format. If you want to use **AM** and **PM**, you have to unmark **Use 24-hour format**.

To set up your phone to use Google™ services

- 1 From the setup guide, tap **Google account**.
- 2 Tap **Next**.
- 3 Tap **Sign in** if you want to use an existing Google™ account, or **Create** if you want to create a new account. Follow the on-screen instructions to finish setting up your phone with a Google™ account.

To set up an email account

- 1 From the setup guide, tap **Email**.
- 2 Tap **Email address**, enter your email address and tap **Next**.
- 3 Enter your password and tap **Done**.
- 4 Tap **Continue**.
- 5 If the phone cannot download your email account settings automatically, enter the account settings manually.

! If you need to enter the settings manually, contact your email service provider for the correct email account settings. For example, you need to know if the account type is POP3 or IMAP.

To set up Timescape™ to work with Facebook™

- 1 From the setup guide, tap **Facebook**.
- 2 Tap **Username**, enter your Facebook™ username and tap **Next**.
- 3 Enter your password and tap **Done**.

To set up Timescape™ to work with Twitter™

- 1 From the setup guide, tap **Twitter**.
- 2 Tap **Username**, enter your Twitter™ username and tap **Next**.
- 3 Enter your password and tap **Done**.

To transfer contacts using Sony Ericsson Sync

! Before you can transfer contacts to your new phone using this method, you need to set up a Sony Ericsson account and synchronise your old phone with this account. Go to [www.sonyericsson.com/user](http://www.sonyericsson.com/user) for more information.

- 1 From the setup guide, tap **Sync**.
- 2 Tap **Sony Ericsson Sync**.
- 3 Enter your username and password, then tap **Log in**.
- 4 Tap **Save**. The phone will now synchronise contacts, calendar events and bookmarks with your Sony Ericsson account.
- 5 Press to return to the setup guide.

To exit the setup guide

- When you are finished with the setup guide, tap **Done**.

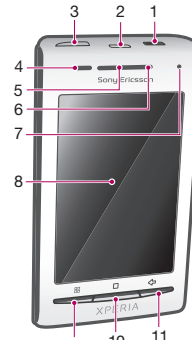
To access the setup guide

- 1 From the **Home screen**, drag upwards.
- 2 Find and tap **Settings** > **Basic settings** > **Setup guide**.

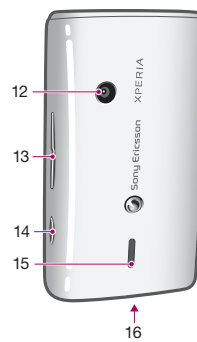
### Getting to know your phone

#### Phone overview

- 1 3.5 mm headset connector
- 2 Power key/Screen lock
- 3 Connector for charger/USB cable
- 4 Proximity sensor
- 5 Ear speaker
- 6 Notification LED
- 7 Light sensor
- 8 Touch screen
- 9 Menu key
- 10 Home key
- 11 Back key



- 12 Camera lens
- 13 Volume key
- 14 Camera key
- 15 Speaker
- 16 Strap holder



#### LED status

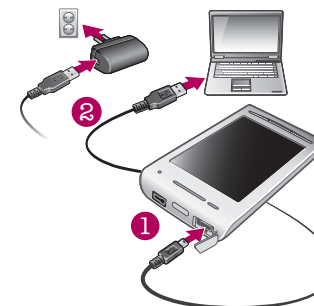
Green	The battery is fully charged
Flashing red	The battery level is low
Orange	The battery is charging. The battery level is between low and full
Flashing green	There is a pending message or you have missed a call

! While the phone is charging but the battery level is still low, pending notifications (flashing green) are not indicated by the LED.

### Charging the battery

The phone battery is partly charged when you buy the phone. It may take a few minutes before the battery icon appears on the screen when you connect the phone to a power source. You can still use your phone while it is charging.

! The battery will start to discharge a little after it is fully charged and then charges again after a certain time. This is to extend battery life and may result in the charge status showing a level below 100 percent.



To charge the phone using the power adapter

- Connect the phone to a power outlet using the USB cable and the power adapter.

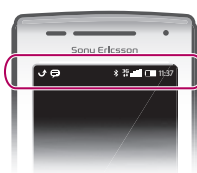
- 3 Select an option.

To add widgets to the Home screen

- 1 Press .
- 2 Tap **Arrange widgets** > **Add widget**.
- 3 Select a widget from the list.
- 4 Press to exit the edit mode.

#### Status bar

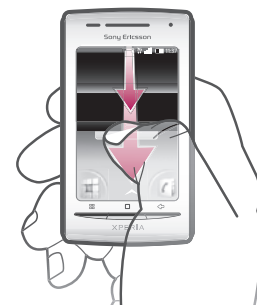
A status bar at the top of the screen displays phone status information and notifications. Notification icons appear on the left side of the status bar. Phone status icons appear on the right side. From the status bar you can access the notification panel.



#### Notification panel

In the Notification panel, notification icons are displayed in a detailed view. You can open notifications, such as messages, reminders, or event notifications directly from the Notification panel. You can also open running applications such as the music player or the radio.

To open the Notification panel



- Drag the status bar downwards.

To close the Notification panel

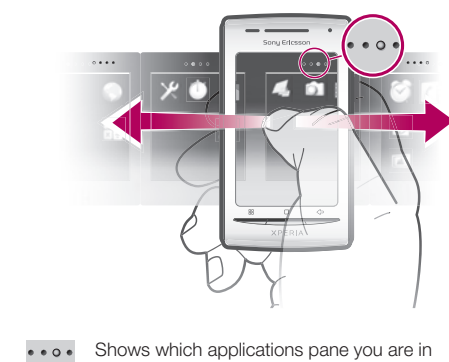
- Press .
- Drag the Notification panel upwards.

To open a running application from the Notification panel

- From the Notification panel, tap the icon for the running application to open it.

#### Applications panes

You can access your applications in the phone using the applications panes. The applications panes extend beyond the screen. You can create new panes and arrange the applications according to your preferences.



To open the applications panes

! You can open the applications panes by different ways.

- From the **Home screen**, drag upwards.
- From the **Home screen**, tap .
- Flick the **Home screen** upwards.
- From the **Home screen**, press .

To browse the applications panes

- From the applications panes, flick right or left.

To create a new applications pane

- 1 From the **Home screen**, press .
- 2 Tap **Arrange icons**.

- 3 Touch and hold an item in the last pane until it vibrates and then drag it to the right.
- 4 Press to exit the edit mode.

To move an application

- 1 From the **Home screen**, press .
- 2 Tap **Arrange icons**.
- 3 Touch and hold an item until it vibrates and drag it to one of the corners or to another application pane. If you move an item in the last applications pane, the pane switches to the next pane.
- 4 Press to exit the edit mode.

! The items in the applications panes are not shortcuts to the applications but the actual applications. When you move an application from the applications panes to corners or vice versa, the actual application gets moved and not shortcut. There are no shortcuts to the applications.

#### Using the touch screen

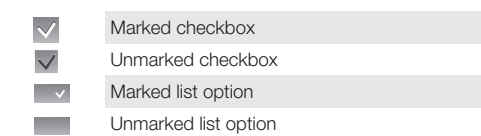
! This phone is equipped with a conductive display. Moisture on the screen may prevent proper functionality.

To open or highlight an item

- Tap the item.

To mark or unmark options

- Tap the relevant checkbox or in some cases the right side of the list option, to mark or unmark an option.



To pan

- When this option is available, drag the screen to pan.

To zoom

- When available, tap or to zoom in or out.
- Touch, hold and drag upwards or downwards to zoom in or out.

! You may have to drag your finger on the screen (in any direction) to make the zoom icons appear.

#### Scrolling

You can scroll up or down, and on some webpages you can also scroll to the sides.

! Dragging or flicking will not activate anything on the screen.

#### Using the keyboard

When you start an application or select a field that requires text or numbers, the keyboard appears.

To display the keyboard to enter text

- Tap a text entry field.

To hide the keyboard

- When you enter text, tap .

To turn off the phone

- 1 Press and hold until the options menu opens.
- 2 In the options menu, tap **Power off**.
- 3 Tap **OK**.

To activate the screen

- Press .

### Starting your phone for the first time

The first time you start your phone, a setup guide helps you enter essential phone settings and set up your email and online services accounts. This is also a good time to use Sony Ericsson Sync to synchronise your old contacts with your new phone or to import contacts from a SIM card. You can also access the setup guide later from the **Settings** menu.

To set the language

- 1 Scroll through the available languages list.
- 2 Tap the language you want to use in your phone. The language is marked.
- 3 Tap **Save**.

! If you choose the wrong language and cannot read the menu texts, go to [www.sonyericsson.com/support](http://www.sonyericsson.com/support) for help.

#### Internet and messaging settings

To send text and multimedia messages and to access the Internet, you must have a 2G/3G mobile data connection

and the correct settings. There are different ways to get these settings:

- For most mobile phone networks and operators, Internet and messaging settings come preinstalled on your phone. You can then start using the Internet and send messages right away.
- In some cases you will get the option to download Internet and messaging settings the first time you turn on your phone. It is also possible to download these settings later from the **Settings** menu.
- You can manually add and change Internet and network settings in your phone at any time. Contact your network operator for detailed information on your Internet and messaging settings.

To import contacts from the SIM card

! When you copy contacts from a phone to a SIM card, the amount and the type of information you can transfer for each contact is limited. To get more help on how to copy contacts between two phones, go to [www.sonyericsson.com/support](http://www.sonyericsson.com/support) from your computer.

- 1 When you start your phone for the first time, the setup wizard prompts you to import your SIM contacts. Tap **Import contacts**.

- 2 When you are asked to confirm if you want to import your contacts from the SIM card to the phone, tap **Yes**.

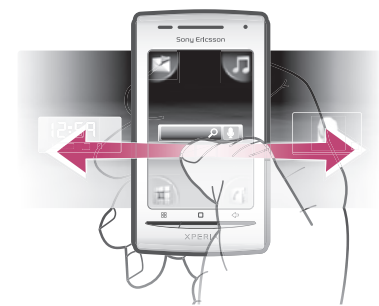
To set the time and date

- 1 From the setup guide, tap **Time & date**.
- 2 Unmark the **Automatic** checkbox, if it is marked.
- 3 Tap **Set date** or **Set time**.
- 4 Tap or to adjust the date or hour and minute.

### Home screen

The **Home screen** is the starting point of your phone. You can personalise the **Home screen** by adding widgets, or by changing the wallpaper and the applications in the corners.

! A widget is a part of an application on the Home screen. It displays important information from a particular application. For example, the Sony Ericsson Timescape™ widget displays incoming messages and the Media widget allows you to start playing music directly.



To view the extended Home screen

- Drag your finger to the sides of the screen.

To change the Home screen wallpaper

- 1 Press .
- 2 Tap **Change wallpaper**.



2 Enter the emergency number and tap . To delete a number, tap .

To make a call

- 1 From the **Home screen**, tap .
- 2 If the call log is shown, tap to enter the dial pad view.
- 3 Enter the number of the recipient and tap . To delete a number, tap .

To end a call

- Tap .

To answer a call



- Drag the indicator to .

## Contacts

To view your contacts

- From the **Home screen**, tap to open the **Contacts** application.

- If you have not set up your phone for synchronisation with a web service, or imported SIM contacts, you can choose to do so the first time you open **Contacts**.

To import contacts from the SIM card

- 1 From the **Home screen**, tap .
- 2 Press , then tap **Import/export** > **Import from SIM card**.

3 Tap **OK**.

- If you have already imported the contacts from the SIM card you are using, there is no need to do it again.

To export contacts to the SIM card

- 1 From the **Home screen**, tap .
- 2 Press , then tap **Import/export** > **Export to SIM card**.
- 3 Tap **OK**.

- When you copy contacts to your SIM card, the amount and the type of information you can transfer for each contact is limited. This is due to limited memory on SIM cards.

## Multimedia and text messaging

To create and send a message

- 1 From the **Home screen**, tap .
- 2 Tap **New message**.
- 3 Tap **Write message**, enter your message text and tap **Next**.
- 4 To add a recipient, select a contact from the list. You can also tap the text field, enter a number manually and then tap **Done**.
- 5 If you want to add a photo or a video, tap and select an option.
- 6 If you want to add, remove or edit recipients, press , then tap **Edit recipients** and edit the recipients.

7 When you are finished, tap **Send**.

- If you exit a message before sending, it will be saved as a **Draft**. The message thread will be tagged with the word **Draft**.

To read a received message

- 1 From the **Home screen**, tap .
- 2 Tap a message thread.
- 3 If the message is not downloaded yet, tap the message and then tap **Download message**.
- 4 If the received message contains music or a video, tap the item and then tap **View video** or **Play audio**.

- When you receive a text or multimedia message, appears in the status bar. To read the message, you can also drag the status bar downwards and tap the received message when the status bar is open.

## Email

You can use your phone to send and receive emails through your regular email account.

- You can set up synchronisation with a Microsoft® Exchange Server by using the **Dataviz® RoadSync™** application in your phone. You can then use the **RoadSync Mail** application in your phone with your Microsoft® Exchange Server email account. Go to [www.dataviz.com](http://www.dataviz.com) for more information.

To set up an email account in your phone

- 1 From the **Home screen**, drag upwards.
- 2 Find and tap **Email**.

3 Tap **Email address**, enter your email address and tap **Next**.

- 4 Enter your password and tap **Done**.
- 5 Tap **Continue**.
- 6 If the phone cannot download your email account settings automatically, you can proceed by entering the account settings manually.

- If you need to enter the settings manually, contact your email service provider for the correct email account settings. For example, you need to know if the account type is POP3 or IMAP.

To create and send an email message

- 1 From the **Home screen**, drag upwards.
- 2 Find and tap **Email**.
- 3 Tap **Write new**.
- 4 Tap **To:** and enter the recipient's address, then tap **Done**. You can add more recipients the same way, or delete a recipient by tapping .
- 5 Tap **Subject**, enter the subject and tap **Done**.
- 6 Tap **Write email**, enter the message text and tap **Done**.
- 7 To attach a file, tap and select the type of file to attach.
- 8 Tap **Send**.

To receive and open email messages

- 1 From the **Home screen**, drag upwards.
- 2 Find and tap **Email**.
- 3 Tap **Inbox**.
- 4 To update the inbox with new messages, tap .
- 5 To open and read a message, tap the message.

## Connecting your phone to a computer

Connect your phone to a computer and start transferring pictures, music and other file types. All you have to do is connect a USB cable between the phone and computer to launch an installation of PC Companion on the computer. The PC Companion application can help you access additional applications to transfer and organise media files, update your phone and more.

- You might not be able to transfer some copyright-protected material between your phone and computer.

To drag and drop content between your phone and a computer

- 1 Connect your phone to a computer using a USB cable.
- 2 **Phone:** Tap **Connect your phone**. The memory card is mounted to the computer.
- 3 **Computer:** Wait until the phone memory and the memory card appear as external disks in the file explorer.
- 4 **Computer:** Drag and drop selected files between the phone and the computer.

To disconnect the USB cable safely

- Do not disconnect the USB cable when transferring content as this may corrupt the content.

- 1 **Computer:** Make sure to enable the hardware to be safely removed.
- 2 **Phone:** Drag the status bar downwards.
- 3 Tap **Turn off USB storage**.

- 4 Tap **Turn Off**.
- 5 Disconnect the USB cable.

- Computer instructions may vary depending on your operating system. See the documentation of your computer's operating system for more information.

To install PC Companion

- 1 Connect your phone to a computer using a USB cable.
- 2 Tap **Install PC Companion**.
- 3 **Computer:** PC Companion automatically starts on your computer after a few seconds. Follow the on-screen instructions to install PC Companion.

To use PC Companion

- 1 Connect your phone to a computer using a USB cable.
- 2 **Phone:** Tap **Connect your phone**.
- 3 **Computer:** PC Companion automatically starts on your computer after a few seconds.

- If PC Companion does not start automatically, you can start it from the start menu of your computer.

## Updating your phone

To download software updates wirelessly

- 1 From the **Home screen**, drag upwards.
- 2 Find and tap **Settings** > **About phone** > **Software update**. Follow the on screen instructions to update your phone.

To download software updates using a USB cable

- Do not disconnect the USB cable when updating your phone as this may corrupt the content. Make sure that

## Sony Ericsson Timescape™

Sony Ericsson Timescape™ revolutionises your social experience by collecting all your communications into one view. Every event – Facebook or Twitter updates, text and multimedia messages, missed calls – appears as a tile in a chronological flow on the screen. You can see a snack-size preview of an event before choosing to view the full content. You can filter by event type to view all communications for a contact.

- The services and features described in this chapter may not be supported in all countries/ regions or by all networks and/or service providers in all areas.

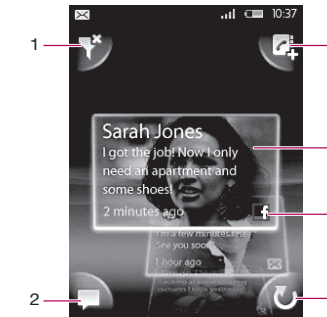
To start Timescape™

- 1 From the **Home screen**, drag upwards.
- 2 Find and tap **Timescape**.
- 3 The first time you start Timescape, you can tap **Log in** and log in to your **Facebook** or **Twitter** account to receive **Facebook** and **Twitter** updates in Timescape. If you do not want to log in, tap **Continue**.

- If you are already logged in to Facebook, Twitter, or another online service while setting up the phone for the first time, when you start Timescape™, the welcome screen will not be displayed and you are not required to log in again.

- If you are not logged in and you tap **Continue**, then you can always log in from the Home screen by tapping **Settings** > **Sony Ericsson** > **Timescape™ settings**.

## The Timescape™ start screen



- 1 Tile filter icon
- 2 Status update icon
- 3 Go to contact icon
- 4 Refresh icon (only visible if you are logged in to a web service account)
- 5 Timescape™ tiles, in chronological order
- 6 Tile content icon

- To update your Facebook or Twitter status in Timescape™
- 1 From the **Home screen**, drag upwards.
  - 2 Find and tap **Timescape**.

## Before you download applications and content

Before you download, make sure that you have an Internet connection. Also, you may need to have a memory card inserted in your phone to download content, such as music, ringtones and themes.

To open Android™ Market

- 1 From the **Home screen**, drag upwards.
- 2 Find and tap **Market**.

## Synchronising

Synchronising content between your phone and a computer is an easy and practical way to share the same contacts, messages, or calendar events on both devices. You can synchronise in several different ways:

- Sony Ericsson Sync - Synchronise with a Sony Ericsson account to transfer contacts between different phones, and make backups of your phone contacts.
- Google Sync™ - Synchronise your phone with your Gmail™, Google Calendar™ and Google™ contacts.
- RoadSync™ - Synchronise and get your company email, contacts and calendar in your phone. Your company or organisation must be running Microsoft® Exchange Server 2003 or later.

To create a new Sony Ericsson account in your phone

- 1 From the **Home screen**, drag upwards.
- 2 Find and tap **Sync**.
- 3 Tap **Sony Ericsson Sync**.

- 4 Tap **Sign up**. Follow the registration wizard to create a Sony Ericsson account.
- 5 If desired, change the default synchronisation settings. Tap **Save**.

To synchronise using Sony Ericsson Sync

- 1 From the **Home screen**, drag upwards.
- 2 Find and tap **Sync**.
- 3 Tap the sync icon for any listed synchronisation item to start the synchronisation.

To set up automatic synchronisations in Google sync

- 1 From the **Home screen**, drag upwards.
- 2 Find and tap **Settings** > **Data synchronization**.
- 3 Mark the **Background data** checkbox.
- 4 Mark the **Auto-sync** checkbox.
- 5 Mark the checkboxes for the synchronisation items you want to synchronise automatically.

To set up RoadSync™ synchronisations

- Contact your Microsoft® Exchange Server administrator for the correct account settings.

- 1 From the **Home screen**, drag upwards.
- 2 Find and tap **RoadSync Mail**.
- 3 Follow the on-screen instructions to set up a Microsoft® Exchange Server synchronisation with the **RoadSync Mail**, **RoadSync Calendar** and **Contacts** applications.
- 4 Once you have entered your account settings, you can change the account preferences. When finished, press , then tap **Done**.

## No battery charging icon appears when I start charging the phone

It may take a few minutes before the battery icon appears on the screen.

## I cannot transfer content between my phone and the computer, when using a USB cable

The software or the USB drivers have not been properly installed. Go to [www.sonyericsson.com/support](http://www.sonyericsson.com/support) for more detailed installation instructions and troubleshooting sections.

## Error messages

### No network coverage

- Your phone is in flight mode. Make sure flight mode is off.
- Your phone is not receiving any network signal, or the received signal is too weak. Contact your network operator and make sure that the network has coverage where you are.
- The SIM card is not working properly. Insert your SIM card in another phone. If this works, it is probably your phone that is causing the problem. In this case, contact the nearest Sony Ericsson service center.

### Emergency calls only

You are within range of a network, but you are not allowed to use it. However, in an emergency, some network operators allow you to call the international emergency number 112.

## SIM card is locked.

You have entered your PIN incorrectly 3 times in a row. To unlock the phone, you need the PUK provided by your operator.

## SIM card is PUK-locked.

You have entered your PUK (Personal Unblocking Key) incorrectly 10 times in a row. Please contact your service provider.

## Legal information

### Sony Ericsson E15i/E15a

This User guide is published by Sony Ericsson Mobile Communications AB or its local affiliated company, without any warranty. Improvements and changes to this User guide necessitated by typographical errors, inaccuracies of current information, or improvements to programs and/or equipment, may be made by Sony Ericsson Mobile Communications AB at any time and without notice. Such changes will, however, be incorporated into new editions of this User guide. All rights reserved.

©Sony Ericsson Mobile Communications AB, 2010

Publication number: 1237-9492.2

Your mobile phone has the capability to download, store and forward additional content, e.g. ringtones. The use of such content may be restricted or prohibited by rights of third parties, including but not limited to restriction under applicable copyright laws. You, and not Sony Ericsson, are entirely responsible for additional content that you download to or forward from your mobile phone. Prior to your use of any additional content, please verify that your intended use is properly licensed or is otherwise authorized. Sony Ericsson does not guarantee the accuracy, integrity or quality of any additional content or any other third party content. Under no circumstances will Sony Ericsson be liable in any way for your improper use of additional content or other third party content.

This User guide may reference services or applications provided by third parties. Use of such programming or services may require separate

registration with the third party provider and may be subject to additional terms of use. For applications accessed on or through a third-party website, please review such websites' terms of use and applicable privacy policy in advance. Sony Ericsson does not warrant or guarantee the availability or performance of any third-party websites or offered services.

Bluetooth is a trademark or a registered trademark of Bluetooth SIG Inc. and any use of such mark by Sony Ericsson is under license. The Liquid Identity logos, Xperia, Timescape and X8 are trademarks or registered trademarks of Sony Ericsson Mobile Communications AB. Sony and "make.believe" are trademarks or registered trademarks of Sony Corporation.

Google, Google Maps, Gmail, Google Sync, Google Calendar and Android are trademarks or registered trademarks of Google, Inc. Ericsson is a trademark or registered trademark of Telefonaktiebolaget LM Ericsson. Dataviz and RoadSync are trademarks or registered trademarks of Dataviz, Inc. Facebook is a trademark or a registered trademark of Facebook, Inc. Twitter is a trademark or a registered trademark of Twitter, Inc. Wi-Fi is a trademark or a registered trademark of the Wi-Fi Alliance.

Microsoft, Windows, Windows Vista, Windows Server and Explorer are registered trademarks or trademarks of Microsoft Corporation in the United States and/or other countries. This product is protected by certain intellectual property rights of Microsoft. Use or distribution of such technology outside of this product is prohibited without a license from Microsoft.

Other product and company names mentioned herein may be the trademarks of their respective owners. Any rights not expressly granted herein are reserved. All other trademarks are property of their respective owners.

All illustrations are for illustration only and may not accurately depict the actual phone.

To view your IMEI number



- You can find the IMEI number under the battery.

## Troubleshooting

### Battery performance

- The standby time is defined as the time when the phone is connected to one network operator and located in a place where it has full network coverage and a strong signal strength. The standby time may vary depending on your position in the network and the signal strength. The more time your phone is in standby, the more the battery lasts.

The following tips will help you improve battery performance:

- Charge your phone often.

- 3 Tap .
- 4 Tap **Select services**.

- 5 Use the toggles to select the services for which you want to update your status. If you want to update your status for a service you are not logged in to, tap the service and log in to it. When you have selected the desired services, tap **Done**.

- 6 Tap **Edit status**, enter your new status, and tap **Send**.

To view an event in Timescape™

- 1 From the **Home screen**, drag upwards.
- 2 Find and tap **Timescape**.
- 3 Scroll to the tile for the desired event, then tap the tile.

## Android™ Market

You can personalise and find new ways to use your phone by downloading additional applications and content. When you open Android™ Market you enter a world of applications and games. You can browse the applications and games through categories and top downloads. To use Android™ Market, you need to have a Google™ account.

- Android™ Market may not be available in all countries or regions

- When you download content to your phone, you might be charged for the amount of data transferred to your phone. Contact your operator for information about data transfer rates in your country.

[www.sonyericsson.com](http://www.sonyericsson.com)



Sony Ericsson

Sony Ericsson Mobile Communications AB  
SE-221 88 Lund, Sweden



1237-9492.2

**Sony Ericsson**

FCC Statement  
Declaration of Conformity

**Sony Ericsson E15a**

UMTS HSPA band 1 2 5 GSM GPRS/EDGE 850/900/1800/1900

## Important Information

### United States & Canada

THIS PHONE MODEL HAS BEEN CERTIFIED IN COMPLIANCE WITH THE GOVERNMENT'S REQUIREMENTS FOR EXPOSURE TO RADIO WAVES.

The E15a Series mobile phones have been designed to comply with applicable safety requirements for exposure to radio waves. Your wireless phone is a radio transmitter and receiver. It is designed to not exceed the limits\* of exposure to radio frequency (RF) energy set by governmental authorities. These limits establish permitted levels of RF energy for the general population. The guidelines are based on standards that were developed by international scientific organizations through periodic and thorough evaluation of scientific studies. The standards include a safety margin designed to assure the safety of all individuals, regardless of age and health.

The radio wave exposure guidelines employ a unit of measurement known as the Specific Absorption Rate (SAR). Tests for SAR are conducted using standardized methods with the phone transmitting at its highest certified power level in all used frequency bands. While there may be differences between the SAR levels of various phone models, they are all designed to meet the relevant guidelines for exposure to radio waves. For more information on SAR, please refer to the safe and efficient use chapter in the User Guide.

The highest SAR value as reported to the authorities for this phone model when tested for use by the ear is 1.44 W/kg\*, and when worn on the body is 0.76 W/kg\* for speech and 0.83 W/kg\* for data calls. Body worn measurements are made while the phone is in use and worn on the body with a Sony Ericsson accessory supplied with or designated for use with this phone. It is therefore recommended that only Ericsson and Sony Ericsson original accessories be used in conjunction with Sony Ericsson phones.

\*\*Before a phone model is available for sale to the public in the US, it must be tested and certified by the Federal Communications Commission (FCC) that it does not exceed the limit established by

the government-adopted requirement for safe exposure\*. The tests are performed in positions and locations (i.e., by the ear and worn on the body) as required by the FCC for each model. The FCC has granted an Equipment Authorization for this phone model with all reported SAR levels evaluated as in compliance with the FCC RF exposure guidelines. While there may be differences between the SAR levels of various phones, all mobile phones granted an FCC equipment authorization meet the government requirement for safe exposure. SAR information on this phone model is on file at the FCC and can be found under the Display Grant section of <http://www.fcc.gov/oet/fccid> after searching on FCC ID PY7A3880092. Additional information on SAR can be found on the Cellular Telecommunications & Internet Association (CTIA) website at <http://www.phonefacts.net>.

*\* In the United States and Canada, the SAR limit for mobile phones used by the public is 1.6 watts/kilogram (W/kg) averaged over one gram of tissue. The standard incorporates a margin of safety to give additional protection for the public and to account for any variations in measurements.*

*\*\*This paragraph is only applicable to authorities and customers in the United States.*

## Important Information

### Latin & South America

#### Radio wave exposure and Specific Absorption Rate (SAR) information

The E15a Series mobile phones have been designed to comply with applicable safety requirements for exposure to radio waves. These requirements are based on scientific guidelines that include safety margins designed to assure the safety of all persons, regardless of age and health.

The radio wave exposure guidelines employ a unit of measurement known as the Specific Absorption Rate, or SAR. Tests for SAR are conducted using standardised methods with the phone transmitting at its highest certified power level in all used frequency bands.

While there may be differences between the SAR levels of various phone models, they are all designed to meet the relevant guidelines for exposure to radio waves.

For more information on SAR, please refer to the safety chapter in the User Guide.

SAR data information for residents in countries that have adopted the SAR limit recommended by the International Commission on Non-Ionizing Radiation Protection (ICNIRP), which is 2 W/kg averaged over ten (10) gram of tissue (for example European Union, Japan, Brazil and New Zealand):

The highest SAR value for this model phone when tested by Sony Ericsson for use at the ear is 0.85 W/kg (10g).

## FCC Statement

This device complies with Part 15 of the FCC rules.

Operation is subject to the following two conditions: (1)

This device may not cause harmful interference, and (2)

This device must accept any interference received, including interference that may cause undesired operation.



Any change or modification not expressly approved by Sony Ericsson may void the user's authority to operate the equipment.

This equipment has been tested and found to comply with the limits for a Class B digital device, pursuant to Part 15 of the FCC Rules. These limits are designed to provide reasonable protection against harmful interference in a residential installation. This equipment generates, uses and can radiate radio frequency energy and, if not installed and used in accordance with the instructions, may cause harmful interference to radio communications. However, there is no guarantee that interference will not occur in a particular installation.

If this equipment does cause harmful interference to radio or television reception, which can be determined by turning the equipment off and on, the user is encouraged to try to correct the interference by one or more of the following measures:

- Reorient or relocate the receiving antenna.
- Increase the separation between the equipment and receiver.
- Connect the equipment into an outlet on a circuit different from that to which the receiver is connected.
- Consult the dealer or an experienced radio/TV technician for help.

## Industry Canada Statement

This device complies with RSS-210 of Industry Canada.

Operation is subject to the following two conditions: (1) this device may not cause interference, and (2) this device must accept any interference, including interference that may cause undesired operation of the device.

This Class B digital apparatus complies with Canadian ICES-003.

Cet appareil numérique de la classe B est conforme à la norme NMB-003 du Canada.



## Declaration of Conformity for E15a

We, **Sony Ericsson Mobile Communications AB** of  
Nya Vattentorget  
SE-221 88 Lund, Sweden

declare under our sole responsibility that our product

**Sony Ericsson type AAD-3880092-BV**

and in combination with our accessories, to which this declaration relates is in conformity with the appropriate standards EN 301 511:V9.0.2, EN 301 908-1:V3.2.1, EN 301 908-2:V3.2.1, EN 300 440-2:V1.3.1, EN 300 328:V1.7.1, EN 301 489-7:V1.3.1, EN 301 489-17:V2.1.1, EN 301 489-24:V1.4.1, EN 301 489-3:V1.4.1 and EN 60 950-1:2006 following the provisions of, Radio Equipment and Telecommunication Terminal Equipment directive **1999/5/EC**.

Lund, July 2010

**CE 0682** 



Dan Redin,  
*Corporate Vice President, Head of Development*

We fulfil the requirements of the R&TTE Directive (1999/5/EC).

Ce produit est conforme aux directives de R&TTE (**1999/5/EC**).

Cumplimos con los requisitos de la Directiva R&TTE – Normas sobre equipos de terminales de radio y telecomunicaciones (**1999/5/EC**).

Atendemos aos requisitos da Diretriz R&TTE (**1999/5/EC**).

[www.sonyericsson.com](http://www.sonyericsson.com)



**Sony Ericsson**

Sony Ericsson Mobile Communications AB  
SE-221 88 Lund, Sweden

1238-3661.1

**Sony Ericsson Consumer Web site**

At [www.sonyericsson.com/support](http://www.sonyericsson.com/support) there is a support section where help and tips are only a few clicks away. Here you will find the latest computer software updates and tips on how to use your product more efficiently.

**Service and support**

You have access to a portfolio of exclusive service advantages such as:

- Global and local Web sites providing support.
- A global network of Contact Centers.
- An extensive network of Sony Ericsson service partners.
- A warranty period. Learn more about the warranty conditions in the *Limited warranty* section.

At [www.sonyericsson.com/support](http://www.sonyericsson.com/support), you can find the latest support tools and information. For operator-specific services and features, please contact your network operator.

You can also contact our Contact Centers. If your country/region is not represented in the list below, please contact your local dealer. (Calls are charged according to national rates, including local taxes, unless the phone number is a toll-free number.)

If your product needs service, please contact the dealer from whom it was purchased, or one of our service partners. For warranty claims, save proof of purchase.

**Guidelines for Safe and Efficient Use**

Please follow these guidelines. Failure to do so might entail a potential health risk or product malfunction. If in doubt as to its proper function, have the product checked by a certified service partner before charging or using it.

**Recommendations for care and safe use of our products**

- Handle with care and keep in a clean and dust-free place.
- **Warning!** May explode if disposed of in fire.
- Do not expose to liquid or moisture or excess humidity.

2

phone. The SAR value is determined at the highest certified power level in laboratory conditions, but because the phone is designed to use the minimum power necessary to access the chosen network, the actual SAR level can be well below this value. There is no proof of difference in safety based on difference in SAR value.

Products with radio transmitters sold in the US must be certified by the Federal Communications Commission (FCC). When required, tests are performed when the phone is placed at the ear and when worn on the body. For body-worn operation, the phone has been tested when positioned a minimum of 15 mm from the body without any metal parts in the vicinity of the phone or when properly used with an appropriate Sony Ericsson accessory and worn on the body.

For more information about SAR and radio frequency exposure, go to: [www.sonyericsson.com/health](http://www.sonyericsson.com/health).

**Flight mode**

Bluetooth and WLAN functionality, if available in the device, can be enabled in Flight mode but may be prohibited onboard aircraft or in other areas where radio transmissions are prohibited. In such environments, please seek proper authorisation before enabling Bluetooth or WLAN functionality even in Flight mode.

**Malware**

Malware (short for malicious software) is software that can harm the mobile phone or other computers. Malware or harmful applications can include viruses, worms, spyware, and other unwanted programs. While the device does employ security measures to resist such efforts, Sony Ericsson does not warrant or represent that the device will be impervious to the introduction of malware. You can however reduce the risk of malware attacks by using care when downloading content or accepting applications, refraining from opening or responding to messages from unknown sources, using trustworthy services to access the Internet, and only downloading content to the mobile phone from known, reliable sources.

6

- For optimum performance, the product should not be operated in temperatures below -10°C(+14°F) or above +45°C(+113°F). Do not expose the battery to temperatures above +60°C(+140°F).



- Do not expose to flames or lit tobacco products.
- Do not drop, throw or try to bend the product.
- Do not paint or attempt to disassemble or modify the product. Only Sony Ericsson authorised personnel should perform service.



- Consult with authorised medical staff and the instructions of the medical device manufacturer before using the product near pacemakers or other medical devices or equipment.
- Discontinue use of electronic devices, or disable the radio transmitting functionality of the device, where required or requested to do so.
- Do not use where a potentially explosive atmosphere exists.
- Do not place the product, or install wireless equipment, in the area above an air bag in a car.
- **Caution:** Cracked or broken displays may create sharp edges or splinters that could be harmful upon contact.
- Do not use the Bluetooth Headset in positions where it is uncomfortable or will be subject to pressure.

**Children**

**Warning!** Keep out of the reach of children. Do not allow children to play with mobile phones or accessories. They could hurt themselves or others. Products may contain small parts that could become detached and create a choking hazard.



**Power supply (Charger)**

Connect the charger to power sources as marked on the product. Do not use outdoors or in damp areas. Do not alter or subject the cord to damage or stress. Unplug the unit before cleaning it. Never alter the plug. If it does not fit into the outlet, have a proper outlet installed by an electrician. When a power supply is connected there is a small drain of power. To avoid this small energy waste, disconnect the power supply when the product is fully charged.

3

**Accessories**

Use only Sony Ericsson branded original accessories and certified service partners. Sony Ericsson does not test third-party accessories. Accessories may influence RF exposure, radio performance, loudness, electric safety and other areas. Third-party accessories and parts may pose a risk to your health or safety or decrease performance.

**Accessible Solutions/Special Needs**

In the US, compatible Sony Ericsson phones may offer compatibility with TTY terminals (with use of necessary accessory). For more information call the Sony Ericsson Special Needs Center on 877 878 1996 (TTY) or 877 207 2056 (voice), or go to [www.sonyericsson-snc.com](http://www.sonyericsson-snc.com).

**Disposal of old electrical and electronic equipment**

Electronic equipment and batteries should not be included as household waste but should be left at an appropriate collection point for recycling. This helps prevent potential negative consequences for the environment and human health. Check local regulations by contacting your local city office, your household waste disposal service, the shop where you purchased the product or calling a Sony Ericsson Contact Center. Do not attempt to remove internal batteries. Internal batteries shall be removed only by a waste treatment facility or trained service professional.



**Disposing of the battery**

Check local regulations or call a Sony Ericsson Contact Center for information. Never use municipal waste.



**Memory card**

If the product comes complete with a removable memory card, it is generally compatible with the handset purchased but may not be compatible with other devices or the capabilities of their memory cards. Check other devices for compatibility before purchase or use. If the product is equipped with a memory card reader, check memory card compatibility before purchase or use.

7

Use of charging devices that are not Sony Ericsson branded may pose increased safety risks.

**Battery**

New or idle batteries can have short-term reduced capacity. Fully charge the battery before initial use. Use for the intended purpose only. Charge the battery in temperatures between +5°C(+41°F) and +45°C(+113°F). Do not put the battery into your mouth. Do not let the battery contacts touch another metal object. Turn off the product before removing the battery. Performance depends on temperatures, signal strength, usage patterns, features selected and voice or data transmissions. Only Sony Ericsson service partners should remove or replace built-in batteries. Use of batteries that are not Sony Ericsson branded may pose increased safety risks. Replace the battery only with another Sony Ericsson battery that has been qualified with the product per the standard IEEE-1725. Use of an unqualified battery may present a risk of fire, explosion, leakage or other hazard.

**Personal medical devices**

Mobile phones may affect implanted medical equipment. Reduce risk of interference by keeping a minimum distance of 15 cm(6 inches) between the phone and the device. Use the phone at your right ear. Do not carry the phone in your breast pocket. Turn off the phone if you suspect interference. For all medical devices, consult a physician and the manufacturer.

**Driving**

Some vehicle manufacturers forbid the use of phones in their vehicles unless a handsfree kit with an external antenna supports the installation. Check with the vehicle manufacturer's representative to be sure that the mobile phone or Bluetooth handsfree will not affect the electronic systems in the vehicle. Full attention should be given to driving at all times and local laws and regulations restricting the use of wireless devices while driving must be observed.

4

Memory cards are generally formatted prior to shipping. To reformat the memory card, use a compatible device. Do not use the standard operating system format when formatting the memory card on a PC. For details, refer to the operating instructions of the device or contact customer support.

**Warning!**

If the device requires an adapter for insertion into the handset or another device, do not insert the card directly without the required adapter.

**Precautions on memory card use**

- Do not expose the memory card to moisture.
- Do not touch terminal connections with your hand or any metal object.
- Do not strike, bend, or drop the memory card.
- Do not attempt to disassemble or modify the memory card.
- Do not use or store the memory card in humid or corrosive locations or in excessive heat such as a closed car in summer, in direct sunlight or near a heater, etc.
- Do not press or bend the end of the memory card adapter with excessive force.
- Do not let dirt, dust, or foreign objects get into the insert port of any memory card adapter.
- Check you have inserted the memory card correctly.
- Insert the memory card as far as it will go into any memory card adapter needed. The memory card may not operate properly unless fully inserted.
- We recommend that you make a backup copy of important data. We are not responsible for any loss or damage to content you store on the memory card.
- Recorded data may be damaged or lost when you remove the memory card or memory card adapter, turn off the power while formatting, reading or writing data, or use the memory card in locations subject to static electricity or high electrical field emissions.

8

**GPS/Location based functions**

Some products provide GPS/Location based functions. Location determining functionality is provided "As is" and "With all faults". Sony Ericsson does not make any representation or warranty as to the accuracy of such location information.

Use of location-based information by the device may not be uninterrupted or error free and may additionally be dependent on network service availability. Please note that functionality may be reduced or prevented in certain environments such as building interiors or areas adjacent to buildings.

Caution: Do not use GPS functionality in a manner which causes distraction from driving.

**Emergency calls**

Calls cannot be guaranteed under all conditions. Never rely solely upon mobile phones for essential communication. Calls may not be possible in all areas, on all networks, or when certain network services and/or phone features are used.

**Antenna**

Use of antenna devices not marketed by Sony Ericsson could damage the phone, reduce performance, and produce SAR levels above the established limits. Do not cover the antenna with your hand as this affects call quality, power levels and can shorten talk and standby times.

**Radio Frequency (RF) exposure and Specific Absorption Rate (SAR)**

When the phone or Bluetooth handsfree is turned on, it emits low levels of radio frequency energy. International safety guidelines have been developed through periodic and thorough evaluation of scientific studies. These guidelines establish permitted levels of radio wave exposure. The guidelines include a safety margin designed to assure the safety of all persons and to account for any variations in measurements.

Specific Absorption Rate (SAR) is used to measure radio frequency energy absorbed by the body when using a mobile

5

**Protection of personal information**

Erase personal data before disposing of the product. To delete data, perform a master reset. Deleting data from the phone memory does not ensure that it cannot be recovered. Sony Ericsson does not warrant against recovery of information and does not assume responsibility for disclosure of any information even after a master reset.

**Loudness warning!**

Avoid volume levels that may be harmful to your hearing.

**End User Licence Agreement**

Software delivered with this device and its media is owned by Sony Ericsson Mobile Communications AB, and/or its affiliated companies and its suppliers and licensors.

Sony Ericsson grants you a non-exclusive limited licence to use the Software solely in conjunction with the Device on which it is installed or delivered. Ownership of the Software is not sold, transferred or otherwise conveyed.

Do not use any means to discover the source code or any component of the Software, reproduce and distribute the Software, or modify the Software. You are entitled to transfer rights and obligations to the Software to a third party, solely together with the Device with which you received the Software, provided the third party agrees in writing to be bound by the terms of this Licence.

This licence exists throughout the useful life of this Device. It can be terminated by transferring your rights to the Device to a third party in writing.

Failure to comply with any of these terms and conditions will terminate the licence immediately.

Sony Ericsson and its third party suppliers and licensors retain all rights, title and interest in and to the Software. To the extent that the Software contains material or code of a third party, such third parties shall be beneficiaries of these terms.

9

Important information

[www.sonyericsson.com](http://www.sonyericsson.com)



Sony Ericsson Mobile Communications AB  
SE-221 88 Lund, Sweden



1222-9266.3

This licence is governed by the laws of Sweden. When applicable, the foregoing applies to statutory consumer rights. In the event Software accompanying or provided in conjunction with your device is provided with additional terms and conditions, such provisions shall also govern your possession and usage of the Software.

### Export regulations

Export regulations: Goods delivered under this Agreement may be the subject to import and export regulations of the European Union, the United States and other countries. Purchaser will comply with these applicable laws and regulations and will obtain and maintain any export and import license required for the delivery of goods to Purchaser under this Agreement. Without limiting the foregoing, and as an example, Purchaser will not knowingly export or re-export goods to destinations identified pursuant to Articles in Chapter II of European Council Regulation (EC) 428/2009 and specifically, and without limitation, Purchaser will also comply with U.S. government Export Administration Regulations ("EAR", 15 C.F.R. §§ 730-774, <http://www.bis.doc.gov/>) administered by Department of Commerce, Bureau of Industry and Security and economic sanctions regulations (30 C.F.R. §§ 500 et. seq., <http://www.treas.gov/offices/enforcement/ofac/>) administered by the U.S. Department of Treasury, Office of Foreign Assets Control.

### Limited Warranty

Sony Ericsson Mobile Communications AB, SE-221 88 Lund, Sweden, (Sony Ericsson) or its local affiliated company, provides this Limited Warranty for your mobile phone, original accessory delivered with your mobile phone, and/or your mobile computing product (hereinafter referred to as "Product").

Should your Product need warranty service, please return it to the dealer from whom it was purchased, or contact your local

Sony Ericsson Contact Center (national rates may apply) or visit [www.sonyericsson.com](http://www.sonyericsson.com) to get further information.

### Our warranty

Subject to the conditions of this Limited Warranty, Sony Ericsson warrants this Product to be free from defects in design, material and workmanship at the time of its original purchase by a consumer. This Limited Warranty will last for a period of one (1) year as from the original date of purchase of the Product.

### What we will do

If, during the warranty period, this Product fails to operate under normal use and service, due to defects in design, materials or workmanship, Sony Ericsson authorised distributors or service partners, in the country/region\* where you purchased the Product, will, at their option, either repair or replace the Product in accordance with the terms and conditions stipulated herein.

Sony Ericsson and its service partners reserve the right to charge a handling fee if a returned Product is found not to be under warranty according to the conditions below.

Please note that some of your personal settings, downloads and other information may be lost when your Sony Ericsson Product is repaired or replaced. At present, Sony Ericsson may be prevented by applicable law, other regulation or technical restrictions from making a backup copy of certain downloads. Sony Ericsson does not take any responsibility for any lost information of any kind and will not reimburse you for any such loss. You should always make backup copies of all the information stored on your Sony Ericsson Product such as downloads, calendar and contacts before handing in your Sony Ericsson Product for repair or replacement.

### Conditions

1. This Limited Warranty is valid only if the original proof of purchase for this Product issued by a Sony Ericsson authorised dealer specifying the date of purchase and serial number\*, is presented with the Product to be repaired or replaced. Sony Ericsson reserves the right to refuse warranty service if this

information has been removed or changed after the original purchase of the Product from the dealer.

2. If Sony Ericsson repairs or replaces the Product, the repair for the defect concerned, or the replaced Product shall be warranted for the remaining time of the original warranty period or for ninety (90) days from the date of repair, whichever is longer. Repair or replacement may involve the use of functionally equivalent reconditioned units. Replaced parts or components will become the property of Sony Ericsson.

3. This warranty does not cover any failure of the Product due to normal wear and tear, or due to misuse, including but not limited to use in other than the normal and customary manner, in accordance with the Sony Ericsson instructions for use and maintenance of the Product. Nor does this warranty cover any failure of the Product due to accident, software or hardware modification or adjustment, acts of God or damage resulting from liquid.

A rechargeable battery can be charged and discharged more than a hundred times. However, it will eventually wear out – this is not a defect and corresponds to normal wear and tear. When the talk-time or standby time is noticeably shorter, it is time to replace the battery. Sony Ericsson recommends that you use only batteries and chargers approved by Sony Ericsson. Minor variations in display brightness and colour may occur between phones. There may be tiny bright or dark dots on the display. These are called defective pixels and occur when individual dots have malfunctioned and can not be adjusted. Two defective pixels are deemed acceptable.

Minor variations in camera image appearance may occur between phones. This is nothing uncommon and is not regarded as a defective camera module.

4. Since the cellular system on which the Product is to operate is provided by a carrier independent from Sony Ericsson, Sony Ericsson will not be responsible for the operation, availability, coverage, services or range of that system.

5. This warranty does not cover Product failures caused by installations, modifications, or repair or opening of the Product performed by a non-Sony Ericsson authorised person.

6. The warranty does not cover Product failures which have been caused by use of accessories or other peripheral devices which are not Sony Ericsson branded original accessories intended for use with the Product.

7. Tampering with any of the seals on the Product will void the warranty.

8. THERE ARE NO EXPRESS WARRANTIES, WHETHER WRITTEN OR ORAL, OTHER THAN THIS PRINTED LIMITED WARRANTY. ALL IMPLIED WARRANTIES, INCLUDING WITHOUT LIMITATION THE IMPLIED WARRANTIES OF MERCHANTABILITY OR FITNESS FOR A PARTICULAR PURPOSE, ARE LIMITED TO THE DURATION OF THIS LIMITED WARRANTY. IN NO EVENT SHALL SONY ERICSSON OR ITS LICENSORS BE LIABLE FOR INCIDENTAL OR CONSEQUENTIAL DAMAGES OF ANY NATURE WHATSOEVER, INCLUDING BUT NOT LIMITED TO LOST PROFITS OR COMMERCIAL LOSS TO THE FULL EXTENT THOSE DAMAGES CAN BE DISCLAIMED BY LAW.

Some countries/states do not allow the exclusion or limitation of incidental or consequential damages, or limitation of the duration of implied warranties, so the preceding limitations or exclusions may not apply to you.

The warranty provided does not affect the consumer's statutory rights under applicable legislation in force, nor the consumer's rights against the dealer arising from their sales / purchase contract.

### \*Geographical scope of the warranty

If you have purchased your Product in a country member of the European Economic Area (EEA) or in Switzerland or the Republic of Turkey, and such Product was intended for sale in the EEA or in Switzerland or in Turkey, you can have your Product serviced in any EEA country or in Switzerland or in Turkey, under the warranty conditions prevailing in the country in which you require servicing, provided that an identical Product is sold in such country by an

authorised Sony Ericsson distributor. To find out if your Product is sold in the country you are in, please call the local Sony Ericsson Contact Center. Please observe that certain services may not be available outside the country of original purchase, for example, due to the fact that your Product may have an interior or exterior which is different from equivalent models sold in other countries. Please note in addition that it may sometimes not be possible to repair SIM-locked Products.

\*\* In some countries/regions additional information (such as a valid warranty card) may be requested.

### Trademarks and acknowledgements

The Liquid Identity logo and Xperia are trademarks or registered trademarks of Sony Ericsson Mobile Communications AB.

Sony is a trademark or a registered trademark of Sony Corporation.

Ericsson is a trademark or registered trademark of Telefonaktiebolaget LM Ericsson.

Bluetooth is a trademark or a registered trademark of Bluetooth SIG Inc. and any use of such mark by Sony Ericsson is under license.

Other product and company names mentioned herein may be the trademarks of their respective owners.

Any rights not expressly granted herein are reserved.

10

11

12

13

14

### Support

Anguilla	1-800-080-9518 (Toll Free)	questions.CO@support.sonyericsson.com
Antigua and Barbuda	1-800-081-9518 (Toll Free)	questions.CO@support.sonyericsson.com
Argentina	0800-333-7427 (número gratuito)	questions.CO@support.sonyericsson.com
Australia	1300 850-050 (Toll Free)	questions.AU@support.sonyericsson.com
The Bahamas	1-800-205-6062 (Toll Free)	questions.CO@support.sonyericsson.com
Barbados	1-800-082-9518 (Toll Free)	questions.CO@support.sonyericsson.com
Belgique/België	02-0745 1611	questions.BE@support.sonyericsson.com
Belize	AN 815, PIN 5597 (Toll Free)	questions.CO@support.sonyericsson.com
Bermuda	1-800-083-9518 (Toll Free)	questions.CO@support.sonyericsson.com
Bolivia	800-100-542 (número gratuito)	questions.CO@support.sonyericsson.com
Brasil	4001-0444 (ligação gratuita)	questions.BR@support.sonyericsson.com
Canada	1 866 766 9374 (Toll Free / sans frais)	questions.CA@support.sonyericsson.com
Cayman Islands	1-800-084-9518 (Toll Free)	questions.CO@support.sonyericsson.com
Central and Southern Africa	+27 11 506 0123	questions.CF@support.sonyericsson.com
Česká republika	844 550 055	questions.CZ@support.sonyericsson.com
Chile	800-646-425 (número gratuito)	questions.CO@support.sonyericsson.com
Colombia	01800-0966-080 (número gratuito)	questions.CO@support.sonyericsson.com

15

Costa Rica	0 800 011 0400 (número gratuito)	questions.CO@support.sonyericsson.com
Danmark	3331 2828	questions.DK@support.sonyericsson.com
Deutschland	0180 534 2020 (ortsübliche Gebühren)	questions.DE@support.sonyericsson.com
Dominica	1-800-085-9518 (Toll Free)	questions.CO@support.sonyericsson.com
Ecuador	1-800-0102-50 (número gratuito)	questions.CO@support.sonyericsson.com
Eesti	06 032 032	questions.EE@support.sonyericsson.com
Egypt/مصر	16727	questions.EG@support.sonyericsson.com
Ελλάδα	8011 11 810 810 (+30 210 899 19 19 (από κινητό τηλέφωνο))	questions.GR@support.sonyericsson.com
El Salvador	800-6323 (número gratuito)	questions.CO@support.sonyericsson.com
España	902 180 576 (tarifa local)	questions.ES@support.sonyericsson.com
France	09 69 32 21 21 (Xperia™ uniquement)	questions.FR@support.sonyericsson.com
Guatemala	1-800-300-0057 (número gratuito)	questions.CO@support.sonyericsson.com
Haiti/Ayiti	AN 193, PIN 5598 (número gratuit / nimewo gratis)	questions.CO@support.sonyericsson.com
Honduras	AN 8000122, PIN 5599 (número gratuito)	questions.CO@support.sonyericsson.com
Hong Kong/香港	+852 8203 8863	questions.HK@support.sonyericsson.com
Hrvatska	062 000 000	questions.HR@support.sonyericsson.com
India/भारत	1800 11 1800 (Toll Free)	questions.IN@support.sonyericsson.com

16

	+91 (011) 39011111	
Indonesia	021 2701388	questions.ID@support.sonyericsson.com
Ireland	1850 545 888 (Local rate)	questions.IE@support.sonyericsson.com
Italia	06 48895206 (tariffa locale)	questions.IT@support.sonyericsson.com
Jamaica	1-800-442-3471 (Toll Free)	questions.CO@support.sonyericsson.com
Κύπρος/Κίβρις	0800 90 909	questions.CY@support.sonyericsson.com
Latvija	67 21 43 01	questions.LV@support.sonyericsson.com
Lietuva	8 700 55030	questions.LT@support.sonyericsson.com
Magyarország	01 880 47 47	questions.HU@support.sonyericsson.com
Malaysia	1800-88-9900 (Toll Free / bebas tol)	questions.MY@support.sonyericsson.com
Maroc/المغرب	+212 2 2958 344	questions.MA@support.sonyericsson.com
México	0 1800 000 4722 (número gratuito)	questions.MX@support.sonyericsson.com
Nederland	0900 8998318	questions.NL@support.sonyericsson.com
Nederlandse Antillen	001-866-509-8660 (gratis nummer)	questions.CO@support.sonyericsson.com
New Zealand	0800-100-150 (Toll Free)	questions.NZ@support.sonyericsson.com
Nicaragua	AN 1800-0166, PIN 5600 (número gratuito)	questions.CO@support.sonyericsson.com
Norge	815 00 840 (lokaltakt)	questions.NO@support.sonyericsson.com
Österreich	0810 200 245	questions.AT@support.sonyericsson.com
Pakistan/پاکستان	021 - 111 22 55 73	questions.PK@support.sonyericsson.com
Panamá	00800-787-0009 (número gratuito)	questions.CO@support.sonyericsson.com
Paraguay	009 800 54 20032 (número gratuito)	questions.CO@support.sonyericsson.com

17

Perú	0800-532-38 (número gratuito)	questions.CO@support.sonyericsson.com
Philippines/Pilipinas	+63 2 7891860	questions.PH@support.sonyericsson.com
Polska	+48 22 22 77 444	questions.PL@support.sonyericsson.com
Portugal	808 204 466 (chamada local)	questions.PT@support.sonyericsson.com
República Dominicana	1-800-751-3370 (número gratuito)	questions.CO@support.sonyericsson.com
România	+40 21 401 0401	questions.RO@support.sonyericsson.com
Saint Kitts and Nevis	1-800-087-9518 (Toll Free)	questions.CO@support.sonyericsson.com
Saint Vincent and the Grenadines	1-800-088-9518 (Toll Free)	questions.CO@support.sonyericsson.com
Schweiz/Suisse/Svizzera	0848 824 040	questions.CH@support.sonyericsson.com
Singapore	+65 6744 0733	questions.SG@support.sonyericsson.com
Slovenia	01 600 5000	questions.SI@support.sonyericsson.com
Slovensko	02 5443 6443	questions.SK@support.sonyericsson.com
South Africa	0861 632222	questions.ZA@support.sonyericsson.com
South Korea/대한민국	(+82) 1588 4170	questions.KO@support.sonyericsson.com
Suomi	09 299 2000	questions.FI@support.sonyericsson.com
Sverige	013 24 45 00 (lokal taxa)	questions.SE@support.sonyericsson.com
Trinidad and Tobago	1-800-080-9521 (Toll Free)	questions.CO@support.sonyericsson.com
Türkiye	+90 212 473 77 77	questions.TR@support.sonyericsson.com
United Kingdom	08705 237 237 (Local rate)	questions.GB@support.sonyericsson.com
United States	1 866 766 9374	questions.US@support.sonyericsson.com
Uruguay	000-401-787-013 (número gratuito)	questions.CO@support.sonyericsson.com
Venezuela	0-800-1-00-2250 (número gratuito)	questions.CO@support.sonyericsson.com

18

Việt Nam	1900 1525 (miễn phí)	questions.VN@support.sonyericsson.com
Беларусь	8 82 00 361 0001	questions.BY@support.sonyericsson.com
България	0800 1 8778	questions.BG@support.sonyericsson.com
Россия	+7 (495) 7870986	questions.RU@support.sonyericsson.com
Україна	(+380) 44 590 1515	questions.UA@support.sonyericsson.com
الأردن	+971 4 3919 880	questions.JO@support.sonyericsson.com
الإمارات العربية المتحدة (UAE)	+971 4 3919 880	questions.AE@support.sonyericsson.com
الكويت	+971 4 3919 880	questions.KW@support.sonyericsson.com
المملكة العربية السعودية	800-8200-727	questions.SA@support.sonyericsson.com
中国	+86 400 810 0000	questions.CN@support.sonyericsson.com
台灣	+886 2 25625511	questions.TW@support.sonyericsson.com
ไทย	02 2483 030	questions.TH@support.sonyericsson.com

19