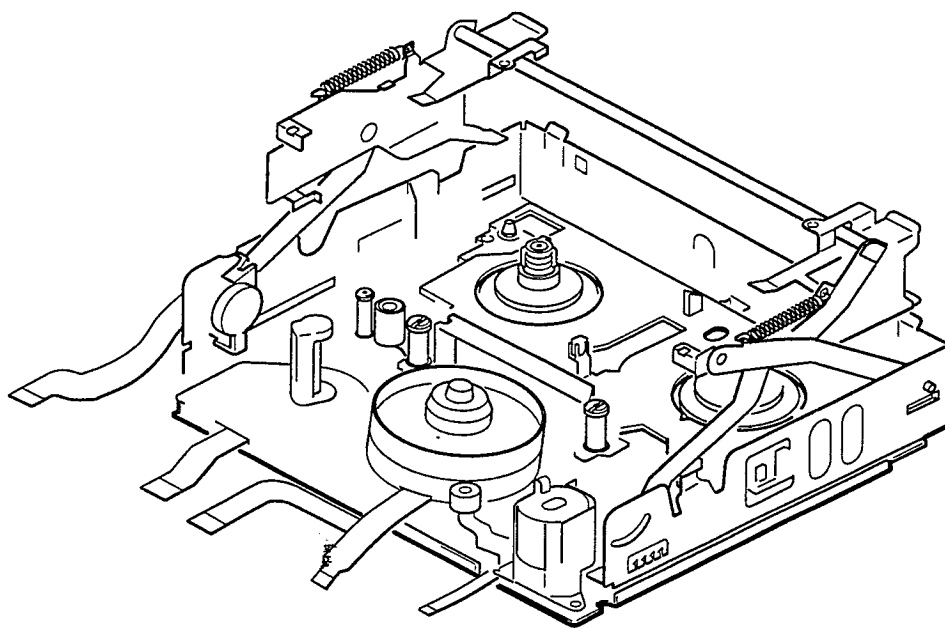


NEW TECHNICAL THEORY FOR SERVICING

Video8

B MECHANISM OPERATION MANUAL



8 MECHANISM DECK
SONY®

A18

CONTENTS

1. Main parts layout diagram	4
2. Operation of main parts	5
3. Operation of each part	6
3-1. Driving of LS chassis	6
3-2. Driving of pinch roller	8
3-3. Driving of tension regulator and TG1	10
3-4. Driving of S reel and S ratchet	12
3-5. Driving of T ratchet and T soft gear	14
4. Operation in each mode	17
4-1. Cassette IN \Longrightarrow STOP	17
4-2. STOP \Longrightarrow PB	23
4-3. STOP \Longrightarrow REC	27
4-4. STOP \Longrightarrow FF	31
4-5. STOP \Longrightarrow REWIND	35
4-6. PB \Longrightarrow CUE	38
4-7. PB \Longrightarrow REVIEW	40
4-8. PB \Longrightarrow PAUSE	42
4-9. STOP \Longrightarrow EJECT	45

1. Main parts layout diagram

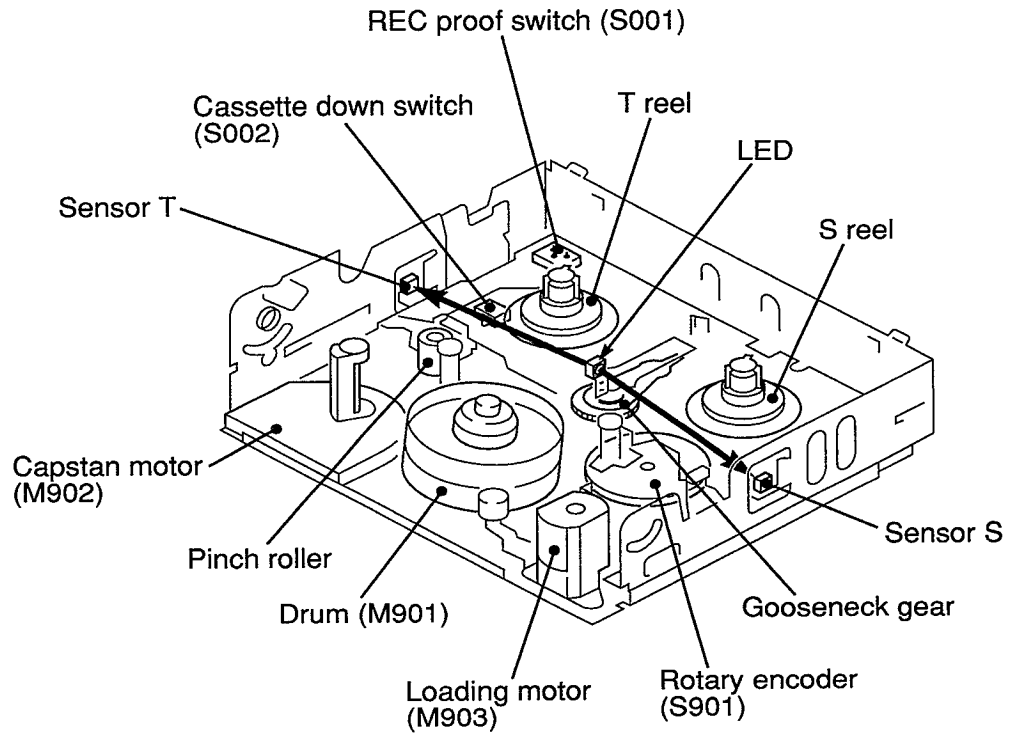


Fig. 1-1

2. Operation of main parts

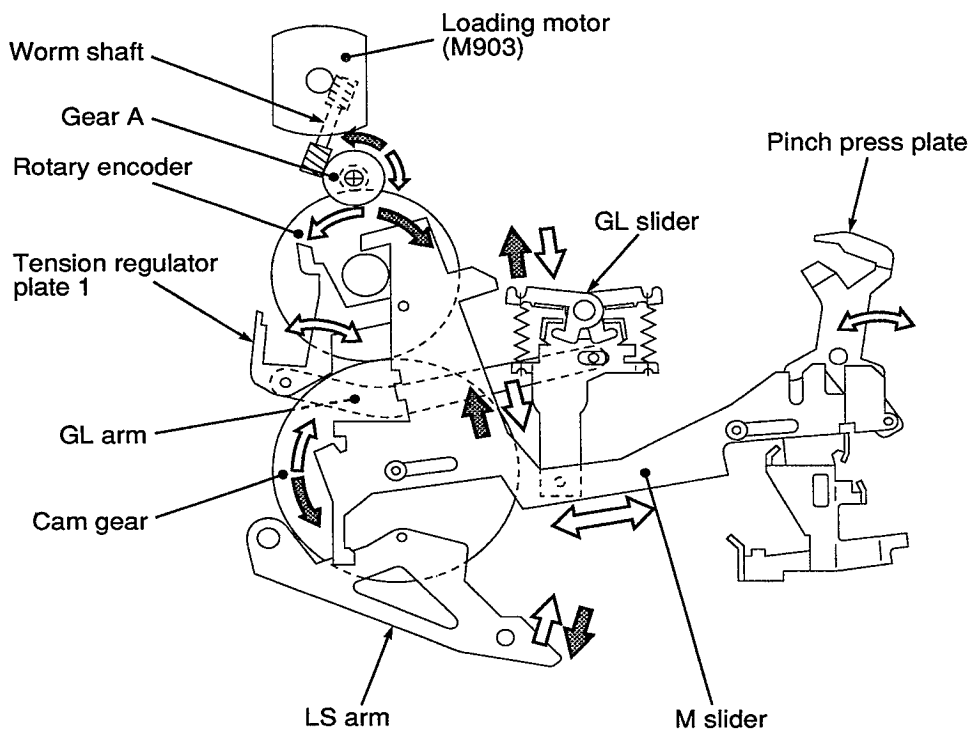
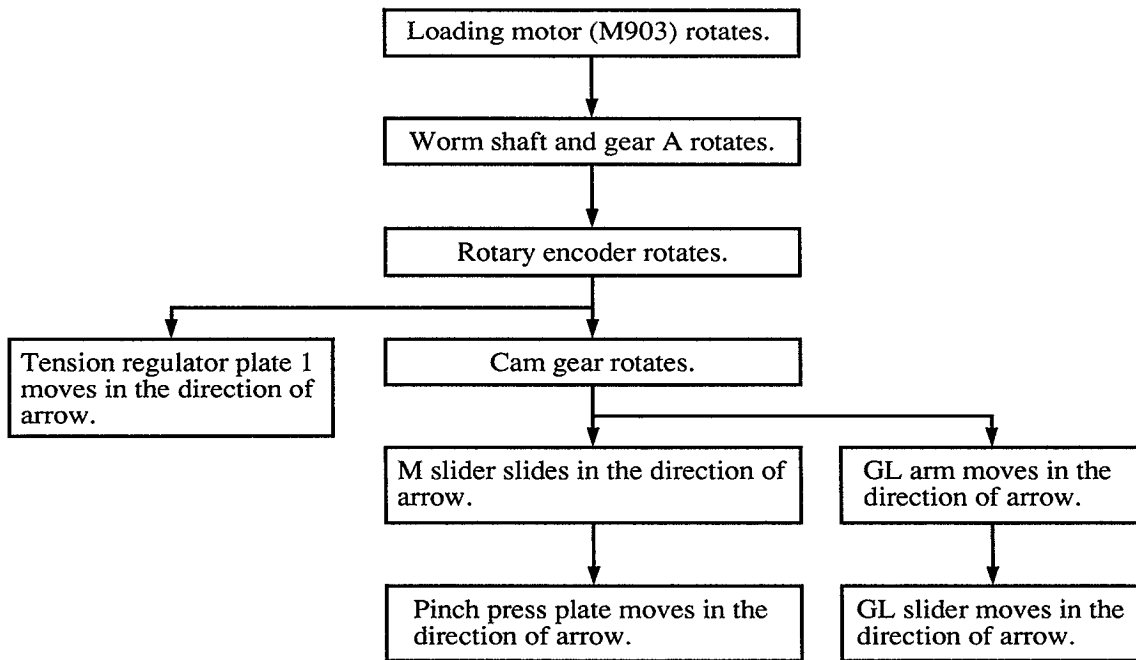
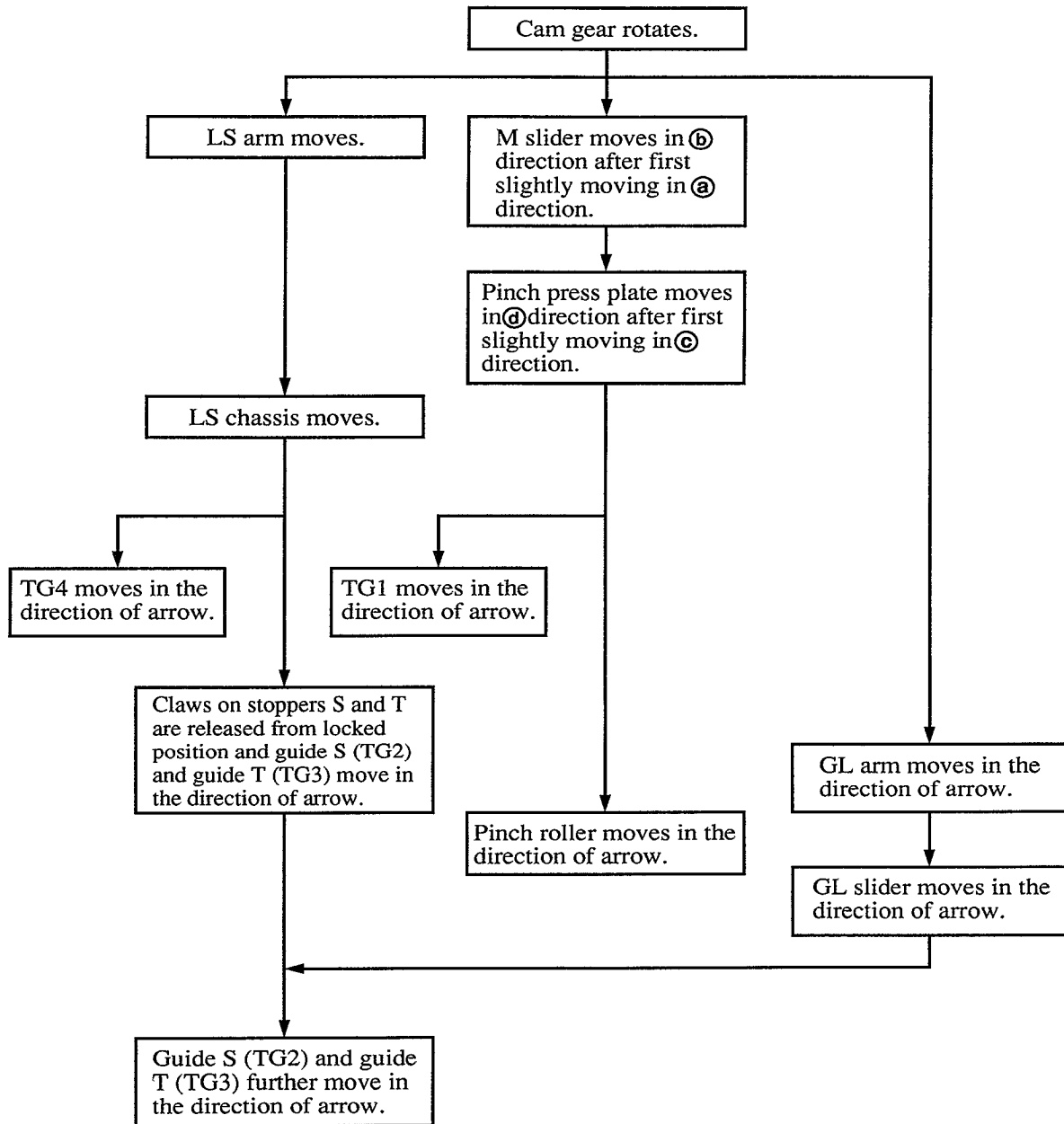


Fig. 2-1

3. Operation of each part

3-1. Driving of LS chassis



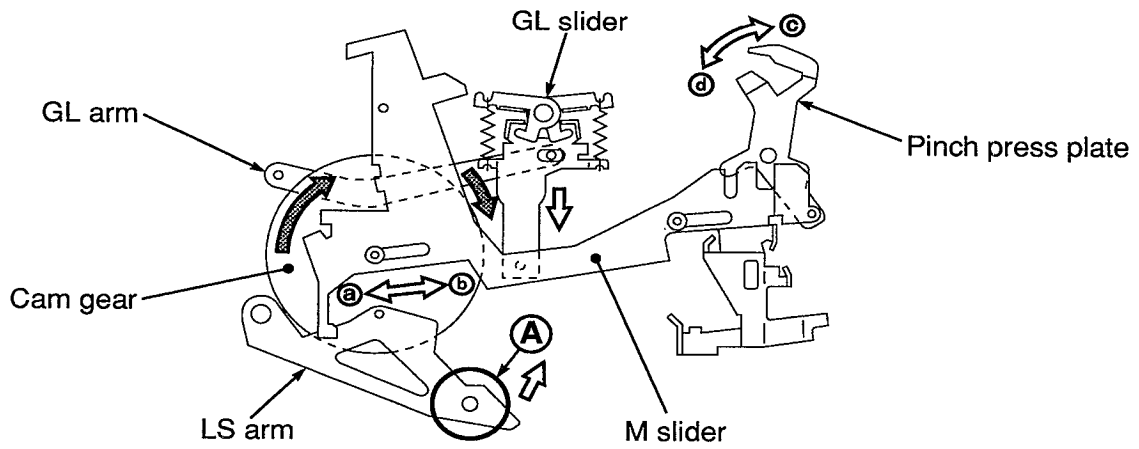


Fig. 3-1

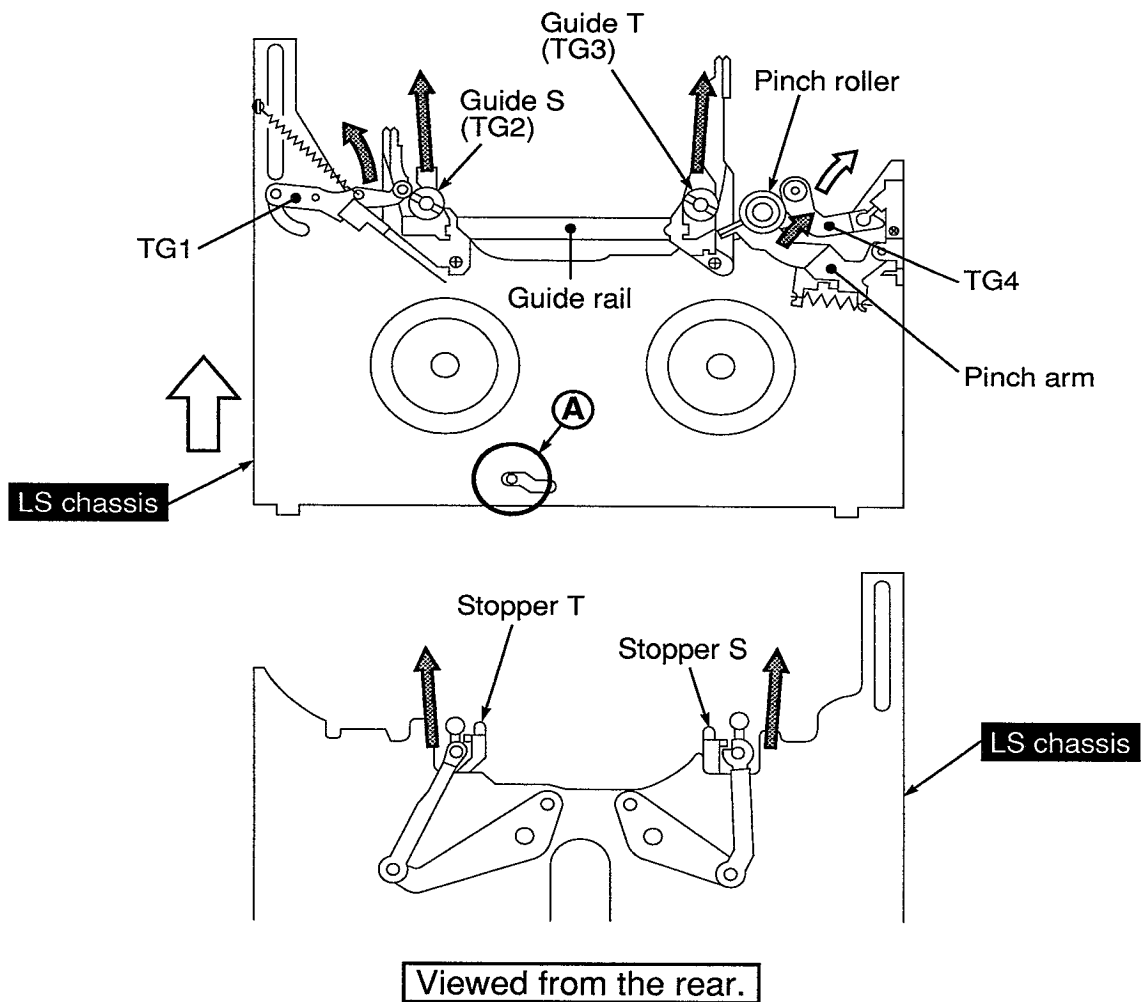
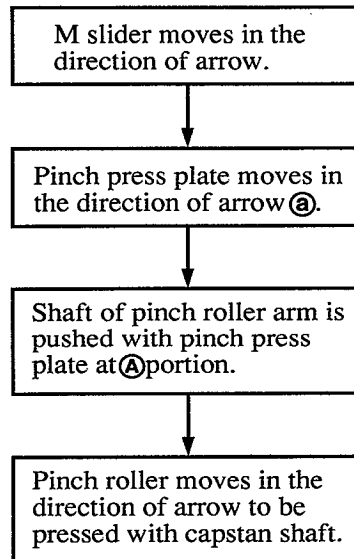


Fig. 3-2 LS chassis assembly

3-2. Driving of pinch roller



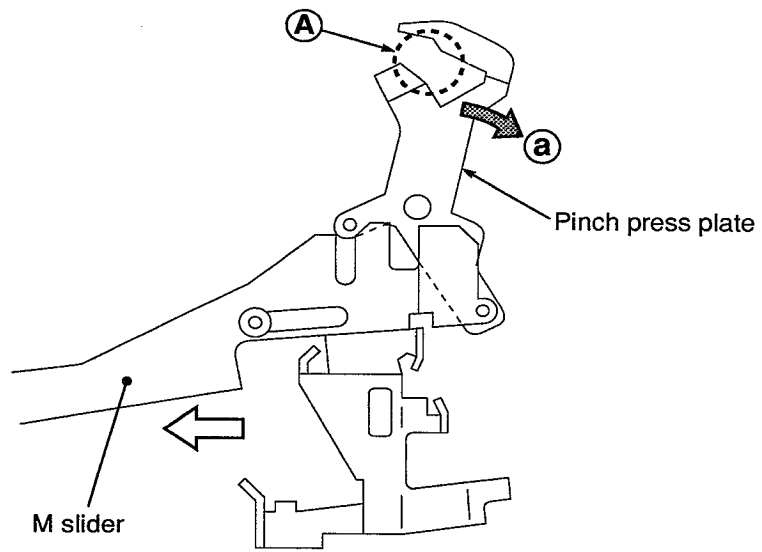


Fig. 3-3

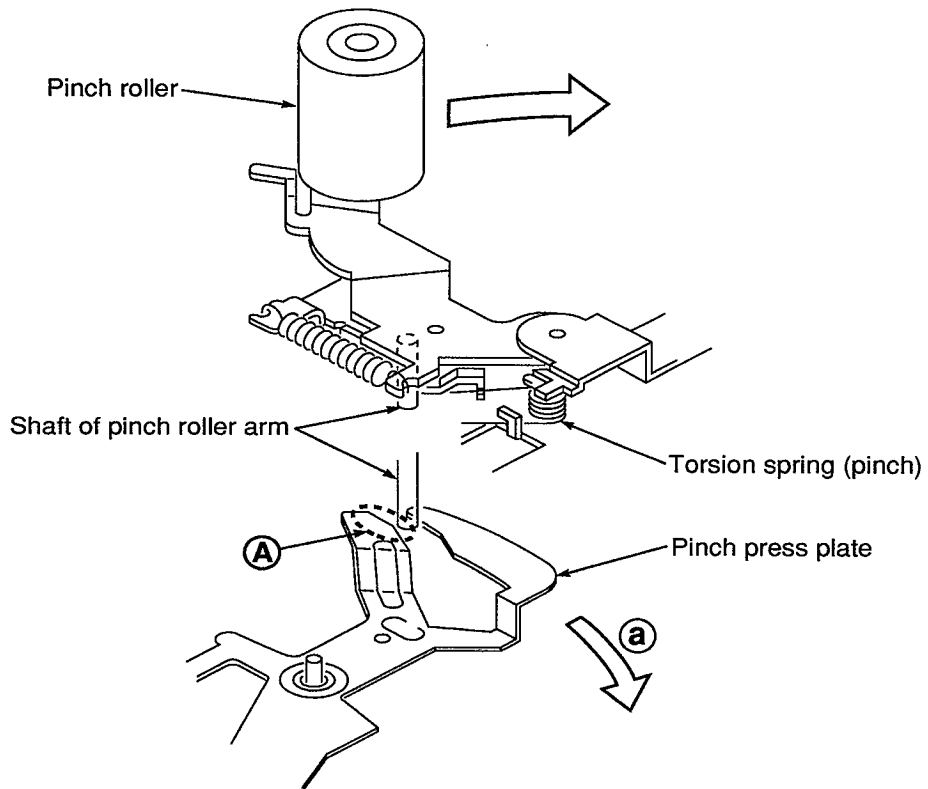
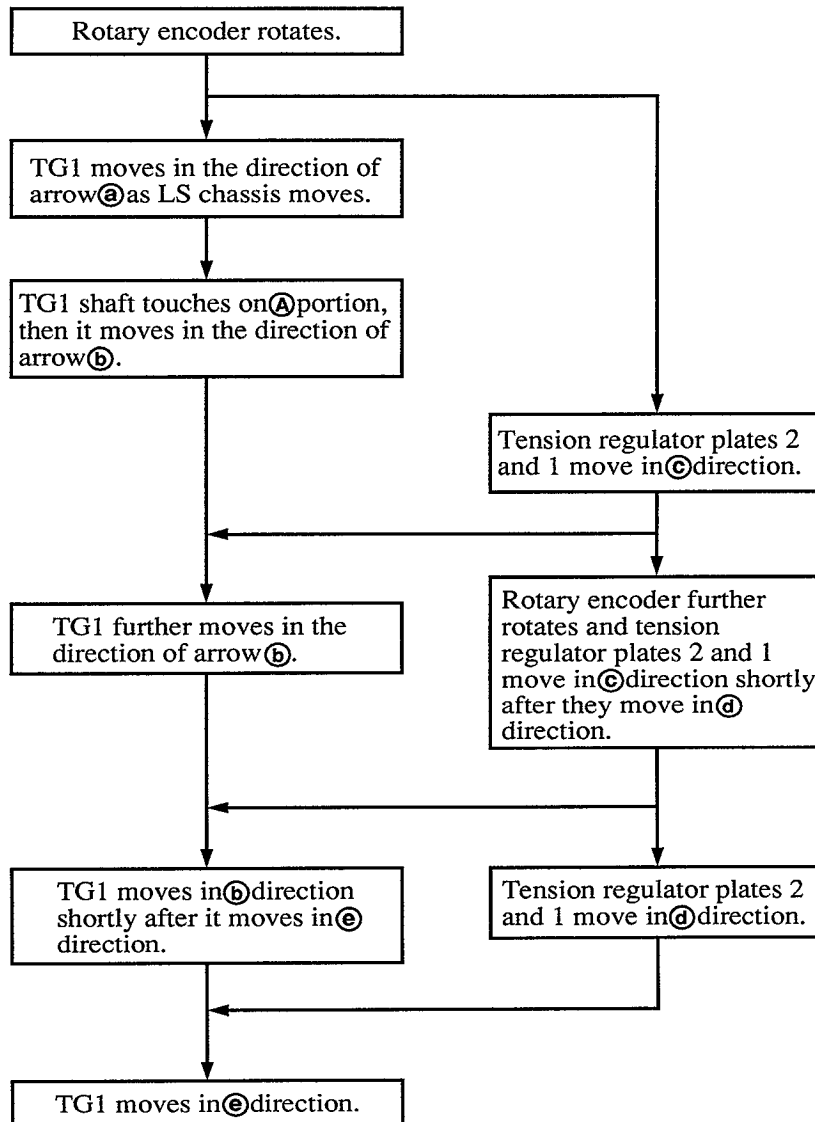


Fig. 3-4

3-3. Driving of tension regulator and TG1



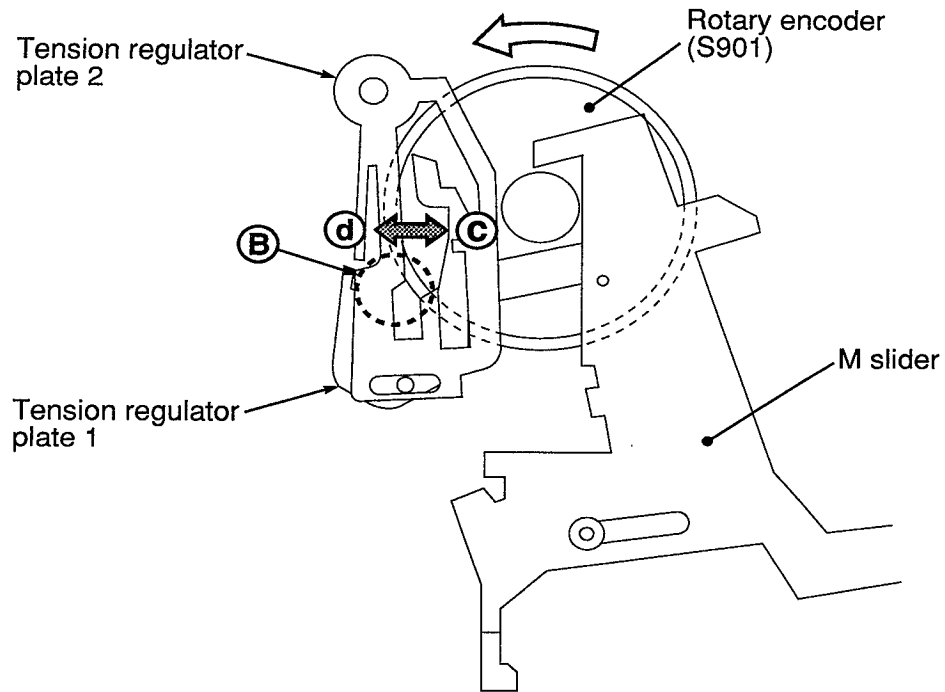


Fig. 3-5

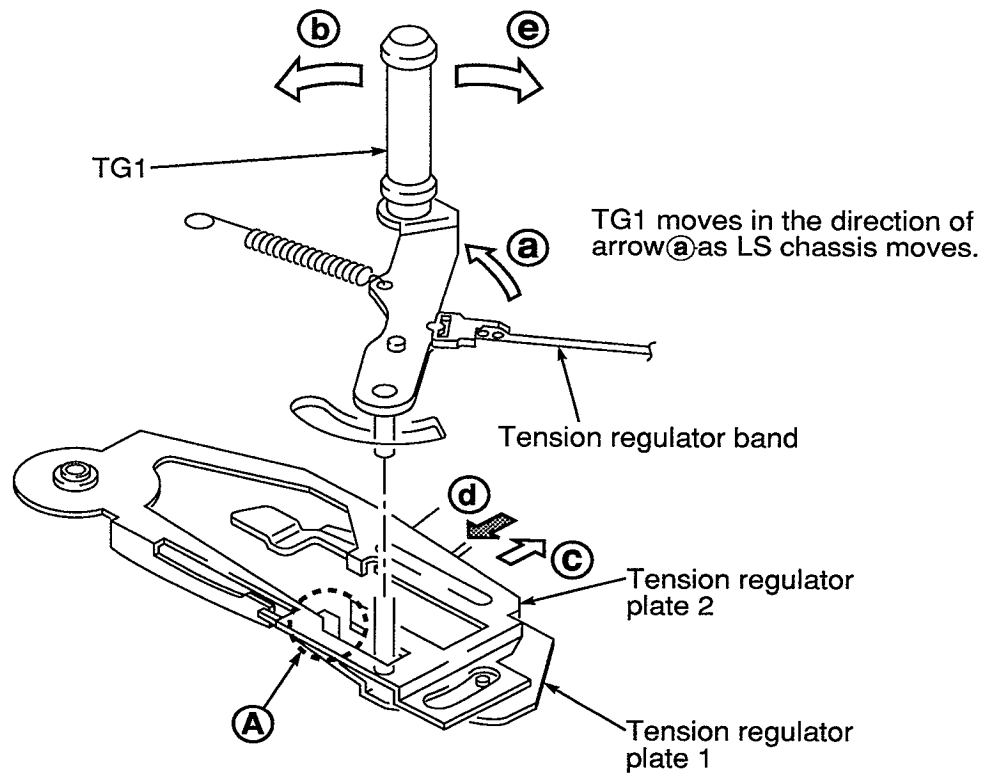
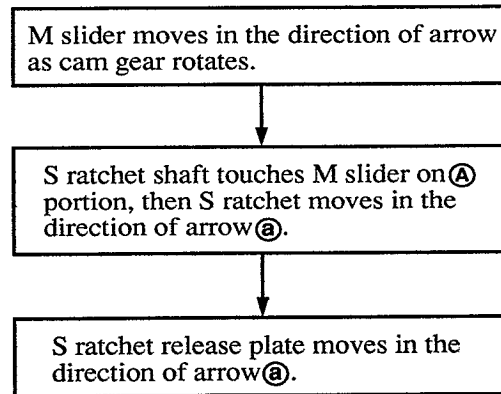


Fig. 3-6

3-4. Driving of S reel and S ratchet



* With this operation of S reel the brake is released.

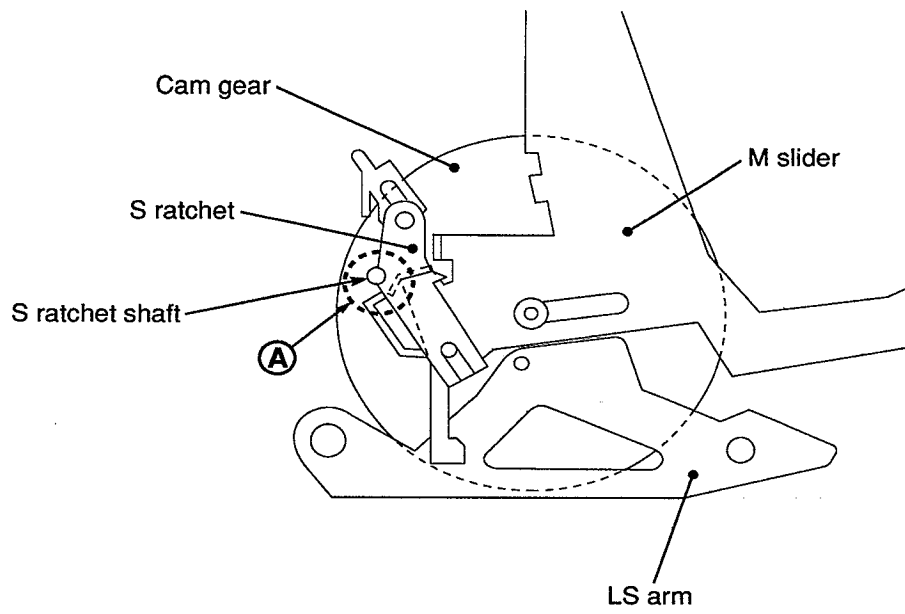


Fig. 3-7

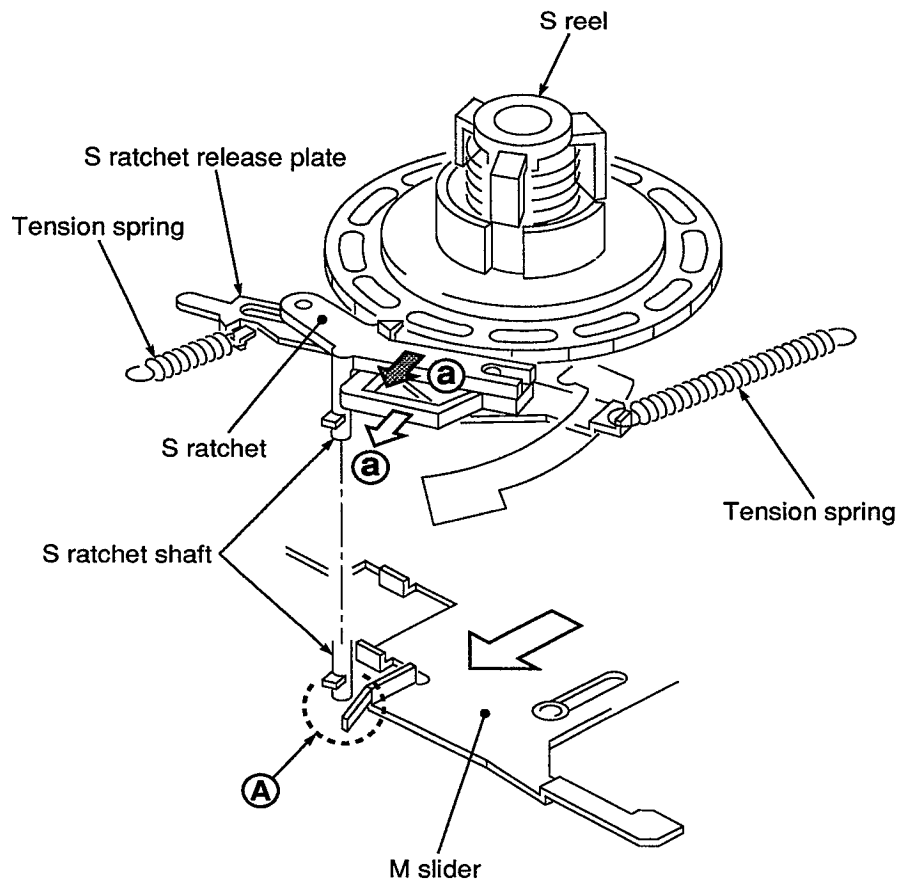
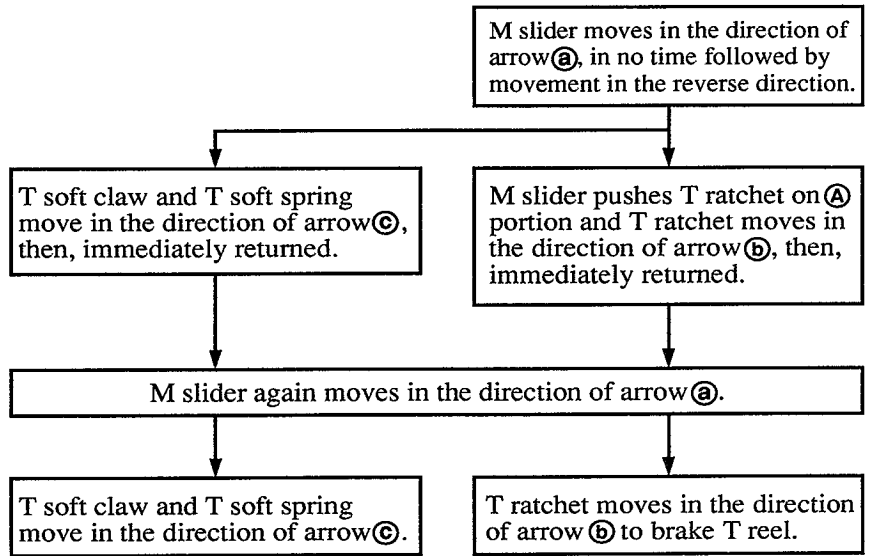


Fig. 3-8

3-5. Driving of T ratchet and T soft gear



* Under this condition T reel is locked, allowing no rotation.

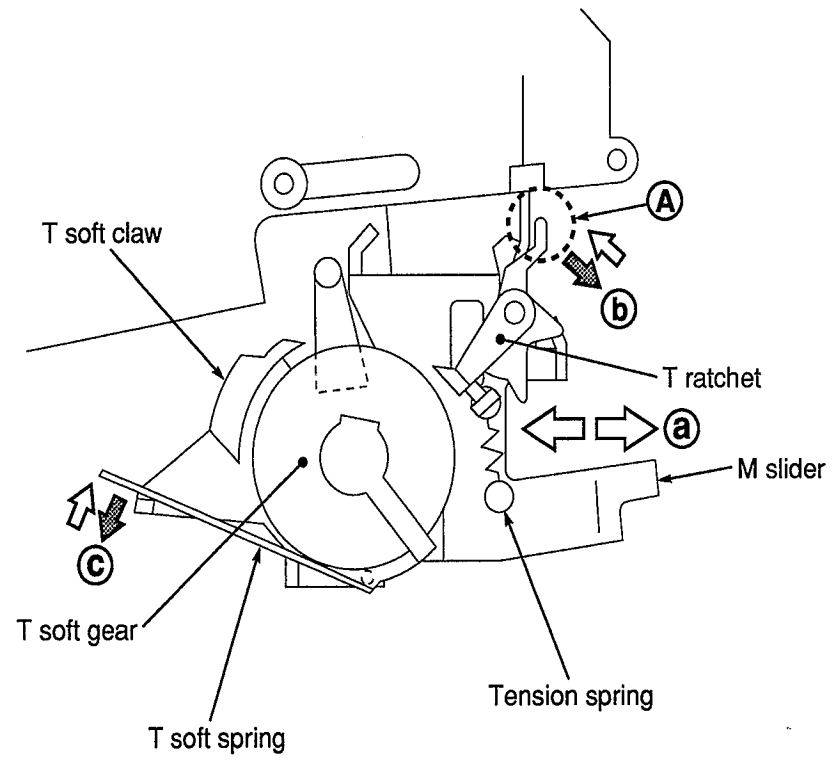


Fig. 3-9

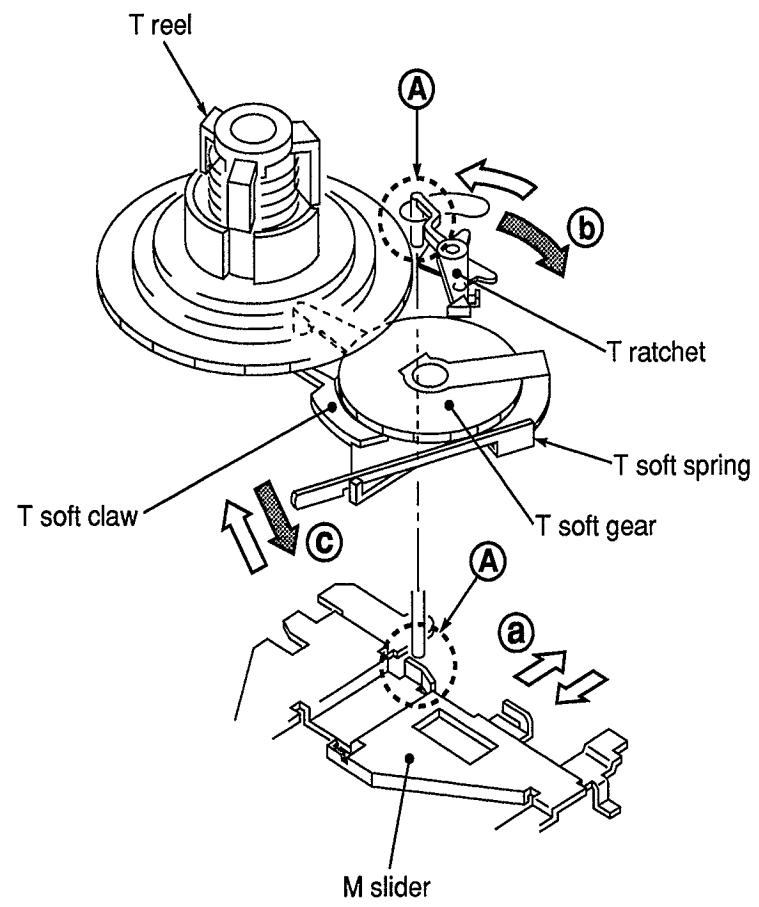
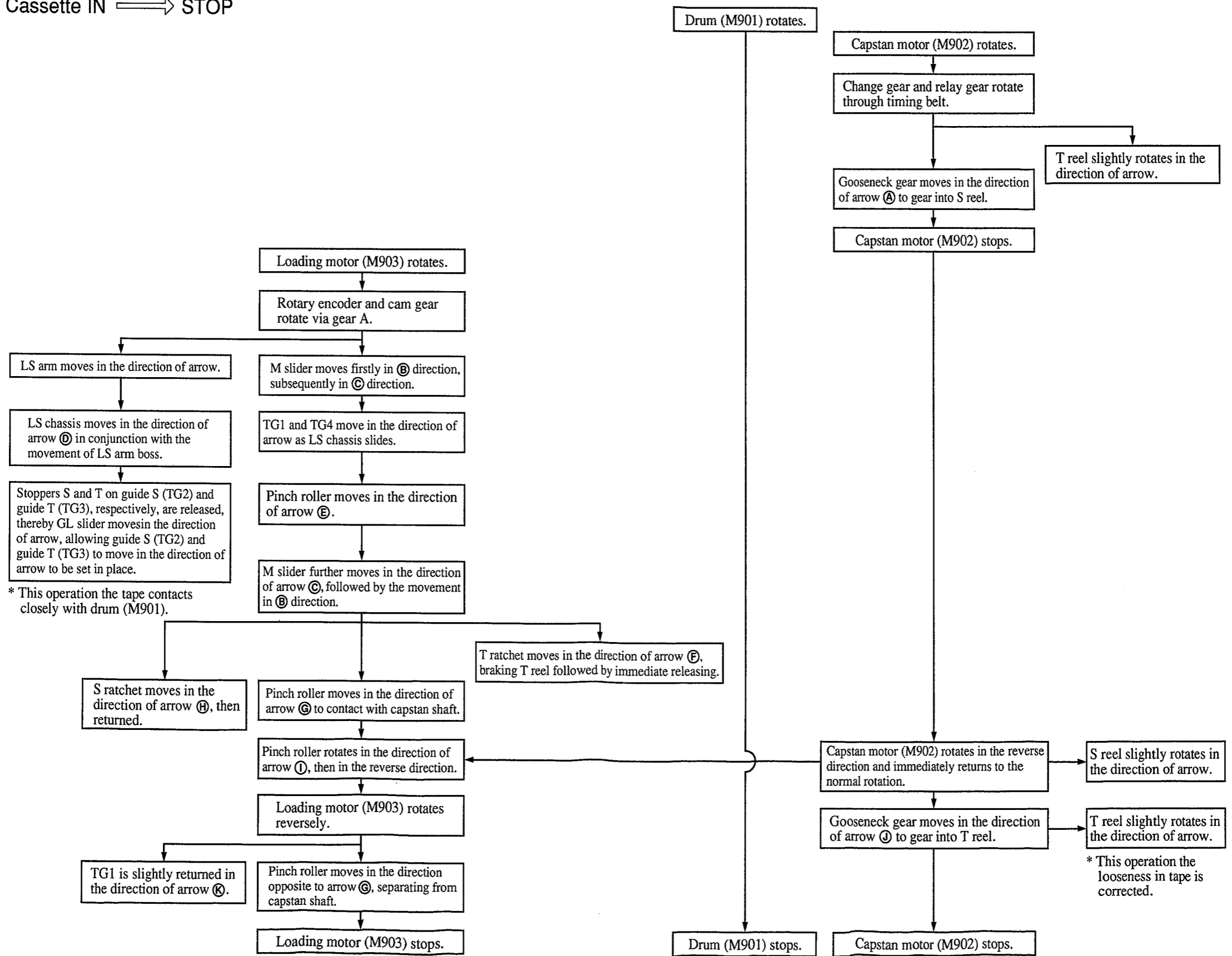


Fig. 3-10

4. Operation in each mode

4-1. Cassette IN \longrightarrow STOP



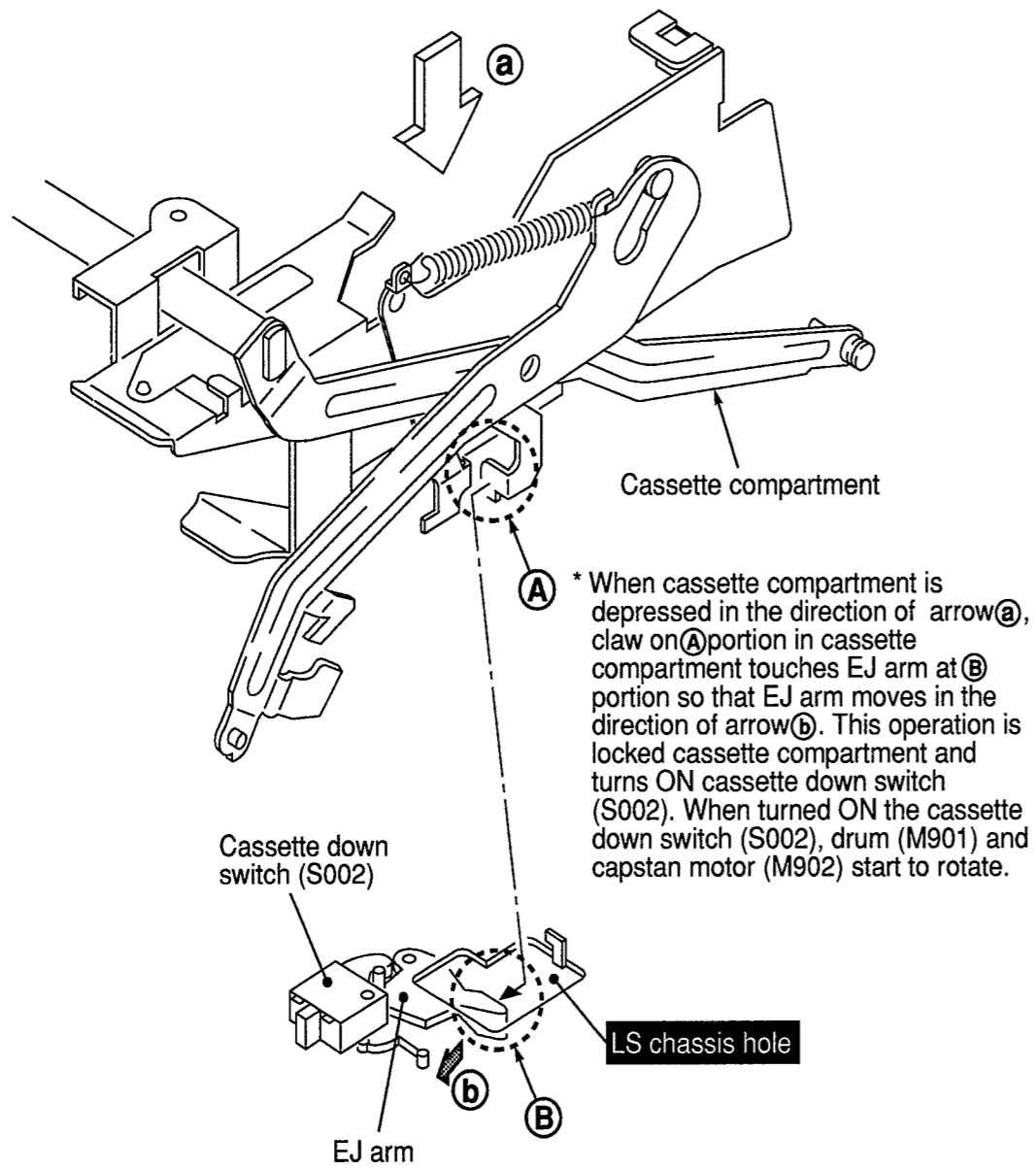


Fig. 4-1 Cassette compartment DOWN

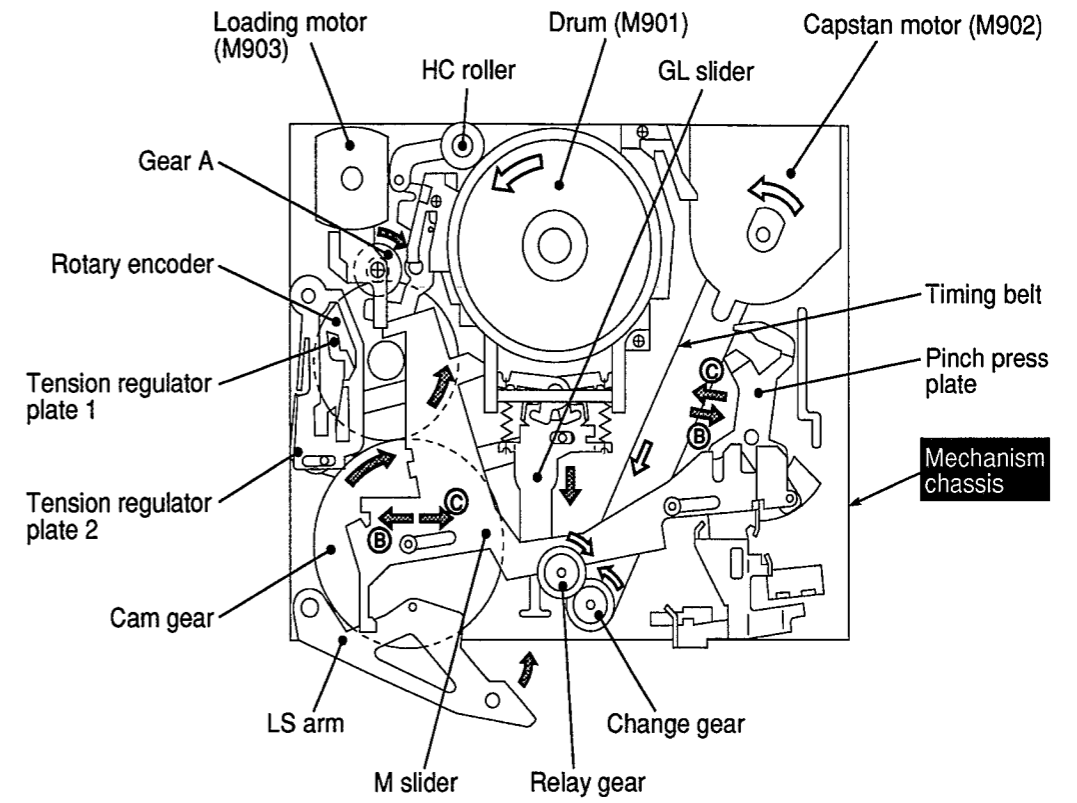


Fig. 4-2 Mechanism chassis assembly

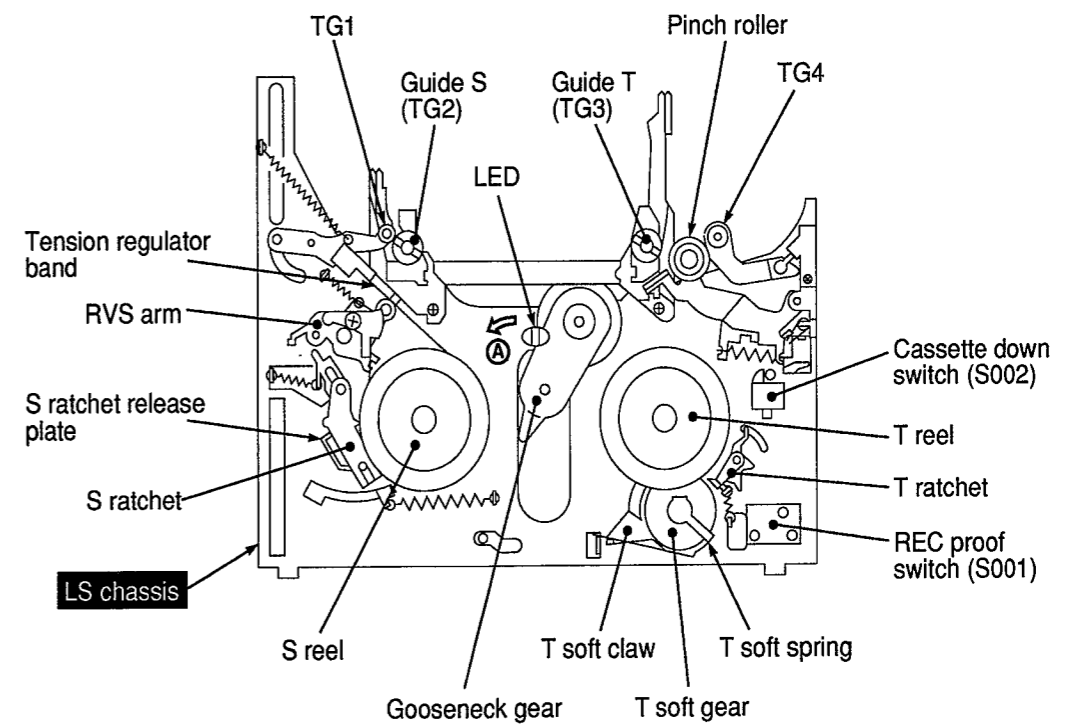
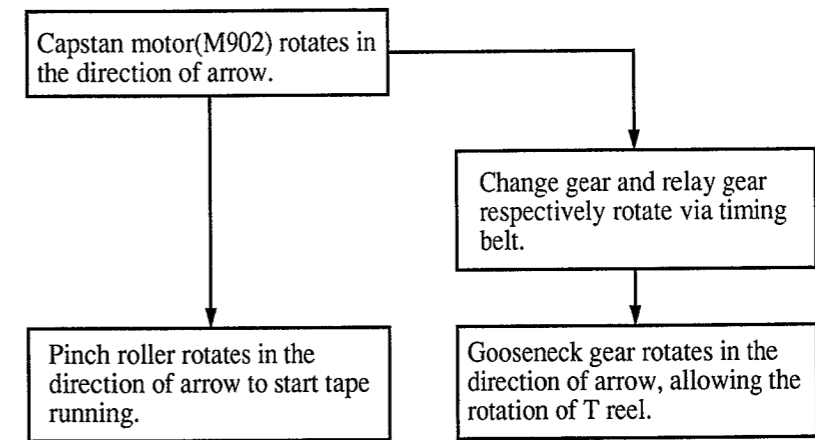
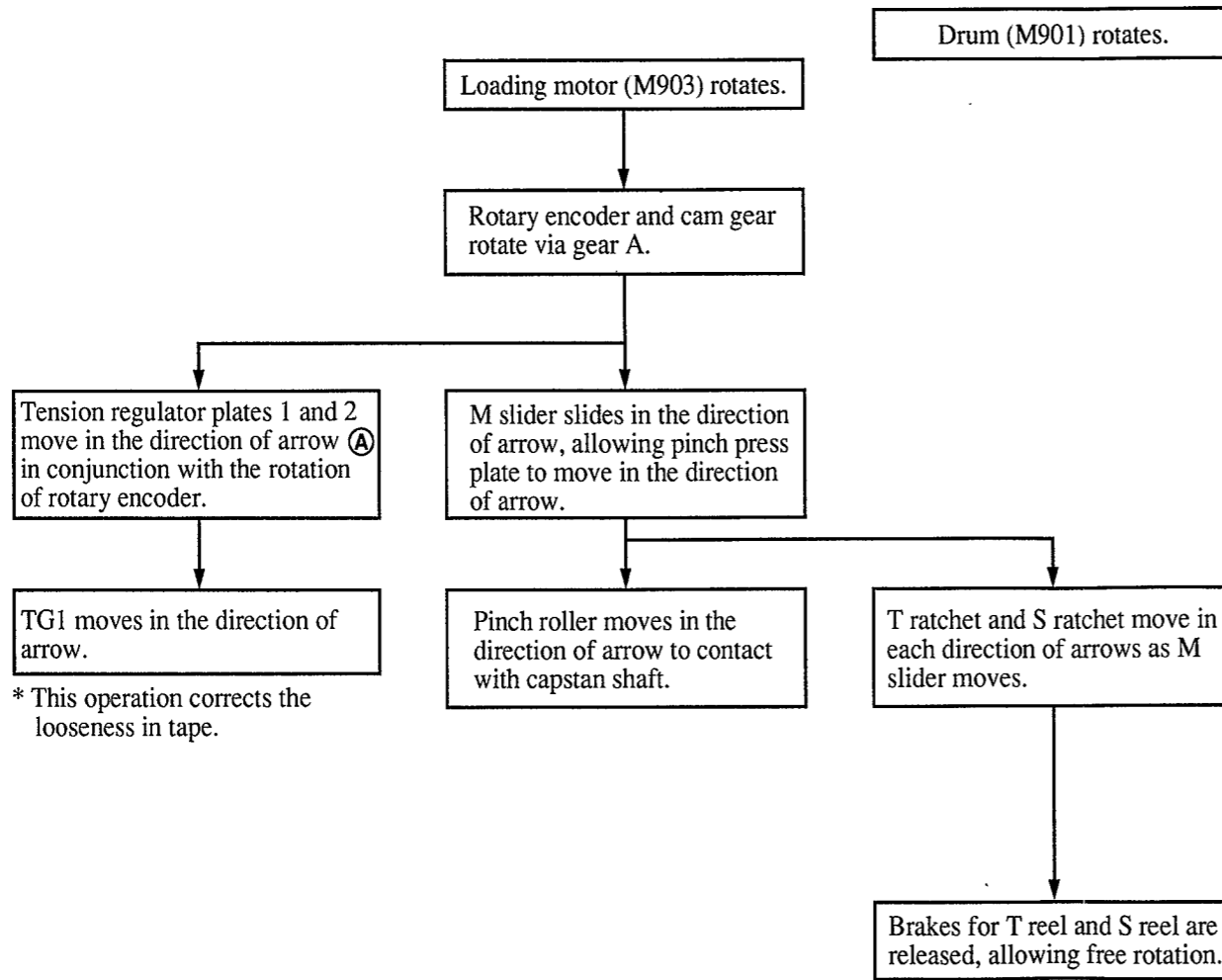


Fig. 4-3 LS chassis assembly

4-2. STOP → PB



* This operation winds tape around T reel.

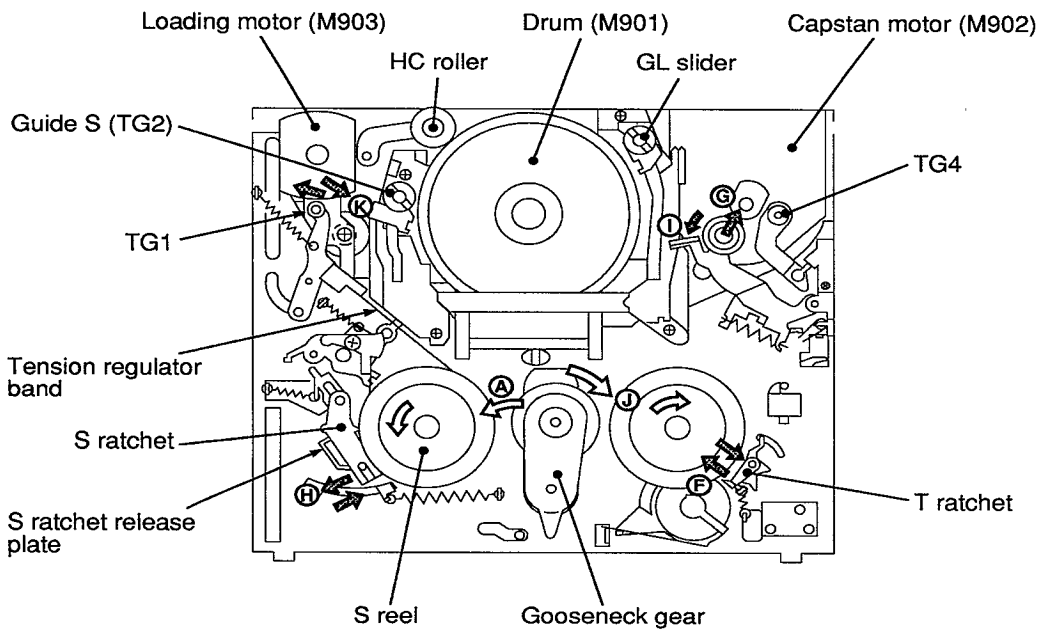
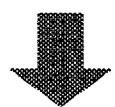
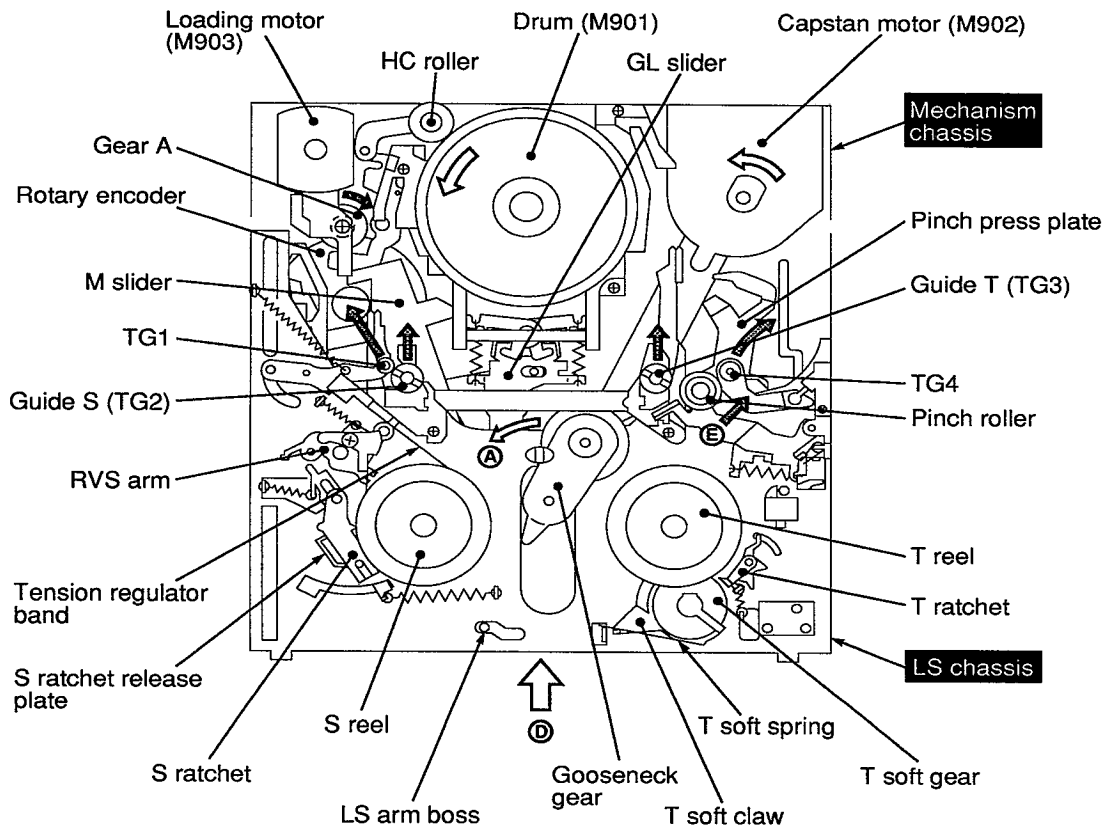
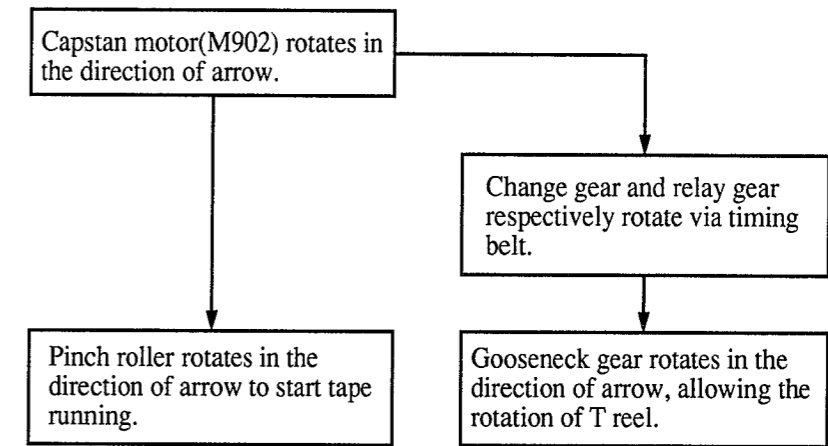
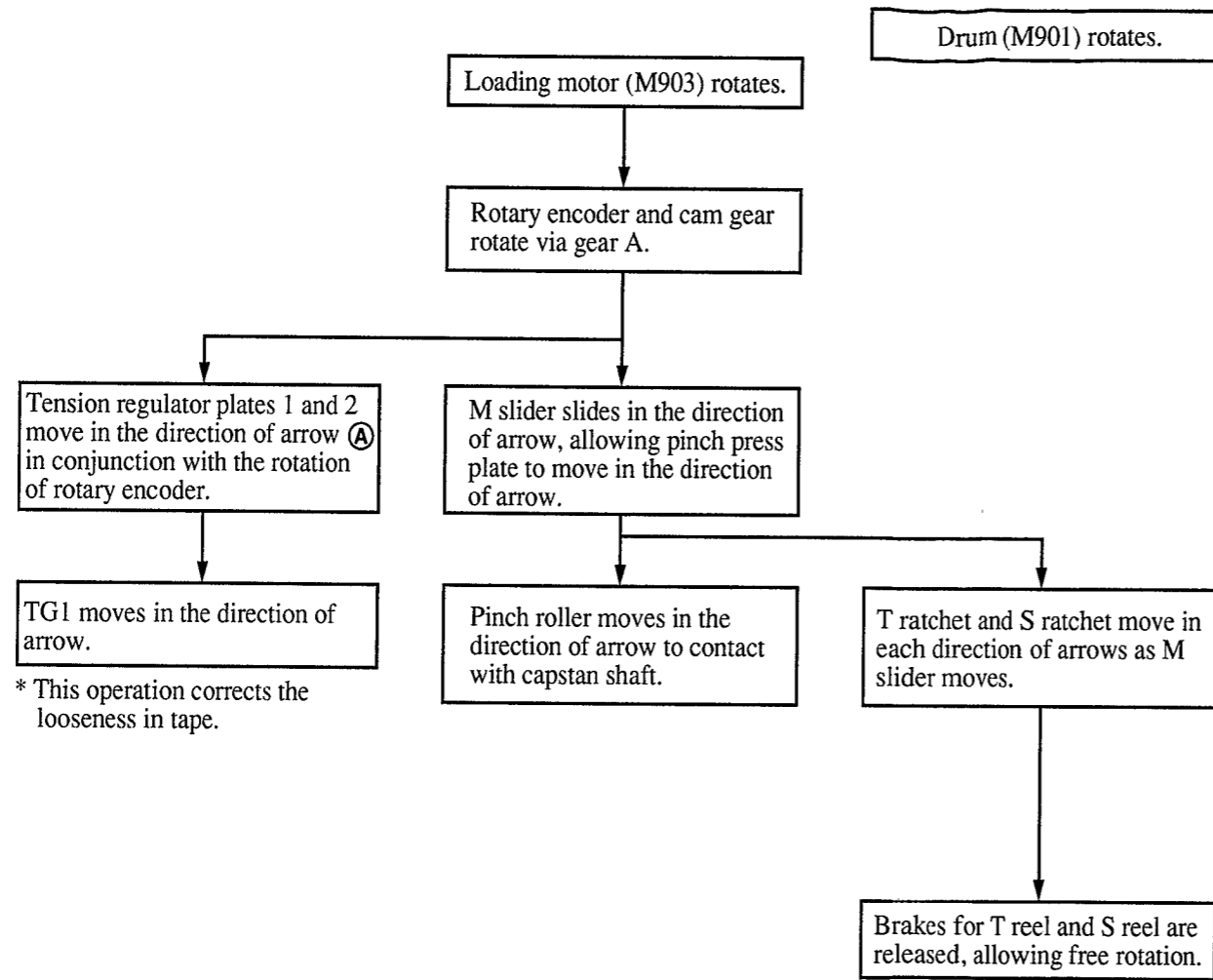


Fig. 4-4 Mechanism chassis and LS chassis assembly

4-3. STOP \implies REC



* This operation winds tape around T reel.

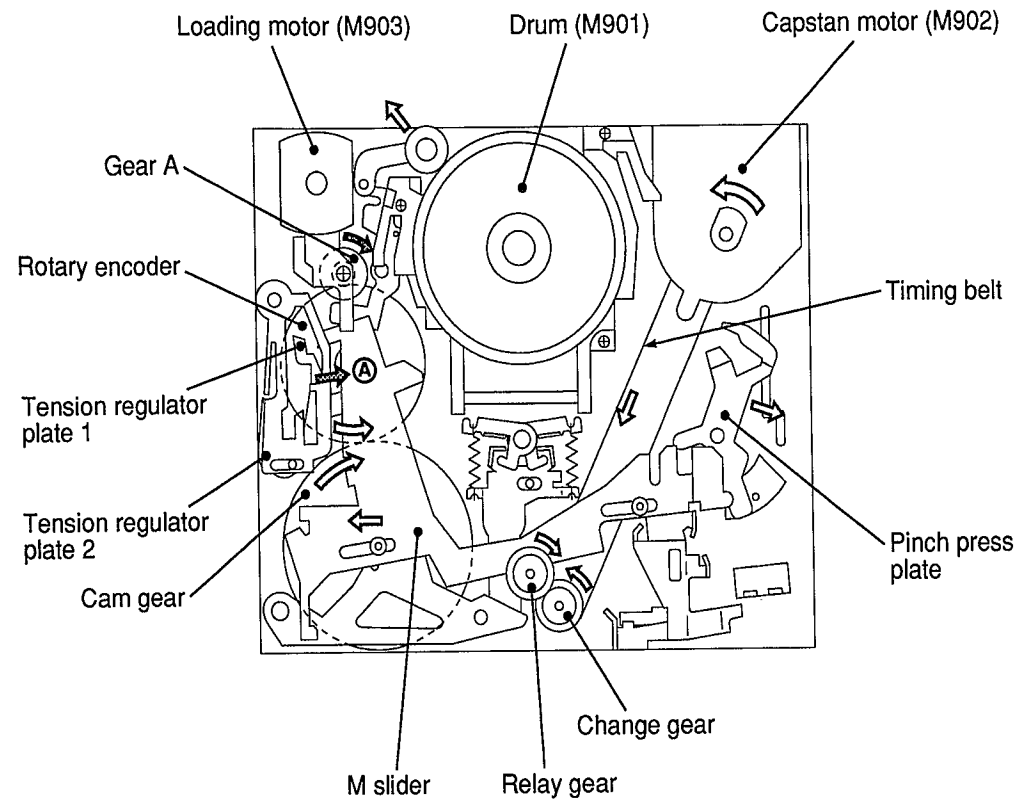


Fig. 4-5 Mechanism chassis assembly

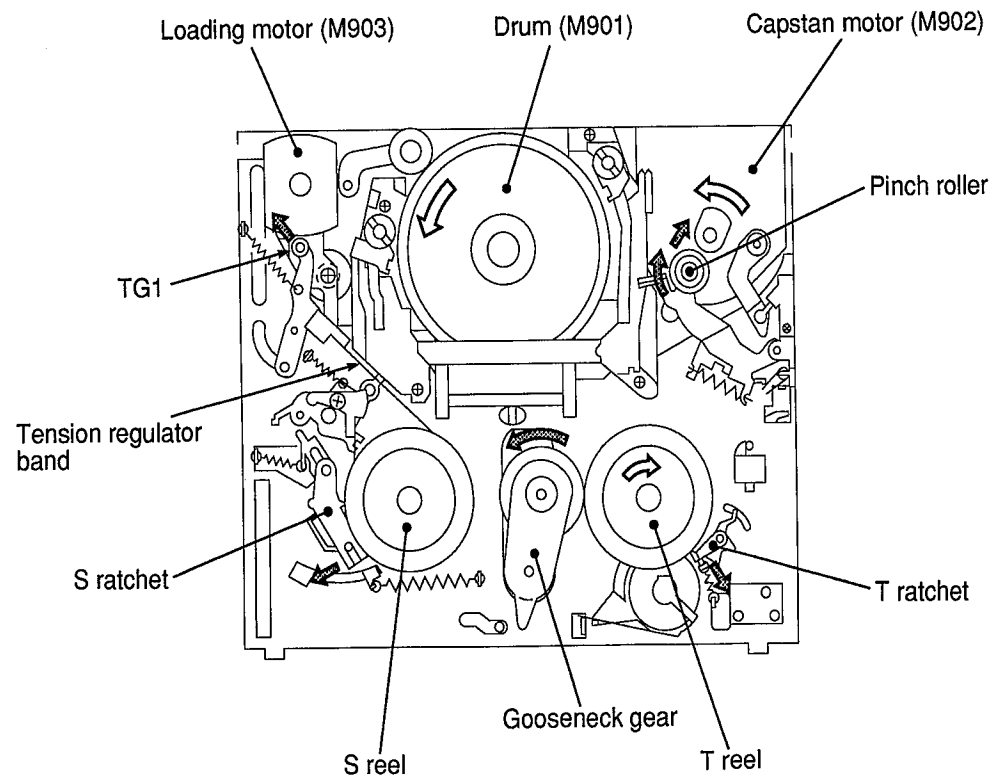
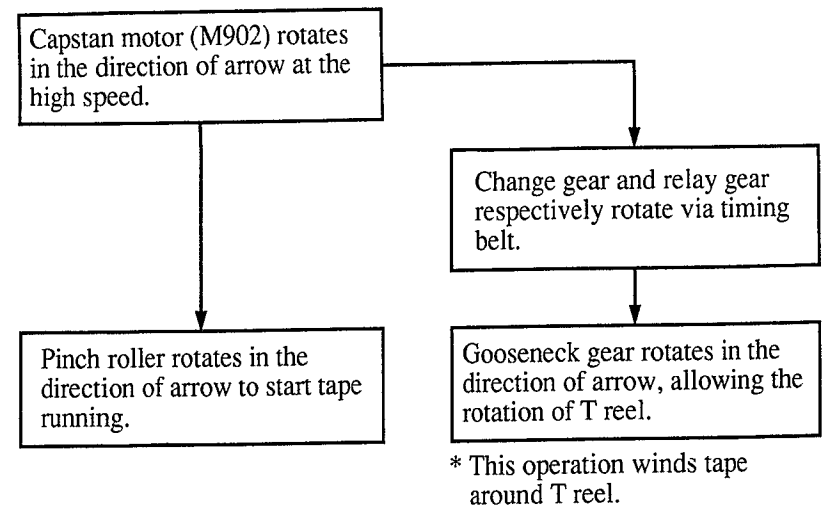
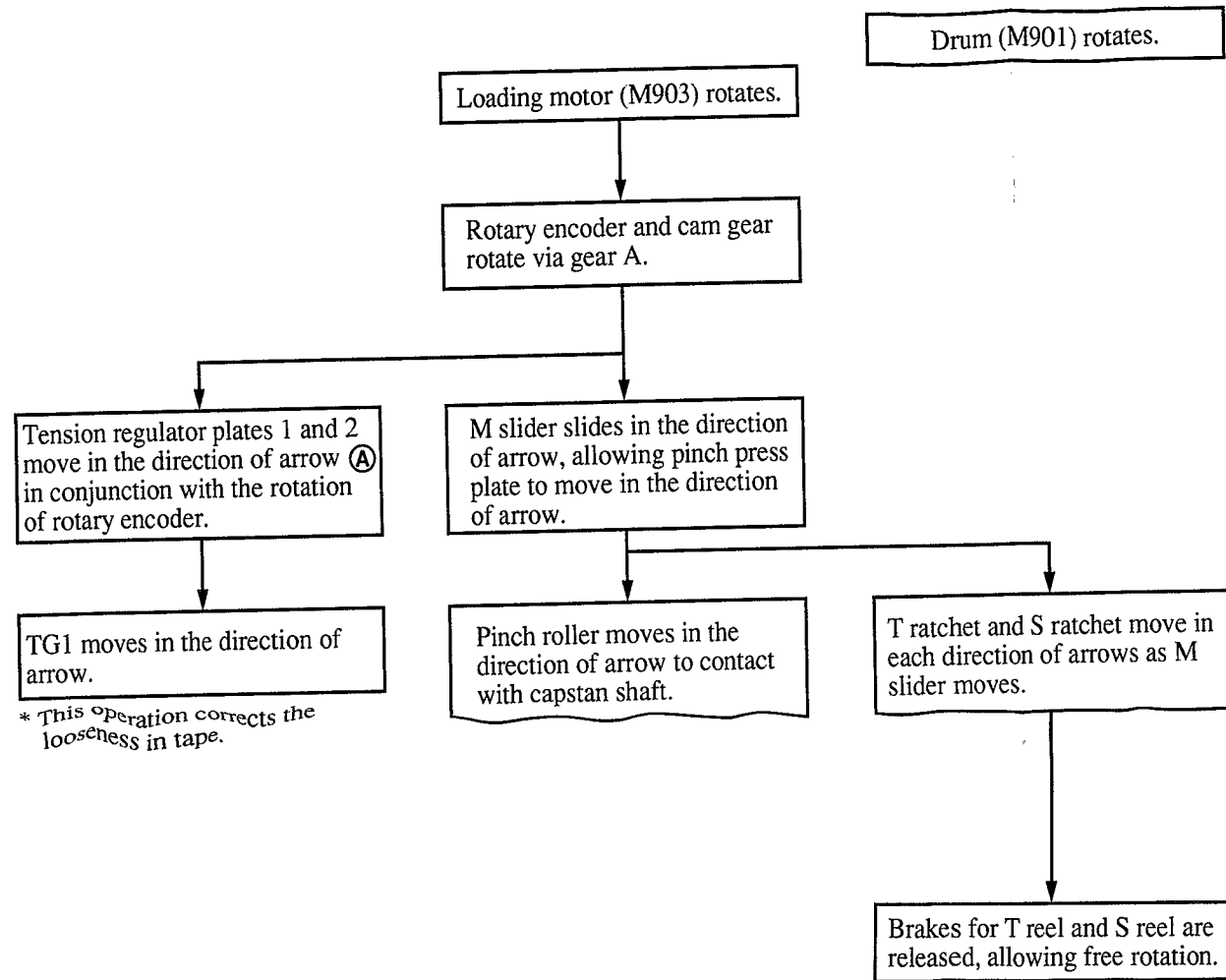


Fig. 4-6 Mechanism chassis and LS chassis assembly

4-4. STOP \longrightarrow FF



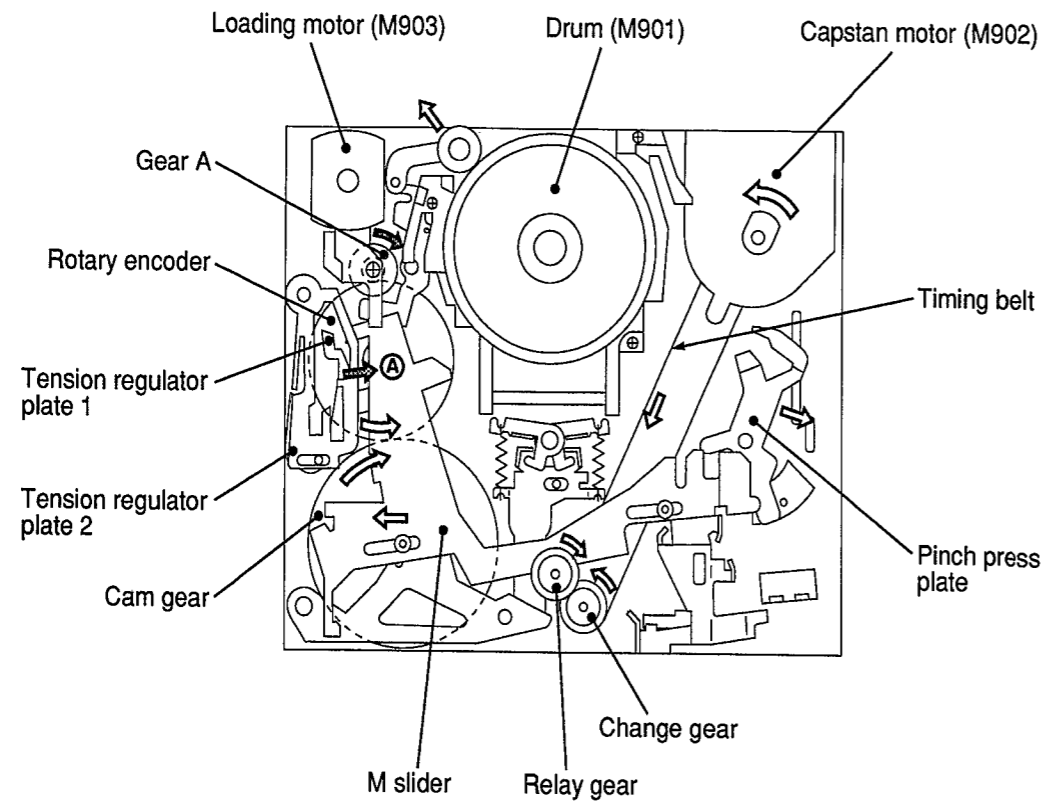


Fig. 4-7 Mechanism chassis assembly

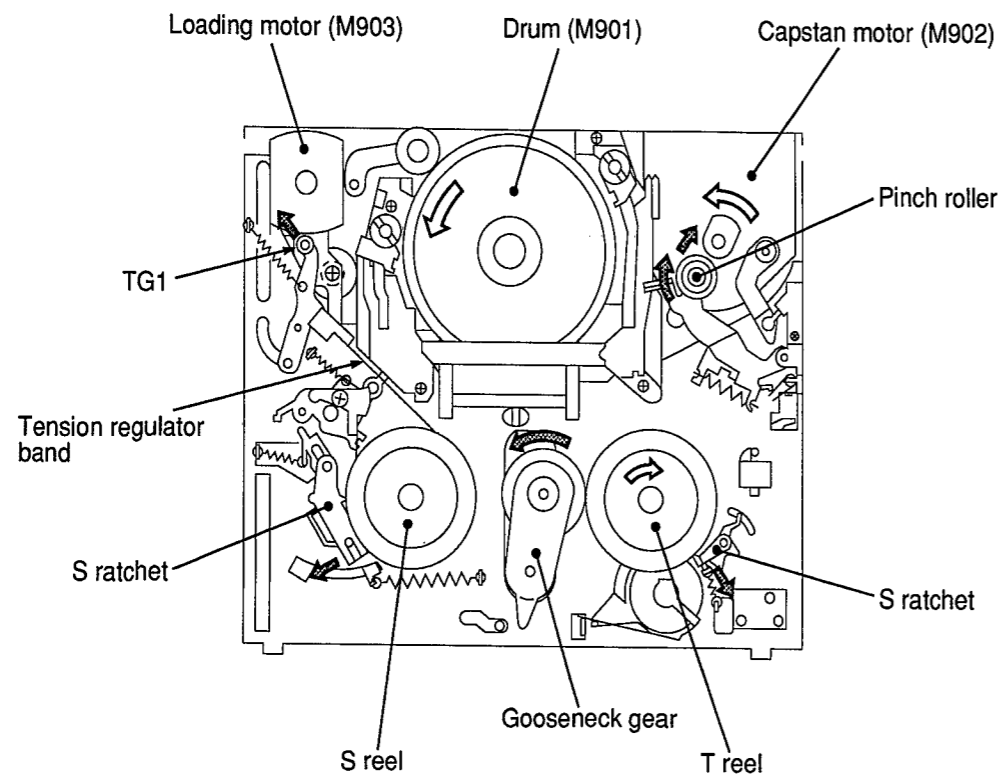


Fig. 4-8 Mechanism chassis and LS chassis assembly

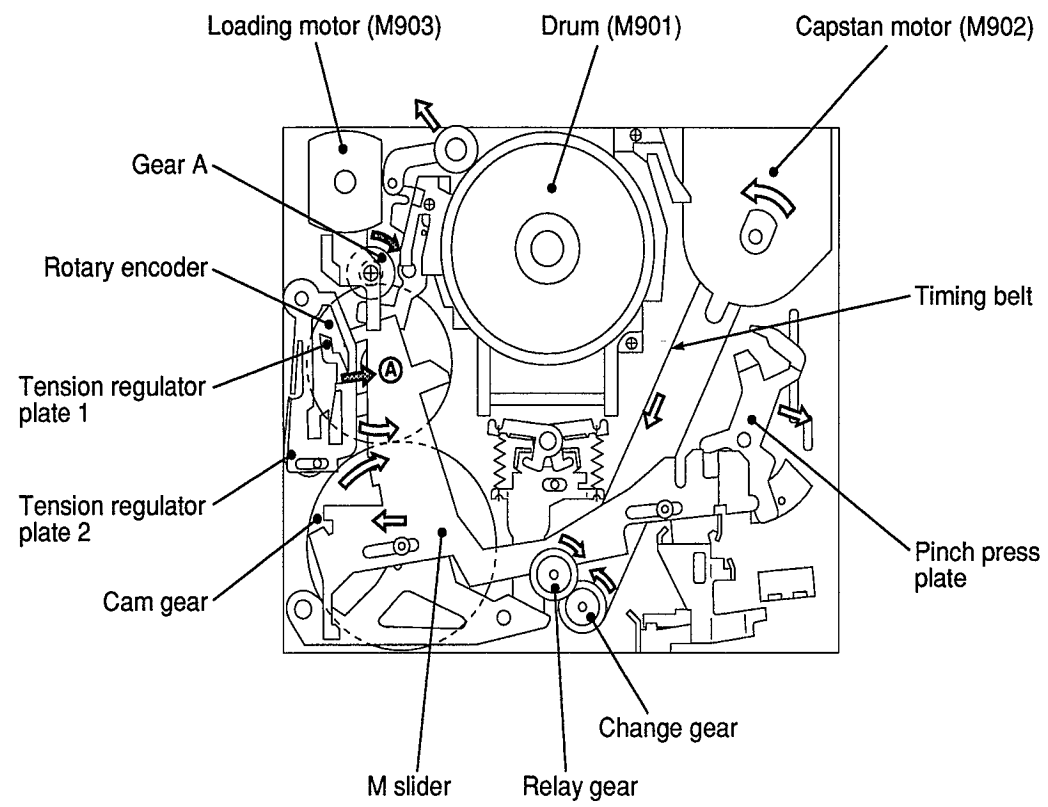


Fig. 4-9 Mechanism chassis assembly

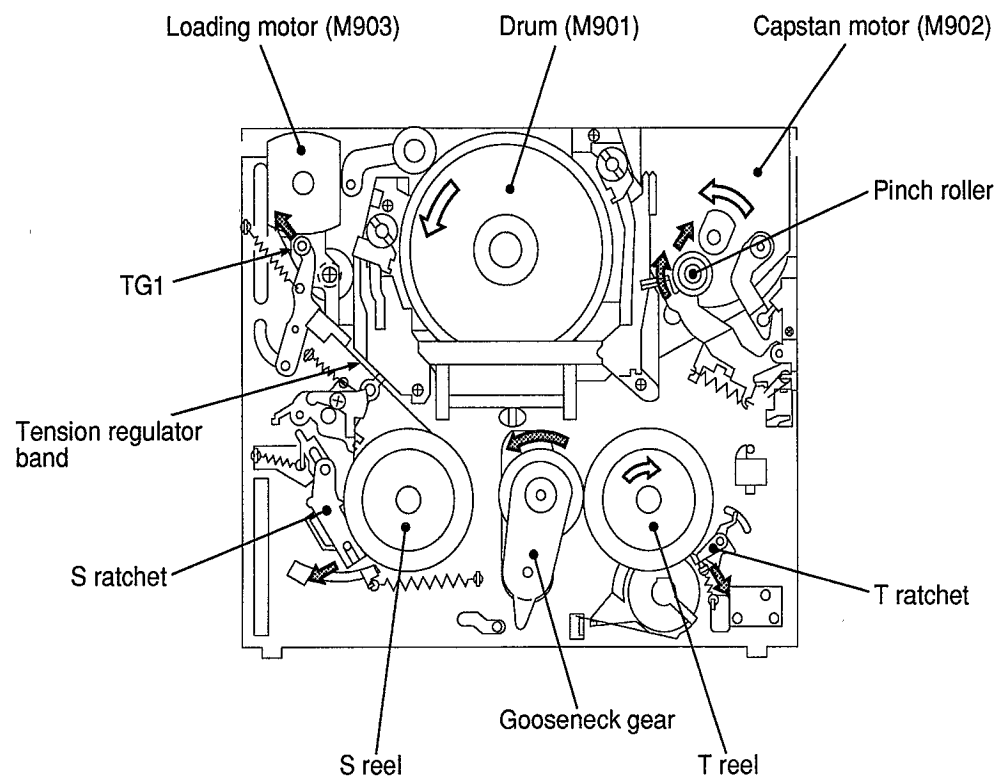
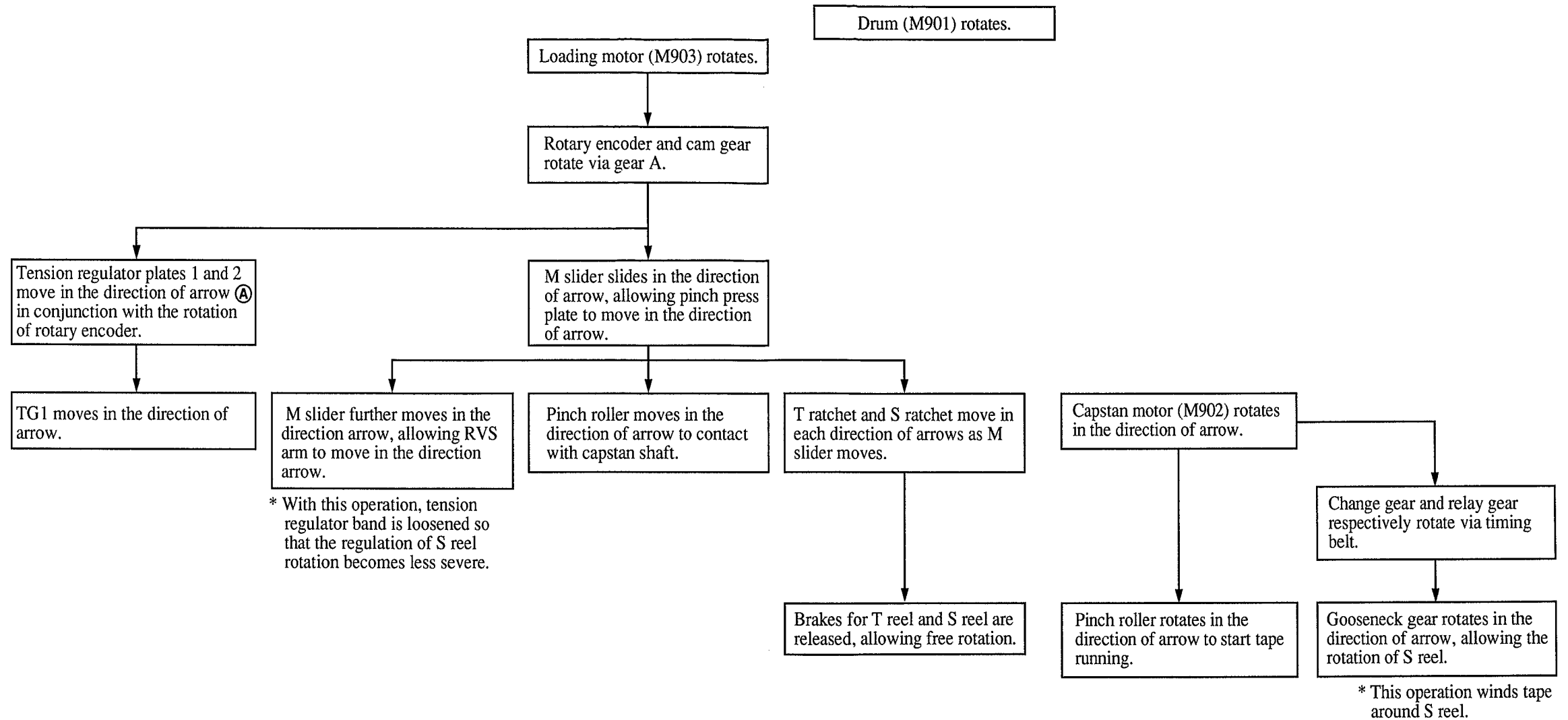


Fig. 4-10 Mechanism chassis and LS chassis assembly

4-5. STOP \implies REWIND



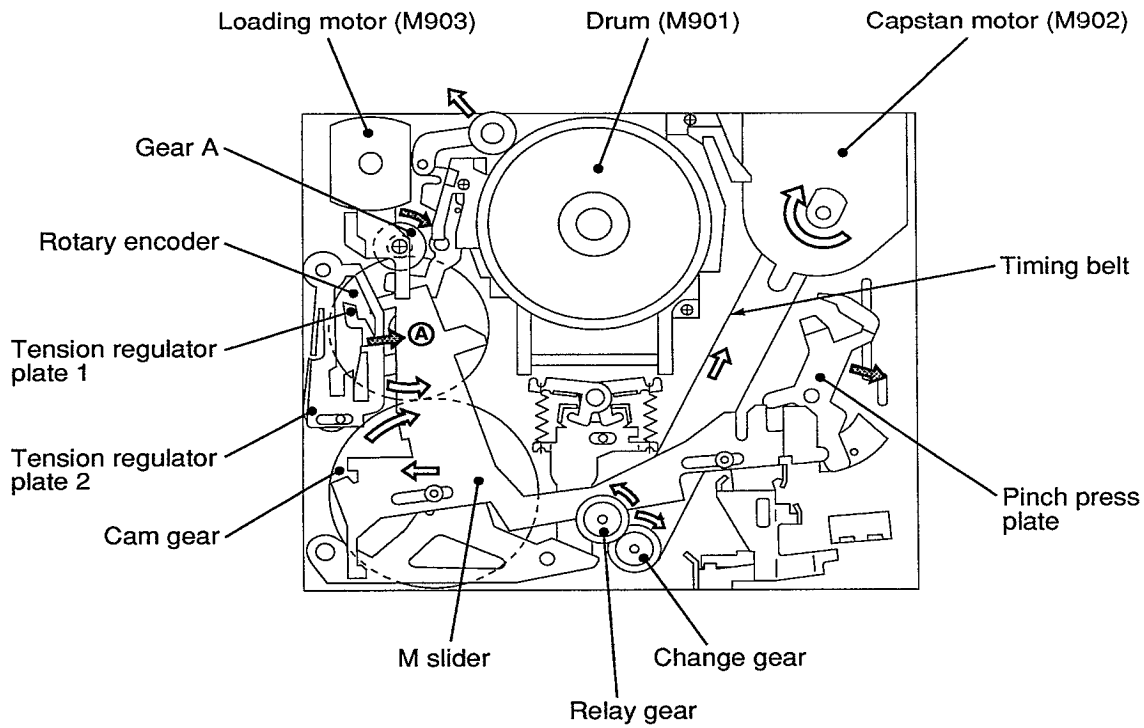


Fig. 4-11 Mechanism chassis assembly

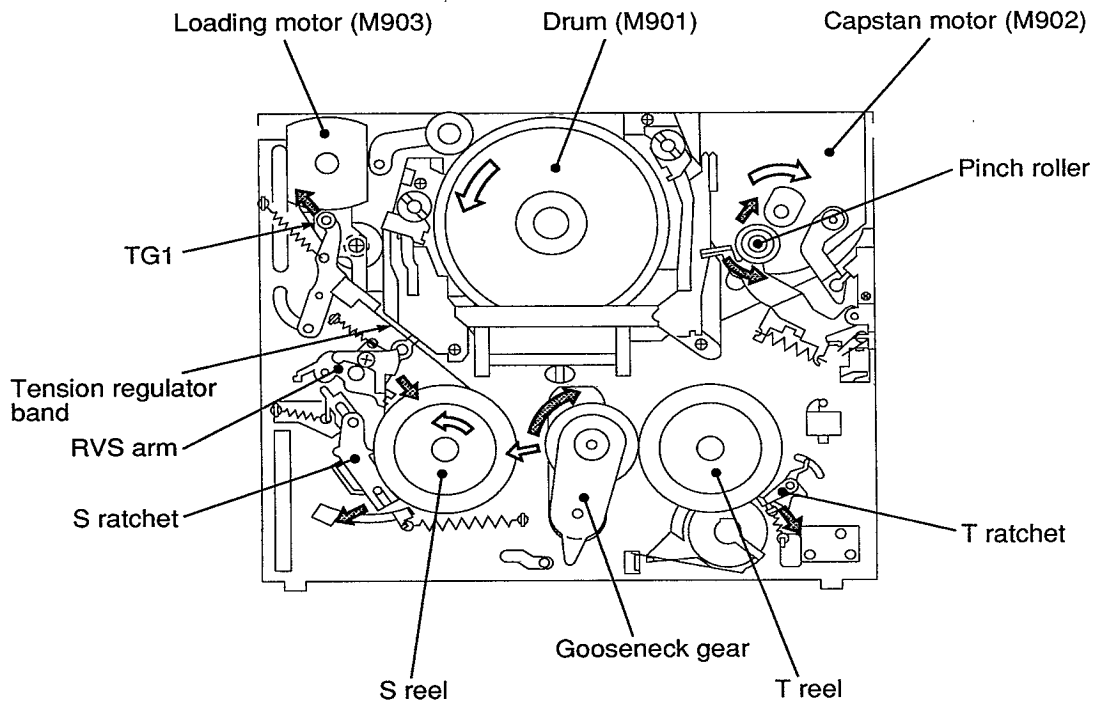
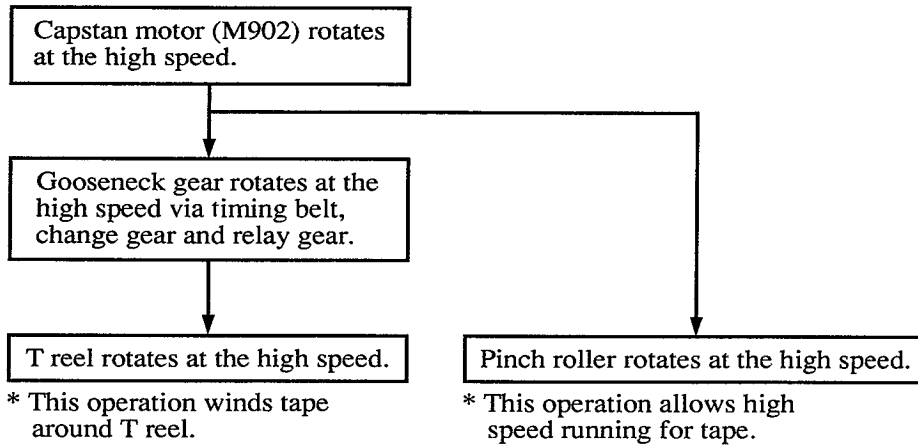


Fig. 4-12 Mechanism chassis and LS chassis assembly

4-6. PB \Longrightarrow CUE



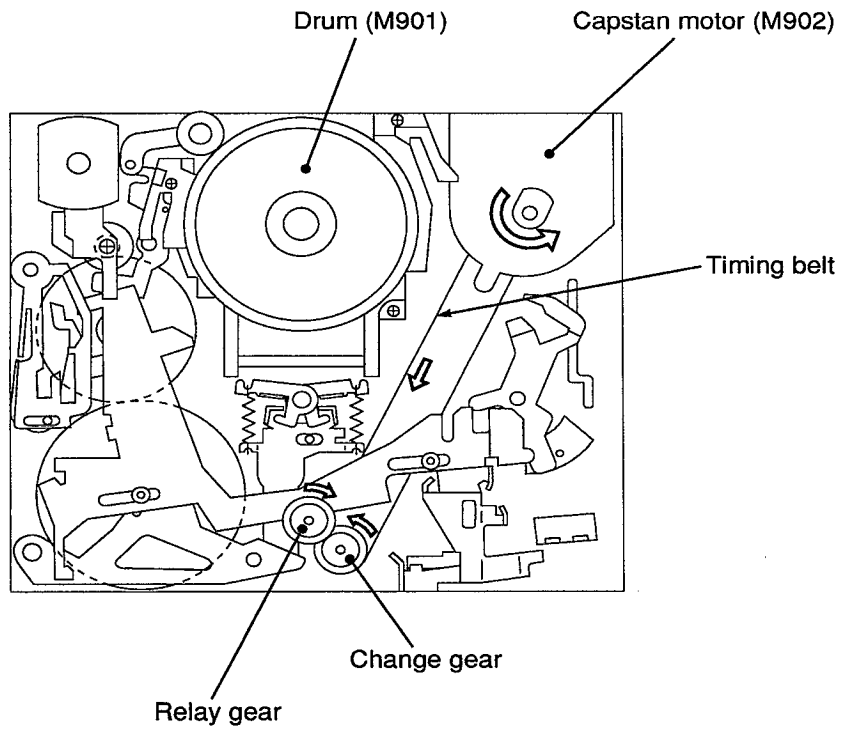


Fig. 4-13 Mechanism chassis assembly

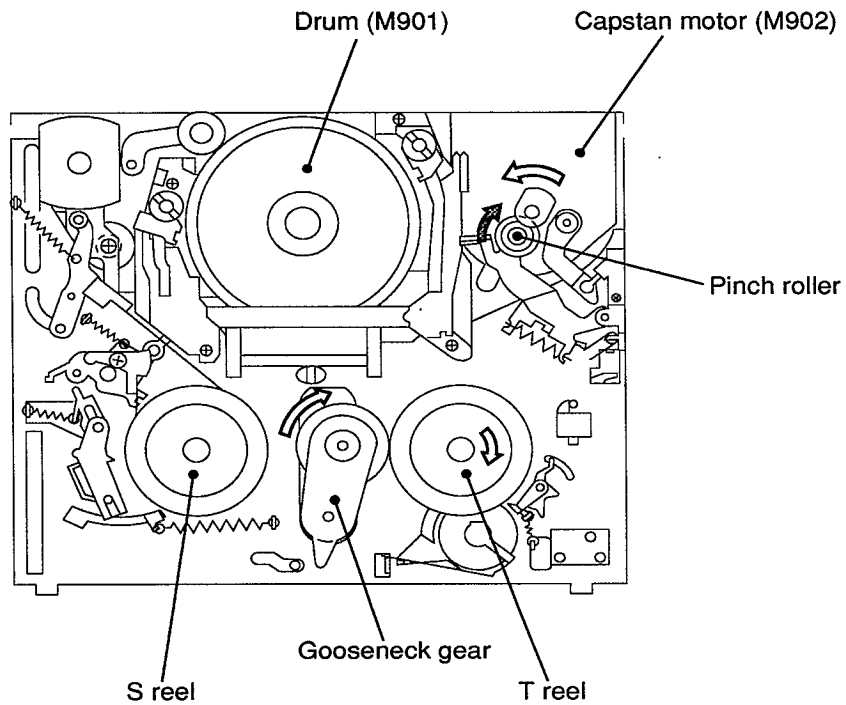
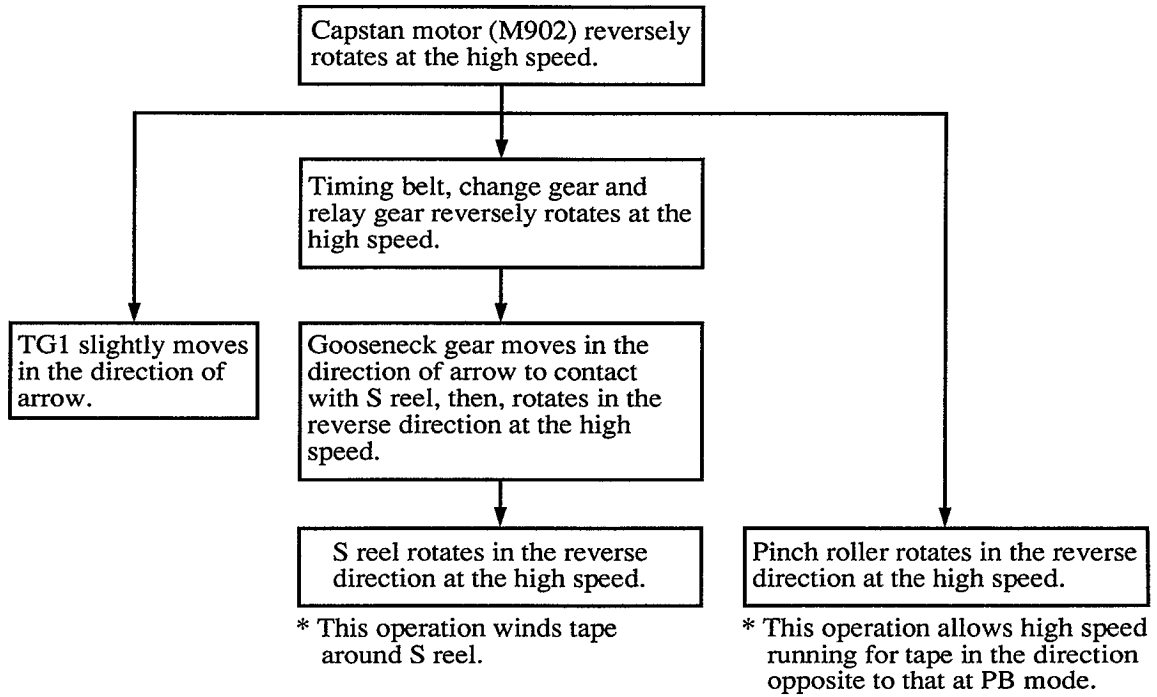


Fig. 4-14 Mechanism chassis and LS chassis assembly

4-7. PB \Rightarrow REVIEW



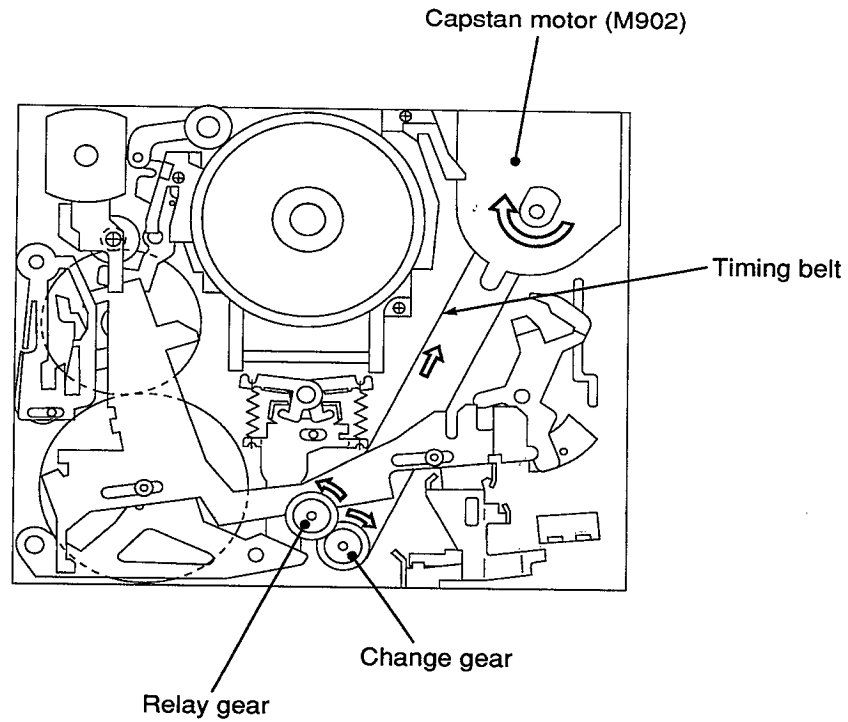


Fig. 4-15 Mechanism chassis assembly

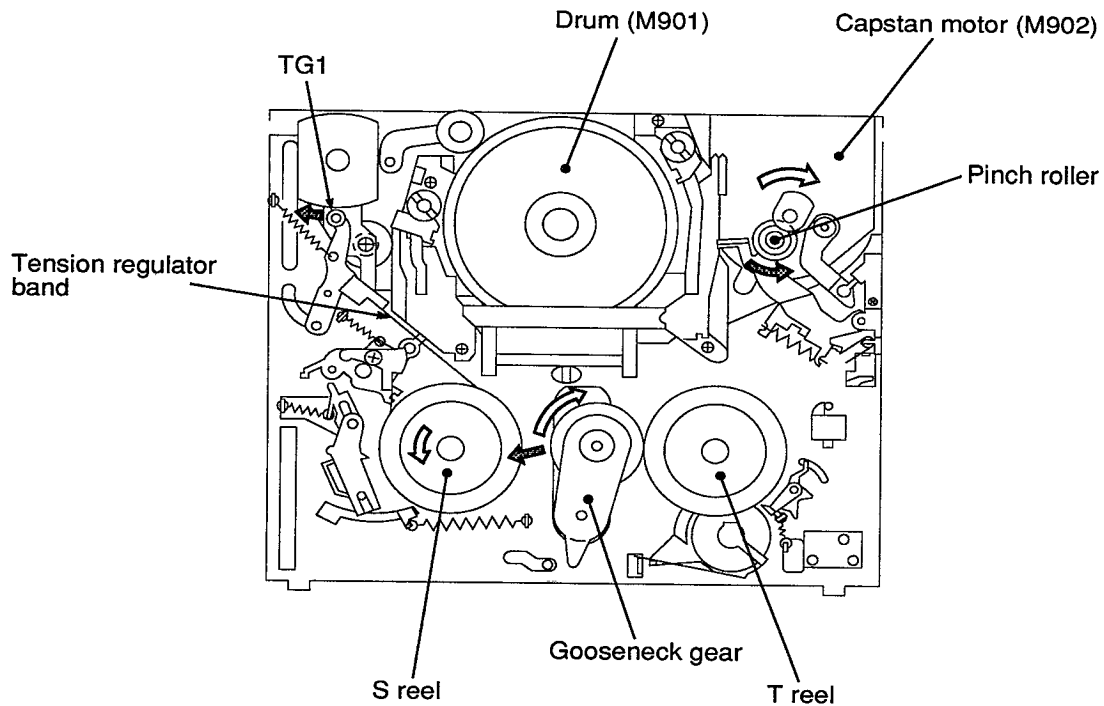
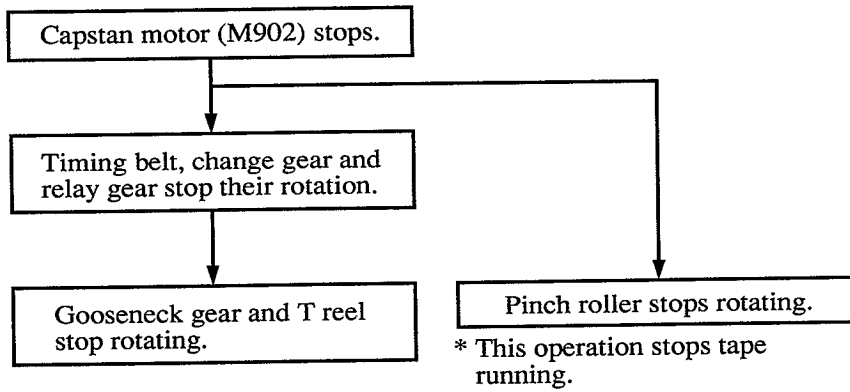


Fig. 4-16 Mechanism chassis and LS chassis assembly

4-8. PB \Longrightarrow PAUSE



NOTE : Drum continues rotating without stopping the rotation.

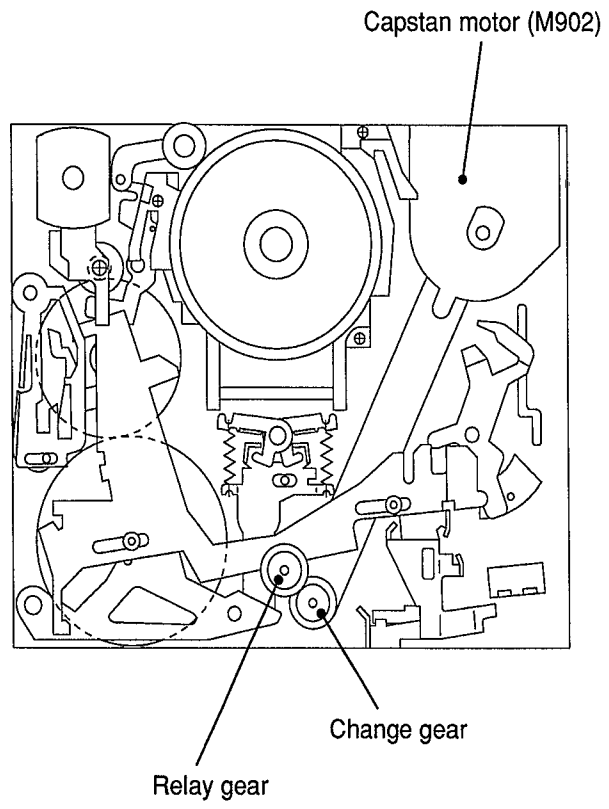


Fig. 4-17 Mechanism chassis assembly

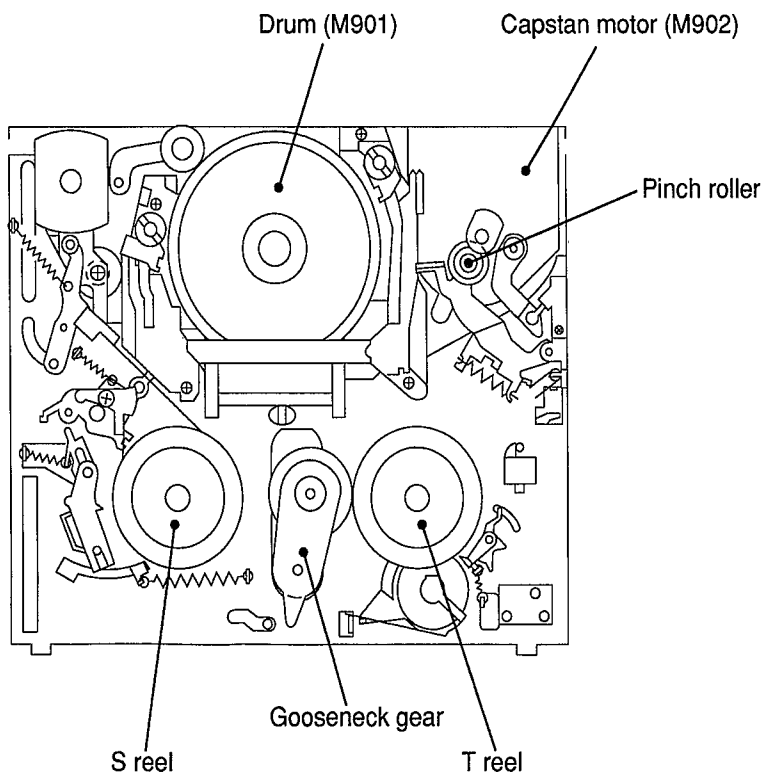


Fig. 4-18 Mechanism chassis and LS chassis assembly

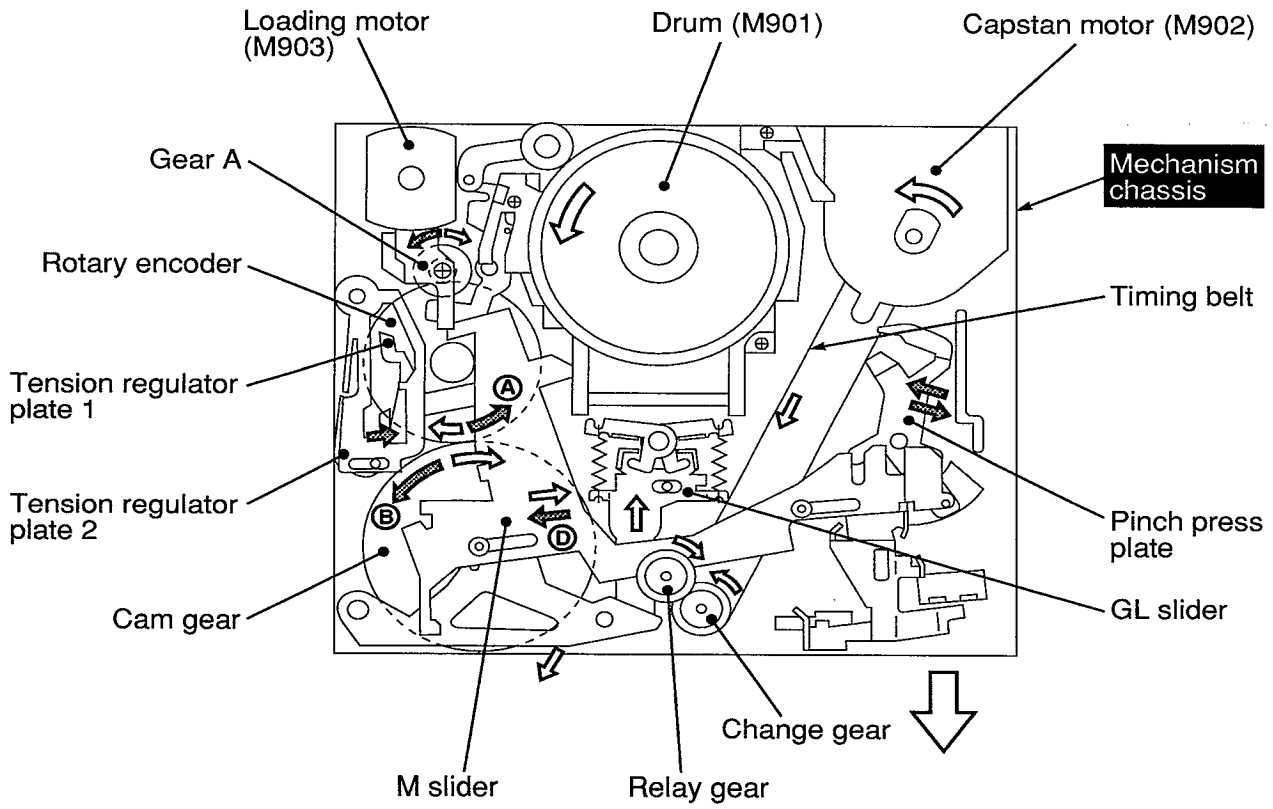


Fig. 4-19 Mechanism chassis assembly

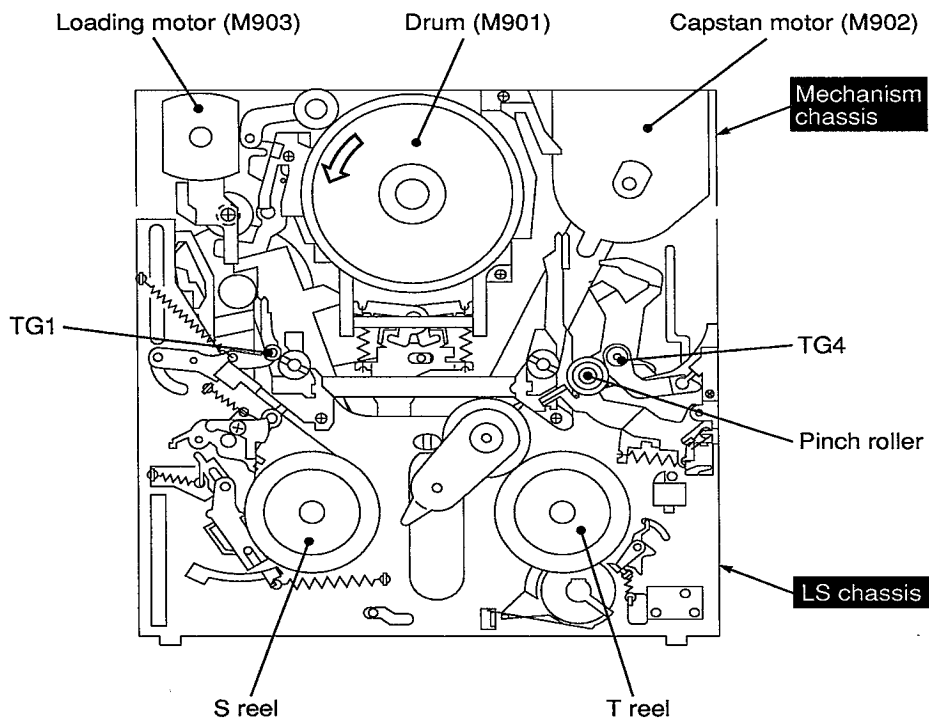
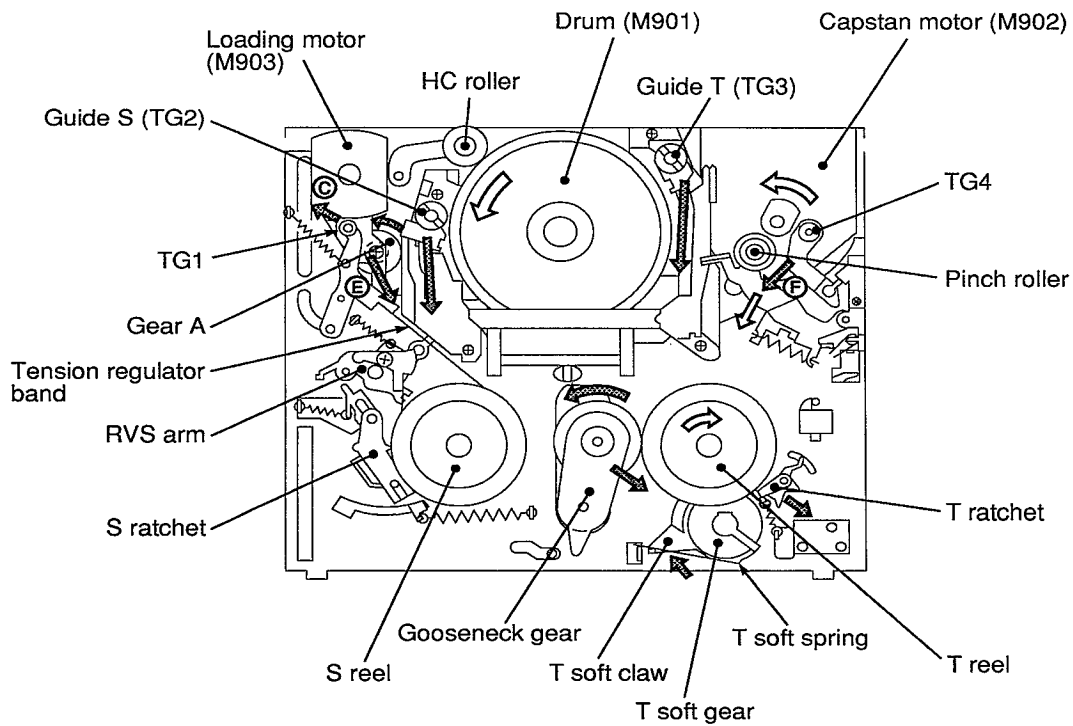


Fig 4-20 Mechanism chassis and LS chassis assembly

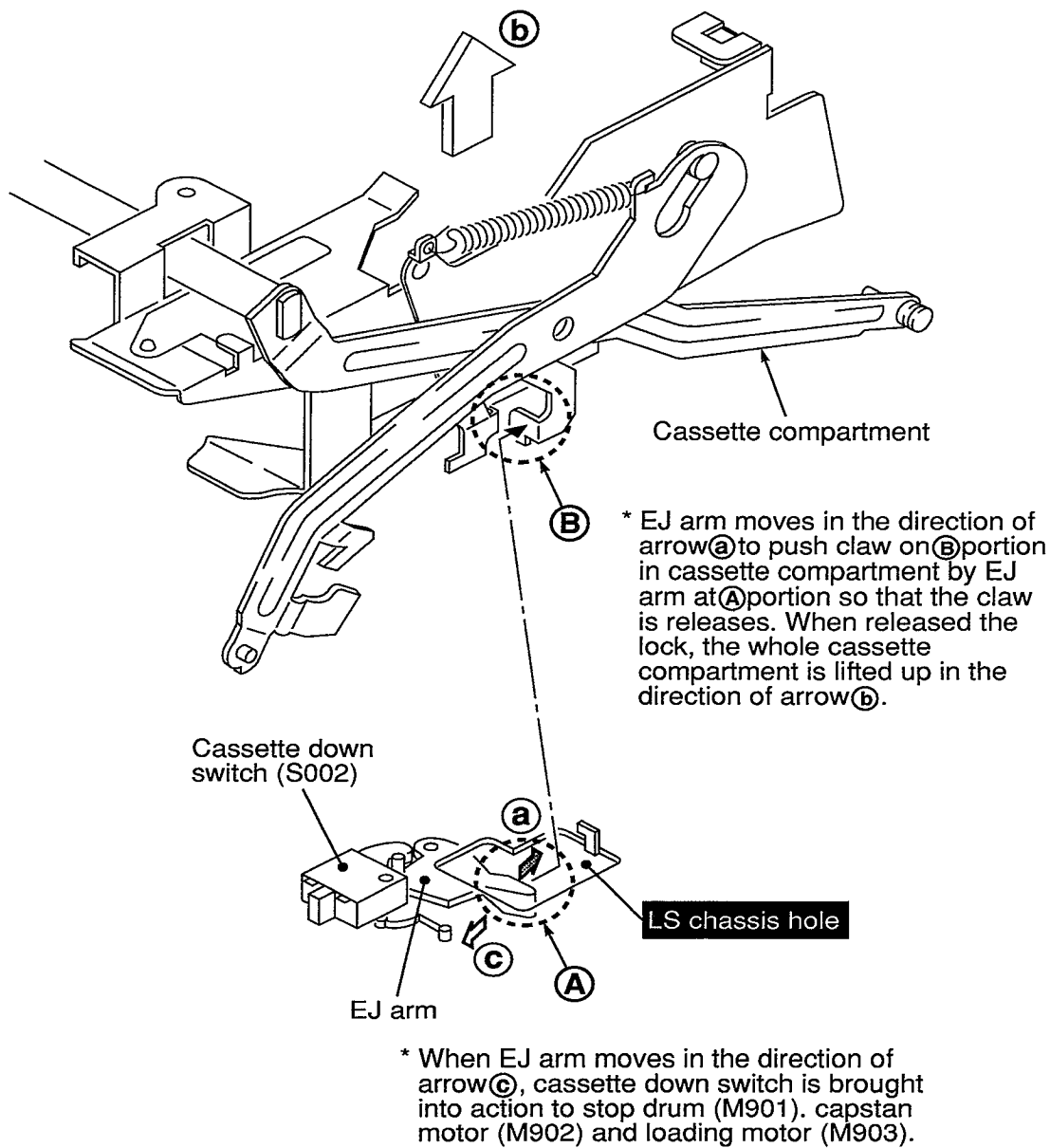


Fig. 4-21 Cassette compartment UP