



Bluetooth™ Headset
HBH-PV705

English
Language
Language
Language

Sony Ericsson

Bluetooth™ Headset HBH-PV705



2

User Guide

User Guide

User Guide

User Guide

FCC statement

This device complies with part 15 of the FCC rules. Operation is subject to the following two conditions: (1) This device may not cause harmful interference, and (2) This device must accept any interference received, including interference that may cause undesired operation.

Sony Ericsson HBH-PV705

This manual is published by Sony Ericsson Mobile Communications AB, without any warranty. Improvements and changes to this manual necessitated by typographical errors, inaccuracies of current information, or improvements to programs and/or equipment, may be made by Sony Ericsson Mobile Communications AB at any time and without notice. Such changes will, however, be incorporated into new editions of this manual. All rights reserved.

©Sony Ericsson Mobile Communications AB, 2006

Publication number: LZT 108 8620/3 PE1

Some of the services in this manual are not supported by all networks. This also applies to the GSM International Emergency Number 112. Contact your network operator or service provider if you are in doubt whether you can use a particular service or not.

The Bluetooth word mark and logos are owned by the Bluetooth SIG, Inc. and any use of such marks by Sony Ericsson is under license.

This product is leadfree and halogenfree.



Bluetooth™ headset HBH-PV705

The Bluetooth™ headset HBH-PV705 can be connected to any device with Bluetooth wireless technology that supports the handsfree or headset profile. This user guide focuses on usage with a Sony Ericsson mobile phone.

Bluetooth™ headset HBH-PV705

The Bluetooth™ headset HBH-PV705 can be connected to any device with Bluetooth wireless technology that supports the handsfree or headset profile. This user guide focuses on usage with a Sony Ericsson mobile phone.

Bluetooth™ headset HBH-PV705

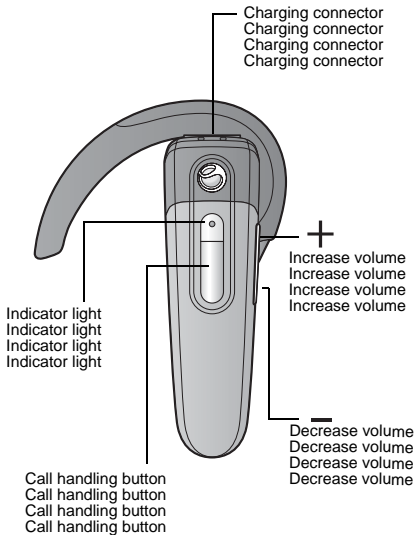
The Bluetooth™ headset HBH-PV705 can be connected to any device with Bluetooth wireless technology that supports the handsfree or headset profile. This user guide focuses on usage with a Sony Ericsson mobile phone.

Bluetooth™ headset HBH-PV705

The Bluetooth™ headset HBH-PV705 can be connected to any device with Bluetooth wireless technology that supports the handsfree or headset profile. This user guide focuses on usage with a Sony Ericsson mobile phone.

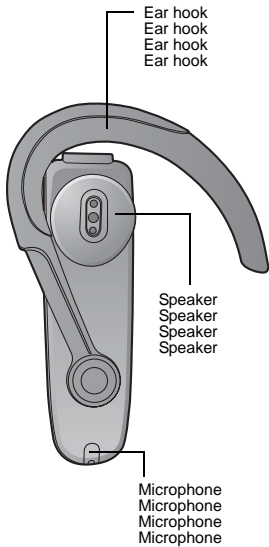
Front
Front
Front
Front

4



Back
Back
Back
Back

5



User guide symbols

User guide symbols

User guide symbols

User guide symbols



Green flash
Green flash
Green flash
Green flash



Red flash
Red flash
Red flash
Red flash



Steady green light
Steady green light
Steady green light
Steady green light



Steady red light
Steady red light
Steady red light
Steady red light



Ring signal
Ring signal
Ring signal
Ring signal



Beep tone
Beep tone
Beep tone
Beep tone



Press and release
Press and release
Press and release
Press and release



Press and hold
Press and hold
Press and hold
Press and hold



Press
simultaneously
Press
simultaneously
Press
simultaneously
Press
simultaneously



Press and hold
simultaneously
Press and hold
simultaneously
Press and hold
simultaneously
Press and hold
simultaneously

Getting started

Getting started

Getting started

Getting started

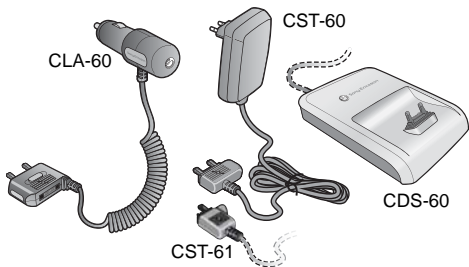
7

Compatible chargers

Compatible chargers

Compatible chargers

Compatible chargers



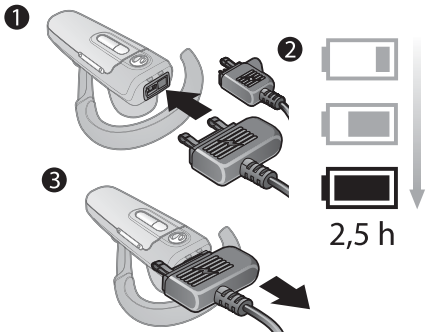
First time use: Charge approximately 8 hours.

First time use: Charge approximately 8 hours.

First time use: Charge approximately 8 hours.

First time use: Charge approximately 8 hours.

Charging
Charging
Charging
Charging



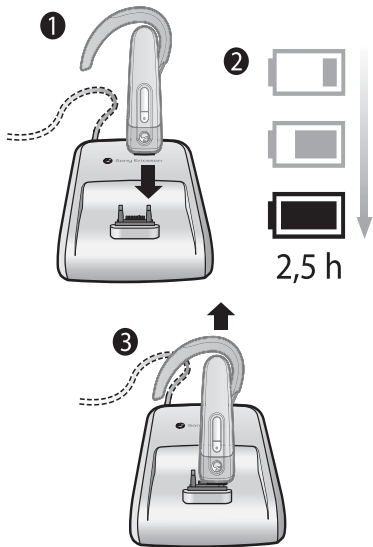
Charging
Charging
Charging
Charging



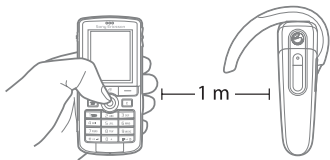
Fully charged
Fully charged
Fully charged
Fully charged



Battery needs charging
Battery needs charging
Battery needs charging
Battery needs charging



Adding the headset to the phone (pairing)
Adding the headset to the phone (pairing)
Adding the headset to the phone (pairing)
Adding the headset to the phone (pairing)

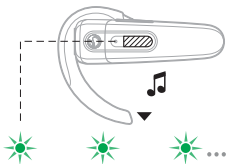


Before you can use your Bluetooth headset with your phone it has to be added once to the phone. Follow the instructions in the phone user guide on how to turn on Bluetooth in your phone.

1. Turn on Bluetooth in your phone.
2. Make sure Bluetooth visibility is on in your phone. This makes your phone visible to other Bluetooth devices.
3. Prepare your headset according to page 15.
4. Prepare your phone according to the phone user guide on how to add a Bluetooth device. Please note that for some phones you may need to enter a passcode. **The headset passcode is 0000.**

The headset beeps and the indicator light flashes green when successfully added.

11



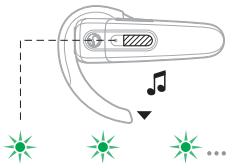
After you have added the headset to the phone, the headset automatically connects to the phone as soon as it is turned on and within range (for example when you receive or make calls).

Before you can use your Bluetooth headset with your phone it has to be added once to the phone. Follow the instructions in the phone user guide on how to turn on Bluetooth in your phone.

1. Turn on Bluetooth in your phone.
2. Make sure Bluetooth visibility is on in your phone. This makes your phone visible to other Bluetooth devices.
3. Prepare your headset according to page 15.
4. Prepare your phone according to the phone user guide on how to add a Bluetooth device. Please note that for some phones you may need to enter a passcode. **The headset passcode is 0000.**

The headset beeps and the indicator light flashes green when successfully added.

12



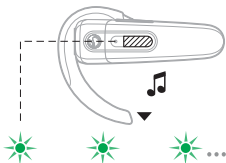
After you have added the headset to the phone, the headset automatically connects to the phone as soon as it is turned on and within range (for example when you receive or make calls).

Before you can use your Bluetooth headset with your phone it has to be added once to the phone. Follow the instructions in the phone user guide on how to turn on Bluetooth in your phone.

1. Turn on Bluetooth in your phone.
2. Make sure Bluetooth visibility is on in your phone. This makes your phone visible to other Bluetooth devices.
3. Prepare your headset according to page 15.
4. Prepare your phone according to the phone user guide on how to add a Bluetooth device. Please note that for some phones you may need to enter a passcode. **The headset passcode is 0000.**

The headset beeps and the indicator light flashes green when successfully added.

13



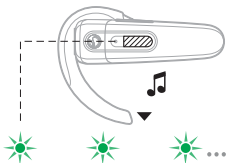
After you have added the headset to the phone, the headset automatically connects to the phone as soon as it is turned on and within range (for example when you receive or make calls).

Before you can use your Bluetooth headset with your phone it has to be added once to the phone. Follow the instructions in the phone user guide on how to turn on Bluetooth in your phone.

1. Turn on Bluetooth in your phone.
2. Make sure Bluetooth visibility is on in your phone. This makes your phone visible to other Bluetooth devices.
3. Prepare your headset according to page 15.
4. Prepare your phone according to the phone user guide on how to add a Bluetooth device. Please note that for some phones you may need to enter a passcode. **The headset passcode is 0000.**

The headset beeps and the indicator light flashes green when successfully added.

14



After you have added the headset to the phone, the headset automatically connects to the phone as soon as it is turned on and within range (for example when you receive or make calls).

Preparing the headset**Preparing the headset****Preparing the headset****Preparing the headset**

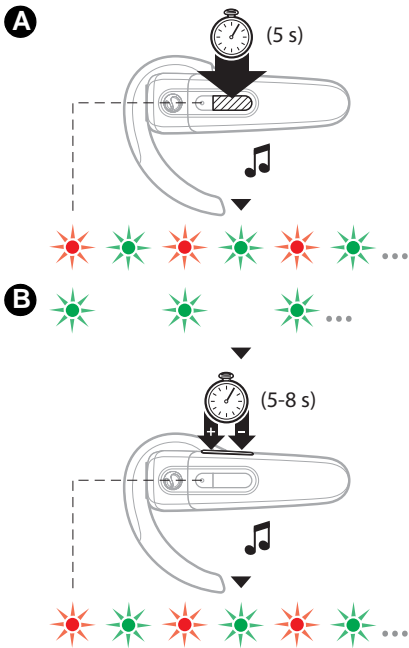
Make sure the headset is turned off (see page 17).

Make sure the headset is turned off (see page 17).

Make sure the headset is turned off (see page 17).

Make sure the headset is turned off (see page 17).

- **A:** Press and hold the call handling button and make sure the indicator light flashes red and green. **B:** If the headset only flashes green, press and hold the volume buttons until the indicator light flashes red and green.
- **A:** Press and hold the call handling button and make sure the indicator light flashes red and green. **B:** If the headset only flashes green, press and hold the volume buttons until the indicator light flashes red and green.
- **A:** Press and hold the call handling button and make sure the indicator light flashes red and green. **B:** If the headset only flashes green, press and hold the volume buttons until the indicator light flashes red and green.
- **A:** Press and hold the call handling button and make sure the indicator light flashes red and green. **B:** If the headset only flashes green, press and hold the volume buttons until the indicator light flashes red and green.



Turning the headset on (and off)

Turning the headset on (and off)

Turning the headset on (and off)

Turning the headset on (and off)

On

Off

On

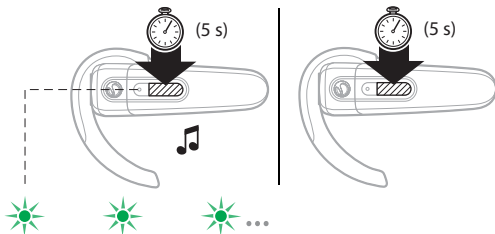
Off

On

Off

On

Off



Note: If the indicator light flashes red and green your headset is ready to be added to a phone (see page 10).

Note: If the indicator light flashes red and green your headset is ready to be added to a phone (see page 10).

Note: If the indicator light flashes red and green your headset is ready to be added to a phone (see page 10).

Note: If the indicator light flashes red and green your headset is ready to be added to a phone (see page 10).

www.sonyericsson.com



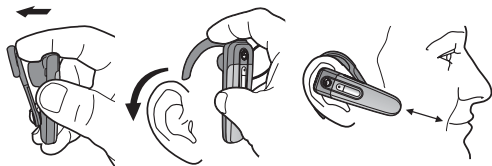
Sony Ericsson

Sony Ericsson Mobile Communications AB
SE-221 88 Lund, Sweden

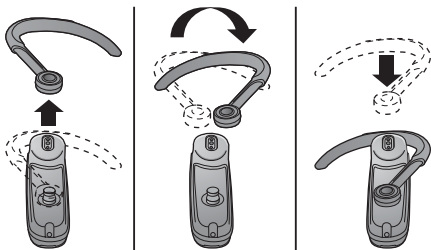
LZT 108 8620/3 PD1

Printed in **XXXX**

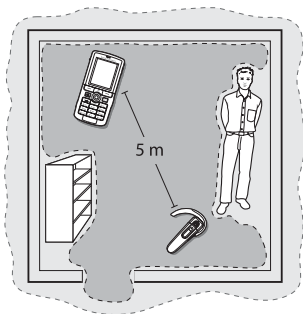
Putting the headset on
 Putting the headset on
 Putting the headset on
 Putting the headset on



Left-ear use
 Left-ear use
 Left-ear use
 Left-ear use



Calling
Calling
Calling
Calling
Range
Range
Range
Range



Optimal performance
Optimal performance
Optimal performance
Optimal performance



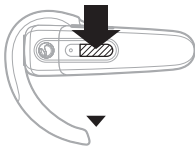
Limited performance
Limited performance
Limited performance
Limited performance

Making a call
Making a call
Making a call
Making a call

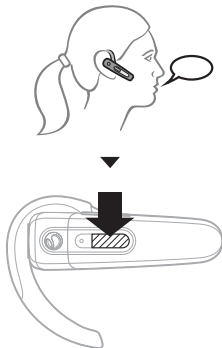
21



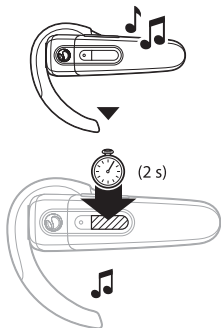
Answering a call
Answering a call
Answering a call
Answering a call



Ending a call
Ending a call
Ending a call
Ending a call



Rejecting a call
Rejecting a call
Rejecting a call
Rejecting a call



Using voice commands

Using voice commands

Using voice commands

Using voice commands

Voice commands, such as dial, redial, answer and reject, can be useful when using the headset. For more information on voice commands, and to know if your phone supports it, refer to the phone user guide.



Voice commands, such as dial, redial, answer and reject, can be useful when using the headset. For more information on voice commands, and to know if your phone supports it, refer to the phone user guide.

Voice commands, such as dial, redial, answer and reject, can be useful when using the headset. For more information on voice commands, and to know if your phone supports it, refer to the phone user guide.

Voice commands, such as dial, redial, answer and reject, can be useful when using the headset. For more information on voice commands, and to know if your phone supports it, refer to the phone user guide.

Making a call using voice commands

Making a call using voice commands

Making a call using voice commands

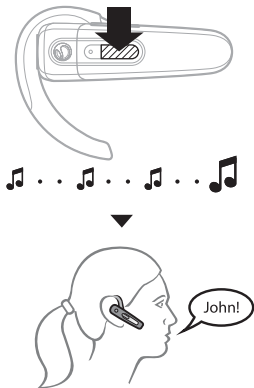
Making a call using voice commands

Make sure that voice commands are enabled and recorded in your phone before you start using them.

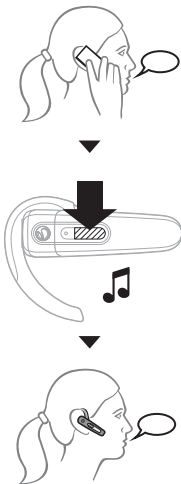
Make sure that voice commands are enabled and recorded in your phone before you start using them.

Make sure that voice commands are enabled and recorded in your phone before you start using them.

Make sure that voice commands are enabled and recorded in your phone before you start using them.



Transferring a call
Transferring a call
Transferring a call
Transferring a call



To transfer a call from headset to phone, refer to the phone user guide.

To transfer a call from headset to phone, refer to the phone user guide.

To transfer a call from headset to phone, refer to the phone user guide.

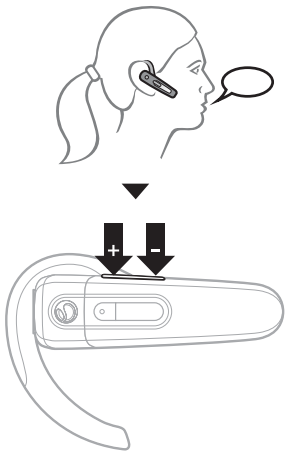
To transfer a call from headset to phone, refer to the phone user guide.

Turning the microphone off (and on) during a call

Turning the microphone off (and on) during a call

Turning the microphone off (and on) during a call

Turning the microphone off (and on) during a call

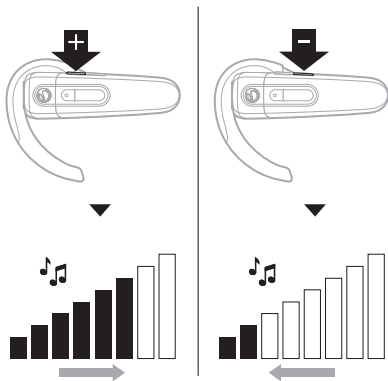


Adjusting ring volume (in standby mode)

Adjusting ring volume (in standby mode)

Adjusting ring volume (in standby mode)

Adjusting ring volume (in standby mode)

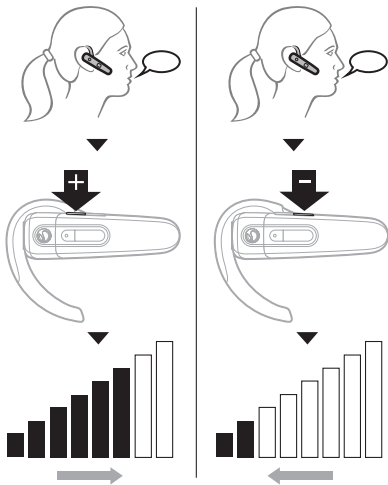


Adjusting speaker volume (during a call)

Adjusting speaker volume (during a call)

Adjusting speaker volume (during a call)

Adjusting speaker volume (during a call)



Warning! Loud volume could damage your hearing.

Warning! Loud volume could damage your hearing.

Warning! Loud volume could damage your hearing.

Warning! Loud volume could damage your hearing.

Master reset

Master reset

Master reset

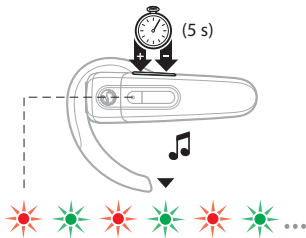
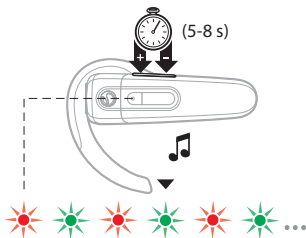
Master reset

Make sure the headset is turned on (see page 17).

Make sure the headset is turned on (see page 17).

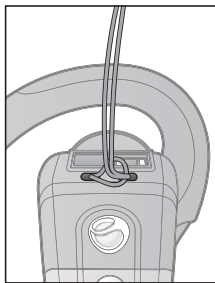
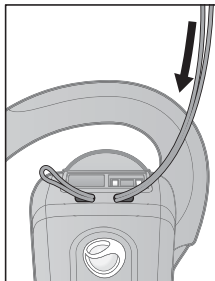
Make sure the headset is turned on (see page 17).

Make sure the headset is turned on (see page 17).



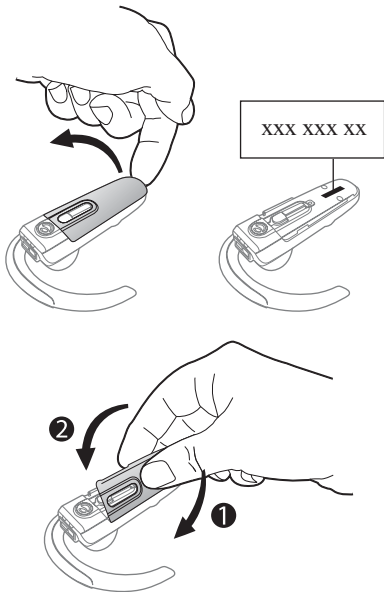
Attaching the strap
Attaching the strap
Attaching the strap
Attaching the strap

30



Viewing regulatory information
Viewing regulatory information
Viewing regulatory information
Viewing regulatory information

31



No connection between headset and phone

Make sure the headset is charged and within range of the phone (see page 8 and 20). Check or redo the Bluetooth settings in the phone. Try to pair the headset again.

For more information on Bluetooth and pairing, go to www.sonyericsson.com/learnabout

The headset is automatically switched off

- The battery is too low. Charge the headset (see page 8).
- The headset switches off if you do not add it to the phone within 10 minutes. Prepare the headset again (see page 15).

Unexpected behaviour

Do a master reset (see page 29). After a master reset the headset is reset to factory settings and the paired Bluetooth devices are removed from your phone.

Battery capacity

A battery that has been infrequently used or a new one, could have reduced capacity. It may need to be charged/discharged a number of times (see page 8).

No connection between headset and phone

Make sure the headset is charged and within range of the phone (see page 8 and 20). Check or redo the Bluetooth settings in the phone. Try to pair the headset again.

For more information on Bluetooth and pairing, go to www.sonyericsson.com/learnabout

The headset is automatically switched off

- The battery is too low. Charge the headset (see page 8).
- The headset switches off if you do not add it to the phone within 10 minutes. Prepare the headset again (see page 15).

Unexpected behaviour

Do a master reset (see page 29). After a master reset the headset is reset to factory settings and the paired Bluetooth devices are removed from your phone.

Battery capacity

A battery that has been infrequently used or a new one, could have reduced capacity. It may need to be charged/discharged a number of times (see page 8).

No connection between headset and phone

Make sure the headset is charged and within range of the phone (see page 8 and 20). Check or redo the Bluetooth settings in the phone. Try to pair the headset again.

For more information on Bluetooth and pairing, go to www.sonyericsson.com/learnabout

The headset is automatically switched off

- The battery is too low. Charge the headset (see page 8).
- The headset switches off if you do not add it to the phone within 10 minutes. Prepare the headset again (see page 15).

Unexpected behaviour

Do a master reset (see page 29). After a master reset the headset is reset to factory settings and the paired Bluetooth devices are removed from your phone.

Battery capacity

A battery that has been infrequently used or a new one, could have reduced capacity. It may need to be charged/discharged a number of times (see page 8).

No connection between headset and phone

Make sure the headset is charged and within range of the phone (see page 8 and 20). Check or redo the Bluetooth settings in the phone. Try to pair the headset again.

For more information on Bluetooth and pairing, go to www.sonyericsson.com/learnabout

The headset is automatically switched off

- The battery is too low. Charge the headset (see page 8).
- The headset switches off if you do not add it to the phone within 10 minutes. Prepare the headset again (see page 15).

Unexpected behaviour

Do a master reset (see page 29). After a master reset the headset is reset to factory settings and the paired Bluetooth devices are removed from your phone.

Battery capacity

A battery that has been infrequently used or a new one, could have reduced capacity. It may need to be charged/discharged a number of times (see page 8).

Declaration of conformity

36

We, **Sony Ericsson Mobile Communications AB** of

**Nya Vattentorget
221 88 Lund, Sweden**

declare under our sole responsibility that our product

Sony Ericsson type DDA-0002006

to which this declaration relates is in conformity with the appropriate standards EN 300 328, EN 301 489-17, EN 301 489-7 and EN 60950 following the provisions of Radio Equipment and Telecommunication Equipment directive **1999/5/EC** with requirements covering EMC directive **89/336/EEC** and Low Voltage directive **73/23/EEC**.

Lund, March 2006



CE 0682

Ulf Persson, Head of Product Business Unit Accessories

We fulfill the R&TTE Directive.

We fulfill the R&TTE Directive.

We fulfill the R&TTE Directive.

We fulfill the R&TTE Directive.