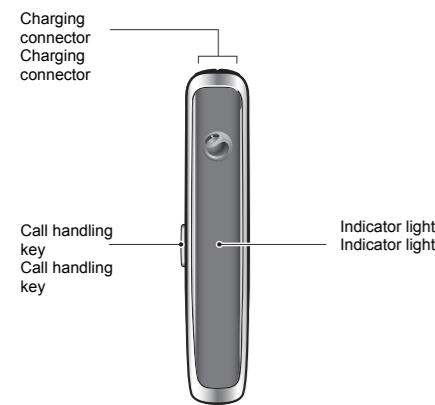


User guide

English
Language
Language
Language

HBH-PV770

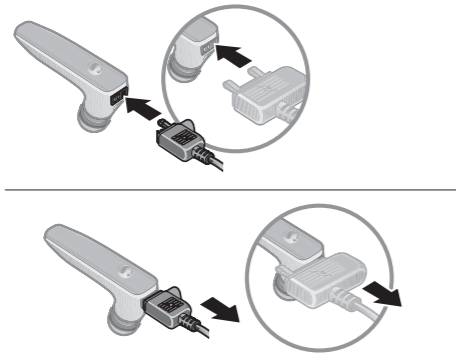
1 Front overview



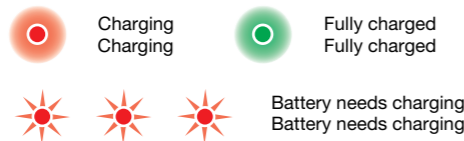
2 Back overview



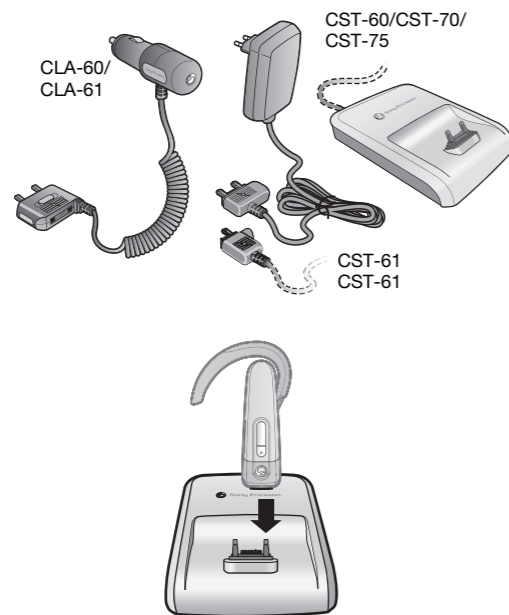
3 Charging



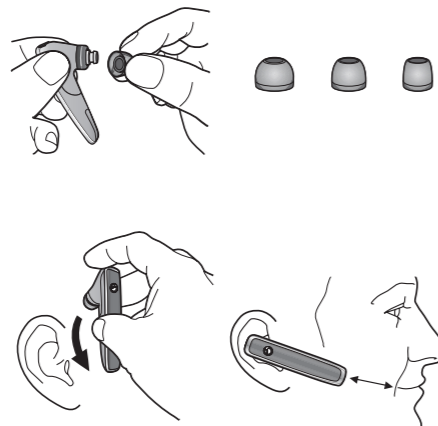
First time charging: about 8 hours
Normal charging: about 2 hours
First time charging: about 8 hours
Normal charging: about 2 hours



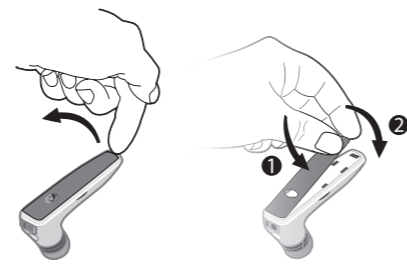
4 Compatible chargers



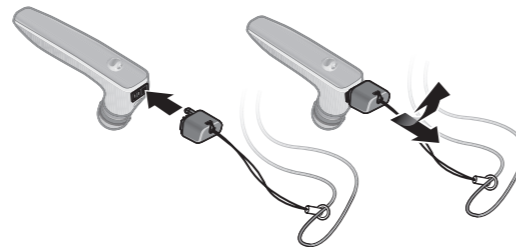
5 Putting on the headset



6 Viewing regulatory information



7 attaching the strap



FCC Statement

This device complies with part 15 of the FCC rules. Operation is subject to the following two conditions: (1) This device may not cause harmful interference, and (2) This device must accept any interference received, including interference that may cause undesired operation.

Declaration of conformity for HBH-PV770
We, Sony Ericsson Mobile Communications AB of Nya Vattentornet SE-221 88 Lund, Sweden declare under our sole responsibility that our product Sony Ericsson type DDA-0002011

to which this declaration relates is in conformity with the appropriate standards EN 300 328:V1.7.1, EN 301 489-7:V1.3.1, EN 301 489-17:V1.2.1 and EN 60950-1:2006 following the provisions of Radio Equipment and Telecommunication Equipment directive 1999/5/EC.

Lund, September 2007

Jacob Sten **CE 0682**

Jacob Sten, Head of Product Business Unit Accessories
We fulfil the R&TTE Directive.
We fulfil the R&TTE Directive.

English

The Bluetooth™ headset HBH-PV770 can be connected to any device with Bluetooth wireless technology that supports the handsfree or headset profile. This User guide focuses on usage with a Sony Ericsson mobile phone.

Charging the headset

Before you use the HBH-PV770 for the first time, charge it, for example, with the supplied charger or your phone charger, see figure 3. For compatible chargers, see fig. 4. To be fully charged, a new or an infrequently used battery needs to be charged and discharged a couple of times.

Pairing the headset

Before you can use your Bluetooth headset with your phone it has to be paired once with the phone. Follow the instructions from your phone User guide on how to turn on the Bluetooth function in the phone.

To pair the headset with your phone

1. Make sure the headset is turned off.
2. Turn on the Bluetooth function and Bluetooth visibility in your phone. (This makes the phone visible to other Bluetooth devices).
3. Place the phone within 20 cm (8 inches) from the headset.
4. Press and hold down the on/off key on the headset until the indicator light starts flashing red and green alternately (takes about 5 seconds).
5. If your phone supports auto pairing, press Yes when you are asked to add the headset to the phone, if not, see your phone User guide on how to pair a Bluetooth device. If required, the headset passcode is 0000.
6. The headset beeps and flashes green when successfully paired.

Note: When in pairing mode, the headset switches off if you do not pair it with the phone within 10 minutes.

After a successful pairing, the headset will automatically connect to the phone as soon as it is turned on and within range, provided that your phone has been set to route the audio to a Bluetooth headset.

Putting on the headset

See figure 5. Make sure you place the earpiece firmly in your ear. If you need to change the size of the earpiece, use any of the supplied plastic rings.

Warning! Loud volume could damage your hearing.

Turning on and off

To turn on the headset

- Press and hold down the on/off key until a beep is heard and the indicator light starts flashing green. (Takes about 2 seconds).

To turn off the headset

- Press and hold down the on/off key until a beep is heard and the indicator light is turned off. (Takes about 2 seconds).

Calling

When you have paired the headset with your phone, you can make and receive calls as long as the headset is turned on. For best performance:

- use the headset within a range of 5 metres (16.5 feet) of the phone
- avoid letting walls and solid objects to come between the phone and the headset
- wear the headset and the phone on the same side of your body.

To make a call

- Dial as you normally do. The call is automatically activated in the headset.

To end a call

- Press the call handling key briefly.

To answer a call

- Press the call handling key briefly.

To reject a call

- Press and hold down the call handling key until you hear a beep (takes about 2 seconds).

To redial the most recently used number

- Press the call handling key twice within a second.

Adjusting volume

To adjust the speaker volume

- See your phone User guide.

Calling using voice commands

Voice commands can be useful when you are using the headset and the phone is not close at hand. By creating voice commands you can, for example, call someone by saying their name.

To make a call using voice commands

- Press the call handling key briefly, wait for a beep and then say the voice command.

Note: Make sure that your phone supports Voice control, and that voice commands are enabled and recorded in your phone before you try to use them.

Transferring sound

To transfer the sound from the phone to the headset

- During a call, press the call handling key, or see the phone User guide if that does not work.

To transfer the sound from the headset to the phone

- See the phone User guide.

Resetting the headset

Reset the headset if it behaves unexpectedly.

To reset the headset

1. Enter pairing mode.
2. Simultaneously press and hold down the on/off key and the call handling key until the indicator light is turned off.
3. Pair the headset with the phone in the same way as you paired it the first time.

Battery

When the battery needs charging, the indicator light flashes red and a low beep can be heard. If you do not charge the headset, it automatically turns off.

To check the battery status

Press the power key once briefly:

- one green flash – the battery needs charging
- two green flashes – the battery is medium full
- three green flashes – the battery is fully charged

Viewing regulatory information

To view the regulatory information, see figure 6.

Attaching the strap

To attach the strap, see figure 7.

Troubleshooting

No connection between headset and phone
Make sure the headset is charged and within range of the phone. Check or re-make the Bluetooth settings in the phone. Try to pair the headset again.

The headset is automatically turned off

- The battery level is too low. The indicator light on the headset flashes red and a low beep can be heard.
- When the headset is in pairing mode it will automatically switch off if you do not add it to the phone within 10 minutes.

Unexpected behaviour

1. Connect the charger.
2. Disconnect the charger.
3. Reset the headset.

Redial does not work

If the call list in the phone is empty you cannot use the redial function.

Voice commands

Make sure that voice commands are enabled and recorded in your phone before you start using them.

Language 2