



DPF-D1010/D810/D710

Checking included items

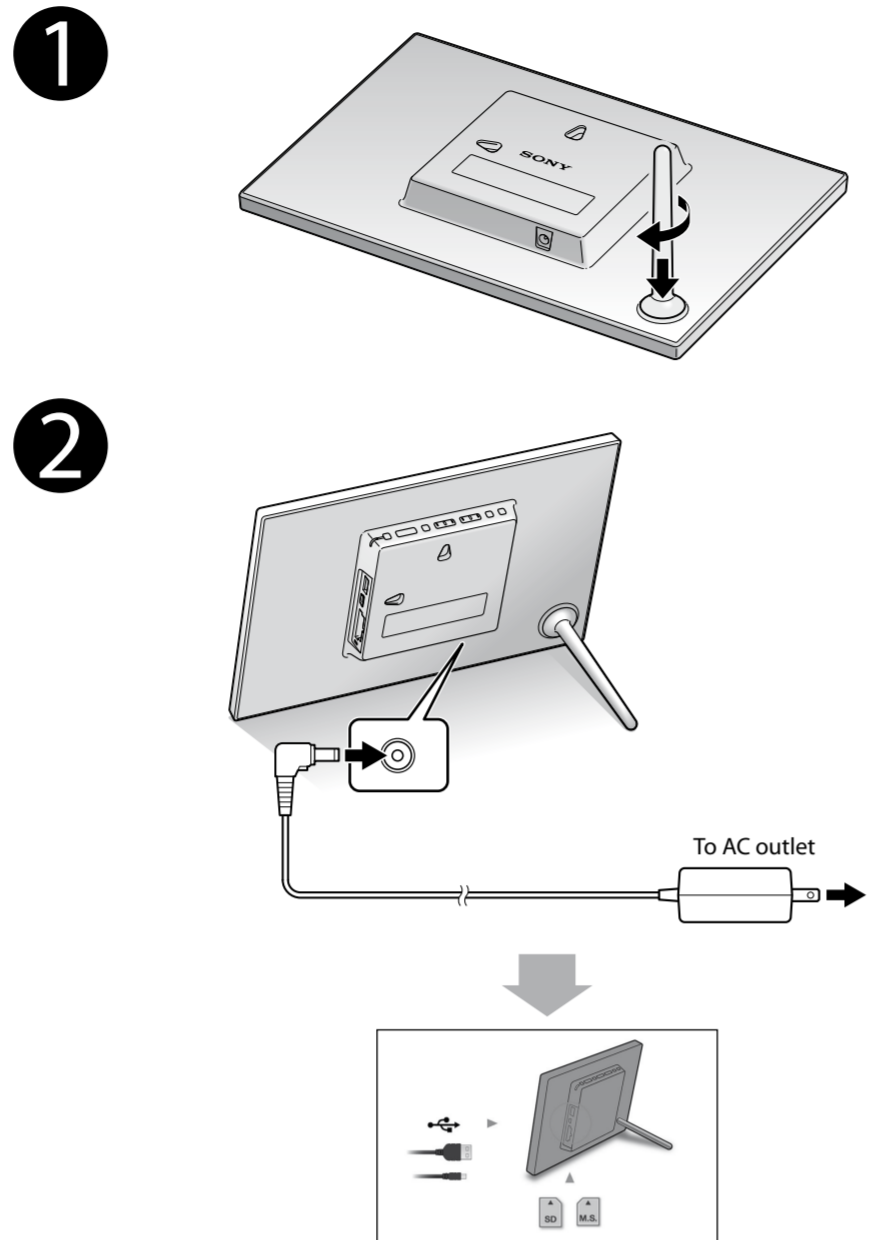
- Digital photo frame (1)
- Remote control (1)
- Stand (1)
- AC adaptor (1)
- Quick Start Guide (this manual)
- Operating Instructions (1)
- CD-ROM (Digital Photo Frame Handbook) (1)
- Warranty (1)

(In some regions, the warranty is not supplied.)

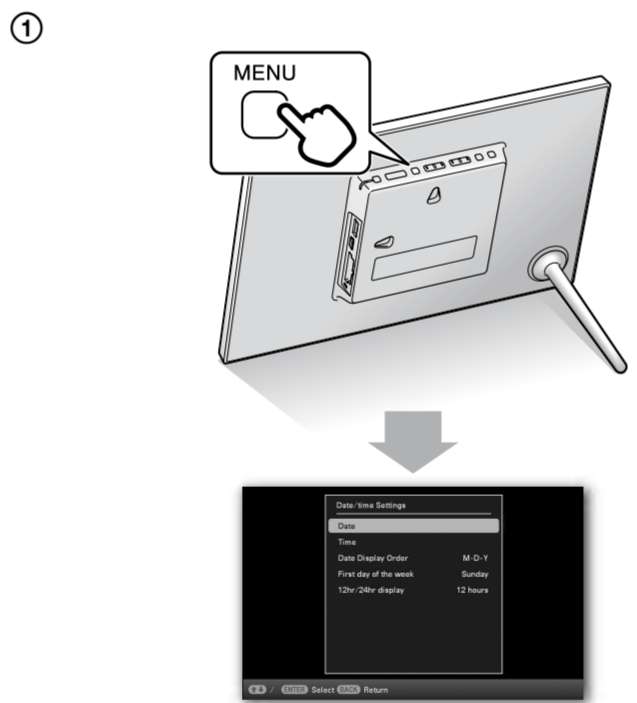
On descriptions in this manual

- The illustrations and screen shots used in this manual may not be identical to what is seen in actual use.
- Not all models of the digital photo frame are available in all countries and regions.

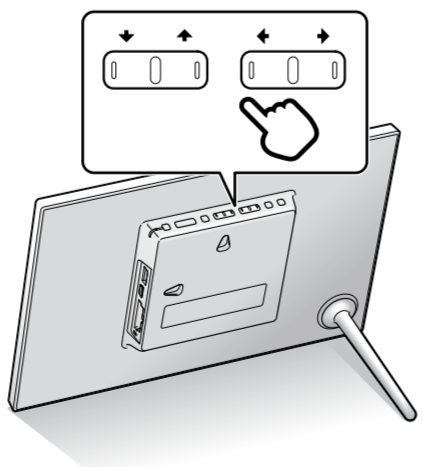
Getting started



3 For the first-time use



2 Select [Language Setting] to select the menu language, and then [Date/time Settings] to set [Date] and [Time], following the on-screen instructions.

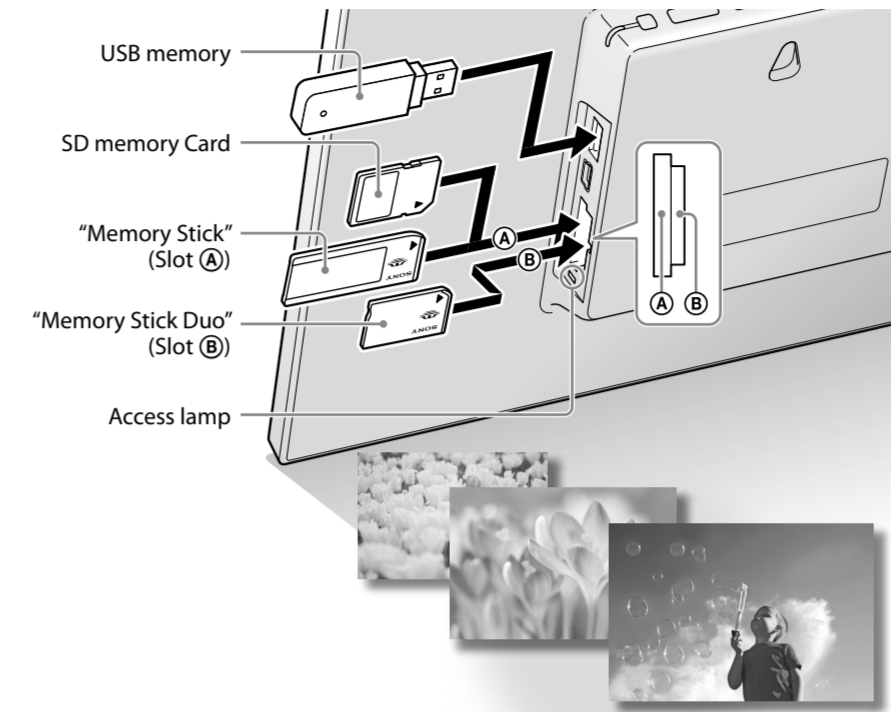


Do not use the AC adaptor placed in a narrow space, such as between a wall and furniture.

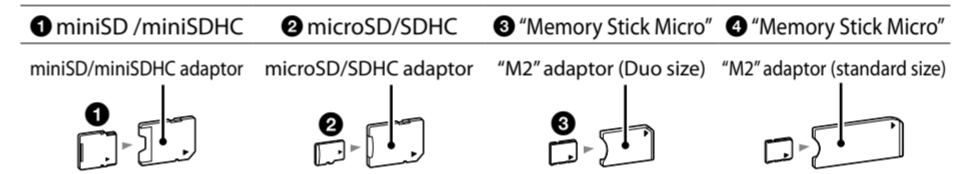
Enjoying your photo frame

Viewing a slideshow

Insert a memory card or a USB memory.



Insert any of the following types memory cards in an appropriate adaptor

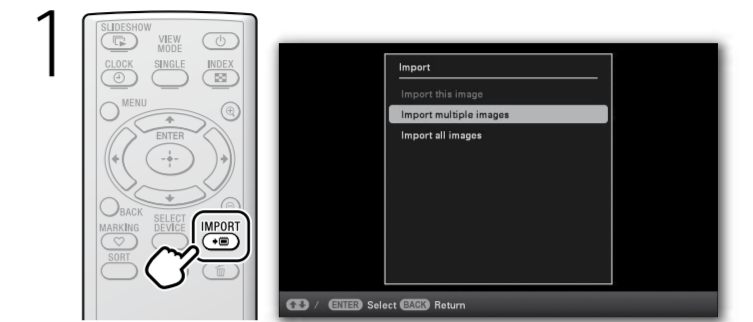


Changing the view mode



Saving still images in your photo frame (Import)

When displaying the still image on the screen



2 Select the still image(s) you want to save, following the on-screen instructions.



3 Select the folder, and save the still images.

Compatible image file formats*1

JPEG	DCF 2.0, Exif 2.21, JFIF*2
TIFF	Exif 2.21 compatible
BMP	1, 4, 8, 16, 24, 32 bit Windows format
RAW*3	SRF, SR2, ARW 2.2 (preview only)

*1: Some of the files may not be compatible depending on the type of data.
 *2: Baseline JPEG with 4:4:4, 4:2:2, or 4:2:0 format
 *3: RAW files of a Sony camera are displayed as thumbnail preview.

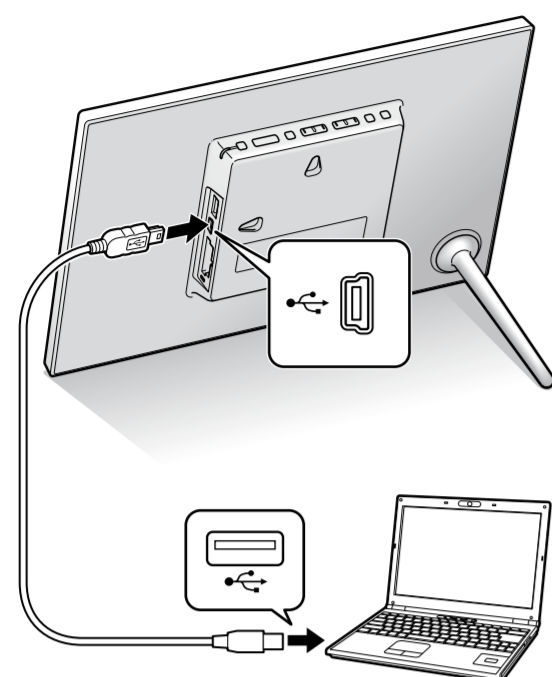
Specifying the playback source



2 Select the desired playback source.

Copying images from a computer

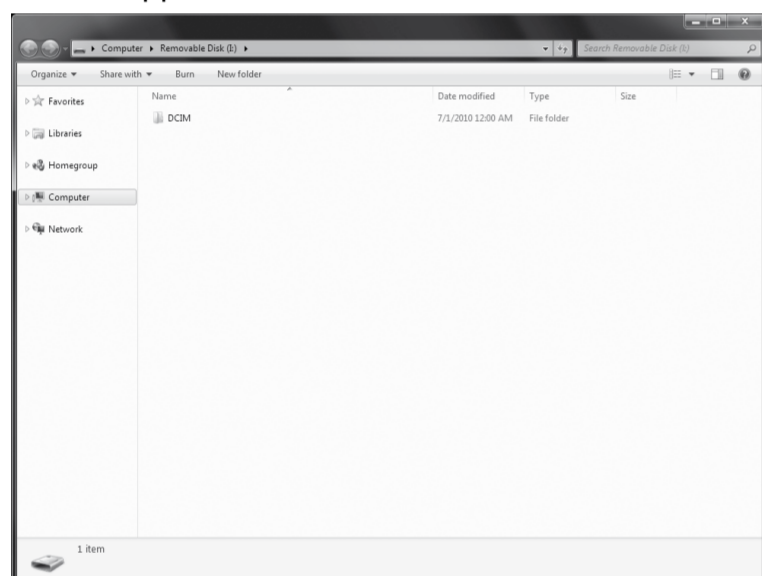
1



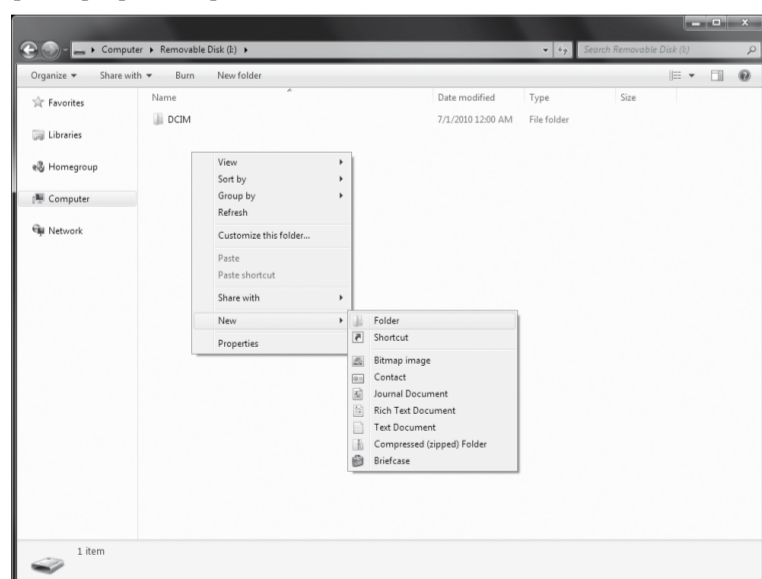
2 Operate the computer to exchange images.

e.g. For Microsoft Windows 7

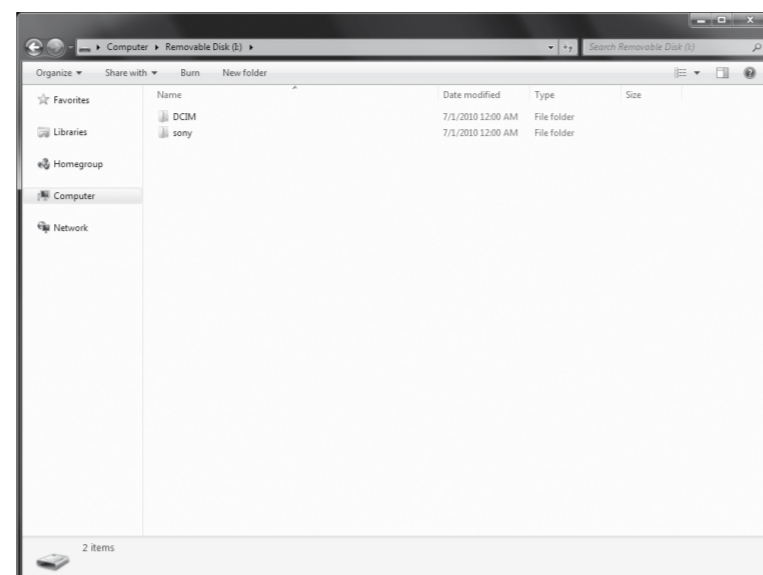
1 Click on [Open folder to view files] when the [AutoPlay] window appears.



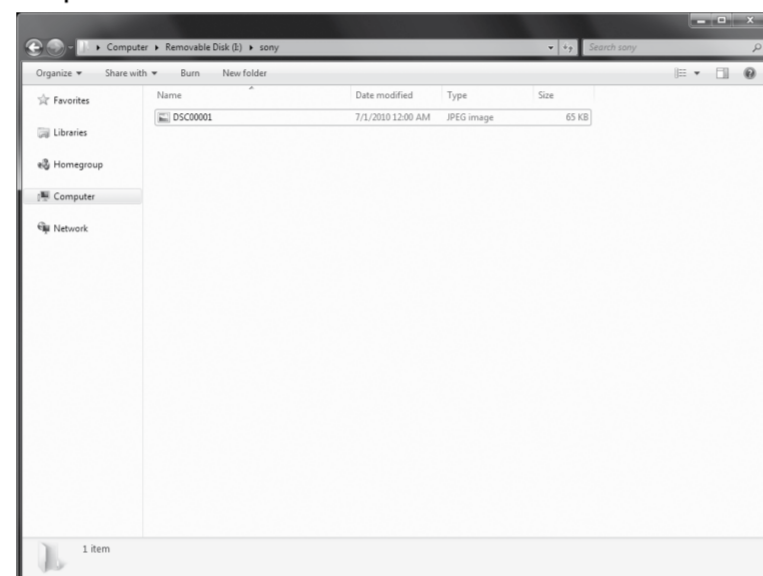
2 Move the cursor in this window and right-click, then click on [New]→[Folder].



Name this new folder. In this manual, the folder name "sony" is used as an example.

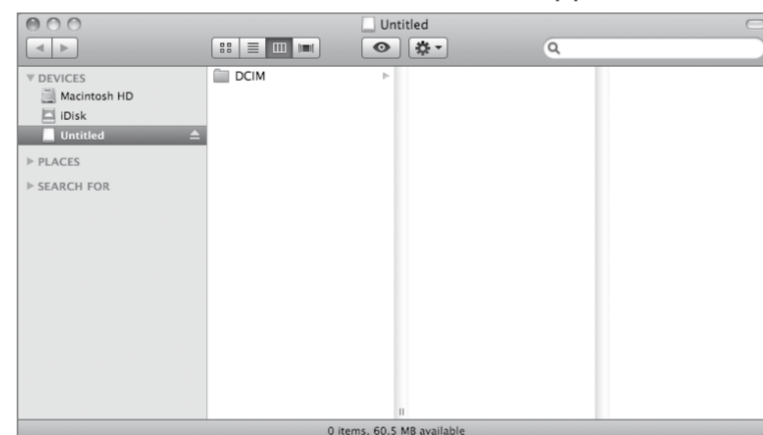


3 Open the folder that contains the image files you want to copy, and copy the image files to the new folder by using drag and drop.

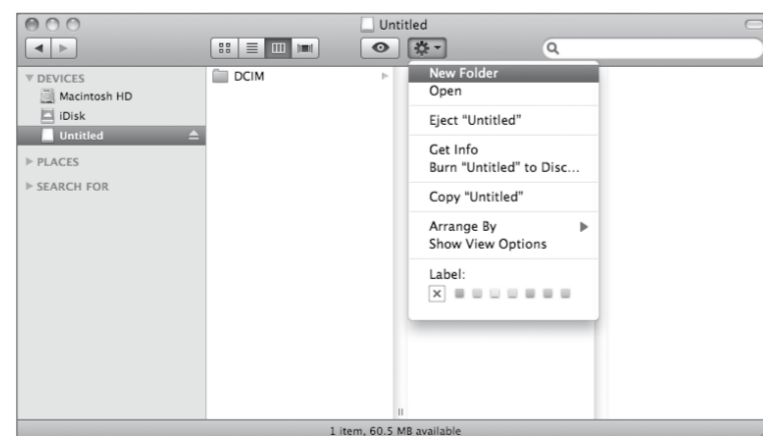


e.g. For Mac OS X

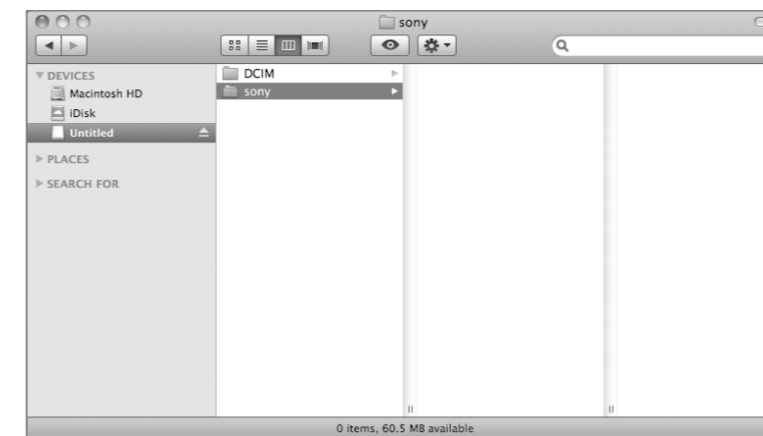
1 Double-click on [Untitled] icon when it appears on the screen.



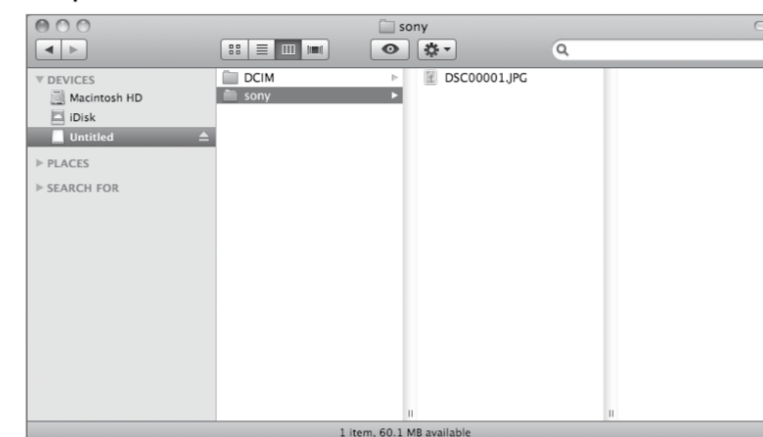
2 Move the cursor in this window, then select [New Folder].



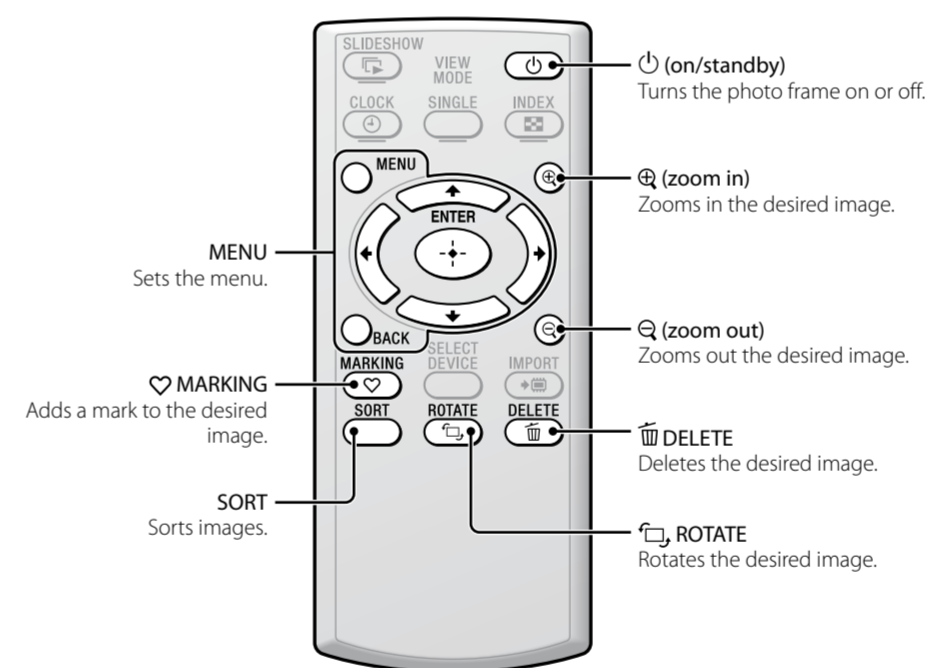
Name this new folder. In this manual, the folder name "sony" is used as an example.



3 Open the folder that contains the image files you want to copy, and copy the image files to the new folder by using drag and drop.



More available functions



Auto image rotation (portrait/landscape) to follow orientation of the photo frame



Learning more about your photo frame

You can refer to the Digital Photo Frame Handbook stored on the supplied CD-ROM.

What should I do if the photo frame is not turned on?

- Make sure the AC power cord is inserted securely.

Why doesn't my photo frame display images?

- A memory card is not inserted properly.
- The image file is not compatible with DCF format or is not supported by the photo frame.
- The image file may be damaged.
- The photo frame can display up to 4,999 image files.

What should I do if nothing happens when I operate the photo frame?

- Turn the photo frame off then back on again.

Why doesn't my photo frame import a desired file?

- Avoid doing the following while an image is being imported to internal memory. (Doing so may damage the photo frame, memory card, or data.)
 - Turning off the power
 - Removing a memory card
 - Inserting another memory card

Customer support home page

The latest support information is available at the following home page address:
<http://www.sony.net/>