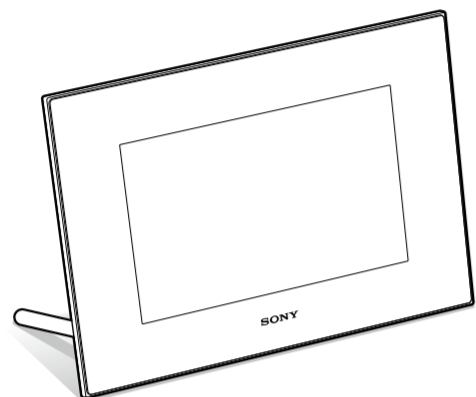


Digital Photo Frame

Read This First

Welcome to the Sony DPF-D82/D92 Digital Photo Frame.

This leaflet explains preparations and basic viewing procedures. To enjoy a variety of viewing options or customize your photo frame, please read the operating instructions also supplied.



S-Frame

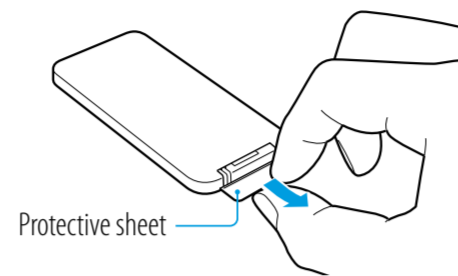
© 2009 Sony Corporation printed in China

4-129-233-11(1)
P/N752500015A

1 Preparing the remote control.

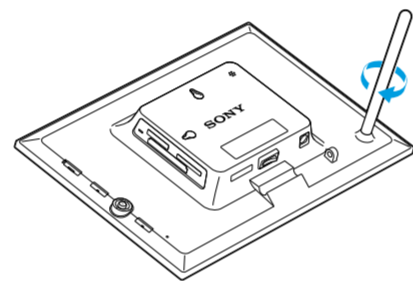
The supplied lithium battery (CR2025) has already been inserted into the remote control.

Pull out the protective sheet before use as shown in the figure.



2 Preparing the photo frame.

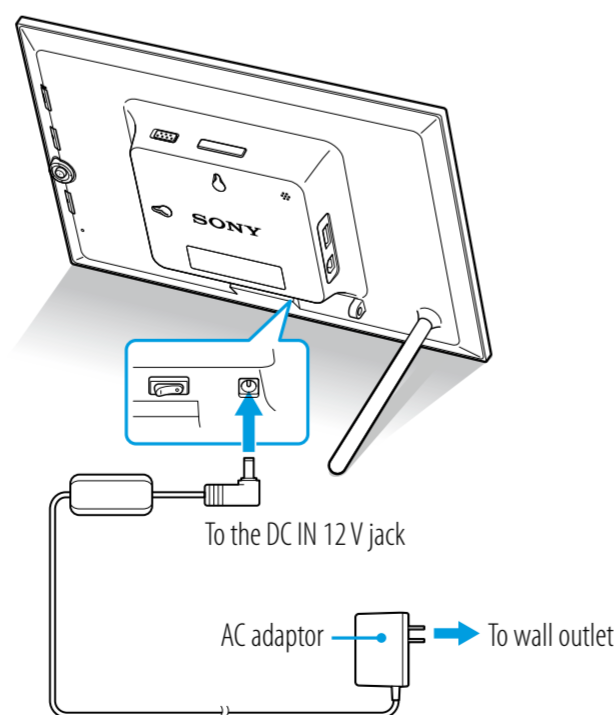
Screw the stand supplied with the photo frame into the screw hole firmly until the stand stops turning (when you use the photo frame as a photo stand).



3 Connecting to the AC power source.

1 Insert the plug of the AC adaptor into the DC IN 12 V jack on the rear of the photo frame.

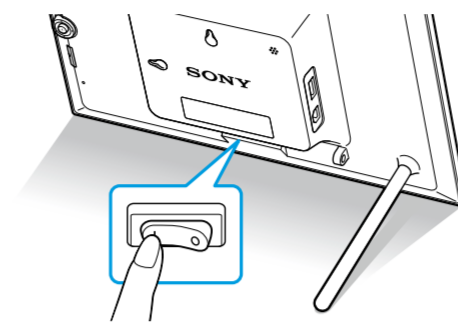
2 Connect the AC adaptor to the wall outlet.



4 Turn the photo frame on.

1 Set to the POWER switch to ON.

The standby indicator turns green and the Sony logo on the front panel lights up.

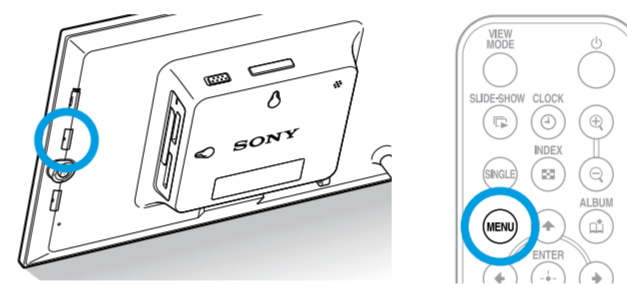


Tips

- Keep the POWER set to ON, when you use the alarm function or the auto power on/off function.
- The value of the following settings are returned to their factory settings if you turn the photo frame to OFF, and leave it off for a long time.
 - the setting value of [Date/time settings]
 - the setting time of the alarm function and the auto power on/off function

5 Set the current time.

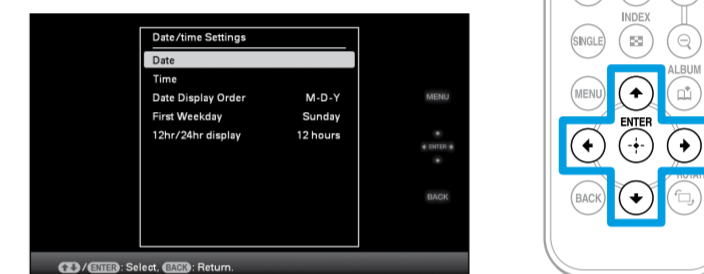
1 Press MENU.



2 Press ←/→ to select the (Settings) tab.

3 Press ▲/▼ to select [Date/time settings] and then press .

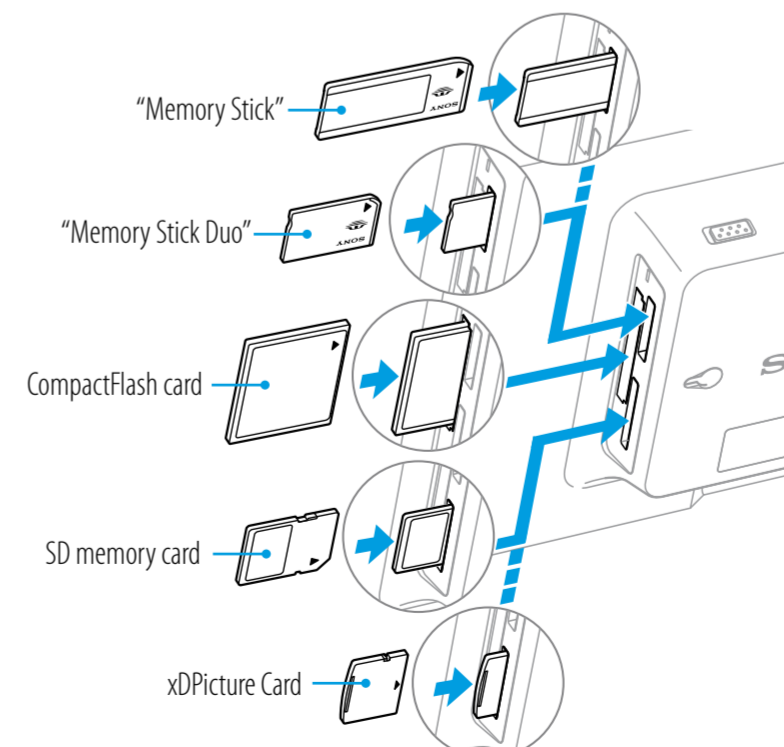
4 Set the current time following the guidance on the screen.



6 Insert a memory card into the slot.

1 Insert a memory card firmly into the corresponding slot.

The access lamp flashes when the memory card is inserted correctly. Reinsert the memory card after checking the label side of the memory card if the access lamp does not flash. The status of each memory card is as follows.



Note

All memory cards have a back-side and front-side, and an insertion direction. Refer to the following illustration and insert the memory card while you take note of its shape and the appropriate slot. It may cause malfunction if you insert the card in the wrong direction.

2 The slideshow of the memory card you inserted starts automatically.

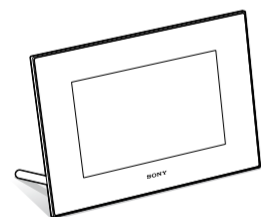
You can enjoy a variety of slideshow styles. (⇌)



Checking the contents of the package

(The illustrations are of the DPF-D92. The locations and names of buttons and connectors of the DPF-D82 are identical to those of the DPF-D92, although the LCD screen size and shape is different.)

Digital photo frame (1)



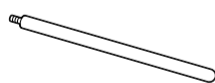
AC adaptor (1)



Operating Instructions (1)



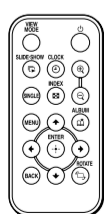
Stand (1)



Read This First (this manual) (1)



Remote control (1)



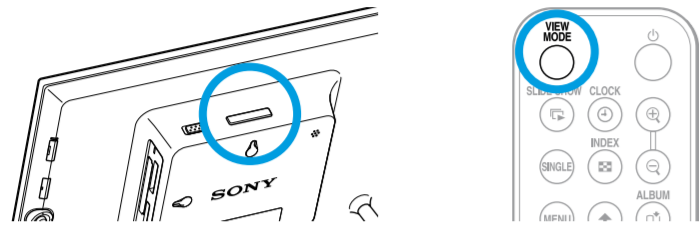
Warranty (1)

(In some regions, the warranty is not supplied.)

Let's use various functions

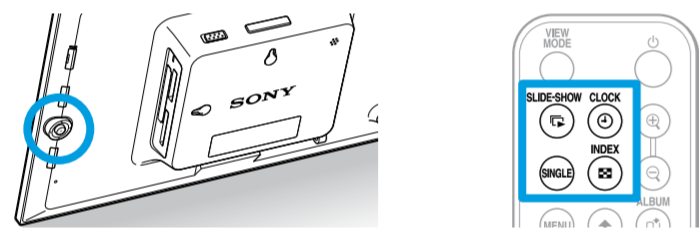
1 Press VIEW MODE.

The view mode screen is displayed.



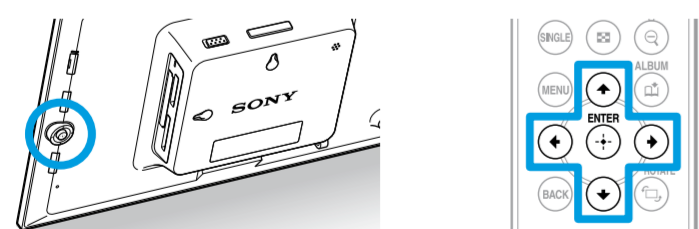
2 Select the group you want.

Press (Clock and calendar), (Slideshow), (Index), or (Single) on the remote. Or press / / / to move the cursor to group area and then press / on the photo frame to select the group you want.



3 Select the style you want.

Press / / / to select the style you want, the press .



Tip

The image illustration is the view mode screen of the slideshow. Clock and calendar, index, and single has each view mode screen.

The displaying screen

Refer to "Changing the display" on the operating instruction.

Clock and Calendar display



Note

You cannot perform the setting operation of the menu when you display the clock and calendar display.

Slideshow



Tips

- You can set the playback order in [Listing Order] on [General Settings].
- Refer to the "Changing the settings" in the operating instructions.
- When you select [Time Machine] in a slideshow mode, the day when the image is shot or the day the file was updated is displayed.

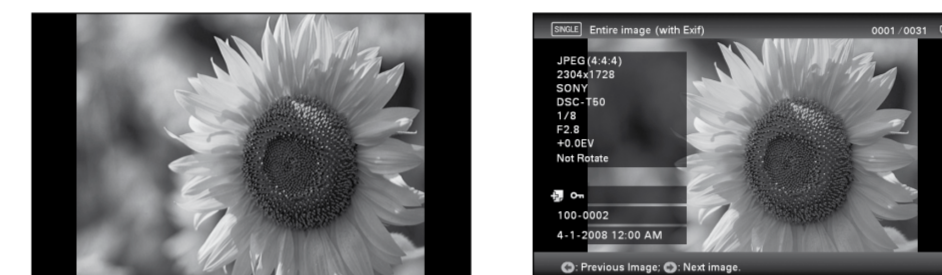
Index image display



Tip

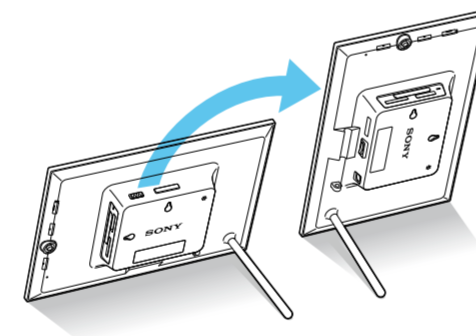
The listing order of the images is same as the one you selected in [Listing Order] on [General Settings].

Single view mode

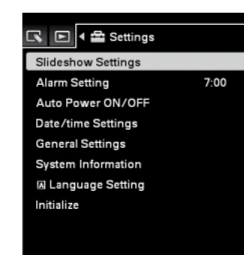


About the display orientation

You can set the photo frame to portrait or landscape orientation by rotating it without moving the stand. You can also use this function when you display the photo frame on the wall.



- Press MENU.
- Press / to select the (Settings) tab.



- Press / to select [ON] in [Auto display orientation], the press .

Notes

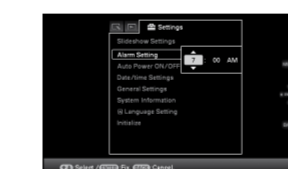
- Check whether the stand is stable. If the stand is not set properly, the photo frame may fall over.
- Store the stand in the storage slot when you display the photo frame on the wall.
- When the photo frame is rotated to the portrait orientation, the Sony logo doesn't light up.
- The photo frame does not detect and rotate the orientation of images when [Auto display orientation] on the (Settings) tab is set to [OFF].

Various functions



Adding image to the internal memory

Refer to "Adding image to the internal memory" in the operating instructions.



Setting the alarm

Refer to "Using the alarm function" in the operating instructions.



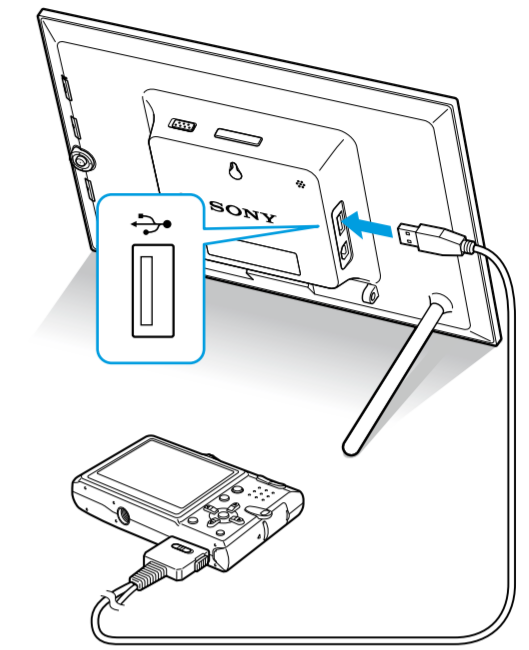
Auto power on/off

Refer to "Changing the settings of the auto power on/off function" in the operating instructions.

Enjoying the photo frame with other device

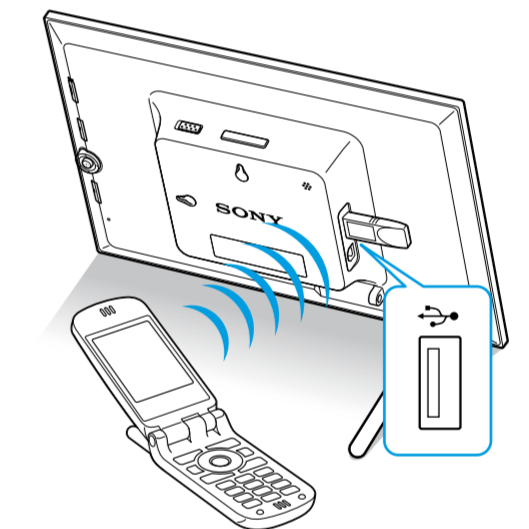
Transmitting the image from external device

Refer to "Operating an external device connected to the photo frame" in the operating instructions.



Using the photo frame with a Bluetooth device

Refer to "Connecting to a Bluetooth device" in the operating instructions.



Connecting to a computer

Refer to "Connecting to a computer" in the operating instructions.

