

Main specifications of DSC-RX1RM2

Image Sensor	
Sensor Type	35mm full frame (35.9 x 24.0mm), Exmor R CMOS sensor, aspect ratio 3:2
Number of Gross Pixels	Approx. 43.6 megapixels
Number of Effective Pixels	Approx. 42.4 megapixels
Lens	
Lens Type	ZEISS® Sonnar T*, 8 elements in 7 groups (3 aspherical elements including AA lens)
Max. Magnification Standard/Macro	0.15x / 0.26x (By Macro Switching Ring)
F-number (maximum aperture)	F2
Aperture Type	Iris diaphragm (9 blades)
	f=35mm
Focal Length (f=)	[Still image 3:2] f=35mm [Still image 16:9] f=37mm [Still image 1:1] f=44mm [Still image 4:3] f=38mm [Movie 16:9] f=44mm (SteadyShot On), f=37mm (SteadyShot Off)
Focus Range (from the front of the lens)	Approx. 24cm to infinity (Normal mode), approx. 14cm to 29cm (Macro mode)
Focus Range (from the focal plane)	Approx. 30cm to infinity (Normal mode), approx. 20cm to 35cm (Macro mode)
Optical Variable Low-Pass Filter	Yes
Clear Image Zoom	Still Image 2x Movie 2x
Digital Zoom	Still Image 42M approx. 4x / 18M approx. 6.2x / 11M approx. 8x Movie Approx. 4x
Filter Diameter	49mm
Screen	
Screen Type	7.5cm (3.0 type) (4:3) / 1,228,800 dots / Xtra Fine / TFT LCD
Brightness Control	Auto / Manual (5 steps) / Sunny Weather mode
Adjustable Angle	Up approx. 109 degrees, down approx. 41 degrees, at max.
Display Selector (Finder/LCD)	Auto / EVF / Monitor
MF Assist Magnification	5.0x,12.5x
Viewfinder	
Screen Type/Number of Dots	0.39-type electronic viewfinder (OLED), 2,359,296 dots
Brightness Control	Auto, Manual (5 steps)
Field Coverage	100%
Magnification	Approx. 0.74x (with 50mm lens equiv. at infinity, -1m ⁻¹)
Eye Point	Approx. 19mm from the eyepiece lens, 18.4mm from the eyepiece frame at -1m ⁻¹ (CIPA standard)
Diopter Adjustment	-4.0 to +3.0m ⁻¹
Camera	
SteadyShot	Electronic type (for movies)
Focus Type	Fast Hybrid AF (phase-detection AF / contrast-detection AF)
Focus Mode	Single-shot AF (AF-S) / Continuous AF (AF-C) / Direct Manual Focus (DMF) / Manual Focus
Focus Area	Wide (399 points for phase-detection AF / 25 points for contrast-detection AF) / Center / Flexible Spot (S/M/L) / Expand Flexible Spot / Lock-on AF (Wide / Center / Flexible Spot (S/M/L) / Expand Flexible Spot)
Metering Type	1200-zone evaluative metering
Light Metering Mode	Multi Pattern / Center Weighted / Spot
Exposure Compensation	+/-5.0 EV (in 1/3 EV steps), with exposure compensation dial: +/-3.0 EV (in 1/3 EV steps)
ISO Sensitivity (still image) ^{†1}	ISO 100-25600 (1/3 EV step) (expandable to ISO 50/64/80/32000/40000/51200/64000/80000/102400), AUTO (ISO 100-102400, selectable upper / lower limit), Multi Frame NR: ISO 100-102400 (1 EV step), AUTO (ISO 100-102400, selectable upper / lower limit)
ISO Sensitivity (movie)	ISO 100-25600 equivalent (1/3 EV step), AUTO (ISO 100-25600 equivalent, selectable upper / lower limit)
White Balance Mode	Auto / Daylight / Shade / Cloudy / Incandescent / Fluor.: Warm White / Fluor.: Cool White / Fluor.: Day White / Fluor.: Daylight / Flash / C.Temp. / Filter / Custom
WB Micro Adjustment	Yes (G7 to M7 (57 steps), A7 to B7 (29 steps))
Shutter Speed	Program Auto (30°-1/4000° sec.) / Aperture Priority (30°-1/4000° sec.) / Shutter Priority (30°-1/4000° sec.) / Manual Exposure (Bulb, 30°-1/4000° sec.) / iAuto (4°-1/4000° sec.) *At F5.6 or greater aperture value. Fastest limit at F2 is 1/2000 sec.
Aperture	F2-22
RAW Output	14 bit
Uncompressed RAW	Yes
Image Control	Contrast, Saturation, Sharpness, Creative Style, Color Space (sRGB/Adobe RGB), Quality (RAW / RAW & JPEG / Extra fine / Fine / Standard)
Noise Reduction	Long exposure NR: On / Off, available of shutter speeds longer than 1 sec., High ISO NR: Normal / Low / Off, Multi Frame NR: Auto / ISO 100-102400
Dynamic Range Functions	Off, Dynamic Range Optimizer (Auto / Level 1-5), Auto High Dynamic Range: Off, Auto Exposure Difference, Exposure difference level (1.0-6.0 EV, 1.0 EV step)
Shooting Mode	AUTO (Intelligent Auto / Superior Auto), Program Auto, Aperture Priority, Shutter Speed Priority, Manual Exposure, MR (Memory Recall) 1,2,3, Movie Mode (Program Auto, Aperture Priority, Shutter Speed Priority, Manual Exposure), Panorama, Scene Selection
Scene Selection	Portrait, Sports Action, Landscape, Sunset, Night Scene, Handheld Twilight, Night Portrait, Anti Motion Blur
Continuous Shooting Speed (maximum) (Maximum number of recorded pixels) ^{†2}	Speed priority continuous shooting: approx. 5fps, Continuous shooting: approx. 2.5fps (AF-S) ^{†3}

Specifications and features are subject to change without notice.

*1 REI (Recommended Exposure Index)

*2 You may not be able to shoot images in Burst mode depending on the Shooting mode.

*3 Speed decreases after some shots are taken.

*4 Self-Timer is available.

*5 For movies, compatible Memory Stick PRO Duo (Mark2), Memory Stick PRO-HG Duo, Memory Stick Xc-HG Duo, Memory Stick Micro (Mark2), SD / SDHC / SDXC memory card or microSD / microSDHC / microSDXC card (Class 4 or faster speed is recommended) can be used.

*6 With Adaptor (optional)

*7 Supports Micro USB compatible device.

*8 The LCD screen is turned on, shooting once every 30 seconds, the power turns on and off once every ten times.

*9 Continuous shooting is possible for approximately 29 minutes (limited by product specifications, default setting).

*10 Indication recording time, which is defined by repeating the cycle: Power on, start recording, stand-by, power off.

*11 Based on non-stop recording until the limit (29 minutes or 4GB) is reached, followed by resumption of recording.

http://www.sony.net/digitalimaging/

Environmental Information

Halogenated flame retardants are not used in cabinets and certain printed wiring boards. Recycled paper is used for the carton. Corrugated cardboard and paper are used for the packaging cushions.

SONY, **Cyber-shot** and other marks are trademarks or registered trademarks of Sony Corporation.

All other company and product names mentioned herein are used for identification purposes only and may be the trademarks or registered trademarks of their respective owners.

* Screen displays are simulated.

* Simulated effects are used to illustrate some functions.

Self-Timer	10 sec. / 5 sec. / 2 sec. / 3 or 5 consecutive shots with 10 sec. 5 sec. or 2 sec. delay selectable / Bracketing shots with 10 sec. 5 sec. or 2 sec. delay selectable
Drive Modes	Single, Continuous shooting, Speed priority continuous shooting, Self-timer, Self-timer (cont.), Cont.-bracketing*, Single-bracketing*, White balance bracketing*, DRO bracketing*, LPF bracketing*
Picture Effect	[Still Image] Toy camera, Pop Color, Posterization, Retro Photo, Soft High-key, Partial Color, High Contrast Mono., Soft Focus, HDR Painting, Richtone Monochrome, Miniature, Watercolor, Illustration [Movie] Toy camera, Pop Color, Posterization, Retro Photo, Soft High-key, Partial Color, High Contrast Mono.
Creative Style	Standard, Vivid, Neutral, Clear, Deep, Light, Portrait, Landscape, Sunset, Night Scene, Autumn Leaves, Black & White, Sepia, Style Box
Number of Recognized Scenes	[Still Image] Superior Auto: 44, Intelligent Auto: 33 [Movie] 33
Flash	Flash Off / Autoflash / Fill-flash / Slow Sync. / Rear Sync. / Wireless (with optional compliant flash)
Recording	
Compatible Recording Media ^{†5}	Memory Stick Duo, Memory Stick PRO Duo, Memory Stick PRO Duo (High Speed), Memory Stick PRO-HG Duo, Memory Stick Micro™, Memory Stick Micro (Mark2)™, SD Memory Card, SDHC Memory Card, SDXC Memory Card, microSD Memory Card™, microSDHC Memory Card™, microSDXC Memory Card™
Recording Format	[Still Image]: JPEG (DCF Ver.2.0,Exif Ver.2.3, MPF Baseline compliant), RAW (Sony ARW 2.3 format), [Movie]: XAVC S, AVCHD format Ver.2.0 compatible, MP4
Recording Format (Movie Audio)	XAVC S: LPCM 2ch / AVCHD: Dolby Digital (AC-3) 2ch (Dolby Digital Stereo Creator) / MP4: MPEG-4 AAC-LC 2ch
Color Space (Still)	sRGB / Adobe RGB
Number of Recorded Pixels (Image Size)	[3:2] L: 42M (7,952 x 5,304) / M: 18M (5,168 x 3,448) / S: 11M (3,984 x 2,656), [4:3] L: 38M (7,072 x 5,304) / M: 16M (4,592 x 3,448) / S: 9.4M (3,536 x 2,656), [16:9] L: 36M (7,952 x 4,472) / M: 15M (5,168 x 2,912) / S: 8.9M (3,984 x 2,240), [1:1] L: 28M (5,296 x 5,296) / M: 12M (3,440 x 3,440) / S: 7.1M (2,656 x 2,656), [Sweep Panorama] Standard (3,872 x 2,160 / 8,192 x 1,856) / Wide (5,536 x 2,160 / 12,416 x 1,856)
Movie Recording Mode	NTSC <p>AVCHD: 28M PS (1,920 x 1,080/60p) / 24M FX (1,920 x 1,080/60i) / 17M FH (1,920 x 1,080/60i) / 24M FX (1,920 x 1,080/24p) / 17M FH (1,920 x 1,080/24p), XAVC S HD: 60p 50M (1,920 x 1,080/60p) / 30p 50M (1,920 x 1,080/30p) / 24p 50M (1,920 x 1,080/24p) / 120p 50M (1,280 x 720/120p), MP4: 28M (1,920 x 1,080/60p) / 16M (1,920 x 1,080/30p) / 6M (1,280 x 720/30p)</p> <p>PAL <p>AVCHD: 28M PS (1,920 x 1,080/50p) / 24M FX (1,920 x 1,080/50i) / 17M FH (1,920 x 1,080/50i) / 24M FX (1,920 x 1,080/25p) / 17M FH (1,920 x 1,080/25p), XAVC S HD: 50p 50M (1,920 x 1,080/50p) / 25p 50M (1,920 x 1,080/25p) / 100p 50M (1,280 x 720/100p), MP4: 28M (1,920 x 1,080/50p) / 16M (1,920 x 1,080/25p) / 6M (1,280 x 720/25p)</p></p>
Print	
	Exif Print, PRINT Image Matching (PIM3)
Interface	
Input and Output Terminal	Multi / Micro USB Terminal ^{†7} , Micro HDMI, Microphone (3.5mm Stereo minijack), Multi Interface Shoe
NFC	NFC forum Type 3 Tag compatible, One-touch remote, One-touch sharing
Wi-Fi	Yes (IEEE802.11b/g/n (2.4GHz band))
Power	
Power Source	DC3.6V (supplied battery) / DC5.0V (supplied AC Adaptor)
Battery System	Rechargeable battery pack NP-BX1
Power Consumption (camera mode)	Approx. 2.5W with LCD monitor and approx. 2.7W with viewfinder (CIPA standard)
USB Charge / USB Power Supply	Yes (supplied AC adaptor)
Battery Life	Still Images ^{†8} Monitor: Approx. 220 shots / Approx. 110 min., Viewfinder: Approx. 200 shots / Approx. 100 min. Movies (actual shooting) ^{†9,10} Monitor: Approx. 30 min., Viewfinder: Approx. 30 min. (In [MP4 28M] mode, max. continuous shooting time is approx. 20 min. and max. file size is 4GB.) Movies (continuous shooting) ^{†9} Monitor: Approx. 50 min., Viewfinder: Approx. 50 min. (In [MP4 28M] mode, max. continuous shooting time is approx. 20 min. and max. file size is 4GB.) ^{†11}
Others	
PlayMemories Camera Apps	Yes
Shooting Functions	Smart Teleconverter (approx. 1.4x / 2x) / Eye AF / Lock-on AF / Face Detection / Face Registration / Smile shutter / Grid Line / Quick Navi / Digital Level Gauge (pitch and roll) / Exposure Bracketing / White Balance Bracketing / DRO Bracketing / Flash Bracketing / LPF bracketing / MF Assist / Peaking / Zebra / Marker Display / Photographer Name & Copyright / ISO Auto Minimum Shutter Speed / PC Remote Control / Auto Object Framing
Playback Functions	BRAVIA Sync (Control for HDMI) / Single (with or without shooting information, RGB histogram & highlight/shadow warning) / 9/25-frame index view / Enlarged display mode / Auto Orientation / Slide Show / Panorama scrolling / Auto Review (10sec./5sec./2sec./off) / Forward / Rewind (Movie) / Delete / Protect / 4K still image playback
Dimensions (W x H x D)	113.3 x 65.4 x 72.0mm (4 1/2 x 2 5/8 x 2 7/8 in.)
Weight (CIPA compliant)	Approx. 507g (1 lb 1.9 oz.) (Battery and Memory Stick Duo included) / Approx. 480g (1 lb 0.9 oz.) (Body only)
Operating Temperature	Approx. 0°C to 40°C (32°F to 104°F)
Supplied Accessories	Rechargeable Battery Pack NP-BX1, AC Adaptor AC-UUD11 / 12, Micro USB Cable, Shoulder Strap, Lens Cap, Shoe Cap, Instruction Manual, cleaning cloth, Battery charger (BC-DXC), Eyepiece cup

Sony | Photo Gallery:

http://www.sony.net/Products/di_photo_gallery/



Sony | Camera Channel:

https://www.youtube.com/C/ImagingbySony



SONY

RX1R II



Printed in Japan

The Power of Imaging

Cyber-shot



Full frame. Palm size. Ultimate resolution.

Cutting-edge compact camera technology doesn't get sharper than this.

A fixed-lens design is seamlessly integrated with an advanced full-frame sensor with no fewer than 42.4 effective megapixels (approx.) and ultra-efficient signal processing to give the new RX1R II the capability to capture images of extraordinary resolution. Fast, accurate AF ensures that you capture clear images at every opportunity. A retractable electronic viewfinder allows you to monitor and preview exactly what your shot will look like, and the world's first* optical variable low-pass filter can be controlled to select precisely the effect that you intend. Now, it's perfectly clear: the new RX1R II packs the ultimate in imaging technology — in the palm of your hand.

- Back-illuminated 35mm full-frame Exmor R™ CMOS sensor with approx. 42.4 effective megapixels in a palm-sized compact body
- Large-aperture, fixed focal length ZEISS® Sonnar T* 35mm F2 lens
- BIONZ X™ image processing engine
- Fast Hybrid AF featuring 399 focal plane phase-detection AF points
- The world's first* optical variable low-pass filter
- Retractable XGA OLED Tru-Finder™ and tiltable LCD screen

* Among digital cameras. As of October 2015 press release, based on Sony research.

NEW in this guide marks an advancement over the previous model (RX1R).

Note: Accessories shown in the photo, except eyepiece cup and strap, are optional.







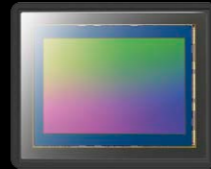


1/40 sec., F11, ISO 100

Perfect corner-to-corner precision

Thanks to the fixed-lens design of the RX1R II, the positions of the lens and image plane on the full frame sensor are precisely aligned to the micron level. This fully utilizes the superior optical performance of the lens and the extra-high 42.4-megapixel* resolution of the full-frame sensor to capture exquisite detail from the center to the edges of the image. The advanced BIONZ X image processing engine is optimally fine-tuned for the lens and image sensor, so it beautifully reproduces the detail to achieve unprecedented image clarity.

* Approximate effective megapixels.



Exmor R
CMOS Sensor



Sony is the world's No. 1 manufacturer of image sensors for digital cameras and video recorders (based on Sony research from April 2014 to March 2015 that shows Sony has a 50% market share).

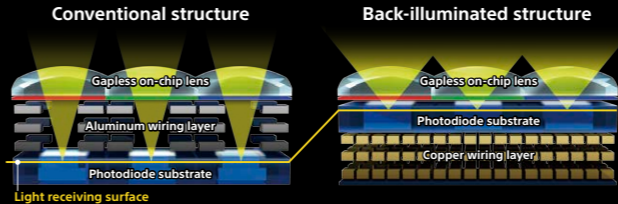


ZEISS

Back-illuminated 35mm full-frame image sensor with 42.4 megapixels^{*1} **NEW**

A groundbreaking 35mm full-frame Exmor R CMOS sensor integrates astonishing 42.4-megapixel^{*1} resolution to achieve the ultimate image quality. Its back-illuminated structure enhances light collection efficiency and expands the circuitry scale of what is now a copper wiring layer for 3.5 times faster data output^{*2}. Sensitivity is greatly expandable to ISO 50-102400 for still shooting. Low-noise performance reveals fine details and subtle nuances of images. These enhancements make it possible for the RX1R II to deliver readout of extraordinarily high-resolution images, AF response and continuous shooting capability, all at high speed.

^{*1} Approximate effective megapixels.
^{*2} In comparison with the RX1R.



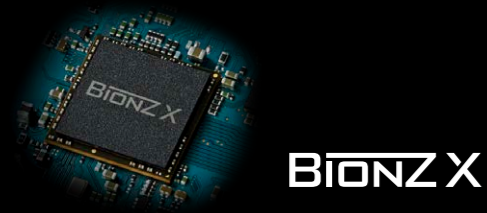
Large-aperture ZEISS® Sonnar T* 35mm F2 lens

The 35mm fixed focal length ZEISS® Sonnar T* lens features a maximum aperture of F2 and a proprietary high-precision AA (advanced aspherical) lens element, in an extremely compact barrel. The nine-blade diaphragm delivers smooth foreground/background defocusing that makes the subject stand out brilliantly. The optical performance of the ZEISS® lens allows the precision high-resolution image sensor to deliver the ultimate in image quality.

Comfortable, precise macro shooting

To activate macro mode, just rotate the macro switching ring on the lens barrel, thereby shortening the minimum focusing distance to 20cm between the subject and image sensor. The lens barrel length is fixed, ensuring greater shooting comfort when the camera is held close to the subject. And you can take advantage of other focusing precision enhancements — including Direct Manual Focus (DMF), Manual Focus (MF), MF Assist, Peaking function and/or built-in retractable XGA OLED Tru-Finder electronic viewfinder — during macro shooting to achieve your ideal focusing effect.

Accelerating every image to greater heights



High-fidelity BIONZ X image processing engine **NEW**

The ultimate signal processing efficacy involves the BIONZ X image processing engine speeding the vast amount of approx. 42.4 effective megapixels of data from the 35mm full-frame Exmor R CMOS sensor. Reliable detail reproduction technology faithfully captures people's perception of realism. Diffraction-reducing technology maintains sharp, fine clarity even at smaller aperture (higher f-number) settings. Area-specific noise reduction reduces noise adaptively according to image area characteristics and reproduces greater detail. The fixed-lens design of the RX1R II also optimizes processing for the lens and the sensor. That means extraordinarily fast, faithful reproduction of every nuance of a scene's light and texture under all conditions.

For finer tonal gradation — supports 14-bit uncompressed RAW format **NEW**

New compatibility with 14-bit uncompressed RAW format brings you capability to choose the optimal format for your needs. The camera thereby ensures supreme quality of tonal gradation to maximize the benefit of the image sensor's wide dynamic range.

Multiple aspect ratios **NEW**

The RX1R II supports 1:1 and 4:3 (in addition to 3:2 and 16:9) aspect ratios, for greater freedom to frame still shots in various ways. 1:1 aspect ratio contains 28 megapixels — adequate for trimming vertically or horizontally oriented images after shooting.

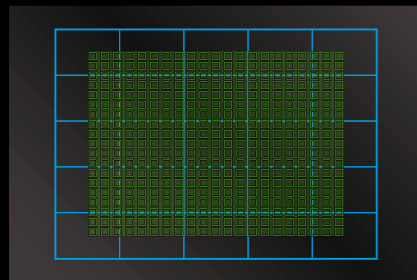


Focus on more perfect moments

High-speed, high-accuracy Fast Hybrid AF **NEW**

Fast Hybrid AF makes its RX debut so you can instantly focus with 399 densely positioned focal plane phase-detection AF points covering 45% of the image area, lens drive optimized for efficient focal positioning for 30% faster AF speed*, plus precise tracking for capturing more decisive moments in photos.

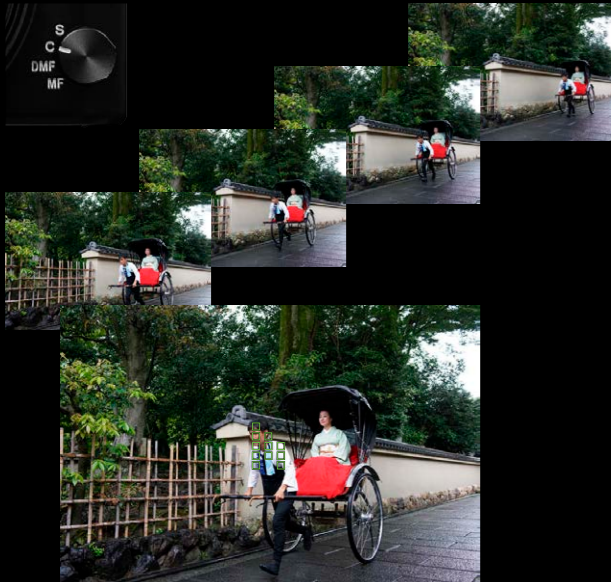
* In comparison with the RX1R.



Phase-detection AF coverage (399 points)
Contrast-detection AF coverage (25 points)

AF-C focus mode and up to 5fps shooting with AF tracking **NEW**

Taking advantage of the phase-detection AF points and their wide AF coverage, the newly employed AF-C (Continuous AF) focus mode gives the RX1R II capability to track moving subjects steadfastly while maintaining sharp focus. You can even shoot continuously at up to 5fps while AF tracking is engaged.



1/400 sec., F4, ISO 1600

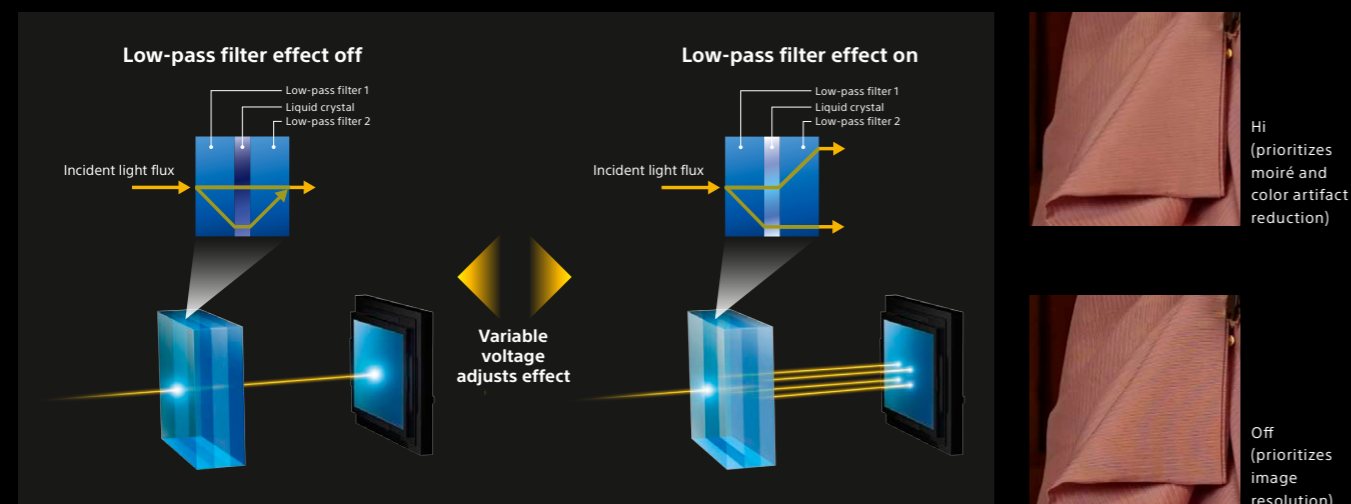
Control resolution to expand expressive range

The world's first^{*1} optical variable low-pass filter **NEW**

The RX1R II has the world's first^{*1} optical variable low-pass filter that lets you control the low-pass filter effect while taking advantage of the image sensor's extra-high 42.4-megapixel^{*2} resolution, to deliver the ultimate image quality, expressed in the way that you intend. The new filter system achieves this by applying voltage to its liquid crystal layer to control a light-splitting function that lets you choose the degree of low-pass filter effect. Three settings^{*3} are available: "Off" prioritizes

image resolution; "Hi" prioritizes moiré and color artifact reduction; and "Standard" balances both of those priorities. This capability enables the RX1R II to perform double duty that would normally require more than one conventional camera. Low-pass filter bracketing makes it easy to compare the effects of the different settings.

^{*1} Among digital cameras. As of October 2015 press release, based on Sony research.
^{*2} Approximate effective megapixels.
^{*3} Available only for shooting stills.



Meticulously crafted for optimal integrity



Retractable XGA OLED Tru-Finder with ZEISS® T* Coating **NEW**

XGA OLED
Tru-Finder

The new Tru-Finder electronic viewfinder, which pops up by a lever and can be pressed back into the camera body, has an advanced optical system of four all-glass lens elements including two molded glass aspherical lenses to deliver clear 0.74x magnification* and corner-to-corner

visibility with minimal distortion. Its ZEISS® T* Coating dramatically reduces reflection, so nuances of colors and dark areas are on view in greater detail. A separate eye-piece cup is included.

* Approx. 0.74x with 50mm lens equiv. at infinity, -1m⁻¹.

Streamlined simplicity

Like a single streamlined block of sculpted magnesium alloy, the body of the RX1R II is trimmed of excess elements. Every component, from textured lens barrel to precision controls, is meticulously refined to enhance operational ease and pride of ownership.

Flexibly tiltable LCD screen **NEW**

The tiltable LCD screen is well-integrated within the RX1R II's compact form, for easy monitoring when shooting various angles from many positions. Its large 3.0-type display, with approx. 1,229k dots, tilts up to 109 degrees upward and up to 41 degrees downward and offers outstanding visibility even when shooting outdoors or under other bright conditions.

Easy, intuitive operation

Controls are optimized so you can intuitively adjust camera settings while framing the subject. Simply rotate the rings around the lens barrel with your left hand to control the aperture or macro switching, as well as focusing. Rotate the front-mounted dial to select a focus mode. Or use the fingers of your right hand to operate the mode dial, exposure compensation dial, custom button, AEL button, etc. All controls are positioned for natural operation.



More functional, operable and reliable

Full HD movie recording and 50Mbps high-bit-rate XAVC S format* **NEW**

The large-aperture lens, full-frame image sensor, and BIONZ X image processing engine together deliver Full HD movies with high resolution and minimal moiré and jaggies. Supporting XAVC S movie recording, the camera can capture Full HD footage at 60p (50p), 30p (25p) or 24p frame rates. Its 50Mbps high-bit-rate movie recording expresses fine details with little compression noise.

* A class 10 or higher SDXC memory card is required to record movies in the XAVC S format.



Connect to smartphones and tablets with one touch **NEW**

Use built-in Wi-Fi and NFC™ (Near Field Communication)* to transfer a photo or MP4 movie instantly by touching the receiving Android™ smartphone or tablet with the camera, then upload it directly to your favorite SNS with ease. Touching your mobile device with the camera can also activate Smart Remote Control, which lets you control the camera's shutter release from the device. Setup is simple by downloading a free PlayMemories Mobile™ app (www.sony.net/pmm/).

* Requires NFC-compatible Android device.



PlayMemories Camera Apps™ **NEW**

www.sony.net/pmca



The exciting application download service, PlayMemories Camera Apps, lets you add new functions to your camera's existing feature set to heighten photographic expression according to your own creative needs. The free popular Smart Remote Control application lets you control various settings from your smartphone or tablet and is newly available in Ver. 4.0 which provides for control of the camera's BULB and continuous shooting functions. Many more apps are also available, including Star Trail, Time-lapse and Smooth Reflection.

Note: Requires a valid Sony Entertainment Network account. Some apps require a fee. Availability of PlayMemories Camera Apps and each app varies according to country or region.

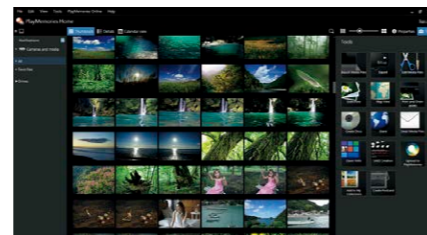


PlayMemories Home™



Easy-to-use image management software installs onto Windows and Mac computers. Use it for easy viewing, editing and printing. You can also upload and share content via network services.

Note: Features are different on Mac and Windows versions.



Capture One Express (for Sony)

Capture One Express (for Sony) is a RAW converter that can be downloaded for free from Phase One. Great for rendering colors and details with incredible precision, it features flexible digital asset management, all essential adjustment tools and fast, responsive performance in one convenient, customizable, integrated solution.



More precise white balance adjustment **NEW**

The RX1R II offers more white balance adjustment steps (twice as many on the amber-blue axis; four times as many on the green-magenta axis) than the RX1R, so you can finely tune white balance with more subtle precision for more natural colors.

Multi Frame NR (Noise Reduction)

This mode combines four shots' best details to significantly suppress noise and raise sensitivity, letting you clearly capture dark scenes without a tripod or flash. Camera shake blur is also lowered while contrast and detail are raised.

1200-zone Evaluative Metering

High-precision metering by an advanced evaluative metering sensor with 1200 zones ensures balanced exposures in wide-ranging lighting conditions. You have a choice of Multi Pattern, Center Weighted or Spot metering mode.

Bright Monitoring **NEW**

This function that boosts image brightness by changing shutter speed, for example, can be assigned to a customizable button for easy access when shooting a starry sky or other dark scene.

ISO Auto Minimum Shutter Speed **NEW**

Prevent blur in a shot of a moving subject by setting a shutter speed at which ISO sensitivity starts changing when ISO AUTO (while in P or A mode, or in Multi Frame NR) is selected.

D-range Optimizer (DRO)

In difficult lighting, DRO corrects your images to achieve smoother, more natural gradations with more detail in the highlights and shadows. You can use it during continuous shooting and when photographing moving subjects.

Focus Magnifier & Peaking function

You can clearly magnify the image to simplify manual fine-tuning of the focus whether shooting still images or movies. The Peaking function can also be activated to colorize the most sharply focused areas of your image for quick confirmation.

Creative Style

Creative Style settings bring out the character of your scene. Simply select any of 13 settings (Vivid, Portrait, etc.) and the camera will adjust image parameters. You can also fine-tune contrast, saturation* and sharpness to suit your preference.

* Not available when B/W or Sepia mode is selected.

Auto HDR (High Dynamic Range)

Auto HDR integrates the best details from three exposures to expand the dynamic range of your images from darkest shadows to brightest highlights and capture all the tonal gradations seen by your naked eye.

Clear Image Zoom

Whether shooting still images or movies, this feature digitally zooms the center of your image up to 2x with nearly imperceptible degradation, thanks to proprietary By Pixel Super Resolution Technology.

Number of recordable frames for single media

(Memory card formatted with this camera, Image size L 4.2M, aspect ratio 3:2)

	8GB	16GB	32GB	64GB
Standard	770	1550	3100	6200
Fine	520	1000	2100	4200
Extra fine	270	540	1050	2150
RAW (Compressed) & JPEG	130	260	520	1050
RAW (Uncompressed) & JPEG	75	150	300	600
RAW (Compressed)	170	350	700	1400
RAW (Uncompressed)	88	175	355	710

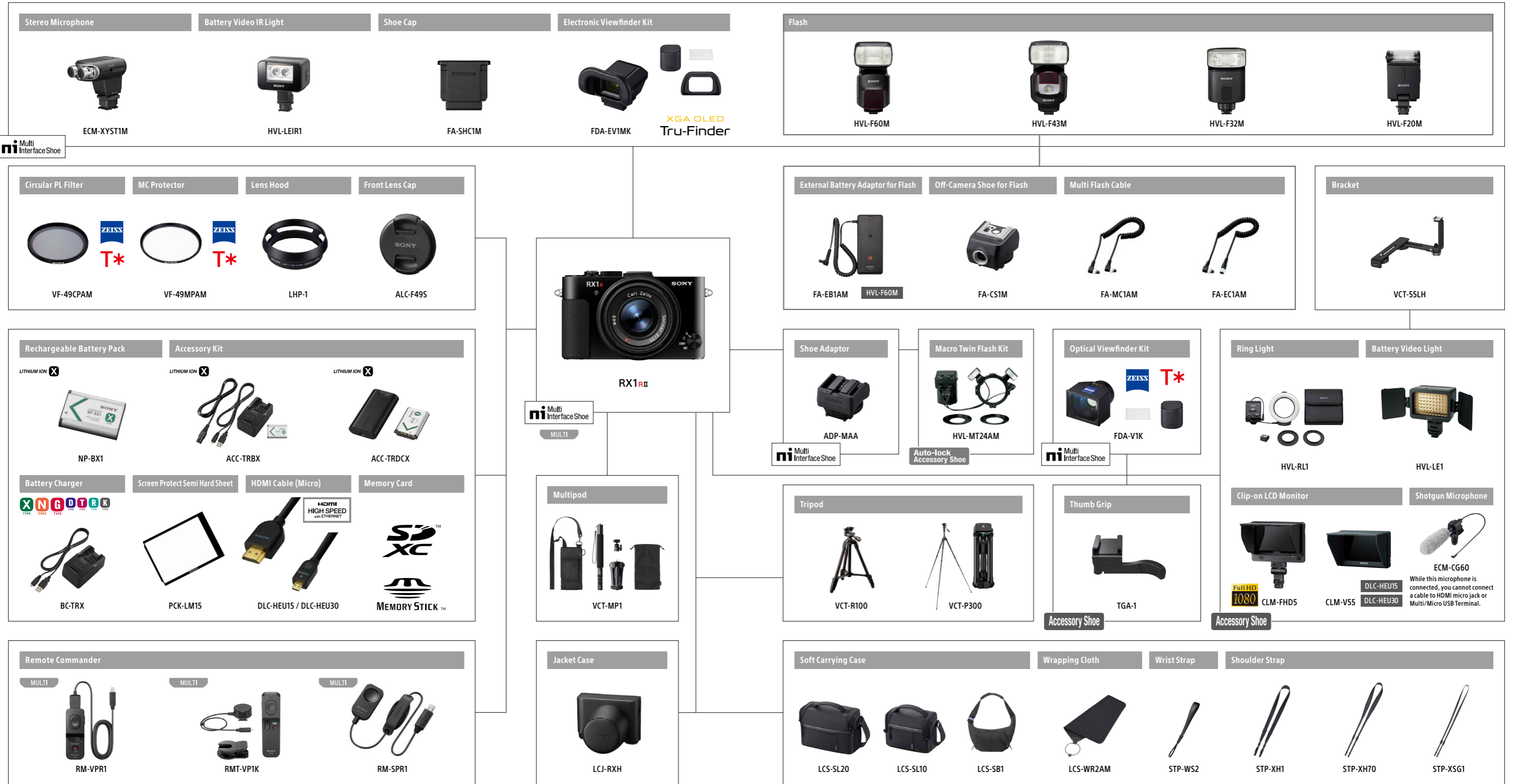
Movie recording time for single media

(Hours:Minutes:Seconds)

	16GB	32GB	64GB	128GB
XAVC S HD 60p/50p, 50M	-	-	2:35:00	5:10:00
XAVC S HD 30p/25p, 50M	-	-	2:35:00	5:10:00
XAVC S HD 24p, 50M	-	-	2:35:00	5:10:00
XAVC S HD 120p/100p, 50M	-	-	2:35:00	5:10:00
AVCHD 60i/50i, 24M (FX)	1:25:00	3:00:00	6:00:00	12:05:00
AVCHD 60i/50i, 17M (FH)	2:00:00	4:05:00	8:15:00	16:35:00
AVCHD 60p/50p, 28M (PS)	1:15:00	2:30:00	5:05:00	10:15:00
AVCHD 24p/25p, 24M (FX)	1:25:00	3:00:00	6:00:00	12:05:00
AVCHD 24p/25p, 17M (FH)	2:00:00	4:05:00	8:15:00	16:35:00
MP4 60p/50p, 28M	1:15:00	2:35:00	5:20:00	10:40:00
MP4 30p/25p, 16M	2:00:00	4:10:00	8:25:00	16:55:00
MP4 1280 x 720, 30p/25p, 6M	5:20:00	10:55:00	22:00:00	44:10:00

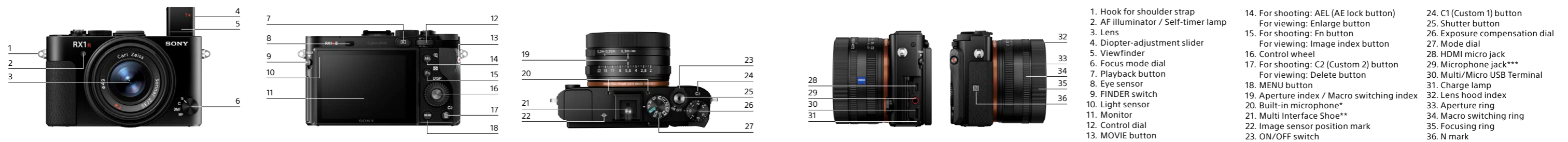
- Recommended memory cards for movie recording in AVCHD/MP4 formats: Memory Stick PRO Duo (Mark2), Memory Stick PRO-HG Duo, SD memory card/SDHC memory card/SDXC memory card (Class 4 or more)
- Recommended memory card for movie recording in XAVC S format: SDXC memory card higher than Class 10
- The numbers in the table show approximate maximum recordable time obtained by totaling all movie files.
- AVCHD movies are automatically divided into separate files up to a maximum of 2GB each.

Accessories System Chart



Note: When two or more accessories are attached simultaneously, they may not be usable depending on the combination of accessories attached. Please refer to the support information.

Controls and dials



* Covering this part while recording movies may cause noise or lower the volume.
 ** For details on compatible accessories for the multi interface shoe and the Multi/Micro USB Terminal, visit the Sony website, or consult your Sony dealer or local authorized Sony service facility. You can also use accessories that are compatible with the accessory shoe. Operations with other manufacturers' accessories are not guaranteed.
 *** When an external microphone is connected, you cannot connect cables to the HDMI micro jack and the Multi/Micro USB Terminal.