

FM/AM CD Clock Radio

Operating Instructions

Owner's Record

The model number and the serial number are located on the bottom. Record the serial number in the space provided below. Refer to them whenever you call upon your Sony dealer regarding this product.

Model No. ICF-CD7000

Serial No. _____



No Power No problem is a trademark of Sony Corporation.

DREAM MACHINE

Dream Machine is a trademark of Sony Corporation.

ICF-CD7000

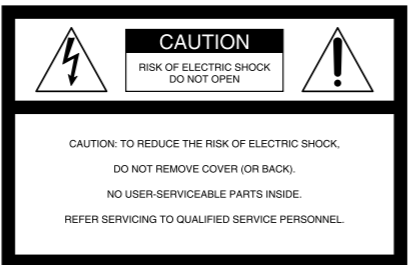
© 2007 Sony Corporation Printed in China

For customers who purchased this product in the USA
Please register this product on line at <http://www.sony.com/productregistration>. Proper registration will enable us to send you periodic mailings about new products, services, and other important announcements. Registering your product will also allow us to contact you in the unlikely event that the product needs adjustment or modification. Thank you.

WARNING

To reduce the risk of fire or electric shock, do not expose this apparatus to rain or moisture.

To avoid electrical shock, do not open the cabinet. Refer servicing to qualified personnel only. Do not install the appliance in a confined space, such as a bookcase or built-in cabinet. To reduce the risk of fire or electric shock, do not place objects filled with liquids, such as vases, on the apparatus. Connect the apparatus to an easily accessible AC outlet. Should you notice an abnormality in the apparatus, disconnect the main plug from the AC outlet immediately.



This symbol is intended to alert the user to the presence of uninsulated "dangerous voltage" within the product's enclosure that may be of sufficient magnitude to constitute a risk of electric shock to persons.



This symbol is intended to alert the user to the presence of important operating and maintenance (servicing) instructions in the literature accompanying the appliance.

* The graphical symbols are at the bottom of the unit.

INFORMATION

This equipment has been tested and found to comply with the limits for a Class B digital device, pursuant to Part 15 of the FCC Rules. These limits are designed to provide reasonable protection against harmful interference in a residential installation. This equipment generates, uses and can radiate radio frequency energy and, if not installed and used in accordance with the instructions, may cause harmful interference to radio communications. However, there is no guarantee that interference will not occur in a particular installation. If this equipment does cause harmful interference to radio or television reception, which can be determined by turning the equipment off and on, the user is encouraged to try to correct the interference by one or more of the following measures:

- Reorient or relocate the receiving antenna.
- Increase the separation between the equipment and receiver.
- Connect the equipment into an outlet on a circuit different from that to which the receiver is connected.
- Consult the dealer or an experienced radio/ TV technician for help.

You are cautioned that any changes or modifications not expressly approved in this manual could void your authority to operate this equipment.

CAUTION
The use of optical instruments with this product will increase eye hazard.

WARNING

Battery may explode if mistreated. Do not recharge, disassemble or dispose of in fire.

For the state of California, USA only
Perchlorate Material – special handling may apply. See www.disc.ca.gov/hazardouswaste/perchlorate
Perchlorate Material: Lithium battery contains perchlorate

Features

- Illumination (High/Low/Off)
- Built-in audio cable for digital music players
- Built-in CD player with CD-R/RW playback function
- FM/AM 2-band digital tuner
- 15 Station Presets (10 FM, 5 AM)
- Automatic Time/Daylight Saving Time Setting
- No Power No Problem Alarm System
- Triple time display: A main display for the clock and two sub-displays for the alarms
- Nap Timer (Count Down Timer)
- Extendable Snooze time from 10 to 60 min

Precautions

- Use the power source specified in "Specifications" to operate the unit.
- The name plate indicating operating voltage, etc. is located on the bottom of the unit.
- To disconnect the power cord (mains lead), pull it out by the plug, not the cord.
- Do not carry the unit by the FM wire antenna and the AC power cord.
- Do not leave the unit in a location near a heat source such as a radiator or air duct, or in a place subject to direct sunlight, excessive dust, mechanical vibration, or shock.
- Allow adequate air circulation to prevent internal heat build-up. Do not place the unit on a surface (a rug, blanket, etc.) or near materials that might block the ventilation holes such as a curtain.
- Should any solid object or liquid fall into the unit, unplug the unit and have it checked by a qualified personnel before operating it any further.
- When the casing becomes soiled, clean it with a soft cloth dampened with mild detergent solution. Never use abrasive cleansers or chemical solvents, as they may mar the casing.

If you have any questions or problems concerning your unit, please consult your nearest Sony dealer.

Troubleshooting

Should the problem persists after you have made the following checks, consult your nearest Sony dealer.

The clock flashes "AM 12:00" due to a power interruption.

- The battery is low. Replace the battery. Remove the old battery and install a new one.

The CD, radio or buzzer alarm does not sound at the preset alarm time.

- Hasn't "ALARM A" or "ALARM B" in the display gone out?
- The CD or radio alarm is activated but no sound comes on at the preset alarm time.
- Has VOLUME been adjusted ?

The CD player does not operate.

- Did you close the CD compartment lid?
- Did you insert the disc correctly?
The disc should be inserted with the label side up.
- Dusty or defective disc — Clean the disc with an optional cleaning cloth. Wipe the disc from the center out.
- Take out the CD and leave the CD compartment open for about an hour to allow condensation to evaporate.

Sporadic loss of sound during CD operation.

- Dusty or defective disc — Clean or replace the disc.
- Excessively high volume — Reduce the volume.
- Strong vibration.

No sound comes from the speakers.

- Has VOLUME been adjusted ?

Specifications

AUDIO POWER SPECIFICATIONS

POWER OUTPUT AND TOTAL HARMONIC DISTORTION
With 8-ohm loads, both channels driven from 150 – 10 000 Hz; rated 0.8 W per channel-minimum RMS power, with no more than 10% total harmonic distortion in AC operation.

CD player section

System: Compact disc digital audio system

Laser diode properties:

Material: GaAlAs
Wavelength: 785 – 800 nm
Emission duration: Continuous
Laser output: Less than 44.6 μW
(This output is the value measured at a distance of about 200 mm from the objective lens surface on an optical pick-up block with a 7-mm aperture.)

Number of channels: 2

Frequency response: 20 – 20 000 Hz ±1 dB

Wow and flutter: Below measurable limit

Radio section

Frequency range:

FM: 87.5 – 108 MHz

AM: 530 – 1 710 kHz

Antennas:

FM: FM wire antenna

AM: Built-in ferrite bar antenna

General

Time display: 12-hour system

Speaker: 50 mm (2 inches) diam., 8 Ω, cone type (2)

Input: Built-in audio cable with stereo-mini plug (1); minimum input level 245mV, impedance 47 kΩ

Power outputs:

1 W + 1 W (at 8 Ω, 10% harmonic distortion)

Power requirements: 120 V AC, 60 Hz

For power backup: 3 V DC, one CR2032 battery

Dimensions:

Approx. 170 × 136 × 204 mm (w/h/d)

(Approx. 6 3/4 × 5 3/8 × 8 1/8 inches) incl. projecting parts and controls

Mass:

Approx. 1 700 g (3 lb 12 oz) incl. CR2032 battery

Design and specifications are subject to change without notice.

IMPORTANT SAFEGUARDS

For your protection, please read these safety instructions completely before operating the appliance, and keep this manual for future reference. Carefully observe all warnings, precautions and instructions on the appliance and in the operating instructions, and adhere to them.

INSTALLATION

Water and Moisture

Do not use powerline operated appliances near water - for example, near a bathtub, washbowl, kitchen sink, or laundry tub, in a wet basement, or near a swimming pool, etc.

Heat

Do not place the appliance near or over a radiator or heat register, or where it is exposed to direct sunlight.

Ventilation

The slots and openings in the cabinet are provided for necessary ventilation. To ensure reliable operation of the appliance, and to protect it from overheating, these slots and openings must never be blocked or covered.

-Never cover the slots and openings with a cloth or other materials.

-Never block the slots and openings by placing the appliance on a bed, sofa, rug or other similar surface.

-Never place the appliance in a confined space, such as a bookcase, or built-in cabinet, unless proper ventilation is provided.

Accessories

Do not place the appliance on an unstable cart, stand, tripod, bracket, or table. The appliance may fall, causing serious injury to a child or an adult, and serious damage to the appliance. Use only a cart, stand, tripod, bracket, or table recommended by Sony.

-An appliance and cart combination should be moved with care. Quick stops, excessive force, and uneven surfaces may cause the appliance and cart combination to overturn.

Wall or Ceiling Mounting

If your appliance can be mounted to a wall or ceiling, mount it only as recommended by Sony.

USE

Power Source

This appliance should be operated only from the type of power source indicated on the marking label. If you are not sure of the type of electrical power supplied to your home, consult your dealer or local power company. For those appliances designed to operate from battery power, or other sources, refer to the operating instructions.

Grounding or Polarization

This appliance is equipped with a polarized AC power cord plug (a plug having one blade wider than the other), or with a three-wire grounding type plug (a plug having a third pin for grounding). Follow the instructions below:

-For the appliance with a polarized AC power cord plug:

This plug will fit into the power outlet only one way. This is a safety feature. If you are unable to insert the plug fully into the outlet, try reversing the plug. If the plug should still fail to fit, contact your electrician to have a suitable outlet installed. Do not defeat the safety purpose of the polarized plug by forcing it in.

-For the appliance with a three-wire grounding type AC plug:

This plug will only fit into a grounding-type power outlet. This is a safety feature. If you are unable to insert the plug into the outlet, contact your electrician to have a suitable outlet installed. Do not defeat the safety purpose of the grounding plug.

Overloading

Do not overload wall outlets, extension cords or convenience receptacles beyond their capacity, since this can result in fire or electric shock.

When not in use

Unplug the power cord of the appliance from the outlet when left unused for a long period of time.

To disconnect the cord, pull it out by grasping the plug. Never pull the plug out by the cord.

Power-Cord Protection

Route the power cord so that it is not likely to be walked on or pinched by items placed upon or against them, paying particular attention to the plugs, receptacles, and the point where the cord exits from the appliance.

Lightning

For added protection for this appliance during a lightning storm, or when it is left unattended and unused for long periods of time, unplug it from the wall outlet and disconnect the antenna or cable system. This will prevent damage to the appliance due to lightning and powerline surges.

Object and Liquid Entry

Never push objects of any kind into the appliance through openings as they may touch dangerous voltage points or short out parts that could result in a fire or electric shock. Never spill liquid of any kind on the appliance.

Cleaning

Unplug the appliance from the wall outlet before cleaning or polishing it. Do not use liquid cleaners or aerosol cleaners. Use a cloth lightly dampened with water for cleaning the exterior of the appliance. Clean the appliance only as recommended by Sony.

Attachments

Do not use attachments not recommended by Sony, as they may cause hazards.

ANTENNAS

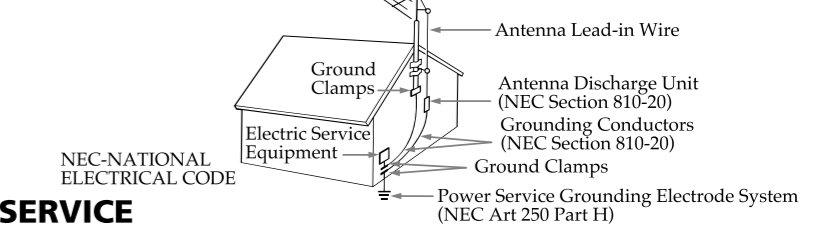
Outdoor Antenna Grounding

If an outdoor antenna or cable system is installed, follow the precautions below.

An outdoor antenna system should not be located in the vicinity of overhead power lines or other electric light or power circuits, or where it can come in contact with such power lines or circuits. WHEN INSTALLING AN OUTDOOR ANTENNA SYSTEM, EXTREME CARE SHOULD BE TAKEN TO KEEP FROM CONTACTING SUCH POWER LINES OR CIRCUITS AS CONTACT WITH THEM IS ALMOST INVARIABLY FATAL.

Be sure the antenna system is grounded so as to provide some protection against voltage surges and built-up static charges. Section 810 of the National Electrical Code provides information with respect to proper grounding of the mast and supporting structure, grounding of the lead-in wire to an antenna discharge unit, size of grounding conductors, location of antenna-discharge unit, connection to grounding electrodes, and requirements for the grounding electrode.

Antenna Grounding According to the National Electrical Code



SERVICE

Damage Requiring Service

Unplug the appliance from the wall outlet and refer servicing to qualified service personnel under the following conditions:

- When the power cord or plug is damage or frayed.
- If liquid has been spilled or objects have fallen into the appliance.
- If the appliance has been exposed to rain or water.
- The appliance does not appear to operate normally or exhibits a marked change in performance.
- This indicates a need for service.
- If the appliance does not operate normally when following the operating instructions, adjust only those controls that are specified in the operating instructions. Improper adjustment of other controls may result in damage and will often require extensive work by a qualified technician to restore the appliance to normal operation.
- If the appliance has been subject to excessive shock by being dropped, or the cabinet has been damaged.

Servicing

Do not attempt to service the appliance yourself as opening or removing covers may expose you to dangerous voltage or other hazards. Refer all servicing to qualified service personnel.

Replacement parts

When replacement parts are required, be sure the service technician has used replacement parts specified by Sony that have the same characteristics as the original parts. Unauthorized substitutions may result in fire, electric shock, or other hazards.

Safety Check

Upon completion of any service or repairs to the appliance, ask the service technician to perform routine safety checks (as specified by Sony) to determine that the appliance is in safe operating condition.

<http://www.sony.net/>

SONY® Tape Cassette Player/Recorder/CD Player/Mini Disc DAT/Radio/Head Phone/Speaker/MIC/Personals

Portable Audio

LIMITED WARRANTY

Sony Electronics Inc. ("Sony") warrants this Product (including any accessories) against defects in material or workmanship as follows:

1. **LABOR:** For a period of one (1) year from the date of purchase, if this Product is determined to be defective, Sony will repair or replace the Product, at its option, at no charge, or pay the labor charges to any Sony authorized service facility. After the Warranty Period, you must pay for all labor charges.
2. **PARTS:** In addition, Sony will supply, at no charge, new or rebuilt replacements in exchange for defective parts for a period of one (1) year. After the warranty period, you must pay for all parts costs.
3. **ACCESSORIES:** Parts and labor for all accessories are for one (1) year.

To obtain warranty service, you must take the Product, or deliver the Product freight prepaid, in either its original packaging or packaging affording an equal degree of protection, to any authorized Sony service facility.

This warranty does not cover customer instruction, installation, set up adjustments or signal reception problems.

This warranty does not cover cosmetic damage or damage due to acts of God, accident, misuse, abuse, negligence, commercial use, or modification of, or to any part of the Product, including the antenna. This warranty does not cover damage due to improper operation or maintenance, connection to improper voltage supply, or attempted repair by anyone other than a facility authorized by Sony to service the Product. This warranty does not cover Products sold AS IS or WITH ALL FAULTS, or consumables (such as fuses or batteries). This warranty is valid only in the United States.

Proof of purchase in the form of a bill of sale or receipted invoice which is evidence that the unit is within the Warranty period must be presented to obtain warranty service.

This warranty is invalid if the factory applied serial number has been altered or removed from the Product.

REPAIR OR REPLACEMENT AS PROVIDED UNDER THIS WARRANTY IS THE EXCLUSIVE REMEDY OF THE CONSUMER. SONY SHALL NOT BE LIABLE FOR ANY INCIDENTAL OR CONSEQUENTIAL DAMAGES FOR BREACH OF ANY EXPRESS OR IMPLIED WARRANTY ON THIS PRODUCT. EXCEPT TO THE EXTENT PROHIBITED BY APPLICABLE LAW, ANY IMPLIED WARRANTY OF MERCHANTABILITY OR FITNESS FOR A PARTICULAR PURPOSE ON THIS PRODUCT IS LIMITED IN DURATION TO THE DURATION OF THIS WARRANTY.

Some states do not allow the exclusion or limitation of incidental or consequential damages, or allow limitations on how long an implied warranty lasts, so the above limitations or exclusions may not apply to you. In addition, if you enter into a service contract with the Sony Partnership within 90 days of the date of sale, the limitation on how long an implied warranty lasts does not apply to you. This warranty gives you specific legal rights, and you may have other rights which vary from state to state.

For your convenience, Sony Electronics Inc. has established telephone numbers for frequently asked questions:

To locate the servicer or dealer nearest you, or for service assistance or resolution of a service problem, or for product information or operation, call:

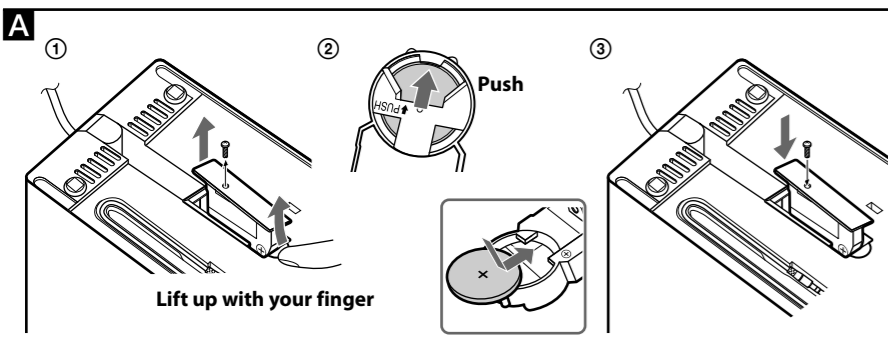
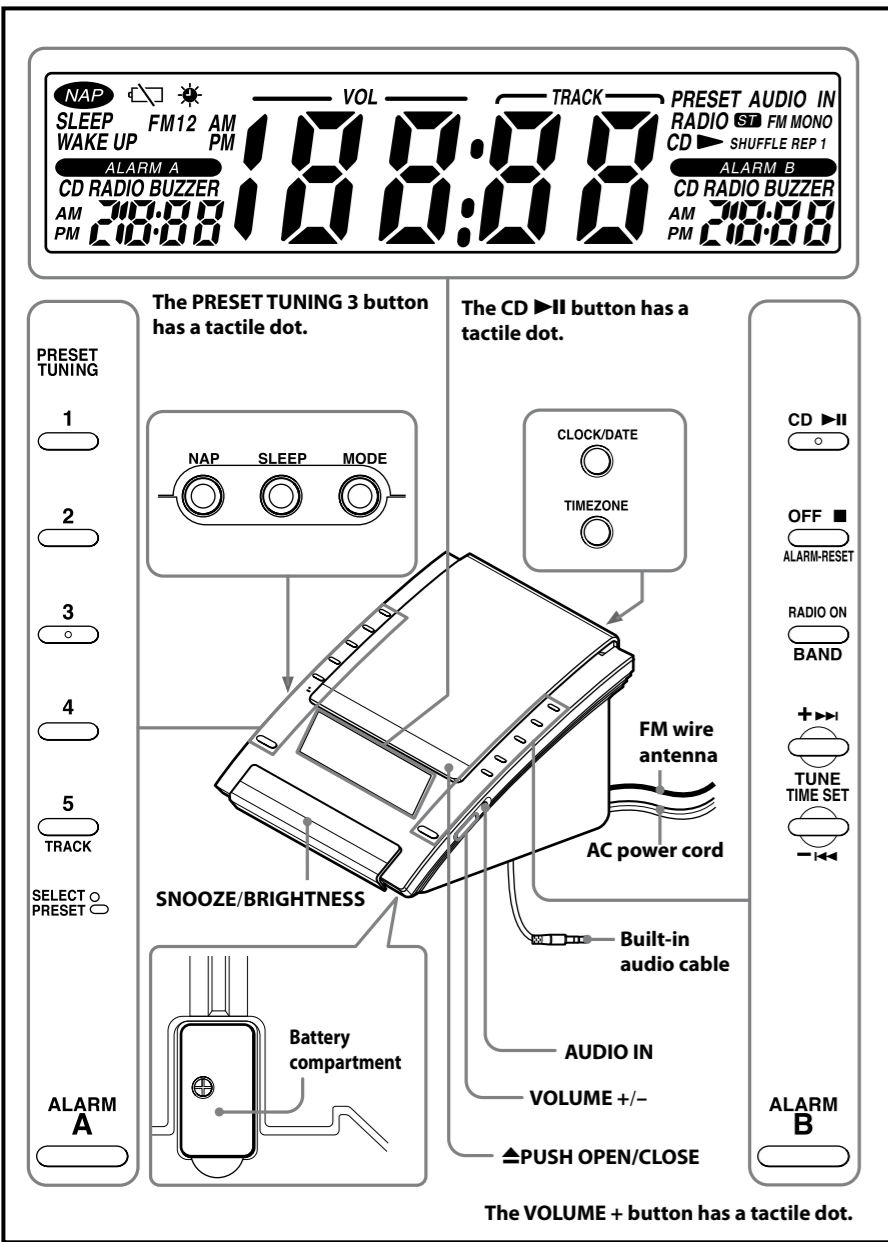
Sony Customer Information Services Center
1-800-222-7669
or visit the Sony Web Site:
www.sony.com

For an accessory or part not available from your authorized dealer, call:

1-800-488-SONY (7669)

D 455714502

This unit includes a preinstalled Sony Lithium battery (CR2032) as back-up power source for the clock, which is present to EST (Eastern Standard Time) at the factory. And this battery is considered part of the product.



About the Backup Battery

To keep good time, this unit contains one CR2032 battery inside of the unit as a backup power source. The battery keeps the clock operating in the event of a power interruption.

Knowing when to replace the battery

When the battery becomes weak, "Ⓢ" appears in the display. If a power interruption occurs while the battery is weak, the current time and alarm will be initialized. Replace the battery with a Sony CR2032 lithium battery. Use of another battery may cause a fire or explosion.

Note
If "AM 12:00" flashes in the display when the unit is connected to AC outlet for the first time, the battery may be weak. In this case, consult your Sony dealer.

Replacing the battery

- Keep the AC plug connected to the AC outlet and use a screwdriver to remove the screw that secures the battery holder at the bottom of the unit. (See Fig. A-①)
- Push the exhausted battery out from the bottom of the battery holder and insert a new battery with the + side facing up. (See Fig. A-②)
- Insert the battery holder back into the unit and secure it with the screw. (See Fig. A-③)
- Press **RADIO ON*****BAND** to turn "Ⓢ" off in the display.

Note
When replacing the battery, do not disconnect AC plug from AC outlet. If you do, the current time, alarm and NAP timer will be initialized.

Battery Warning
If the unit is to be left unplugged for a long time, remove the battery to avoid undue battery discharge and damage to the unit from battery leakage.

- NOTES ON THE LITHIUM BATTERY**
- Dispose of the used battery promptly. Keep the lithium battery out of the reach of children. Should the battery be swallowed, consult a doctor immediately.
 - Wipe the battery with a dry cloth to assure a good contact.
 - Be sure to observe correct polarity when installing the battery.
 - Do not hold the battery with metallic tweezers, otherwise a short-circuit may occur.
 - Do not expose the battery to excessive heat such as direct sunlight, fire or the like.

WARNING
There is a danger of explosion if the battery is incorrectly replaced. Replace only with the same or equivalent type recommended by the equipment manufacturer.

Setting the Clock for the First Time

This unit is preset to the current EST (Eastern Standard Time) at the factory, and is powered by the back up battery. All you need to do the first time is just plug it in, select your time zone.

- Plug in the unit. The current EST (Eastern Standard Time) appears in the display.
- Press **TIMEZONE**. Area number "2" appear in the display.

- Press **TIMEZONE** repeatedly to select the number as follows:

Area number	Time zone
1	Atrantic standard Time
2 (default setting)	Eastern standard Time
3	Central standard Time
4	Mountain standard Time
5	Pacific standard Time
6	Yukon standard Time
7	Hawaian standard Time

The area number appears in the display for a few seconds and then the display returns to the current time. After the current time reappears, press **TIMEZONE** to check the area number.

Note
Though the clock is correctly set at the factory, discrepancies may arise during transport or storage. If necessary, set the clock to the correct time by referring to "Setting the Clock Manually".

When daylight saving time (summer time) begins

This model automatically adjusts for daylight saving time (summer time). "*" is displayed from the beginning of daylight saving time (summer time) and disappears at the end of the daylight saving time (summer time) automatically.

- Daylight saving time (summer time) begins at: 2:00 AM on the second Sunday of March.
- Standard time begins at: 2:00 AM on the first Sunday of November.

Setting the Clock Manually

- Plug in the unit.
- Hold down **CLOCK/DATE** until a short beep sounds. The year starts to flash in the display.
- Press **TUNE*TIME SET +** or **-** repeatedly to set the year.
- Press **CLOCK/DATE**.
- Repeat steps 3 and 4 to set the month, the day, hour, and minute, and then press **CLOCK/DATE**. Two short beeps sound and the seconds start incrementing from zero.

- Notes**
- The clock setting will be cancelled if you press **OFF** ***ALARM-RESET** while setting the clock.
 - If you do not press a button for about 1 minute while setting the clock, the clock setting will be cancelled.

To display the year and date

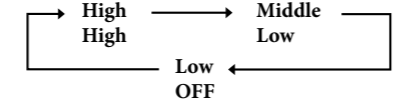
Press **CLOCK/DATE** once for the date, and within 2 seconds press it again for the year. The display shows the date or year for about 4 seconds and then changes back to the current time.

To change to daylight saving time (summer time) indication

Hold down **OFF** ***ALARM-RESET** and **TIMEZONE** until two short beeps sound. "*" is displayed, "On" appear for a few seconds, and then the time changes to daylight saving time (summer time). To deactivate the daylight saving time (summer time) function, hold down **OFF** ***ALARM-RESET** and **TIMEZONE** until two short beeps sound again. "OFF" appears for a few seconds, and then "*" disappears.

Setting the Brightness of the Backlight and Illumination

By pressing the **SNOOZE/BRIGHTNESS** button, you can select the brightness level of the backlight and illumination. The brightness level of the backlight changes in conjunction with that of the illumination.



Upper : Backlight level
Lower : Illumination level

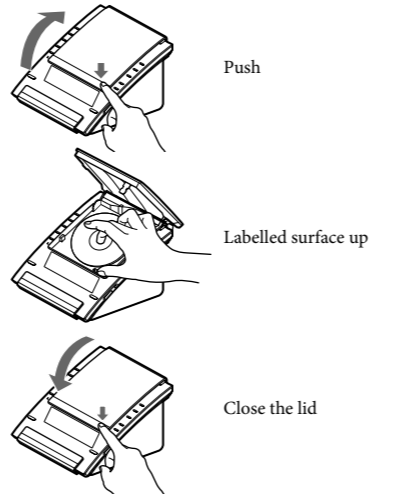
While the alarm is sounding, the **SNOOZE/BRIGHTNESS** button cannot be used to change the brightness of the display. It can, however, be used for the SNOOZE function.

- Plug in the unit. The current EST (Eastern Standard Time) appears in the display.
- Press **TIMEZONE**. Area number "2" appear in the display.

Playing a CD

An 8 cm (3-inch) CD can be played without an adaptor.

- Push **▲PUSH OPEN/CLOSE** to open the CD compartment lid and insert a disc.
- Push **▲PUSH OPEN/CLOSE** to close the CD compartment lid.



- Press **CD** ►**II**. "CD" ► and "TRACK 01" appear in the display to indicate that track 1 of the CD is playing.
- Press **VOLUME +** or **-** repeatedly to adjust the volume.

To	Press
Pause	CD ► II
Resume play after pause	CD ► II again
Cue to the beginning of the current track (AMS*)	◀◀ **
Cue to the next track (AMS*)	▶▶ **
Go back at high speed	Hold down ◀◀ **
Go forward at high speed	Hold down ▶▶ **
Locate a previous track (AMS*)	◀◀ repeatedly**
Locate a succeeding track (AMS*)	▶▶ repeatedly**
Stop play	■

* AMS = Automatic Music Sensor
** These operations are possible during both play and pause.

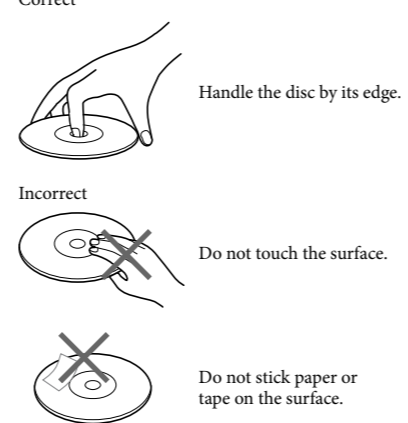
About CD-Rs/CD-RWs

This unit is compatible with CD-Rs/CD-RWs but playback capability may vary depending on the quality of the disc, the recording device and application software.

Music discs encoded with copyright protection technologies

This product is designed to play back discs that conform to the Compact Disc (CD) standard. Recently, various music discs encoded with copyright protection technologies are marketed by some record companies. Please be aware that among those discs, there are some that do not conform to the CD standard and may not be playable by this product.

To handle compact discs



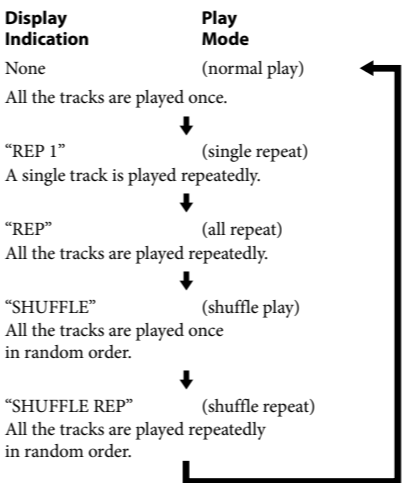
Note on DualDiscs
A DualDisc is a two sided disc product which mates DVD recorded material on one side with digital audio material on the other side. However, since the audio material side does not conform to the Compact Disc (CD) standard, playback on this product is not guaranteed.

- Notes**
- Discs with non-standard shapes (e.g., heart, square, star) cannot be played on this unit. Attempting to do so may damage the unit. Do not use such discs.
 - If you press **CD** ►**II** when there is no disc in the CD compartment, "00" flashes for about 5 seconds in the display and the unit turns off automatically.

Various Modes of CD Playback

You can play tracks repeatedly or in random order.

Press **MODE**. Each press changes the play mode as follows:



Listening to the Radio —Manual Tuning

- Press **RADIO ON*****BAND** to turn on the radio. "RADIO" appears in the display.
- Press **RADIO ON*****BAND** repeatedly to select the desired band. Each press changes the band as follows:
FM1 → FM2 → AM

When using a FM1 or FM2 preset mode, you may listen to the radio in either mode (see "Presetting Your Favorite Station").

- Use **TUNE*TIME SET +** or **-** to tune into a station. Two short beeps sound when the minimum frequency of each band is received during tuning.
- Adjust the volume using **VOLUME +** or **-**.

When you release **TUNE*TIME SET +** or **-** after locating your desired station, the display returns to the current time after about 10 seconds.

To check the frequency of a tuned-in station, press **RADIO ON*****BAND** and the frequency will appear for about 10 seconds.

To turn off the radio, press **OFF** ***ALARM-RESET**.

Improving the Reception

- FM:** Extend the FM wire antenna fully to increase reception sensitivity.
AM: Rotate the unit horizontally for optimum reception. A ferrite bar antenna is built into the unit.

- The following conditions may interfere with the radio reception:
 - When the unit is placed on a steel desk or metal surface
 - When the unit is near a metal surface (such as a metal wall).
 - When the unit is near a digital music player that is turned on.

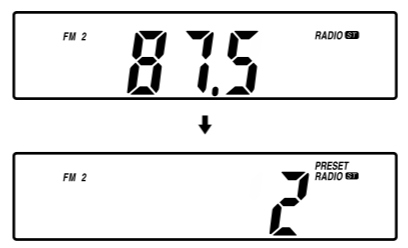
Presetting Your Favorite Station

—Preset Tuning
You can preset up to 10 FM stations (5 stations in FM1, 5 stations in FM2), and 5 AM stations.

Presetting a Station

- Follow steps 1 to 3 in "Listening to the Radio" and manually tune in the station you wish to preset.
- Hold down the desired **PRESET TUNING** button (1 to 5) until two short beeps sound.

Example: The following display appears when you preset FM 87.5 MHz to **PRESET TUNING 2** button for FM2.



The display shows the frequency for about 10 seconds, and then returns to the current time.

To preset another station, repeat these steps. To change the preset station, tune in the desired station and hold down the desired **PRESET TUNING** (1 to 5) until two short beeps sound. The new station will replace the station previously set to the **PRESET TUNING** button.

Tuning in to a Preset Station

- Press **RADIO ON*****BAND** to turn on the radio.
- Press **RADIO ON*****BAND** to select the band.
- Press the desired **PRESET TUNING** button.
- Adjust the volume using **VOLUME +** or **-**. After about 4 seconds, the display returns to the current time.

Note
Holding down the desired **PRESET TUNING** button for 2 seconds or more in step 3 will replace the station previously set to the **PRESET TUNING** button with the station you are tuned in to.

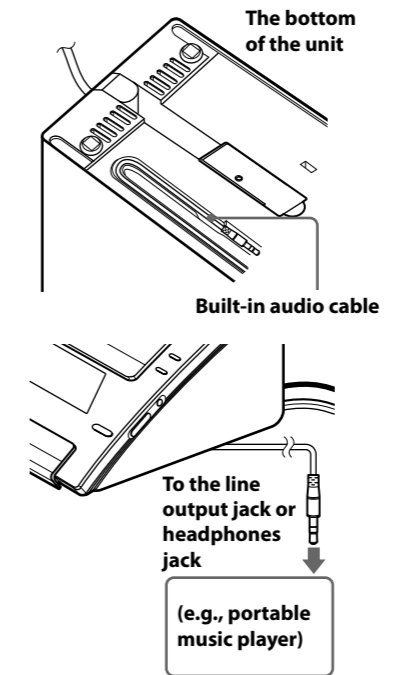
Switching between Monaural and Stereo

Stereo reception is the default setting for the radio. "ST" will appear in the display when an FM broadcast is clearly received. If FM stereo reception is poor, change to "FM MONO (monaural)". Noise will be reduced although the sound will not be in stereo.

- Press **RADIO ON*****BAND** to turn on the radio.
- Press **RADIO ON*****BAND** repeatedly to select FM 1 or FM 2.
- Press **MODE**. A short beep sounds. "FM MONO" appears in the display. To change back to stereo mode, press **MODE** again.

Listening to the Sound from a Connected Optional Component

- Connect the built-in audio cable with the stereo-miniplug on the bottom of the unit to the line output jack or headphones jack on the optional component (e.g., portable music player).



- Press **AUDIO IN**. "AUDIO IN" appears in the display
- Play the optional component connected to the unit's built-in audio cable.
- Adjust the volume using **VOLUME +** or **-**.

To turn off the sound from the optional component, press **OFF*****ALARM-RESET**, and then turn off the optional component.

- Notes**
- Connect the built-in audio cable firmly to prevent a malfunction.
 - Keep digital music players away from the speakers.

Setting the Alarm

This CD clock radio is equipped with 3 alarm modes—CD, radio and buzzer. Before setting the alarm, make sure to set the clock (see "Setting the Clock for the First Time").

To Set the Alarm

- Hold down **ALARM A** or **B** until a short beep sounds. The hour flashes in display.

- Press **TUNE*TIME SET +** or **-** repeatedly until the desired hour appears. To set the hour rapidly, hold down **TUNE*TIME SET +** or **-**.
- Press **ALARM A** or **B**. A short beep sound and the minute flashes.
- Repeat step 2 to set the minute and press **ALARM A** or **B**. A short beep sound and the alarm mode setting is entered.
- Press **TUNE*TIME SET +** or **-** repeatedly until the desired alarm mode flashes. You can choose one mode among "CD", "RADIO" and "BUZZER". Set the alarm mode as follows:
 - CD: see "A" Setting the CD Alarm".
 - RADIO: see "B" Setting the Radio Alarm".
 - BUZZER: see "C" Setting the Buzzer Alarm".

A Setting the CD Alarm

For the CD alarm, the track you specified as the wake-up track is played first. (If the CD play mode is set to "SHUFFLE" or "SHUFFLE REP", all the tracks will be played in random order.)

- Perform steps 1 to 5 in "To set the Alarm".
- Press **ALARM A** or **B** to select "CD" alarm mode. A short beep sounds and "WAKE UP TRACK" appears in the display.
- Press **TUNE*TIME SET +** or **-** to select the desired wake-up track number.
- Press **ALARM A** or **B**. A short beep sounds and "WAKE UP VOLUME" appears in the display.
- Press **TUNE*TIME SET +** or **-** to adjust the volume. You can also adjust the volume using **VOLUME +** or **-**.
- Press **ALARM A** or **B**. Two short beeps sound and the setting is entered. When "ALARM A" or "ALARM B" does not appear with "CD" in the display, press **ALARM A** or **B** again. The CD will play at the set time.

Note
If the CD alarm does not operate because a disc error occurred, there is no disc, or the CD compartment lid is open, the buzzer alarm will operate instead.

B Setting the Radio Alarm

For the radio alarm, the station you specify as the wake-up station is played.

- Perform steps 1 to 5 in "To set the Alarm".
- Press **ALARM A** or **B** to select "RADIO" alarm mode. After the preset number flashes, "WAKE UP STATION" appears in the display.
- Press **TUNE*TIME SET +** or **-** to select the desired wake-up station. The station changes as follows:
FM1 PRESET 1 - 5 ↔ FM2 PRESET 1 - 5
"- -" is the last station received. You can directly select the desired wake-up station by pressing **RADIO ON*****BAND** or the **PRESET TUNING** button while the "- -" indication is not displayed.
- Press **ALARM A** or **B**. A short beep sounds and "WAKE UP VOLUME" appears in the display.
- Press **TUNE*TIME SET +** or **-** to adjust the volume. You can also adjust the volume using **VOLUME +** or **-**.
- Press **ALARM A** or **B**. Two short beeps sound and the setting is entered. When "ALARM A" or "ALARM B" does not appear with "RADIO" in the display, press **ALARM A** or **B** again. The radio will turn on at the set time.

C Setting the Buzzer Alarm

- Perform steps 1 to 5 in "To set the Alarm".
- Press **ALARM A** or **B** to select "BUZZER" alarm mode. Two short beeps sound and the setting is entered. When "ALARM A" or "ALARM B" does not appear with "BUZZER" in the display, press **ALARM A** or **B** again. The buzzer will sound at the set time.

Note
The volume cannot be set for the buzzer alarm.

ALARM ON—
Press **ALARM A** or **B** to activate the alarm setting. If "ALARM A" or "ALARM B" does not appear in the display, the alarm setting is not activated. You can only check the alarm setting when it is activated. **Example:** The following display shows the crrent time and the CD ALARM A for 7:00 am.



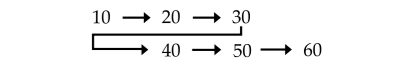
If you set the CD alarm and there is no disc in the CD player, the buzzer alarm will sound instead at the time set.

In case of the alarm, the beeping of the alarm becomes louder after every few seconds in three progressive stages.

Note
When Alarm A and B are set for the same time, Alarm A takes precedence.

To Doze for a Few More Minutes

Press **SNOOZE*****BRIGHTNESS**. The CD, radio or buzzer alarm turns off, but it will be automatically activated again after about 10 minutes. Every time you press **SNOOZE*****BRIGHTNESS**, the snooze time changes as follows:



The display shows the snooze time for a few seconds, and then returns to the current time. When you press **SNOOZE*****BRIGHTNESS** after the current time appears, the snooze time goes back to 10 minutes again.

The maximum length of the snooze time is 60 minutes.

ALARM OFF—

Press **ALARM A** or **B** to deactivate the alarm setting. The CD, radio, or buzzer alarm turns off automatically after 60 minutes.

To Stop the Alarm

Press **OFF** ***ALARM-RESET** to turn off the alarm. The alarm will sound again at the same time the next day.

Note on the alarm in the event of a power interruption

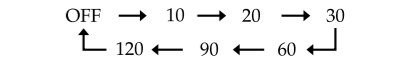
In the event of a power interruption, the alarm will work until the battery is totally discharged. But following functions are different:

- Backlight will not light up.
- If the alarm mode is set to CD or radio, it will change to BUZZER automatically.
- If a power interruption occurs while the alarm is sounding, the alarm will stop.
- If **OFF** ***ALARM-RESET** is not pressed, the alarm sounds for about 5 minutes.
- If "Ⓢ" appears in the display, the alarm will not sound in the event of power interruption. Replace the battery if "Ⓢ" appears.
- If a power interruption occurs while the buzzer alarm is sounding, the **SNOOZE** button will not operate.

Using the NAP Timer (Count Down Timer)

The NAP timer sounds the buzzer after a preset duration has elapsed.

Press **NAP** repeatedly until the desired duration is displayed. Every press changes the display as follows:



"NAP" appears and the NAP time is displayed for a few seconds. NAP timer starts counting down.

When the selected NAP duration has ended, a short beep sounds, and "NAP" flashes in the display. The buzzer turns off automatically after about 60 minutes.

To Stop the NAP Timer

Press **NAP** or **OFF** ***ALARM-RESET** to turn off the buzzer.

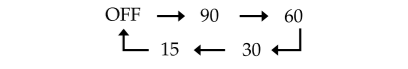
To Deactivate the NAP Timer

Press **NAP**. "NAP" goes off in the display.

Setting the Sleep Timer

The sleep timer allows you to fall asleep to the sound of a CD, the radio, or input from the AUDIO IN function. It does this by automatically turning off the CD, radio, or input from the AUDIO IN function after a preset duration.

Press **SLEEP** during CD, radio, or optional component play. You can set the sleep timer to durations of 90, 60, 30, or 15 minutes. Every press changes the duration as follows:



"SLEEP" will appear in the display when the duration is set. The CD, the radio, or the optional component will play for the set duration, and then shut off.