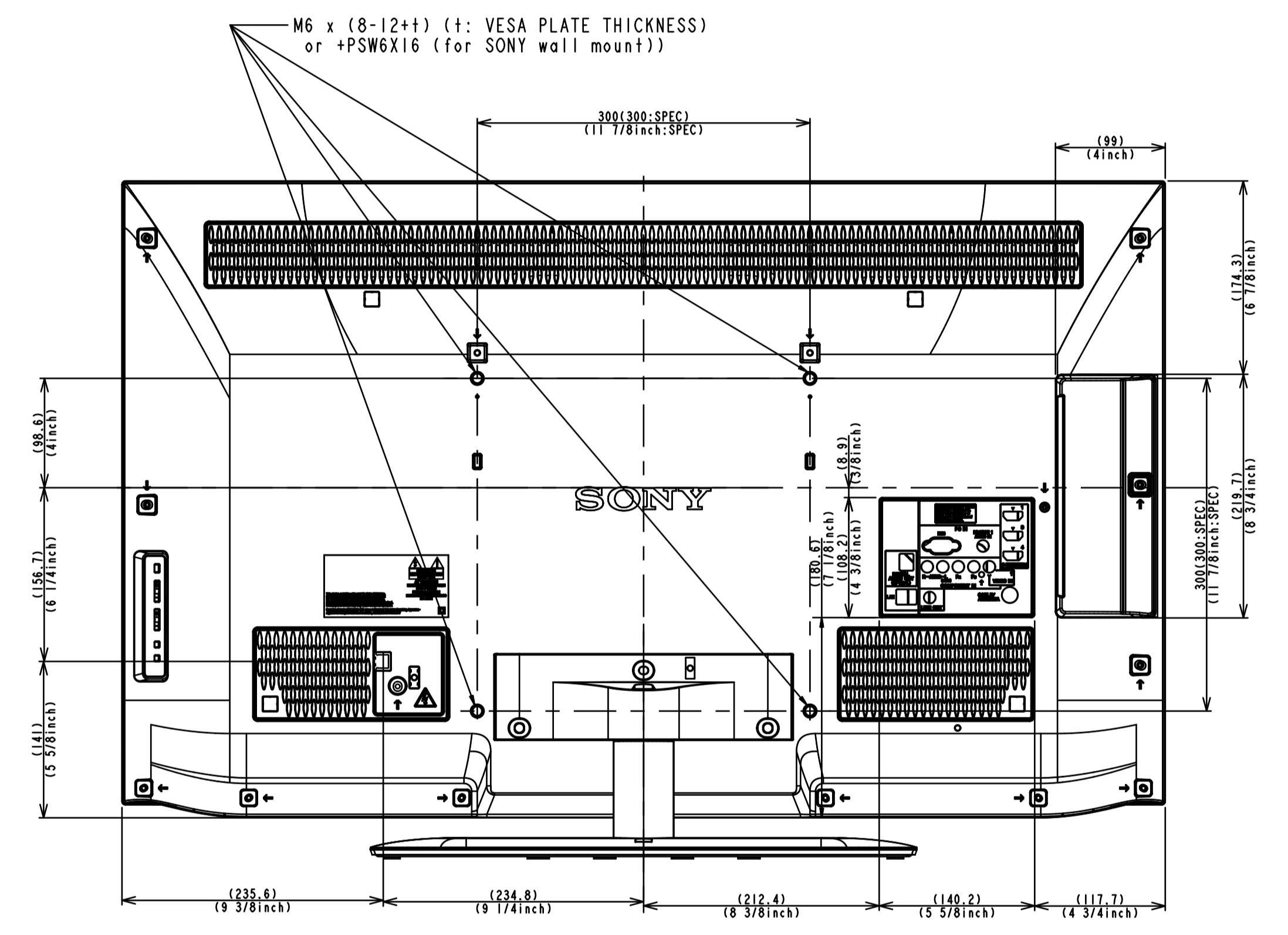
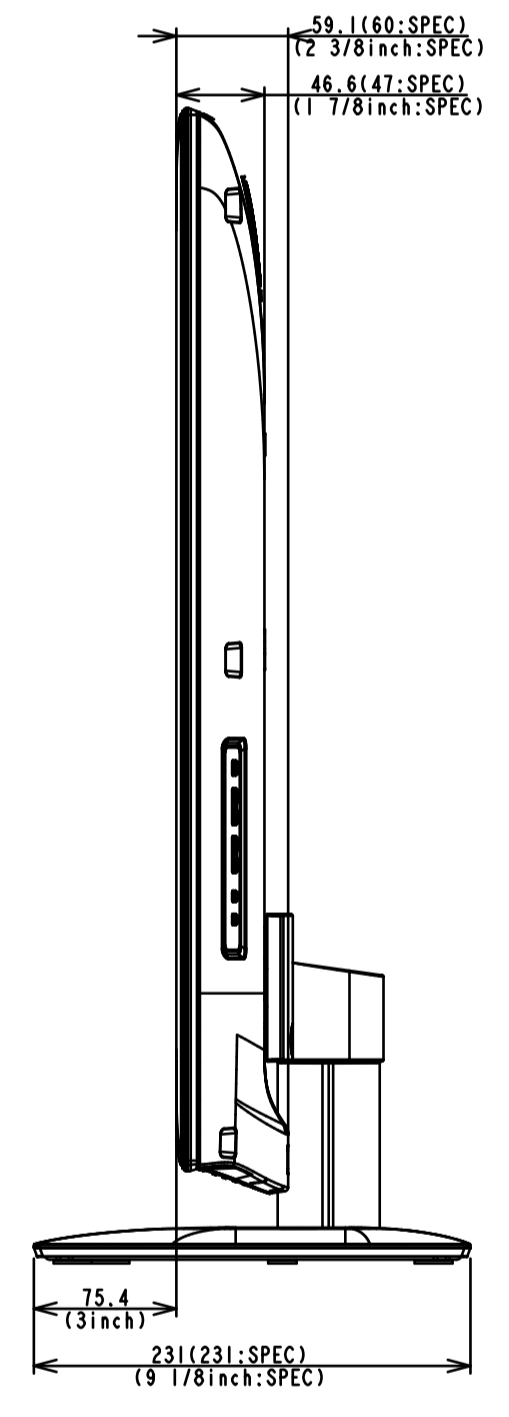
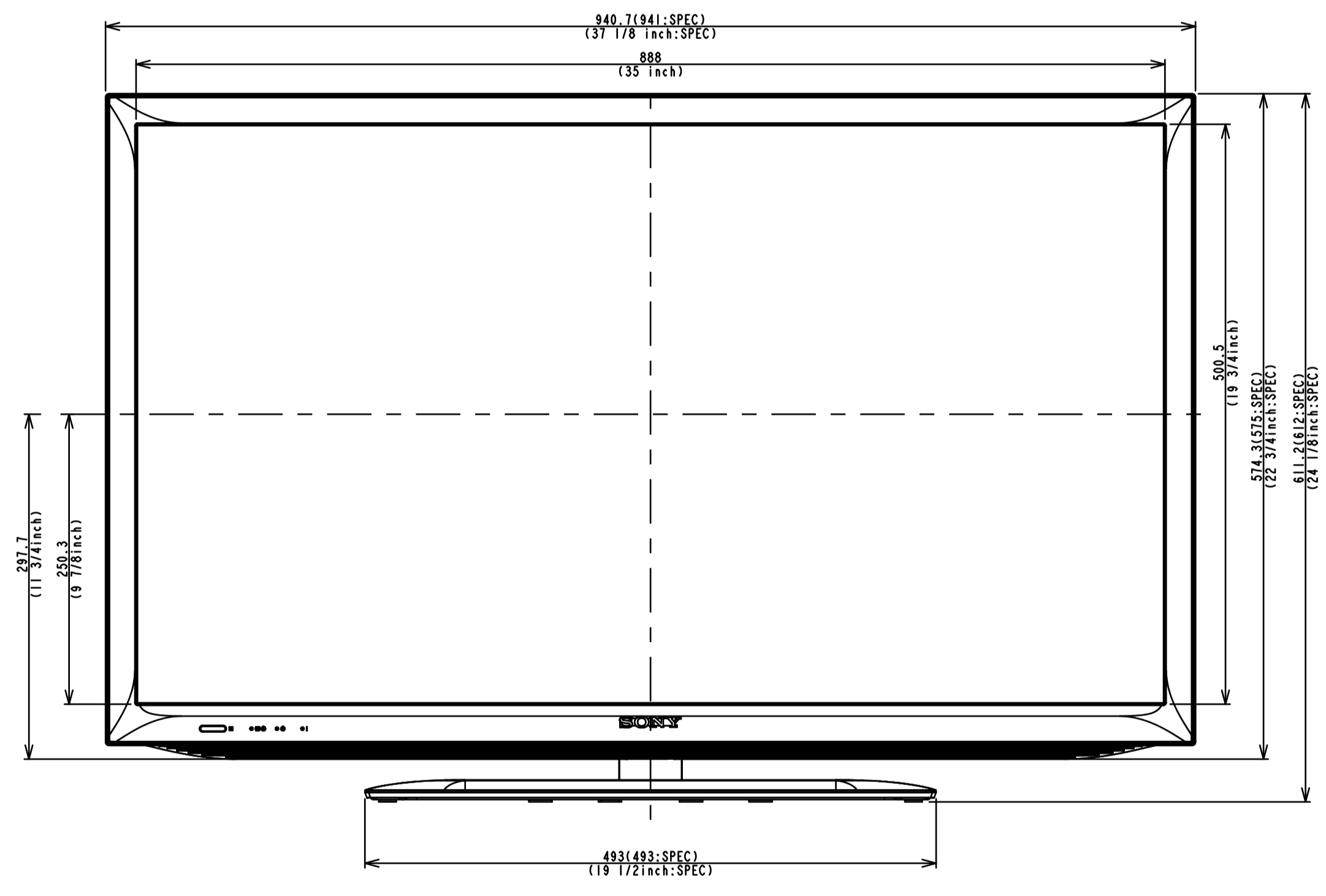
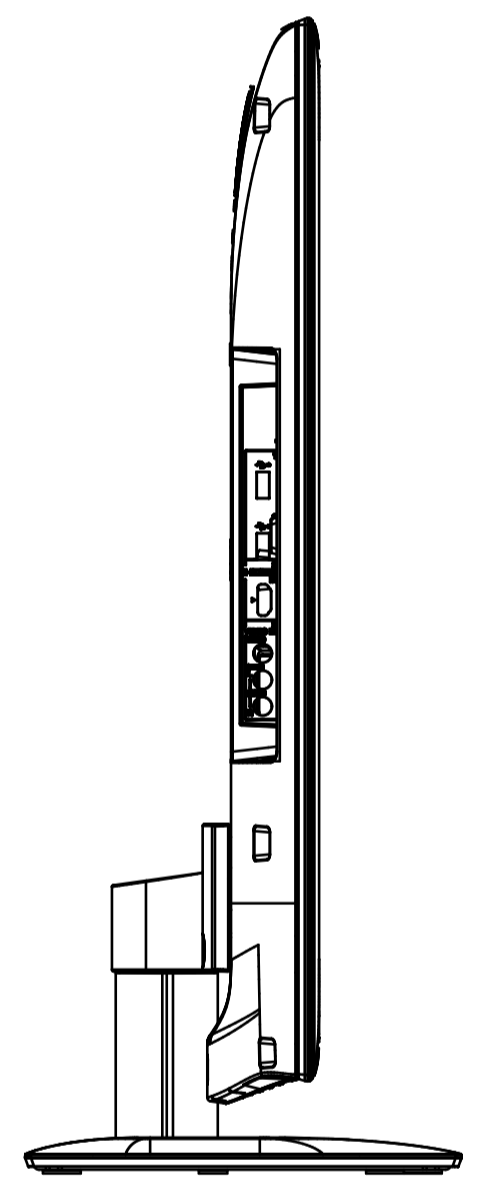
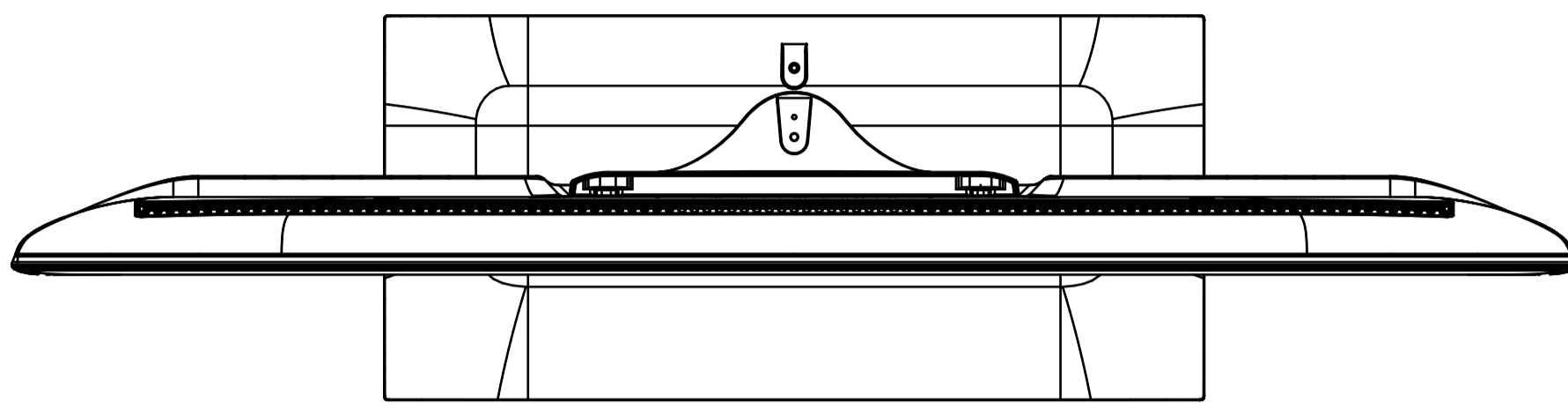
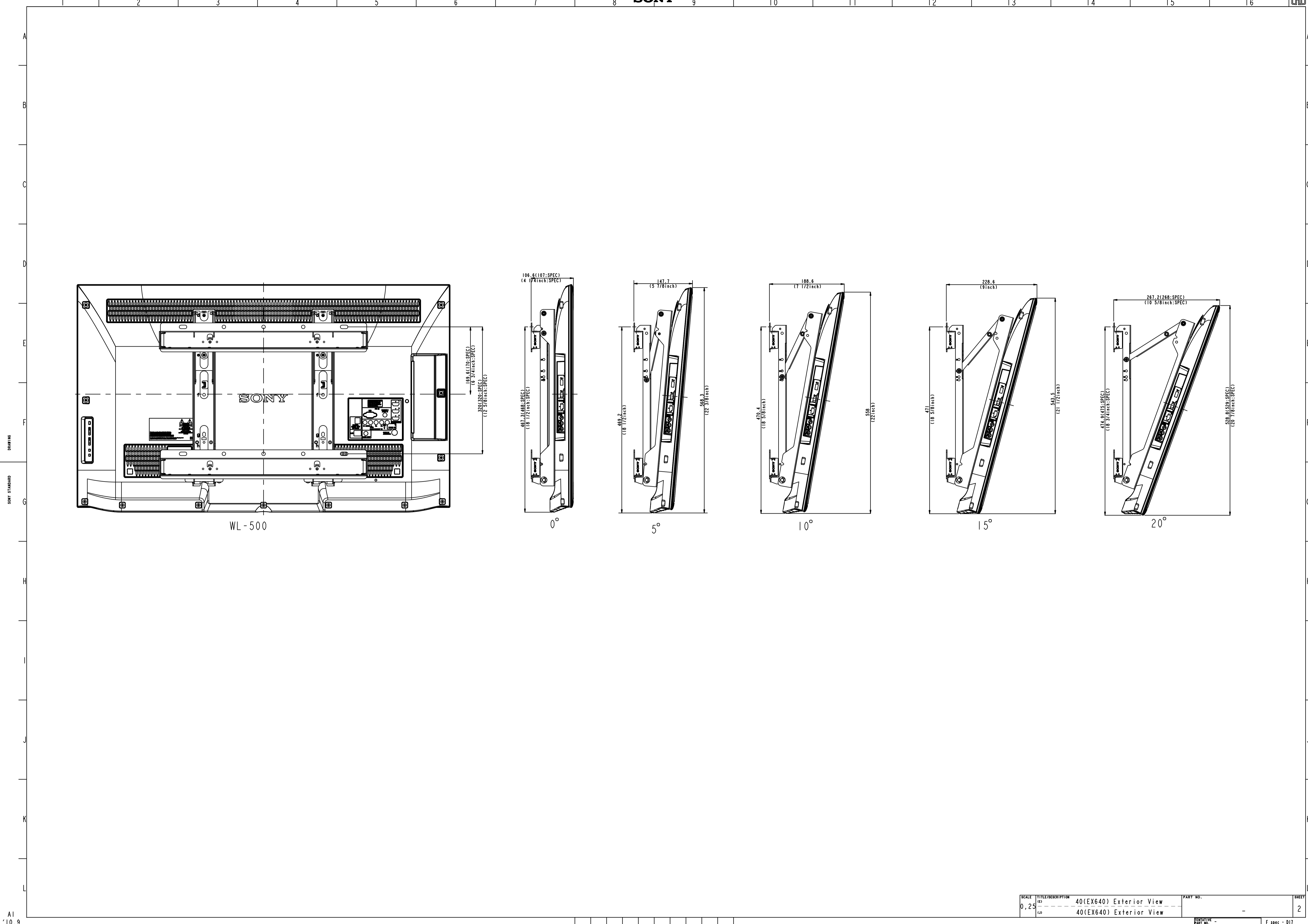


Area	NORTH AMERICA
Model Name	KDL-40EX640
SV No.	SV-22296
TV only (WxHxD)	941x575x60 mm/37 1/8x22 3/4x2 3/8inch
TV with Stand (WxHxD)	941x612x231mm/37 1/8x24 1/8x9 1/8inch
Media Receiver (WxHxD)	-
Monitor only (WxHxD)	-
Monitor with Stand (WxHxD)	-
Media Receiver with Stand (WxHxD)	-
Satellite Speaker (WxHxD)	-
Stand Width	493mm/19 1/2inch
VESA Hole Pitch	300 x 300 mm/11 7/8 x 11 7/8inch
TV Only	11.5kg/25.4lb
TV With Stand	△ 14.1kg/31.1lb
Media Receiver	-
Monitor Only	-
Monitor With Stand	-
Media Receiver with Stand	-
Satellite Speaker	-
Remarks	-



DRAWING
SONY STANDARD

UNIT	TOLERANCE	USED ON	RANK
mm			
ANGLE			FAMILY
SCALE	0.250	ORIGINAL MODEL	FINISH(COLOR)
MATERIAL(COLOR)			
TITLE/DESCRIPTION	40(EX640) Exterior View		
HISTORY SUFFIX	Correction of the value / Revise		
DATE	2007-11	REVISION	NO.
DRAWN BY	PLANNED BY	CHECKED BY	APPROVED BY
TEMPERATURE	PART NO.	PART NO.	PART NO.
SHEET			1/2



SONY STANDARD DRAWING

WL-500

0°

5°

10°

15°

20°

SCALE	0,25	TITLE/DESCRIPTION	40(EX640) Exterior View	PART NO.	-	SHEET	2
			40(EX640) Exterior View				