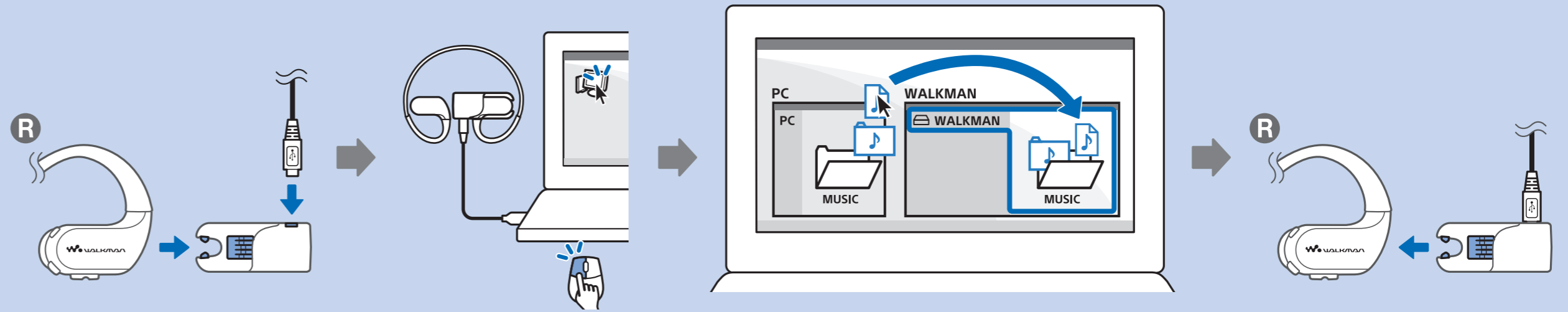


SONY



WALKMAN  
NW-WS623

1

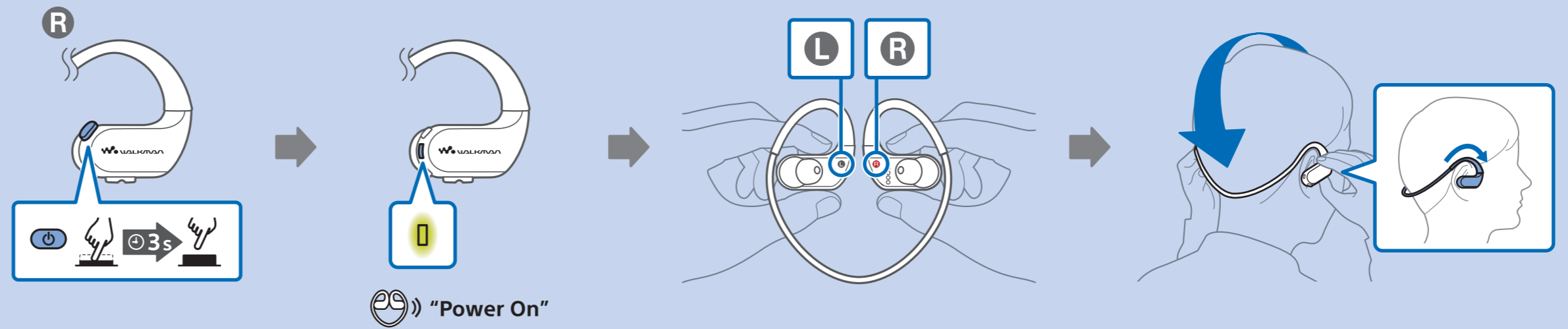


4-688-947-11(1)



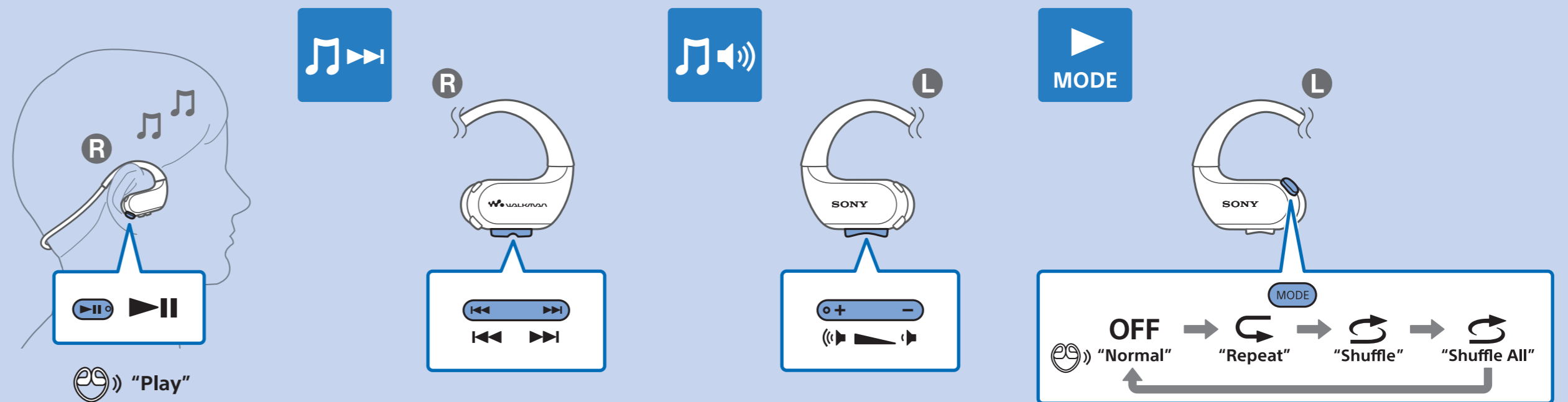
©2017 Sony Corporation Printed in Malaysia

2



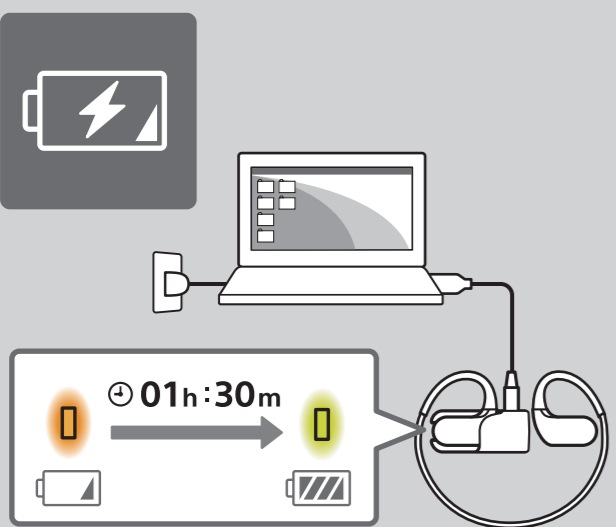
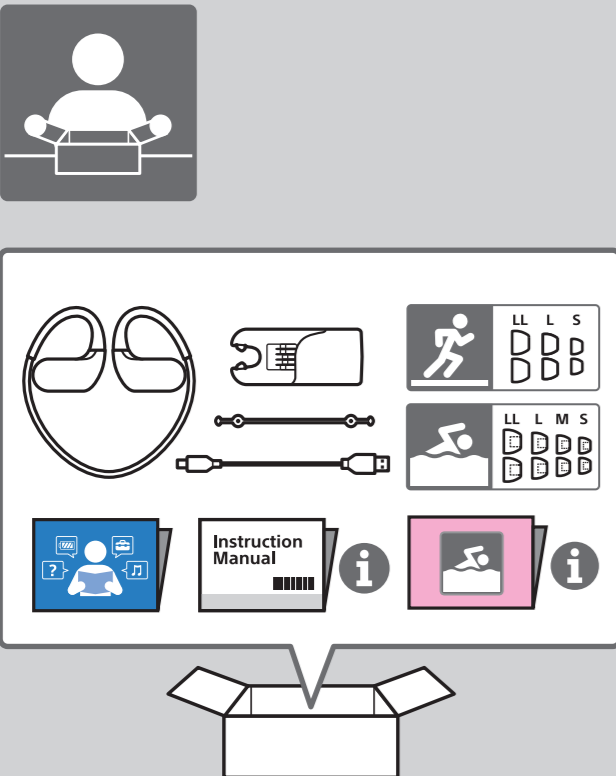
Power On

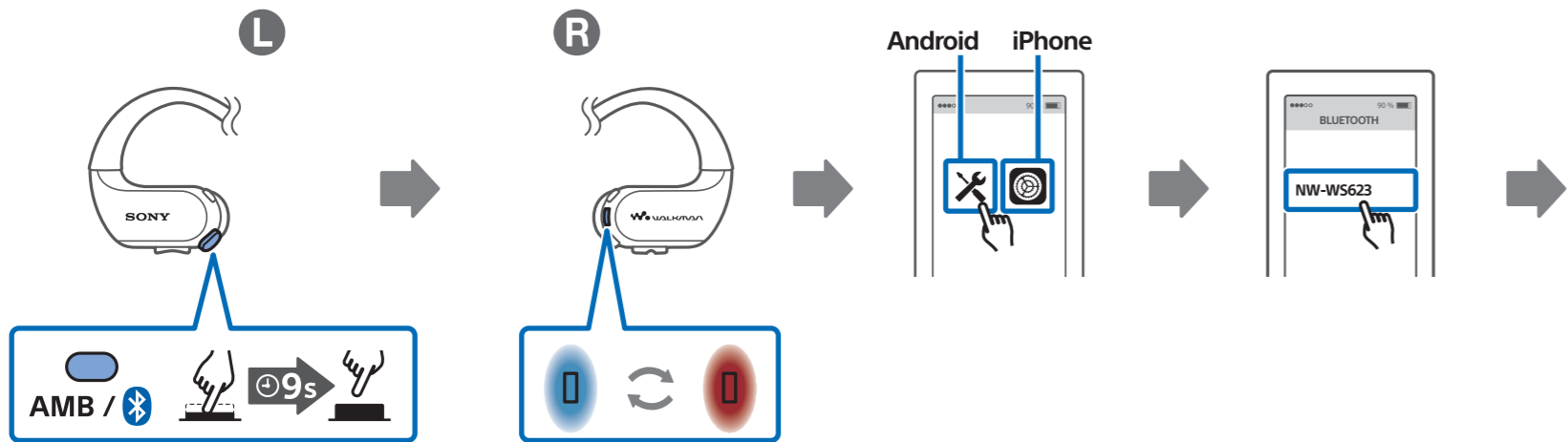
3



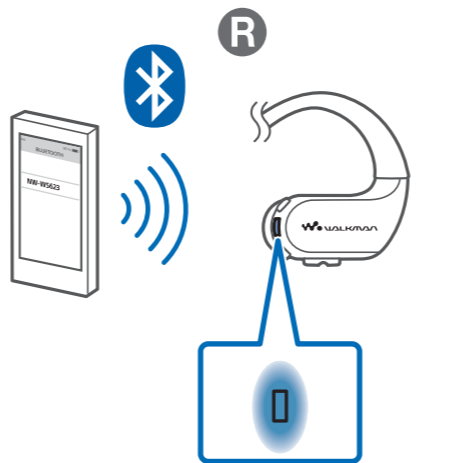
Play

Normal Repeat Shuffle Shuffle All

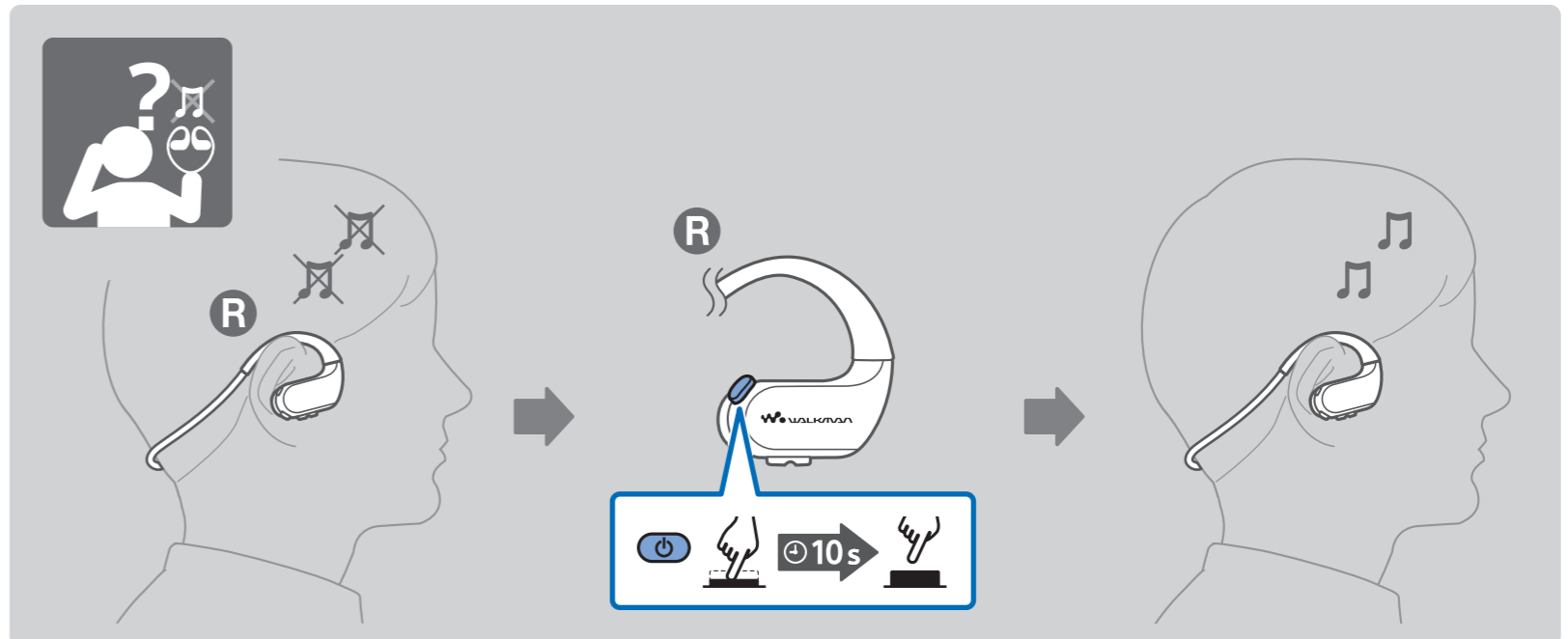
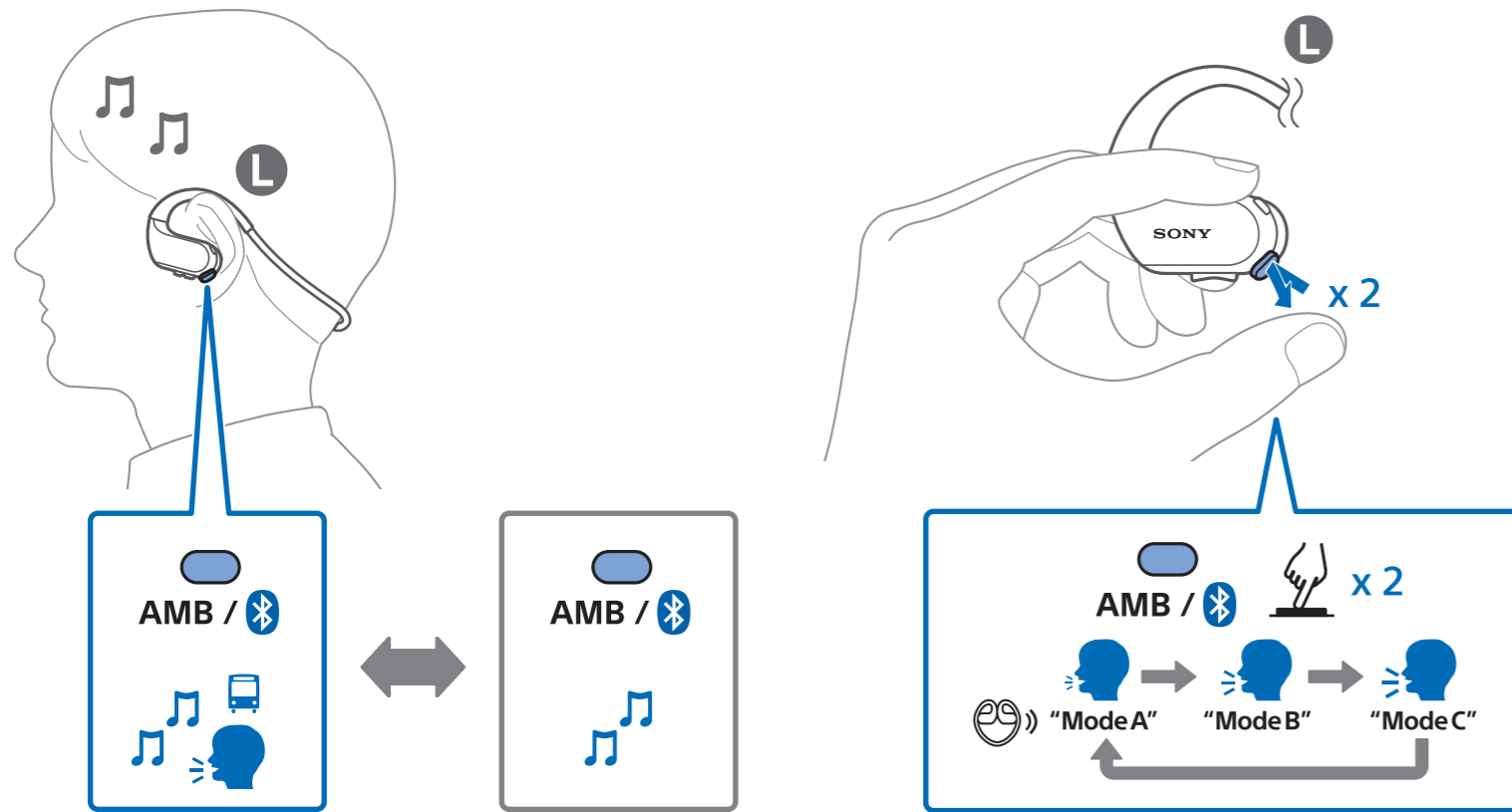
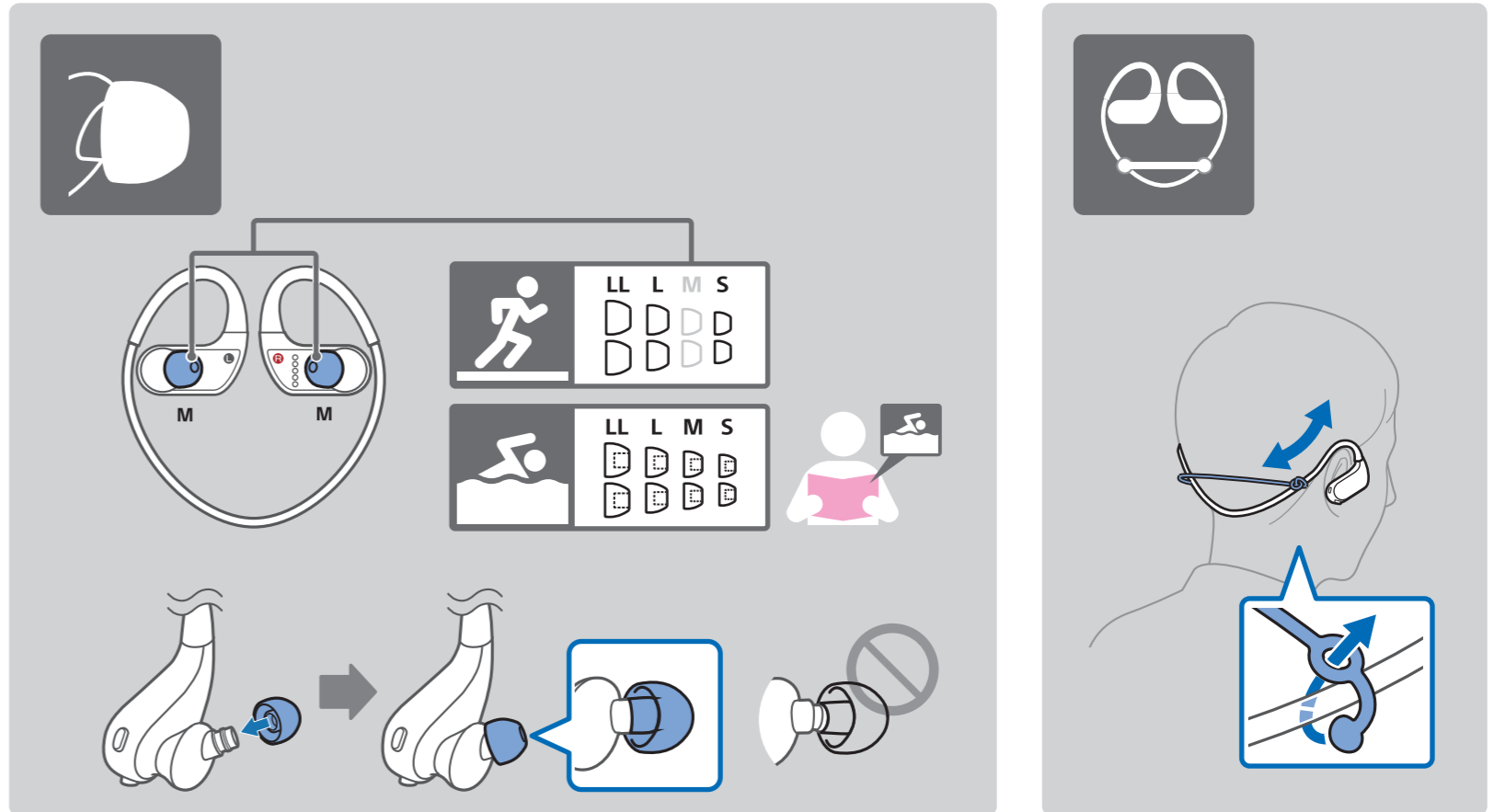




Bluetooth Pairing



Bluetooth connected. Headphone mode



**Windows**

**Media Go**  
<http://mediago.sony.com/>

**Mac**

**Content Transfer for Mac**  
<http://www.sony.net/ct-mac/>

**i**

[http://rd1.sony.net/help/dmp/nwws620/h\\_ww/](http://rd1.sony.net/help/dmp/nwws620/h_ww/)