

## Welcome

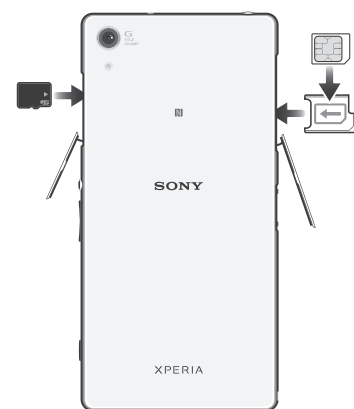
### Important Information

Before you use your device, please read the *Important Information* provided in your device regarding warranty, safety and handling information.

### Protecting your device from water and dust

Your device has IP (Ingress Protection) ratings of IP55 and IP58. These ratings mean that your device is dust resistant and is protected against low pressure water stream as well as against the effects of submersion for 30 minutes in fresh (non-saline) water up to 1.5 metres deep. Always firmly attach all covers to ensure the water and dust resistance of the device. If liquid is detected inside the device, for example, underneath one of the covers, your warranty will be void. Before using your device in water and in dusty conditions, refer to the relevant section of the User guide for your device for more detailed information. An online User guide as well as a downloadable version is available at [www.sonymobile.com/support](http://www.sonymobile.com/support).

### Assembly



Make sure you insert the micro SIM card into the micro SIM card holder before inserting it into the device. Also, don't mix up the micro SIM card and the memory card slots.

To insert the micro SIM card

Make sure you reinsert the SIM card holder in the correct orientation. When you drag the holder out, do not turn it around.

- 1 Detach the cover for the micro SIM card holder.
- 2 Using a fingernail or other similar object, drag out the SIM card holder.

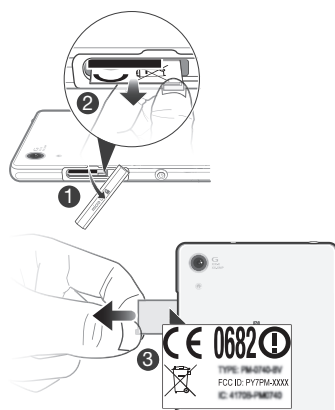
- 3 Place the micro SIM card in the SIM card holder, then reattach the micro SIM card slot cover.

If you insert the SIM card while the device is powered on, the device restarts automatically.

To insert the memory card

- 1 Remove the memory card slot cover.
- 2 Insert the memory card into the memory card slot with the gold coloured contacts facing up, then reattach the memory card slot cover.

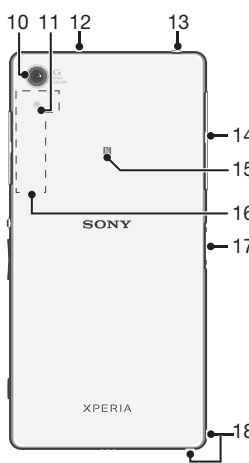
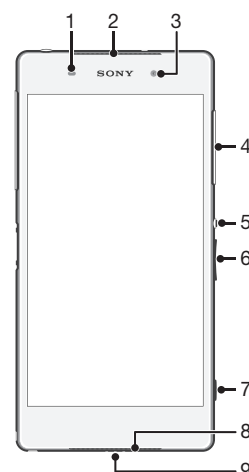
To view the CE mark and the FCC ID



- 1 Detach the cover of the SD card slot.
- 2 Place a fingernail under the right or left edge of the label tray, then drag the tray outwards. The information is displayed on the tray.

## Basics

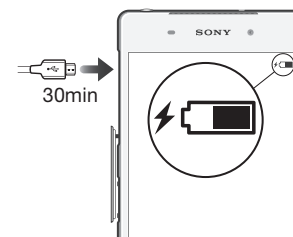
### Overview



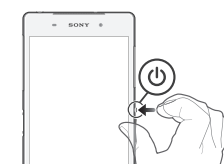
- |  |   |
|--|---|
| 1. Proximity/Light sensor                    | 10. Main camera lens                              |
| 2. Speaker/Charging light/Notification light | 11. Camera light                                  |
| 3. Front camera lens                         | 12. Second microphone                             |
| 4. Memory card slot cover                    | 13. Headset jack                                  |
| 5. Power key                                 | 14. Cover for charger/USB port and micro SIM slot |
| 6. Volume/Zoom key                           | 15. NFC™ detection area                           |
| 7. Camera key                                | 16. Wi-Fi/GPS/Bluetooth antenna area              |
| 8. Speaker                                   | 17. Charging dock connector                       |
| 9. Microphone                                | 18. Strap hole                                    |

### Turning on the device

Make sure that the battery is charged for at least 30 minutes before you turn on the device for the first time.



To turn on the device



- 1 Press and hold down the power key (⏻) until the device vibrates.
- 2 Wait a while for the device to start.

### Waking up the screen

To activate the screen

- Briefly press the power key (⏻).

To unlock the screen

- Place a finger on the middle of the screen and swipe in any direction.

## Setting up your device

### What is Android™?



Android is your device's operating system. Since Android is developed by Google™, your device is preloaded with several Google™ services, such as Google Maps™ and Google™ web search. To use some of the services provided by Google™, you need a Google account.

### Google™ account

With a Google™ account, you can use Gmail™ to send emails, Hangouts™ to chat with friends, and Google Play™ to download applications and games, music, movies and books.

To set up a Google™ account on your device

- 1 From your Home screen, tap (⋮).
- 2 Find and tap **Settings > Add account > Google**.
- 3 Follow the registration wizard to create a Google™ account, or sign in if you already have an account.

You can also sign in to or create a Google™ account from the setup guide the first time you start your device. Or you can go online and create an account at [www.google.com/accounts](http://www.google.com/accounts).

### Basic settings

The first time you start your device, a setup guide explains basic device functions and helps you enter essential settings. You can also access the setup guide later.

To access the setup guide manually

- 1 From the Home screen, tap (⋮).
- 2 Tap **Settings > Setup guide**.

## Transferring contacts using a computer

Xperia™ Transfer and Contacts Setup are applications within the PC Companion and the Sony™ Bridge for Mac computer programs that help you to collect contacts from your old device and transfer them to your new device. These applications support several device brands, including iPhone, Samsung, HTC, BlackBerry, LG, Motorola and Nokia. You need:

- An Internet-connected computer.
- A USB cable for your old device.
- A USB cable for your new Android™ device.
- Your old device.
- Your new Android™ device.

To install PC Companion on a PC

- 1 Make sure the **Install software** checkbox under **Settings > Xperia™ Connectivity > USB Connectivity** is marked.
- 2 Connect your device to a PC using a USB cable.
- 3 **Device:** Tap **Install**.
- 4 **Computer:** The PC Companion installer starts automatically after a few seconds. Follow the on-screen instructions to install PC Companion.

To install Sony™ Bridge for Mac on an Apple® Mac® computer

- 1 Make sure the **Install software** checkbox under **Settings > Xperia™ Connectivity > USB Connectivity** is marked.
- 2 Connect your device to an Apple® Mac® computer using a USB cable.
- 3 **Device:** Tap **Install**.
- 4 **Computer:** The Sony™ Bridge for Mac installer starts automatically after a few seconds. Follow the on-screen instructions to complete the installation.

To transfer contacts to your new device using a computer

- 1 Make sure that *PC Companion* is installed on the PC or that *Sony™ Bridge for Mac* is installed on the Apple® Mac® computer.
- 2 Open the PC Companion application or the Sony™ Bridge for Mac application, then click *Xperia™ Transfer* or *Contacts Setup* and follow the instructions to transfer your contacts.

## Finding your way

### Home screen

The Home screen is the starting point for using your device. You can customise it with applications, widgets, shortcuts, folders, themes, and wallpaper. You can also add extra panes.

The Home screen extends beyond the regular screen display width, so you need to flick left or right to view content in all of the Home screen's panes.



To go to the Home screen

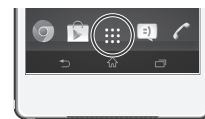
- Press

### Application screen

The Application screen, which you open from your Home screen, contains the applications that come pre-installed on your device as well as the applications you download.

The Application screen extends beyond the regular screen width, so you need to flick left and right to view all content.

To open the Application screen



- From your Home screen, tap

To open an application

- From your Home screen or the Application screen, tap the application.

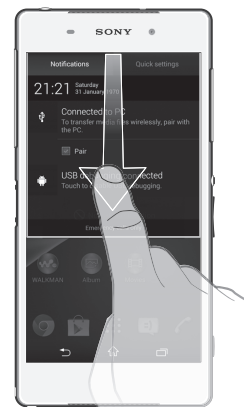
### Status and notifications



#### Checking notifications and ongoing activities

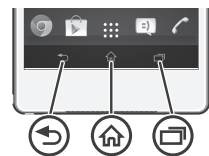
You can drag down the status bar to open the Notification panel and get more information. For example, you can use the panel to open a new message or view a calendar event. You can also open some applications that run in the background, such as the music player.

To open the Notification panel



- Drag the status bar downwards.

### Using the keys



- Back
  - Go back to the previous screen
  - Close the on-screen keypad, a dialog box, an options menu, the Notification panel, or an application



- Home
  - Go to the Home screen



- Task
  - Tap to open a window showing your most recently used applications and a small apps bar

## More basics

### Calling

To make a call by dialling

- 1 From your Home screen, tap
- 2 Find and tap **Phone**.
- 3 Enter the number of the recipient and tap

To end a call

- Tap

To answer a call



- Drag to the right across the screen.

### Multimedia and text messaging

To create and send a message

- 1 From your Home screen, tap , then find and tap .
- 2 Tap .
- 3 Tap , then tap **Add recipient** and select a contact from the Contacts list. If the recipient is not listed as a contact, enter the recipient's number manually and tap .
- 4 When you are finished adding recipients, tap **Done**.
- 5 Tap **Write message** and enter your message text.
- 6 If you want to add a media file, tap and select an option.
- 7 To send the message, tap **Send**.

### Accessing settings

View and change settings for your device from the Settings menu. The Settings menu is accessible from both the Notification panel and the Application screen.

To access your device settings

- 1 From your Home screen, tap .
- 2 Find and tap **Settings**.

## Legal information

### SonyD6543

Google Play™ is not available in all countries. Some of the services and features described in this Startup guide are not supported in all countries/regions or by all networks and/or service providers in all areas. Without limitation, this applies to the GSM International Emergency Number 112. Please contact your network operator or service provider to determine availability of any specific service or feature and whether additional access or usage fees apply.

This Startup guide is published by Sony Mobile Communications AB or its local affiliated company, without any warranty. Improvements and changes to this Startup guide necessitated by typographical errors, inaccuracies of current information, or improvements to programs and/or equipment, may be made by Sony Mobile Communications AB at any time and without notice. Such changes will, however, be incorporated into new editions of this Startup guide.

© 2013 Sony Mobile Communications AB. All rights reserved.

Publication number: 1278-4238.1

Your device has the capability to download, store and forward additional content, e.g. ringtones. The use of such content may be restricted or prohibited by rights of third parties, including but not limited to restriction under applicable copyright laws. You, and not Sony, are entirely responsible for additional content that you download to or forward from your device. Prior to your use of any additional content, please verify that your intended use is properly licensed or is otherwise authorized. Sony does not guarantee the accuracy, integrity or quality of any additional content or any other third party content. Under no circumstances will Sony be liable in any way for your improper use of additional content or other third party content.

This Startup guide may reference services or applications provided by third parties. Use of such programming or services may require separate registration with the third party provider and may be subject to additional terms of use. For applications accessed on or through a third-party website, please review such websites' terms of use and applicable privacy policy in advance. Sony does not warrant or guarantee the availability or performance of any third-party websites or offered services.

See regulatory information such as the CE mark in the label tray of the device.

All product and company names mentioned herein are the trademarks or registered trademarks of their respective owners. Any rights not expressly granted herein are reserved. All other trademarks are property of their respective owners.

Visit [www.sonymobile.com](http://www.sonymobile.com) for more information.

All illustrations are for illustration only and may not accurately depict the actual device.

This product is protected by certain intellectual property rights of Microsoft. Use or distribution of such technology outside of this product is prohibited without a license from Microsoft.

Product compliance: This product has been manufactured by or on behalf of Sony Mobile Communications, Mobilvägen, SE-221 88 Lund, Sweden. Inquiries related to product compliance based on national legislation shall be addressed to Sony Mobile Quality Officer, Sony Mobile Communications AB, Mobilvägen, SE-221 88 Lund, Sweden. For any service or guarantee matters, please refer to the contact details provided in the separate service or guarantee documents.

## Our support to you – Xperia™ Care



### User guide

A User guide for your device is available at [www.sonymobile.com/support](http://www.sonymobile.com/support).



### Support in your device

Get user support directly in your device using the Support application.

To access the Support application

- 1 From your Home screen, tap .
- 2 Find and tap .



### Support on the web

Visit [www.sonymobile.com/support](http://www.sonymobile.com/support) to access a range of support and get the most from your device.



### Customer support

Customer support – if all else fails. Access the relevant support number at [www.sonymobile.com](http://www.sonymobile.com) by clicking the Contact us link at the bottom of the page.

### Learn more

Learn more about how we can support you with Xperia™ Care at [www.sonymobile.com/support](http://www.sonymobile.com/support).