

## Important Information

Before you use your device, please read the *Important Information* provided in your device regarding warranty, safety and handling information.

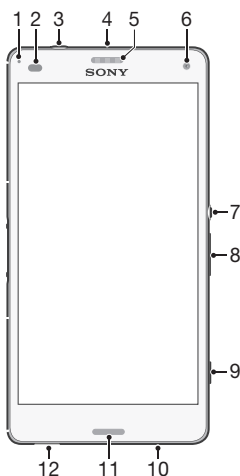
## Protecting your device from water and dust

Your device has IP (Ingress Protection) ratings of IP65 and IP68. These ratings mean that your device is dust tight and is protected against low pressure water stream as well as against the effects of submersion for 30 minutes in fresh (non-saline) water up to 1.5 metres deep.

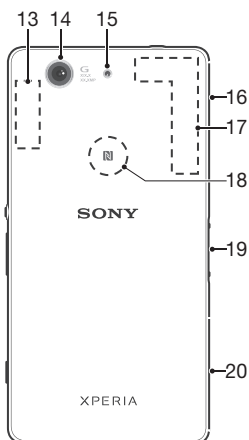
Always firmly attach all covers to ensure the water and dust resistance of the device. If liquid is detected inside the device, for example, underneath one of the covers, your warranty will be void.

Before using your device in water and in dusty conditions, refer to the relevant section of the User guide for your device for more detailed information. An online User guide as well as a downloadable version is available at [www.sonymobile.com/support](http://www.sonymobile.com/support).

## Overview



ID: ILL-14AS-FRONT-OVERVIEW

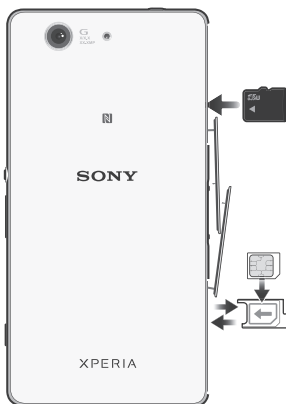


#### ID: ILL-14AS-BACK-OVERVIEW

- |                                   |   |
|-----------------------------------|---|
| 1. Charging/Notification light    | 11. Main loudspeaker                                      |
| 2. Proximity/Light sensor         | 12. Strap hole  |
| 3. Headset jack                   | 13. Wi-Fi/Bluetooth antenna area                          |
| 4. Second microphone              | 14. Main camera lens                                      |
| 5. Ear speaker/Second loudspeaker | 15. Camera light  |
| 6. Front camera lens              | 16. Cover for memory card slot and charger/USB cable port |
| 7. Power key                      | 17. GPS antenna area                                      |
| 8. Volume/Zoom key                | 18. NFC™ detection area                                   |
| 9. Camera key                     | 19. Charging dock connector                               |
| 10. Main microphone               | 20. Nano SIM card slot cover                              |

## Assembly

! Your device only supports nano SIM cards.



#### ID: ILL-14AS-INSERT-SIM-AND-MEM-CARD

- ! Make sure you insert the nano SIM card into the nano SIM card holder before inserting it into the device. Also, don't confuse the nano SIM card slot with the memory card slot.

### To insert the nano SIM card

- ! If you insert the nano SIM card while the device is powered on, the device restarts automatically.
- 1 Detach the cover for the nano SIM card holder.
  - 2 Using a fingernail or other similar object, drag out the nano SIM card holder.
  - 3 Place the nano SIM card in the nano SIM card holder, then reinsert the holder.
  - 4 Re-attach the cover.
- ! Make sure you reinsert the nano SIM card holder in the correct orientation. When you drag the holder out to insert the nano SIM card, do not turn the holder around.

### To insert the memory card

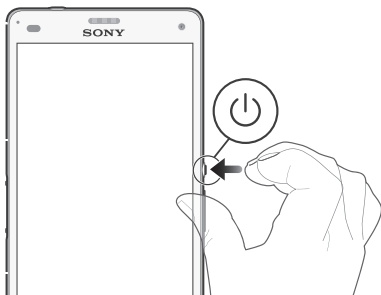
- 1 Remove the memory card slot cover.
- 2 With the gold coloured contacts facing down, insert the memory card into the memory card slot, then re-attach the memory card slot cover.

## Basics

### Turning on the device

Make sure that the battery is charged for at least 30 minutes before you turn on the device for the first time.

### To turn on the device



#### ID: ILL-14AS-ON

- 1 Press and hold down the power key (ID: KEY-AND-POWER-K90) until the device vibrates.
- 2 Wait a while for the device to start.

### Waking up the screen

#### To activate the screen

- Briefly press the power key (ID: KEY-AND-POWER-K90).
  - If Tap to wake up mode is enabled, double-tap the screen.
- ! To enable Tap to wake up mode, go to the Home screen, then tap (ID: ICN-AND-APP-TRAY) > Settings [settings\_label] > Display [display\_settings\_title] > Tap to wake up [touch\_to\_wake\_up].

## Setting up your device

### Setup guide

The first time you start your device, a setup guide opens to help you configure basic settings, sign in to some accounts (for example, your Google™ account), and personalise your device. You can also manually access the setup guide at a later stage.

### To access the setup guide manually

- 1 From the Home screen, tap  ID: ICN-AND-APP-TRAY.
- 2 Tap  ID: ICN-SONY-APP-SETTINGS > Setup guide [setupguide\_settings\_title] .

### Accessing settings

View and change settings for your device from the Settings menu. The Settings menu is accessible from both the Application screen and the Quick settings panel.

### To access your device settings

- 1 From your Home screen, tap  ID: ICN-AND-APP-TRAY.
- 2 Find and tap  ID: ICN-SONY-APP-SETTINGS.

## Transferring your contacts

Xperia™ Transfer is an application within the PC Companion and the Sony Bridge for Mac computer programs that helps you to collect contacts from your old device and transfer them to your new device. Xperia™ Transfer supports several device brands, including iPhone, Samsung, HTC, BlackBerry, LG, and Nokia.

You need:

- An Internet-connected computer.
- A USB cable for your old device.
- A USB cable for your new Android™ device.
- Your old device.
- Your new Android™ device.

### To transfer contacts to your new device

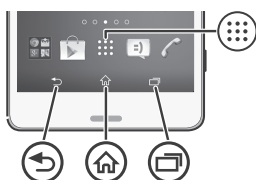
- 1 Search and download PC Companion (on a PC) or Bridge for Mac (on a Mac computer) from [www.sonymobile.com](http://www.sonymobile.com) if the application is not already installed.
- 2 After successful installation, open the PC Companion application or the Sony Bridge for Mac application, then click *Xperia™ Transfer* and follow the relevant instructions to transfer your contacts.

## Finding your way



ID: SCR-14AS-HOMESCREEN

## Using the keys



ID: ILL-14AS-HARDWARE-KEYS

 ID: KEY-AND-BACK

Back navigation key

- Go back to the previous screen within an application or close the application.

 ID: KEY-AND-HOME

Home navigation key

- Exit an application and go back to the Home screen.

 ID: KEY-OPEN-RECENT-APPS

Task navigation key

- Open the recently used applications window and the small apps bar.

 ID: ICN-AND-APP-TRAY

Application screen

- Open the Application screen.

## Basic applications and settings

 ID: ICN-SONY-APP-DIALER

Make phone calls by dialling the number manually or by using the smart dial function.

 ID: ICN-SONY-APP-MESSAGING

Use the Messaging application to send and receive text and multimedia messages.

 ID: ICN-SONY-APP-MARKET-PLACE

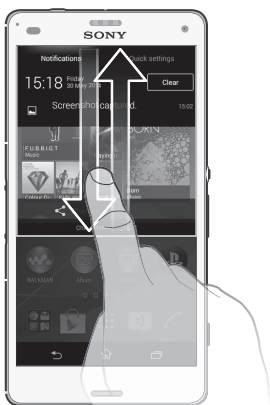
Go to Google Play™ to download free and paid applications for your device.

**ID: ICN-SONY-APP-SETTINGS**

Optimise the device settings to suit your own requirements.

## Status and notifications

To open or close the Notification panel



**ID: SCR-14AS-DOWN-UP-NOTIFICATION-PANEL**

- Drag down two fingers instead of one to open the Quick settings panel instead.

## Support on the web



**ID: ILL-SERVICE**

Visit [www.sonymobile.com/support](http://www.sonymobile.com/support) to access a range of support options for your device, including downloads, troubleshooting tips and a User guide.

## Legal information

### **Sony D5803/D5833**<sub>[Textvar-Product]</sub> <sub>[Textvar-Phone-type]</sub>

Publication number: 1286-1999.1 <sub>[Textvar-Partnr-i-ROW-basic]</sub>

This Startup guide is published by Sony Mobile Communications Inc. or its local affiliated company, without any warranty. Improvements and changes to this Startup guide necessitated by typographical errors, inaccuracies of current information, or improvements to programs and/or equipment, may be made by Sony Mobile Communications Inc. at any time and without notice. Such changes will, however, be incorporated into new editions of this Startup guide. All illustrations are for illustration only and may not accurately depict the actual device.

See regulatory information such as the CE mark in the relevant label tray in the device.

All product and company names mentioned herein are the trademarks or registered trademarks of their respective owners. Any rights not expressly granted herein are reserved. Visit [www.sonymobile.com/us/legal/](http://www.sonymobile.com/us/legal/) for more information.

Product compliance: This product has been manufactured by or on behalf of Sony Mobile Communications Inc., 1-8-15 Konan, Minato-ku, Tokyo 108-0075, Japan. Inquiries related to product compliance based on national legislation shall be addressed to Sony Mobile Quality Office, Sony Mobile Communications Inc., 1-8-15 Konan, Minato-ku, Tokyo 108-0075, Japan. For any service or guarantee matters, please refer to the contact details provided in the separate service or guarantee documents.

© 2014 Sony Mobile Communications Inc. All rights reserved.

### To view the CE mark and the FCC ID



#### **ID: ILL-14AS-CEMARK**

- 1 Detach the cover for the nano SIM card holder.
- 2 Insert the tip of an unfolded paper clip (or a similar object with a long, fine tip) into the hole in the label tray, then drag the tray outwards. The information is displayed on the tray.

**SONY**<sup>®</sup>

## Startup guide

Xperia™ Z3 Compact  
D5803/D5833

XPERIA

Sony Mobile Communications Inc.  
1-8-15 Konan, Minato-ku, Tokyo 108-0075, Japan  
[www.sonymobile.com](http://www.sonymobile.com)