

SONY[®]

User guide

Bluetooth Keyboard
BKB50

Contents

Basics.....	3
General overview.....	3
Bluetooth® notification light status.....	3
Battery notification light status.....	3
Charging the keyboard.....	3
Turning on and off.....	4
Getting started.....	5
Setting up the keyboard.....	5
Assembly.....	5
Support on the web.....	6
Legal information.....	7
Declaration of Conformity	8

Basics

General overview

The **BKB50** Bluetooth® keyboard helps you use your like a PC and is convenient when you are on the move. You can pair the **BKB50** easily with the tablet using the NFC function. Once set up, the **BKB50** can detect when your tablet is open or closed and can switch off, if necessary, to save power.



Bluetooth® notification light status

Flashing rapidly	The keyboard is searching for previously connected devices to pair with.
Flashing slowly	Pairing mode – the keyboard is available for pairing with other devices.
No light	The keyboard is paired with a device or is in idle mode.

- 💡 When several devices are available for pairing, the keyboard tries to pair with the most recently connected device.

Battery notification light status

Red light	Battery is charging.
Flashing slowly	Battery level is below 15 percent.
No light	Charging is complete or no charger is plugged in.

Charging the keyboard

To charge the keyboard

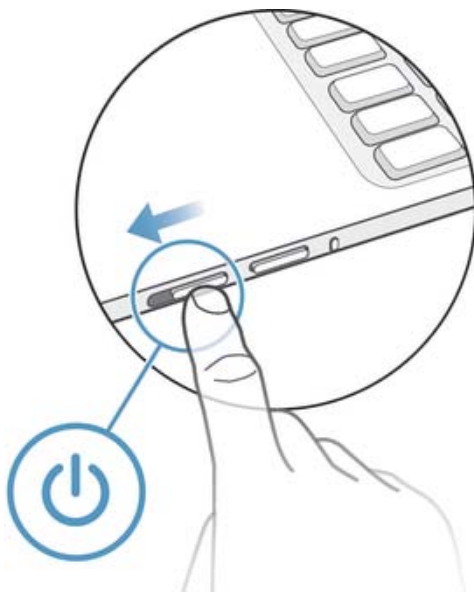
- ! Charge the keyboard for 4 hours before using it for the first time. Use a regular charger only.
When the keyboard is charging, the NFC function is unavailable.



- 1 Plug the charger for your Android phone or tablet into a power outlet.
 - 2 Plug one end of the USB cable into the charger.
 - 3 Plug the other end of the USB cable into the charging port on your keyboard.
- ! A micro USB cable and charger are not included at purchase.

Turning on and off

To turn on the keyboard



- Slide the power switch downwards.

Getting started

Setting up the keyboard

The keyboard uses Bluetooth® technology to communicate with your Android device. To establish a Bluetooth® connection between the two devices, you can either use automatic NFC-assisted pairing or you can pair the devices manually.

To automatically pair the keyboard with an Android™ device using NFC

- 1 Android™ device: Make sure that the NFC function is turned on and that the screen is active and unlocked.
- 2 Keyboard: Turn on your keyboard.
- 3 Place the Android™ device over the NFC detection area of your keyboard so that the NFC detection area of each device touches the other. The devices should now connect to each other automatically.

! The NFC function is unavailable when the keyboard is supplied power via a USB cable.

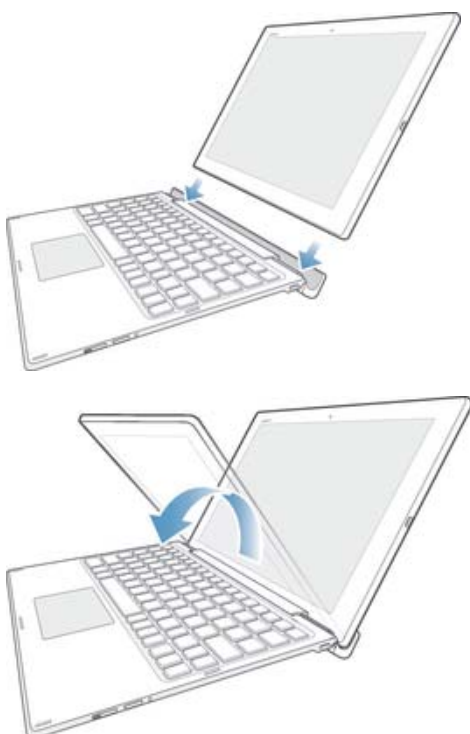
To manually pair the keyboard with an Android™ device using Bluetooth®

- 1 Keyboard: Make sure the charger is disconnected from the keyboard.
- 2 Keyboard: Turn on the keyboard. The keyboard enters pairing mode automatically and the Bluetooth® notification light flashes rapidly.
- 3 Android™ device: Turn on the Bluetooth® function, then search for and connect to the keyboard.

! If the Bluetooth® notification light stops flashing before you get time to pair your mobile device with the keyboard, hold down the Pair key until the Bluetooth® notification light flashes and then try again.

Assembly

To insert the tablet



- 1 Insert the bottom edges of the tablet firmly into the grooves of the keyboard.
- 2 Adjust angle of the tablet for a suitable view.

Support on the web



Visit www.sonymobile.com/support to access a range of support options for your device, including downloads, troubleshooting tips and a User guide.

Legal information

Sony BKB50



Prior to use, please read the *Important information* leaflet separately provided.

This User guide is published by Sony Mobile Communications Inc. or its local affiliated company, without any warranty. Improvements and changes to this User guide necessitated by typographical errors, inaccuracies of current information, or improvements to programs and/or equipment, may be made by Sony Mobile Communications Inc. at any time and without notice. Such changes will, however, be incorporated into new editions of this User guide.

All rights reserved.

©2015 Sony Mobile Communications Inc.

Interoperability and compatibility among Bluetooth® devices varies. Device generally supports products utilizing Bluetooth spec. 1.2 or higher, and Headset or Handsfree profile.

Sony is the trademark or registered trademark of Sony Corporation. Bluetooth is the trademark of the Bluetooth (SIG) Inc. and is used under license. All other marks are the property of their respective owners. All rights reserved.

All product and company names mentioned herein are the trademarks or registered trademarks of their respective owners. Any rights not expressly granted herein are reserved. All other trademarks are property of their respective owners.

Visit www.sonymobile.com for more information.

All illustrations are for illustration only and may not accurately depict the actual accessory.

Declaration of Conformity

We, Sony Mobile Communications AB of

Nya Vattentorget

SE-221 88 Lund, Sweden

declare under our sole responsibility that our product

Sony type

and in combination with our accessories, to which this declaration relates is in conformity with the appropriate standards following the provisions of, Radio Equipment and Telecommunication Terminal Equipment directive 1999/5/EC.

CE 0682



Pär Thuresson,
Quality Officer, SVP, Quality & Customer Services

FCC Statement

This device complies with Part 15 of the FCC rules. Operation is subject to the following two conditions: (1) This device may not cause harmful interference, and (2) This device must accept any interference received, including interference that may cause undesired operation.

Any change or modification not expressly approved by Sony may void the user's authority to operate the equipment.

This equipment has been tested and found to comply with the limits for a Class B digital device, pursuant to Part 15 of the FCC Rules. These limits are designed to provide reasonable protection against harmful interference in a residential installation. This equipment generates, uses and can radiate radio frequency energy and, if not installed and used in accordance with the instructions, may cause harmful interference to radio communications. However, there is no guarantee that interference will not occur in a particular installation.

If this equipment does cause harmful interference to radio or television reception, which can be determined by turning the equipment off and on, the user is encouraged to try to correct the interference by one or more of the following measures:

- Reorient or relocate the receiving antenna.
- Increase the separation between the equipment and receiver.
- Connect the equipment into an outlet on a circuit different from that to which the receiver is connected.
- Consult the dealer or an experienced radio/TV technician for help.

Industry Canada Statement

This device complies with RSS-210 of Industry Canada.

Operation is subject to the following two conditions: (1) this device may not cause interference, and (2) this device must accept any interference, including interference that may cause undesired operation of the device.

This Class B digital apparatus complies with Canadian ICES-003.

Cet appareil numérique de la classe B est conforme à la norme NMB-003 du Canada.

Avis d'industrie Canada

Le présent appareil est conforme aux CNR d'Industrie Canada applicables aux appareils radio exempts de licence.

L'exploitation est autorisée aux deux conditions suivantes: (1) l'appareil ne doit pas produire de brouillage, et, and (2) l'utilisateur de l'appareil doit accepter tout brouillage radioélectrique subi, même si le brouillage est susceptible d'en compromettre le fonctionnement.