

step 1 Hookup

Quick Start Guide RDR-VX515

Follow the three steps below to connect, setup and make recordings on your VCR-DVD recorder.

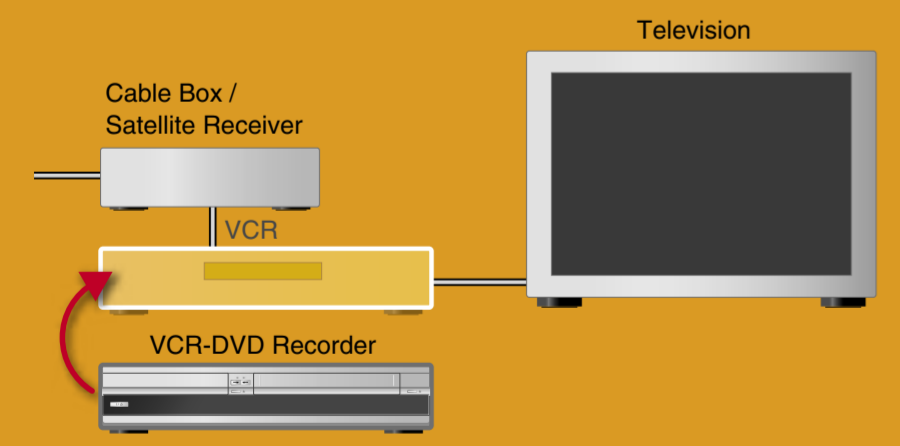
- step 1 Hookup
- step 2 Setup
- step 3 Record!

©2005 Sony Corporation
Printed in China

2-636-468-11(1)
AK68-00731A

Before hookup

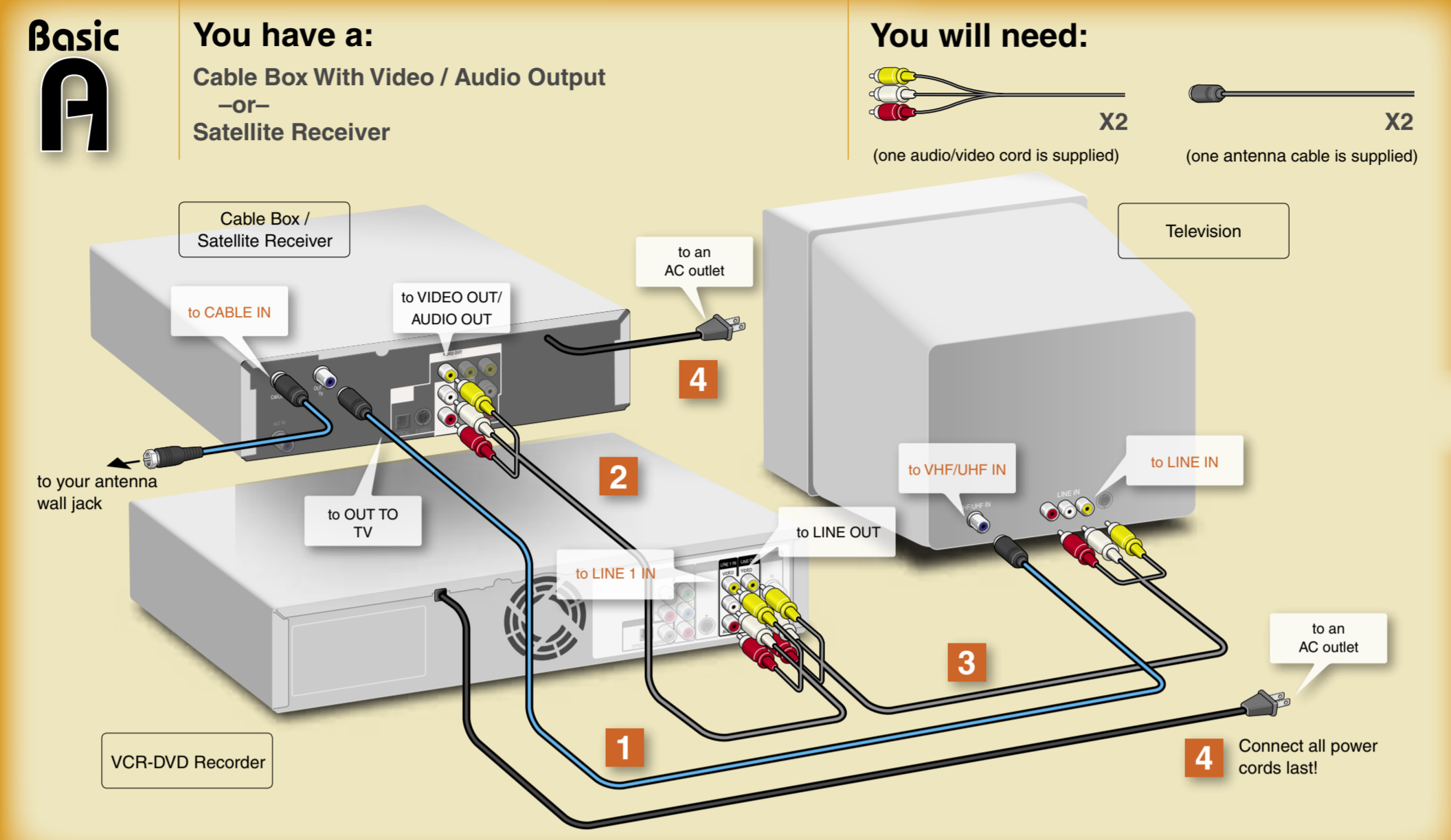
1 Disconnect your VCR
If you have been using a VCR, you do not need to disconnect all of your equipment. Just disconnect your VCR from the other equipment and connect this VCR-DVD recorder in its place.



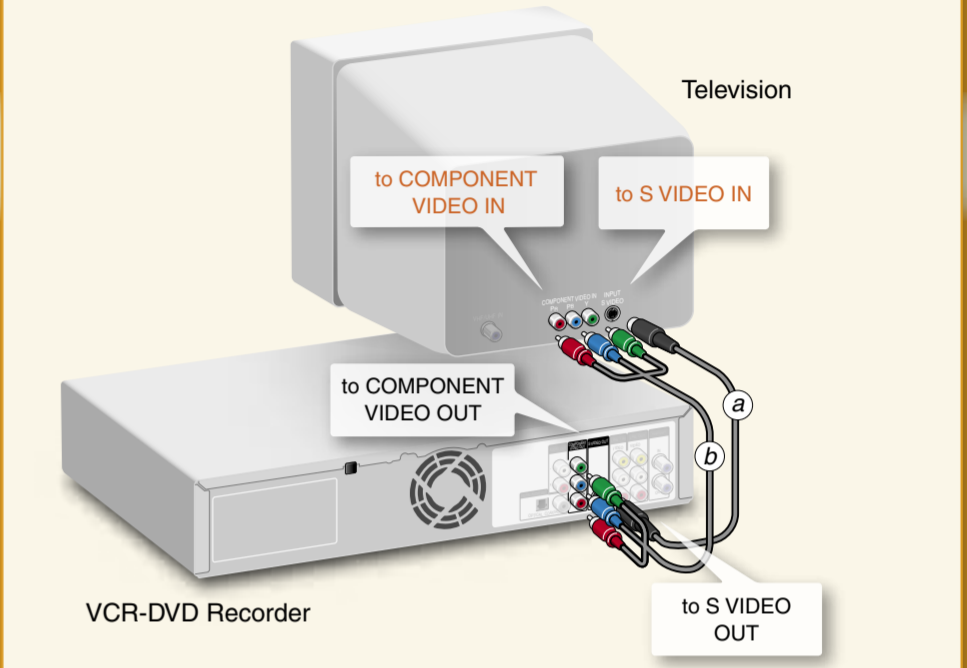
2 Select a connection
Select one of the following two types of basic connections according to the type of equipment you have.

- Basic A**
Cable Box With Video/Audio Output
- or -
Satellite Receiver
- Basic B**
Cable Box Without Video/Audio Output
(or cable with no cable box)
- or -
Antenna (no cable TV)

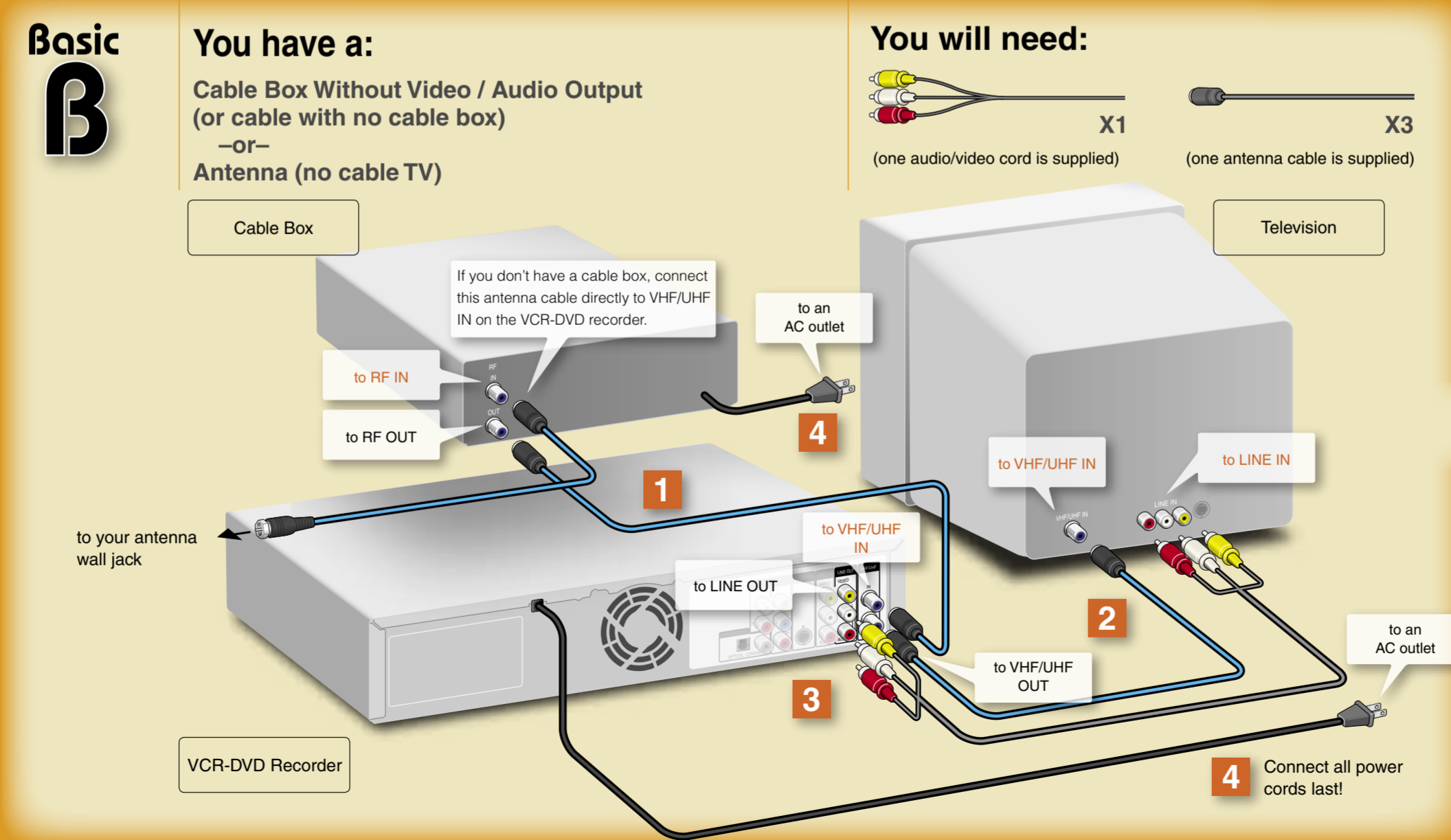
Proceed to Step 1 and begin!



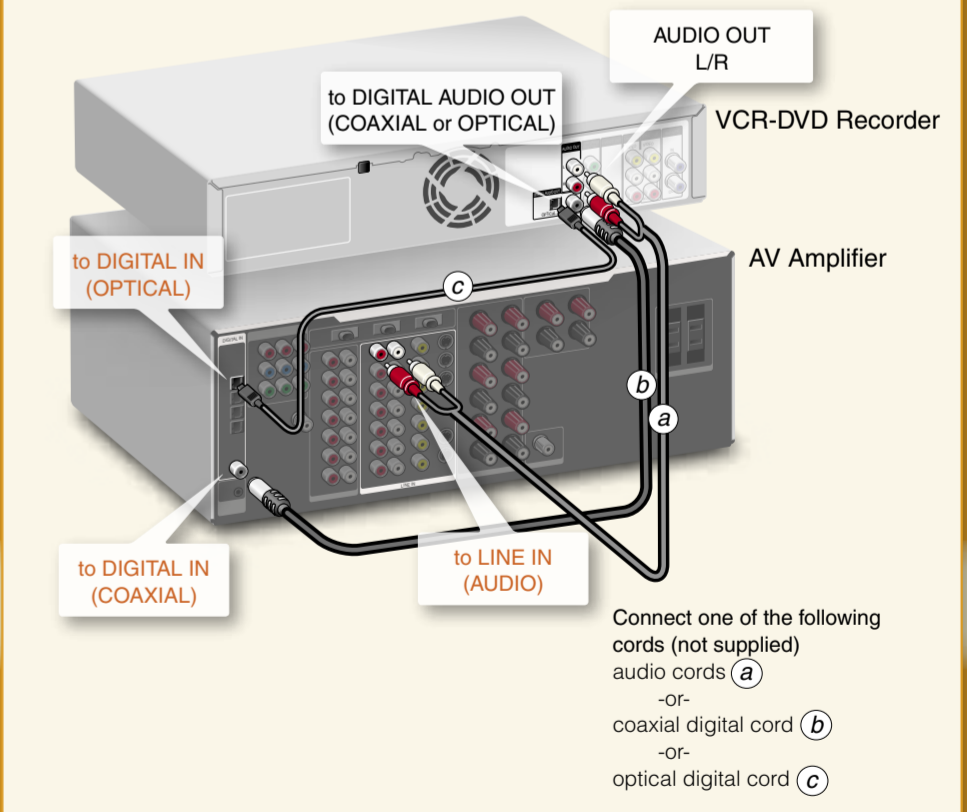
Optional Connecting an S video cord or a component video cord



(a) Connect an S video cord (not supplied). You will enjoy high quality images.
-or-
(b) Connect the COMPONENT VIDEO OUT jacks using a component video cord (not supplied) or three video cords (not supplied) of the same kind and length. You will enjoy accurate color reproduction and high quality images. If your TV accepts progressive 480p format signals, you must use this connection and then set "Progressive" of "Video" to "On" in the Setup menu. For further explanations, see "Video Settings (Video)" in the Operating instructions.



Connecting an AV amplifier (receiver)



Connecting to an AV amplifier (receiver) with digital cords will enable you to listen to Dolby Digital or DTS surround effects. For further explanations, see "Connecting to Your AV Amplifier (Receiver)" in the Operating Instructions.

step2 Setup

The Easy Setup display automatically appears on your TV screen when you turn on your recorder for the first time. Follow the steps below to make the minimum number of basic adjustments to use the recorder. If you make a mistake, press **↶** RETURN.

1 Turn on your TV and any other connected equipment such as your cable box or satellite receiver.

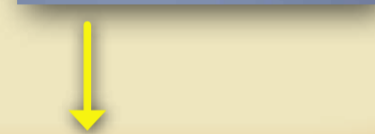
2 Press **I/⏻** on the VCR-DVD recorder.

3 Switch the input selector on your TV so that the signal from the recorder appears on your TV screen.

If "Initial setting necessary to operate the DVD recorder will be made. You can change them later using setup." does not appear on your TV screen, press SYSTEM MENU, select "Setup" and then select "Easy Setup."

4 Press ENTER.

5 Press **↑/↓** to select a language for the on-screen display, then press ENTER.



6 Press **↑/↓** to select "Auto" and press ENTER.

The recorder will automatically search for a channel that carries a time signal when you turn off the recorder after finishing Easy Setup. If no broadcaster in your area is sending a time signal, select "Manual," and press ENTER. Press **↑/↓** to set the month and press **→**. Set the day, year, hour, minutes, and AM/PM in the same way. The day of the week is set automatically.

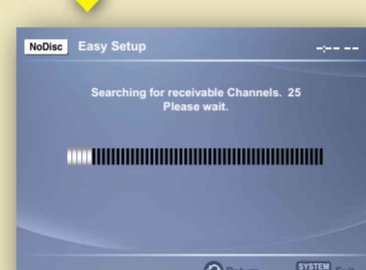


7 Press **↑/↓** to select whether or not you have a cable connection, and press ENTER.

If you use an antenna only (no cable TV), select "Antenna." For all other connections, select "Cable."



8 The Tuner Preset function starts searching for all receivable channels. This may take a couple of minutes.



9 Press **↑/↓** to select the type of TV you have, then press ENTER.

If you have a wide-screen TV, select "16:9." If you have a standard TV, select either "4:3 Letter Box" (shrink to fit) or "4:3 Pan Scan" (stretch to fit). This will determine how "wide-screen" images are displayed on your TV.



10 Press **↑/↓** to select the type of Dolby Digital signal you want to send to your AV amplifier (receiver), then press ENTER.

If your AV amplifier (receiver) has a Dolby Digital decoder, select "Dolby Digital." If not, select "D-PCM."

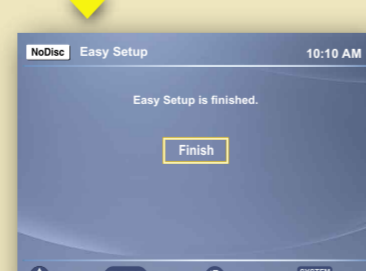


11 Press **↑/↓** to select the type of DTS signal you want to send to your AV amplifier (receiver), then press ENTER.

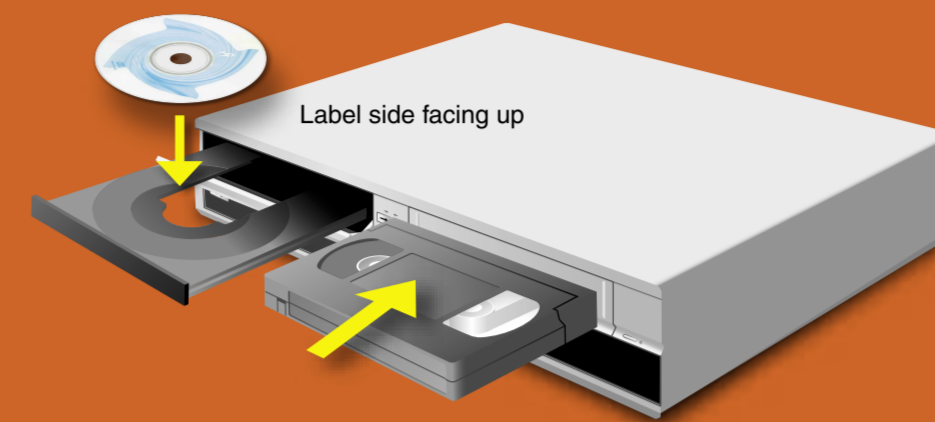
If your AV amplifier has a DTS decoder, select "On." If not, select "Off."



12 When "Finish" appears, press ENTER to complete Easy Setup.



step3 Record!



Insert a DVD Disc

1 Press DVD to operate the DVD recorder.

2 Press **▲** OPEN/CLOSE and place a recordable DVD on the disc tray.

3 Press **▲** OPEN/CLOSE again to close the disc tray.

"LOAD" will appear for about a minute in the VCR-DVD recorder's front panel display. See "Quick Guide to Disc Types" in the Operating Instructions for more details about the differences between disc types.

hint
Don't know what's going on?

Look at your TV screen, not the front panel display. Messages explaining the current status of the DVD recorder will appear on your TV screen. Note that the remote does not work while "LOAD" is flashing, so be patient!

Record a TV Program

The following explains how to record a current TV program. For instructions on how to set the timer, see the timer recording sections in the Operating Instructions.

1 Press DVD to record to a DVD disc.
Or, press VIDEO to record to a VHS tape.

2 Press CH+/- to select a channel.

The channel number appears in the front panel display.

- If you connected your cable box or satellite receiver to the Line 1 input of the VCR-DVD recorder, press INPUT SELECT until "LINE1" appears in the front panel display. Then select a channel on your cable box or satellite receiver.
- If you connected your cable box to the VCR-DVD recorder's antenna input jack, select channel 2, 3 or 4, whichever channel is used to receive the signal from the cable box. Then select a channel on your cable box.

Insert a VHS Tape

1 Press VIDEO to operate the VCR.

2 Insert a tape with its safety tab in place.

3 Press REC MODE repeatedly to select the recording mode.

When recording to a DVD disc: HQ, HSP, SP, LSR, LP, EP, SLP, or SEP HQ offers the best quality picture, but with the shortest recording time. Recording time increases with each successive mode, but the picture quality gradually deteriorates.

When recording to a VHS tape: SP or EP EP (Extended Play) provides recording time three times as long as SP (Standard Play). However, SP produces better picture and audio quality.

hint
How much disc space or tape length do I have?

You can check information about the disc or tape, such as the remaining disc space or remaining tape length, by pressing DISPLAY while the disc or tape is inserted.

4 Press **●** REC.

The recorder starts recording. To stop recording, press **■** STOP.



Playback the Recorded DVD Disc

1 Press DVD to operate the DVD recorder.

2 Press TITLE LIST.

The Title List menu appears.



3 Press **↑/↓** to select the title you want to play and press ENTER. The sub-menu appears.



4 Press **↑/↓** to select "Play" and press ENTER.

Playback starts from the beginning of the title.

Playback the Recorded VHS Tape

1 Press VIDEO to control the VCR.

2 Press **◀/▶** to find the point you want to start playback.

For further explanations, see "VCR Playback" in the Operating Instructions.

3 Press **▷** PLAY.

Playback starts.

Now that you have familiarized yourself with the VCR-DVD recorder, try the functions below by following the explanations in the Operating Instructions.

Copy a VHS tape to a DVD or a DVD to a VHS tape

See "Dubbing From a VHS Tape to a DVD," or "Dubbing From a DVD to a VHS Tape."