

step 1 Hookup

Quick Start Guide RDR-VX530

Follow the three steps below to connect, setup and make recordings on your VCR-DVD recorder.

step 1 Hookup

step 2 Setup

step 3 Record!

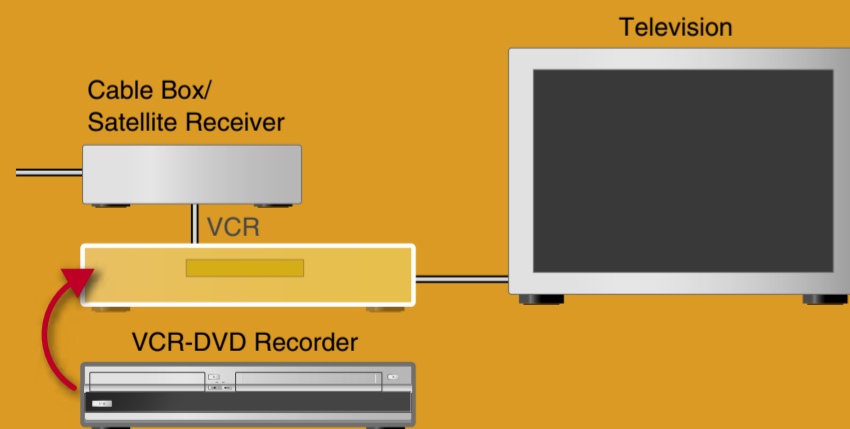
©2006 Sony Corporation
Printed in China

2-672-435-11(1)
AK68-00990A

Before hookup

1 Disconnect your VCR

If you have been using a VCR, you do not need to disconnect all of your equipment. Just disconnect your VCR from the other equipment and connect this VCR-DVD recorder in its place.



2 Select a connection

Select one of the following two types of basic connections according to the type of equipment you have.

Cable Box With Video/Audio Output
- or -
Satellite Receiver



Cable Box Without Video/Audio Output
(or cable with no cable box)
- or -
Antenna (no cable TV)

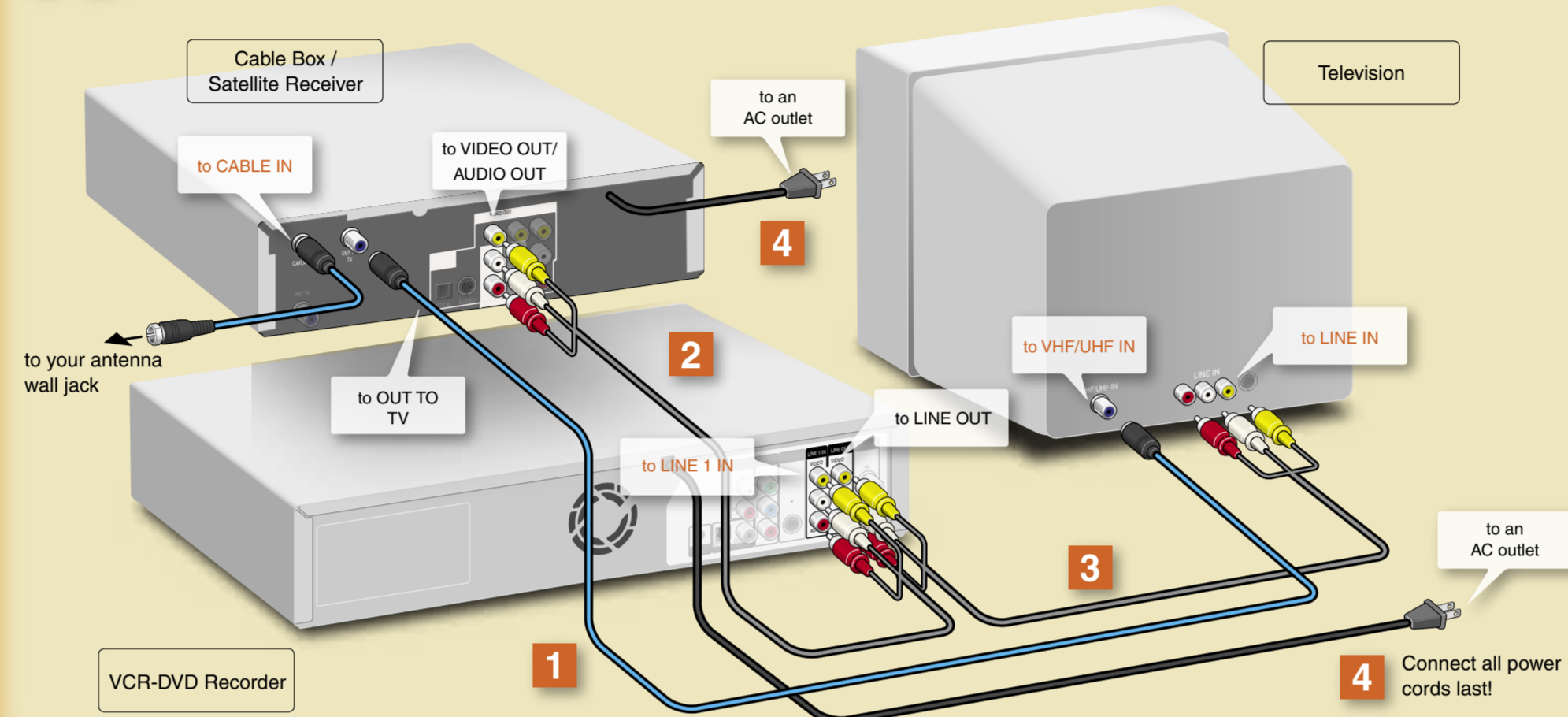
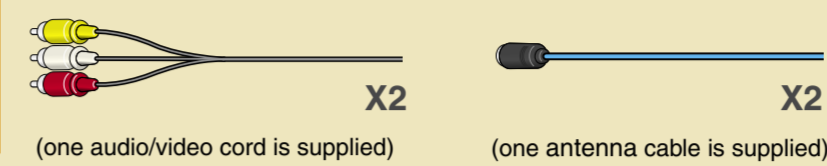


Proceed to step 1 and begin!

Basic A

You have a:
Cable Box With Video / Audio Output
-or-
Satellite Receiver

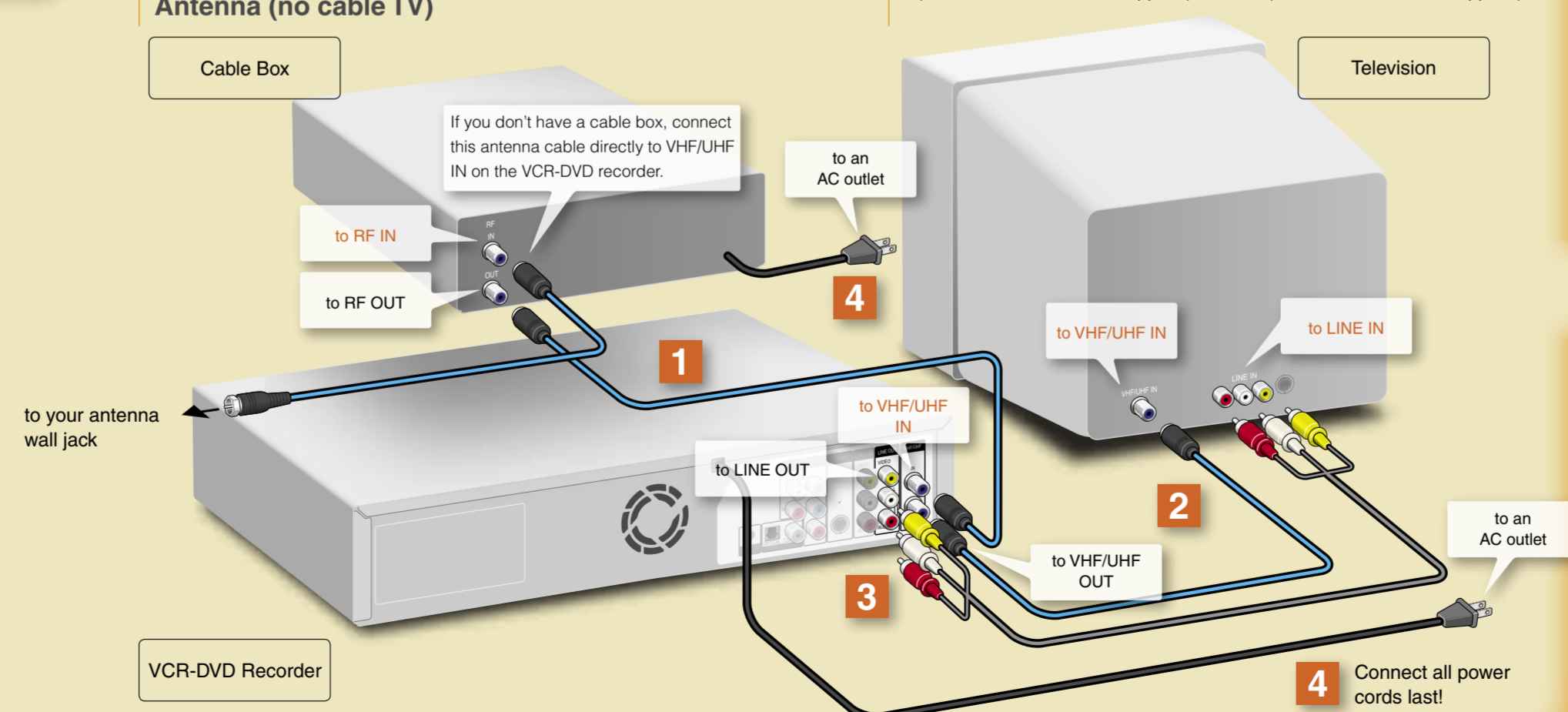
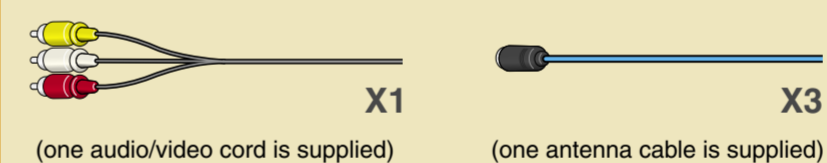
You will need:



Basic B

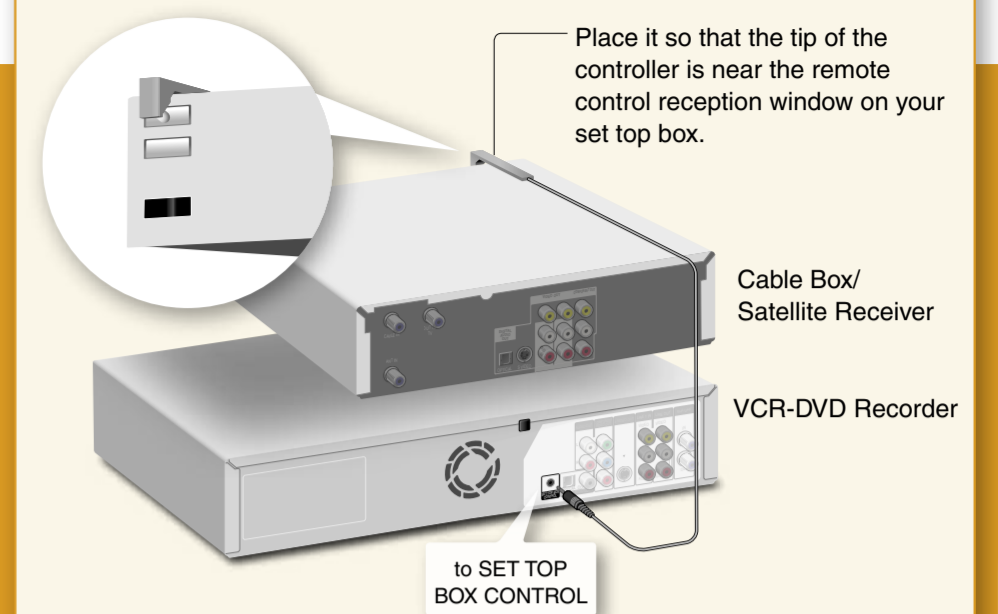
You have a:
Cable Box Without Video / Audio Output
(or cable with no cable box)
-or-
Antenna (no cable TV)

You will need:



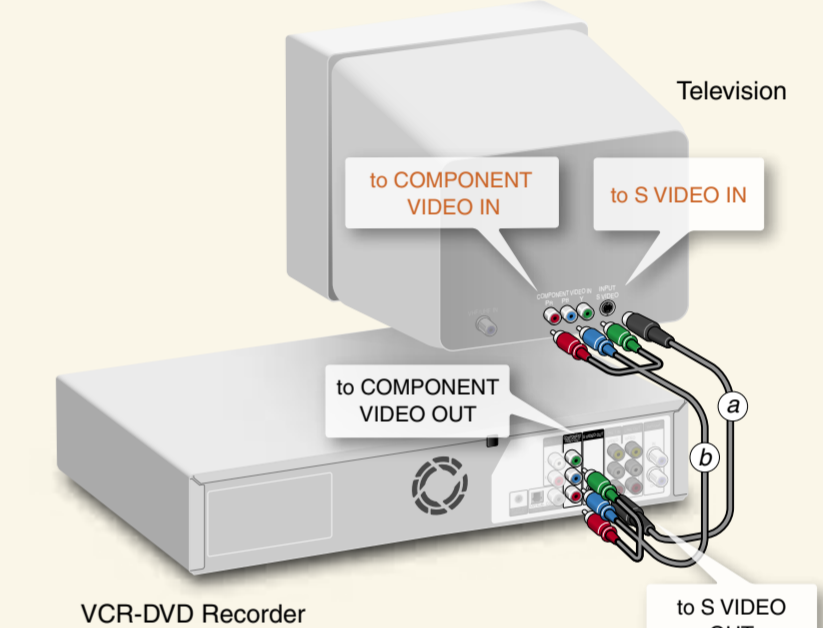
Optional

Connecting the Set Top Box controller



You can have the recorder control channels on the cable box or satellite receiver for timer recording. Connect the Set Top Box controller (supplied), and select "Yes" in step 7 of Setup on the next page.

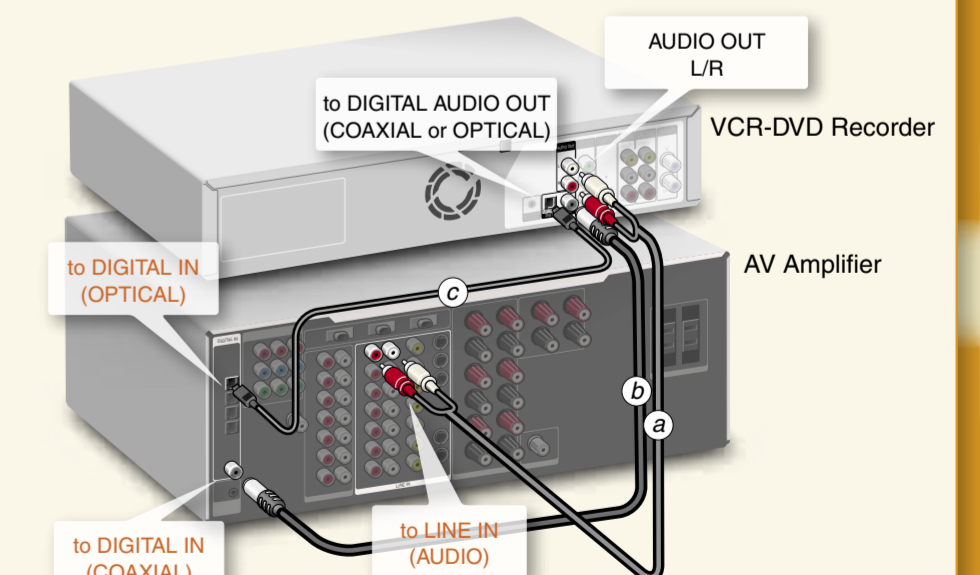
Connecting an S video cord or a component video cord



Connect one of the following cords (not supplied) instead of the video cord. (One audio/video cord supplied.) You will enjoy high quality images.

- a S video cord
 - or-
 - b Component video cords
- If your TV accepts progressive 480p format signals, you must use this connection. For further explanations, see "Video Settings (Video)" in the Operating Instructions.

Connecting an AV amplifier (receiver)



Connect one of the following cords (not supplied).

- a audio cords
- or-
- b coaxial digital cord
- or-
- c optical digital cord

Connecting to an AV amplifier (receiver) with digital cords will enable you to listen to Dolby Digital or DTS surround effects. For further explanations, see "Connecting to Your AV Amplifier (Receiver)" in the Operating Instructions.

step2 Setup

The Easy Setup display automatically appears on your TV screen when you turn on your recorder for the first time. Follow the steps below to make the minimum number of basic adjustments to use the recorder. If you make a mistake, press **↶** RETURN.

1 Turn on your TV and any other connected equipment such as your cable box or satellite receiver.

2 Press **I/O** on the VCR-DVD recorder.

3 Switch the input selector on your TV so that the signal from the recorder appears on your TV screen.



If "Initial setting necessary to operate the DVD recorder will be made. You can change them later using setup." does not appear on your TV screen, select "Easy Setup" from "Setup" in the System Menu.

4 Press **ENTER**.

5 Press **↑/↓** to select a language for the on-screen display, then press **ENTER**.

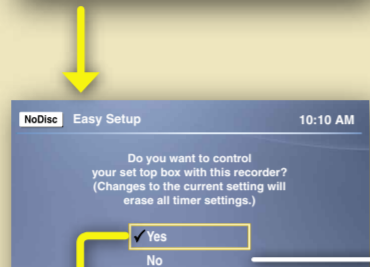


6 Press **↑/↓** to select "Manual" and press **ENTER**.

Press **↑/↓** to set the month and press **→**. Set the day, year, hour, minutes, and AM/PM in the same way. Then press **ENTER**.



7 Press **↑/↓** to select whether or not you want to use the Set Top Box control function, then press **ENTER**.



8a Press the number buttons to enter the brand code of your cable box or satellite receiver. Then select "OK" and press **ENTER**.

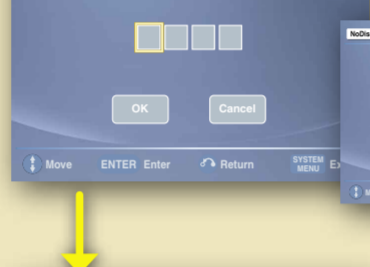
Find the brand code of your cable box or satellite receiver in the "Cable Box/Satellite Receiver Brand Code" list of the Operating Instructions.



YES **NO**

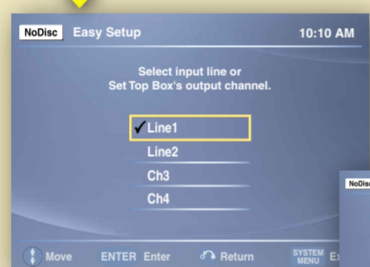
8b Press **↑/↓** to select whether or not you have a cable connection, and press **ENTER**.

If you have cable, select "Cable." If not, select "Antenna."

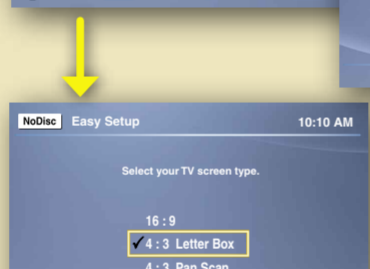


9a Press **↑/↓** to select the cable box/satellite receiver output channel, then press **ENTER**.

If you connected your cable box or satellite receiver to the VCR-DVD recorder's audio/video input, select the "Line" number you connected to. If you connected to the VCR-DVD recorder's antenna input, select the "Ch (channel)" used to receive the signal from the cable box.

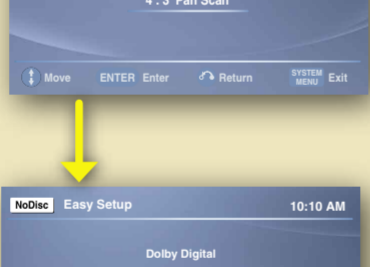


9b The Tuner Preset function starts searching for all receivable channels. This may take a couple of minutes.



10 Press **↑/↓** to select the type of TV you have, then press **ENTER**.

If you have a wide-screen TV, select "16:9." If you have a standard TV, select either "4:3 Letter Box" (shrink to fit) or "4:3 Pan Scan" (stretch to fit). This will determine how "wide-screen" images are displayed on your TV.



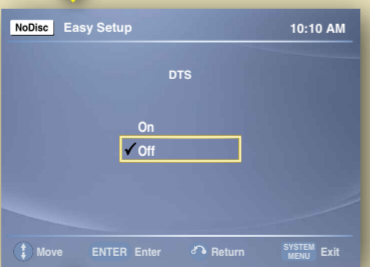
11 Press **↑/↓** to select the type of Dolby Digital signal you want to send to your AV amplifier (receiver), then press **ENTER**.

If your AV amplifier (receiver) has a Dolby Digital decoder, select "Dolby Digital." If not, select "D-PCM."

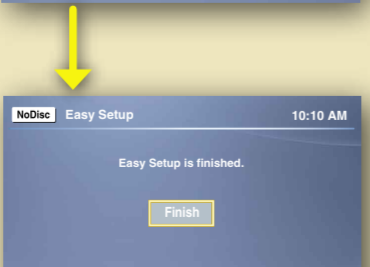


12 Press **↑/↓** to select the type of DTS signal you want to send to your AV amplifier (receiver), then press **ENTER**.

If your AV amplifier has a DTS decoder, select "On." If not, select "Off."



13 When "Finish" appears, press **ENTER** to complete Easy Setup.



Test your Set Top Box controller

If you connected a Set Top Box controller, do the following:

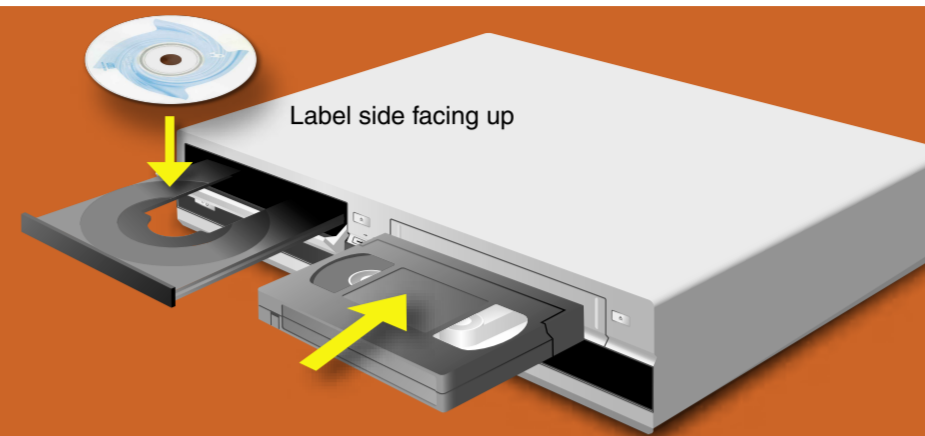
1 Turn on the recorder and the cable box/satellite receiver.

2 Point the remote at the recorder (not at the cable box/satellite receiver).

3 Press **CH+/-** and confirm that the channel changes on the cable box/satellite receiver window.

If the recorder does not control your cable box or satellite receiver, see "If you cannot get the recorder to control your cable box/satellite receiver" at the end of "Step 7: Easy Setup" in the Operating Instructions.

step3 Record!



Insert a DVD Disc

- 1 Press **DVD** to operate the DVD recorder.
- 2 Press **▲ OPEN/CLOSE** and place a recordable DVD on the disc tray.
- 3 Press **▲ OPEN/CLOSE** again to close the disc tray.

Wait until "LOAD" disappears from the front panel display. See "Quick Guide to Disc Types" in the Operating Instructions for more details about the differences between disc types.

Insert a VHS Tape

- 1 Press **VIDEO** to operate the VCR.
- 2 Insert a tape with its safety tab in place.

Record a TV Program

The following explains how to record a current TV program. For instructions on how to set the timer, see the timer recording sections in the Operating Instructions.

1 Press **DVD** to record to a DVD disc. Or, press **VIDEO** to record to a VHS tape.

2 Press **CH+/-** to select a channel.

The channel number appears in the front panel display.

3 Press **REC MODE** repeatedly to select the recording mode.

When recording to a DVD disc: HQ, HSP, SP, LSP, ESP, LP, EP, or SLP HQ offers the best quality picture, but with the shortest recording time. Recording time increases with each successive mode, but the picture quality gradually deteriorates.

When recording to a VHS tape: SP or EP EP (Extended Play) provides recording time three times as long as SP (Standard Play). However, SP produces better picture and audio quality.

4 Press **REC**.

The recorder starts recording. To stop recording, press **■ STOP**.

If you are not using the Set Top Box controller:

- If you connected your cable box or satellite receiver to the Line 1 input of the VCR-DVD recorder, press **INPUT SELECT** until "LINE1" appears in the front panel display. Then select a channel on your cable box or satellite receiver.
- If you connected your cable box to the VCR-DVD recorder's antenna input jack, select channel 3 or 4, whichever channel is used to receive the signal from the cable box. Then select a channel on your cable box.

Dub From VHS Tape to DVD

- 1 Insert a recordable disc.
- 2 Insert a source tape.
- 3 Cue the tape at the start point, and press **◀ VIDEO**.

From DVD to VHS Tape

- 1 Insert a recordable tape.
- 2 Insert a source disc.
- 3 Select a title on the disc, and press **DVD ▶**.

Before dubbing, select the recording mode and make the necessary audio settings. For details, see the dubbing section in the Operating Instructions.



Playback the Recorded DVD Disc

1 Press **DVD** to operate the DVD recorder.

2 Press **TITLE LIST**.

The Title List menu appears.



3 Press **↑/↓** to select the title you want to play and press **ENTER**. The sub-menu appears.



4 Press **↑/↓** to select "Play" and press **ENTER**.

Playback starts from the beginning of the title.

Playback the Recorded VHS Tape

1 Press **VIDEO** to operate the VCR.

2 Press **◀▶** to find the point you want to start playback.

For further explanations, see "VCR Playback" in the Operating Instructions.

3 Press **▶ PLAY**.

Playback starts.

