

Personal Audio System

Operating Instructions
Mode d'emploi
Manual de instrucciones



SRS-XB2 * 4 5 8 7 0 4 4 1 1 * (1)

Help Guide

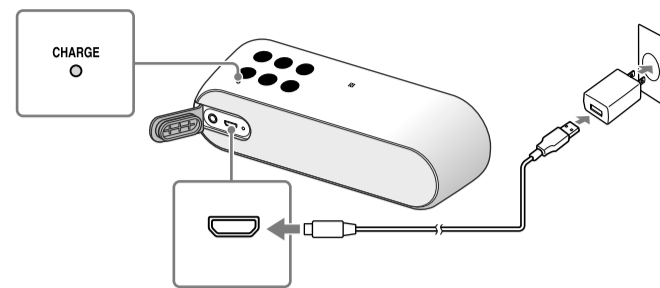
(web document for a PC/smartphone)
Explains detail about the unit, BLUETOOTH connection method, etc.



http://rd1.sony.net/help/speaker/srs-xb2/h_uc/

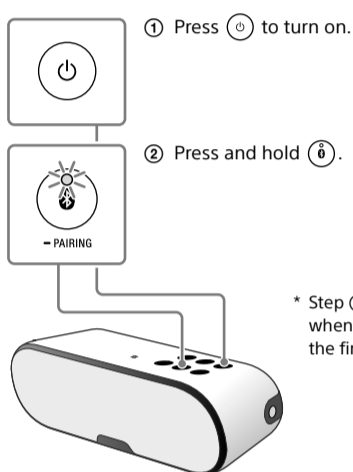
Charging the unit

Charge the battery for the first time.



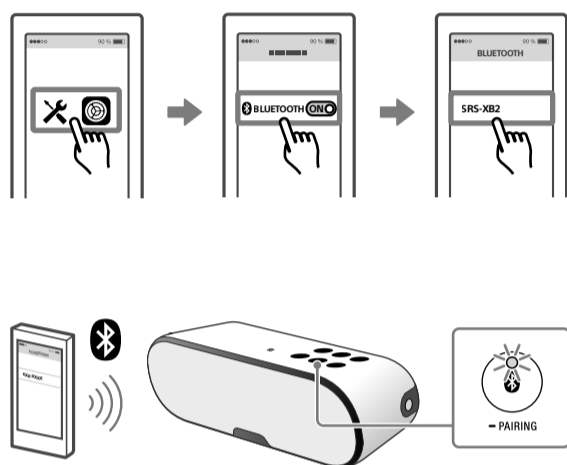
BLUETOOTH connection

1 Set the unit to the pairing mode.

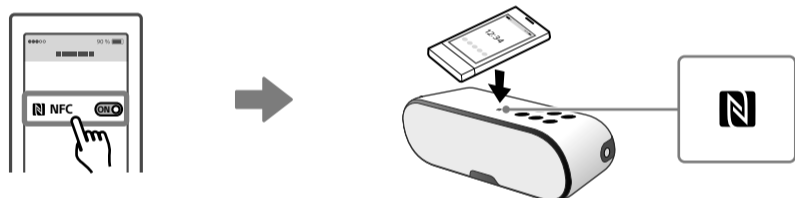


* Step 2 is unnecessary when using the unit for the first time.

2 Pairing the unit to your smartphone/iPhone.



To connect by One-touch (NFC)

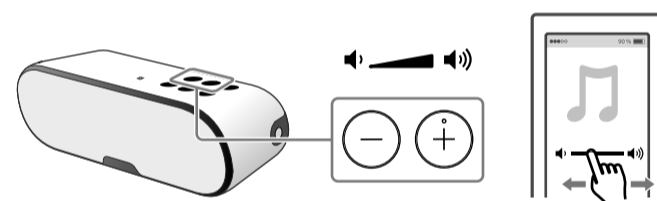


Listening

Start playback.

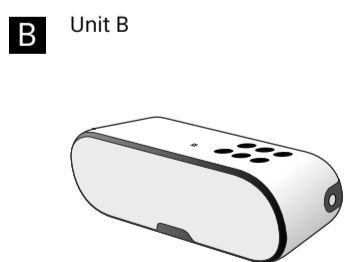
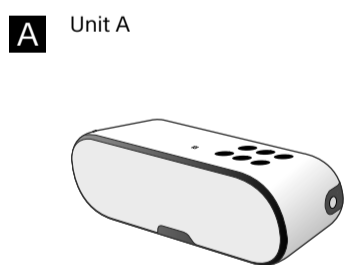


Adjust the volume.

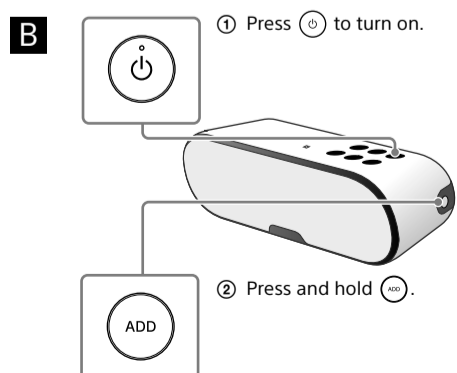
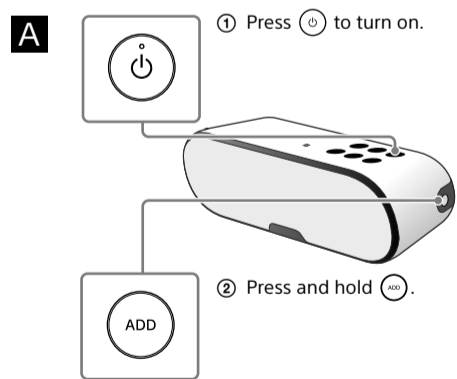


Listening with two units (Speaker Add function - double mode/stereo mode)

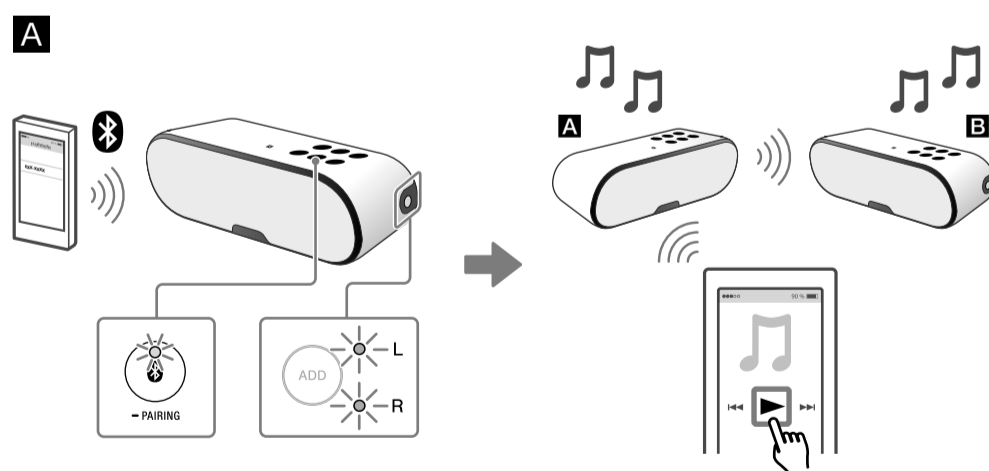
1 Preparation for two SRS-XB2 units.



2 Set unit A and then B.

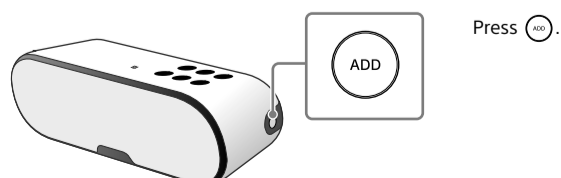


3 Connect your smartphone/iPhone to unit A with the Bluetooth indicator lit.



* The default is double mode.

To switch double mode/stereo mode (Lch/Rch)



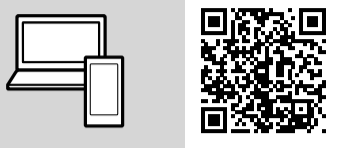


Manuel d'aide
(document Web pour PC/téléphone intelligent)

Fournit des détails sur l'appareil, la méthode de connexion BLUETOOTH, etc.

Guía de ayuda
(documento web para una PC o smartphone)

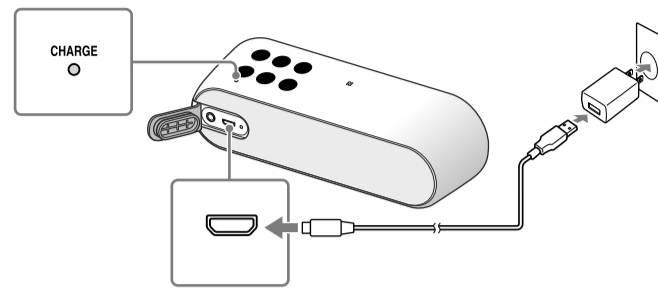
Explica en detalle la unidad, el modo de conexión BLUETOOTH, etc.



http://rd1.sony.net/help/speaker/srs-xb2/h_uc/

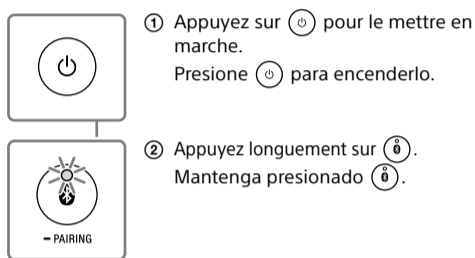
Charge de l'appareil
Cargar la unidad

Chargez la batterie pour la première fois.
Cargar la batería por primera vez.



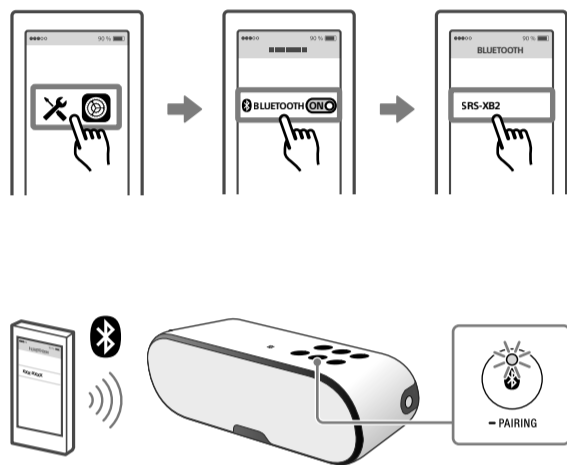
Connexion BLUETOOTH
Conexión BLUETOOTH

1 Réglez l'appareil en mode de jumelage.
Configure la unidad en modo emparejamiento.

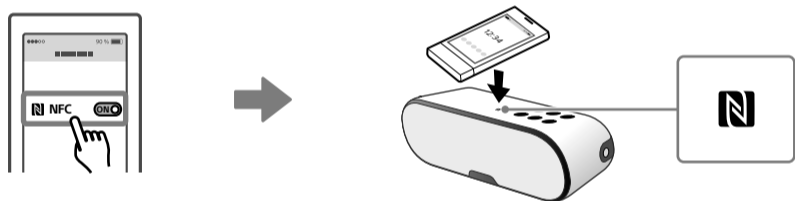


* L'étape ② n'est pas requise lorsque vous utilisez l'appareil pour la première fois.
* El paso ② no es necesario cuando se utiliza la unidad por primera vez.

2 Jumelez l'appareil avec votre téléphone intelligent/iPhone.
Emparejar la unidad con su smartphone/iPhone.



NFC Pour établir la connexion par simple contact (NFC)
Para conectar por medio de un toque (NFC)

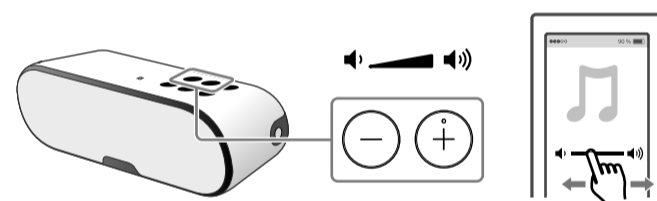


Écoute
Reproducir

Démarrez la lecture.
Comenzar la reproducción.



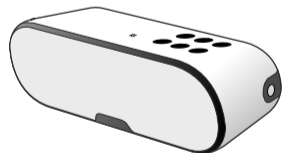
Réglez le volume.
Ajustar el volumen.



Écoute à l'aide de deux appareils (Fonction d'ajout de haut-parleur - mode double/mode stéréo)
Reproducir en dos unidades (Función para agregar altavoces - modo doble/modo estéreo)

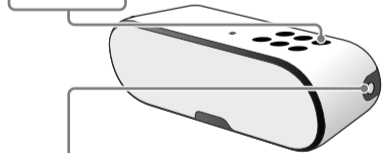
1 Préparez deux appareils SRS-XB2.
Preparación para dos unidades SRS-XB2.

A Appareil A/Unidad A

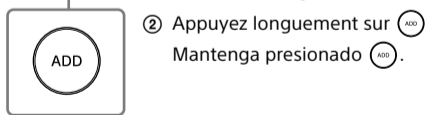


2 Réglez l'appareil **A**, puis l'appareil **B**.
Configure la unidad **A** y luego la **B**.

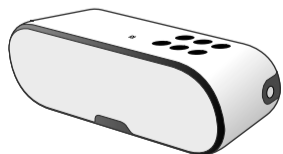
A ① Appuyez sur pour le mettre en marche.
Presione para encenderlo.



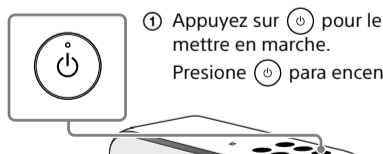
② Appuyez longuement sur .
Mantenga presionado .



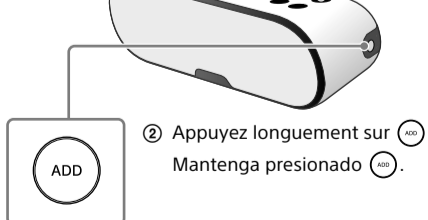
B Appareil B/Unidad B



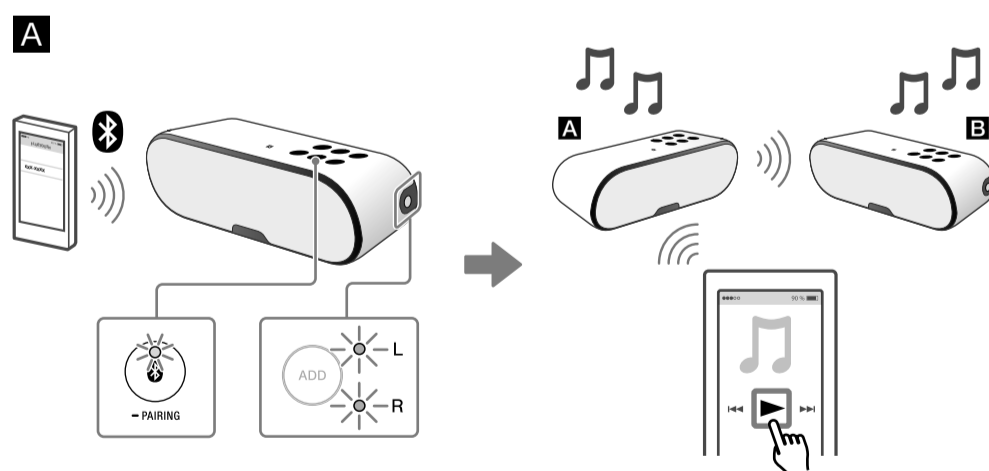
B ① Appuyez sur pour le mettre en marche.
Presione para encenderlo.



② Appuyez longuement sur .
Mantenga presionado .



3 Connectez votre téléphone intelligent/iPhone à l'appareil **A** dont le témoin est allumé.
Conecte su smartphone/iPhone a la unidad **A** con el indicador encendido.



* Le mode double est le mode par défaut.
* El modo predeterminado es el modo doble.

Pour alterner entre mode double/mode stéréo (canal G/canal D)
Para conmutar entre modo doble/modo estéreo (Canal Izq./Canal Der.)

