

FM/AM CD Kitchen Clock Radio

Operating Instructions

Owner's Record

The model number and the serial number are located on the top. Record the serial number in the space provided below. Refer to them whenever you call upon your Sony dealer regarding this product.

Model No. ICF-CDK50

Serial No. _____

For customers who purchased this product in the USA Please register this product on line at <http://www.sony.com/productregistration> . Proper registration will enable us to send you periodic mailings about new products, services, and other important announcements. Registering your product will also allow us to contact you in the unlikely event that the product needs adjustment or modification. Thank you.

ICF-CDK50

© 2007 Sony Corporation Printed in China

<http://www.sony.net/>

SONY®

Portable Audio

LIMITED WARRANTY (U.S. Only)

Sony Electronics Inc. ("Sony") warrants this product against defects in material or workmanship for the time periods and as set forth below. Pursuant to this Limited Warranty, Sony will, at its option, (i) repair the product using new or refurbished parts or (ii) replace the product with a new or refurbished product. For purposes of this Limited Warranty, "refurbished" means a product or part that has been returned to its original specifications. **In the event of a defect, these are your exclusive remedies.**

Labor: For a period of one (1) year from the original date of purchase of the product ("Labor Warranty"), Sony will, at its option, repair or replace with new or refurbished product, product determined to be defective. If Sony elects to replace the product after this Labor Warranty has expired but while the Parts Warranty below is still in effect, it will do so for the applicable labor charge.

Parts: For a period of one (1) year from the original date of purchase of product ("Parts Warranty"), Sony will supply new or refurbished replacement parts in exchange for parts determined to be defective.

This Limited Warranty covers only the hardware components packaged with the Product. It does not cover technical assistance for hardware or software usage and it does not cover any software products whether or not contained in the Product; any such software is provided "AS IS" unless expressly provided for in any enclosed software Limited Warranty. Please refer to the End User License Agreements included with the Product for your rights and obligations with respect to the software.

Instructions: To obtain warranty service, you must deliver the product, freight prepaid, in either its original packaging or packaging affording an equal degree of protection to the Sony authorized service facility specified. **It is your responsibility to backup any data, software or other materials you may have stored or preserved on your unit. It is likely that such data, software, or other materials will be lost or reformatted during service and Sony will not be responsible for any such damage or loss.** A dated purchase receipt is required. For specific instructions on how to obtain warranty service for your product,

Visit Sony's Web Site:
www.sony.com/service

Or call the **Sony Customer Information Service Center**
1-800-222-SONY (7669)

For an accessory or part not available from your authorized dealer, call:

1-800-488-SONY (7669)

Repair / Replacement Warranty: This Limited Warranty shall apply to any repair, replacement part or replacement product for the remainder of the original Limited Warranty period or for ninety (90) days, whichever is longer. Any parts or product replaced under this Limited Warranty will become the property of Sony.

This Limited Warranty only covers product issues caused by defects in material or workmanship during ordinary consumer use; it does not cover product issues caused by any other reason, including but not limited to product issues due to commercial use, acts of God, misuse, limitations of technology, or modification of or to any part of the Sony product. This Limited Warranty does not cover Sony products sold AS IS or WITH ALL FAULTS or consumables (such as fuses or batteries). This Limited Warranty is invalid if the factory-applied serial number has been altered or removed from the product. This Limited Warranty is valid only in the United States.

LIMITATION ON DAMAGES: SONY SHALL NOT BE LIABLE FOR ANY INCIDENTAL OR CONSEQUENTIAL DAMAGES FOR BREACH OF ANY EXPRESS OR IMPLIED WARRANTY ON THIS PRODUCT.

DURATION OF IMPLIED WARRANTIES: EXCEPT TO THE EXTENT PROHIBITED BY APPLICABLE LAW, ANY IMPLIED WARRANTY OF MERCHANTABILITY OR FITNESS FOR A PARTICULAR PURPOSE ON THIS PRODUCT IS LIMITED IN DURATION TO THE DURATION OF THIS WARRANTY.

Some states do not allow the exclusion or limitation of incidental or consequential damages, or allow limitations on how long an implied warranty lasts, so the above limitations or exclusions may not apply to you. This Limited Warranty gives you specific legal rights and you may have other rights which vary from state to state.

WARNING

To reduce the risk of fire or electric shock, do not expose this apparatus to rain or moisture.

To reduce the risk of electrical shock, do not open the cabinet. Refer servicing to qualified personnel only.

To reduce the risk of fire, do not cover the ventilation of the apparatus with newspapers, tablecloths, curtains, etc. And do not place lighted candles on the apparatus.

The apparatus shall not be exposed to dripping or splashing and no objects filled with liquids, such as vases, shall be placed on the apparatus.

As the main plug is used to disconnect the unit from the mains, connect the unit to an easily accessible AC outlet.

Should you notice an abnormality in the unit, disconnect the main plug from the AC outlet immediately.

Do not install the appliance in a confined space, such as a bookcase or built-in cabinet.

Notes on DualDiscs

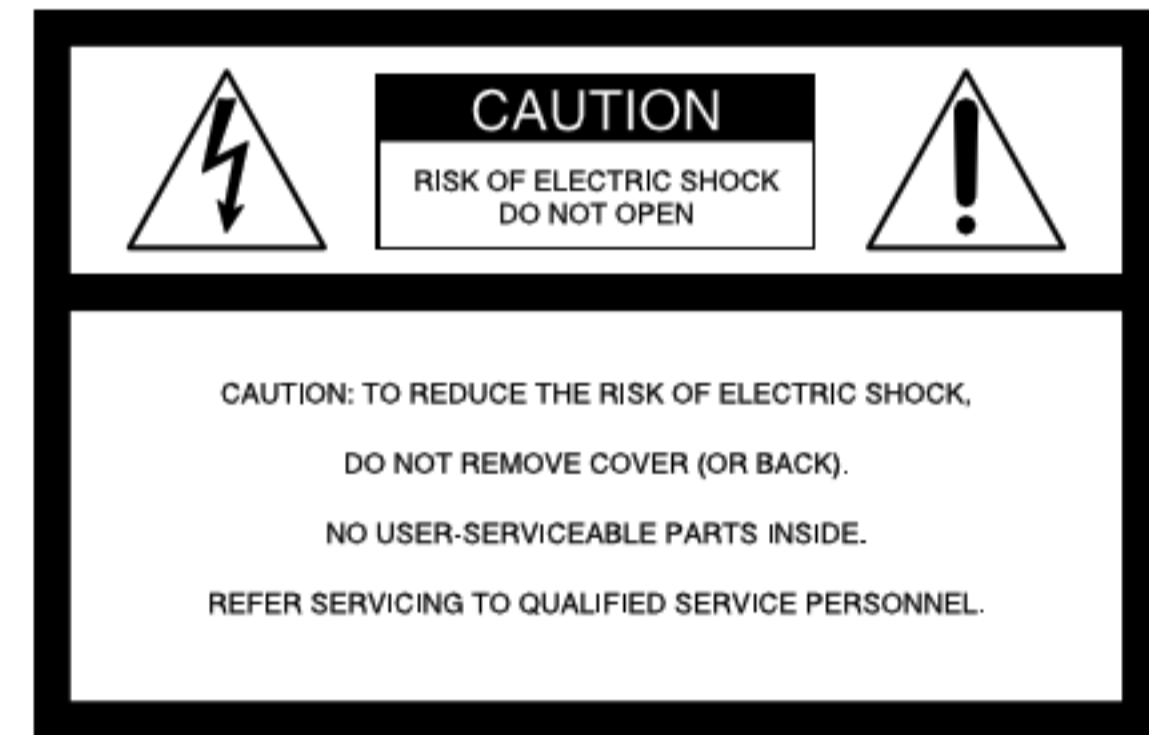
A DualDisc is a two sided disc product which mates DVD recorded material on one side with digital audio material on the other side. However, since the audio material side does not conform to the Compact Disc (CD) standard, playback on this product is not guaranteed.

Music discs encoded with copyright protection technologies

This product is designed to playback discs that conform to the Compact Disc (CD) standard. Recently, various music discs encoded with copyright protection technologies are marketed by some record companies. Please be aware that among those discs, there are some that do not conform to the CD standard and may not be playable by this product.

CAUTION

The use of optical instruments with this product will increase eye hazard. Use of controls or adjustments or performance of procedures other than those specified herein may result in hazardous radiation exposure. To reduce the risk of fire, do not place any heating or cooking apparatus beneath this unit.



This symbol is intended to alert the user to the presence of uninsulated "dangerous voltage" within the product's enclosure that may be of sufficient magnitude to constitute a risk of electric shock to persons.



This symbol is intended to alert the user to the presence of important operating and maintenance (servicing) instructions in the literature accompanying the appliance.

The graphical symbols are at the top of the enclosure.



Class II equipment symbol
This symbol indicates that the unit has a double insulation system.

INFORMATION

This equipment has been tested and found to comply with the limits for a Class B digital device, pursuant to Part 15 of the FCC Rules. These limits are designed to provide reasonable protection against harmful interference in a residential installation.

This equipment generates, uses and can radiate radio frequency energy and, if not installed and used in accordance with the instructions, may cause harmful interference to radio communications. However, there is no guarantee that interference will not occur in a particular installation. If this equipment does cause harmful interference to radio or television reception, which can be determined by turning the equipment off and on, the user is encouraged to try to correct the interference by one or more of the following measures:
— Reorient or relocate the receiving antenna.
— Increase the separation between the equipment and receiver.
— Connect the equipment into an outlet on a circuit different from that to which the receiver is connected.
— Consult the dealer or an experienced radio/TV technician for help.

WARNING

- Danger of explosion if battery is incorrectly replaced. Replace only with the same or equivalent type.
- Replace the battery for the clock backup with a Sony CR2032 lithium battery. Use of another battery may present a risk of fire or explosion.
- Battery may explode if mistreated. Do not recharge, disassemble or dispose of in fire.
- Do not expose the batteries (battery pack or batteries installed) to excessive heat such as sunshine, fire or the like for a long time.
- Dispose of used battery promptly. Keep away from children.

CAUTION

You are cautioned to not expressly approve authority to operate

For customer

Please register this <http://www.sony.com>. Proper registration of periodic mailings other important a product will also o unlikely event tha or modification. T

Important S

- 1) Read these ins
- 2) Keep these ins
- 3) Heed all warn
- 4) Follow all inst
- 5) Do not use thi
- 6) Clean only wit
- 7) Do not block a
Install in acco
instructions.
- 8) Do not install
as radiators, h
apparatus (inc
heat.
- 9) Do not defeat
or grounding-
two blades wit
grounding typ
third groundin
third prong an
provided plug
consult an elec
obsolete outlet
- 10) Protect the po
or pinched pa
receptacles, an
the apparatus.
- 11) Only use attac
manufacturer.
- 12) Use only with
table specified
the apparatus.
when moving
avoid injury fr

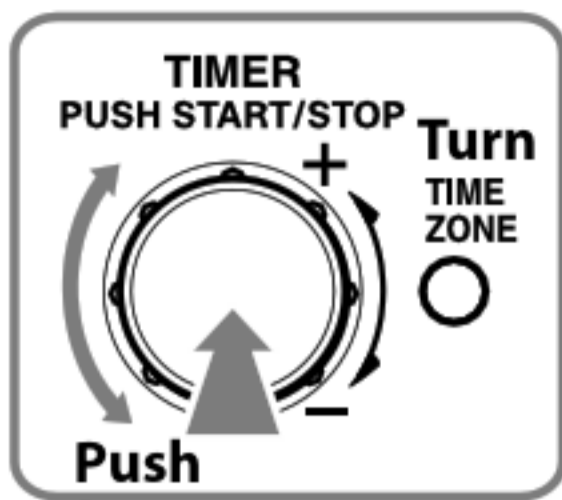
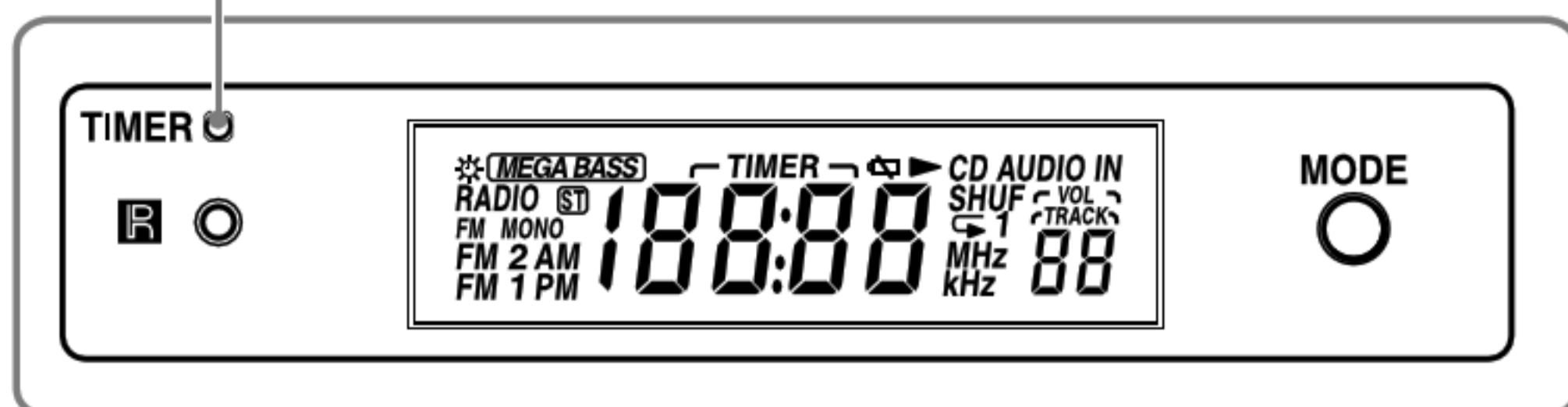
- 13) Unplug this ap
when unused
- 14) Refer all servic
Servicing is re
been damaged
cord or plug is
or objects have
apparatus has
does not opera

Precautio

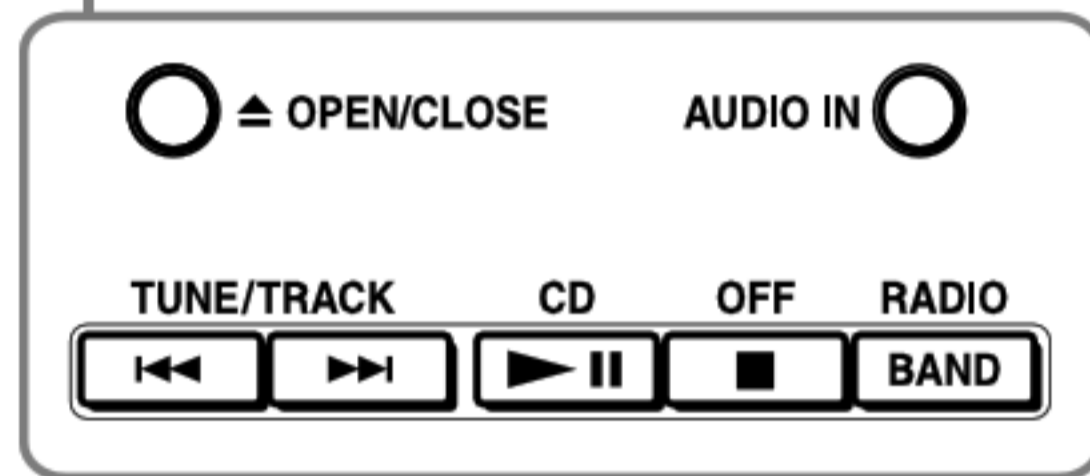
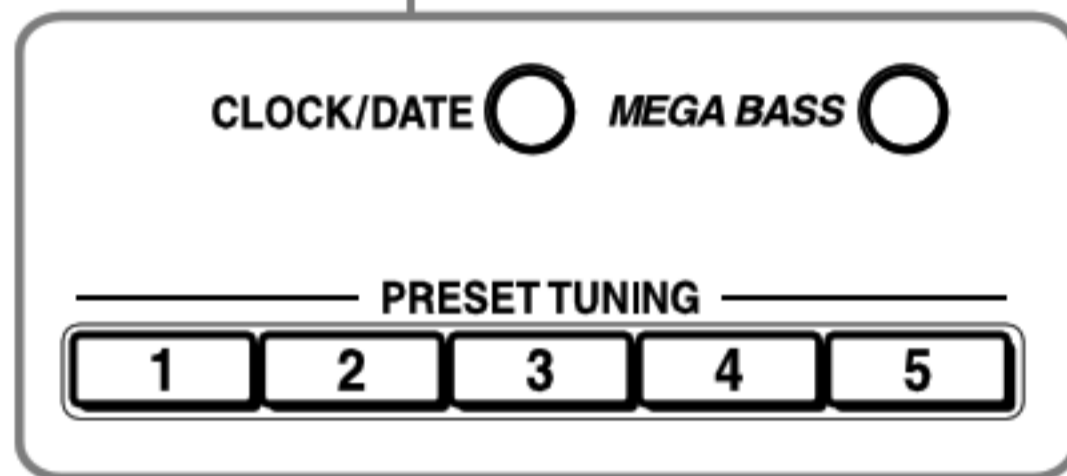
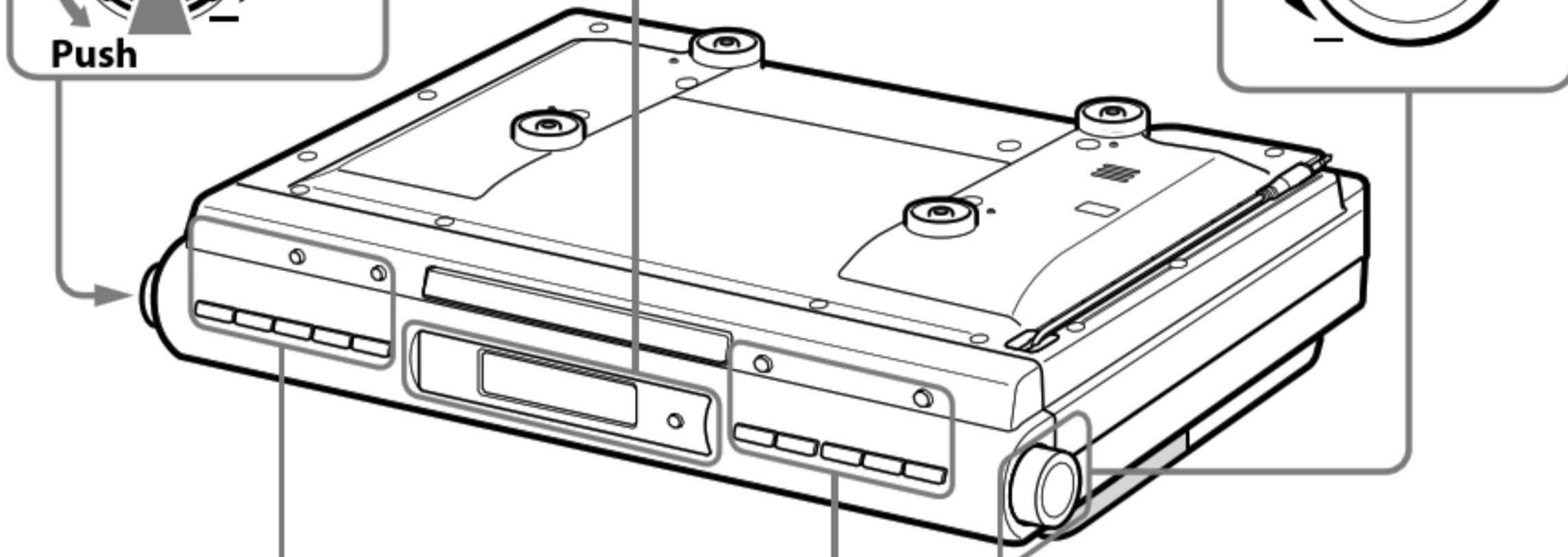
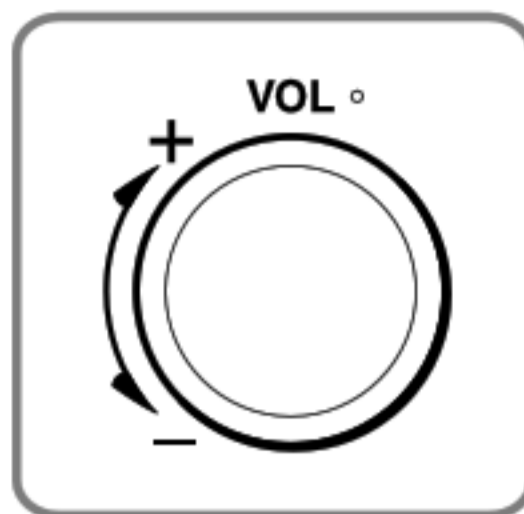
- Use the power so
"Specifications" t
- The nameplate in
consumption, etc
- To disconnect the
out by the plug, n
- Do not leave the
such as a radiator
direct sunlight, ex
or shock.
- Allow adequate a
heat build-up. Do
(a rug, a blanket,
block the ventilat
- Should any solid
unplug the unit a
personnel before
- To clean the casin
a mild detergent
- The unit is not di
source (mains) as
outlet, even if the

If you have any q
concerning your
Sony dealer.

TIMER indicator

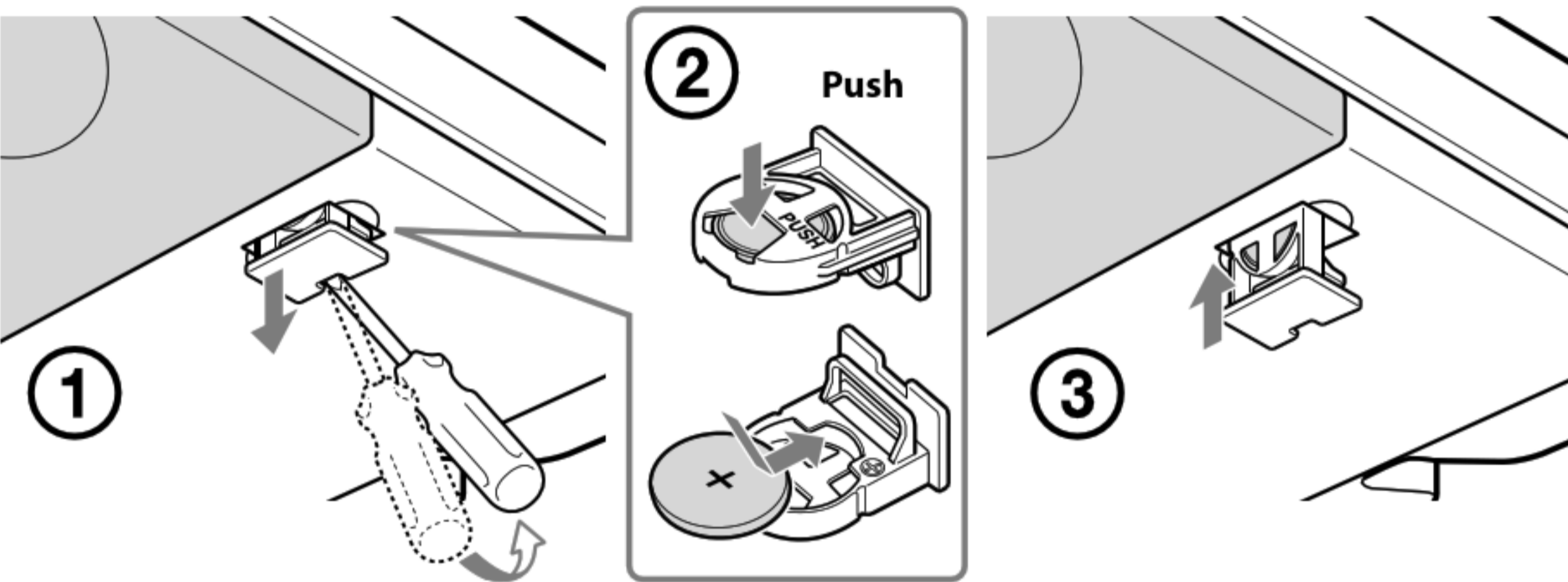


There is a tactile dot next to VOL +.

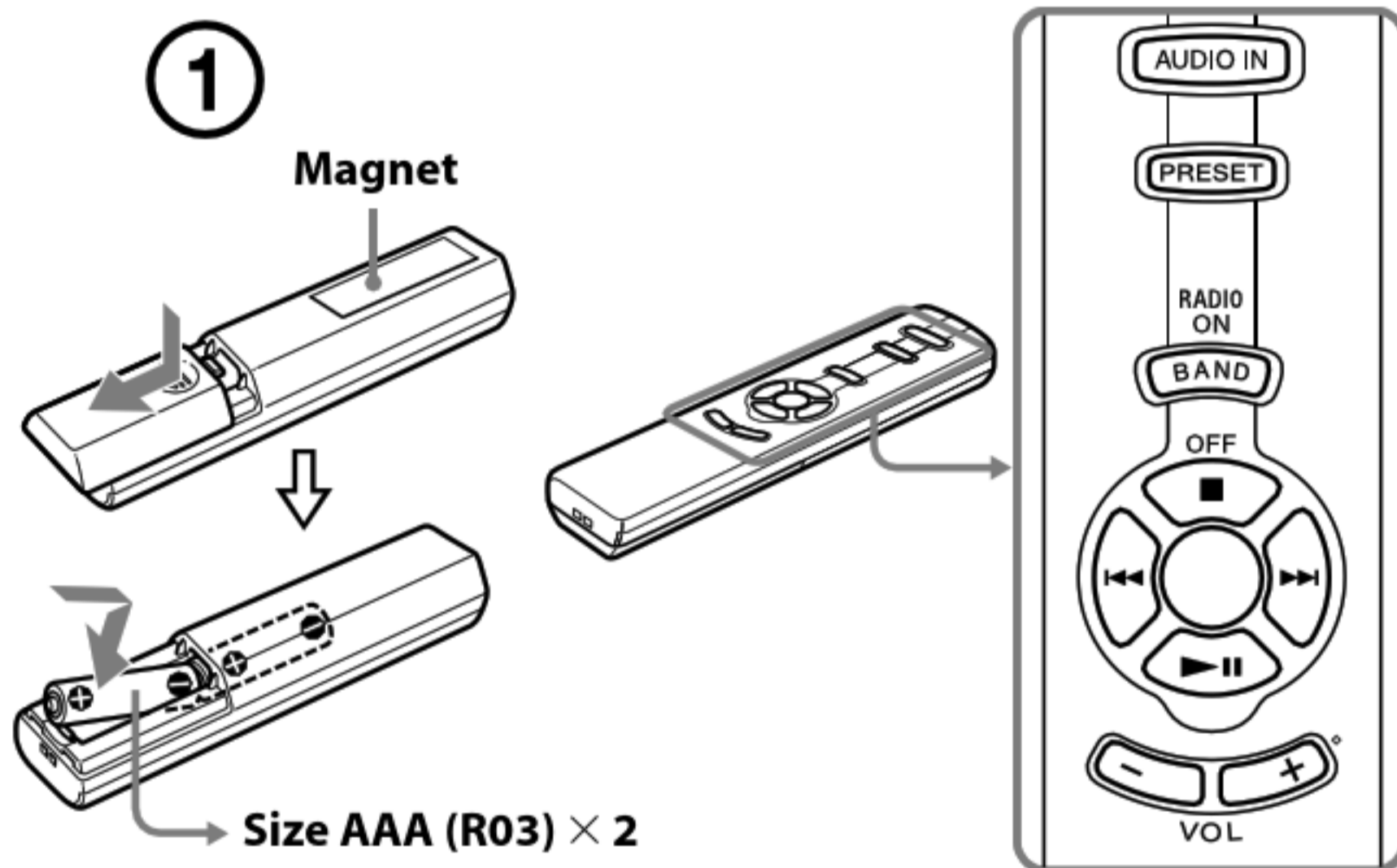


CD ►II button has a tactile dot.

B



C



The VOL + button has a tactile dot.

About the backup battery

To keep good time, this unit contains one CR2032 battery inside of the unit as a backup power source. The battery keeps the clock operating in the event of a power interruption.

Knowing when to replace the battery

When the battery becomes weak, "⏸" appears in the display.

If a power interruption occurs while the battery is weak, the current time will be initialized.

Replace the battery with a Sony CR2032 lithium battery. Use of another battery may cause a fire or explosion.

Note

If "AM 12:00" flashes in the display when the unit is connected to AC outlet for the first time, the battery may be weak. In this case, consult your Sony dealer.

Replacing the battery

1 Keep the AC plug connected to the AC outlet and pry out the battery holder at the bottom of the unit using a slender rod, such as a screwdriver. (See Fig. B-①)

2 Push the exhausted battery out from the bottom of the battery holder and insert a new battery with the + side facing up. (See Fig. B-②)

3 Insert the battery holder back into the unit. (See Fig. B-③)

4 Press RADIO/BAND, CD ►II, or AUDIO IN to turn "⏸" off in the display.

Note

When replacing the battery, do not disconnect AC plug from AC outlet.

If you do, the current time will be initialized.

Battery Warning

If the unit is to be left unplugged for a long time, remove the battery to avoid undue battery discharge and damage to the unit from battery leakage.

NOTES ON THE LITHIUM BATTERY

- Dispose of the used battery promptly. Keep the lithium battery out of the reach of children. Should the battery be swallowed, consult a doctor immediately.
- Wipe the battery with a dry cloth to assure a good contact.
- Be sure to observe correct polarity when installing the battery.
- Do not hold the battery with metallic tweezers, otherwise a short-circuit may occur.
- Do not expose the battery to excessive heat such as direct sunlight, fire or the like.

WARNING

There is a danger of explosion if the battery is incorrectly replaced. Replace only with the same or equivalent type recommended by the equipment manufacturer.

Installing the batteries into the remote commander

(See Fig. C-①)

Insert two size AAA (R03) batteries (not supplied).

When to replace the batteries

With normal use, the batteries should last for about six months. When the remote no longer operates the CD kitchen clock radio, replace all the batteries with new ones.

Notes

- Do not charge the dry batteries.
- If you do not intend to use the remote for a long time, remove the batteries to prevent damage by leakage and corrosion.

Use of magnet (See Fig. C-②)

A magnet is provided on the back of the remote so that it can be attached to a refrigerator or other iron surface.

However, do not operate the remote while it is attached in this manner.

Note

Do not place the remote commander near magnetic cards such as credit cards.

Setting the first time

This unit is preset to Standard Time) at the back up battery. After just plug it in, select

- 1 Plug in the unit. The current time will be displayed.
- 2 Press TIME ZONE. Area number "1" will be displayed.
- 3 Press TIME ZONE. Area number as follows will be displayed.

Area number

1

2 (default setting)

3

4

5

6

7

The area number will be displayed.

After the current time is displayed.

After the current time is displayed.

TIME ZONE to turn "⏸" off in the display.

Note

Though the clock is preset to Standard Time, discrepancies may occur. If necessary, set the clock to "Setting the clock".

When daylight saving time (summer time) starts

This model automatically switches to daylight saving time (summer time) when "⚙" is displayed from the display. (summer time) time (summer time) daylight saving time.

- Daylight saving time (summer time) starts on the second Sunday of November.
- Standard time begins on the first Sunday of November.

Setting the first time

- 1 Plug in the unit.
- 2 Hold down CLOCK/DATE. The year starts will be displayed.
- 3 Turn the TIME ZONE repeatedly until the display shows the area number.
- 4 Push TIMER. The current time will be displayed.
- 5 Repeat steps 1-4 for the day, hour, and minute. Then push TIMER.

Notes

- The clock setting will be canceled while setting the clock.
- If you do not press any button while setting the clock, the setting will be canceled.

To display the current time

Press CLOCK/DATE. The current time will be displayed. The display shows the current time and then changes to the current time.

To change the time (summer time)

Hold down OFF. The current time will be displayed. The display shows the current time and then changes to the current time. The display shows the current time and then changes to the current time. The display shows the current time and then changes to the current time.